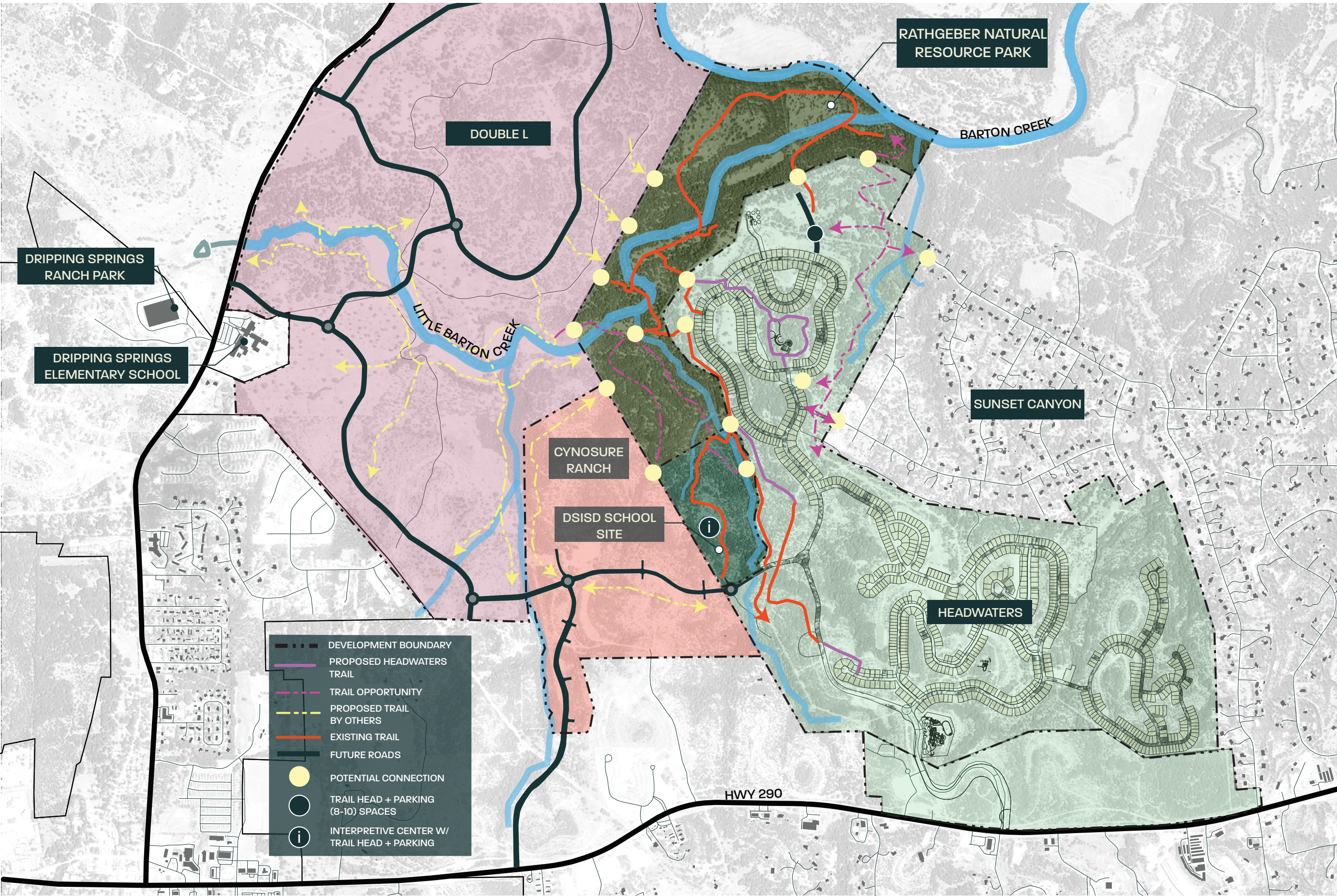


RATHGEBER NATURAL RESOURCE PARK

Trail Study Presentation





Recommendations: Northern Trail System

Listed below are a series of trail recommendations corresponding to specific **“Areas of Study”** within the developments surrounding the **Rathegeber Natural Resource Park**. These recommendations are focused on the design, location and future use of the trail system.

Double L Ranch Development: Area of Study/Recommendations

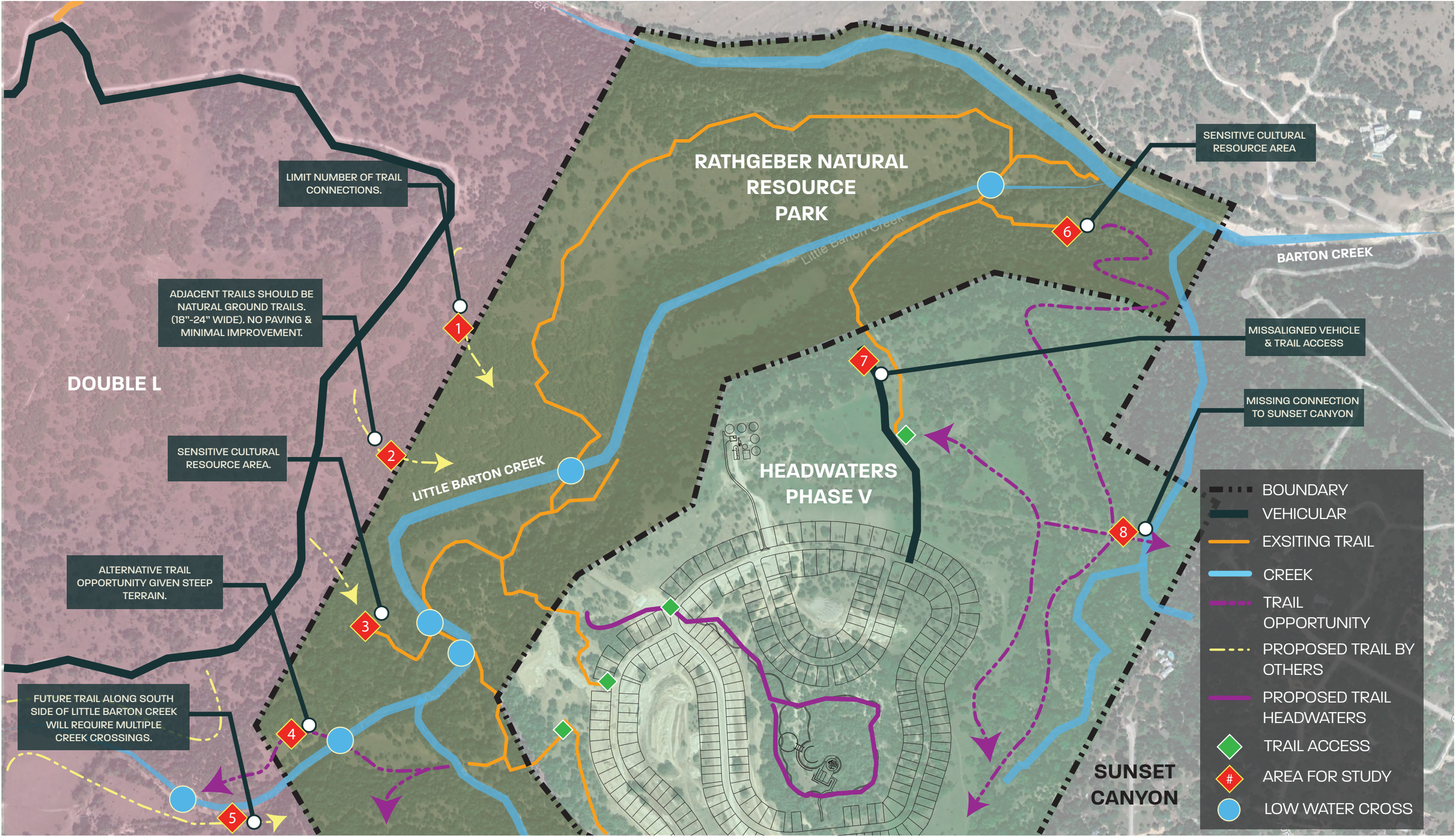
- 1. Trail connections from future “Double L” development leading into Rathgeber park should be limited to preserve wilderness experience within the park. These proposed trails also connect to parts of Rathgeber that lack an existing trail.
- 2. Any adjacent trails connecting to Rathgeber Park should be rustic/natural ground trails that require no paving and minimal changes. (18”-24” wide).
- 3. Sensitive cultural resource sites should be protected or left undisturbed by trail system.
- 4/5. An alternative (long distance) trail should be explored north of “Little Barton Creek” due to the steep terrain on the south side. In any case, this trail along “Little Barton Creek” will require multiple creek crossings as the cliffs prevent passage solely on one side of the creek.

Rathegeber Natural Resource Park: Area of Study/Recommendations

- 6. The existing sensitive cultural resource site should be protected here. (Discussion over this site needed for full context.)

Headwaters: Area of Study/Recommendations

- 7. A vehicular road was cleared to the tree line (as depicted in Headwaters Masterplan - “Easement”) and does not align with the existing trails entering into Rathgeber Park.
- 8. There could be a potential trail opportunity along eastern boundary of the Headwaters development with a pedestrian connection into Sunset Canyon.



Recommendations: Southern Trail System

Listed below are a series of trail recommendations corresponding to specific **“Areas of Study”** within the developments surrounding the **Rathegeber Natural Resource Park**. These recommendations are focused on the design, location and future use of the trail system.

Double L Ranch Development: Area of Study/Recommendations

1. This proposed long range trail may be placed in steep terrain unsuitable for pedetrian trails. An alternative trail opportunity has been shown in the northern side of “Little Barton Creek”.

Cynosure: Area of Study/Recommendations

2. We recommend limiting connections from Cynosure into Rathgeber Park due to the proximity of what could be a designated “main entrance” at the DSISD school site. This will help the city control entry/access into the park, as well as preserve more of the sensitive wilderness areas from parking and high pedestrian traffic.

DSISD Site: Area of Study/Recommendations

3. Exisitng utility lines provide cleared areas that will probably be used as “unofficial” trails by pedestrians and visitors. This location could be a used as a potentially connection to other official trails.

4. Live Oak groves are scattered among the site and should be investigated during school site planning.

5. Another existing utility line that will be used by park visitors as an “unofficial” trail.

6. Steep slope observed at this location that will prevent connection to Headwaters and Rathgeber Park. Another low-water crossing is marked as a suitable alternative.

Recommendations: Southern Trail System

Listed below are a series of trail recommendations corresponding to specific **“Areas of Study”** within the developments surrounding the **Rathegeber Natural Resource Park**. These recommendations are focused on the design, location and future use of the trail system.

Headwaters: Area of Study/Recommendations

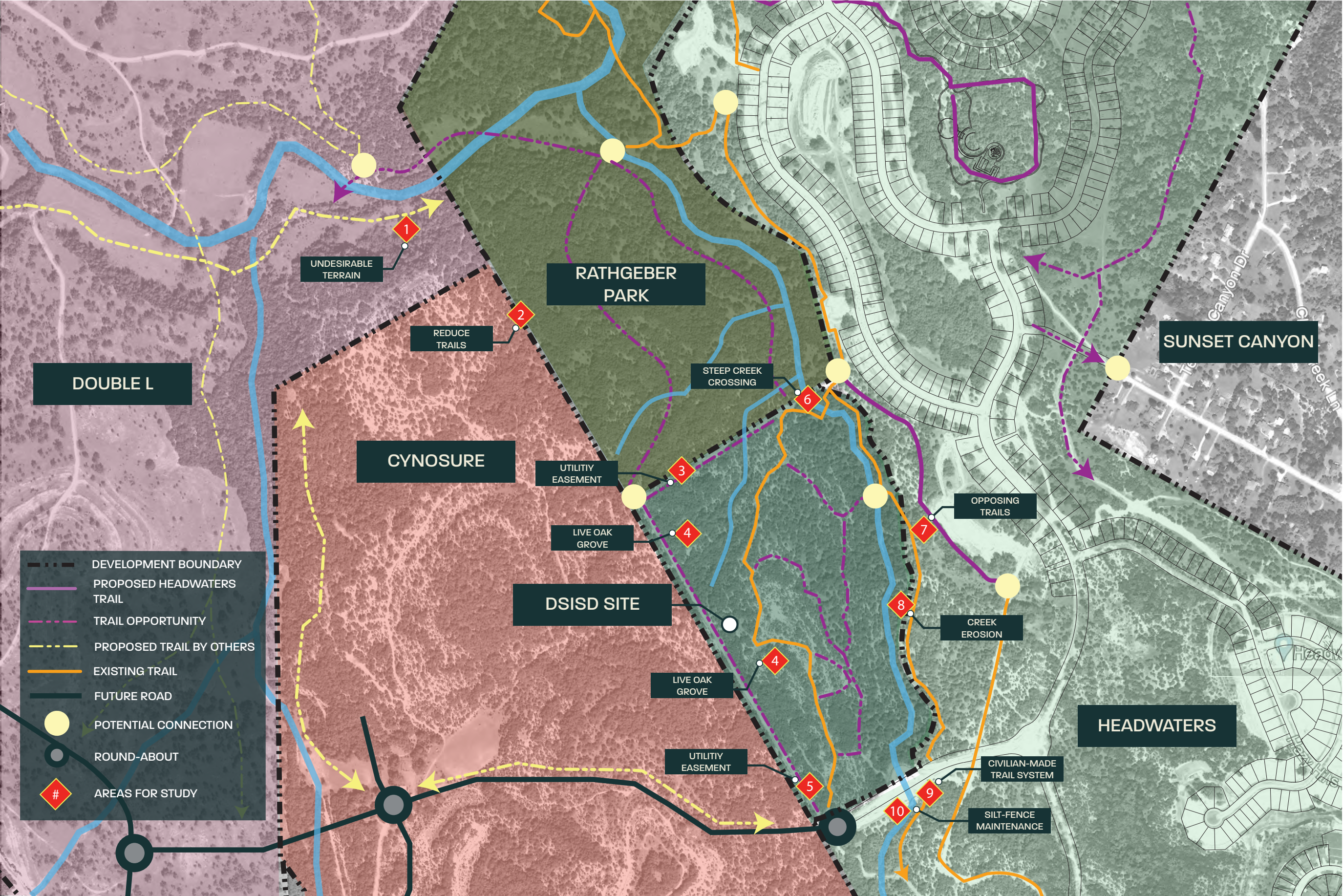
7.

An existng mountain bike trail designed by civilians directly opposes the proposed North-South trail planned on Headwaters. We recommend that the existing pedestrian trial be explored as a suitable alternative, as it is well-marked and provides close proximity to the creek.
8.

There is evidence of severe erosion along the creek that should be addressed if a pedestrian trail will be located near-by.
9.

The exising mountain bike trail continues further south into the Headwaters development and should be explored as an option to be included into the official trail system.
- 10

Disturbance from rapid development has caused intense erosion and siltation along the creek. Silt fences should be properly investigated and maintained.



DSISD Site: Trail System Concept Diagrams

We developed three concepts for potential trail systems within the DSISD school site. Each concept aims to organize how the school, trailheads and paved parking locations interact with the trail system.

Concept 1: Separate Parking

This concept creates two trailheads within the DSISD site, with one located within the school parking lot, and the other located at the “Interpretive Center”. The benefit of separating the two trail heads is that the parking lot at the “Interpretive Center” won’t be used as over-flow parking during school events and to be secured separately for park or school closures.

Concept 2: Shared Parking

This concept allows for the “Interpretive Center” to share its parking with the School site. By sharing parking resources, the trailheads (and access to Rathgeber Park) can have a smaller overall footprint on the site, which may be advantageous with developing this difficult terrain.

Concept 3: Adjacent Parking

The Headwaters trail system already contains multiple opportunities for connections with “official” and “unofficial” existing trails. By locating the “Interpretive Center” within Headwaters, the existing curb cut can be utilized for vehicular access, and be connected to multiple trails. The clear disadvantage here is that the interpretive center and main trailhead are not on city owned land.

