



VICINITY MAP

SITE

OWNER/TEAM INFORMATION

CIVIL ENGINEER
 CVA & ENVIRONMENTAL CONSULTANTS, INC.
 317 CHASE LANE #240
 AUSTIN, TEXAS 78746
 CONTACT: BRIAN ESTES, PE

LAND SURVEYOR
 CVA & ENVIRONMENTAL CONSULTANTS, INC.
 317 CHASE LANE #240
 AUSTIN, TEXAS 78746
 CONTACT: STACY SMITH, ANS, R.F.S.

SUMMARY
 FULL PURPOSE CITY LIMITS
 ZONING: SF-2

AREAS

LOTS (79)	61.14 AC	80.80%
ROW	9.22 AC	11.82%
TOTAL	70.36 AC	

IMPERVIOUS COVER

CONCRETE = 182,888 S.F.
 SIDEWALK = 69,419 S.F.
 ASSUMED IC PERCENTAGE ON LOT = 5300 S.F.
 IMPERVIOUS COVER TOTAL = 86,916 S.F.
 TOTAL AREA = 70.36 AC = 4,824,444 S.F.
 PROPOSED IMPERVIOUS COVER = 26.07%
 MAX. ALLOWED IMPERVIOUS COVER = 40%

LOT COUNT

NUMBER OF LOTS = 79
 TOTAL = 61.14 AC

BUILDING SETBACKS

FRONT = 20'
 BACK = 19'

PLAT NOTES

- ALL RESPONSIBILITY FOR THE ACCURACY OF THESE PLANS REMAINS WITH THE ENGINEER WHO PREPARED THESE PLANS. THE CITY MUST REVIEW ON THE AROUND OF THE WORK OF THE DESIGN ENGINEER.
- ASSIGNED CITY ADDRESS NUMBERS SHALL BE PERMANENTLY AFFIXED TO ALL STRUCTURES IN SUCH POSITION AS TO BE PLAINLY VISIBLE AND LEGIBLE FROM THE STREET.
- NO PORTION OF THIS TRACT FALLS WITHIN FEMA 1% ANNUAL CHANCE FLOOD HAZARD AREA PER FEMA PANEL 48060008P DATED 9/2/2009.
- WATER PROVIDER: DRIPPING SPRINGS WATER SUPPLY CORP.
- A PORTION OF THIS PROJECT IS LOCATED WITHIN THE EDWARDS AQUIFER CONTRIBUTING ZONE.
- THE JURISDICTIONAL AUTHORITY FOR WASTE WATER FACILITIES (SSEW) FALLS UNDER THE TEXAS COMMISSION OF ENVIRONMENTAL QUALITY. THE AUTHORIZED AGENT IS THE CITY OF DRIPPING SPRINGS.
- THE IHA SHALL BE RESPONSIBLE FOR OPERATION AND MAINTENANCE OF STORMWATER FACILITIES.
- DRIPPING SPRINGS WATER SUPPLY CORPORATION WILL OWN AND OPERATE THE WATER FACILITIES AS PER NOTE 4.
- THE IHA SHALL BE THE OWNER AND OPERATOR OF ROADWAY FACILITIES.

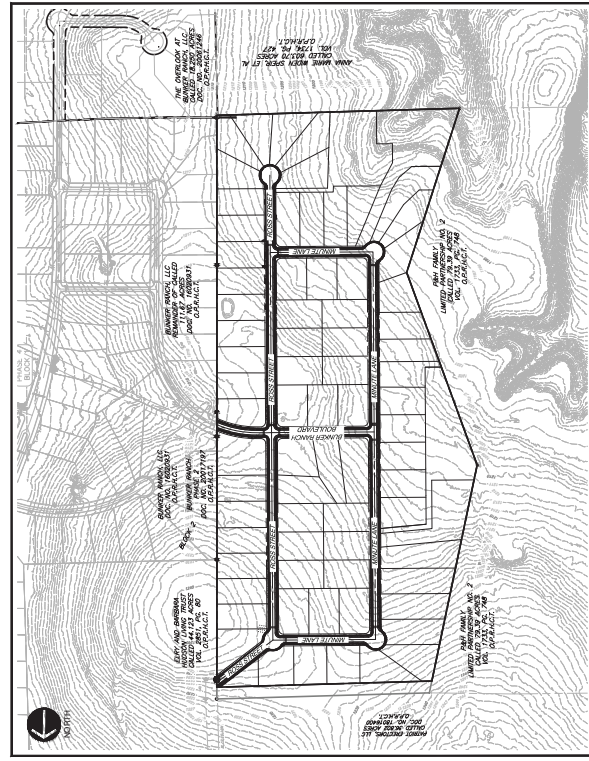
APPROVED BY:

CITY ADMINISTRATOR _____
 CITY ENGINEER _____
 PLANNING DIRECTOR _____
 PLANNING & ZONING COMMISSION CHAIR _____

APPROVED BY:

CITY SECRETARY _____
 DRIPPING SPRINGS WATER SUPPLY CORPORATION _____
 HAYS COUNTY ESD #6 _____
 SITE PERMIT NUMBER _____

PRELIMINARY PLAT FOR HARDY T LAND CITY OF DRIPPING SPRINGS, HAYS COUNTY, TX



SITE MAP
 SCALE: 1"=300'

SHEET LIST

SHEET #	DESCRIPTION
01	COVER SHEET
02	PRELIMINARY PLAT SHEET 1 OF 2
03	PRELIMINARY PLAT SHEET 2 OF 2
04	EXISTING DRAINAGE AREA MAP
05	PROPOSED DRAINAGE AREA MAP
06	DETENTION POND PLAN A
07	DETENTION POND PLAN B
08	DETENTION POND PLAN C
09	WATER & EGS PLAN

LEGAL DESCRIPTION

BEING A 7.63 AC TRACT OUT OF THE BERKHAMPTON HANNA SURVEY, NO. 28, ABSTRACT NO. 222, S81E10N07E01, COUNTY OF HAYS, TEXAS, AS SHOWN ON THE OFFICIAL PUBLIC RECORDS OF HAYS COUNTY, TEXAS (OFFICIAL RECORDS).

NOTES

- OWNER WILL BE ABLE TO CONTINUE DEVELOPMENT PROCESS, SUCH AS ROADS, UTILITIES, AND CONSTRUCTION OF BUILDINGS, SUBJECT TO THE CITY'S REVIEW AND APPROVAL. ALL DEVELOPMENT SHALL BE IN ACCORDANCE WITH THE CITY'S ZONING ORDINANCES AND THE CITY'S SUBDIVISION ORDINANCES. THE CITY'S REVIEW AND APPROVAL SHALL BE LIMITED TO THE CITY'S REVIEW AND APPROVAL OF THE PLAT AND SHALL NOT BE CONSIDERED A GUARANTEE OF THE CITY'S REVIEW AND APPROVAL. THE CITY'S REVIEW AND APPROVAL SHALL NOT BE CONSIDERED A GUARANTEE OF THE CITY'S REVIEW AND APPROVAL.
- CONNECTION TO THE EXISTING BUNKER HANNA BOULEVARD STREET AT BUNKER HANNA PHASE 4 MUST OCCUR WITHOUT COMPLETING THE ACCESS DRAGS AND WATER SUPPLY PERFECTION PER 161.4.
- SEE THE SUBDIVISION PLAT FOR THE CITY'S REVIEW AND APPROVAL OF THE CITY'S REVIEW AND APPROVAL OF THE CITY'S REVIEW AND APPROVAL.
- DEVELOPER SHALL BUILD SIDEWALKS ADJACENT TO COMMON AREAS. HOME BUILDERS WILL BUILD SIDEWALKS ON RESIDENTIAL LOTS. DEVELOPER WILL BOND SIDEWALKS PRIOR TO CONSTRUCTION.
- FINAL PLAT SHALL NOT BE RECORDED UNTIL A SECONDARY MEANS OF EGRESS IS CONSTRUCTED AND ACCEPTED BY THE CITY.

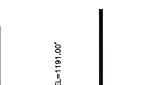


NO.	DATE	DESCRIPTION

Existing and Proposed Conditions at Points of Analysis		Proposed Drainage Area
Contributing Drainage Area	Existing	Proposed

Storm Event	Q-Ex (cfs)	Q-Pr (cfs)	PR-POND-Routed (cfs)	WS Elevation (ft)
2-y	48.10	61.50	47.5	1191.1
10-y	90.04	122.50	92.1	1192.2
25-y	126.88	178.50	128.5	1192.9
100-y	202.04	252.24	201.5	1194.0

Stage	Area (sf)	Avgh (ft)	Volumes (cf)	Cum. Volumes (cf)	Ac-R
1190.0	0.0	0.0	0.0	0.0	0.0000
1190.5	10.638	0.45825488	5.319	5.319	0.2254
1191.0	42.655	1.34631517	54.789	60.108	2.2931
1191.5	102.0	3.425298439	60.371	120.479	3.6790
1192.0	65.575	1.505394858	63.831	184.310	5.1444
1192.5	60.120	1.58777984	67.548	251.858	6.6005



NOTES:

- EXPANSION JOINTS ON FREE STANDING WALLS SHALL HAVE WATER TIGHT SEALS AS NEEDED [ECM 1.6.3(4)(5)].
- ALL POND BOTTOMS, SIDE SLOPES, AND EARTHEN EMBANKMENTS SHALL BE COMPACTED TO NINETY-FIVE (95) PERCENT RELATIVE DENSITY. ALL CONCRETE SHALL BE COMPACTED TO NINETY-FIVE (95) PERCENT RELATIVE DENSITY. EARTHEN EMBANKMENTS SHALL NOT EXCEED THREE TO ONE (3H:1V). ROCK SLOPES MAY EXCEED THESE LIMITS IF A GEOTECHNICAL REPORT WARRANTS A DEVIATION. ACTUAL FIELD CONDITIONS MAY OVERRIDE THESE LIMITS. ALL EARTHEN EMBANKMENTS SHALL BE PROTECTED WITH GRASS OR OTHER VEGETATION. EXPANSION JOINTS ON FREE STANDING WALLS SHALL HAVE WATER TIGHT SEALS AS NEEDED.

811 CAUTION !!! CAUTION !!!
 IF EXISTING UTILITIES VERTICALLY AND HORIZONTALLY
 FROM MAJORITY OF ANY DISCREPANCIES.

REVISION RECORD

EXISTING AND PROPOSED CONDITIONS AT POINTS OF ANALYSIS

DETENTION POND VALUES FROM HEC-HMS HYDROLOGIC MODELING SOFTWARE

DETENTION POND STAGE VALUES

SEE PLAN FOR DIMENSIONS

DETENTION POND C SECTION

SCALE: 1"=30'

SCALE: 1"=30'

SCALE: 1"=30'

CONTRIBUTING DRAINAGE AREA

EXISTING AND PROPOSED CONDITIONS AT POINTS OF ANALYSIS

DETENTION POND VALUES FROM HEC-HMS HYDROLOGIC MODELING SOFTWARE

DETENTION POND STAGE VALUES

SEE PLAN FOR DIMENSIONS

DETENTION POND C SECTION

SCALE: 1"=30'

SCALE: 1"=30'

SCALE: 1"=30'

CONTRIBUTING DRAINAGE AREA

EXISTING AND PROPOSED CONDITIONS AT POINTS OF ANALYSIS

DETENTION POND VALUES FROM HEC-HMS HYDROLOGIC MODELING SOFTWARE

DETENTION POND STAGE VALUES

SEE PLAN FOR DIMENSIONS

DETENTION POND C SECTION

SCALE: 1"=30'

SCALE: 1"=30'

SCALE: 1"=30'

CONTRIBUTING DRAINAGE AREA

EXISTING AND PROPOSED CONDITIONS AT POINTS OF ANALYSIS

DETENTION POND VALUES FROM HEC-HMS HYDROLOGIC MODELING SOFTWARE

DETENTION POND STAGE VALUES

SEE PLAN FOR DIMENSIONS

DETENTION POND C SECTION

SCALE: 1"=30'

SCALE: 1"=30'

SCALE: 1"=30'

CONTRIBUTING DRAINAGE AREA

EXISTING AND PROPOSED CONDITIONS AT POINTS OF ANALYSIS

DETENTION POND VALUES FROM HEC-HMS HYDROLOGIC MODELING SOFTWARE

DETENTION POND STAGE VALUES

SEE PLAN FOR DIMENSIONS

DETENTION POND C SECTION

SCALE: 1"=30'

SCALE: 1"=30'

SCALE: 1"=30'

CONTRIBUTING DRAINAGE AREA

EXISTING AND PROPOSED CONDITIONS AT POINTS OF ANALYSIS

DETENTION POND VALUES FROM HEC-HMS HYDROLOGIC MODELING SOFTWARE

DETENTION POND STAGE VALUES

SEE PLAN FOR DIMENSIONS

DETENTION POND C SECTION

SCALE: 1"=30'

SCALE: 1"=30'

SCALE: 1"=30'

CONTRIBUTING DRAINAGE AREA

EXISTING AND PROPOSED CONDITIONS AT POINTS OF ANALYSIS

DETENTION POND VALUES FROM HEC-HMS HYDROLOGIC MODELING SOFTWARE

DETENTION POND STAGE VALUES

SEE PLAN FOR DIMENSIONS

DETENTION POND C SECTION

SCALE: 1"=30'

SCALE: 1"=30'

SCALE: 1"=30'

CONTRIBUTING DRAINAGE AREA

EXISTING AND PROPOSED CONDITIONS AT POINTS OF ANALYSIS

DETENTION POND VALUES FROM HEC-HMS HYDROLOGIC MODELING SOFTWARE

DETENTION POND STAGE VALUES

SEE PLAN FOR DIMENSIONS

DETENTION POND C SECTION

SCALE: 1"=30'

SCALE: 1"=30'

SCALE: 1"=30'

CONTRIBUTING DRAINAGE AREA

EXISTING AND PROPOSED CONDITIONS AT POINTS OF ANALYSIS

DETENTION POND VALUES FROM HEC-HMS HYDROLOGIC MODELING SOFTWARE

DETENTION POND STAGE VALUES

SEE PLAN FOR DIMENSIONS

DETENTION POND C SECTION

SCALE: 1"=30'

SCALE: 1"=30'

SCALE: 1"=30'

CONTRIBUTING DRAINAGE AREA

EXISTING AND PROPOSED CONDITIONS AT POINTS OF ANALYSIS

DETENTION POND VALUES FROM HEC-HMS HYDROLOGIC MODELING SOFTWARE

DETENTION POND STAGE VALUES

SEE PLAN FOR DIMENSIONS

DETENTION POND C SECTION

SCALE: 1"=30'

SCALE: 1"=30'

SCALE: 1"=30'

CONTRIBUTING DRAINAGE AREA

EXISTING AND PROPOSED CONDITIONS AT POINTS OF ANALYSIS

DETENTION POND VALUES FROM HEC-HMS HYDROLOGIC MODELING SOFTWARE

DETENTION POND STAGE VALUES

SEE PLAN FOR DIMENSIONS

DETENTION POND C SECTION

SCALE: 1"=30'

SCALE: 1"=30'

SCALE: 1"=30'

CONTRIBUTING DRAINAGE AREA

EXISTING AND PROPOSED CONDITIONS AT POINTS OF ANALYSIS

DETENTION POND VALUES FROM HEC-HMS HYDROLOGIC MODELING SOFTWARE

DETENTION POND STAGE VALUES

SEE PLAN FOR DIMENSIONS

DETENTION POND C SECTION

SCALE: 1"=30'

SCALE: 1"=30'

SCALE: 1"=30'

CONTRIBUTING DRAINAGE AREA

EXISTING AND PROPOSED CONDITIONS AT POINTS OF ANALYSIS

DETENTION POND VALUES FROM HEC-HMS HYDROLOGIC MODELING SOFTWARE

DETENTION POND STAGE VALUES

SEE PLAN FOR DIMENSIONS

DETENTION POND C SECTION

SCALE: 1"=30'

SCALE: 1"=30'

SCALE: 1"=30'

CONTRIBUTING DRAINAGE AREA

EXISTING AND PROPOSED CONDITIONS AT POINTS OF ANALYSIS

DETENTION POND VALUES FROM HEC-HMS HYDROLOGIC MODELING SOFTWARE

DETENTION POND STAGE VALUES

SEE PLAN FOR DIMENSIONS

DETENTION POND C SECTION

SCALE: 1"=30'

SCALE: 1"=30'

SCALE: 1"=30'

CONTRIBUTING DRAINAGE AREA

EXISTING AND PROPOSED CONDITIONS AT POINTS OF ANALYSIS

DETENTION POND VALUES FROM HEC-HMS HYDROLOGIC MODELING SOFTWARE

DETENTION POND STAGE VALUES

SEE PLAN FOR DIMENSIONS

DETENTION POND C SECTION

SCALE: 1"=30'

SCALE: 1"=30'

SCALE: 1"=30'

CONTRIBUTING DRAINAGE AREA

EXISTING AND PROPOSED CONDITIONS AT POINTS OF ANALYSIS

DETENTION POND VALUES FROM HEC-HMS HYDROLOGIC MODELING SOFTWARE

DETENTION POND STAGE VALUES

SEE PLAN FOR DIMENSIONS

DETENTION POND C SECTION

SCALE: 1"=30'

SCALE: 1"=30'

SCALE: 1"=30'

CONTRIBUTING DRAINAGE AREA

EXISTING AND PROPOSED CONDITIONS AT POINTS OF ANALYSIS

DETENTION POND VALUES FROM HEC-HMS HYDROLOGIC MODELING SOFTWARE

DETENTION POND STAGE VALUES

SEE PLAN FOR DIMENSIONS

DETENTION POND C SECTION

SCALE: 1"=30'

SCALE: 1"=30'

SCALE: 1"=30'

CONTRIBUTING DRAINAGE AREA

EXISTING AND PROPOSED CONDITIONS AT POINTS OF ANALYSIS

DETENTION POND VALUES FROM HEC-HMS HYDROLOGIC MODELING SOFTWARE

DETENTION POND STAGE VALUES

SEE PLAN FOR DIMENSIONS

DETENTION POND C SECTION

SCALE: 1"=30'

SCALE: 1"=30'

SCALE: 1"=30'

CONTRIBUTING DRAINAGE AREA

EXISTING AND PROPOSED CONDITIONS AT POINTS OF ANALYSIS

DETENTION POND VALUES FROM HEC-HMS HYDROLOGIC MODELING SOFTWARE

DETENTION POND STAGE VALUES

SEE PLAN FOR DIMENSIONS

DETENTION POND C SECTION

SCALE: 1"=30'

SCALE: 1"=30'

SCALE: 1"=30'

CONTRIBUTING DRAINAGE AREA

EXISTING AND PROPOSED CONDITIONS AT POINTS OF ANALYSIS

DETENTION POND VALUES FROM HEC-HMS HYDROLOGIC MODELING SOFTWARE

DETENTION POND STAGE VALUES

SEE PLAN FOR DIMENSIONS

DETENTION POND C SECTION

SCALE: 1"=30'

SCALE: 1"=30'

SCALE: 1"=30'

CONTRIBUTING DRAINAGE AREA

EXISTING AND PROPOSED CONDITIONS AT POINTS OF ANALYSIS

DETENTION POND VALUES FROM HEC-HMS HYDROLOGIC MODELING SOFTWARE

DETENTION POND STAGE VALUES

SEE PLAN FOR DIMENSIONS

DETENTION POND C SECTION

SCALE: 1"=30'

SCALE: 1"=30'

SCALE: 1"=30'

CONTRIBUTING DRAINAGE AREA

EXISTING AND PROPOSED CONDITIONS AT POINTS OF ANALYSIS

DETENTION POND VALUES FROM HEC-HMS HYDROLOGIC MODELING SOFTWARE

DETENTION POND STAGE VALUES

SEE PLAN FOR DIMENSIONS

DETENTION POND C SECTION

SCALE: 1"=30'

SCALE: 1"=30'

SCALE: 1"=30'

CONTRIBUTING DRAINAGE AREA

EXISTING AND PROPOSED CONDITIONS AT POINTS OF ANALYSIS

DETENTION POND VALUES FROM HEC-HMS HYDROLOGIC MODELING SOFTWARE

DETENTION POND STAGE VALUES

SEE PLAN FOR DIMENSIONS

DETENTION POND C SECTION

SCALE: 1"=30'

SCALE: 1"=30'

SCALE: 1"=30'

CONTRIBUTING DRAINAGE AREA

EXISTING AND PROPOSED CONDITIONS AT POINTS OF ANALYSIS

DETENTION POND VALUES FROM HEC-HMS HYDROLOGIC MODELING SOFTWARE

DETENTION POND STAGE VALUES

SEE PLAN FOR DIMENSIONS

DETENTION POND C SECTION

SCALE: 1"=30'

SCALE: 1"=30'

