



**DRIPPING SPRINGS**  
Texas

Parks and Recreation Commission  
FY 2026 Projects Budget  
November 19, 2025

## PCS Improvements List

1. DSRP - Path to Pond	\$ 73,500
2. DSRP – Path to Playground	\$147,000
3. Restroom Improvements at Founders and SRP	\$225,000
4. DSRP Trail Signage	\$185,000
5. FMP Pool Furnace to Gas	\$ 50,000
6. SRP – Fence Project	
• Remove section of existing fence	\$ 15,000
• Replace current chain link	\$ 20,000
7. SRP – Replace Lights at Adult Softball Fields	\$ 15,000
8. SRP – Irrigation Improvements to Landscaping Beds	\$ 15,000
9. Skate Park Improvements (Possible Lights)	\$ 25,000
10. FMP – Trail Extension Project	\$ 3,000

### Dependent on Alternative Funding:

Rathgeber Design and Construction Documents – Phase 1	\$695,150
SRP – New Lights at the Soccer Field: Phase IV	\$400,000

### Consider for Future Budgets:

DSRP – Wayfinding Signage	\$100,000
Charro Ranch Park – Wayfinding Signage	\$100,000



### Parkland Dedication Fund:

*For funds received for fee-in-lieu of parkland dedication, a separate fund entitled “park fund” has been created to hold in trust money paid to be used solely and exclusively for the purpose of acquiring and/or improving public parks, trails, and recreational lands, and shall not be used for maintaining or operating park facilities or for any other purpose.*

### Park Development Fee Fund:

*The funds received as park development fees, the funds shall be expended on park maintenance, operation, acquisition, or improvements to park facilities.*



## FY 2026 Budget

Parkland Dedication Fund Balance	=	\$392,690
Park Development Fee Fund Balance	=	<u>\$116,610</u>
Total	=	\$509,300
Recommended Projects	=	<u>(\$285,500)</u>
Remaining Balance	=	\$223,800

### Recommended Projects for FY 2026:

- |   |   |             |
|---|---|-------------|
| 1. Path to Pond - DSRP                        | = | (\$ 73,500) |
| 2. Path to Playground – DSRP                  | = | (\$147,000) |
| 3. Natural Gas Furnace – FMP                  | = | (\$ 50,000) |
| 4. Fix Broken Lights at Adult Softball Fields | = | (\$ 15,000) |
| 5. Finish Storage Building - DSRP             |   |             |



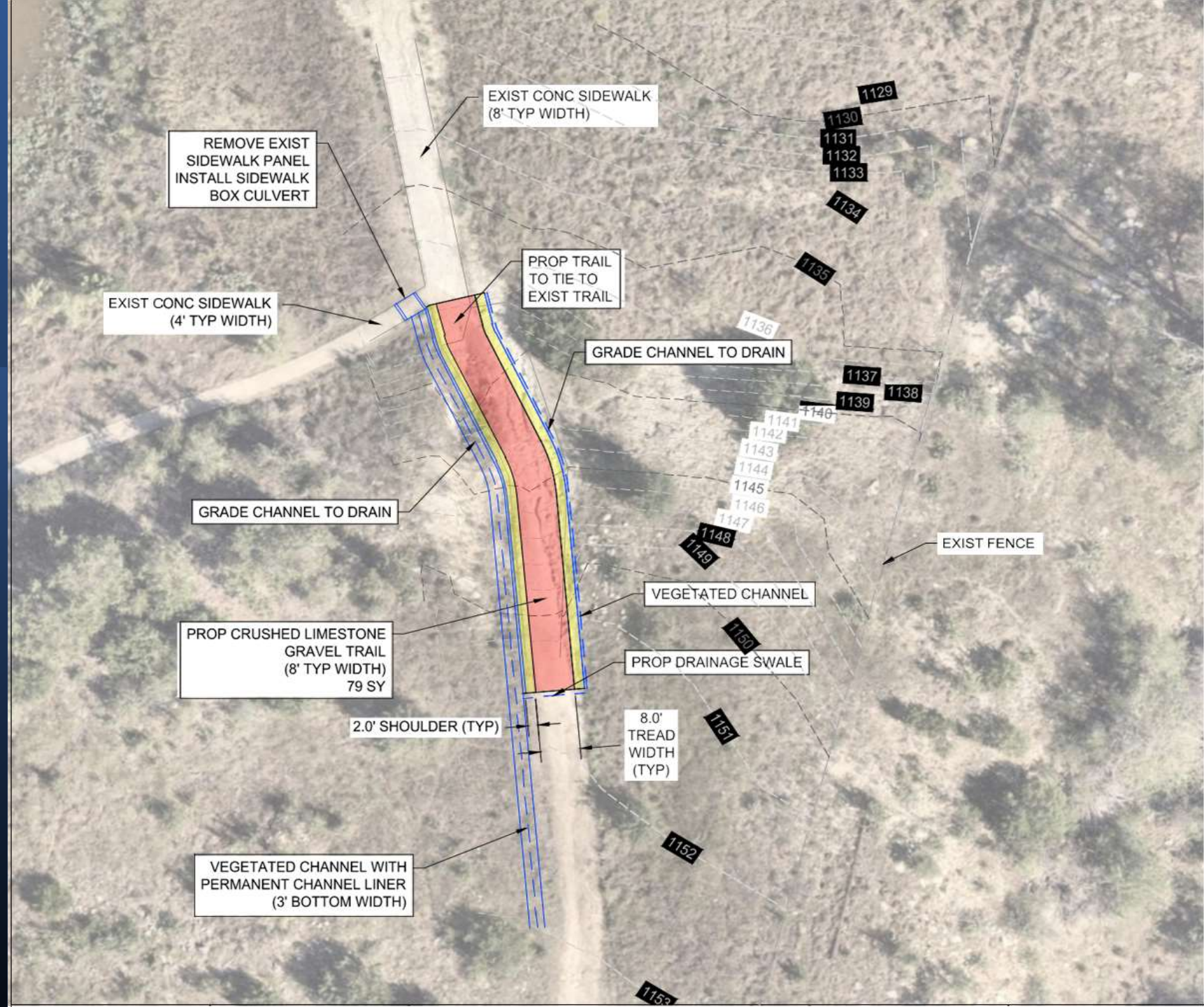


DSRP  
Path To Pond





# DSRP Path To Pond





DSRP

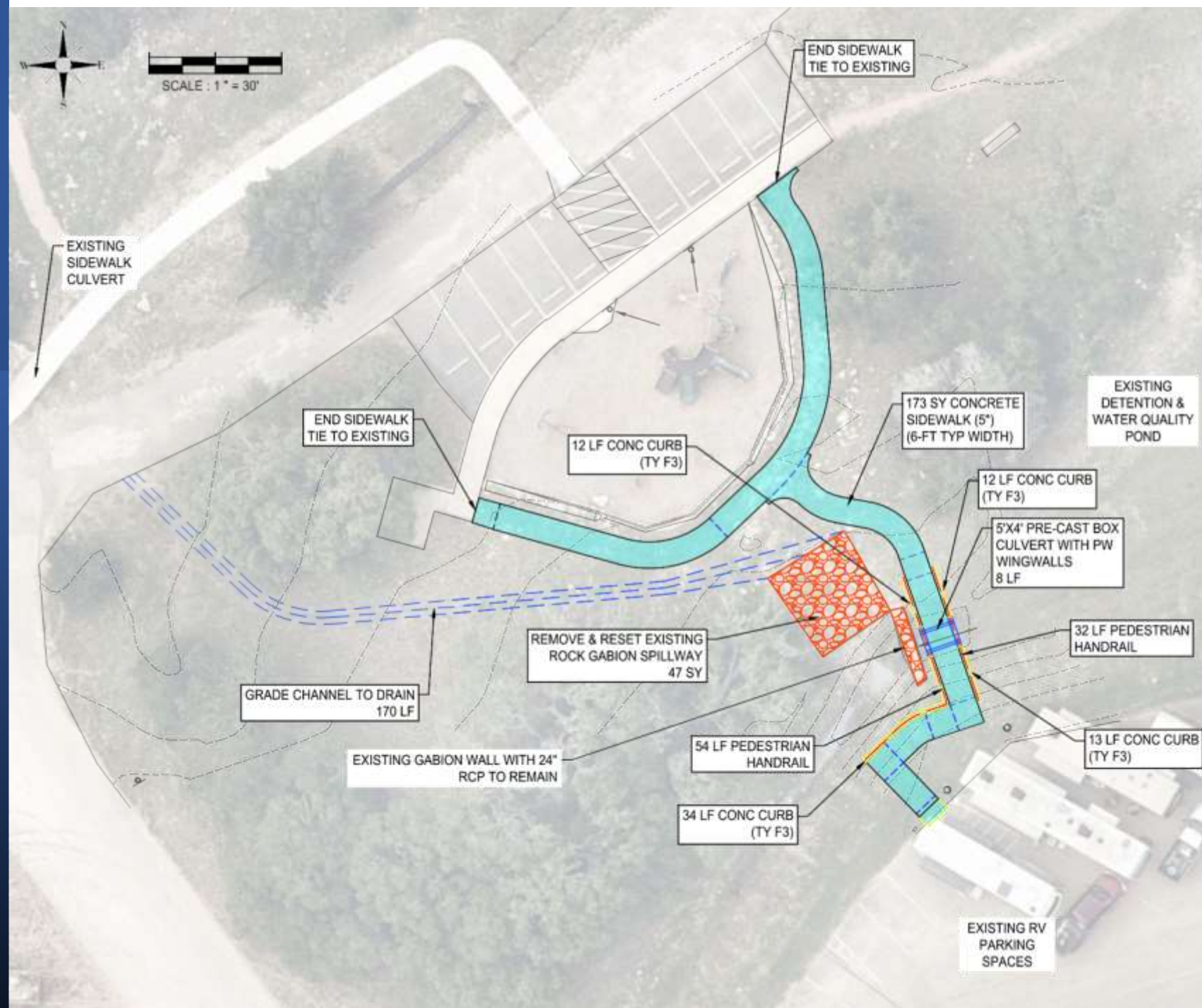
RV Parking Lot To  
Playground





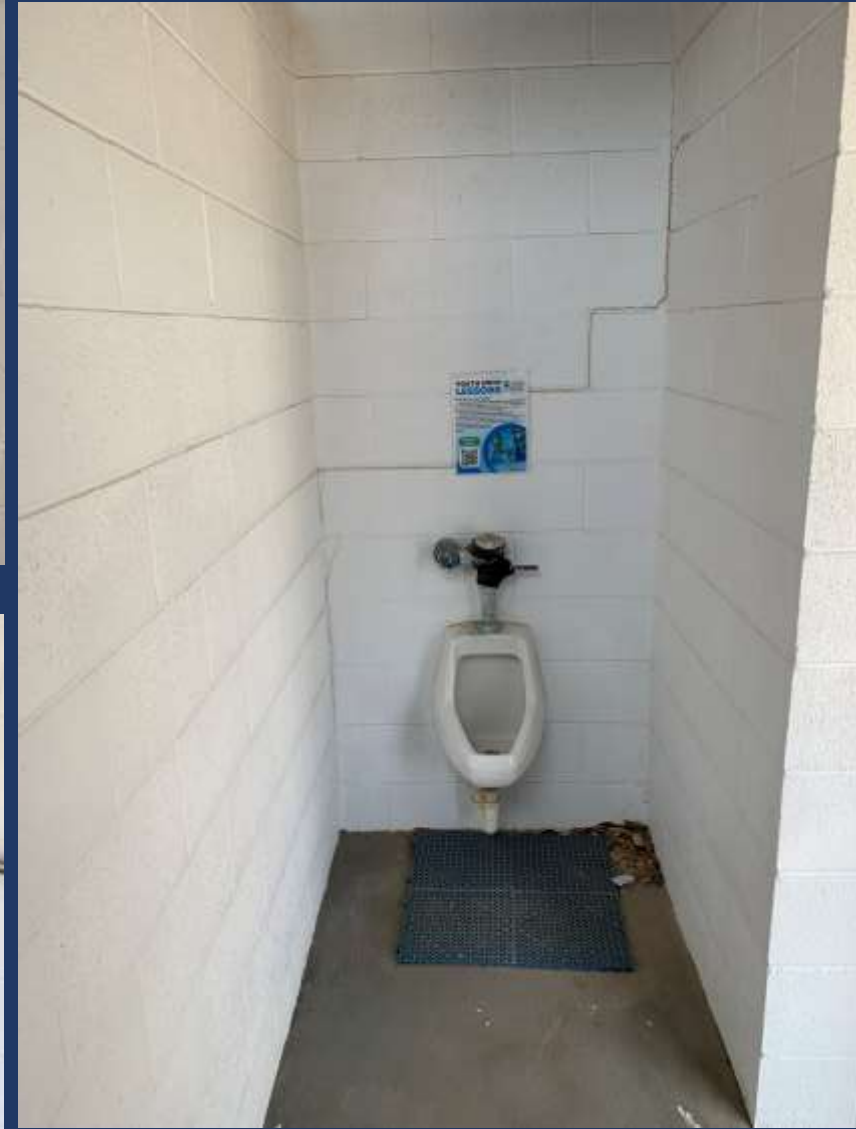
# DSRP

## RV Parking Lot To Playground

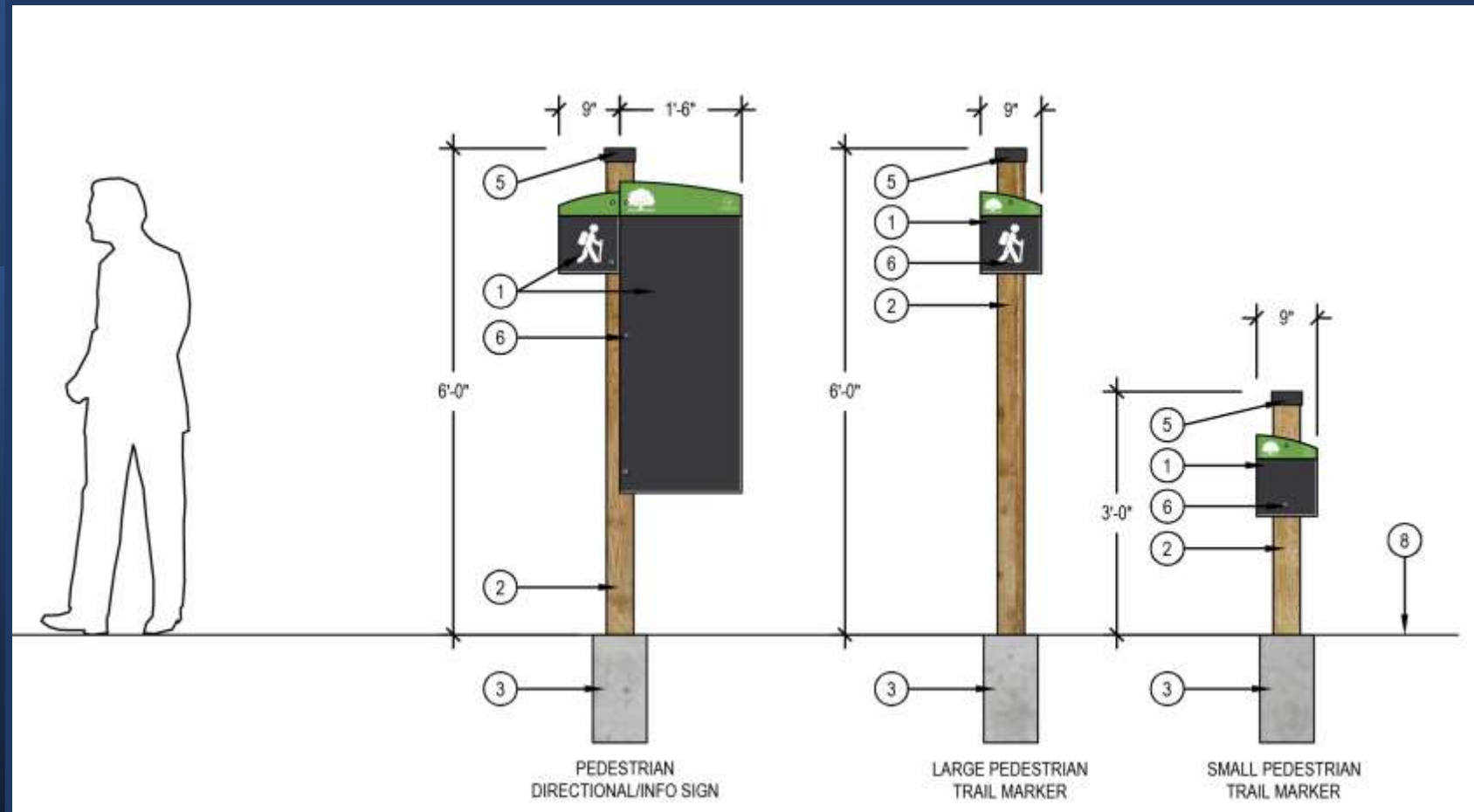




# Founders & SRP Restroom Improvements

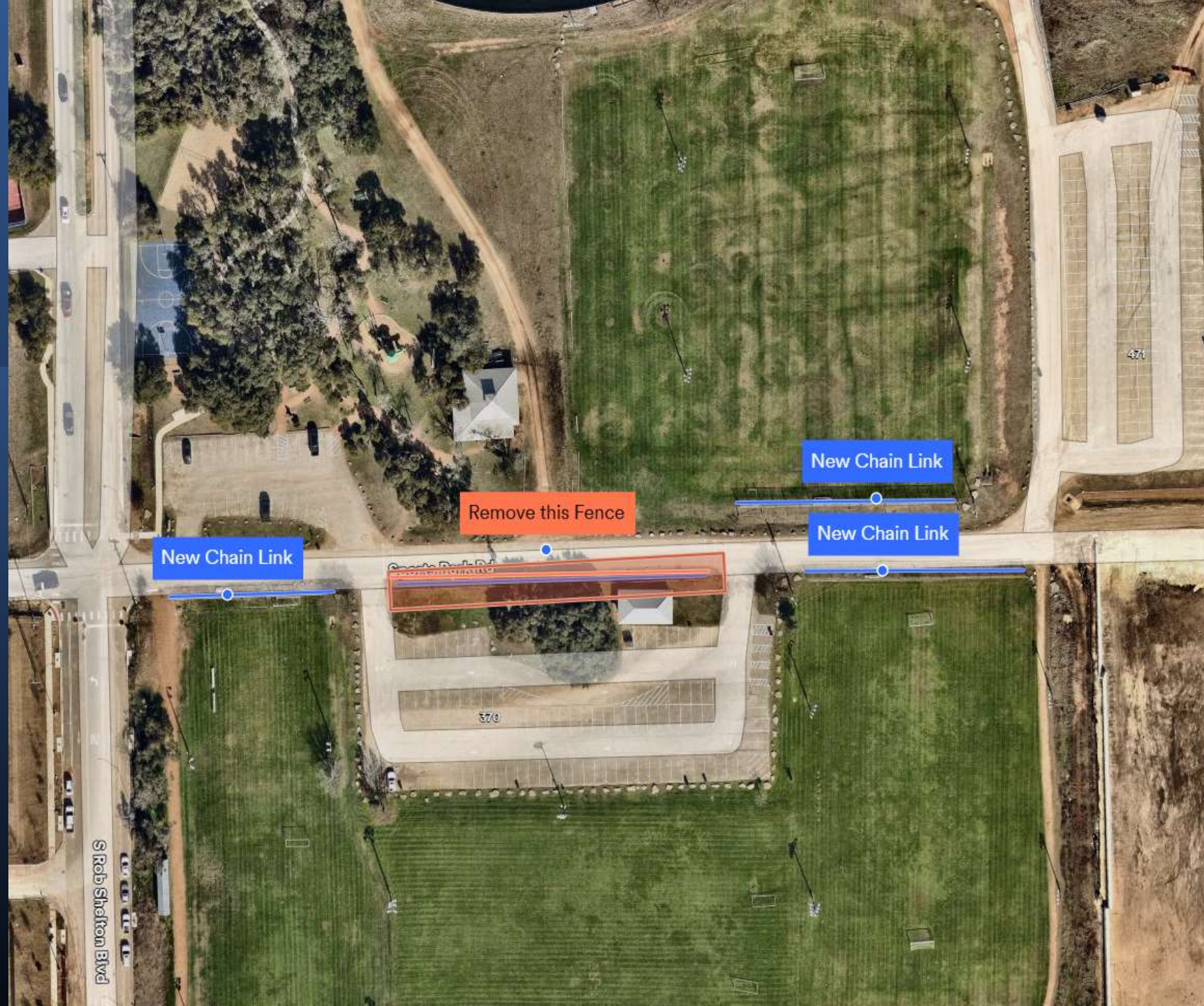


# DSRP Trail Wayfinding





# SRP Fence Project





SRP

Irrigation  
Improvements to  
the Landscaping  
Beds





# Founders Park Skatepark Lighting



Luminaire Schedule						
Symbol	Qty	Description	LLF	Luminaire Lumens	Mounting Height	Arm
+	5	FLT-PL-T3-WW-09	0.900	1360	0, 12	0
→	6	FLT-BFL-T4-WW-06	0.900	5661	25	6

Calculation Summary						
Description	Units	Avg	Max	Min	Avg/Min	Max/Min
Skatepark Area	Fc	1.78	2.5	0.5	3.56	5.00
Walkway	Fc	0.92	2.8	0.0	N.A.	N.A.



Founders Park  
Trail Extension  
Project





SRP

Park Athletic Field  
Lighting:

Phase 4: Soccer Field



## SRP

# Athletic Field Lighting Estimates

Phase 4: Soccer Fields (Middle)	\$ 400,000
Phase 3: Adult Softball Fields + Soccer Field	\$1,000,000
Phase 1: Baseball Field	\$ 400,000
Phase 2: Softball Field	\$ 250,000
Phase 5: Soccer Fields (South)	\$ 650,000
Sub Total	\$2,650,000
Contingency (10%)	\$ 265,000
Total	\$2,915,000

Prioritized by the Parks & Recreation Commission at their May 21<sup>st</sup> meeting.



Equipment  
Tractor  
\$40,000





Equipment  
Skid Steer  
\$71,000





Equipment  
Z Turn Mower  
\$14,000





Equipment  
Trailer  
\$15,000

