

# STEPHENSON HIGH SCHOOL

Dripping Springs, Texas

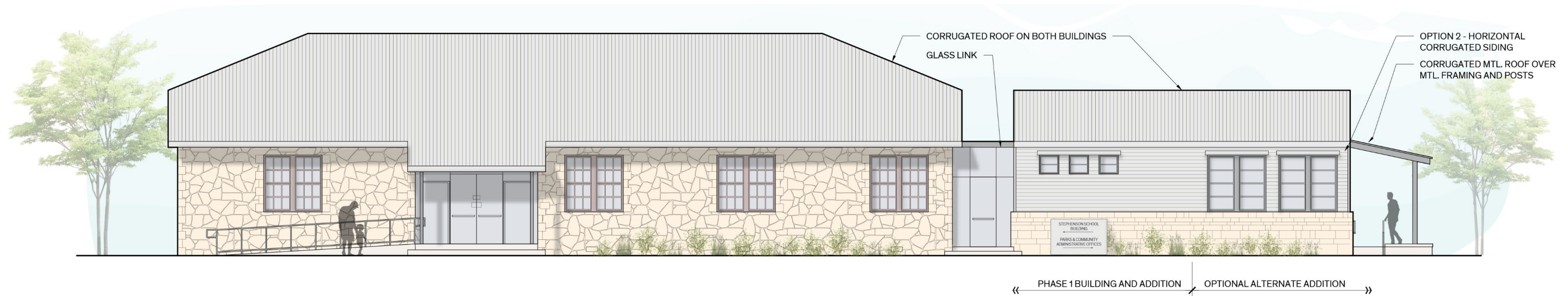


City of Dripping Springs  
Historic Preservation Commission

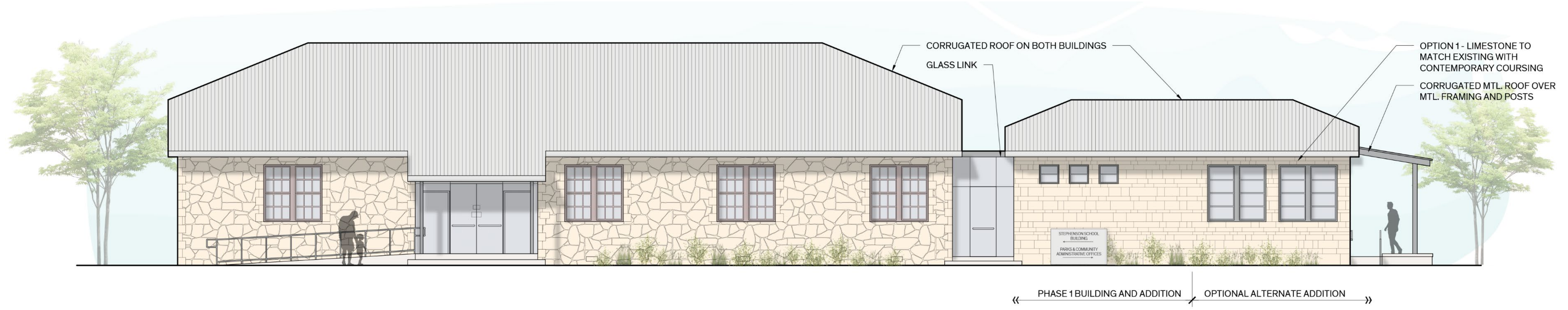
Revised Elevations

October 3, 2024

*Rehabilitation of the Historic Stephenson  
High School Building and Proposed Addition*



**Option 2 - East Elevation**  
 Scale: 3/32" = 1' 3/2/2023



**Option 1 - East Elevation** **Approved COA**  
 Scale: 3/32" = 1' 3/15/2023



## Option 2 - North Elevation

Scale: 3/32" = 1'

3/2/2023



## Option 1 - North Elevation

Scale: 3/32" = 1'

3/15/2023

Approved COA



Revised East Elevation



Previous East Elevation



Revised North Elevation



Previous North Elevation

# MATERIALS

Existing Limestone



Matching Cordova cream limestone in ashlar pattern



Galvanized Corrugated Metal



