

# CITY OF DRIPPING SPRINGS

## Park System Signage Phase 2: Sports & Recreation Park

### Issue for Construction

April 2024

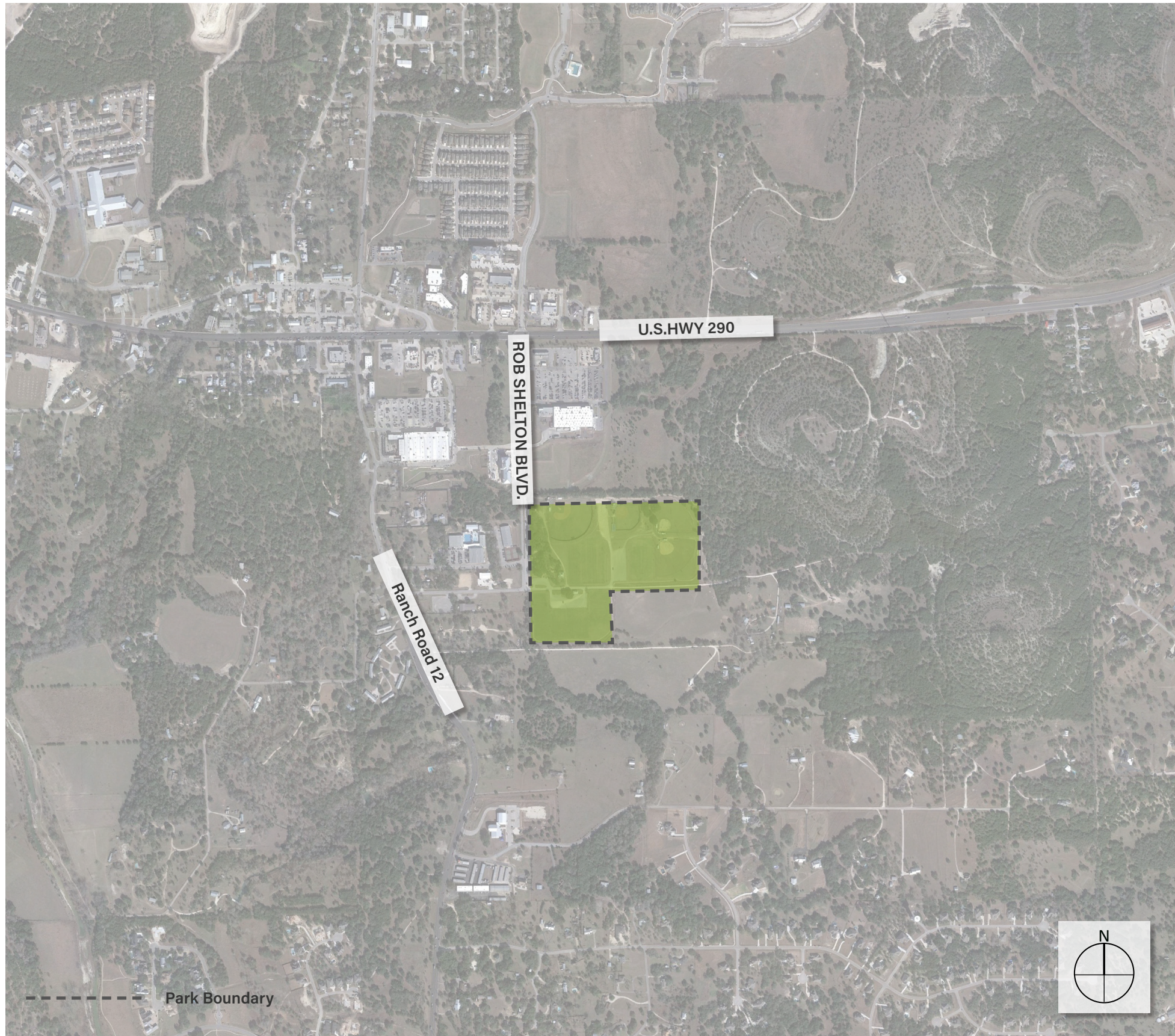
#### CONTENTS

- Key Map
- Existing Signage Inventory
- Proposed Signage Locations
- Proposed Signage Concepts
- Existing Sign Inventory Photo Array



**CLIENT**  
City of Dripping Springs  
511 Mercer Street  
Dripping Springs, Texas 78620

**DESIGN TEAM**  
Studio16:19  
305 W. Liberty Ave, Suite 100  
Round Rock, TX 78664



Dripping Springs Key Map

Disclaimer:  
 This document represents design progress and its provision, either electronic or hard copy, is to communicate design intent only. Original and published work may not be duplicated, used, or disclosed without the written consent of Studio16:19.



ENTRANCE MONUMENT SIGN (1) - RELOCATED



INFO KIOSK (1) - REMOVED BY CITY



TRAIL MARKERS (3) - REMOVED



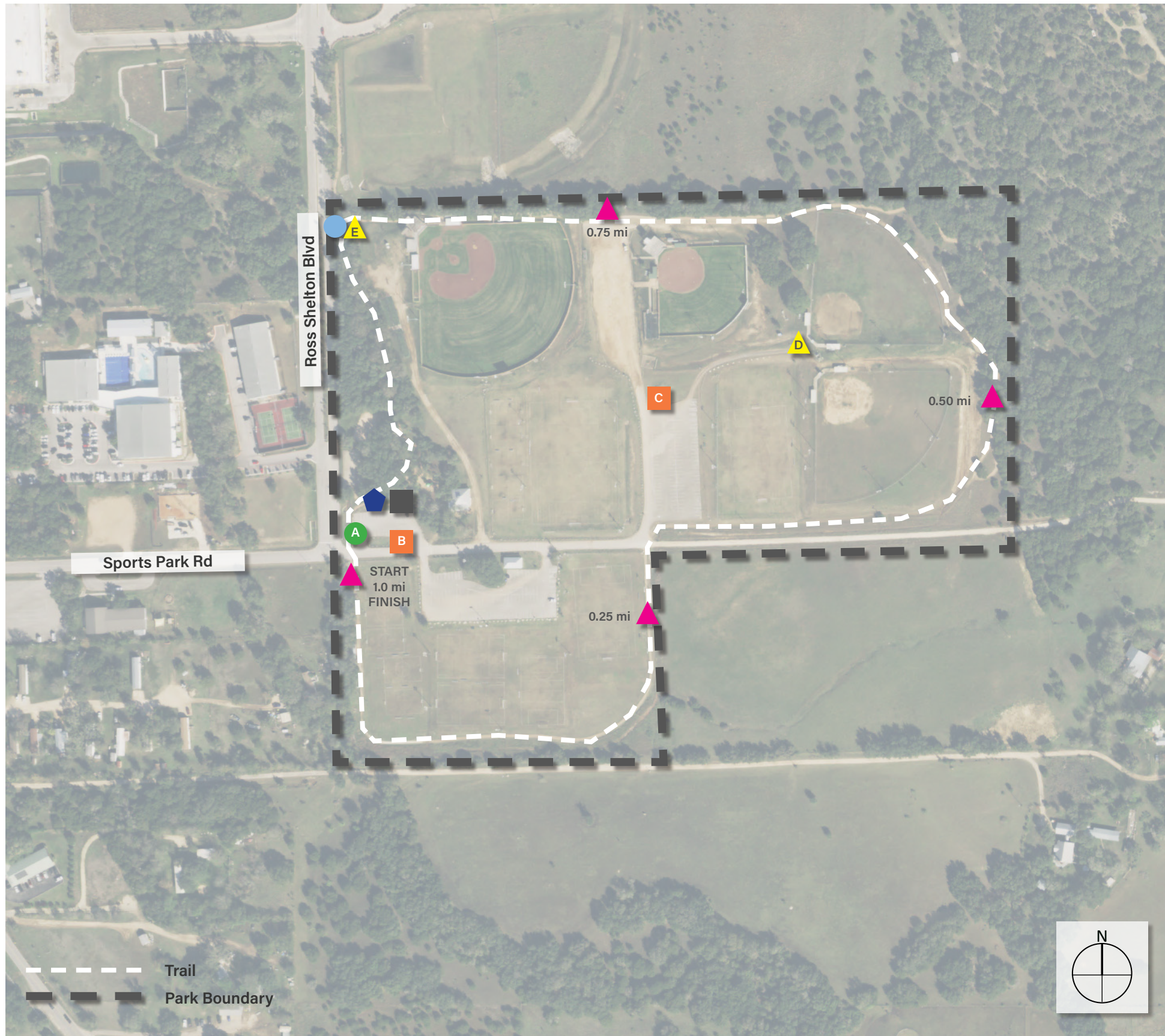
PARK RULES/INFO SIGN (2)  
REMOVED BY CITY



EXISTING SIGN TO REMAIN

Sports & Recreation Park - Existing Signage Inventory (Quantity)

Disclaimer:  
This document represents design progress and its provision, either electronic or hard copy, is to communicate design intent only. Original and published work may not be duplicated, used, or disclosed without the written consent of Studio16:19.



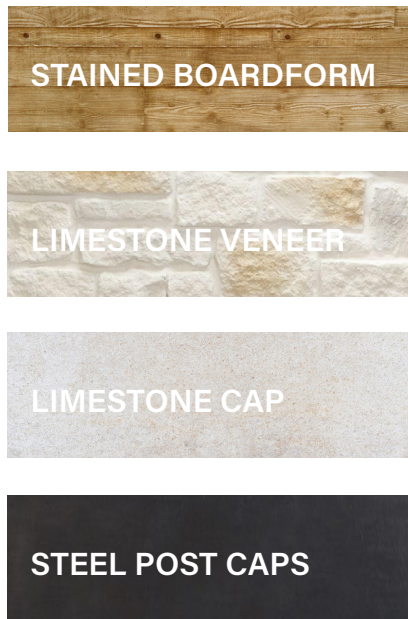
- **Replacement Vehicular Identification Sign (1)**
  - A. Primary Identification
- **Proposed Large Vehicular Wayfinding Sign (2)**
  - B. Playground
  - Basketball/Volleyball Courts
  - Soccer Fields
  - Baseball/Softball Fields
- C. Baseball/Softball Fields
- Adult Softball Fields
- Soccer Fields
- ◆ **Proposed Pedestrian Info/Kiosk Sign (1)**
- ▲ **Proposed Pedestrian Directional Sign (2)**
  - D. Park Rules
- E. Picnic Area
- Concession Stand
- Baseball/Softball Fields
- Restrooms
- Playground
- Trail
- ▲ **Proposed Small Pedestrian Trail Marker (4)**
- **Existing Sign to Remain (1)**
- **Existing Monument Sign Relocation (1)**

Sign to be dismantled and reconstructed with new base, to match proposed monument signage. Sign face and timber posts to remain and be reused. Contractor to stake new location of sign for landscape architect/owner approval.

Sports & Recreation Park - Proposed Signage Locations (Quantity)

Disclaimer:  
This document represents design progress and its provision, either electronic or hard copy, is to communicate design intent only. Original and published work may not be duplicated, used, or disclosed without the written consent of Studio16:19.

**MATERIALS**

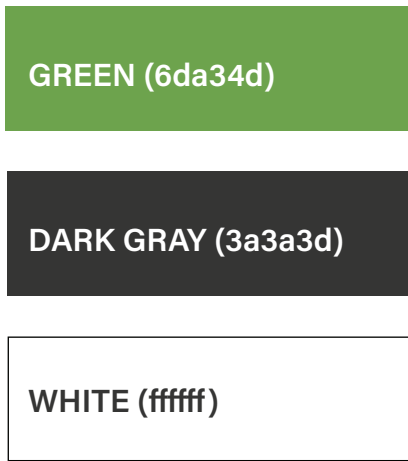


- ① 1/2" THICK IZONE IMAGING MESSAGE PANEL, PER MANUFACTURER'S SPECIFICATIONS
- ② 5"x5" INTEGRAL COLOR BOARDFORM CONCRETE POST, BUTTERFIELD COLOR: GAUNTLET GRAY OR EQUIVALENT
- ③ CONCRETE FOOTER BY SIGN FABRICATOR STRUCTURAL DESIGN
- ④ CMU CORE BASE WITH WHITE LEUDERS LIMESTONE VENEER
- ⑤ STEEL POST CAP, POWDERCOAT BLACK SATIN
- ⑥ 5/16" GALVANIZED HEX BOLTS, PANEL MOUNTED INTO POST CHANNELS.
- ⑦ 2" CUT LIMESTONE CAP TO MATCH LIMESTONE VENEER
- ⑧ 7" FLAT CUT PIN MOUNTED LETTERS, 1/4" THICK ALUMINUM, COLOR TO MATCH IZONE DARK GREY
- ⑧ FINISH GRADE, TYP.

**1 VEHICULAR IDENTIFICATION SIGNAGE**

SCALE: 3/8" = 1'-0"

**IZONE PANEL COLORS**



- ① 1/2" THICK IZONE IMAGING MESSAGE PANEL, PER MANUFACTURER'S SPECIFICATIONS
- ② 5"x5" INTEGRAL COLOR BOARDFORM CONCRETE POST, BUTTERFIELD COLOR U10 SONORAN TAN OR EQUIVALENT
- ③ CONCRETE FOOTER BY SIGN FABRICATOR STRUCTURAL DESIGN
- ④ CMU CORE BASE WITH TAN LEUDERS LIMESTONE VENEER
- ⑤ STEEL POST CAP, POWDERCOAT BLACK SATIN
- ⑥ 5/16" GALVANIZED HEX BOLTS, PANEL MOUNTED INTO POST CHANNELS.
- ⑦ 2" CAST STONE CAP TO MATCH LIMESTONE VENEER
- ⑧ FINISH GRADE, TYP.

**FONT:**

Futura PT: Medium

ABCDEFGHIJKLMNOPQRSTUVWXYZ  
abcdefghijklmnopqrstuvwxyz  
1234567890

**2 VEHICULAR IDENTIFICATION SIGNAGE**

SCALE: 3/8" = 1'-0"

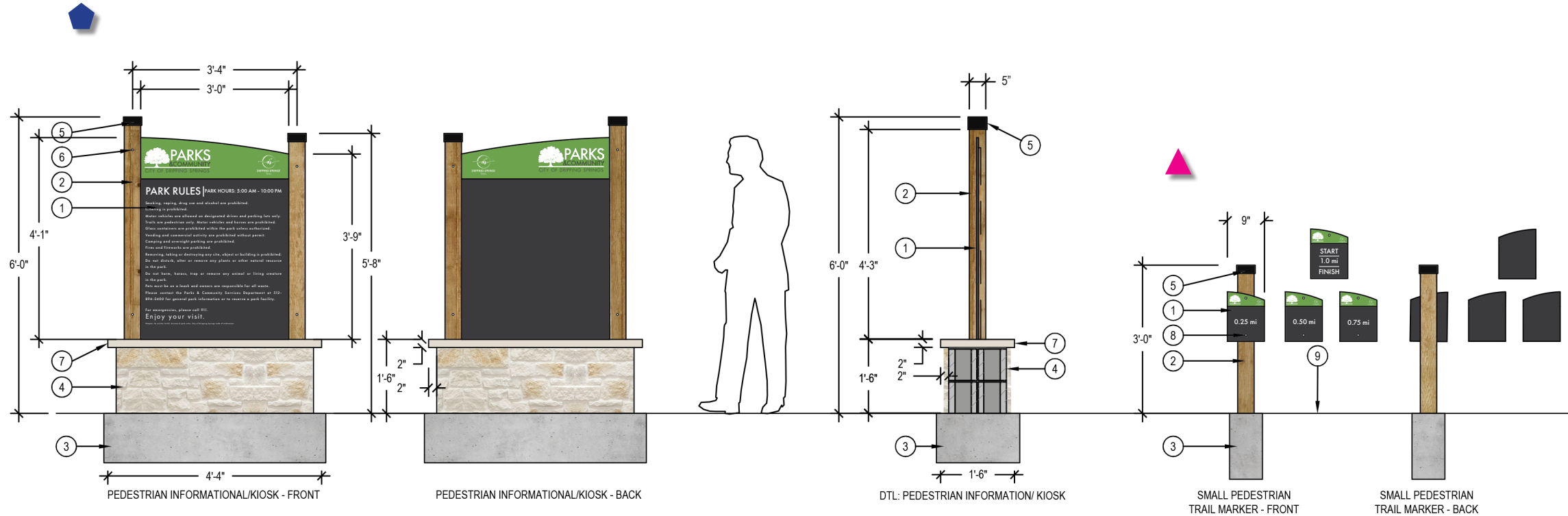
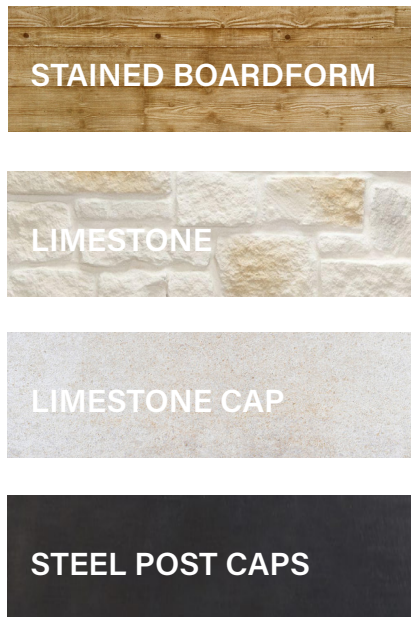
Note: Contractor to provide signed and sealed professional engineering documents for all sign foundations and footings, to be reviewed and approved by the City Engineer. Contractor to include all engineering related costs in statement of bid. Prior to sign installation, contractor shall field locate and stake sign locations for review and approval by the City Engineer. Contractor shall notify City Inspector to inspect sign panel material and sign posts for quality and material defects after delivery to the site and prior to installation.

Disclaimer: This document represents design progress and its provision, either electronic or hard copy, is to communicate design intent only. Original and published work may not be duplicated, used, or disclosed without the written consent of Studio16:19.

**Sports & Recreation Park Signage**



**MATERIALS**

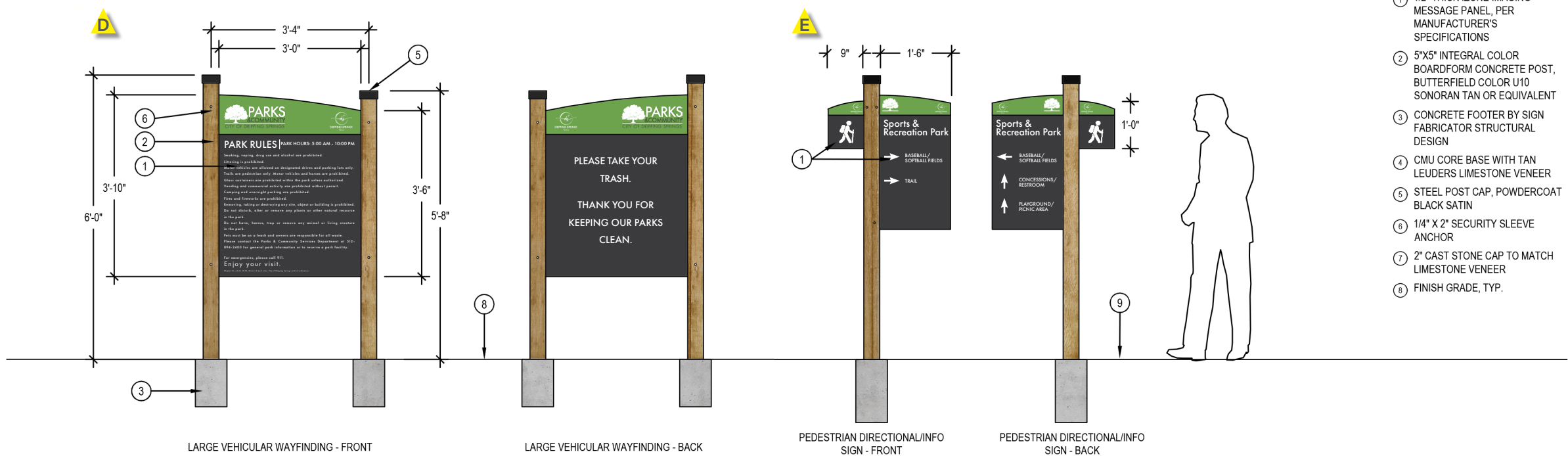
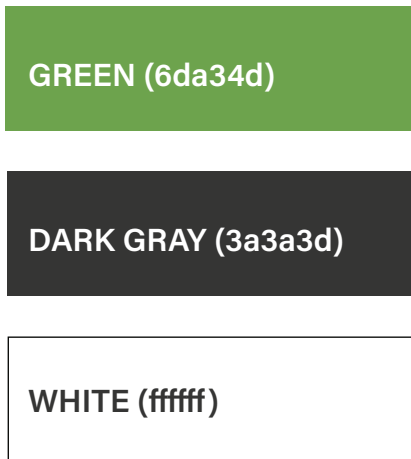


- ① 1/2" THICK IZONE IMAGING MESSAGE PANEL, PER MANUFACTURER'S SPECIFICATIONS
- ② 5"x5" INTEGRAL COLOR BOARDFORM CONCRETE POST, BUTTERFIELD COLOR U10 SONORAN TAN OR EQUIVALENT
- ③ CONCRETE FOOTER BY SIGN FABRICATOR STRUCTURAL DESIGN
- ④ CMU CORE BASE WITH TAN LEUDERS LIMESTONE VENEER
- ⑤ STEEL POST CAP, POWDERCOAT BLACK SATIN
- ⑥ 5/16" GALVANIZED HEX BOLTS, PANEL MOUNTED INTO POST CHANNELS.
- ⑦ 2" CAST STONE CAP TO MATCH LIMESTONE VENEER
- ⑧ 1/4" X 2" SECURITY SLEEVE ANCHOR
- ⑨ FINISH GRADE, TYP.

**1 PEDESTRIAN IDENTIFICATION SIGNAGE**

SCALE: 3/8" = 1'-0"

**IZONE PANEL COLORS**



- ① 1/2" THICK IZONE IMAGING MESSAGE PANEL, PER MANUFACTURER'S SPECIFICATIONS
- ② 5"x5" INTEGRAL COLOR BOARDFORM CONCRETE POST, BUTTERFIELD COLOR U10 SONORAN TAN OR EQUIVALENT
- ③ CONCRETE FOOTER BY SIGN FABRICATOR STRUCTURAL DESIGN
- ④ CMU CORE BASE WITH TAN LEUDERS LIMESTONE VENEER
- ⑤ STEEL POST CAP, POWDERCOAT BLACK SATIN
- ⑥ 1/4" X 2" SECURITY SLEEVE ANCHOR
- ⑦ 2" CAST STONE CAP TO MATCH LIMESTONE VENEER
- ⑧ FINISH GRADE, TYP.

**FONT:**

Futura PT: Medium

ABCDEFGHIJKLMNOPQRSTUVWXYZ  
abcdefghijklmnopqrstuvwxyz  
1234567890

**2 PEDESTRIAN IDENTIFICATION SIGNAGE**

SCALE: 3/8" = 1'-0"

Note: Contractor to provide signed and sealed professional engineering documents for all sign foundations and footings, to be reviewed and approved by the City Engineer. Contractor to include all engineering related costs in statement of bid. Prior to sign installation, contractor shall field locate and stake sign locations for review and approval by the City Engineer. Contractor shall notify City Inspector to inspect sign panel material and sign posts for quality and material defects after delivery to the site and prior to installation.

Disclaimer: This document represents design progress and its provision, either electronic or hard copy, is to communicate design intent only. Original and published work may not be duplicated, used, or disclosed without the written consent of Studio16:19.

**Sports & Recreation Park Signage**





SPORTS & REC. PARK  
ENTRANCE MONUMENT SIGN



SPORTS & REC. PARK  
INFO KIOSK



SPORTS & REC. PARK  
INFO SIGN



SPORTS & REC. PARK  
INFO MONUMENT (TO REMAIN)



SPORTS & REC. PARK  
MILE MARKER 0.00



SPORTS & REC. PARK  
MILE MARKER 0.25



SPORTS & REC. PARK  
MILE MARKER 0.25

Appendix: Sign Inventory Photo Array for Reference

Disclaimer:  
This document represents design progress and its provision, either electronic or hard copy, is to communicate design intent only. Original and published work may not be duplicated, used, or disclosed without the written consent of Studio16:19.