

# CITY OF DRIPPING SPRINGS

## Wayfinding Signage Plan Issue for Bid Package

August 2025



**DRIPPING SPRINGS**  
Texas

**CLIENT**  
**City of Dripping Springs**  
511 W Mercer Street  
Dripping Springs, TX 78620

**studio 16:19**<sup>TM</sup>

**DESIGN TEAM**  
**Studio16:19, llc**  
305 W. Liberty Ave, Suite 100  
Round Rock, TX 78664



# TABLE OF CONTENTS

OVERALL CITY MAP ..... 3

WAYFINDING SIGNAGE LOCATIONS ..... 4

DRIPPING SPRINGS CENTRAL OVERALL MAP ..... 4

DRIPPING SPRINGS CENTRAL ENLARGEMENTS ..... 5-10

DRIPPING SPRINGS NORTH MAP ..... 11

DRIPPING SPRINGS SOUTH MAP ..... 12

WAYFINDING SIGNS ..... 13

SIGN DETAILS & NOTES ..... 13

WAYFINDING DESTINATIONS MOCKUP ..... 14-15

WAYFINDING MOCKUP ..... 17

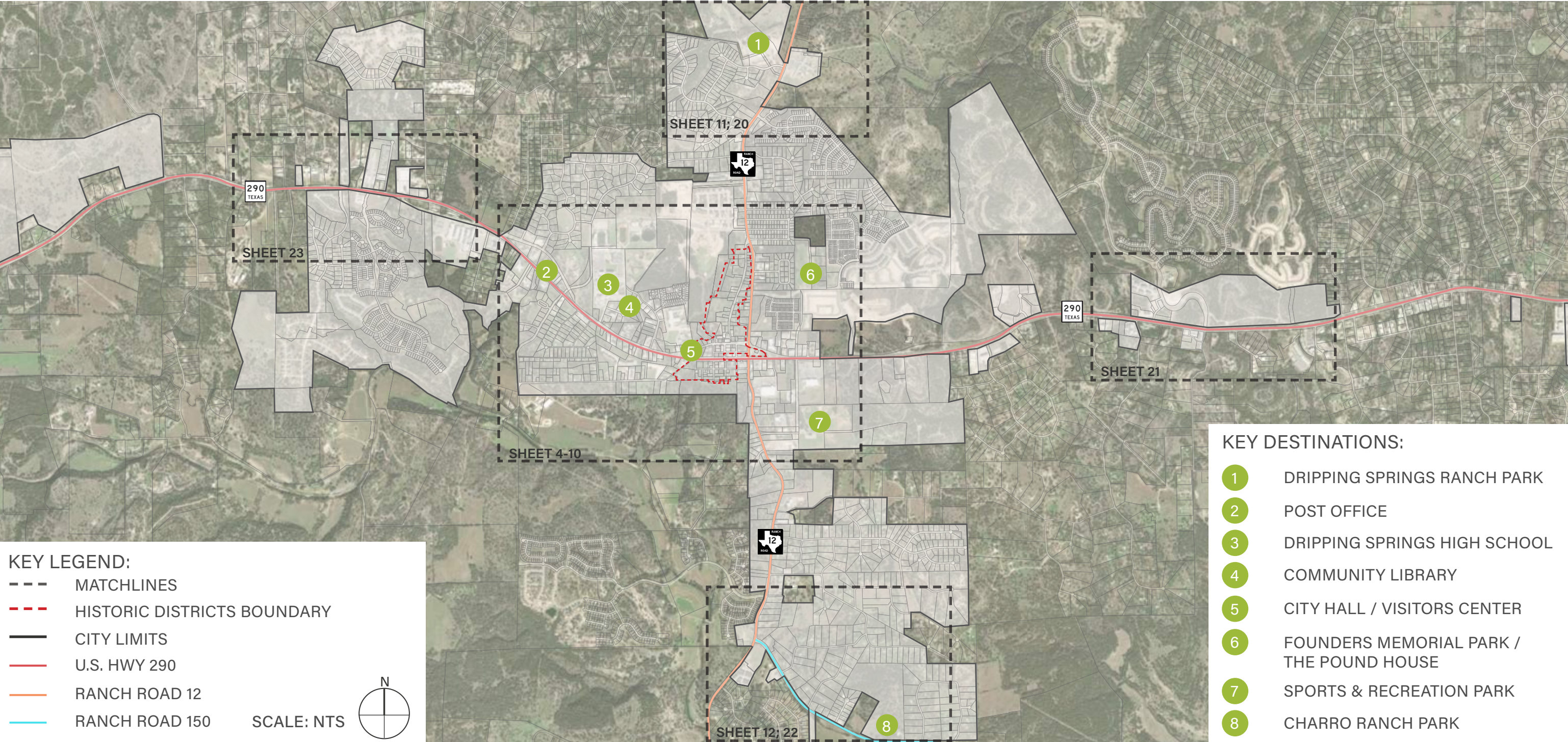
TXDOT DETAILS ..... 18-21

Disclaimer:  
This document represents design progress and its provision, either electronic or hard copy, is to communicate design intent only. Original and published work may not be duplicated, used, or disclosed without the written consent of Studio16:19.



# DRIPPING SPRINGS, TEXAS

## DRIPPING SPRINGS OVERALL CITY MAP

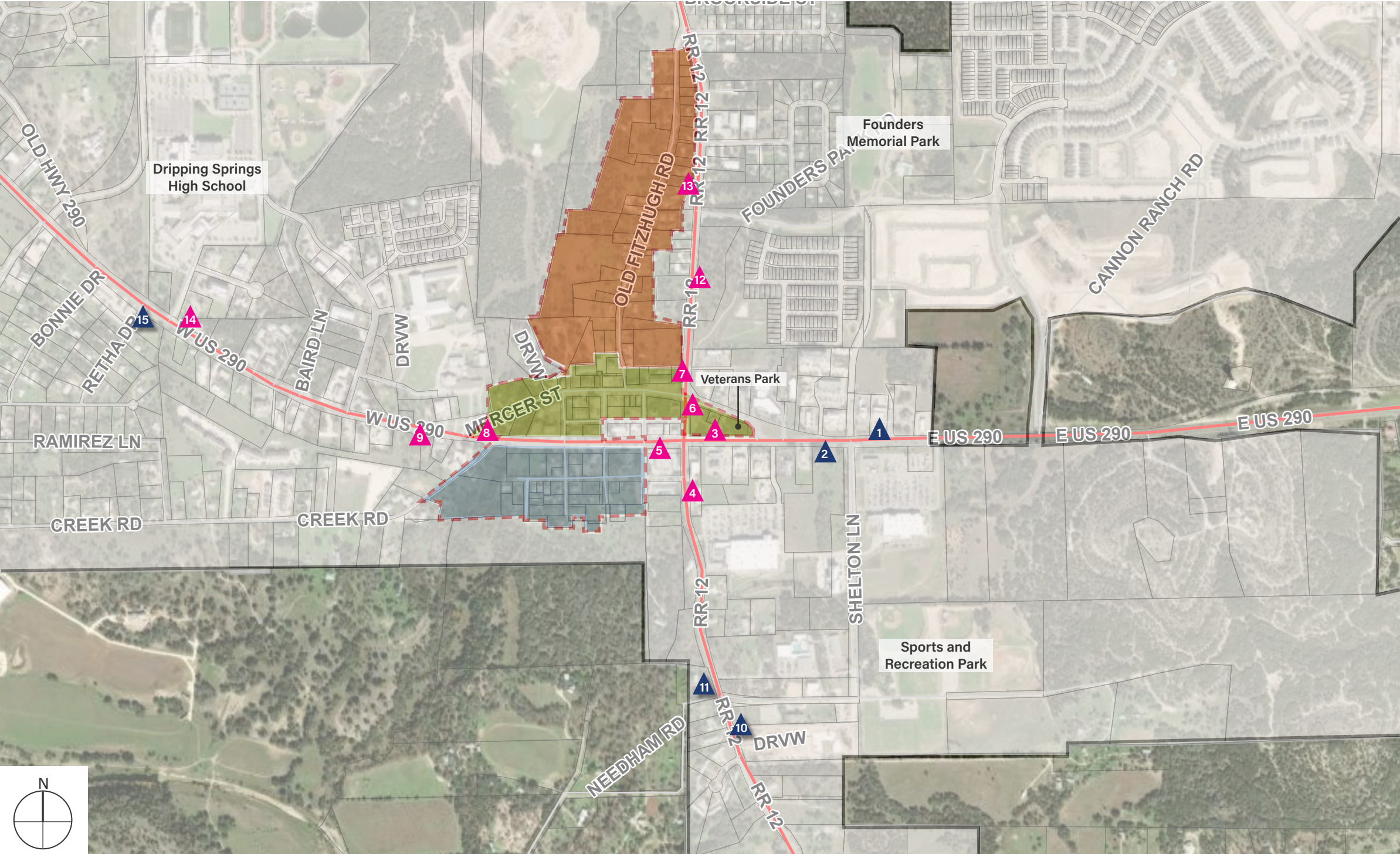


Disclaimer:  
This document represents design progress and its provision, either electronic or hard copy, is to communicate design intent only. Original and published work may not be duplicated, used, or disclosed without the written consent of Studio16:19.



# WAYFINDING SIGN LOCATIONS

## DRIPPING SPRINGS CENTRAL OVERALL MAP



KEY LEGEND:

WAYFINDING SIGNAGE

REPLACEMENT WAYFINDING

HISTORIC DISTRICTS BOUNDARY

MERCER HISTORIC DISTRICT

OLD FITZHUGH ROAD HISTORIC DISTRICT

HAYS STREET HISTORIC DISTRICT

CITY LIMITS

- NOTES:
1.

Contractor to provide demolition, as needed, at all sign locations, and to repair/replace any concrete removed or damaged during construction.
2.

Contractor to coordinate with City and TXDOT to schedule any required traffic controls.
3.

Contractor to provide new footings for all signs.
4.

Contractor to contact 811 prior to installation.
5.

Contractor to field locate and stake all signage for landscape architect and owner approval.
6.

Contractor to provide shop-drawings and mock-ups for all signage prior to construction for landscape architect and owner approval.
7.

Design Development drawings only.

SCALE: NTS

Disclaimer:  
This document represents design progress and its provision, either electronic or hard copy, is to communicate design intent only. Original and published work may not be duplicated, used, or disclosed without the written consent of Studio16:19.



# WAYFINDING SIGN LOCATIONS

## DRIPPING SPRINGS CENTRAL ENLARGEMENT



**KEY LEGEND:**

- WAYFINDING SIGNAGE
- REPLACEMENT WAYFINDING
- HISTORIC DISTRICTS BOUNDARY
- MERCER HISTORIC DISTRICT
- OLD FITZHUGH ROAD HISTORIC DISTRICT
- HAYS STREET HISTORIC DISTRICT
- CITY LIMITS

- NOTES:**
1. Contractor to provide demolition, as needed, at all sign locations, and to repair/replace any concrete removed or damaged during construction.
  2. Contractor to coordinate with City and TXDOT to schedule any required traffic controls.
  3. Contractor to provide new footings for all signs.
  4. Contractor to contact 811 prior to installation.
  5. Contractor to field locate and stake all signage for landscape architect and owner approval.
  6. Contractor to provide shop-drawings and mock-ups for all signage prior to construction for landscape architect and owner approval.
  7. Design Development drawings only.

Disclaimer:  
This document represents design progress and its provision, either electronic or hard copy, is to communicate design intent only. Original and published work may not be duplicated, used, or disclosed without the written consent of Studio16:19.



# WAYFINDING SIGN LOCATIONS

## DRIPPING SPRINGS CENTRAL ENLARGEMENT



NORTH BOUND ON RANCH ROAD 12 @ U.S. HWY 290



EAST BOUND ON U.S. HWY 290 @ RANCH ROAD 12



NORTH BOUND ON RANCH ROAD 12 @ MERCER ST

**KEY LEGEND:**

- ▲ WAYFINDING SIGNAGE
- ▲ REPLACEMENT WAYFINDING
- - - HISTORIC DISTRICTS BOUNDARY
- MERCER HISTORIC DISTRICT
- OLD FITZHUGH ROAD HISTORIC DISTRICT
- HAYS STREET HISTORIC DISTRICT
- CITY LIMITS

- NOTES:**
1. Contractor to provide demolition, as needed, at all sign locations, and to repair/replace any concrete removed or damaged during construction.
  2. Contractor to coordinate with City and TXDOT to schedule any required traffic controls.
  3. Contractor to provide new footings for all signs.
  4. Contractor to contact 811 prior to installation.
  5. Contractor to field locate and stake all signage for landscape architect and owner approval.
  6. Contractor to provide shop-drawings and mock-ups for all signage prior to construction for landscape architect and owner approval.
  7. Design Development drawings only.



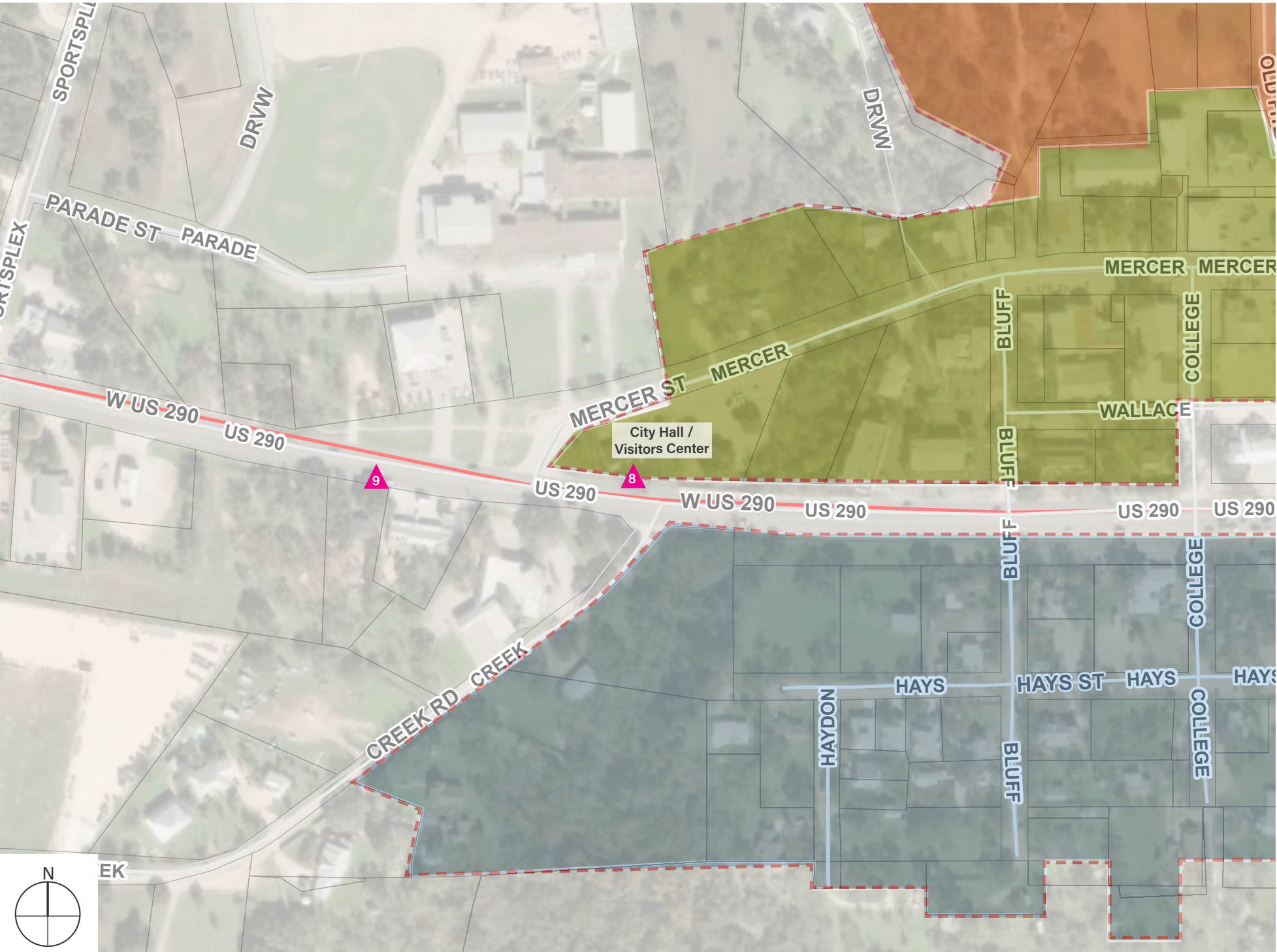
SOUTH BOUND ON RANCH ROAD 12 @ MERCER ST

Disclaimer:  
This document represents design progress and its provision, either electronic or hard copy, is to communicate design intent only. Original and published work may not be duplicated, used, or disclosed without the written consent of Studio16:19.



# WAYFINDING SIGN LOCATIONS

## DRIPPING SPRINGS CENTRAL ENLARGEMENT



WEST BOUND ON U.S. HWY 290 @  
MERCER ST



EAST BOUND ON U.S. HWY 290, WEST  
OF CITGO GAS STATION

**KEY LEGEND:**

- WAYFINDING SIGNAGE
- REPLACEMENT WAYFINDING
- HISTORIC DISTRICTS BOUNDARY
- MERCER HISTORIC DISTRICT
- OLD FITZHUGH ROAD HISTORIC DISTRICT
- HAYS STREET HISTORIC DISTRICT
- CITY LIMITS

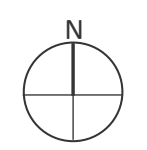
- NOTES:**
1. Contractor to provide demolition, as needed, at all sign locations, and to repair/replace any concrete removed or damaged during construction.
  2. Contractor to coordinate with City and TXDOT to schedule any required traffic controls.
  3. Contractor to provide new footings for all signs.
  4. Contractor to contact 811 prior to installation.
  5. Contractor to field locate and stake all signage for landscape architect and owner approval.
  6. Contractor to provide shop-drawings and mock-ups for all signage prior to construction for landscape architect and owner approval.
  7. Design Development drawings only.

Disclaimer:  
This document represents design progress and its provision, either electronic or hard copy, is to communicate design intent only. Original and published work may not be duplicated, used, or disclosed without the written consent of Studio16:19.



# WAYFINDING SIGN LOCATIONS

## DRIPPING SPRINGS CENTRAL ENLARGEMENT



SCALE: NTS



- KEY LEGEND:**
- WAYFINDING SIGNAGE
  - REPLACEMENT WAYFINDING
  - HISTORIC DISTRICT
  - CITY LIMITS

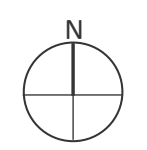
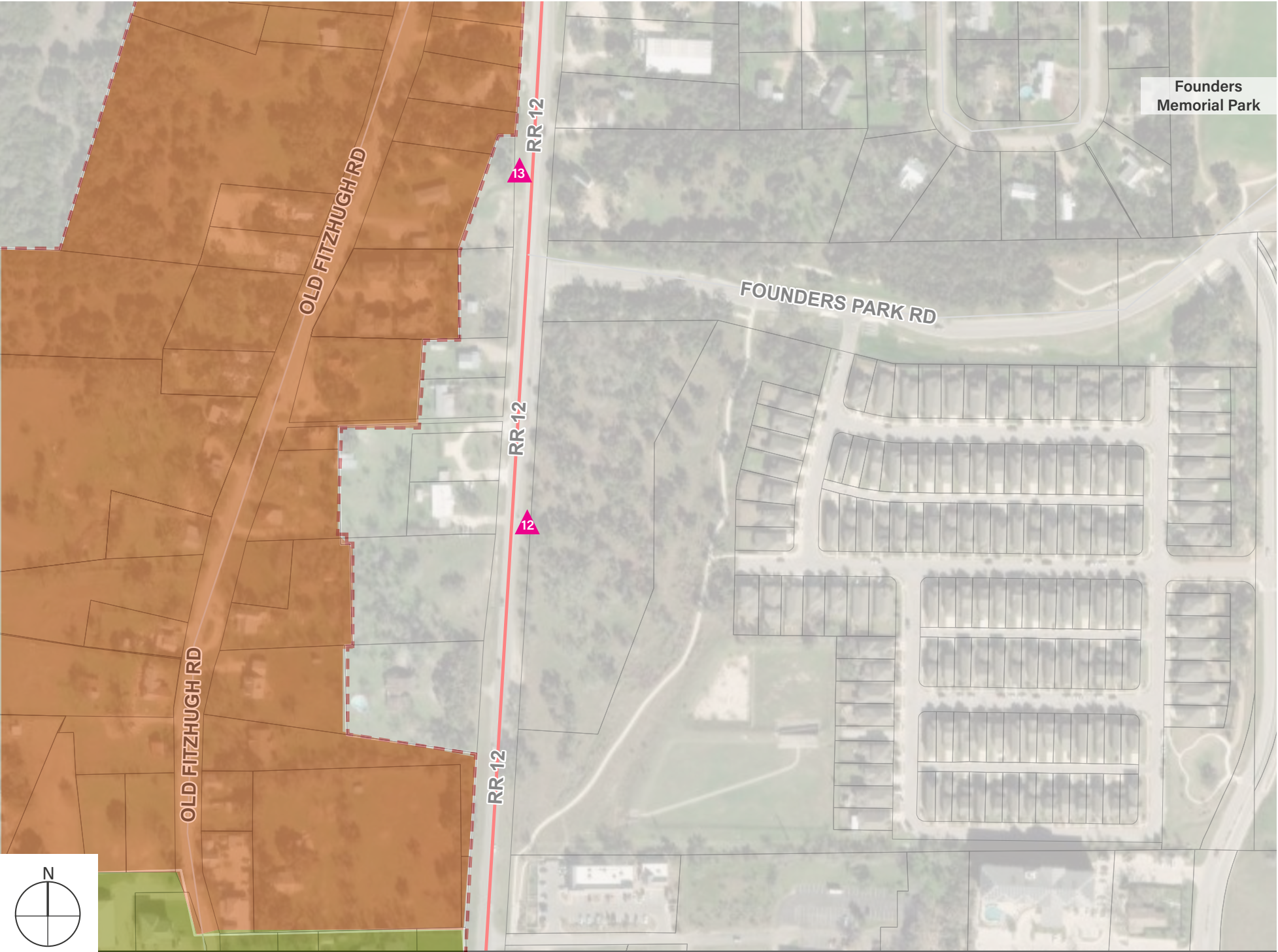
- NOTES:**
1. Contractor to provide demolition, as needed, at all sign locations, and to repair/replace any concrete removed or damaged during construction.
  2. Contractor to coordinate with City and TXDOT to schedule any required traffic controls.
  3. Contractor to provide new footings for all signs.
  4. Contractor to contact 811 prior to installation.
  5. Contractor to field locate and stake all signage for landscape architect and owner approval.
  6. Contractor to provide shop-drawings and mock-ups for all signage prior to construction for landscape architect and owner approval.
  7. Design Development drawings only.

Disclaimer:  
This document represents design progress and its provision, either electronic or hard copy, is to communicate design intent only. Original and published work may not be duplicated, used, or disclosed without the written consent of Studio16:19.



# WAYFINDING SIGN LOCATIONS

## DRIPPING SPRINGS CENTRAL ENLARGEMENT



SCALE: NTS



### KEY LEGEND:

- WAYFINDING SIGNAGE
- REPLACEMENT WAYFINDING
- HISTORIC DISTRICTS BOUNDARY
- MERCER HISTORIC DISTRICT
- OLD FITZHUGH ROAD HISTORIC DISTRICT
- HAYS STREET HISTORIC DISTRICT
- CITY LIMITS

### NOTES:

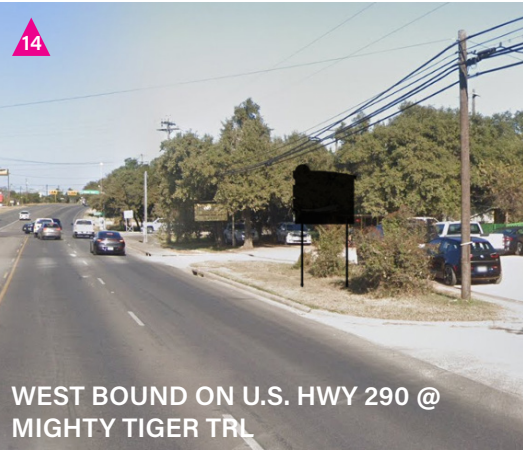
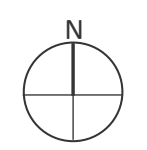
1. Contractor to provide demolition, as needed, at all sign locations, and to repair/replace any concrete removed or damaged during construction.
2. Contractor to coordinate with City and TXDOT to schedule any required traffic controls.
3. Contractor to provide new footings for all signs.
4. Contractor to contact 811 prior to installation.
5. Contractor to field locate and stake all signage for landscape architect and owner approval.
6. Contractor to provide shop-drawings and mock-ups for all signage prior to construction for landscape architect and owner approval.
7. Design Development drawings only.

Disclaimer:  
This document represents design progress and its provision, either electronic or hard copy, is to communicate design intent only. Original and published work may not be duplicated, used, or disclosed without the written consent of Studio16:19.



# WAYFINDING SIGN LOCATIONS

## DRIPPING SPRINGS CENTRAL ENLARGEMENT



WEST BOUND ON U.S. HWY 290 @ MIGHTY TIGER TRL



EAST BOUND ON U.S. HWY 290 @ MIGHTY TIGER TRL

**KEY LEGEND:**

- WAYFINDING SIGNAGE
- REPLACEMENT WAYFINDING
- HISTORIC DISTRICT
- CITY LIMITS

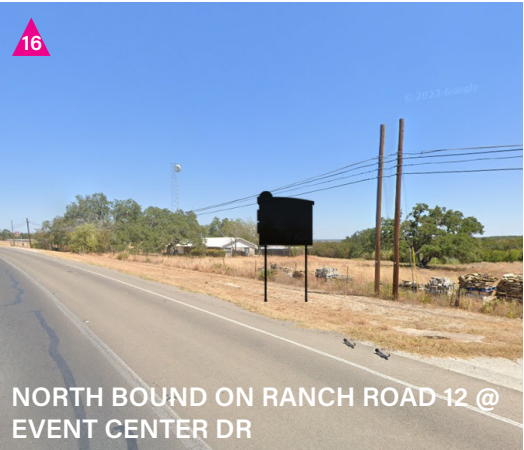
- NOTES:**
1. Contractor to provide demolition, as needed, at all sign locations, and to repair/replace any concrete removed or damaged during construction.
  2. Contractor to coordinate with City and TXDOT to schedule any required traffic controls.
  3. Contractor to provide new footings for all signs.
  4. Contractor to contact 811 prior to installation.
  5. Contractor to field locate and stake all signage for landscape architect and owner approval.
  6. Contractor to provide shop-drawings and mock-ups for all signage prior to construction for landscape architect and owner approval.
  7. Design Development drawings only.

Disclaimer:  
This document represents design progress and its provision, either electronic or hard copy, is to communicate design intent only. Original and published work may not be duplicated, used, or disclosed without the written consent of Studio16:19.



# WAYFINDING SIGN LOCATIONS

## DRIPPING SPRINGS NORTH MAP



- KEY LEGEND:**
- ▲ WAYFINDING SIGNAGE
  - ▲ REPLACEMENT WAYFINDING
  - HISTORIC DISTRICT
  - CITY LIMITS

- NOTES:**
1. Contractor to provide demolition, as needed, at all sign locations, and to repair/replace any concrete removed or damaged during construction.
  2. Contractor to coordinate with City and TXDOT to schedule any required traffic controls.
  3. Contractor to provide new footings for all signs.
  4. Contractor to contact 811 prior to installation.
  5. Contractor to field locate and stake all signage for landscape architect and owner approval.
  6. Contractor to provide shop-drawings and mock-ups for all signage prior to construction for landscape architect and owner approval.
  7. Design Development drawings only.

Disclaimer:  
This document represents design progress and its provision, either electronic or hard copy, is to communicate design intent only. Original and published work may not be duplicated, used, or disclosed without the written consent of Studio16:19.



# WAYFINDING SIGN LOCATIONS

## DRIPPING SPRINGS SOUTH MAP



SOUTH BOUND ON RANCH ROAD 12 @ RANCH ROAD 150



NORTH BOUND ON RANCH ROAD 12 @ RANCH ROAD 150



EAST BOUND ON RANCH ROAD 150 @ CHARRO RANCH PARK

- KEY LEGEND:**
- ▲ WAYFINDING SIGNAGE
  - ▲ REPLACEMENT WAYFINDING
  - HISTORIC DISTRICT
  - CITY LIMITS

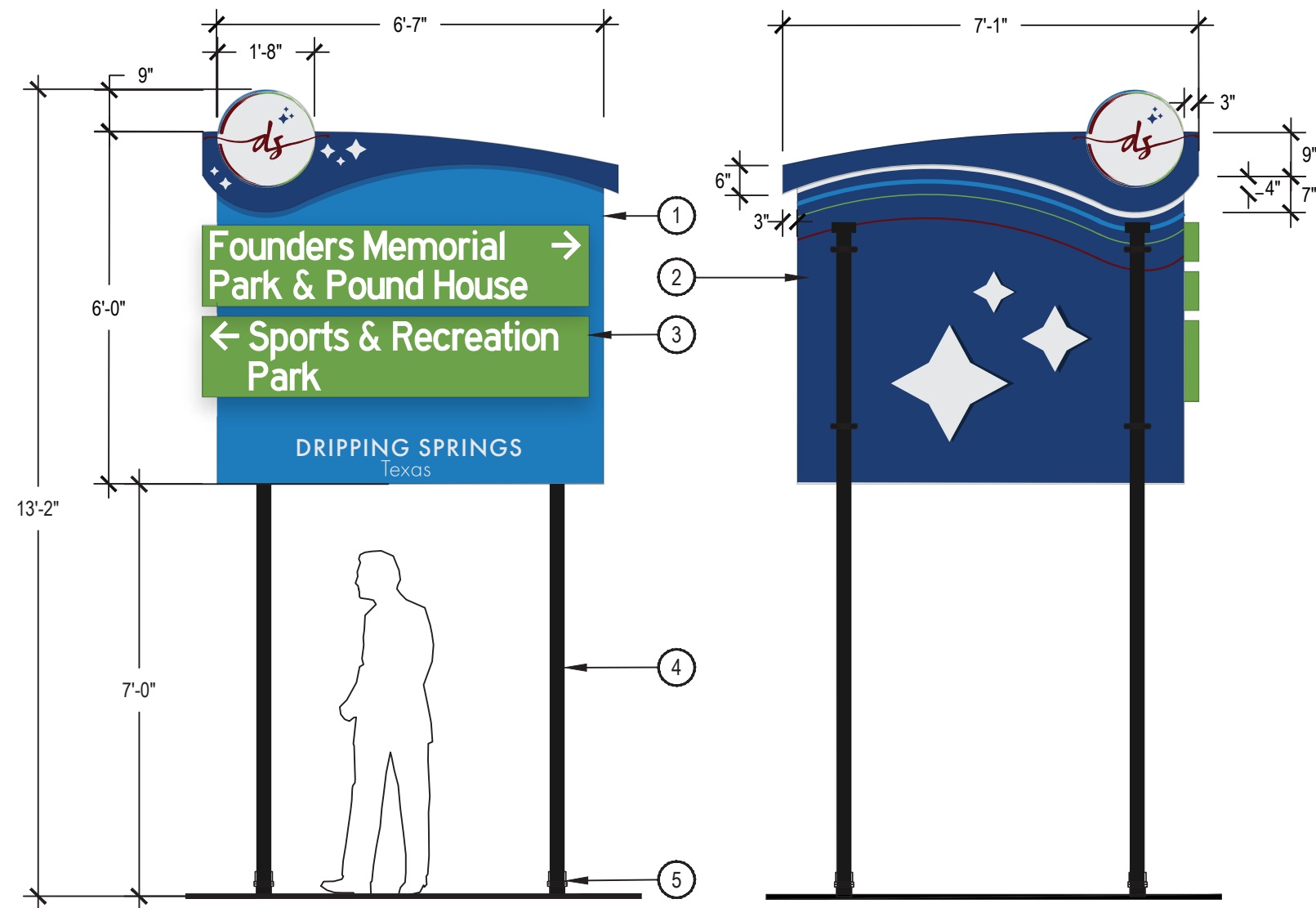
- NOTES:**
1. Contractor to provide demolition, as needed, at all sign locations, and to repair/replace any concrete removed or damaged during construction.
  2. Contractor to coordinate with City and TXDOT to schedule any required traffic controls.
  3. Contractor to provide new footings for all signs.
  4. Contractor to contact 811 prior to installation.
  5. Contractor to field locate and stake all signage for landscape architect and owner approval.
  6. Contractor to provide shop-drawings and mock-ups for all signage prior to construction for landscape architect and owner approval.
  7. Design Development drawings only.

Disclaimer:  
This document represents design progress and its provision, either electronic or hard copy, is to communicate design intent only. Original and published work may not be duplicated, used, or disclosed without the written consent of Studio16:19.



# WAYFINDING SIGNS

## SIGN DETAILS & NOTES



- ① (1 EA) 0.125 MM ALUMINUM PANEL, DESIGN TO BE PRINTED VINYL APPLIED TO PANEL; SIGN FACE TO BE RETROREFLECTIVE: 3M™ HIGH INTENSITY PRISMATIC REFLECTIVE SHEETING SERIES 3930 PER TXDOT STANDARDS & GUIDELINES (DMS-8300)
- ② BACK OF ALUMINUM PANEL DESIGN TO BE PRINTED VINYL APPLIED TO PANEL; DESIGN AS INDICATED IN DRAWINGS
- ③ 0.125 MM ALUMINUM PANEL MOUNTED TO SIGN FACE, HEIGHT & QUANTITY VARIES, REF. DESTINATIONS DETAILS; DESIGN TO BE PRINTED VINYL APPLIED TO PANEL; SIGN FACE TO BE RETROREFLECTIVE: 3M™ HIGH INTENSITY PRISMATIC REFLECTIVE SHEETING SERIES 3930 PER TXDOT STANDARDS & GUIDELINES (DMS-8300)
- ④ 2 7/8" O.D. SCHEDULE 80 ALUMINUM ALLOY POLE, PAINTED BLACK, PER TXDOT STANDARD SMD (GEN)-08 AND SMD(SLIP-1)-08 - SMD(SLIP-03)-08; SIGN SUPPORT CODE: SM RD SGN ASSM TY S80 (2) SA (P)
- ⑤ TXDOT SLIP BASE ON CONCRETE FOOTING, PER TXDOT STANDARD SMD(SLIP-1)-08 - SMD(SLIP-3)-08

### NOTES:

1. WHERE SIGNS ARE INSTALLED IN OPEN DITCH SECTION, 7'-0" CLEARANCE MUST BE MAINTAINED FROM EDGE OF TRAVEL LANE TO BOTTOM OF SIGN. REFERENCE TXDOT STANDARD SMD (GEN)-08.
2. CONTRACTOR TO PROVIDE DETAILED SHOP DRAWINGS AND MOCK-UPS FOR APPROVAL BY LANDSCAPE ARCHITECT AND OWNER PRIOR TO CONSTRUCTION.
3. CONTRACTOR TO PROVIDE RETROREFLECTIVITY SAMPLE AND SPECIFICATIONS FOR LANDSCAPE ARCHITECT AND TXDOT APPROVAL PRIOR TO CONSTRUCTION.
4. CONTRACTOR TO CONTACT TEXAS 811 PRIOR TO CONSTRUCTION TO CONFIRM SIGN LOCATIONS.
5. CONTRACTOR TO COORDINATE WITH LANDSCAPE ARCHITECT FOR SIGNAGE ARTWORK.
6. CONTRACTOR TO ENSURE THAT LETTERING AND DIRECTIONAL SYMBOLS ARE NOT OBSTRUCTED FROM MOUNTING HARDWARE.

### FONTS:

Highway Gothic -

6" per TXDOT; 90% Condensed

ABCDEFGHIJKLMNOPQRSTUVWXYZ

abcdefghijklmnopqrstuvwxyz

Futura PT - Medium 4"

ABCDEFGHIJKLMNOPQRSTUVWXYZ

abcdefghijklmnopqrstuvwxyz


### NOTES:


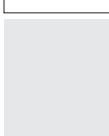
1. Contractor to provide demolition, as needed, at all sign locations, and to repair/replace any concrete removed or damaged during construction.
2. Contractor to coordinate with City and TXDOT to schedule any required traffic controls.
3. Contractor to provide new footings for all signs.
4. Contractor to contact 811 prior to installation.
5. Contractor to field locate and stake all signage for landscape architect and owner approval.
6. Contractor to provide shop-drawings and mock-ups for all signage prior to construction for landscape architect and owner approval.
7. Design Development drawings only.


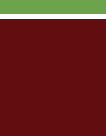
## 1 WAYFINDING SIGNAGE CONCEPT - TXDOT

SCALE: 3/8" = 1'-0"

**COLOR SCHEME:** Sign face to be retroreflective: 3M™ high intensity prismatic reflective sheeting series 3930. Including lettering and directional arrows.

	<b>SIGN MAIN</b> RGB 25 / 123 / 189 Web # 197bbd Pantone
	<b>SIGN MAIN</b> RGB 32 / 59 / 113 Web #203b71 Pantone

	<b>TEXT</b> Retroreflective White per TXDOT DMS-8300
	<b>SIGN ACCENT</b> RGB 230 / 231 / 232 Web #e6e7e8 Pantone

	<b>SIGN ACCENT</b> RGB 109 / 163 / 77 Web #6da34d Pantone
	<b>SIGN ACCENT</b> RGB 98 / 14 / 16 Web #620e10 Pantone

### SYMBOLS:

Directional Arrows - 6"



City Seal

Stars

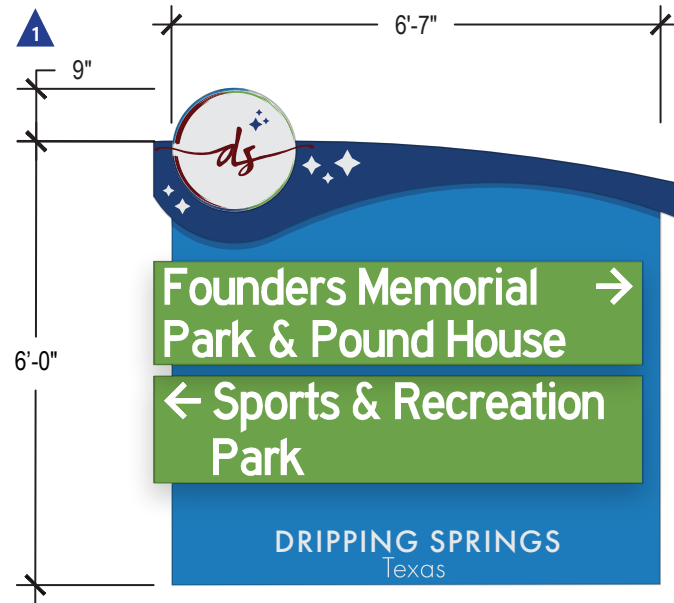


Disclaimer:  
This document represents design progress and its provision, either electronic or hard copy, is to communicate design intent only. Original and published work may not be duplicated, used, or disclosed without the written consent of Studio16:19.

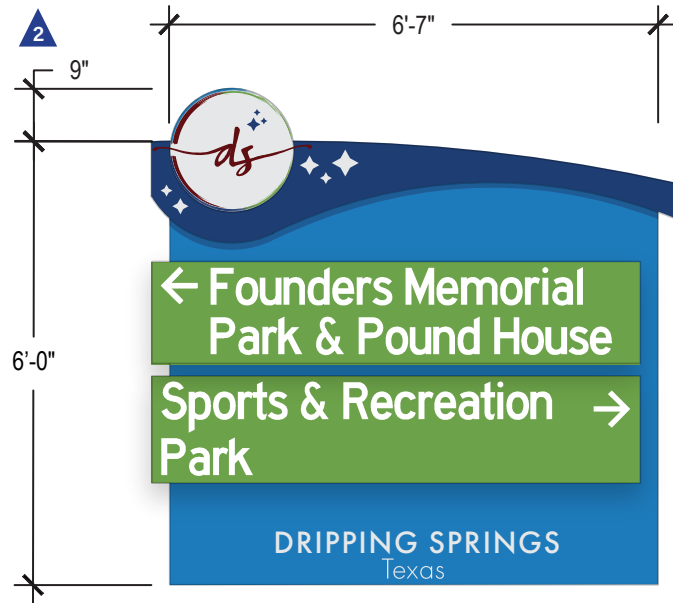


# WAYFINDING SIGNS

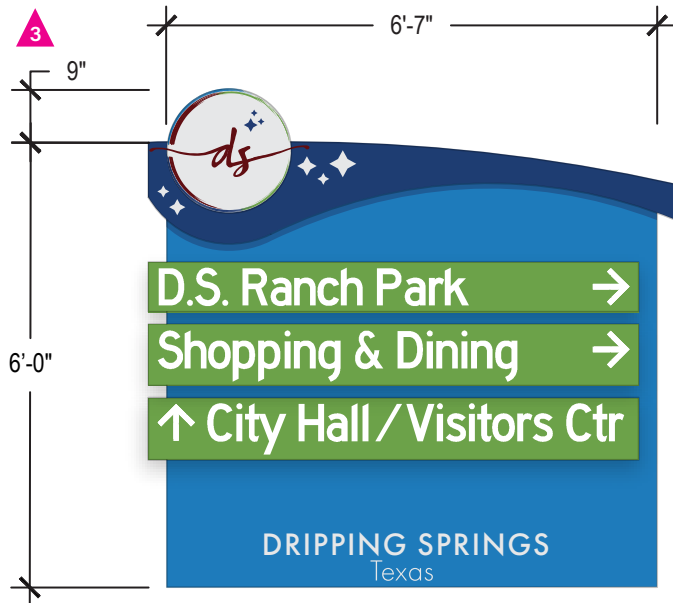
## WAYFINDING DESTINATIONS MOCKUP



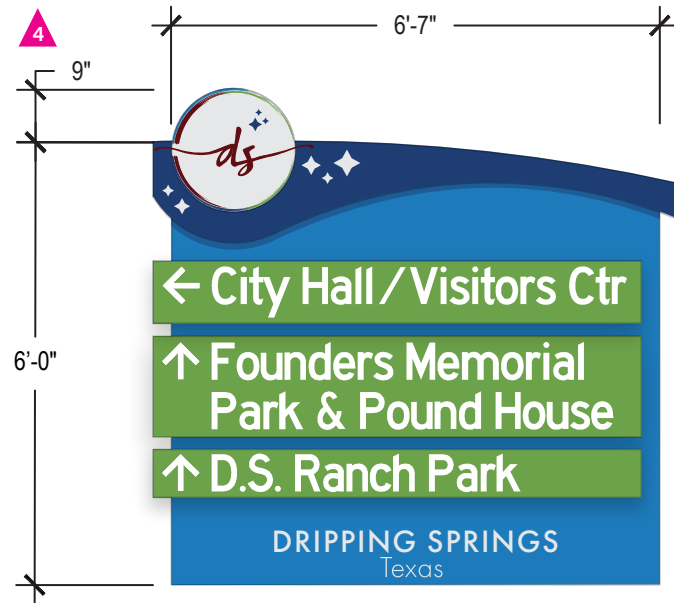
WEST BOUND ON U.S. HWY 290 @ ROB SHELTON LN



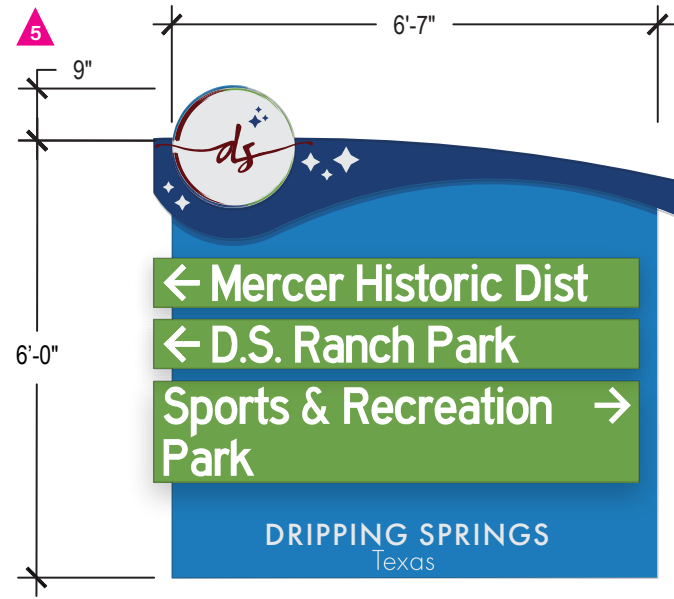
EAST BOUND ON U.S. HWY 290 @ ROB SHELTON LN



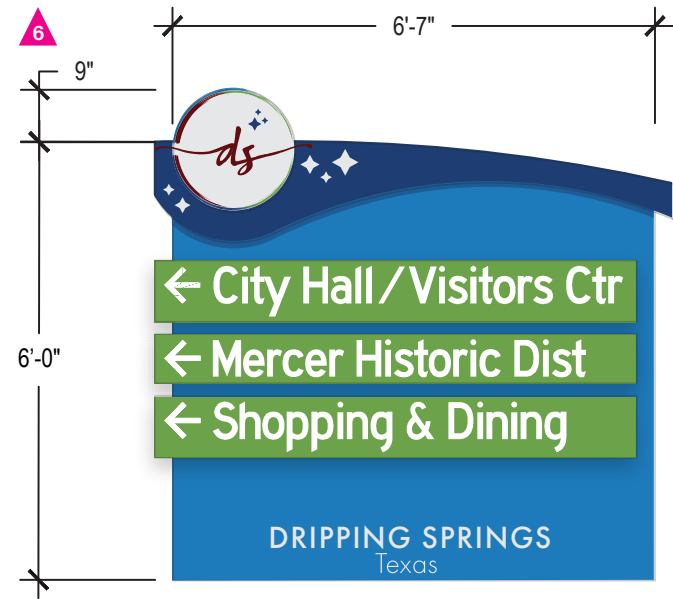
WEST BOUND ON U.S. HWY 290 @ RANCH ROAD 12



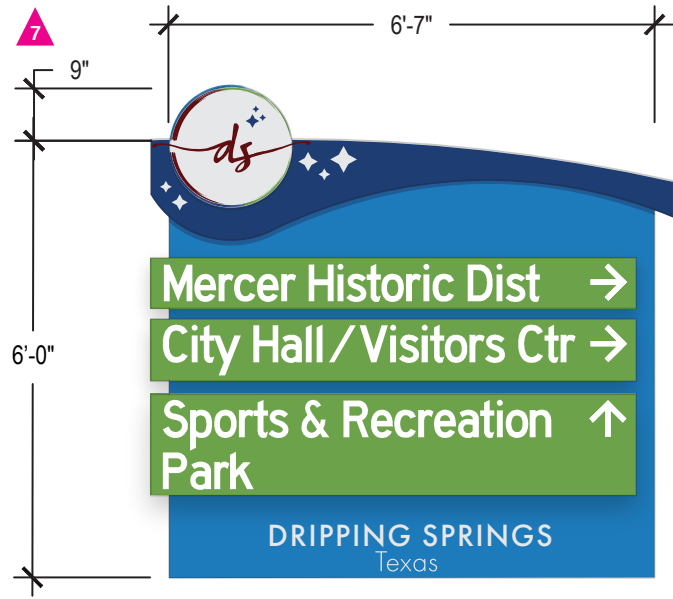
NORTH BOUND ON RANCH ROAD 12 @ U.S. HWY 290



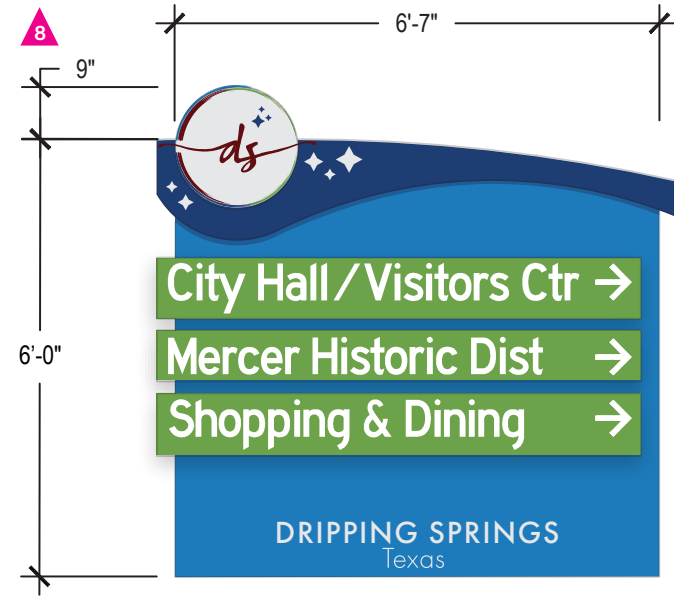
EAST BOUND ON U.S. HWY 290 @ RANCH ROAD 12



NORTH BOUND ON RANCH ROAD 12 @ MERCER ST



SOUTH BOUND ON RANCH ROAD 12 @ MERCER ST



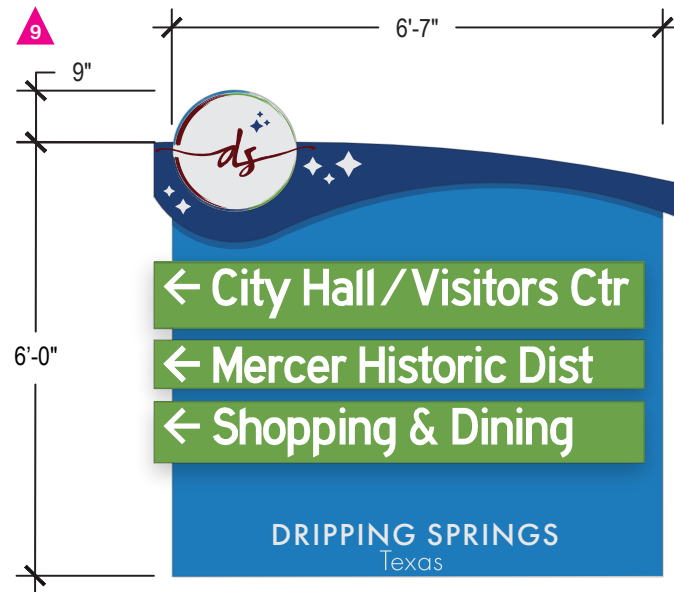
WEST BOUND ON U.S. HWY 290 @ MERCER ST

Disclaimer:  
This document represents design progress and its provision, either electronic or hard copy, is to communicate design intent only. Original and published work may not be duplicated, used, or disclosed without the written consent of Studio16:19.

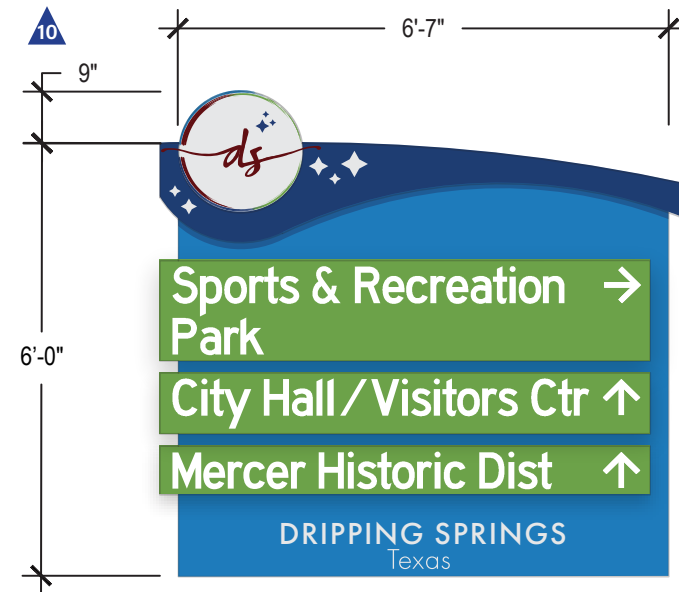


# WAYFINDING SIGNS

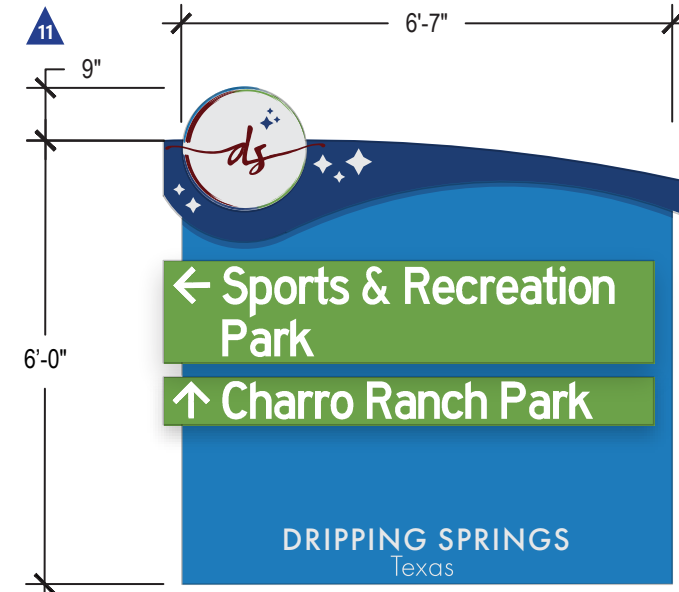
## WAYFINDING DESTINATIONS MOCKUP



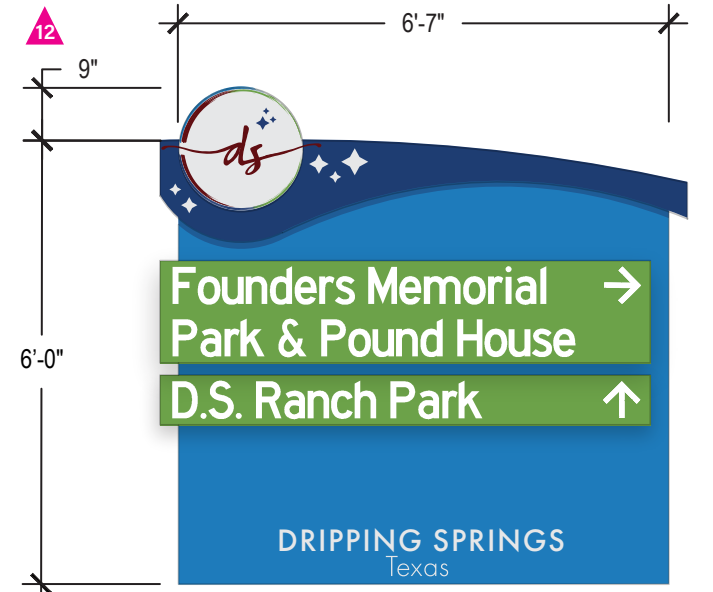
EAST BOUND ON U.S. HWY 290 @  
MERCER ST



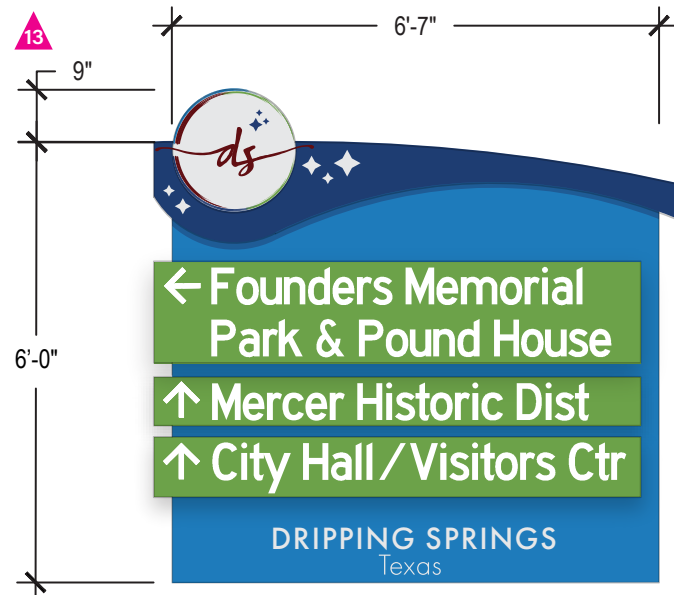
NORTH BOUND ON RANCH ROAD 12 @  
SPORTS PARK RD



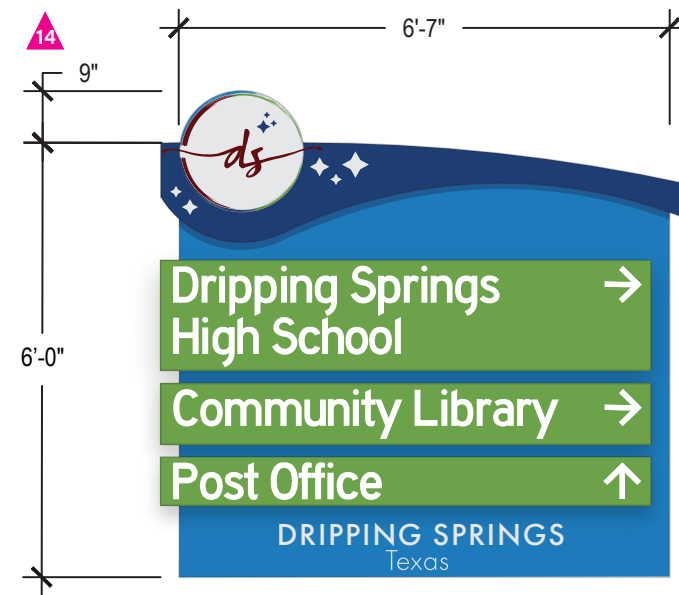
SOUTH BOUND ON RANCH ROAD 12 @  
SPORTS PARK RD



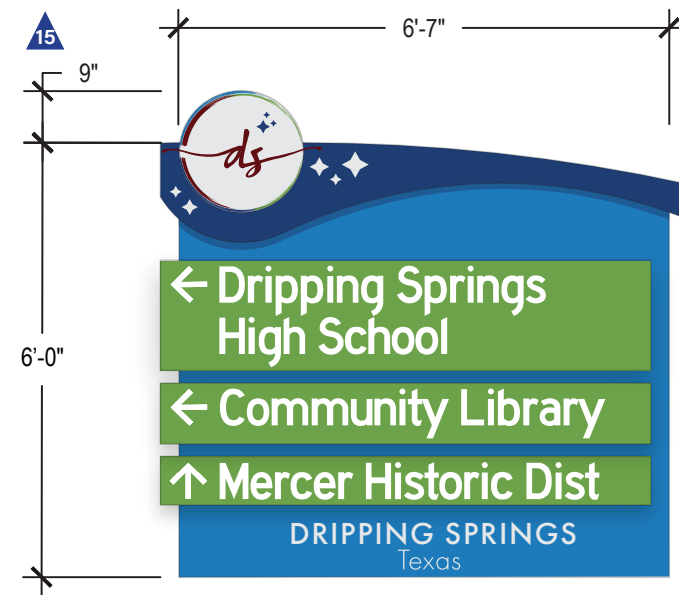
NORTH BOUND ON RANCH ROAD 12 @  
FOUNDERS PARK RD



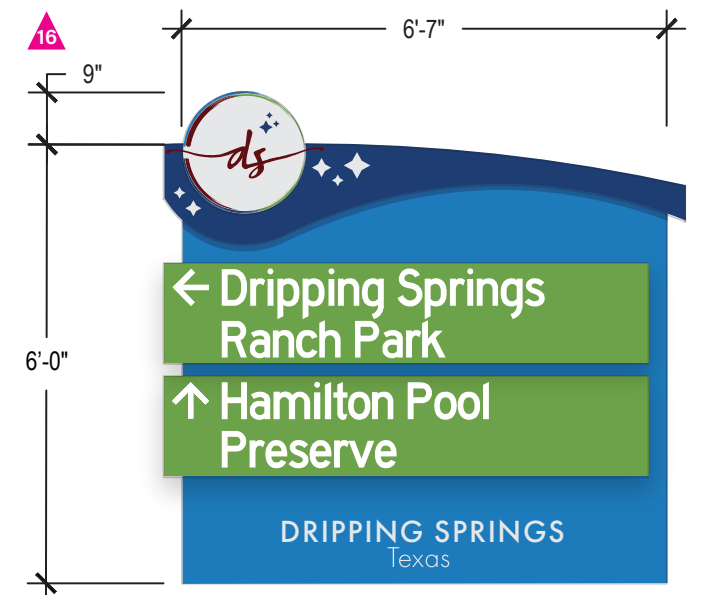
SOUTH BOUND ON RANCH ROAD 12 @  
FOUNDERS PARK RD



WEST BOUND ON U.S. HWY 290 @  
MIGHTY TIGER TRL



EAST BOUND ON U.S. HWY 290 @  
MIGHTY TIGER TRL



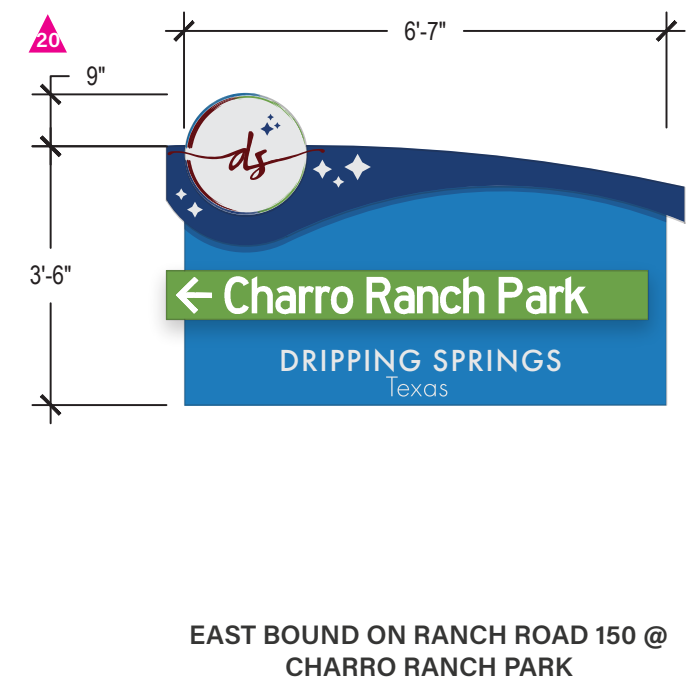
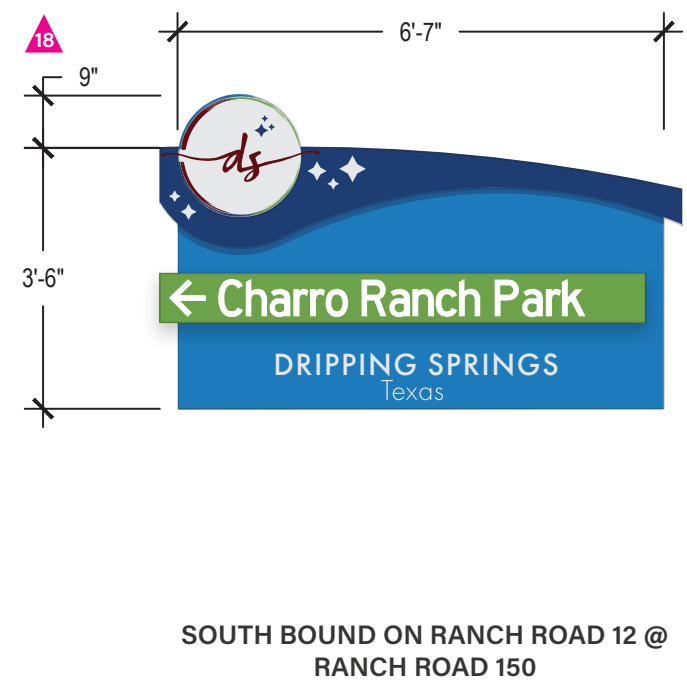
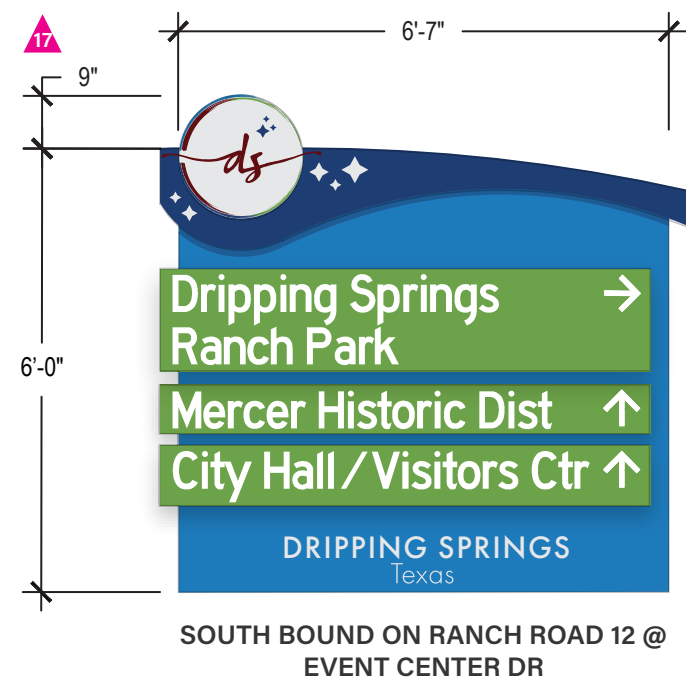
NORTH BOUND ON RANCH ROAD 12 @  
EVENT CENTER DR

Disclaimer:  
This document represents design progress and its provision, either electronic or hard copy, is to communicate design intent only. Original and published work may not be duplicated, used, or disclosed without the written consent of Studio16:19.



# WAYFINDING SIGNS

## WAYFINDING DESTINATIONS MOCKUP



Disclaimer:  
This document represents design progress and its provision, either electronic or hard copy, is to communicate design intent only. Original and published work may not be duplicated, used, or disclosed without the written consent of Studio16:19.



# WAYFINDING SIGNS

## WAYFINDING MOCKUP



Disclaimer:  
This document represents design progress and its provision, either electronic or hard copy, is to communicate design intent only. Original and published work may not be duplicated, used, or disclosed without the written consent of Studio16:19.



WAYFINDING SIGNS

TXDOT DETAILS: SMD (GEN) - 08

DISCLAIMER: The use of this standard is governed by the "Texas Engineering Practice Act". No warranty of any kind is made by TXDOT for any purpose whatsoever. TXDOT assumes no responsibility for the conversion of this standard to other formats or for incorrect results or damages resulting from its use.

**SIGN SUPPORT DESCRIPTIVE CODES**  
(Descriptive Codes correspond to project estimate and quantities sheets)

**SM RD SGN ASSM TY**    **XXXXX(X)XX(X-XXXX)**

**Post Type**  
FRP = Fiberglass Reinforced Plastic Pipe (see SMD(FRP))  
TWT = Thin-Walled Tubing (see SMD(TWT))  
10BWG = 10 BWG Tubing (see SMD(SLIP-1) to (SLIP-3))  
S80 = Schedule 80 Pipe (see SMD(SLIP-1) to (SLIP-3))

**Number of Posts (1 or 2)**

**Anchor Type**  
UA = Universal Anchor - Concreted (see SMD(FRP) and (TWT))  
UB = Universal Anchor - Bolted down (see SMD(FRP) and (TWT))  
WS = Wedge Anchor Steel - (see SMD(TWT))  
WP = Wedge Anchor Plastic (see SMD(TWT))  
SA = Slipbase - Concreted (see SMD(SLIP-1) to (SLIP-3))  
SB = Slipbase - Bolted Down (see SMD(SLIP-1) to (SLIP-3))

**Sign Mounting Designation**  
P = Prefab, "Plain" (see SMD(SLIP-1) to (SLIP-3), (TWT), (FRP))  
T = Prefab, "T" (see SMD(SLIP-1) to (SLIP-3), (TWT))  
U = Prefab, "U" (see SMD(SLIP-1) to (SLIP-3))  
IF REQUIRED  
TEXT or 2EXT = Number of Extensions (see SMD(SLIP-1) to (SLIP-3), (TWT))  
EM = Extruded Wind Beam (see SMD(SLIP-1) to (SLIP-3))  
WC = 1.12 #/ft Wing Channel (see SMD(SLIP-1) to (SLIP-3))  
EXAL = Extruded Aluminum Sign Panels (see SMD(SLIP-3))

**REQUIRED CLEARANCE FOR BREAKAWAY SUPPORT**

Non-breakaway portion of support (i.e., stub).  
4" max.  
60"

To avoid vehicle undercarriage snagging, any substantial remains of a breakaway support, when it is broken away, should not project more than 4 inches above a 60-inch chord (i.e., typical space between wheel paths).

**SIGN LOCATION**

**PAVED SHOULDERS**

**LESS THAN 6 FT. WIDE**  
When the shoulder is 6 ft. or less in width, the sign must be placed at least 12 ft. from the edge of the travel lane.

**GREATER THAN 6 FT. WIDE**  
When the shoulder is greater than 6 ft. in width, the sign must be placed at least 6 ft. from the edge of the shoulder.

**T-INTERSECTION**

When this sign is needed at the end of a two-lane, two way roadway, the right edge of the sign should be in line with the centerline of the roadway. Place as close to ROW as practical.

No more than 2 sign posts should be located within a 7 ft. circle.

Acceptable  
7 ft. diameter circle  
Not Acceptable  
7 ft. diameter circle  
Not Acceptable  
7 ft. diameter circle  
Not Acceptable

**BEHIND BARRIER**

**BEHIND GUARDRAIL**  
\*\*Sign clearance based on distance required for proper guard rail or concrete barrier performance.

**BEHIND CONCRETE BARRIER**

**TYPICAL SIGN ATTACHMENT DETAIL**

**Single Signs**  
U-bolt  
Sign Post  
Sign Clamp  
Nylon washer, flat washer, lock washer, nut  
Nut, lock washer  
Sign Panel

**Back-to-Back Signs**  
Sign Panel  
Nylon washer, flat washer, lock washer, nut  
Sign Clamp  
Sign Post  
Clamp Bolt  
Nylon washer, flat washer, lock washer, nut  
Sign Bolt  
Sign Panel

Bolts used to mount sign panels to the clamp are 5/16-18 UNC galvanized square head with nut, nylon washer, flat washer and lock washer. The bolt length is 1 inch for aluminum.

When two sign clamps are used to mount signs back-to-back, use a 5/16-18 UNC galvanized hex head per ASTM A307 with nut and helical-spring lock washer. The approximate bolt lengths for various post sizes and sign clamp types are given in the table at right. The bolt length may need to be adjusted depending upon field conditions.

Sign clamps may be either the specific size clamp or the universal clamp.

Pipe Diameter	Approximate Bolt Length	
	Specific Clamp	Universal Clamp
2" nominal	3"	3 or 3 1/2"
2 1/2" nominal	3 or 3 1/2"	3 1/2 or 4"
3" nominal	3 1/2 or 4"	4 1/2"

**SIGNS WITH PLAQUES**

When a supplemental plaque or secondary sign is used, the 7 ft sign height is measured to the bottom of the supplemental plaque or secondary sign.

**CURB & GUTTER OR RAISED ISLAND**

**RESTRICTED RIGHT-OF-WAY (When 6 ft min. is not possible.)**

\* Signs shall be mounted using the following condition that results in the greatest sign elevation:

(1) a minimum of 7 to a maximum of 7.5 feet above the edge of the travel lane or

(2) a minimum of 7 to a maximum of 7.5 feet above the grade at the base of the support when sign is installed on the backslope.

The maximum values may be increased when directed by the Engineer.

See the Traffic Operations Division website for detailed drawings of sign clamps, Triangular Slipbase System components and Wedge Anchor System components.

The website address is:  
<http://www.txdot.gov/publications/traffic.htm>

**Texas Department of Transportation**  
Traffic Operations Division

**SIGN MOUNTING DETAILS  
SMALL ROADSIDE SIGNS  
GENERAL NOTES & DETAILS  
SMD (GEN) -08**

© TXDOT July 2002		DN: TXDOT	CK: TXDOT	DN: TXDOT	CK: TXDOT
9-08	REVISIONS	CONT	SECT	JOB	HIGHWAY
		DIST	COUNTY		SHEET NO.

- NOTES:**
1. Contractor to provide demolition, as needed, at all sign locations, and to repair/replace any concrete removed or damaged during construction.
  2. Contractor to coordinate with City and TXDOT to schedule any required traffic controls.
  3. Contractor to provide new footings for all signs.
  4. Contractor to contact 811 prior to installation.
  5. Contractor to field locate and stake all signage for landscape architect and owner approval.
  6. Contractor to provide shop-drawings and mock-ups for all signage prior to construction for landscape architect and owner approval.
  7. Design Development drawings only.

Disclaimer:  
This document represents design progress and its provision, either electronic or hard copy, is to communicate design intent only. Original and published work may not be duplicated, used, or disclosed without the written consent of Studio16:19.



WAYFINDING SIGNS

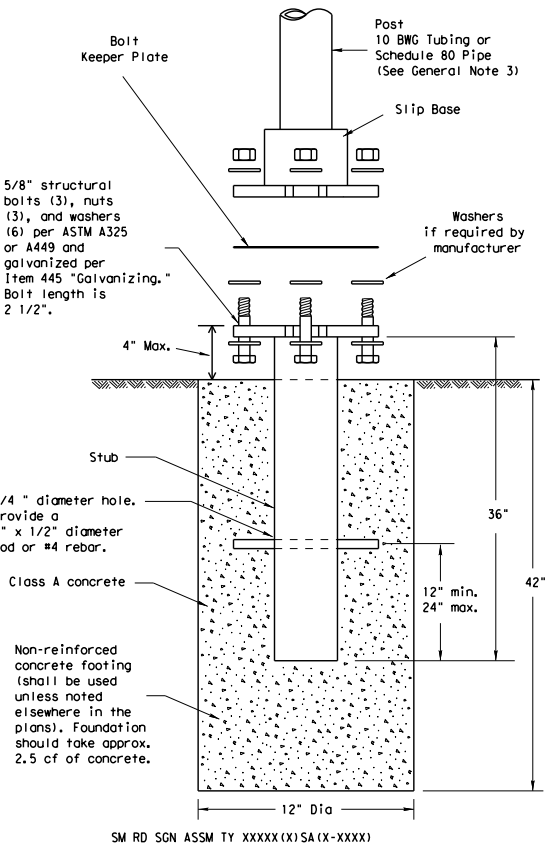
TXDOT DETAILS: SMD (SLIP-01) - 08

DISCLAIMER: The use of this standard is governed by the "Texas Engineering Practice Act". No warranty of any kind is made by TxDOT for any purpose whatsoever. TxDOT assumes no responsibility for any damage resulting from its use.

DATE: \_\_\_\_\_

FILE: \_\_\_\_\_

TRIANGULAR SLIPBASE INSTALLATION GENERAL REQUIREMENTS

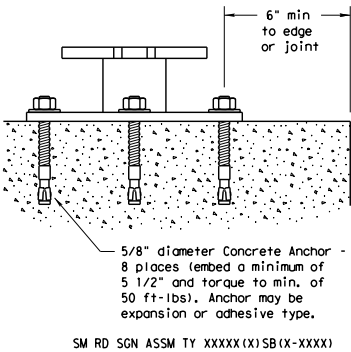


**NOTE**

There are various devices approved for the Triangular Slipbase System. Please reference the Material Producer List for approved slip base systems. [http://www.txdot.gov/business/producer\\_list.htm](http://www.txdot.gov/business/producer_list.htm) The devices shall be installed per manufacturers' recommendations. Installation procedures shall be provided to the Engineer by Contractor.

- GENERAL NOTES:**
- Slip base shall be permanently marked to indicate manufacturer. Method, design, and location of marking are subject to approval of the TxDOT Traffic Standards Engineer.
  - Material used as post with this system shall conform to the following specifications:  
10 BWG Tubing (2.875" outside diameter)  
0.134" nominal wall thickness  
Seamless or electric-resistance welded steel tubing or pipe  
Steel shall be HSLAS Gr 55 per ASTM A1011 or ASTM A1008  
Other steels may be used if they meet the following:  
55,000 PSI minimum yield strength  
70,000 PSI minimum tensile strength  
20% minimum elongation in 2"  
Wall thickness (uncoated) shall be within the range of 0.122" to 0.138"  
Outside diameter (uncoated) shall be within the range of 2.867" to 2.883"  
Galvanization per ASTM A123 or ASTM A653 G210. For pre-coated steel tubing (ASTM A653), recoat tube outside diameter weld seam by metallizing with zinc wire per ASTM B833.  
Schedule 80 Pipe (2.875" outside diameter)  
0.276" nominal wall thickness  
Steel tubing per ASTM A500 Gr C  
Other seamless or electric-resistance welded steel tubing or pipe with equivalent outside diameter and wall thickness may be used if they meet the following:  
46,000 PSI minimum yield strength  
62,000 PSI minimum tensile strength  
21% minimum elongation in 2"  
Wall thickness (uncoated) shall be within the range of 0.248" to 0.304"  
Outside diameter (uncoated) shall be within the range of 2.855" to 2.895"  
Galvanization per ASTM A123
  - See the Traffic Operations Division website for detailed drawings of sign clamps and Texas Universal Triangular Slipbase System components. The website address is: <http://www.txdot.gov/publications/traffic.htm>
  - Sign supports shall not be spliced except where shown. Sign support posts shall not be spliced.
- ASSEMBLY PROCEDURE**
- Foundation**
- Prepare 12-inch diameter by 42-inch deep hole. If solid rock is encountered, the depth of the foundation may be reduced such that it is embedded a minimum of 18 inches into the solid rock.
  - The Engineer may permit batches of concrete less than 2 cubic yards to be mixed with a portable, motor-driven concrete mixer. For small placements less than 0.5 cubic yards, hand mixing in a suitable container may be allowed by Engineer. Concrete shall be Class A.
  - Push the pipe end of the slip base stub into the center of the concrete. Rotate the stub back and forth while pushing it down into the concrete to assure good contact between the concrete and stub. Continue to work the stub into the concrete until it is between 2 to 4 inches above the ground.
  - Plumb the stub. Allow a minimum of 4 days to set, unless otherwise directed by the Engineer.
  - The triangular slipbase system is multidirectional and is designed to release when struck from any direction.
- Support**
- Cut support so that the bottom of the sign will be 7 to 7.5 feet above the edge of the travelway (i.e., edge of the closest lane) when slip plate is below the edge of pavement or 7 to 7.5 feet above slip plate when the slip plate is above the edge of the travelway. The cut shall be plumb and straight.
  - Attach sign to support using connections shown. When multiple signs are installed on the same support, ensure the minimum clearance between each sign is maintained. See SMD (SLIP-2) for clearances based on sign types.

CONCRETE ANCHOR



Concrete anchor consists of 5/8" diameter stud bolt with UNC series bolt threads on the upper end. Heavy hex nut per ASTM A563, and hardened washer per ASTM F436. The stud bolt shall have a minimum yield and ultimate tensile strength of 50 and 75 KSI, respectively. Nuts, bolts and washers shall be galvanized per Item 445, "Galvanizing." Adhesive type anchors shall have stud bolts installed with Type III epoxy per DMS-6100, "Epoxies and Adhesives." Adhesive anchors may be loaded after adequate epoxy cure time per the manufacturer's recommendations. Top of bolt shall extend at least flush with top of the nut when installed. The anchor, when installed in 4000 psi normal-weight concrete with a 5 1/2" minimum embedment, shall have a minimum allowable tension and shear of 3900 and 3100 psi, respectively.

**SIGN MOUNTING DETAILS**  
**SMALL ROADSIDE SIGNS**  
**TRIANGULAR SLIPBASE SYSTEM**  
**SMD (SLIP-1) - 08**

© TxDOT July 2002	DN: TxDOT	CK: TxDOT	DN: TxDOT	CK: TxDOT
9-08	CONT	SECT	JOB	HIGHWAY
			COUNTY	SHEET NO.

- NOTES:**
- Contractor to provide demolition, as needed, at all sign locations, and to repair/replace any concrete removed or damaged during construction.
  - Contractor to coordinate with City and TxDOT to schedule any required traffic controls.
  - Contractor to provide new footings for all signs.
  - Contractor to contact 811 prior to installation.
  - Contractor to field locate and stake all signage for landscape architect and owner approval.
  - Contractor to provide shop-drawings and mock-ups for all signage prior to construction for landscape architect and owner approval.
  - Design Development drawings only.

Disclaimer:  
This document represents design progress and its provision, either electronic or hard copy, is to communicate design intent only. Original and published work may not be duplicated, used, or disclosed without the written consent of Studio16:19.



WAYFINDING SIGNS

TXDOT DETAILS: SMD (SLIP-02) - 08

DISCLAIMER: The use of this standard is governed by the "Texas Engineering Practice Act". No warranty of any kind is made by TXDOT for any purpose whatsoever. TXDOT assumes no responsibility for the consequences of the use of this standard to other formats or for incorrect results or damages resulting from its use.

DATE: FILE:

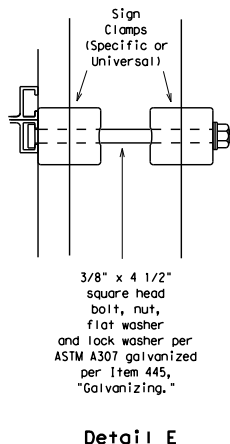
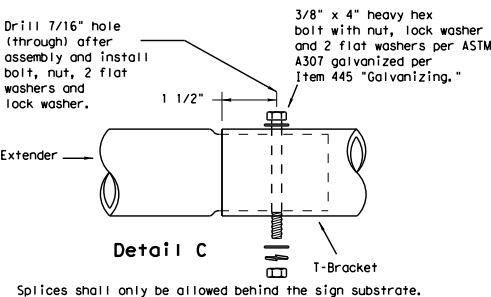
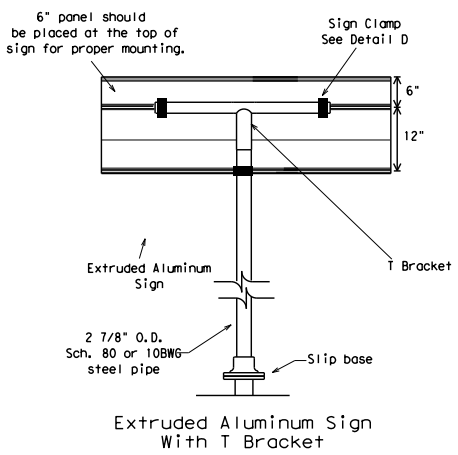
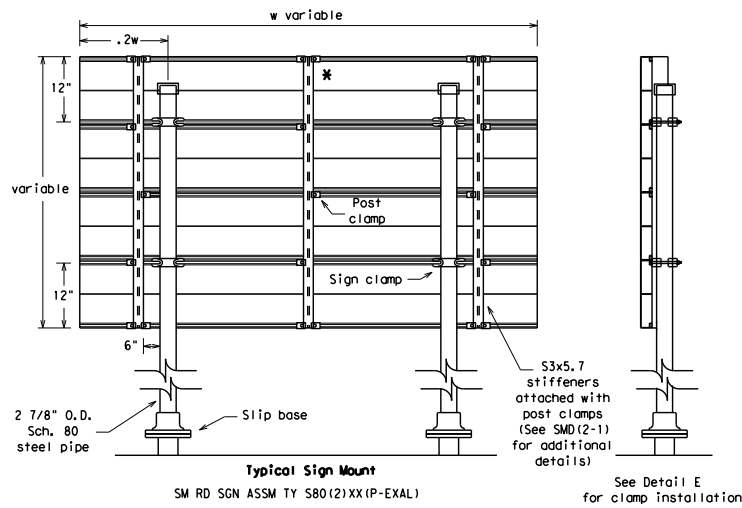
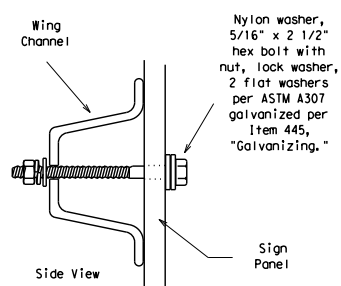
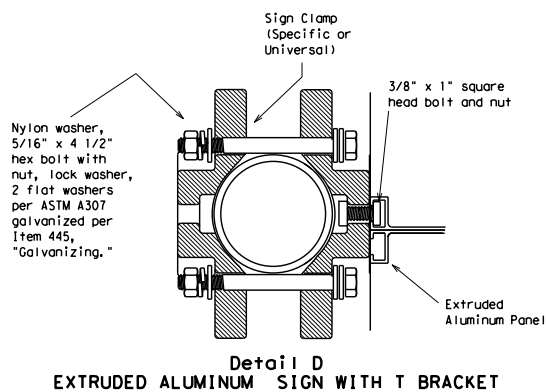
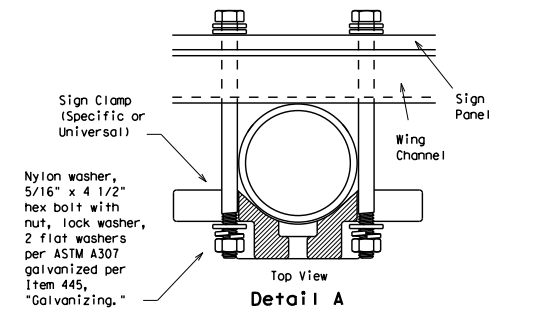
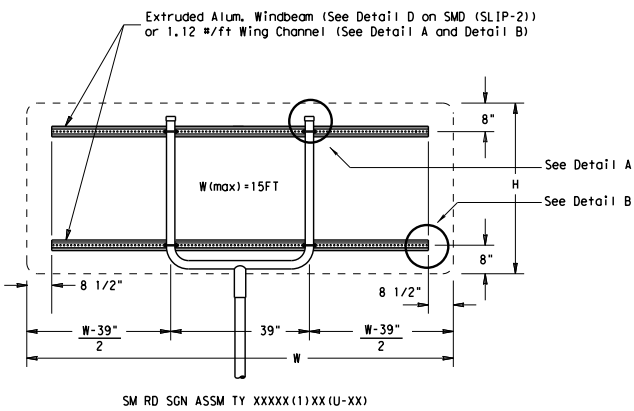
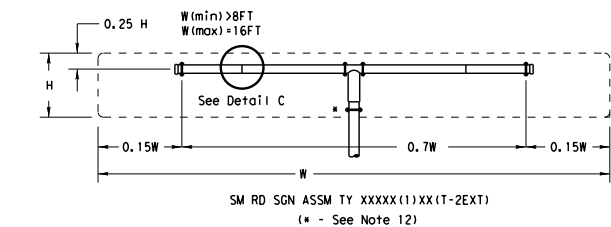


WAYFINDING SIGNS

TXDOT DETAILS: SMD (SLIP-03) - 08

DISCLAIMER: The use of this standard is governed by the "Texas Engineering Practice Act". No warranty of any kind is made by TXDOT for any purpose whatsoever. TXDOT assumes no responsibility for the consequences of any use of this standard to other forms or for incorrect results or damages resulting from its use.

DATE: \_\_\_\_\_ FILE: \_\_\_\_\_



- GENERAL NOTES:**
1. SIGN SUPPORT # OF POSTS MAX. SIGN AREA  
10 BWG 1 16 SF  
10 BWG 2 32 SF  
Sch 80 1 32 SF  
Sch 80 2 64 SF
  2. The Engineer may require that a Schedule 80 post be used in place of a 10 BWG where a sign height is abnormally high due to a fill slope.
  3. Sign supports shall not be spliced except where shown. Sign support posts shall not be spliced.
  4. Aluminum sign blanks shall conform to Departmental Material Specifications DMS-7110 and shall have the following minimum thicknesses: 0.080 for signs less than 7.5 sq. ft., 0.100 for signs 7.5 to 15 sq. ft., and 0.125 for signs greater than 15 sq. ft.
  5. Signs that require specific supports due to reasons in addition to windloading are indicated on the "REQUIRED SUPPORT" table on this sheet.
  6. For horizontal rectangular signs fabricated from flat aluminum, T-brackets are used for signs 24 inches or less in height. U-brackets are used for signs of greater height.
  7. When two triangular slipbase supports are used to support a single sign, they shall not be "rigidly" connected to each other except through the sign panel. This will allow each support to act independently when impacted by an errant vehicle.
  8. Wing channel shall meet ASTM A 1011 SS Gr 50 and be galvanized per ASTM A 123.
  9. Excess pipe, wing channel, or windbeam shall be cut off so that it does not extend beyond the sign panel (i.e., excess support shall not be visible when the sign is viewed from the front.) Repair galvanized coating at cut support ends per Item 445, "Galvanizing."
  10. Sign blanks shall be the sizes and shapes shown on the plans.
  11. Additional sign clamp required on the "T-bracket" post for 24 inch high signs. Place the clamp 3 inches above bottom of sign when possible.
  12. Post open ends shall be fitted with Friction Caps.

	REQUIRED SUPPORT	
	SIGN DESCRIPTION	SUPPORT
Regulatory	48-inch STOP sign (R1-1)	TY 10BWG(1)XX(T) TY 10BWG(1)XX(P-BM)
	60-inch YIELD sign (R1-2)	TY 10BWG(1)XX(T) TY 10BWG(1)XX(P-BM)
	48x16-inch ONE-WAY sign (R6-1)	TY 10BWG(1)XX(T) TY 10BWG(1)XX(P-BM)
	36x48, 48x36, and 48x48-inch signs	TY 10BWG(1)XX(T)
Warning	48x60-inch signs	TY S80(1)XX(T)
	48x48-inch signs (diamond or square)	TY 10BWG(1)XX(T)
	48x60-inch signs	TY S80(1)XX(T)
	48-inch Advance School X-ing sign (S1-1)	TY 10BWG(1)XX(T)
	48-inch School X-ing sign (S2-1)	TY 10BWG(1)XX(T)
	Large Arrow sign (W1-6 & W1-7)	TY 10BWG(1)XX(T)

Texas Department of Transportation  
Traffic Operations Division

**SIGN MOUNTING DETAILS  
SMALL ROADSIDE SIGNS  
TRIANGULAR SLIPBASE SYSTEM**

**SMD (SLIP-3) - 08**

© TXDOT July 2002		DN: TXDOT	CK: TXDOT	DN: TXDOT	CK: TXDOT
9-08	REVISIONS	CONT	SECT	JOB	HIGHWAY
		DIST	COUNTY		SHEET NO.

- NOTES:**
1. Contractor to provide demolition, as needed, at all sign locations, and to repair/replace any concrete removed or damaged during construction.
  2. Contractor to coordinate with City and TXDOT to schedule any required traffic controls.
  3. Contractor to provide new footings for all signs.
  4. Contractor to contact 811 prior to installation.
  5. Contractor to field locate and stake all signage for landscape architect and owner approval.
  6. Contractor to provide shop-drawings and mock-ups for all signage prior to construction for landscape architect and owner approval.
  7. Design Development drawings only.

Disclaimer:  
This document represents design progress and its provision, either electronic or hard copy, is to communicate design intent only. Original and published work may not be duplicated, used, or disclosed without the written consent of Studio16:19.