



116 HARGRAVES DRIVE
 J-1
 AUSTIN, TEXAS 78737

LANDLORD APPROVAL: _____

CLIENT APPROVAL: _____

G:\Shared drives\M\Mighty Fine\#5 BELTERRA VILLAGE - 166 Hargraves Dr, Austin, TX 78737\09-020 SIGN PACKAGE\2 - Design\09-020 NEW SIGN PACKAGE.CDR
 This drawing is the property of Lewis Sign & all rights to its use for reproduction are reserved by Lewis Sign.

LEWIS SIGN
 DESIGN · FABRICATION · INSTALLATION
 ★ 16910 South IH 35, Buda, TX 78610 ★ Office: 512-312-4555 ★ Fax: 512-312-4551 ★ www.LewisSign.com

MIGHTY FINE	CUSTOMER	ACCT. EXEC.	09-020 R2	DWG#	NO.	DATE	BY	DESCRIPTION
116 HARGRAVES DRIVE J-1	LOCATION	B. HALL	1	12/13/21	DW	REVISIONS BASED ON CLIENT INPUT		
AUSTIN, TEXAS 78737	CITY, ST	DESIGNER	1 OF 6	PAGE	2	12/21/21	DW	REVISE SIZE OF SIGN B - CHANGE QUANTITY TO TWO
		D. WALTERSDORFF	09/22/21	ORIG. DATE				

MANDATED BY STATE STATUTE: Anyone selling, installing or servicing electrical signs, outline lighting, lighted awnings, signals, LEDs and existing outdoor electric discharge lighting must maintain an Electric Sign Contractors license. These license holders are regulated by the Texas Department of Licensing and Regulation. For compliance verification or complaints contact TDLR in Austin at 1-800-803-9202, 512-463-6599 or online. This firm's license is **TSCL 18067 & SIGN MASTERS LICENSE 7312**. To verify a company's license, log onto www.license.state.tx.us/licensesearch. Enter the company's name in the "Inquire by Name" field.

A1 A2 CHANNEL LETTERS SCALE: 1/2" = 1'
 FONT: CLIENT SUPPLIED SQ. FT: 83.06



SCOPE OF WORK: FABRICATE AND INSTALL HALO LIT CHANNEL LETTERS ON A BACKER PANEL - WIRE WAY MOUNT

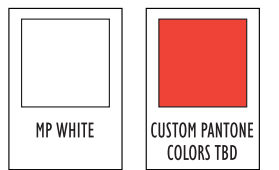
QUANTITY: (2) TWO SETS

CHANNEL LETTERS: HALO LIT CHANNEL LETTERS - .125 ALUMINUM FACES WITH 3" .063 ALUMINUM RETURNS - 3/16" CLEAR BACKS WITH 2" STAND OFFS - PAINT FACES AND RETURNS MP WHITE

ILLUMINATION: 3000K WHITE LED

BACKER: 2" DEEP PAINTED CABINET BACKER PANEL - WELDED ALUMINUM INTERNAL STRUCTURE OVERLAID WITH PAINTED FINISH .125 ALUMINUM - MOUNT BACKER TO A STANDARD 2" x 12" WIRE WAY

MOUNTING: INSTALL SIGN ON BUILDING FASCIA USING FASTENERS APPROPRIATE TO THE SUBSTRATE - SEAL ALL PENETRATIONS WITH CLEAR SILICONE



NIGHT TIME ILLUMINATION

LANDLORD APPROVAL: _____

CLIENT APPROVAL: _____

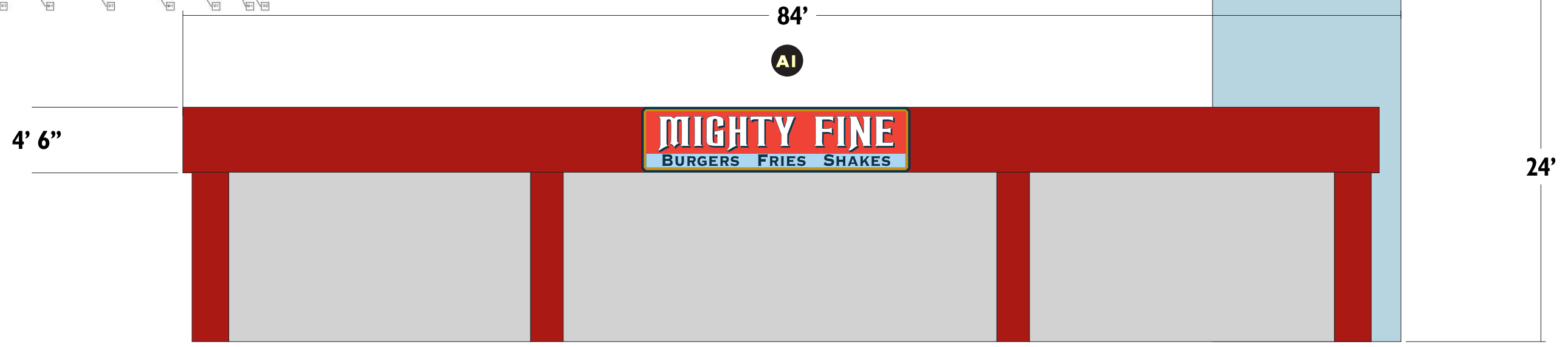
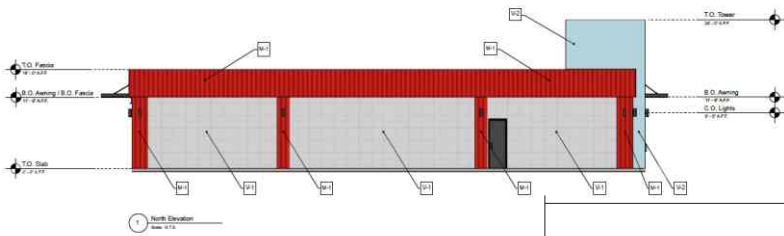
G:\Shared drives\M\Mighty Fine\#5 BELTERRA VILLAGE - 166 Hargraves Dr, Austin, TX 78737\09-020 SIGN PACKAGE\2 - Design\09-020 NEW SIGN PACKAGE.CDR
 This drawing is the property of Lewis Sign & all rights to its use for reproduction are reserved by Lewis Sign.

LEWIS SIGN 40 YEARS
 DESIGN · FABRICATION · INSTALLATION
 ★ 16910 South IH 35, Buda, TX 78610 ★ Office: 512-312-4555 ★ Fax: 512-312-4551 ★ www.LewisSign.com

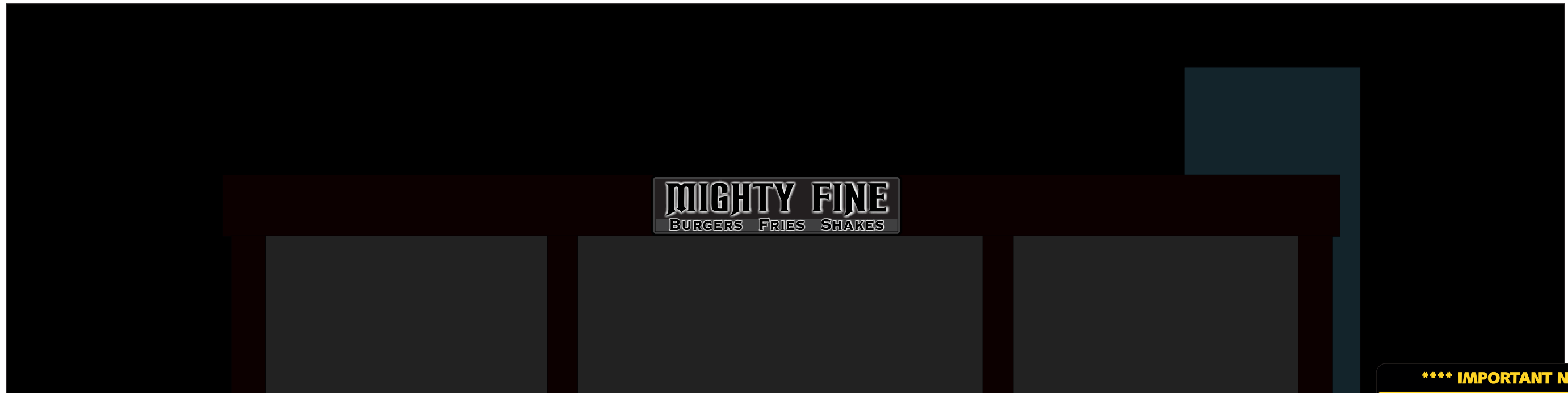
CUSTOMER	MIGHTY FINE	ACCT. EXEC.	B. HALL	09-020 R2	DWG.#	NO.	DATE	BY	DESCRIPTION
LOCATION	116 HARGRAVES DRIVE J-1	DESIGNER	D. WALTERSDORFF	2 OF 6	PAGE	1	12/13/21	DW	REVISIONS BASED ON CLIENT INPUT
CITY, ST	AUSTIN, TEXAS 78737	ORIG. DATE				2	12/21/21	DW	REVISE SIZE OF SIGN B - CHANGE QUANTITY TO TWO

MANDATED BY STATE STATUTE: Anyone selling, installing or servicing electrical signs, outline lighting, lighted awnings, signals, LEDs and existing outdoor electric discharge lighting must maintain an Electric Sign Contractors license. These license holders are regulated by the Texas Department of Licensing and Regulation. For compliance verification or complaints contact TDLR in Austin at 1-800-803-9202, 512-463-6599 or online. This firm's license is **TSCL 18067 & SIGN MASTERS LICENSE 7312**. To verify a company's license, log onto www.license.state.tx.us/licensesearch. Enter the company's name in the "Inquire by Name" field.

SCALE: 1/8" = 1'



NORTH ELEVATION



NIGHT TIME ILLUMINATION VIEW

****** IMPORTANT NOTE ******
 PHOTO RENDERING IS FOR VISUALIZATION ONLY. ACTUAL SIGN(S) MAY BE LARGER OR SMALLER THAN DEPICTED

LANDLORD APPROVAL: _____

CLIENT APPROVAL: _____

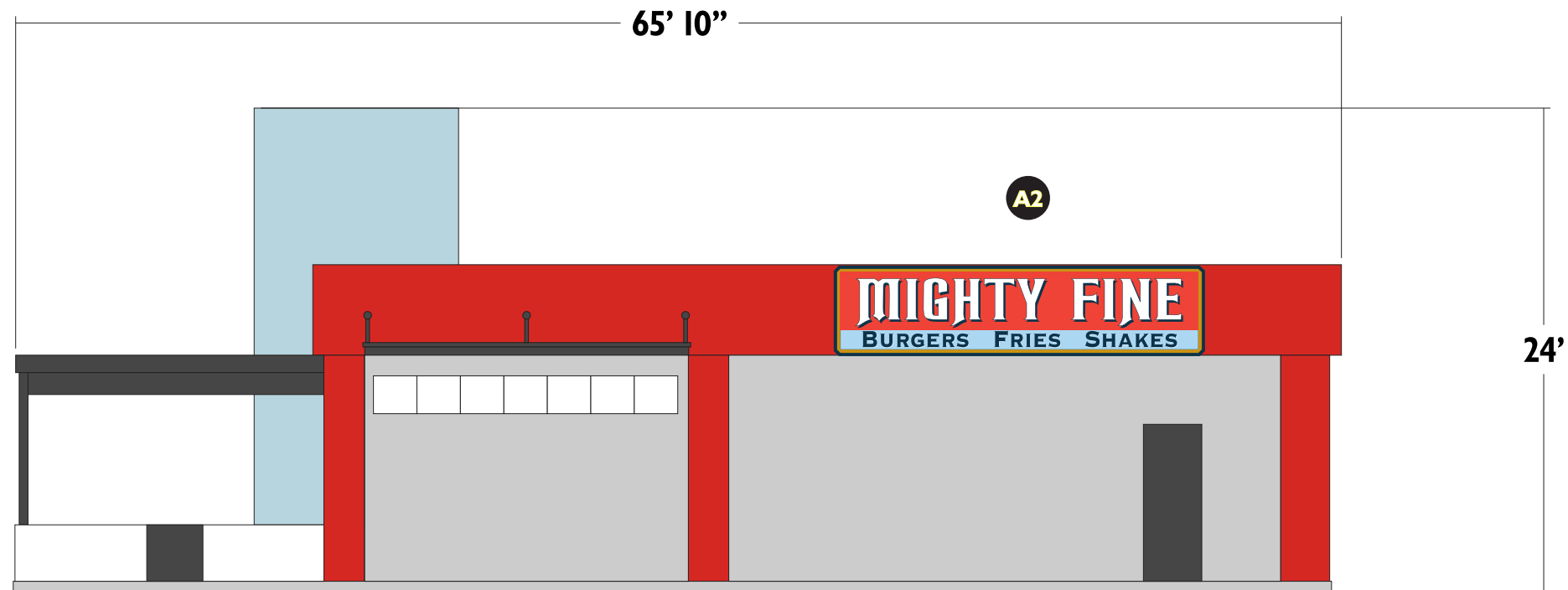
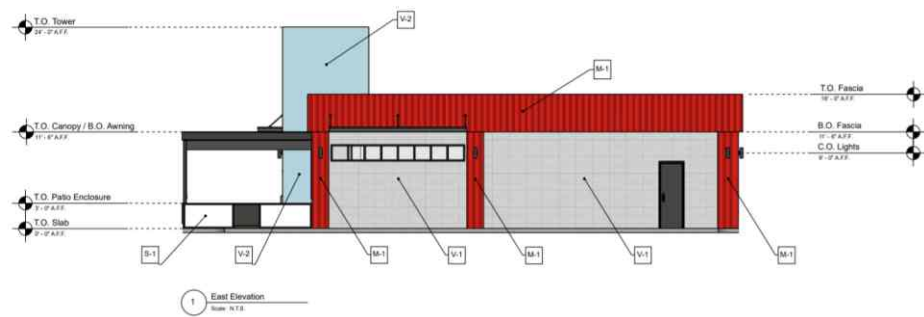
G:\Shared drives\M\Mighty Fine\#5 BELTERRA VILLAGE - 166 Hargraves Dr, Austin, TX 78737\09-020 SIGN PACKAGE\2 - Design\09-020 NEW SIGN PACKAGE.CDR
 This drawing is the property of Lewis Sign & all rights to its use for reproduction are reserved by Lewis Sign.

LEWIS SIGN 40 YEARS
 DESIGN · FABRICATION · INSTALLATION
 ★ 16910 South IH 35, Buda, TX 78610 ★ Office: 512-312-4555 ★ Fax: 512-312-4551 ★ www.LewisSign.com

MIGHTY FINE	CUSTOMER	ACCT. EXEC.	09-020 R2	DWG#	NO.	DATE	BY	DESCRIPTION
116 HARGRAVES DRIVE J-1	LOCATION	B. HALL	3 OF 6	PAGE	1	12/13/21	DW	REVISIONS BASED ON CLIENT INPUT
AUSTIN, TEXAS 78737	CITY, ST	D. WALTERSDORFF	09/22/21	ORIG. DATE	2	12/21/21	DW	REVISE SIZE OF SIGN B - CHANGE QUANTITY TO TWO

MANDATED BY STATE STATUTE: Anyone selling, installing or servicing electrical signs, outline lighting, lighted awnings, signals, LEDs and existing outdoor electric discharge lighting must maintain an Electric Sign Contractors license. These license holders are regulated by the Texas Department of Licensing and Regulation. For compliance verification or complaints contact TDLR in Austin at 1-800-803-9202, 512-463-6599 or online. This firm's license is **TSCL 18067 & SIGN MASTERS LICENSE 7312**. To verify a company's license, log onto www.license.state.tx.us/licensesearch. Enter the company's name in the "Inquire by Name" field.

SCALE: 1/8" = 1'



****** IMPORTANT NOTE ******
 PHOTO RENDERING IS FOR VISUALIZATION ONLY. ACTUAL SIGN(S) MAY BE LARGER OR SMALLER THAN DEPICTED

LANDLORD APPROVAL: _____

CLIENT APPROVAL: _____

G:\Shared drives\M\Mighty Fine\#5 BELTERRA VILLAGE - 166 Hargraves Dr, Austin, TX 78737\09-020 SIGN PACKAGE\2 - Design\09-020 NEW SIGN PACKAGE.CDR
 This drawing is the property of Lewis Sign & all rights to its use for reproduction are reserved by Lewis Sign.

LEWIS SIGN 40 YEARS
 DESIGN • FABRICATION • INSTALLATION
 ★ 16910 South IH 35, Buda, TX 78610 ★ Office: 512-312-4555 ★ Fax: 512-312-4551 ★ www.LewisSign.com

MIGHTY FINE	CUSTOMER	ACCT. EXEC.	09-020 R2	DWG#	NO.	DATE	BY	DESCRIPTION
116 HARGRAVES DRIVE J-1	LOCATION	B. HALL	4 OF 6	PAGE	1	12/13/21	DW	REVISIONS BASED ON CLIENT INPUT
AUSTIN, TEXAS 78737	CITY, ST	D. WALTERSDORFF	09/22/21	ORIG. DATE	2	12/21/21	DW	REVISE SIZE OF SIGN B - CHANGE QUANTITY TO TWO

MANDATED BY STATE STATUTE: Anyone selling, installing or servicing electrical signs, outline lighting, lighted awnings, signals, LEDs and existing outdoor electric discharge lighting must maintain an Electric Sign Contractors license. These license holders are regulated by the Texas Department of Licensing and Regulation. For compliance verification or complaints contact TDLR in Austin at 1-800-803-9202, 512-463-6599 or online. This firm's license is **TSCL 18067 & SIGN MASTERS LICENSE 7312**. To verify a company's license, log onto www.license.state.tx.us/licensesearch. Enter the company's name in the "Inquire by Name" field.



SCOPE OF WORK: FABRICATE AND INSTALL OPEN FACE CHANNEL LETTERS ON A PAINTED BACKER PANEL WITH A WIRE WAY MOUNT

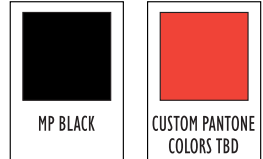
QUANTITY: (2) TWO

CHANNEL LETTERS: OPEN FACE CHANNEL LETTERS WITH EXPOSED NEON - 3" .063 ALUMINUM RETURNS PAINTED MP BLACK

ILLUMINATION: CLEAR NEON PUMPED RED / WHITE NEON

BACKER: 2" DEEP PAINTED CABINET BACKER PANEL - WELDED ALUMINUM INTERNAL STRUCTURE OVERLAID WITH PAINTED FINISH .125 ALUMINUM

MOUNTING: INSTALL SIGN ON BUILDING FASCIA USING FASTENERS APPROPRIATE TO THE SUBSTRATE - SEAL ALL PENETRATIONS WITH CLEAR SILICONE



LANDLORD APPROVAL: _____

CLIENT APPROVAL: _____

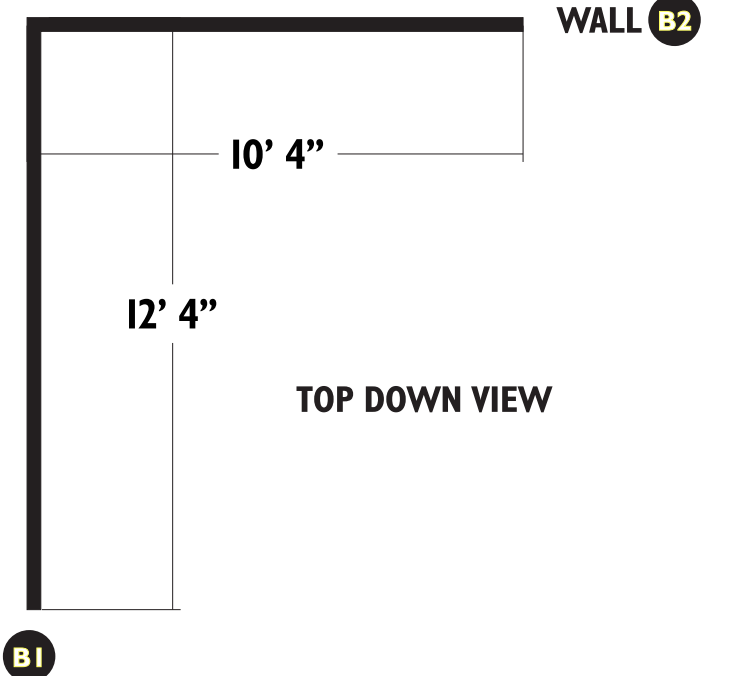
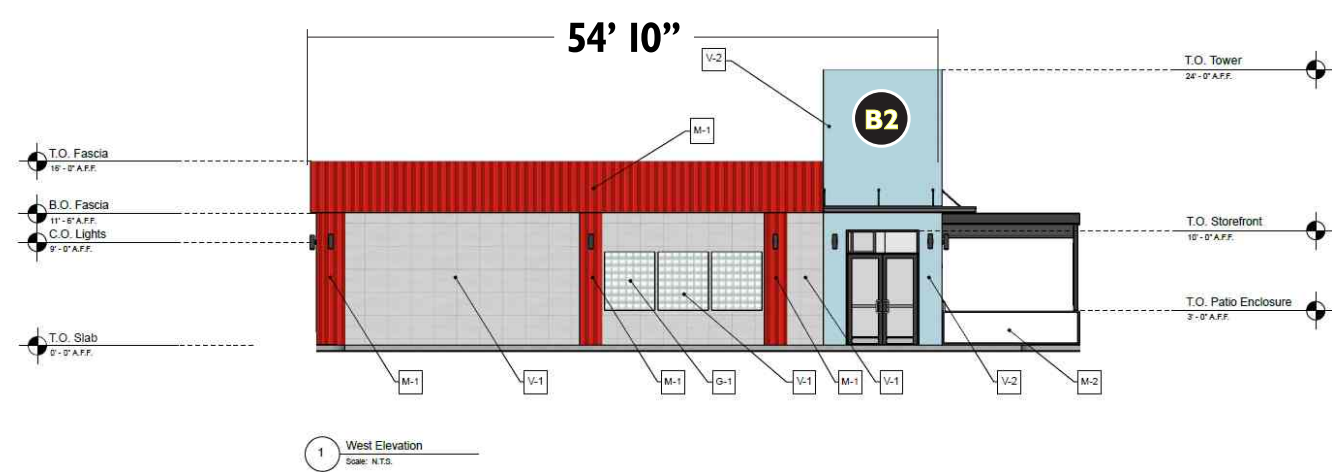
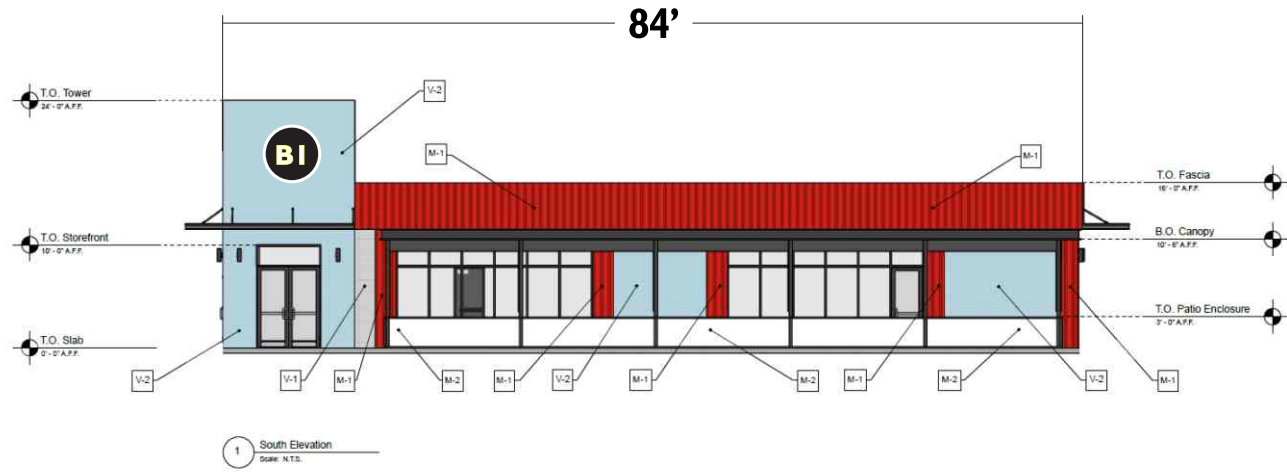
G:\Shared drives\M\Mighty Fine\#5 BELTERRA VILLAGE - 166 Hargraves Dr, Austin, TX 78737\09-020 SIGN PACKAGE\2 - Design\09-020 NEW SIGN PACKAGE.CDR
 This drawing is the property of Lewis Sign & all rights to its use for reproduction are reserved by Lewis Sign.

LEWIS SIGN 40 YEARS
 DESIGN · FABRICATION · INSTALLATION
 ★ 16910 South IH 35, Buda, TX 78610 ★ Office: 512-312-4555 ★ Fax: 512-312-4551 ★ www.LewisSign.com

CUSTOMER	MIGHTY FINE	ACCT. EXEC.	B. HALL	09-020 R2	DWG.#	NO.	DATE	BY	DESCRIPTION
LOCATION	116 HARGRAVES DRIVE J-1	DESIGNER	D. WALTERSDORFF	5 OF 6	PAGE	1	12/13/21	DW	REVISIONS BASED ON CLIENT INPUT
CITY, ST	AUSTIN, TEXAS 78737	ORIG. DATE				2	12/21/21	DW	REVISE SIZE OF SIGN B - CHANGE QUANTITY TO TWO

MANDATED BY STATE STATUTE: Anyone selling, installing or servicing electrical signs, outline lighting, lighted awnings, signals, LEDs and existing outdoor electric discharge lighting must maintain an Electric Sign Contractors license. These license holders are regulated by the Texas Department of Licensing and Regulation. For compliance verification or complaints contact TDLR in Austin at 1-800-803-9202, 512-463-6599 or online. This firm's license is **TSCL 18067 & SIGN MASTERS LICENSE 7312**. To verify a company's license, log onto www.license.state.tx.us/licensesearch. Enter the company's name in the "Inquire by Name" field.

SCALE: 1/4" = 1'



LANDLORD APPROVAL: _____

CLIENT APPROVAL: _____

G:\Shared drives\M\Mighty Fine\#5 BELTERRA VILLAGE - 166 Hargraves Dr, Austin, TX 78737\09-020 SIGN PACKAGE\2 - Design\09-020 NEW SIGN PACKAGE.CDR
This drawing is the property of Lewis Sign & all rights to its use for reproduction are reserved by Lewis Sign.

LEWIS SIGN 40 YEARS
DESIGN · FABRICATION · INSTALLATION
★ 16910 South IH 35, Buda, TX 78610 ★ Office: 512-312-4555 ★ Fax: 512-312-4551 ★ www.LewisSign.com

CUSTOMER	MIGHTY FINE
LOCATION	116 HARGRAVES DRIVE J-1
CITY, ST	AUSTIN, TEXAS 78737
ACCT. EXEC.	B. HALL
DESIGNER	D. WALTERSDORFF

NO.	DATE	BY	DESCRIPTION
1	12/13/21	DW	REVISIONS BASED ON CLIENT INPUT
2	12/21/21	DW	REVISE SIZE OF SIGN B - CHANGE QUANTITY TO TWO
09-020 R2		DWG.#	
6 OF 6		PAGE	
09/22/21		ORIG. DATE	

MANDATED BY STATE STATUTE: Anyone selling, installing or servicing electrical signs, outline lighting, lighted awnings, signals, LEDs and existing outdoor electric discharge lighting must maintain an Electric Sign Contractors license. These license holders are regulated by the Texas Department of Licensing and Regulation. For compliance verification or complaints contact TDLR in Austin at 1-800-803-9202, 512-463-6599 or online. This firm's license is **TSCL 18067 & SIGN MASTERS LICENSE 7312**. To verify a company's license, log onto www.license.state.tx.us/licensesearch. Enter the company's name in the "Inquire by Name" field.