

**PLANTING LEGEND**

- △ CHINQUAPIN OAK, QUERCUS MUHLENBERGII
- ⊕ CEDAR ELM, ULMUS CRASSIFOLIA
- DESERT WILLOW, CHILAPIS LINEARIS
- ⊙ MEXICAN BUCKEYE, UNGNADIA SPECIOSA
- ⊖ YAUPON HOLLY, ILEX VOMITORIA
- ⊗ FLAMELEAF SUMAC, RHUS LANCEOLATA
- ⊗ BAMBOO MUHLY, MUHLENBERGIA DUMOSA
- GOLDEN THRYALLIS, GALPHIMIA GLAUCA
- ⊗ FIRECRACKER FERN, RUSSELLIA EQUISETIFORMIS
- ⊗ MEXICAN HONEYSUCKLE, JUSTICIA SPICIGERA
- ⊗ SWITCHGRASS, PANICUM VIRGATUM
- ⊗ BIG MUHLY GRASS, MUHLENBERGIA LINDHEIMERI
- ⊗ DWARF BARBADOS CHERRY, MALPIGHIA PUNICIFOLIA
- ⊗ TEXAS LANTANA, LANTANA URTICOIDES
- ⊗ CHEROKEE SEDGE, CAREX CHEROKEENSIS
- ⊗ INLAND SEA OATS, CHASMANTHIUM LATIFOLIUM
- ⊗ AMERICAN BEAUTYBERRY, CALLICARPA AMERICANA

PHILIP A. SMITH  
 SURVEY NO. 26  
 ABSTRACT NO. 415

CALLID 1289 ACRES  
 VOL. 1528, PG. 48  
 O.P.R.I.L.C.1

SOIL NOTES:  
 SOIL DEPTHS FOR IMPORTED SOIL SHALL BE AS FOLLOWS  
 1. TREES: 2' DEPTH, REFER TO TREE PLANTING DETAILS.  
 2. RUBS: 12" DEPTH  
 3. GROUND COVER: 9" DEPTH  
 4. REFER TO 32 9300 PLANTS FOR ADDITIONAL SOIL REQUIREMENTS

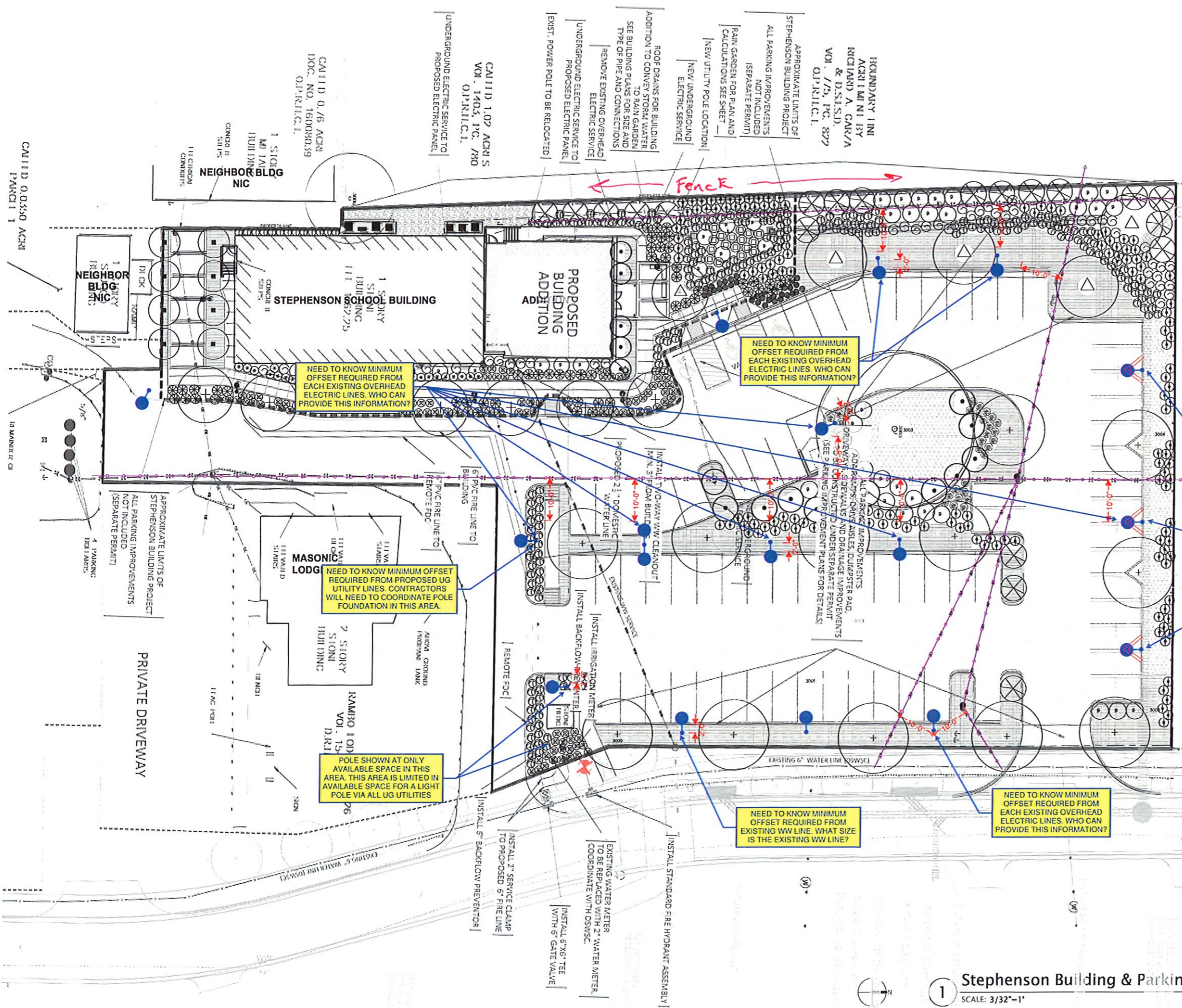
City of Dripping Springs  
 STEPHENSON SCHOOL BUILDING,  
 PARKING LOT

311 Old Fitzhugh  
 Dripping Springs, TX  
 78620

COPYRIGHT  
 Co'design, LLC. Reproduction or use for any purpose other than that authorized by Co'design, LLC is forbidden.

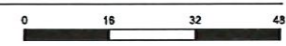
REVISION HISTORY

**PRELIMINARY PARKING LOT ILLUMINATION POLE LOCATIONS**



**1 Stephenson Building & Parking Lot Planting Plan**

SCALE: 3/32"=1'



Project No.	XXXX	Date	XXXX XX, 2024
Sheet Name	Planting Plan		
Sheet Number	L1.02		