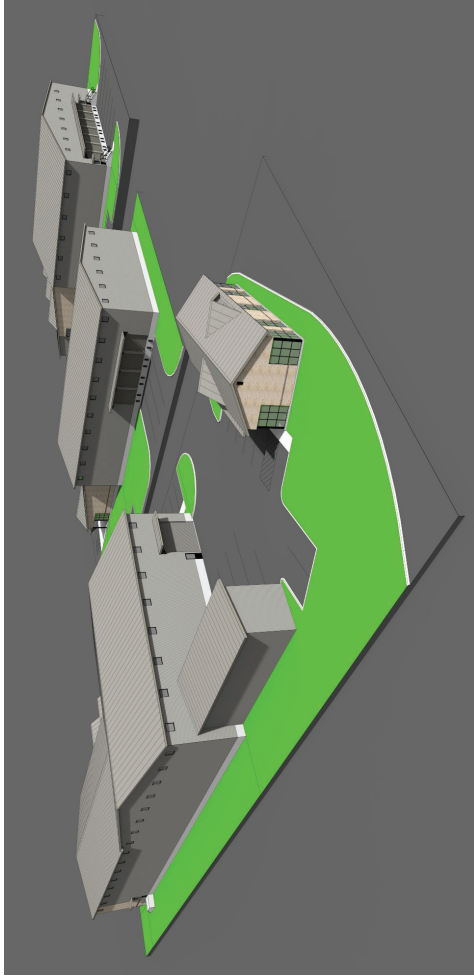
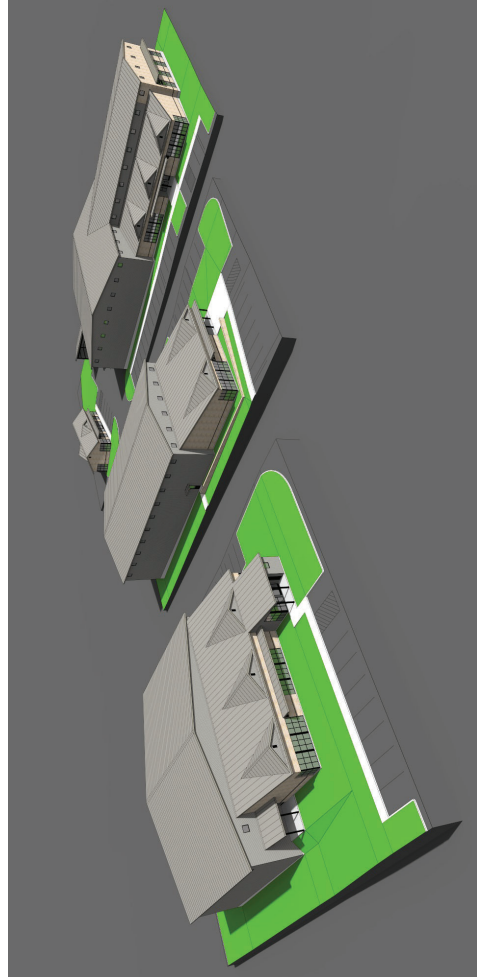


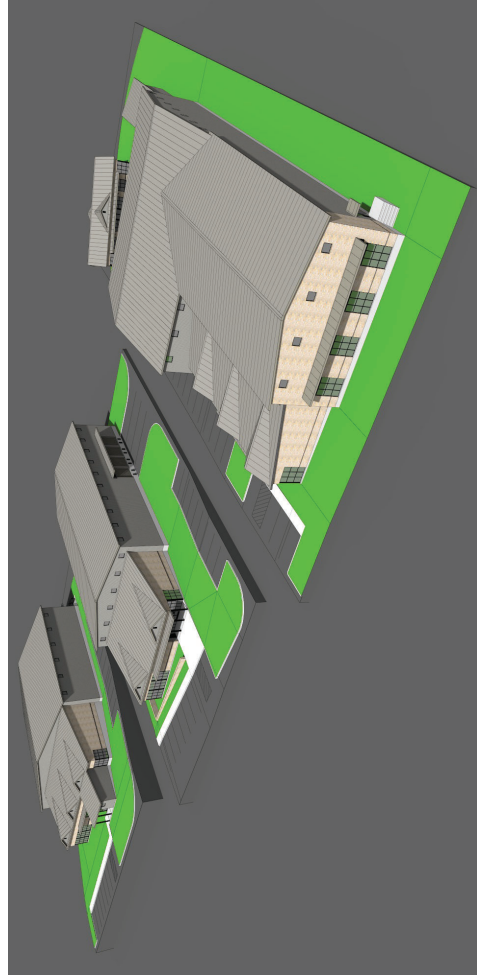
Northeast Corner



Southeast Corner



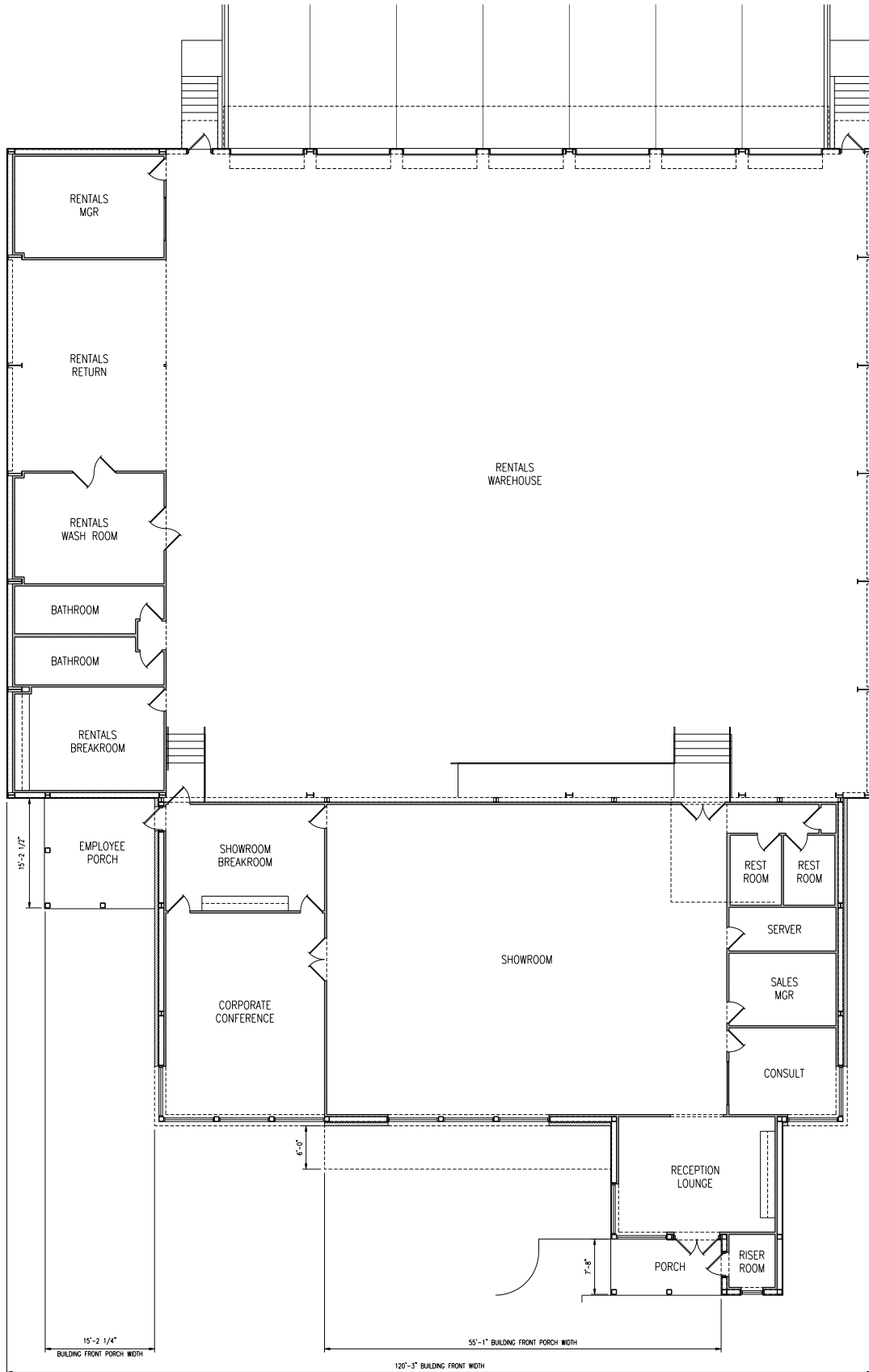
Northwest Corner



Southwest Corner

A Headquarters Complex for WHIM Hospitality  
Entire Complex Exterior Elevations

*Heman Design Studio*  
architecture

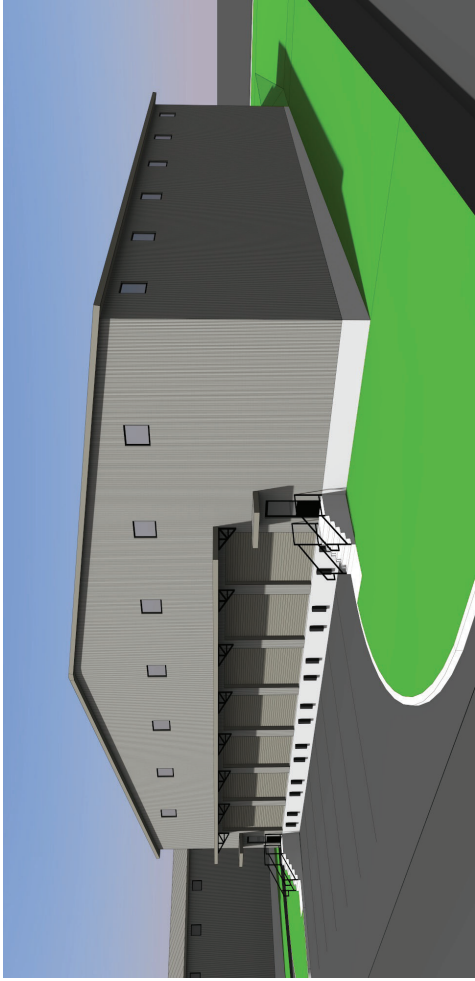


**BUILDING 1 FLOOR PLAN**

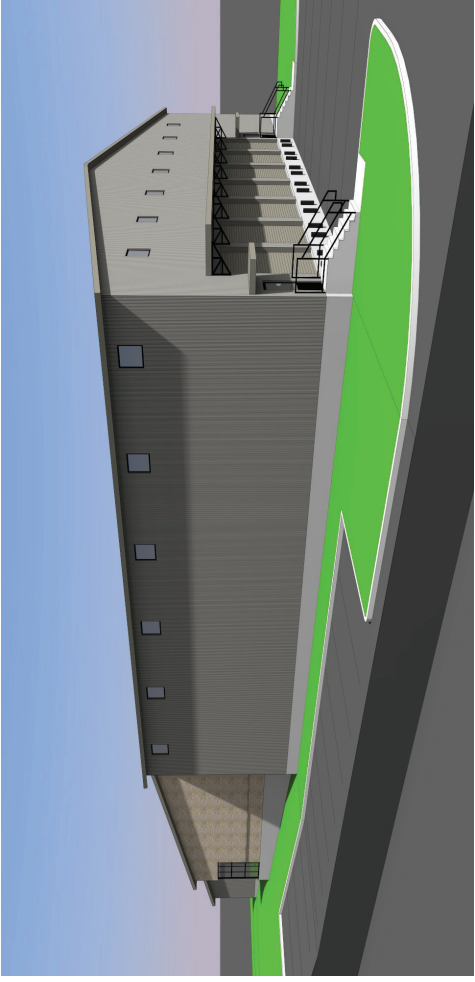
**A Headquarters Complex for WHIM Hospitality  
 27900 Ranch Road 12  
 Dripping Springs, Texas 78620**

*Herron Design Studio*  
 architecture

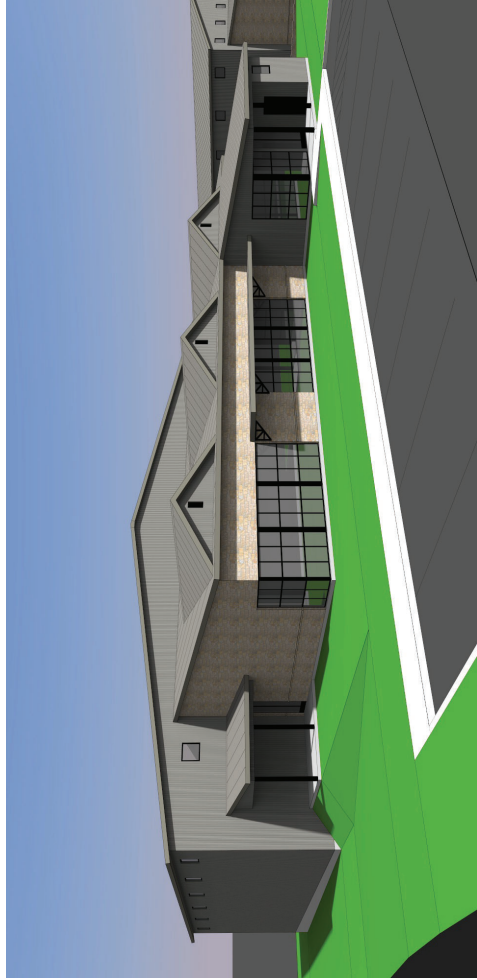
101 Hays Street, Suite 400  
 Dripping Springs, Texas 78620  
 512.805.0100



Northeast Corner



Southeast Corner



Northwest Corner

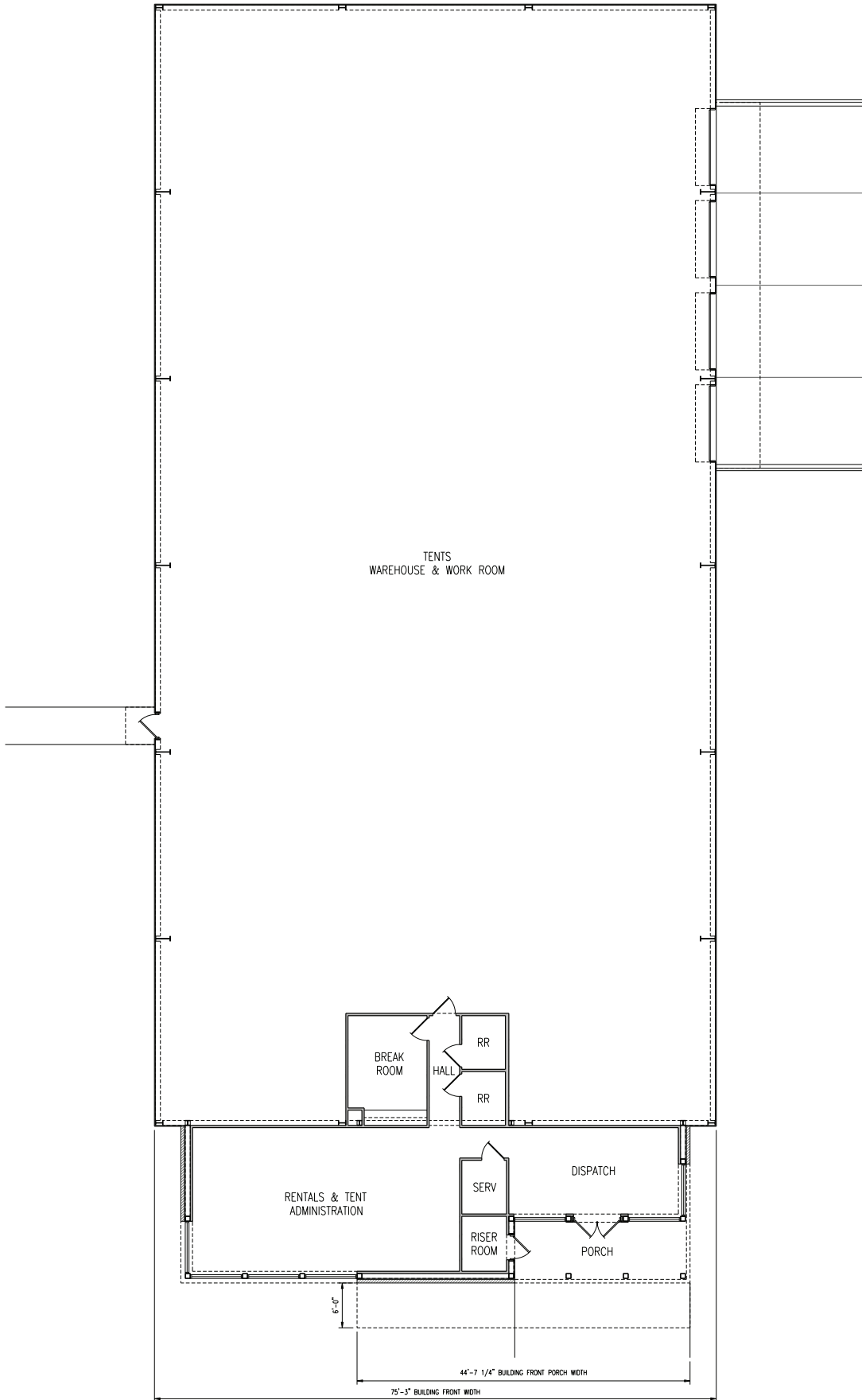


Southwest Corner

A Headquarters Complex for WHIM Hospitality  
Building 1 Exterior Elevations

*Heman Design Studio*  
architecture

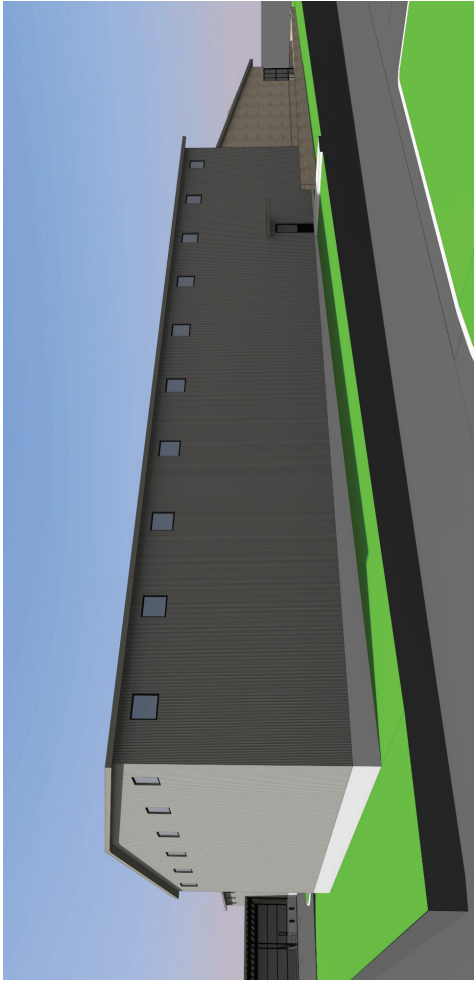




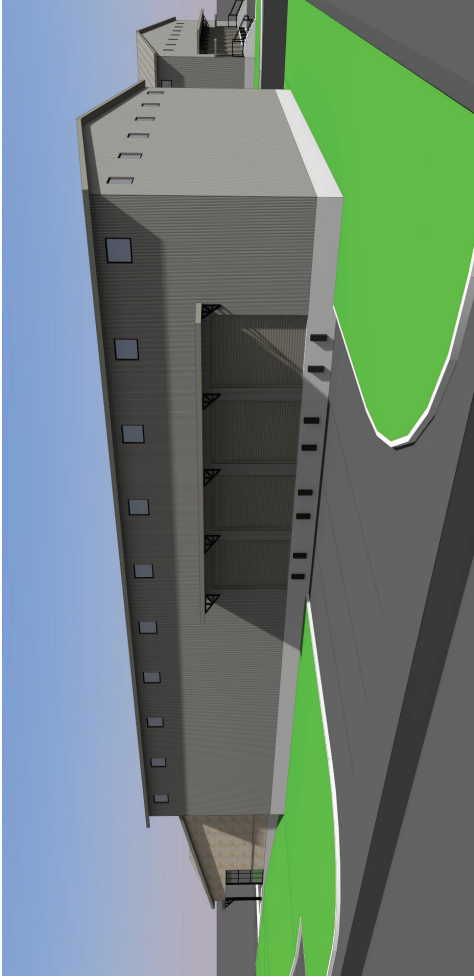
BUILDING 2 FLOOR PLAN

A Headquarters Complex for WHIM Hospitality  
 27900 Ranch Road 12  
 Dripping Springs, Texas 78620

*Heron Design Studio*  
 architecture  
 101 Hays Street, Suite 400  
 Dripping Springs, Texas 78620  
 512.255.9599



**Northeast Corner**



**Southeast Corner**



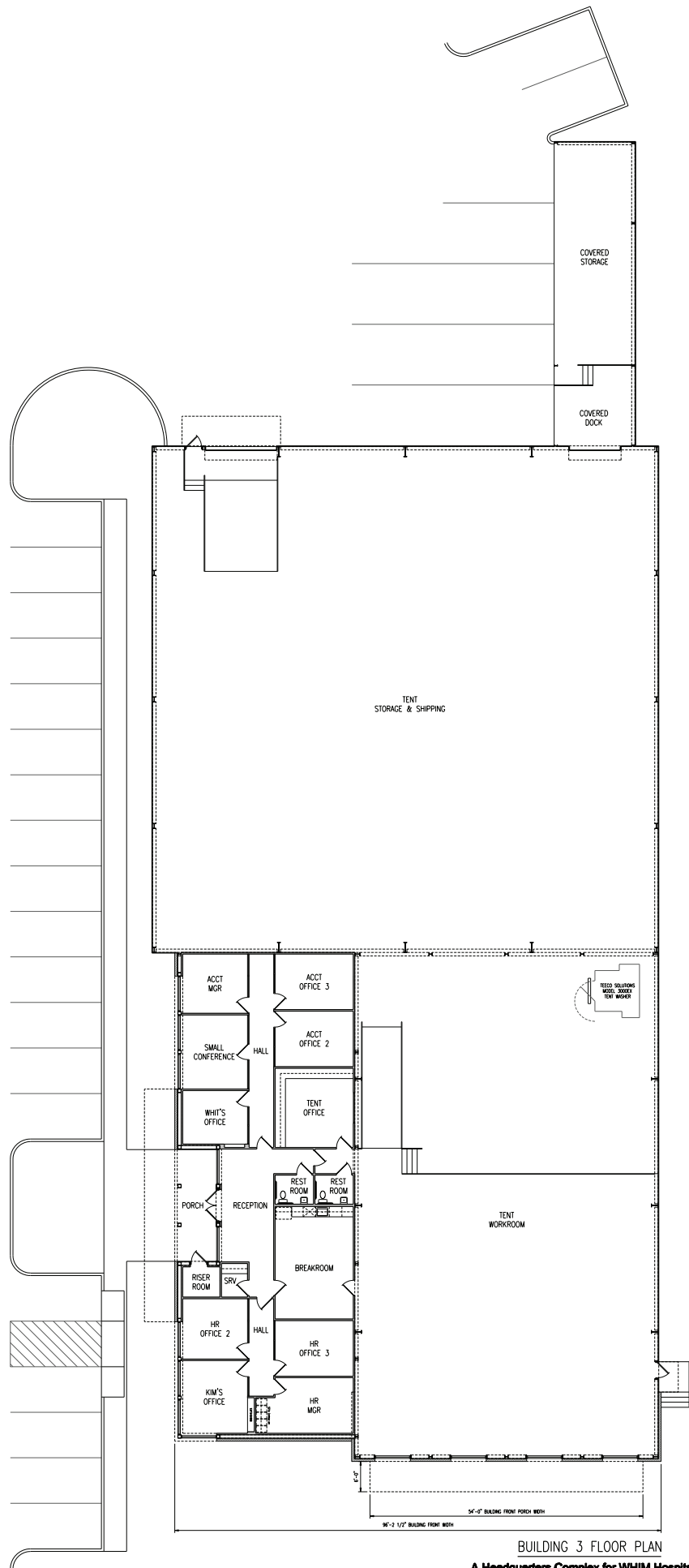
**Northwest Corner**



**Southwest Corner**

**A Headquarters Complex for WHIM Hospitality  
Building 2 Exterior Elevations**

*Heman Design Studio*  
**architecture**

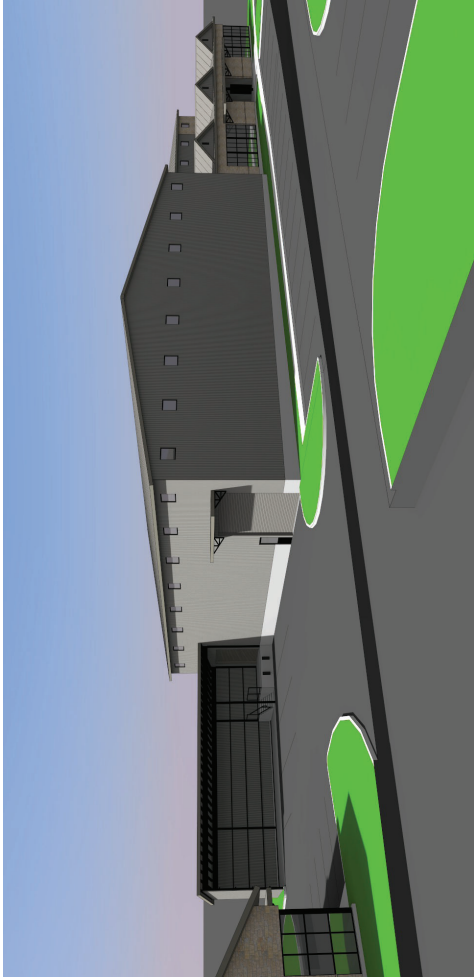


**BUILDING 3 FLOOR PLAN**

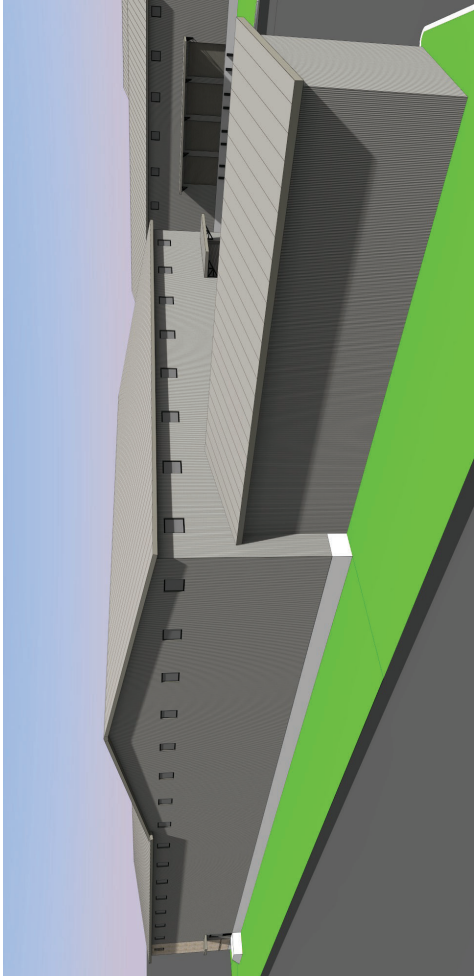
**A Headquarters Complex for WHIM Hospitality**  
 27800 Ranch Road 12  
 Dripping Springs, Texas 78620

**Henson Design Studio**  
 ARCHITECTS

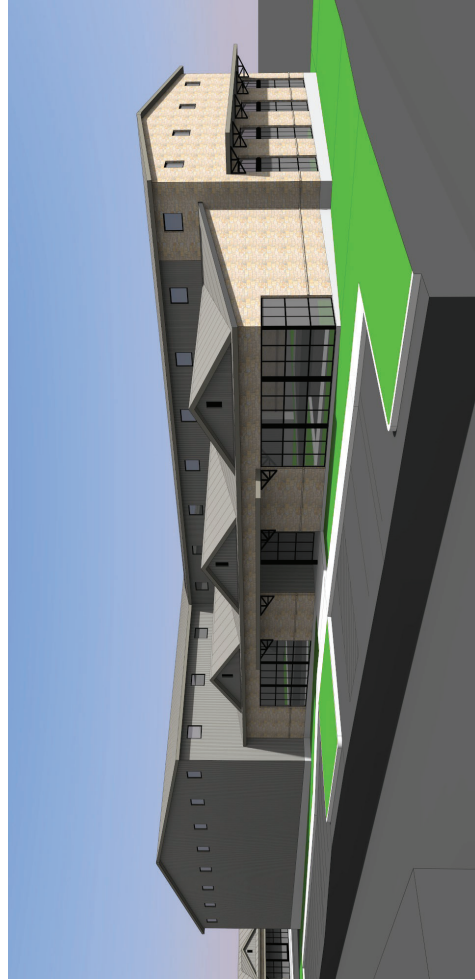
191 Maple Street, Suite 400  
 Dripping Springs, Texas 78620  
 817.252.2222



Northeast Corner



Southeast Corner



Northwest Corner

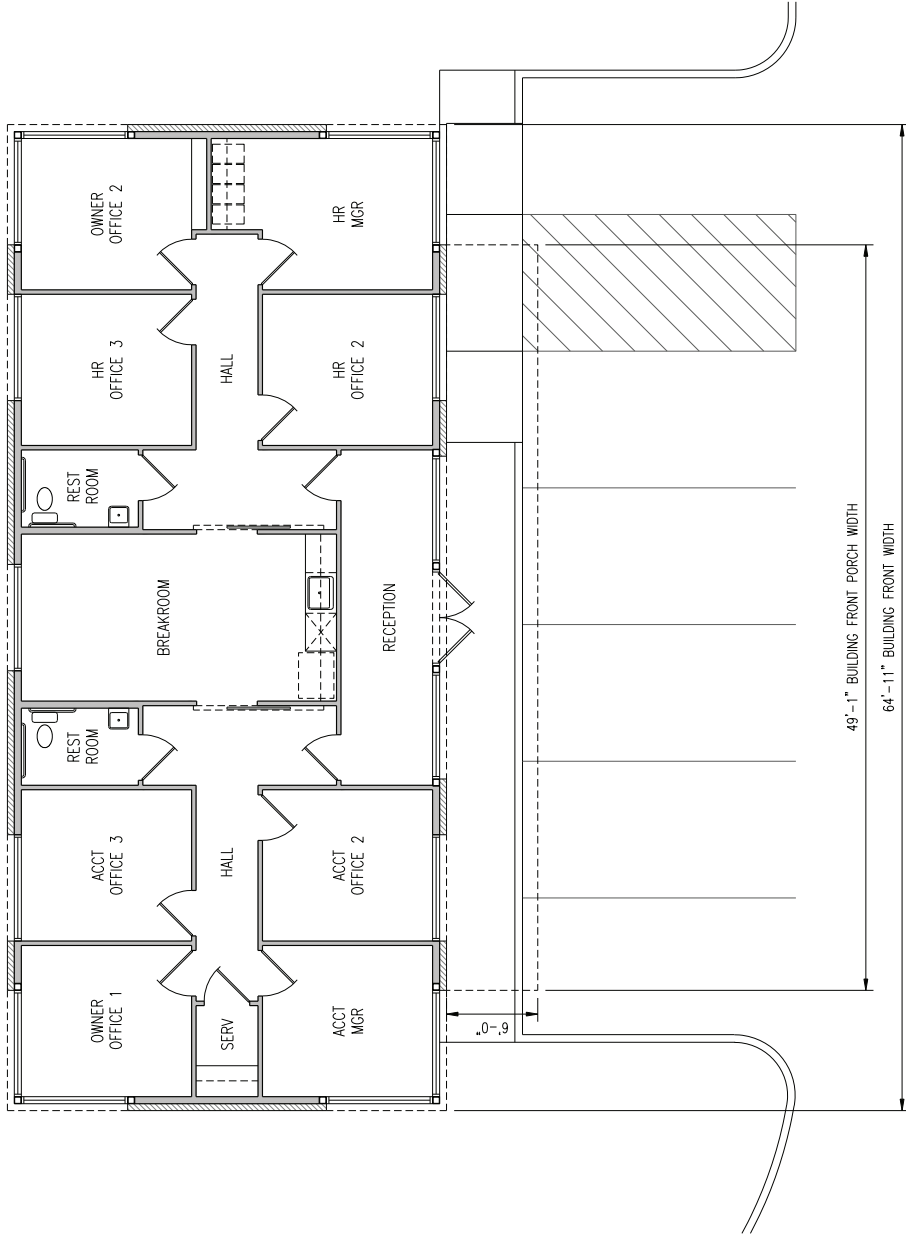


Southwest Corner

A Headquarters Complex for WHIM Hospitality  
Building 3 Exterior Elevations

*Heman Design Studio*  
architecture

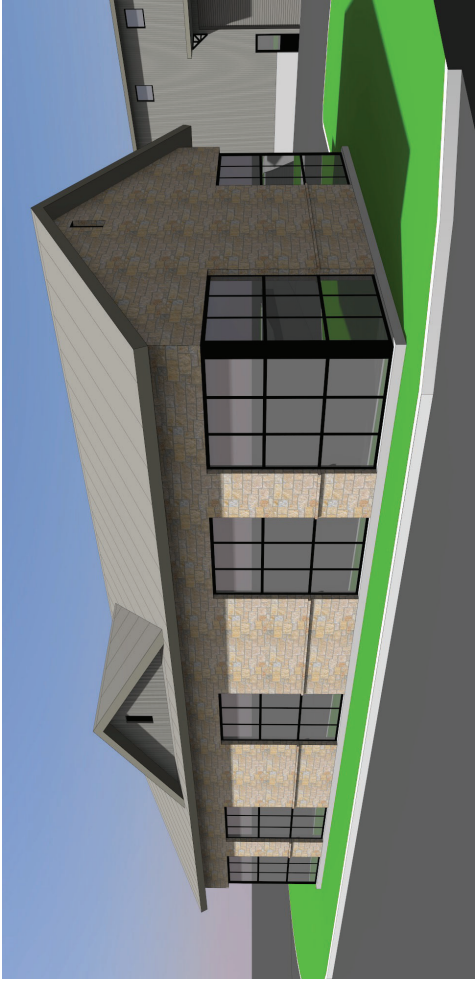




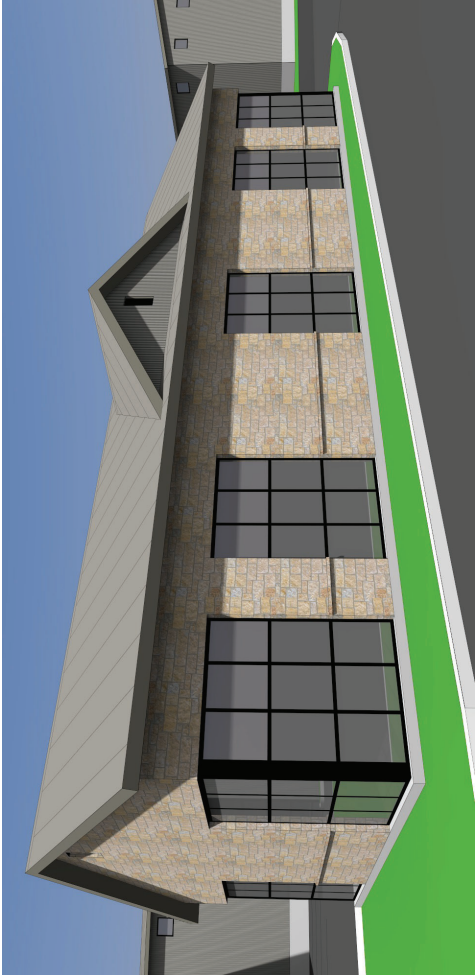
BUILDING 4 FLOOR PLAN

A Headquarters Complex for WHIM Hospitality  
 27900 Ranch Road 12  
 Dripping Springs, Texas 78620

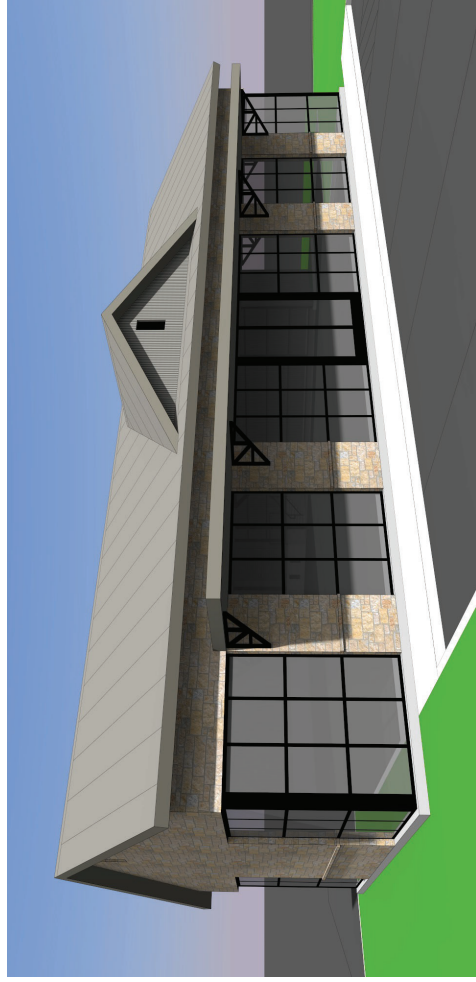
*Heron Design Studio*  
 a r c h i t e c t u r e  
 101 Hays Street, Suite 409  
 Dripping Springs, Texas 78620  
 512.858.9889



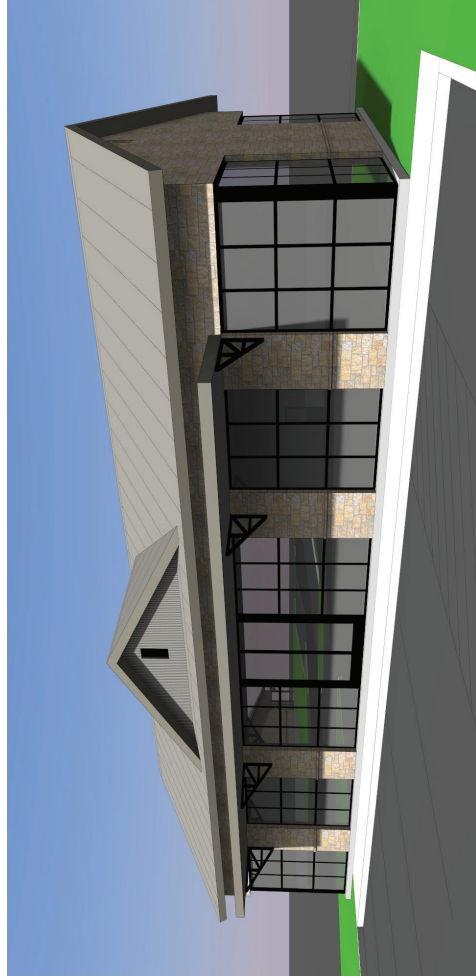
Northeast Corner



Southeast Corner



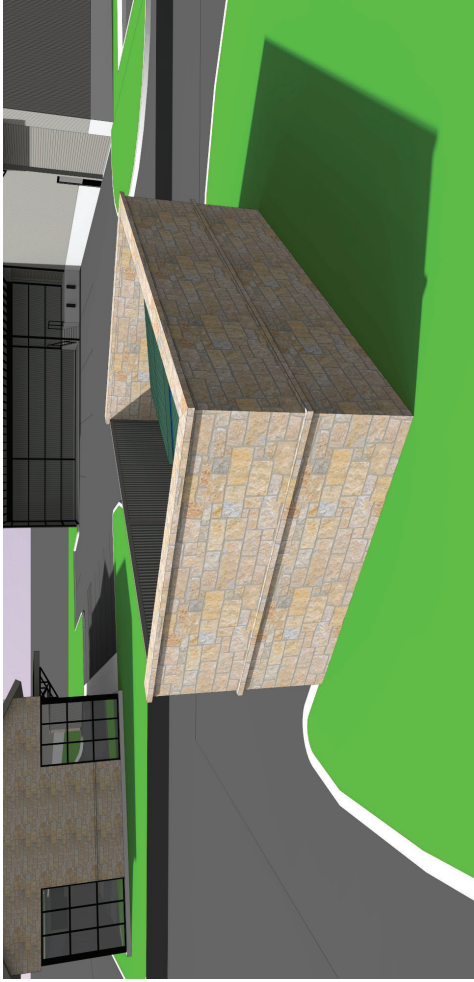
Northwest Corner



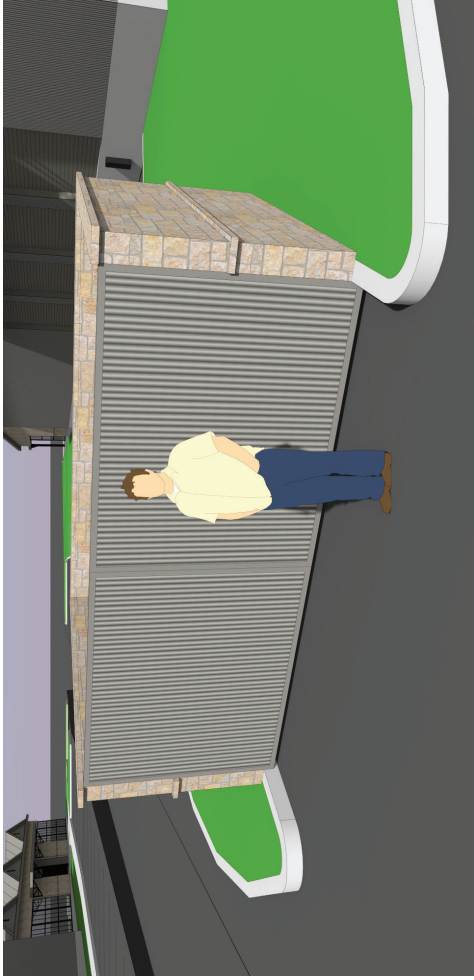
Southwest Corner

A Headquarters Complex for WHIM Hospitality  
Building 4 Exterior Elevations

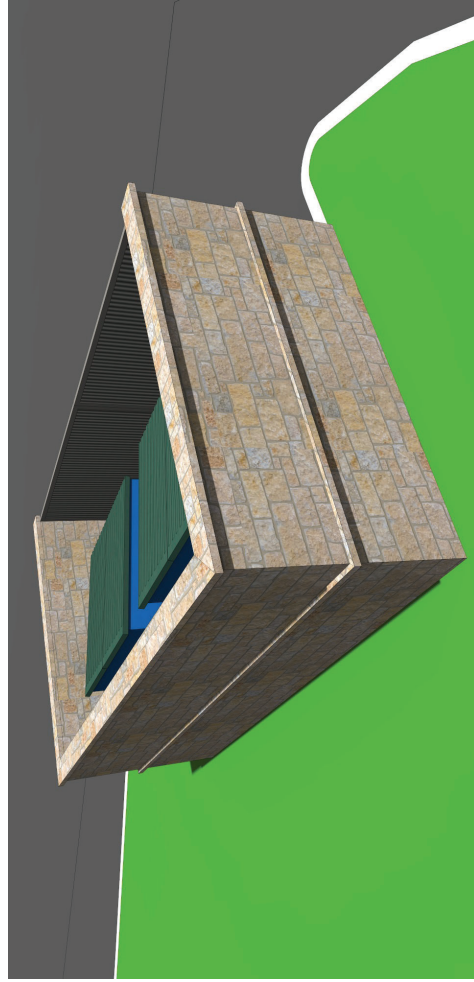
*Henson Design Studio*  
architecture



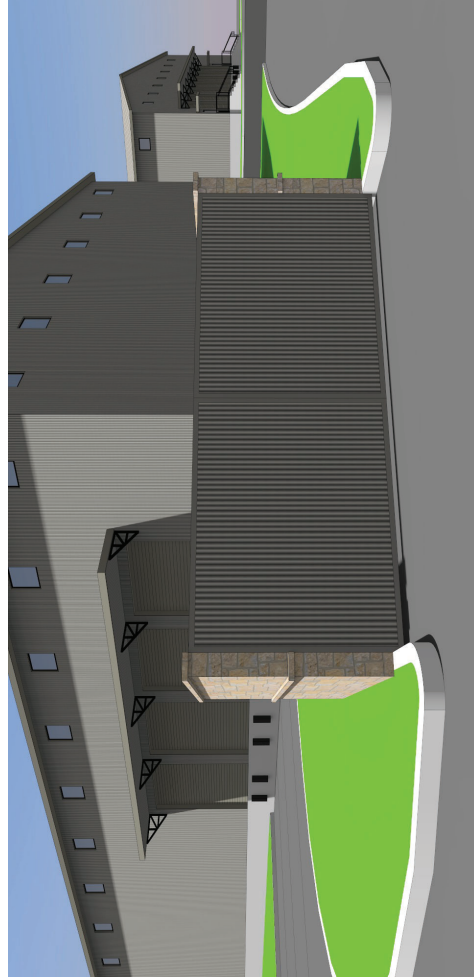
Rear Right Corner



Front Right Corner



Rear Left Corner



Front Left Corner

A Headquarters Complex for WHIM Hospitality  
Trash Enclosure Elevations

Henson Design Studio  
architecture

# Herron Design Studio

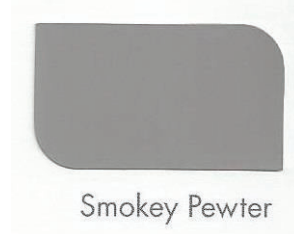
a r c h i t e c t u r e

101 Hays Street, Suite 409 Dripping Springs, TX 78620 512.858.9889

## Materials List for A Headquarters Complex for WHIM Hospitality

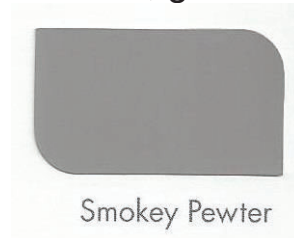
### Roofing Material

Standing seam “Smokey Pewter” colored metal panels



### Siding, Trim Gutters & Downspouts Material

PBU “Smokey Pewter” colored metal panels  
“Smokey Pewter” trim, gutters & downspouts



### Stone Veneer Material

“Native Limestone” tans, greys and other earth tones



### Windows and Storefront Material

“black” colored aluminum-framed insulated low E glazed units

