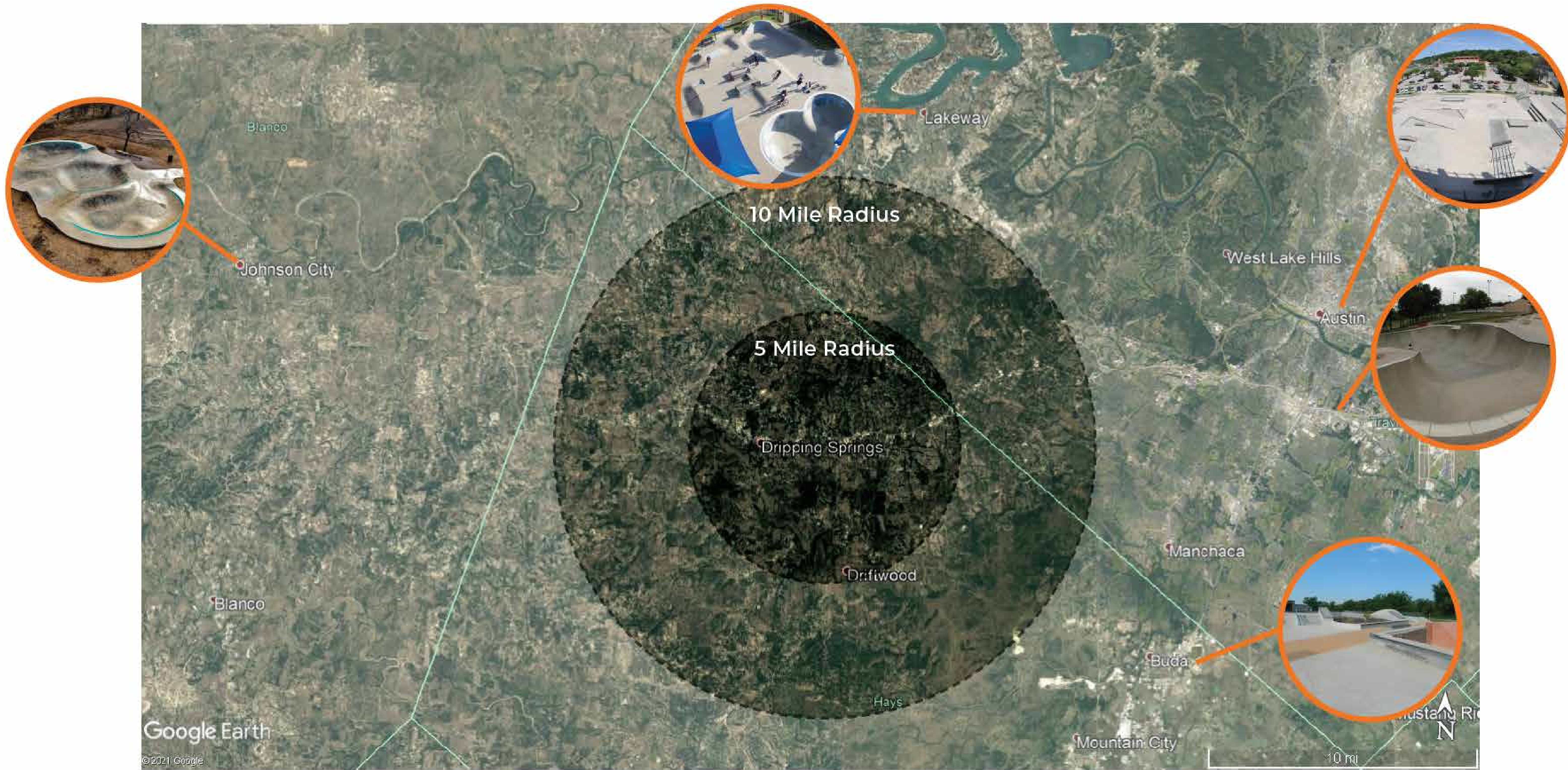


DRIPPING SPRINGS - NEW SKATEPARK

Regional Skatepark Context



Dripping Springs, TX

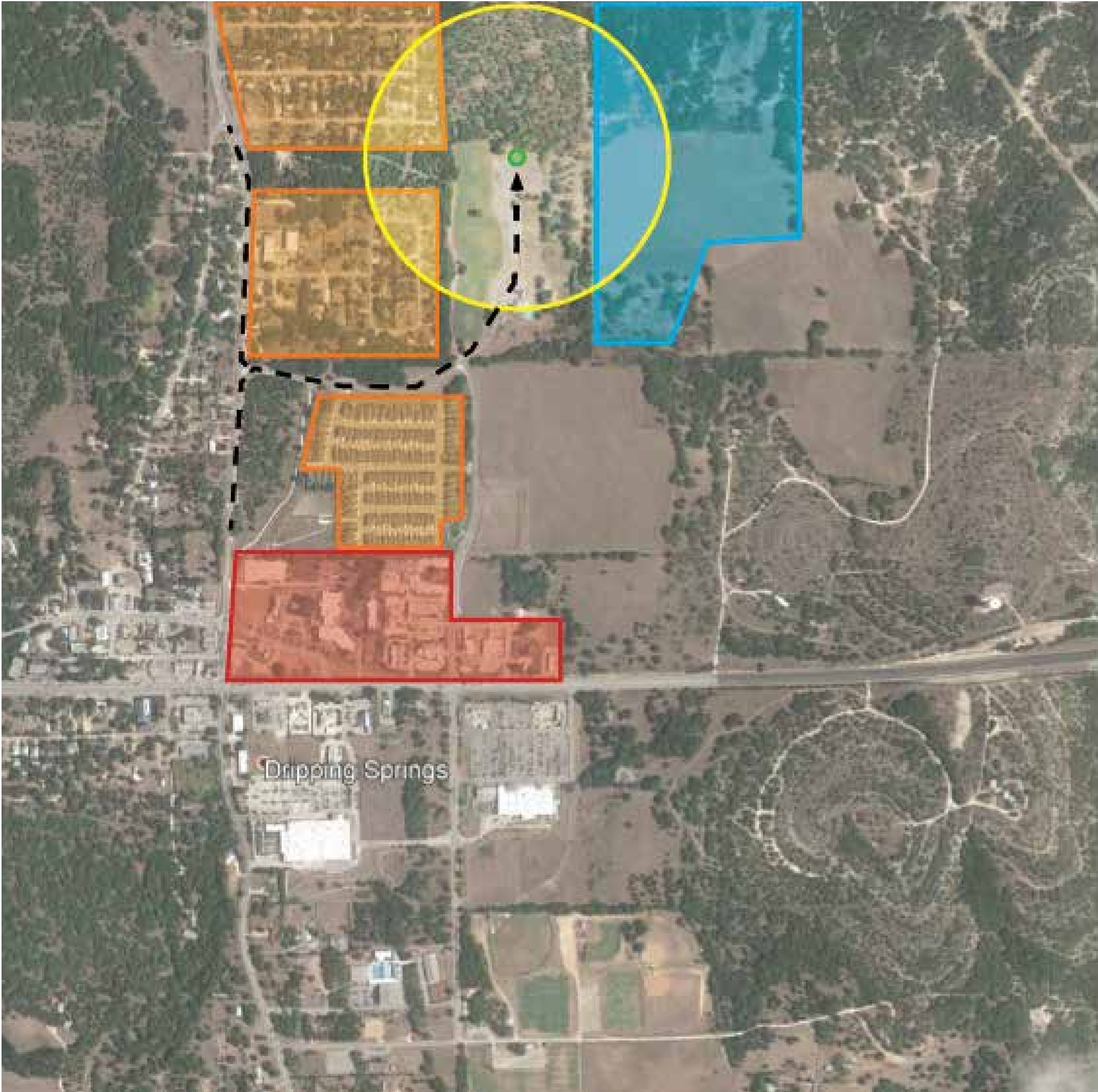
June 25, 2021

WWW.NEWLINESKATEPARKS.COM

DRIPPING SPRINGS - NEW SKATEPARK

Skatepark Site Analysis

COUNTY CONTEXT PLAN



- Residential
- New Development
- Commercial
- 1,000' radius
- Proposed Entrance
- Vehicle Access

- Proposed Skatepark
- City Pool
- Athletic Fields
- Perimeter Pathway
- Skatepark Parking
- Vehicle Access

OVERALL PARK CONTEXT PLAN



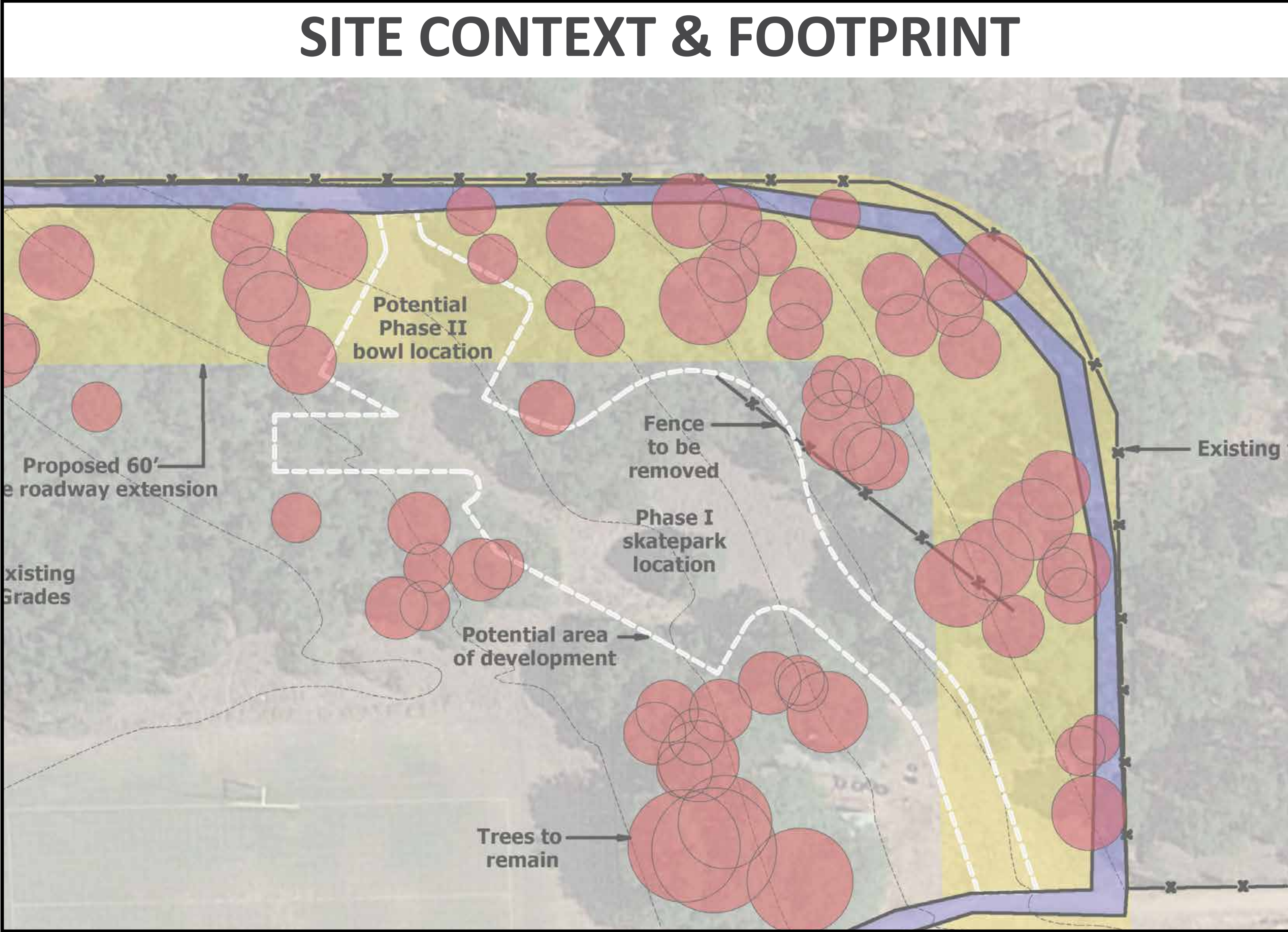
Dripping Springs, TX

June 25, 2021

WWW.NEWLINEKATEPARKS.COM

DRIPPING SPRINGS - NEW SKATEPARK

Skatepark Planning



GOALS: TREE PRESERVATION DEFINED ENTRANCE FLOW AND STREET PHASE 2 BOWL



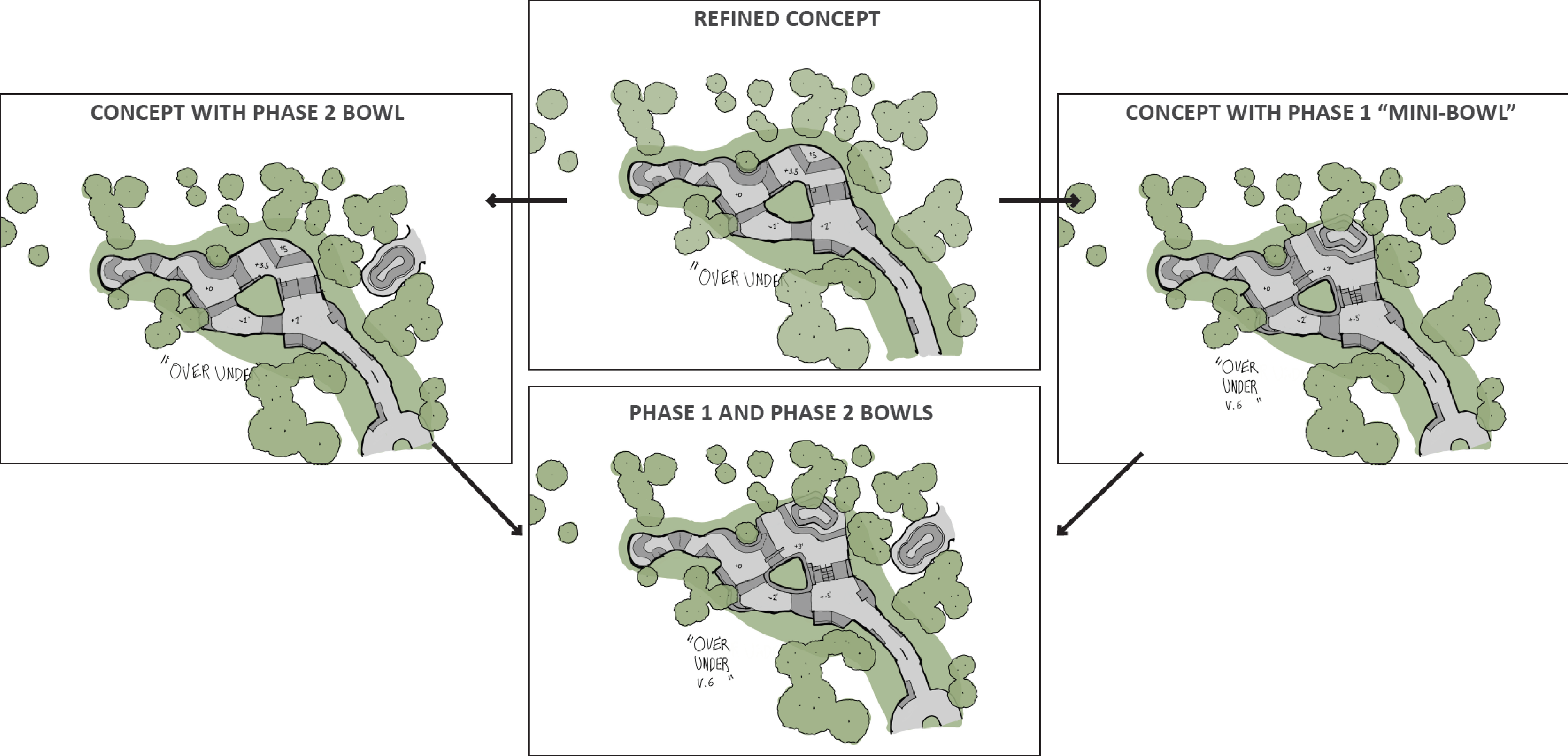
Dripping Springs, TX

June 25, 2021

WWW.NEWLINESKATEPARKS.COM

DRIPPING SPRINGS - NEW SKATEPARK

Schematic Concept Design Development



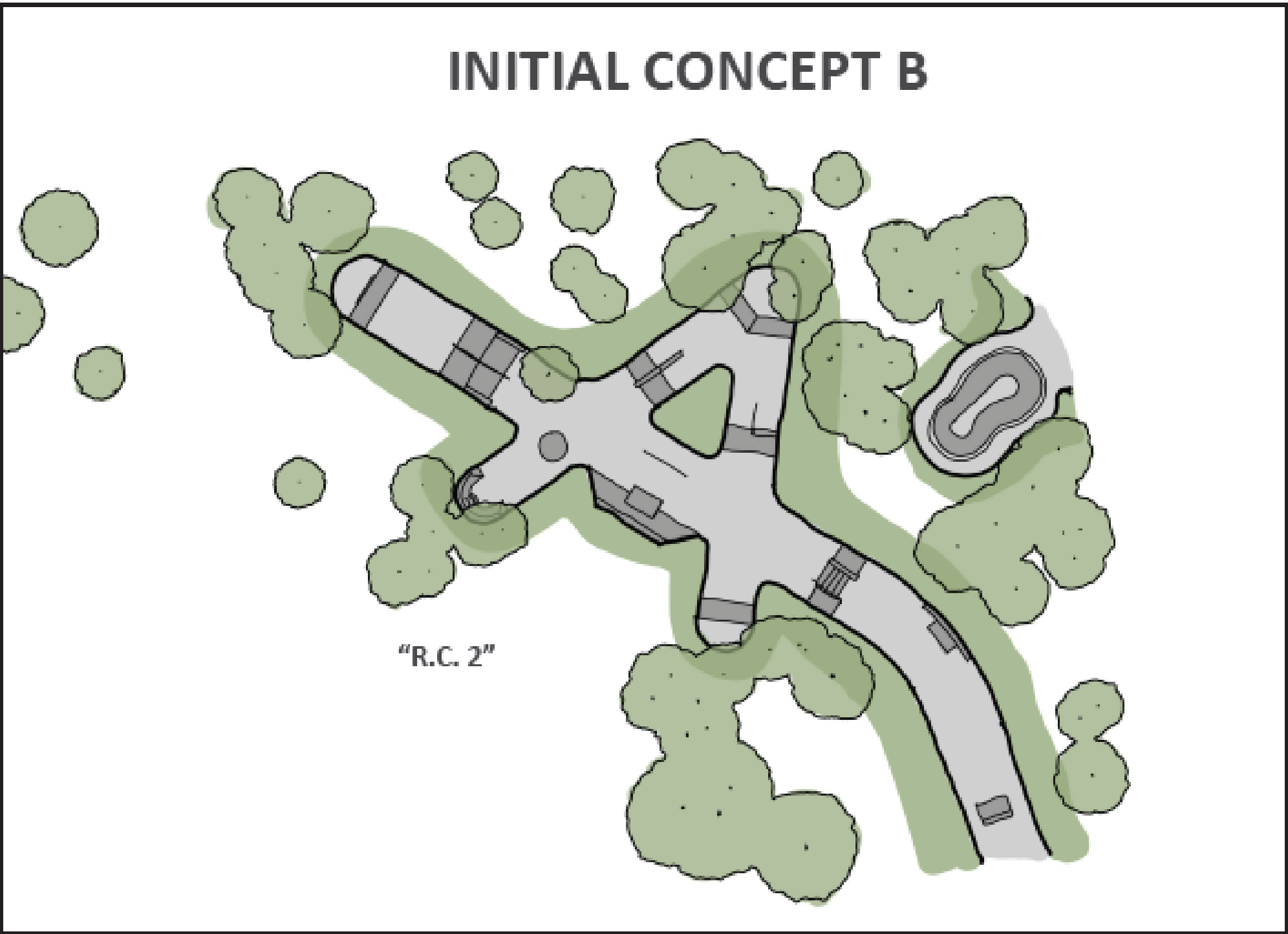
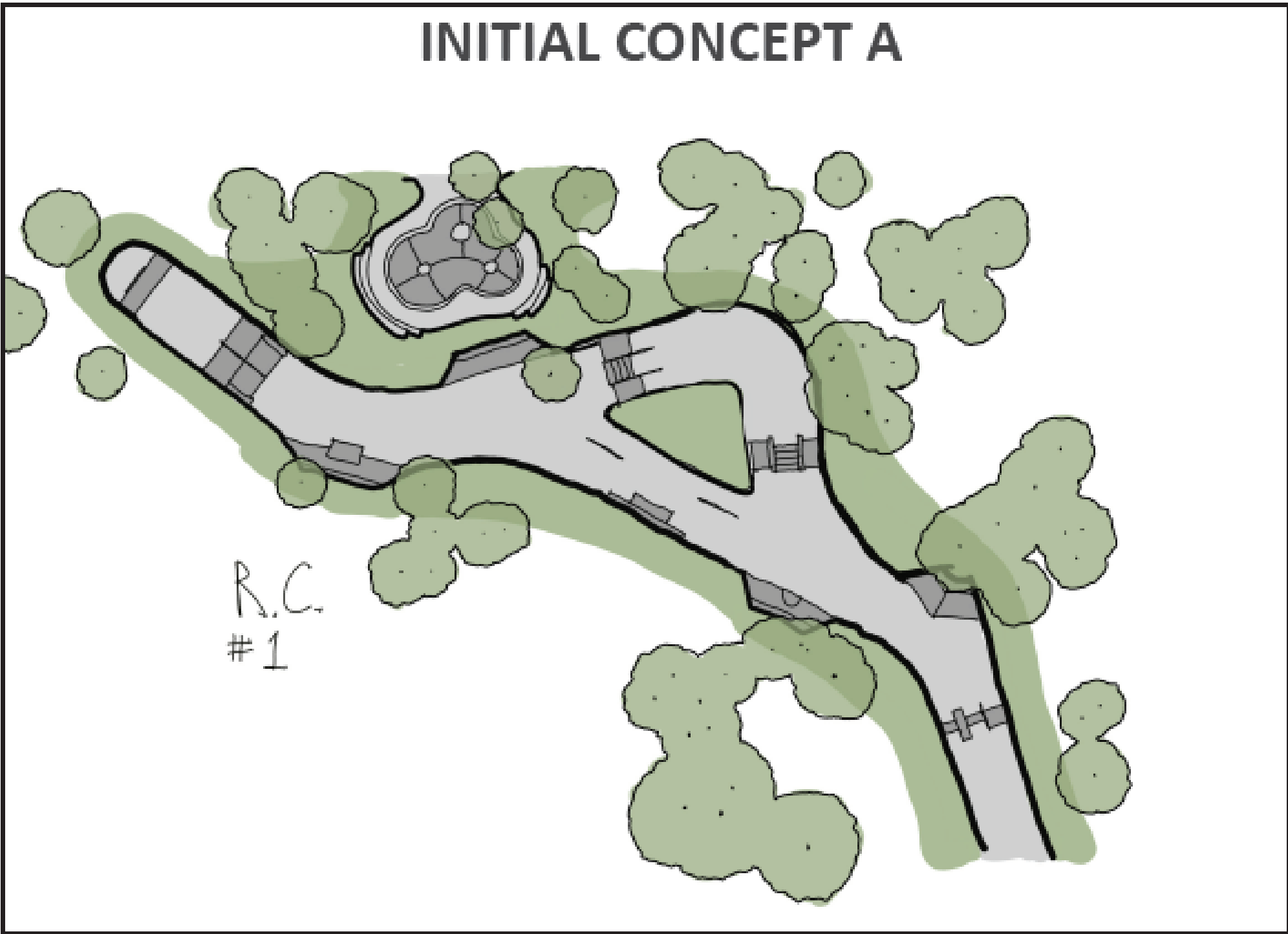
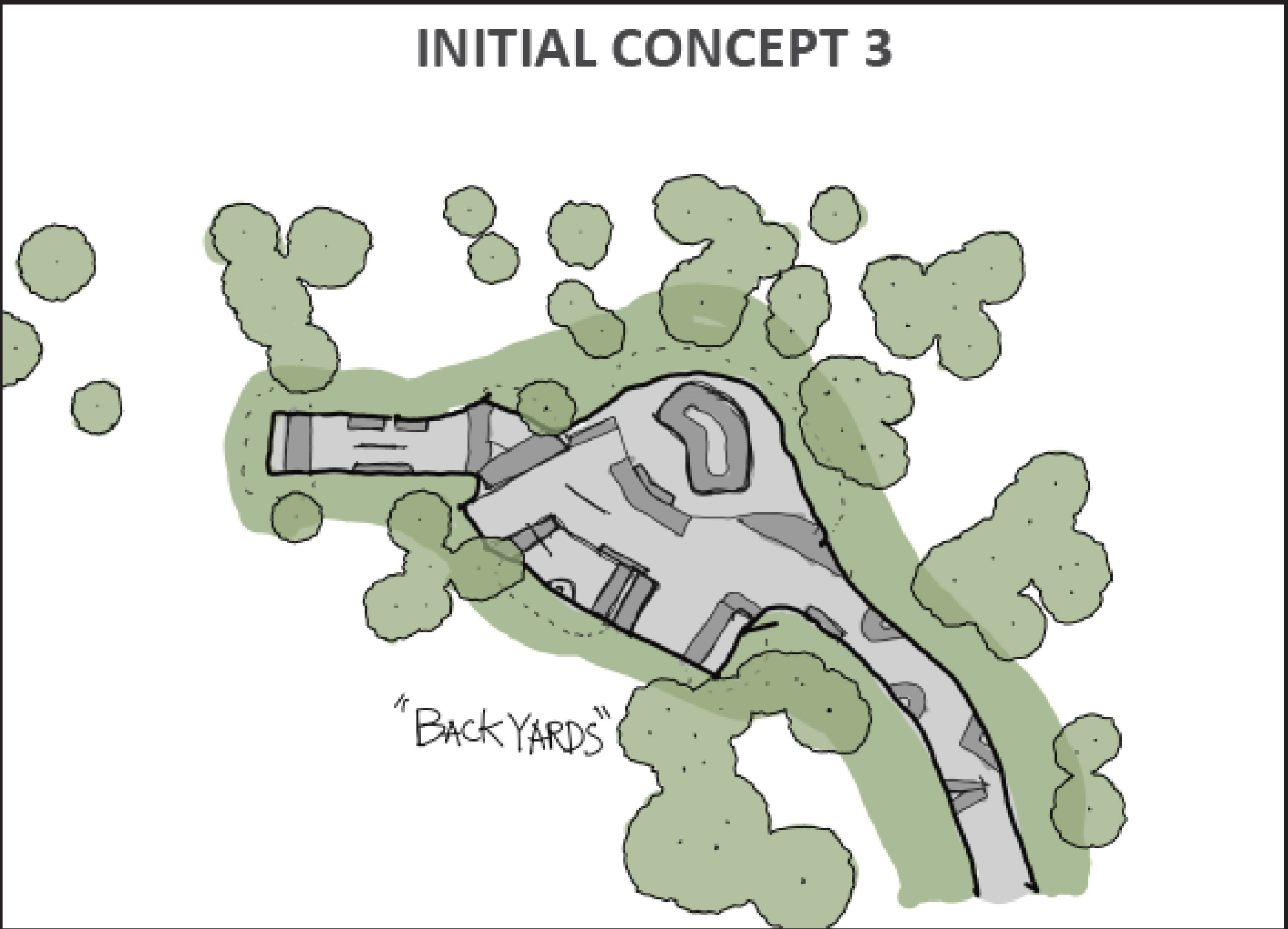
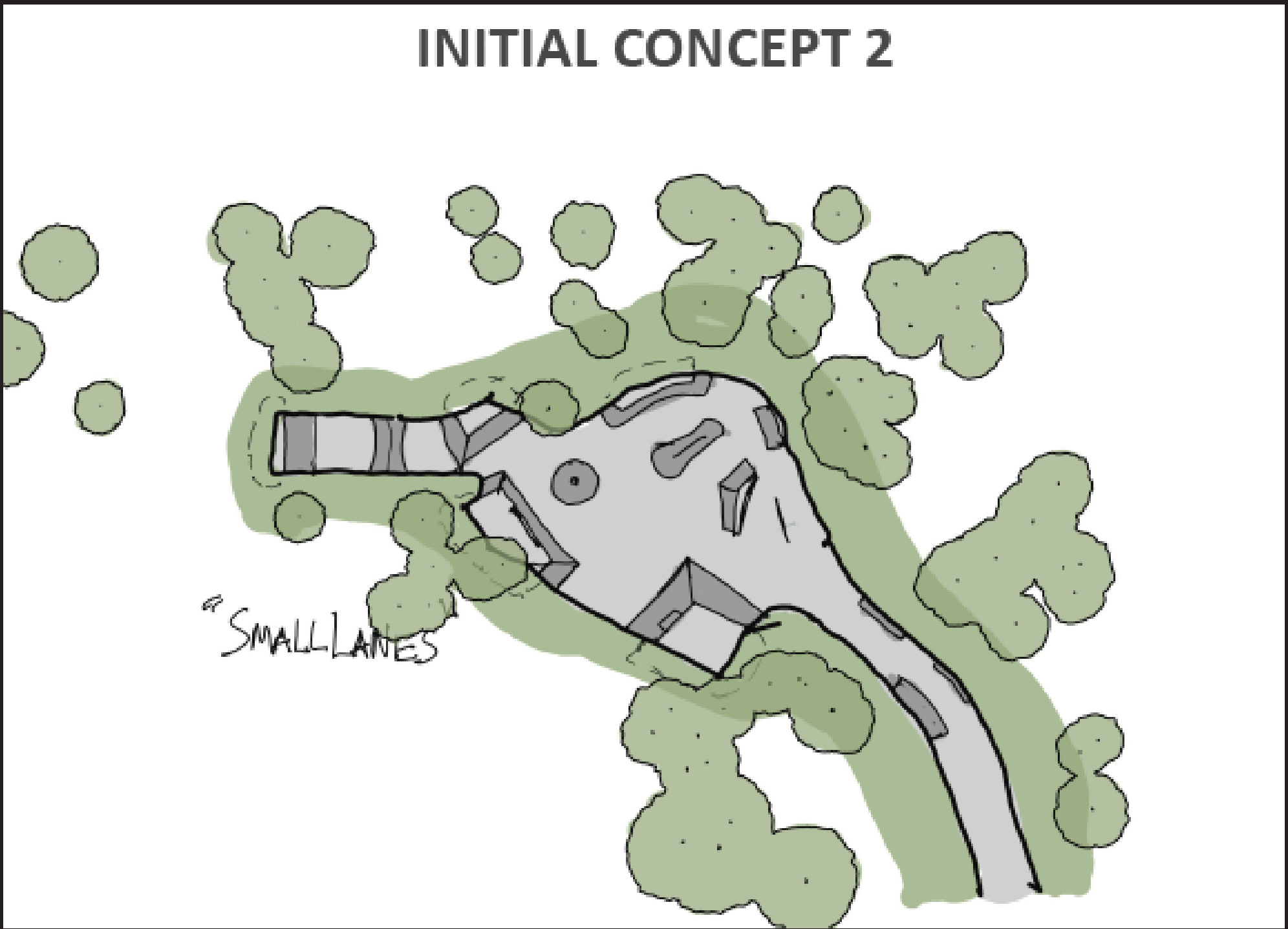
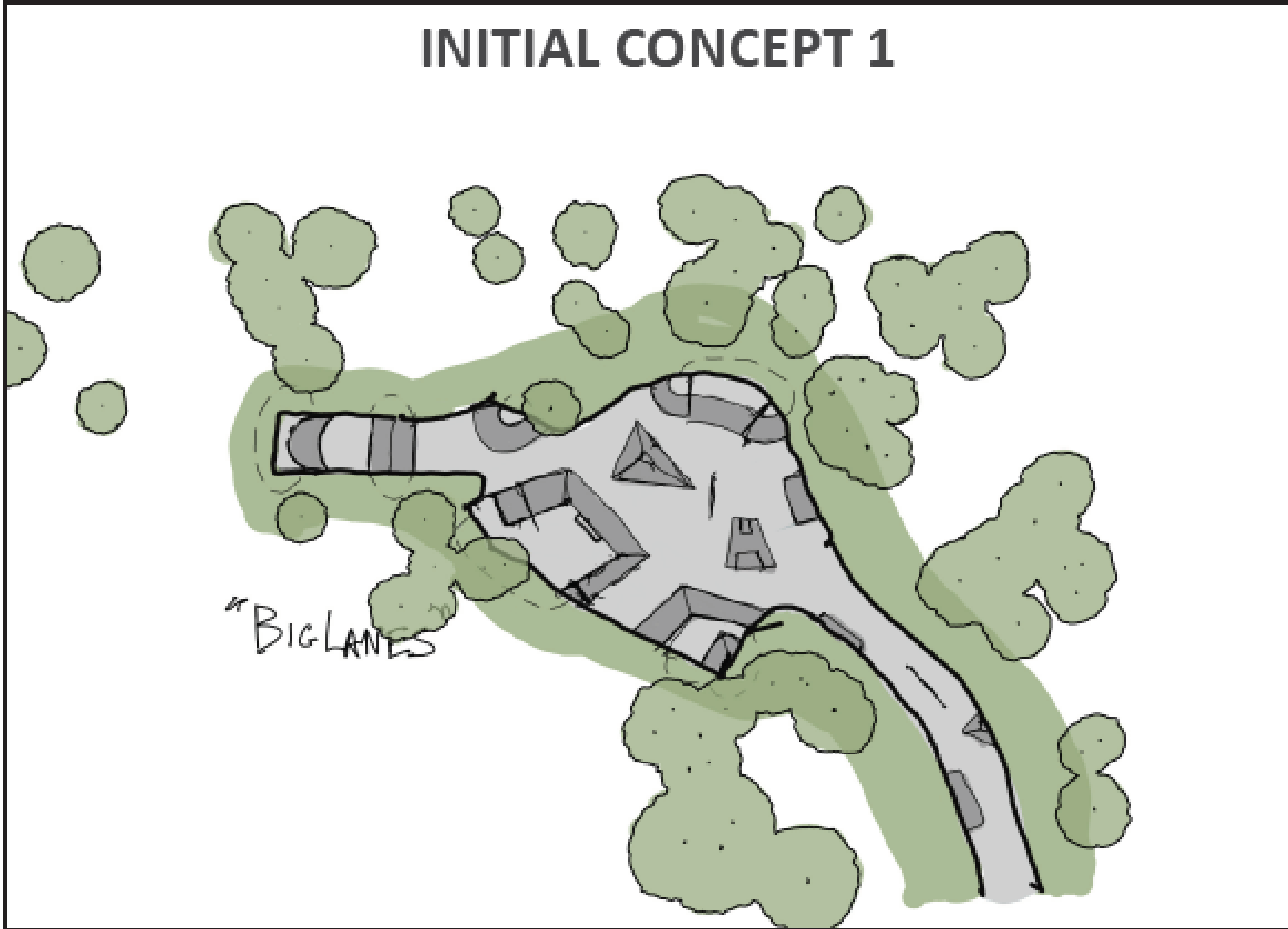
Dripping Springs, TX

June 25, 2021

WWW.NEWLINESKATEPARKS.COM

DRIPPING SPRINGS - NEW SKATEPARK

Schematic Concept Design Development



Dripping Springs, TX

June 25, 2021

WWW.NEWLINESKATEPARKS.COM

DRIPPING SPRINGS - NEW SKATEPARK

Schematic Concept Design Feature Plan

FEATURE LEGEND

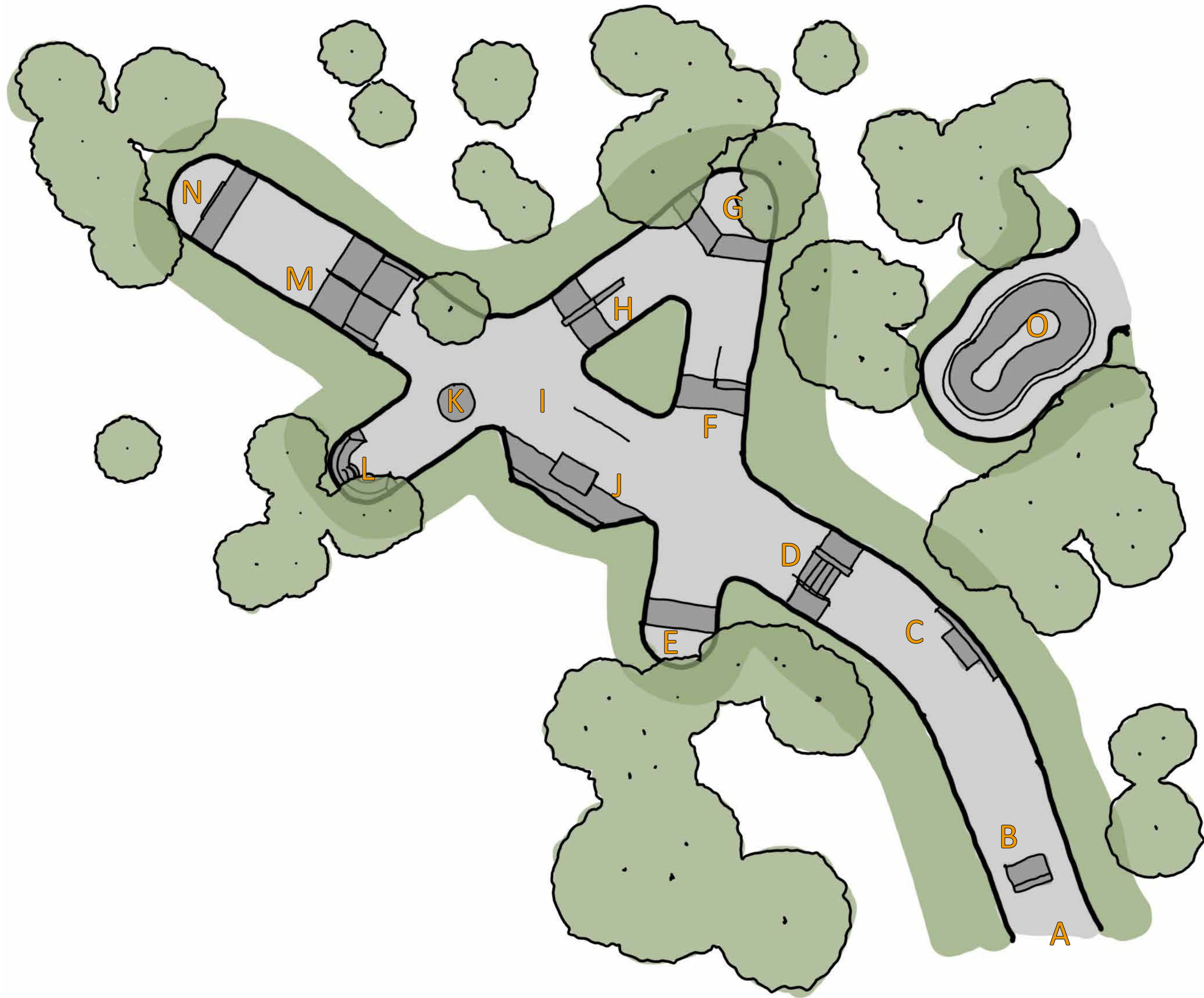
- A - Skatepark Entry
- B - 3.5' Return Quarter Pipe
- C - Manual Pad/Ledge Combo
- D - 2.5' Bank with 5-stair, hubba, and handrail
- E - 4' Bank
- F - 1.5' bank with step up and bump to bar
- G - 3' banked hip
- H - 1.5' bank with flat/down hubba
- I - 14" Flatbar
- J - Bank with manual pad combo
- K - Pump bump
- L - Radial pocket quarter pipe with wedding cake
- M - A-frame with handrail and hubbas
- N - 4' Quarter pipe
- O - Future Phase Pool

Skatepark **features are schematic** and will be modified based on **community input**. The current design is schematic to represent the intended **terrain style** within the project scope.



Existing Conditions Perspective View

SCHEMATIC CONCEPT DESIGN PLAN



EXAMPLE TERRAIN PHOTOS



Dripping Springs, TX

June 25, 2021

WWW.NEWLINEKATEPARKS.COM

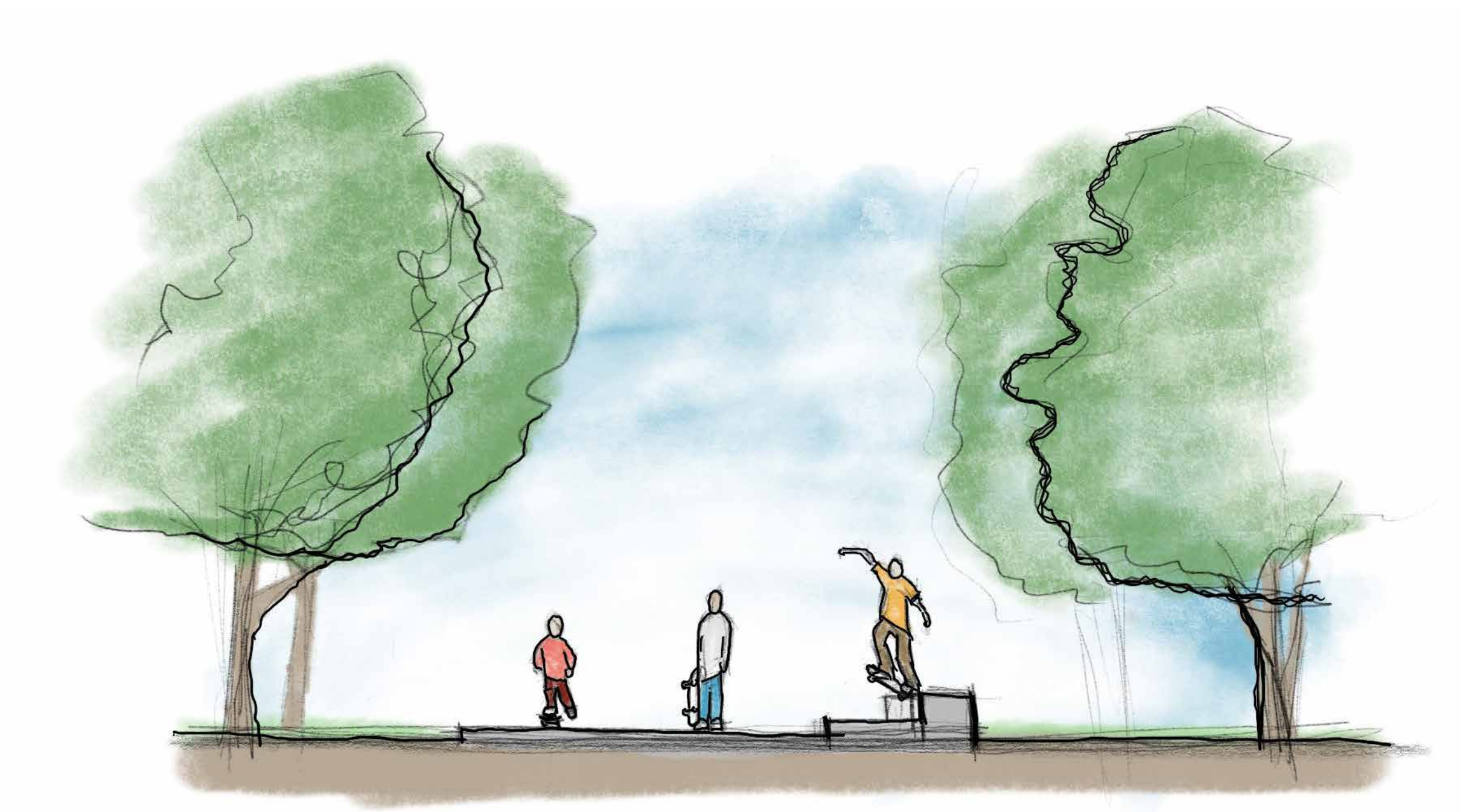
DRIPPING SPRINGS - NEW SKATEPARK

Schematic Concept Design Views

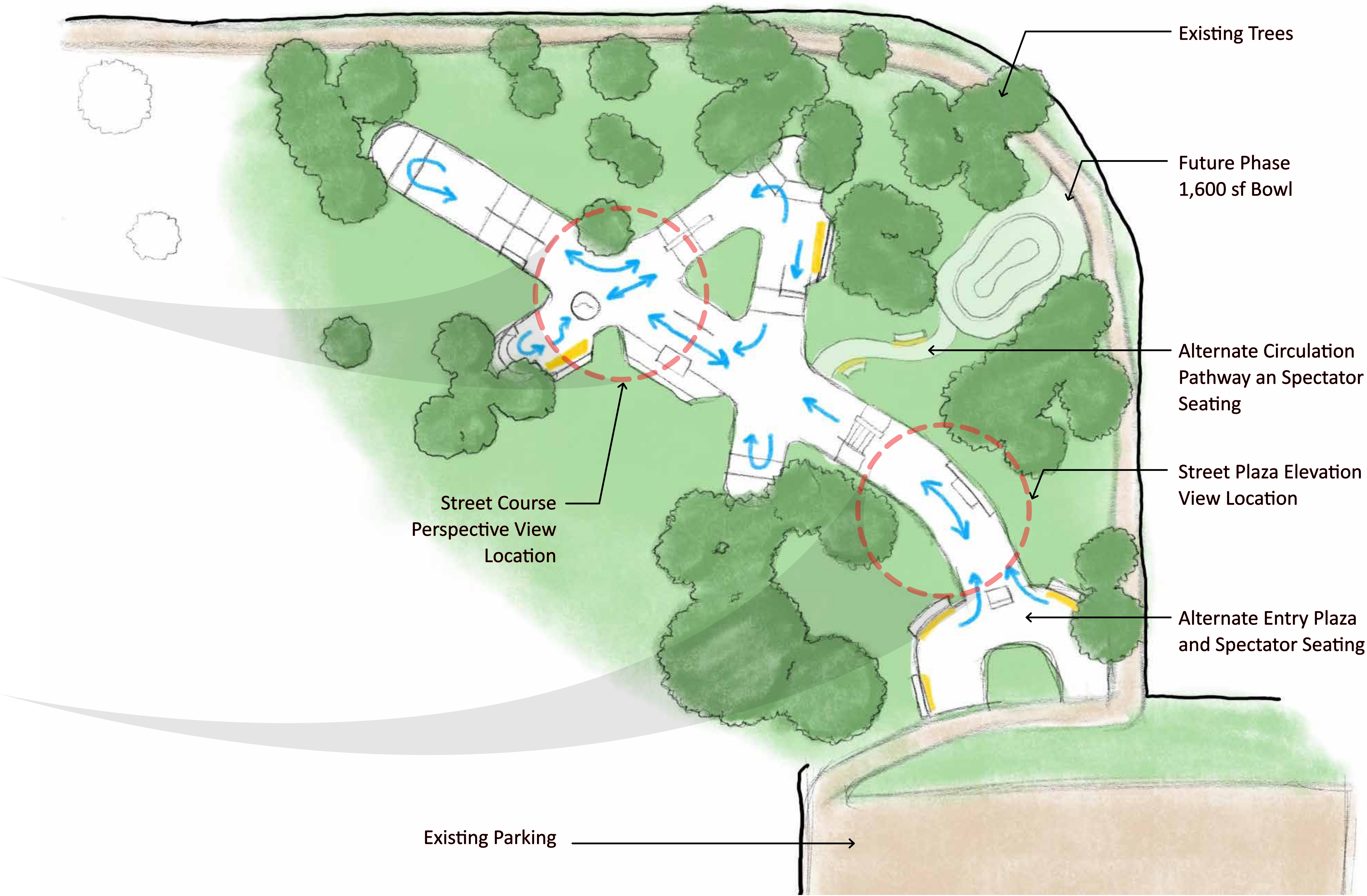
STREET COURSE PERSPECTIVE VIEW



SKATEPARK ELEVATION VIEW



SCHEMATIC CONCEPT DESIGN SITE CIRCULATION PLAN



Dripping Springs, TX

June 25, 2021

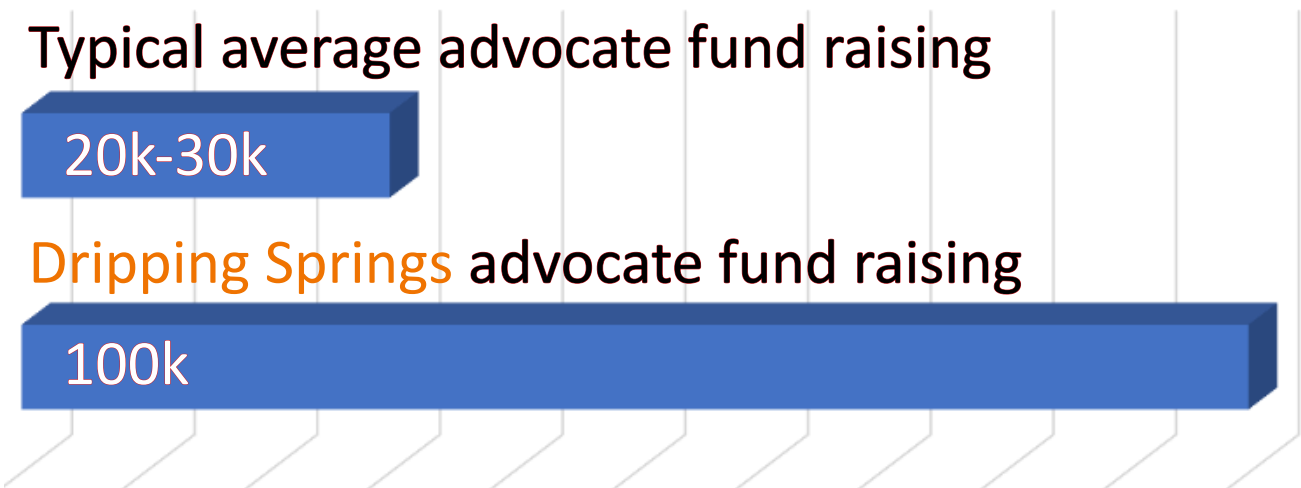
WWW.NEWLINESKATEPARKS.COM

DRIPPING SPRINGS - NEW SKATEPARK

Schematic Concept Design Cost Exhibit

FUNDING SOURCES

Advocate Fund raising	\$100,000
County Funding	\$550,000
Additional Funding Request	\$75,000
(Inflation/Increased Material Costs - 14%)	
Total Funding	\$725,000



SKATEPARK COST BREAKDOWN

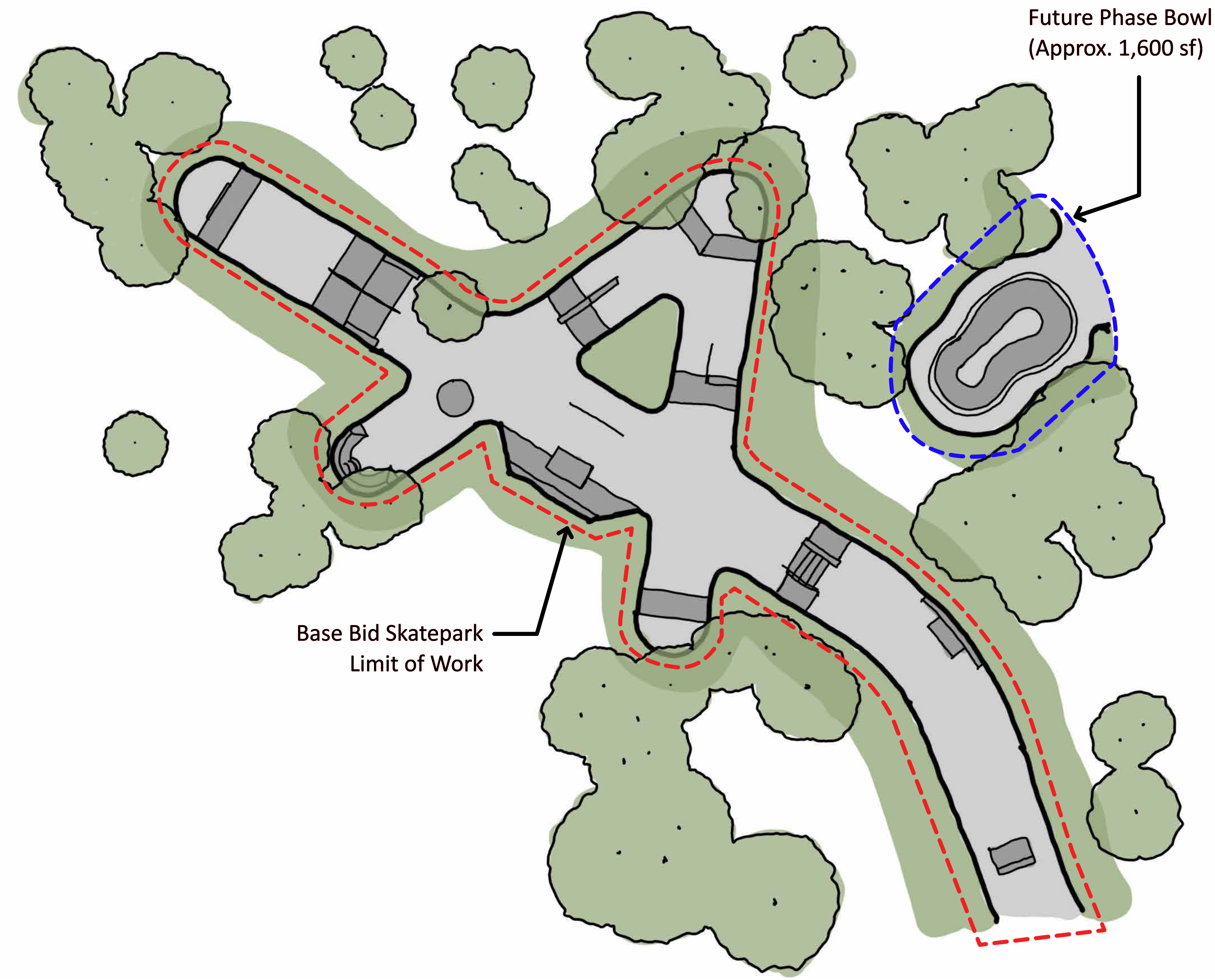
ITEM	ESTIMATED COST
Design Fee	\$65,000
General Conditions	\$110,000
Civil Works	\$140,000
Skatepark Elements (Approx. 10,000 sf)	\$300,000
Clearing and Grubbing	\$37,500
TOTAL	\$652,500
Contingency (10%)	\$72,500

BASE BID TOTAL	\$725,000
----------------	-----------

ALTERNATE ITEMS		
Future Phase Bowl (Approx. 1,600 sf)	\$150,000	
Alternate Skatepark Lighting	\$100,000	
Additional Spectator Plaza/Seating	\$40,000	
Signage	\$5,000	
Trash/Recycling/Bike Rack	\$10,000	
Connection Walkways	\$25,000	

GRAND TOTAL	\$1,055,000
-------------	-------------

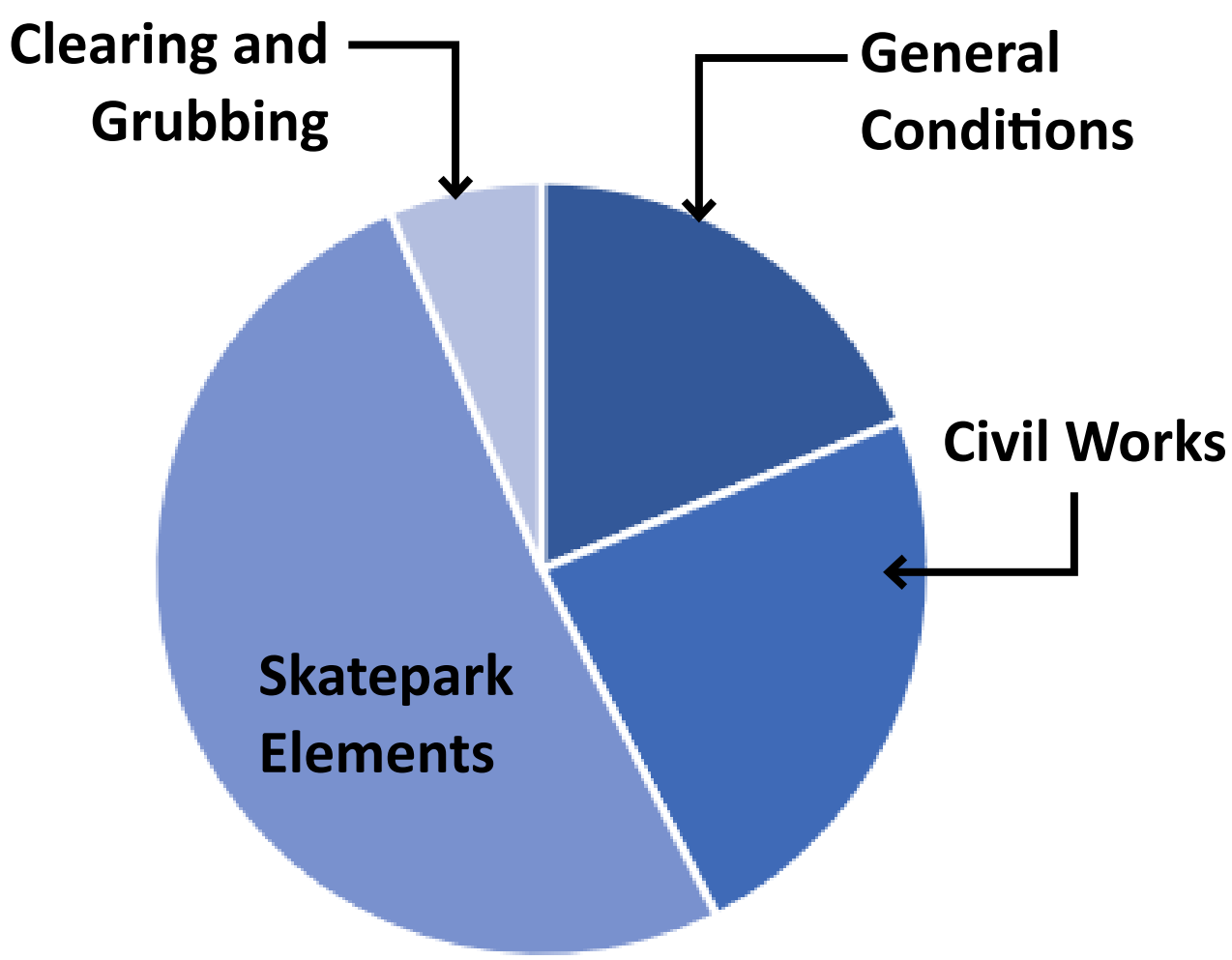
10,000 SF SCHEMATIC CONCEPT WITH ALTERNATE BOWL



KEY ASSUMPTIONS

This estimated cost of construction is based off of the following project assumptions:

- Suitable site soil conditions
- Assuming 1'-0" topsoil removal and replace
- Cedar clearing
- Contractor can stage material and equipment and on site
- Site amenities not included in base bid (park signage, benches, trash cans)
- Skatepark terrain consisting of street plaza terrain with a variety of features for different skill levels
- Skate Park lighting does not include electrical utility service cost
- Site Work and Remediation on any interior planters and exterior landscaping by others



Dripping Springs, TX

June 25, 2021

WWW.NEWLINEKATEPARKS.COM