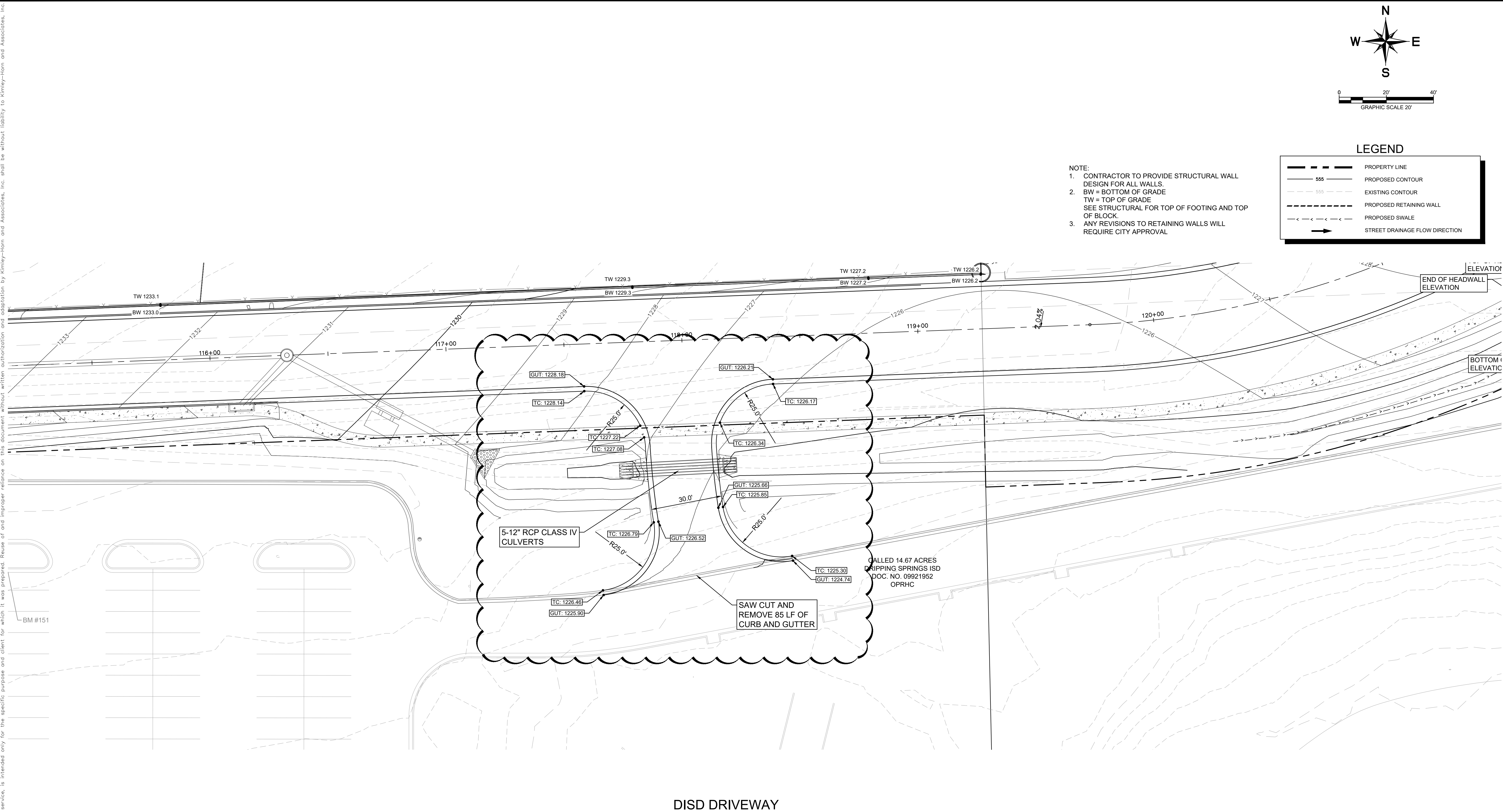


Plotted By:Granados, Alex. Date:November 11, 2021 12:22:17pm File Path:k:\ous_civil\06778317-heritage-mi homes\yoger hanks\yoger hanks\plans\sheet\OVERALL GRADING PLAN.dwg

This document, together with the concepts and designs presented herein, as an instrument of service, is intended only for the specific purpose and client for which it was prepared. Reuse of and improper reliance on this document without written authorization and adaptation by Kimley-Horn and Associates, Inc. shall be without liability to Kimley-Horn and Associates, Inc.



DISD DRIVEWAY



Know what's below.
Call before you dig.

BENCHMARKS

- BM #150 SQUARE CUT SET AT THE BACK OF CURB
• ELEV.= 1229.74' (NAVD '88)
BM #151 SQUARE CUT SET AT THE BACK OF CURB
• ELEV.= 1230.35' (NAVD '88)

No.	REVISIONS	DATE	BY

Kimley»Horn

© 2021 KIMLEY-HORN AND ASSOCIATES, INC.
10814 JOLLYVILLE ROAD, AVALLON IV, SUITE 300, AUSTIN, TX 78759
PHONE: 512-418-1771 FAX: 512-418-791
WWW.KIMLEY-HORN.COM
TEXAS REGISTERED ENGINEERING FIRM F-928

KHA PROJECT 06778317	DATE SEPTEMBER 2021	SCALE AS SHOWN	DRAWN BY: AEG	CHECKED BY: BUB
-------------------------	------------------------	-------------------	------------------	--------------------

DISD DRIVEWAY

ROGER HANKS PARKWAY EXTENSION II CITY OF DRIPPING SPRINGS HAYS COUNTY, TEXAS	SHEET NUMBER
---	--------------