

May 10, 2024

City of Dripping Springs
Dripping Springs Ranch Park
511 Mercer Street
PO Box 384
Dripping Springs, TX 78620



Pruning Damage on Trails at Dripping Springs Ranch Park

To Whom It May Concern,

In May 2024, Bartlett Tree Experts was contacted about potential damage to trees on the trailways located at Dripping Springs Ranch Park. I met Emily Nelson, City Coordinator on-site on March 7, 2024, and walked the trails.. This letter outlines my observations, analysis and recommendations from that meeting.

Numerous trees along the trails were found to be improperly pruned, leaving torn branches or stub cuts. These wounds varied in age, but several were found that were fresh, recent cuts. I was told by the client that the new wounds were the main concern of this visit. My findings are located in the map and table below. Affected tree species included *Juniperus ashei* (juniper), *Quercus virginiana* (live oak), *Ulmus crassifolia* (cedar elm), *Quercus buckleyi* (red oak), and *Diospyros texana* (Texas persimmon). In total, 37 trees were found to have torn branches and 28 were found with stub cuts. These improper pruning practices have left wounds on the tree that should be repaired with proper cuts that allow wound healing. I also found three 4-inch diameter trees to have been recently removed with fresh cuts left on the remaining stumps (#35-37).

Additionally, numerous dead branches and dead trees were found that were overhanging the trail. Extended branches over trail are recommended to be pruned and/or removed. These trees were not inventoried. It was also noted that several large oak trees were dead away from the trail, and these large oak trees were inventoried in the table below (#67-77) . These trees do not warrant removal unless there is a target. Oak wilt is a concern in Hays County and evidence of the disease should be investigated and monitored.

Tree Pruning Recommendations

Tree owners and tree care practitioners should always keep in mind that any pruning cut is a wound to the tree. Informed tree care professionals have learned to manage that wounding to preserve the health, safety, and integrity of the tree. The following pruning practices are recommended:

- Pruning should be done under the supervision of an ISA Certified Arborist.
- Proper pruning tools should be used under the ANSI-300 pruning standard.
- Stub cuts should be corrected.
- Flush cuts should not be allowed.
- Torn and ripped branches should be pruned corrected.

Table 1: Data From Tree Evaluation

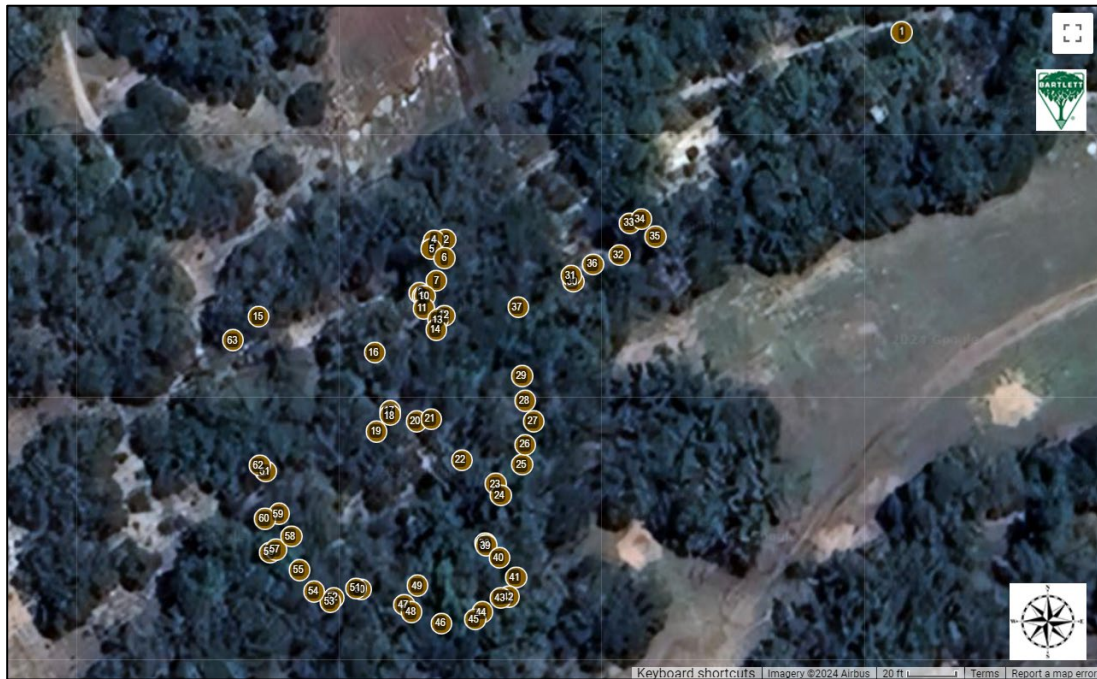
ID	Species	Notes
1	<i>Quercus virginiana</i>	Torn branch
2	<i>Juniperus ashei</i>	Torn branch
3	<i>Juniperus ashei</i>	Torn branch
4	<i>Juniperus ashei</i>	Torn branch
5	<i>Juniperus ashei</i>	Torn branch
6	<i>Juniperus ashei</i>	Torn branch
7	<i>Juniperus ashei</i>	Torn branch
8	<i>Juniperus ashei</i>	Torn branch
9	<i>Juniperus ashei</i>	Torn branch
10	<i>Juniperus ashei</i>	Torn branch
11	<i>Juniperus ashei</i>	Torn branch
12	<i>Juniperus ashei</i>	Torn branch
13	<i>Juniperus ashei</i>	Torn branch
14	<i>Juniperus ashei</i>	Torn branch
15	<i>Juniperus ashei</i>	Torn branch
16	<i>Juniperus ashei</i>	Torn branch
17	<i>Juniperus ashei</i>	Torn branch
18	<i>Juniperus ashei</i>	Stub cut
19	<i>Juniperus ashei</i>	Torn branch
20	<i>Juniperus ashei</i>	Stub cut
21	<i>Juniperus ashei</i>	Stub cut
22	<i>Juniperus ashei</i>	Torn branch
23	<i>Juniperus ashei</i>	Torn branch
24	<i>Juniperus ashei</i>	Torn branch
25	<i>Juniperus ashei</i>	Torn branch
26	<i>Juniperus ashei</i>	Torn branch
27	<i>Juniperus ashei</i>	Stub cut
28	<i>Juniperus ashei</i>	Stub cut
29	<i>Juniperus ashei</i>	Stub cut
30	<i>Ulmus crassifolia</i>	Stub cut
31	<i>Juniperus ashei</i>	Stub cut
32	<i>Juniperus ashei</i>	Stub cut
33	<i>Ulmus crassifolia</i>	Stub cut
34	<i>Juniperus ashei</i>	Stub cut
35	<i>Quercus virginiana</i>	Removed
36	<i>Juniperus ashei</i>	Removed
37	<i>Juniperus ashei</i>	Removed
38	<i>Juniperus ashei</i>	Stub cut
39	<i>Juniperus ashei</i>	Stub cut

ID	Species	Notes
40	<i>Juniperus ashei</i>	Stub cut
41	<i>Juniperus ashei</i>	Stub cut
42	<i>Juniperus ashei</i>	Stub cut
43	<i>Juniperus ashei</i>	Stub cut
44	<i>Juniperus ashei</i>	Stub cut
45	<i>Juniperus ashei</i>	Stub cut
46	<i>Juniperus ashei</i>	Stub cut
47	<i>Juniperus ashei</i>	Torn branch
48	<i>Juniperus ashei</i>	Torn branch
49	<i>Quercus virginiana</i>	Torn branch
50	<i>Quercus virginiana</i>	Torn branch
51	<i>Quercus virginiana</i>	Torn branch
52	<i>Quercus virginiana</i>	Torn branch
53	<i>Quercus virginiana</i>	Torn branch
54	<i>Quercus virginiana</i>	Torn branch
55	<i>Diospyros texana</i>	Torn branch, but already dead
56	<i>Quercus buckleyi</i>	Stub cut
57	<i>Juniperus ashei</i>	Torn branch
58	<i>Juniperus ashei</i>	Torn branch
59	<i>Juniperus ashei</i>	Stub cut
60	<i>Juniperus ashei</i>	Torn branch
61	<i>Juniperus ashei</i>	Stub cut
62	<i>Juniperus ashei</i>	Stub cut
63	<i>Juniperus ashei</i>	Torn branch
64	<i>Juniperus ashei</i>	Stub cut
65	<i>Juniperus ashei</i>	Stub cut
66	<i>Juniperus ashei</i>	Stub cut
67	<i>Quercus virginiana</i>	Dead
68	<i>Quercus virginiana</i>	Dead
69	<i>Quercus virginiana</i>	Dead
70	<i>Quercus virginiana</i>	Dead
71	<i>Quercus virginiana</i>	Dead
72	<i>Quercus virginiana</i>	Dead
73	<i>Quercus virginiana</i>	Dead
74	<i>Quercus virginiana</i>	Dead
75	<i>Quercus virginiana</i>	Dead
76	<i>Quercus virginiana</i>	Dead
77	<i>Quercus virginiana</i>	Dead
78	<i>Juniperus ashei</i>	Torn branch
79	<i>Juniperus ashei</i>	Stub cut

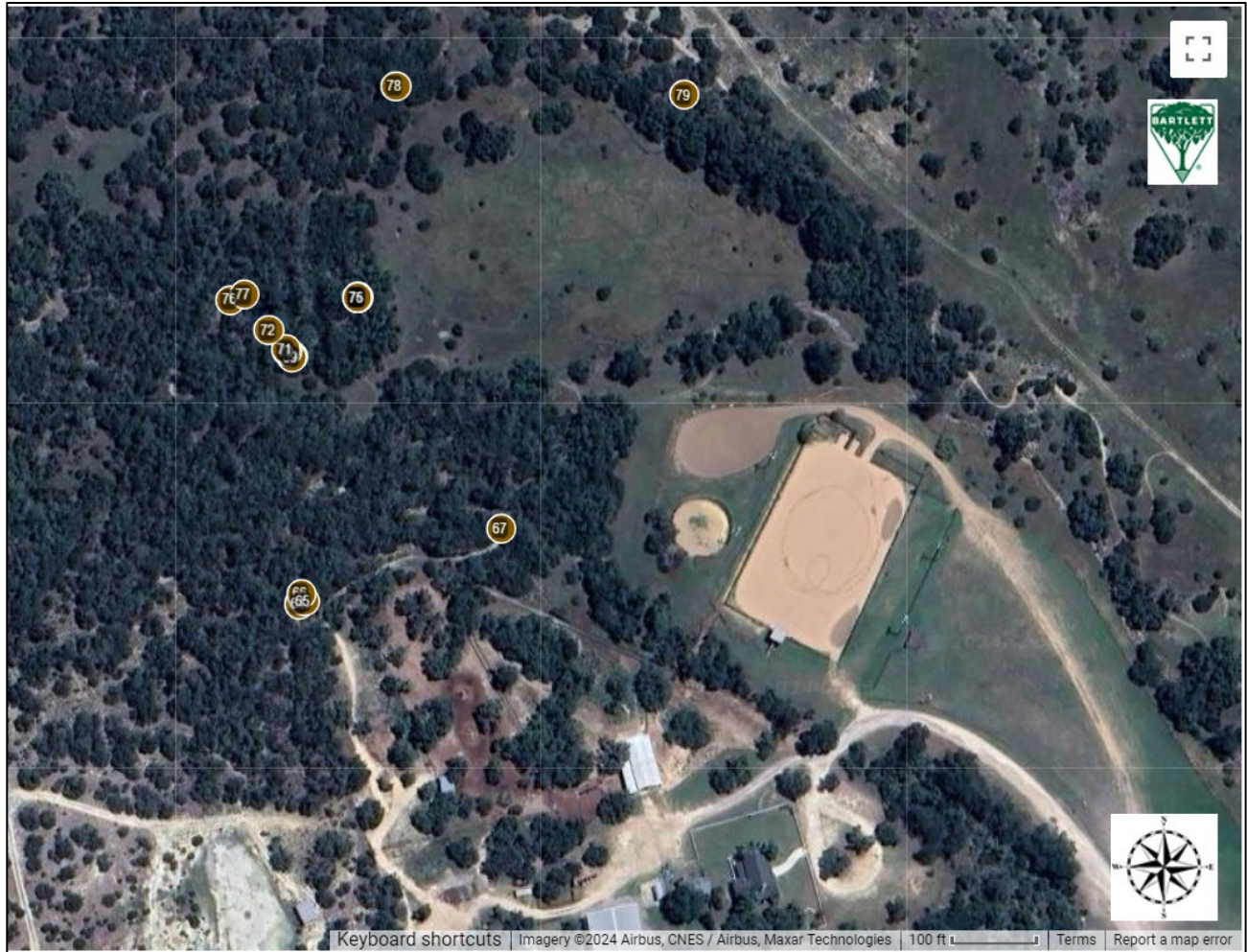
Location Maps of Trees Evaluated



Map 1. The southern portion of the property.



Map 2. Enlarged version of the southern portion of the property.



Map 3. The northern portion of the property.

Photographs



Photo 1. Example of a proper pruning cut that was found on site.



Photo 2. Example of a pruning cut on site that is in the process of healing but creating new tissue around the wound.



Photo 3. Example of an improper flush cut that should not be performed (image not taken from site).



Photo 4. An improper fresh stub cut that was found on site. The proper cut should be made at the yellow line.



Photo 5. An old stub cut that was found at the site. The proper cut should be made at the yellow line where the stub meets the live stem.



Photo 6. A tearing wound that should be cleanly pruned at the yellow line. Proper pruning tools would avoid wounds exhibited in this photograph.



Photo 7. Pruning cuts were found on branches that were dead. The entire dead branch should be removed.



Photo 8. One of three 4" diameter trees that was recently removed.



Photo 9. A large live oak was found with tearing cuts on two dead branches. These branches should be cut back to the live stem with a proper pruning cut. The pruning cut should be painted.



Photo 10. Dead trees over walkways should be removed.



Photo 11. Dead branches over walkways should be removed.

If you have any questions about my observations or recommendations, please contact me.

K. Sloan

K. Sloan
Certified Arborist TX-4727A
ISA Tree Risk Assessment Qualified
ksloan@bartlett.com

Limits of the Assignment

The tree assessment was performed from the ground for visual conditions. This tree inventory was not a tree risk assessment. As such, no trees were assessed for risk in accordance with industry standards, nor are there any tree risk ratings or risk mitigation recommendations provided within this report.

Care has been taken to obtain all information from reliable sources. All data has been verified insofar as possible; however, the consultant can neither guarantee nor be responsible for the accuracy of information provided by others.

Illustrations, diagrams, graphs, and photographs in this report, being intended as visual aids, are not necessarily to scale and should not be construed as engineering or architectural reports or surveys.

Information contained in this report covers only those items that were examined and reflects the condition of those items at the time of inspection. There is no warranty or guarantee, expressed or implied, that problems or deficiencies of the plans or property in question may not arise in the future.

There is no guarantee for the preservation of the trees contained in this report, however, the preservation plan is made with the best interest intended for the trees being preserved.