

CITY OF DRIPPING SPRINGS

Park System Signage Phase 2: Sports & Recreation Park

Design Documentation

December 2023

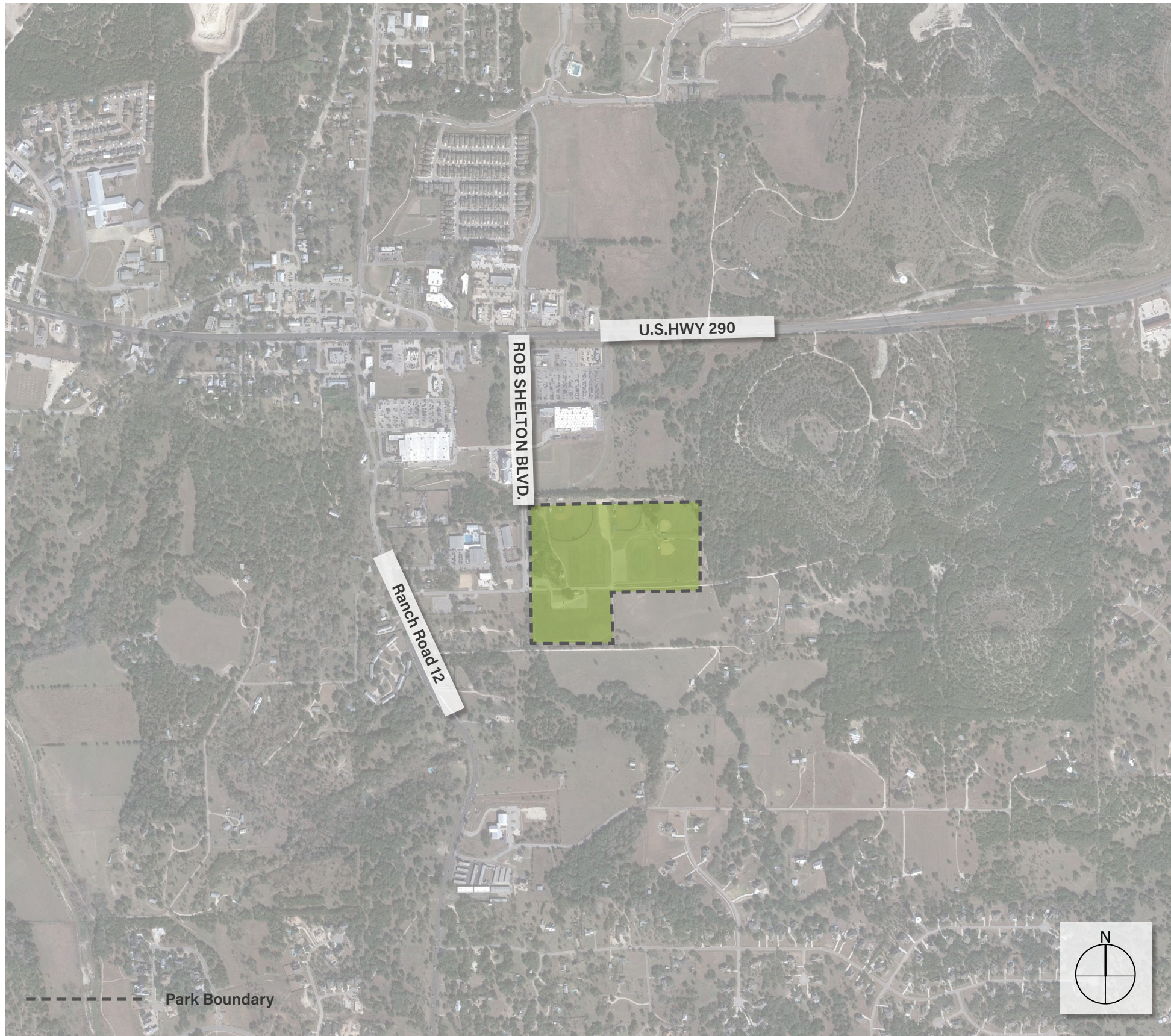
CONTENTS

Key Map
Existing Signage Inventory
Proposed Signage Locations
Proposed Signage Concepts
Existing Sign Inventory Photo Array



CLIENT
City of Dripping Springs
511 Mercer Street
Dripping Springs, Texas 78620

DESIGN TEAM
Studio16:19
305 W. Liberty Ave, Suite 100
Round Rock, TX 78664



Dripping Springs Key Map

Disclaimer:
 This document represents design progress and its provision, either electronic or hard copy, is to communicate design intent only. Original and published work may not be duplicated, used, or disclosed without the written consent of Studio16:19.



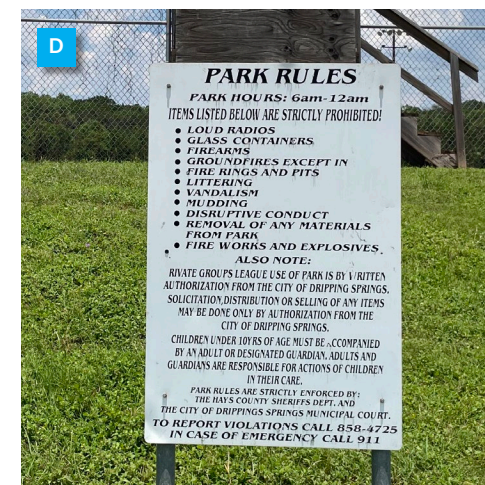
ENTRANCE MONUMENT SIGN (1)



INFO KIOSK (1)



TRAIL MARKERS (3)



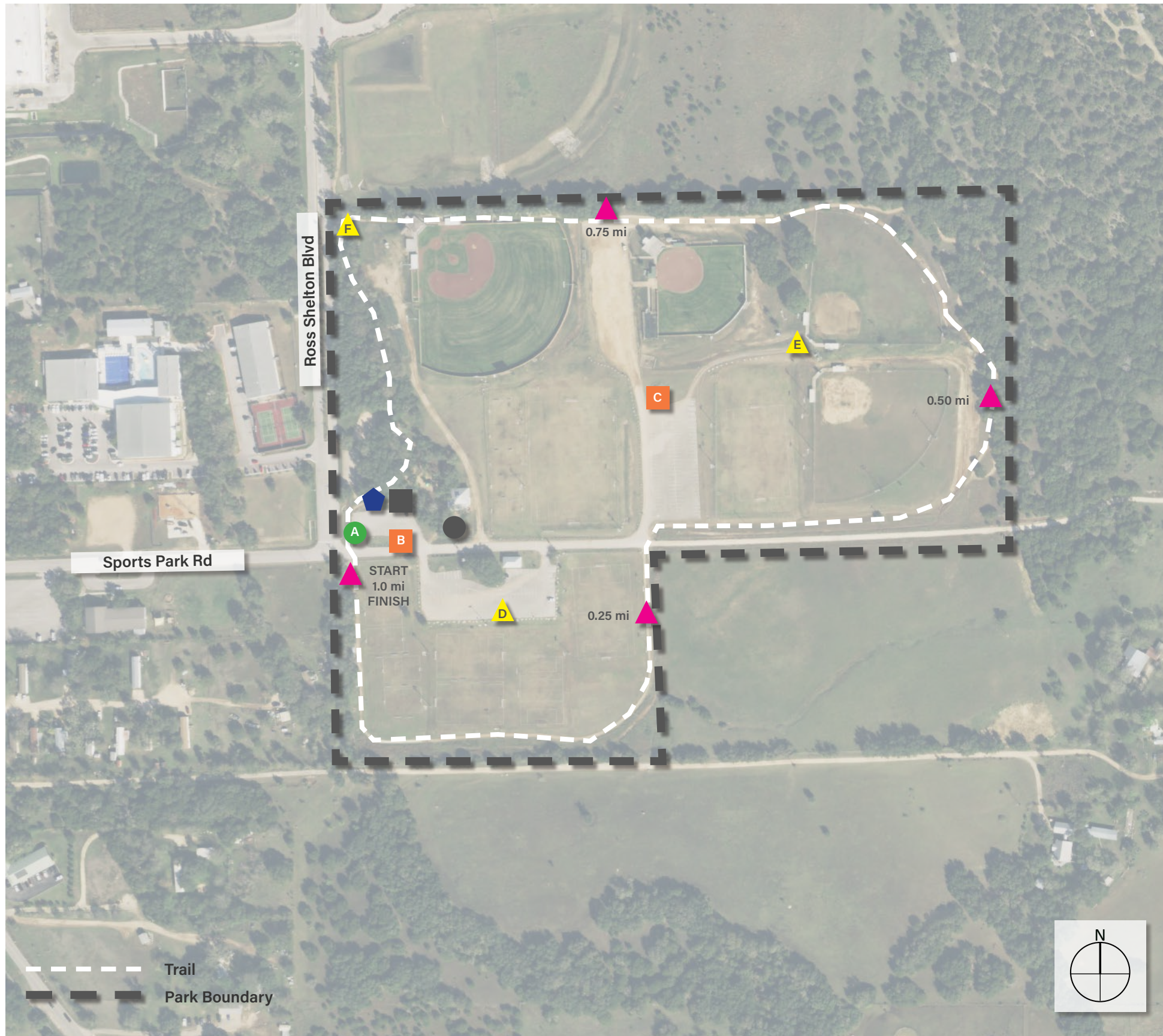
PARK RULES/INFO SIGN (2)



MARKER (1)

Sports & Recreation Park - Existing Signage Inventory (Quantity)

Disclaimer:
 This document represents design progress and its provision, either electronic or hard copy, is to communicate design intent only. Original and published work may not be duplicated, used, or disclosed without the written consent of Studio16:19.

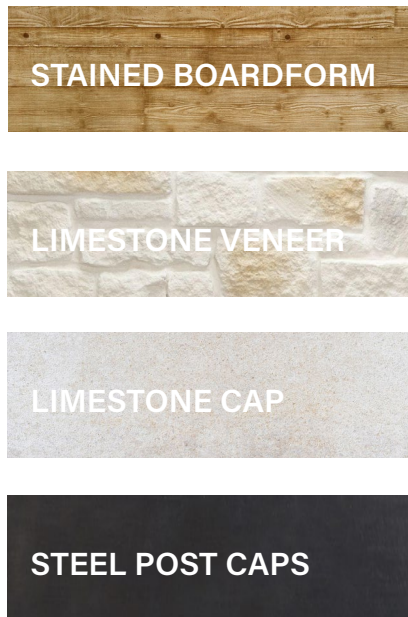


- Replacement Vehicular Identification Sign (1)**
 - A. Primary Identification
- Proposed Large Vehicular Wayfinding Sign (2)**
 - B. Playground
 - Basketball/Volleyball Courts
 - Soccer Fields #1-5
 - Soccer Fields #6-7
 - Baseball/Softball Fields
- Proposed Pedestrian Info/Kiosk Sign (1)**
- ▲ Proposed Pedestrian Directional Sign (3)**
 - D. Park Rules
 - Soccer Fields Wayfinding
- ▲ Proposed Pedestrian Directional Sign (3)**
 - E. Park Rules
 - Softball Field Wayfinding
- ▲ Proposed Pedestrian Directional Sign (3)**
 - F. Picnic Area
 - Concession Stand
 - Baseball/Softball Fields
 - Restrooms
 - Playground
- ▲ Proposed Small Pedestrian Trail Marker (4)**
- Existing Sign to Remain (1)**
- Existing Monument Sign Relocation (1)**

Sports & Recreation Park - Proposed Signage Locations (Quantity)

Disclaimer:
This document represents design progress and its provision, either electronic or hard copy, is to communicate design intent only. Original and published work may not be duplicated, used, or disclosed without the written consent of Studio16:19.

MATERIALS

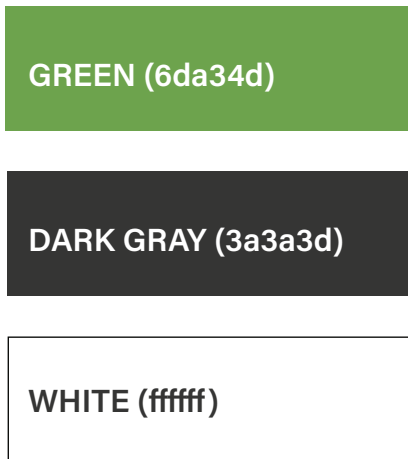


- ① 1/2" THICK IZONE IMAGING MESSAGE PANEL, PER MANUFACTURER'S SPECIFICATIONS
- ② 5"x5" INTEGRAL COLOR BOARDFORM CONCRETE POST, BUTTERFIELD COLOR: GAUNTLET GRAY OR EQUIVALENT
- ③ CONCRETE FOOTER BY SIGN FABRICATOR STRUCTURAL DESIGN
- ④ CMU CORE BASE WITH WHITE LEUDERS LIMESTONE VENEER
- ⑤ STEEL POST CAP, POWDERCOAT BLACK SATIN
- ⑥ 5/16" GALVANIZED HEX BOLTS, PANEL MOUNTED INTO POST CHANNELS.
- ⑦ 2" CUT LIMESTONE CAP TO MATCH LIMESTONE VENEER
- ⑧ 7" FLAT CUT PIN MOUNTED LETTERS, 1/4" THICK ALUMINUM, COLOR TO MATCH IZONE DARK GREY
- ⑧ FINISH GRADE, TYP.

1 VEHICULAR IDENTIFICATION SIGNAGE

SCALE: 3/8" = 1'-0"

IZONE PANEL COLORS



- ① 1/2" THICK IZONE IMAGING MESSAGE PANEL, PER MANUFACTURER'S SPECIFICATIONS
- ② 5"x5" INTEGRAL COLOR BOARDFORM CONCRETE POST, BUTTERFIELD COLOR U10 SONORAN TAN OR EQUIVALENT
- ③ CONCRETE FOOTER BY SIGN FABRICATOR STRUCTURAL DESIGN
- ④ CMU CORE BASE WITH TAN LEUDERS LIMESTONE VENEER
- ⑤ STEEL POST CAP, POWDERCOAT BLACK SATIN
- ⑥ 5/16" GALVANIZED HEX BOLTS, PANEL MOUNTED INTO POST CHANNELS.
- ⑦ 2" CAST STONE CAP TO MATCH LIMESTONE VENEER
- ⑧ FINISH GRADE, TYP.

FONT:

Futura PT: Medium

ABCDEFGHIJKLMNOPQRSTUVWXYZ
abcdefghijklmnopqrstuvwxyz
1234567890

2 VEHICULAR IDENTIFICATION SIGNAGE

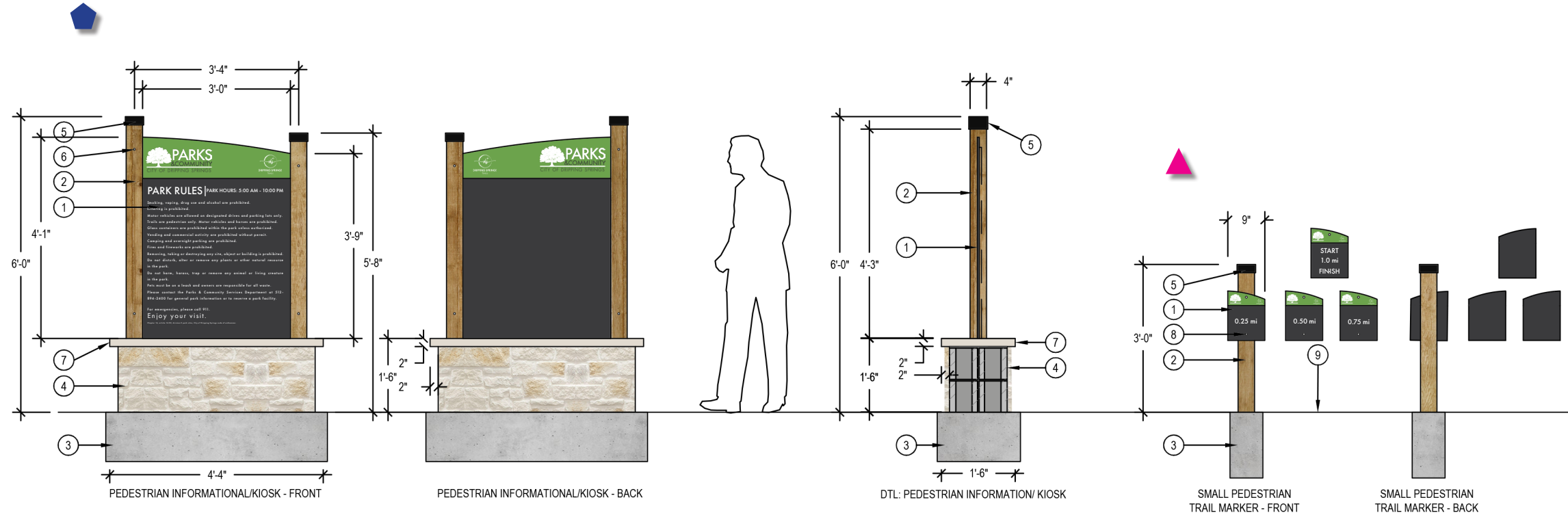
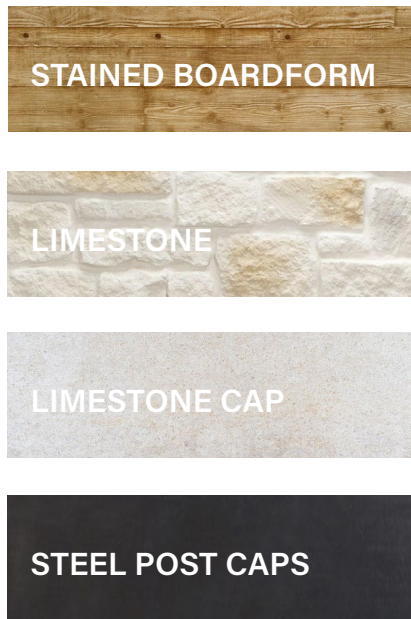
SCALE: 3/8" = 1'-0"

Note: Contractor to provide signed and sealed professional engineering documents for all sign foundations and footings, to be reviewed and approved by the City Engineer. Contractor to include all engineering related costs in statement of bid. Prior to sign installation, contractor shall field locate and stake sign locations for review and approval by the City Engineer.

Disclaimer: This document represents design progress and its provision, either electronic or hard copy, is to communicate design intent only. Original and published work may not be duplicated, used, or disclosed without the written consent of Studio16:19.

Sports & Recreation Park Signage

MATERIALS

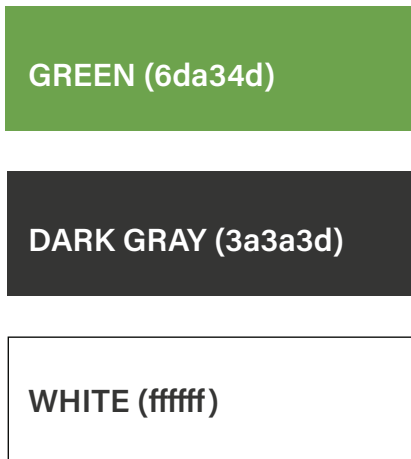


- ① 1/2" THICK IZONE IMAGING MESSAGE PANEL, PER MANUFACTURER'S SPECIFICATIONS
- ② 5"x5" INTEGRAL COLOR BOARDFORM CONCRETE POST, BUTTERFIELD COLOR U10 SONORAN TAN OR EQUIVALENT
- ③ CONCRETE FOOTER BY SIGN FABRICATOR STRUCTURAL DESIGN
- ④ CMU CORE BASE WITH TAN LEUDERS LIMESTONE VENEER
- ⑤ STEEL POST CAP, POWDERCOAT BLACK SATIN
- ⑥ 5/16" GALVANIZED HEX BOLTS, PANEL MOUNTED INTO POST CHANNELS
- ⑦ 2" CAST STONE CAP TO MATCH LIMESTONE VENEER
- ⑧ 1/4" X 2" SECURITY SLEEVE ANCHOR
- ⑨ FINISH GRADE, TYP.

1 PEDESTRIAN IDENTIFICATION SIGNAGE

SCALE: 3/8" = 1'-0"

IZONE PANEL COLORS



- ① 1/2" THICK IZONE IMAGING MESSAGE PANEL, PER MANUFACTURER'S SPECIFICATIONS
- ② 5"x5" INTEGRAL COLOR BOARDFORM CONCRETE POST, BUTTERFIELD COLOR U10 SONORAN TAN OR EQUIVALENT
- ③ CONCRETE FOOTER BY SIGN FABRICATOR STRUCTURAL DESIGN
- ④ CMU CORE BASE WITH TAN LEUDERS LIMESTONE VENEER
- ⑤ STEEL POST CAP, POWDERCOAT BLACK SATIN
- ⑥ 1/4" X 2" SECURITY SLEEVE ANCHOR
- ⑦ 2" CAST STONE CAP TO MATCH LIMESTONE VENEER
- ⑧ FINISH GRADE, TYP.

2 PEDESTRIAN IDENTIFICATION SIGNAGE

SCALE: 3/8" = 1'-0"

FONT:

Futura PT: Medium

ABCDEFGHIJKLMNOPQRSTUVWXYZ
 abcdefghijklmnopqrstuvwxyz
 1234567890

Note: Contractor to provide signed and sealed professional engineering documents for all sign foundations and footings, to be reviewed and approved by the City Engineer. Contractor to include all engineering related costs in statement of bid. Prior to sign installation, contractor shall field locate and stake sign locations for review and approval by the City Engineer.

Disclaimer: This document represents design progress and its provision, either electronic or hard copy, is to communicate design intent only. Original and published work may not be duplicated, used, or disclosed without the written consent of Studio16:19.

Sports & Recreation Park Signage



SPORTS & REC. PARK
ENTRANCE MONUMENT SIGN



SPORTS & REC. PARK
INFO KIOSK



SPORTS & REC. PARK
INFO SIGN



SPORTS & REC. PARK
INFO MONUMENT (TO REMAIN)



SPORTS & REC. PARK
MILE MARKER 0.00



SPORTS & REC. PARK
MILE MARKER 0.25



SPORTS & REC. PARK
MILE MARKER 0.25

Appendix: Sign Inventory Photo Array for Reference

Disclaimer:
This document represents design progress and its provision, either electronic or hard copy, is to communicate design intent only. Original and published work may not be duplicated, used, or disclosed without the written consent of Studio16:19.