



SKATEPARK AT FOUNDERS PARK

DRIPPING SPRINGS, TX

CITY COUNCIL WORKSHOP & REGULAR MEETING | AUGUST 15, 2023

Final Concept

This design includes **technical street** terrain with a triangular flow around a central pyramid with a push style skate-path entry lane. The design includes terrain that mimic skate features found in the urban realm, which gives an **authentic feel** of Street Skateboarding. Zones within each lane accommodate different user speeds and are complemented by appropriate **staging and spectating** areas.

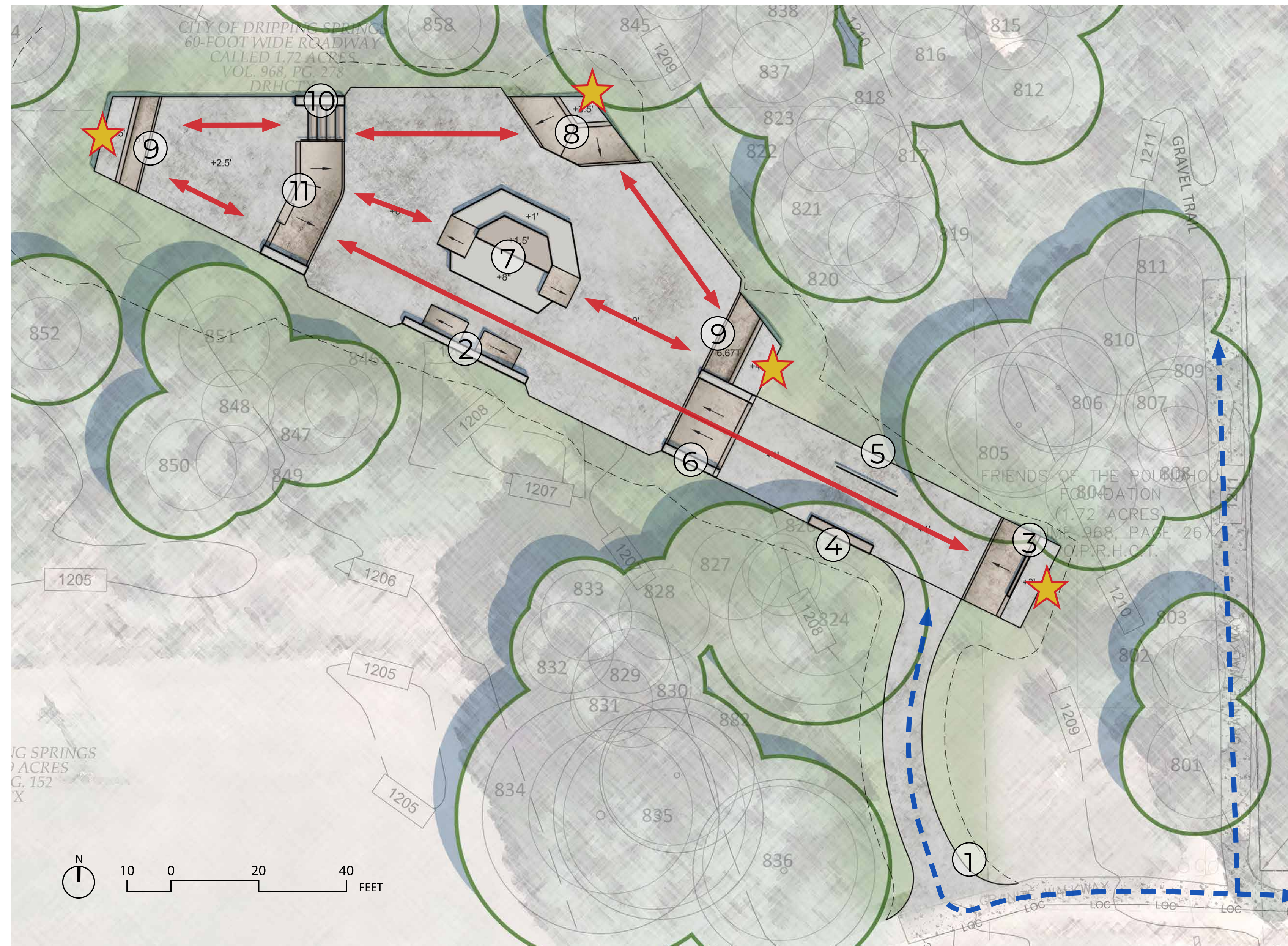
- Pedestrian Circulation
- Rider Circulation
- Staging Area

Site Plan Legend

- ① Main Entrance Connection to Parking Lot
- ② Bank to Bank with Ledge
- ③ Bank to Curb
- ④ Various Height Ledges
- ⑤ Round Flat Bar
- ⑥ Lot 11 Bank with Rail & Ledges
- ⑦ Center Multi-Banked Feature
- ⑧ Banked Hip
- ⑨ Transition Ramp
- ⑩ 5-Stair w/ Hubba & Handrail
- ⑪ Bank w/ Euro Gap

Skatepark features are schematic and will be modified based on community input, project budget and geotechnical findings. The current design is schematic to represent the intended terrain style within the project scope.

Conceptual Site Plan (Base Skatepark Scope)



Bonita Springs Skate Park
Bonita Springs, FL



Brea Skate Park
Brea, CA



Fire Station Skate Plaza
Fort Worth, TX

Example Terrain Photos

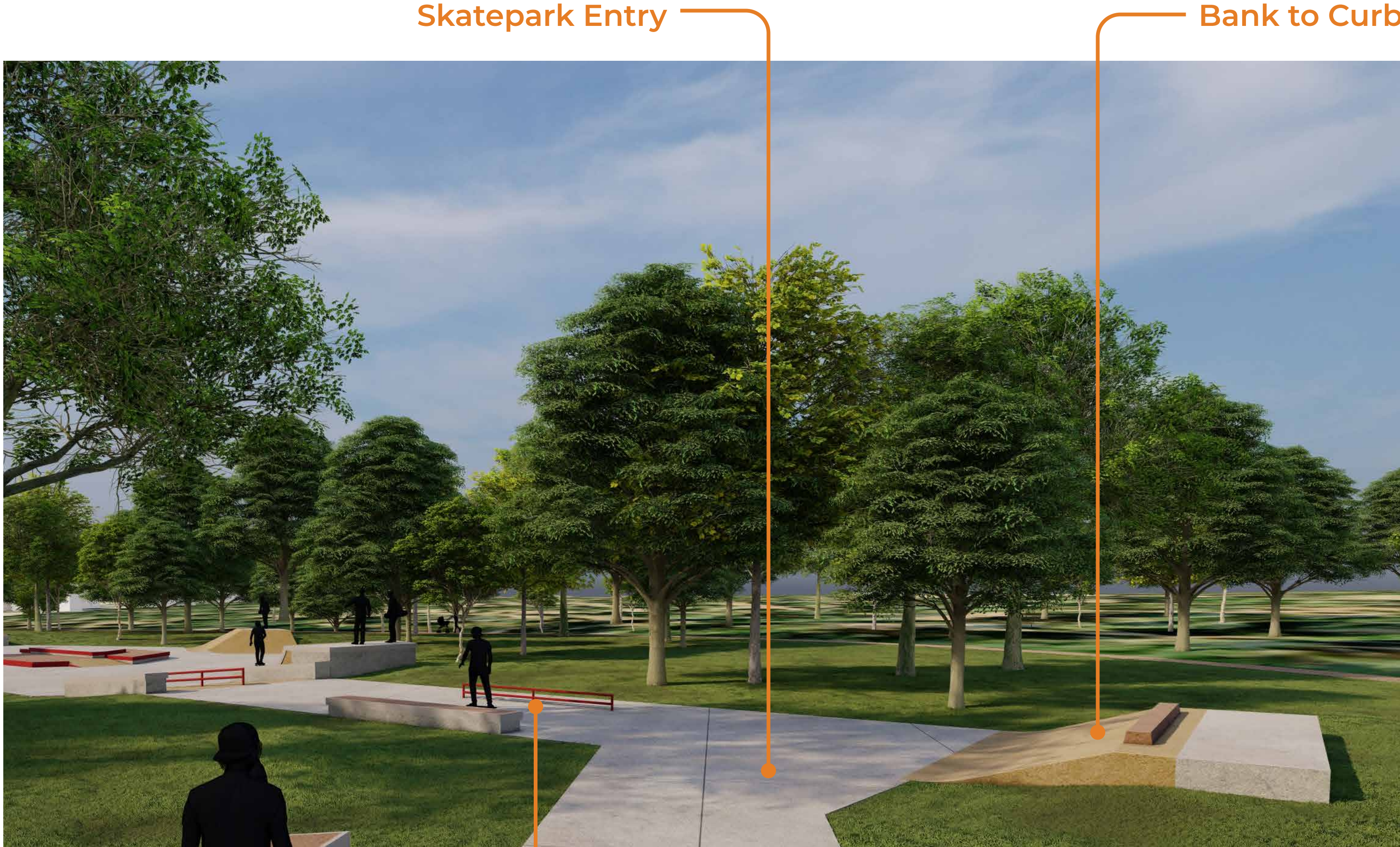


Washington Park Skate Spot (Escondido Skate Spot)
Escondido, CA



Gaylord Sackler Memorial Skate Park
Austin, TX

Conceptual Design 3D Renderings



Skatepark Entry

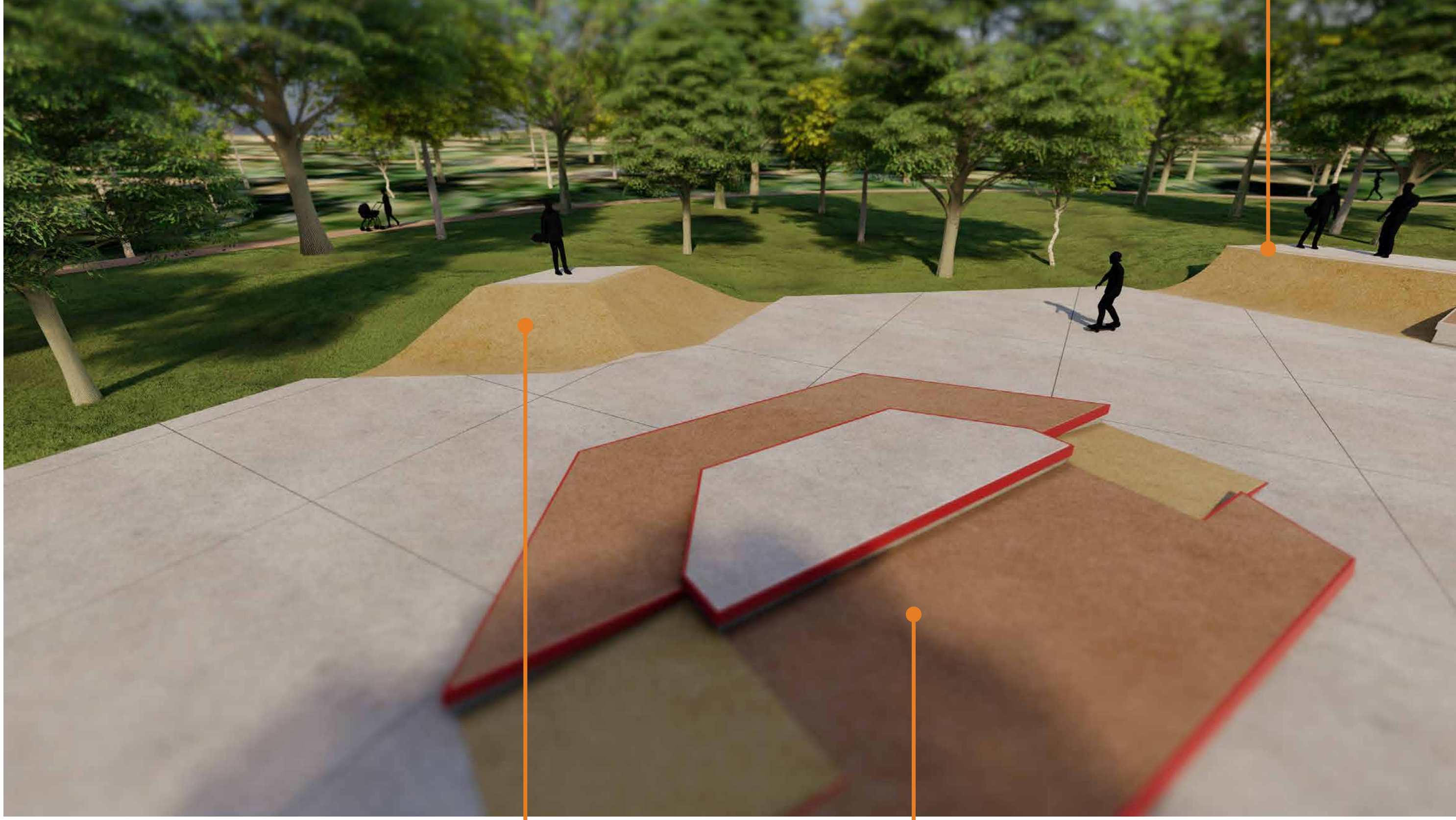
Bank to Curb

Flatbar



Transition Ramp

Round Flat Bar



Transition Ramp

Banked Hip

Center Island Technical Street Feature

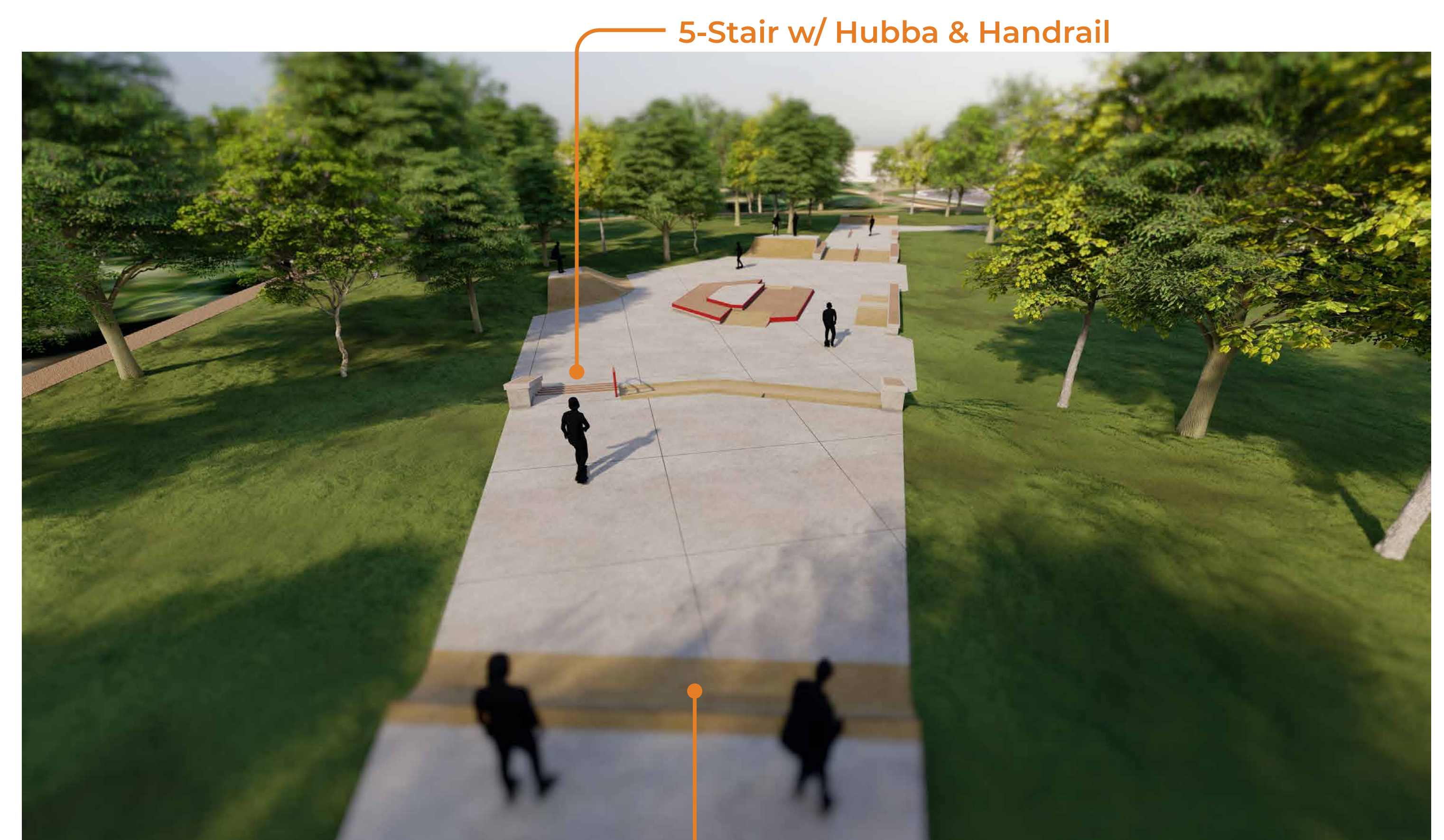
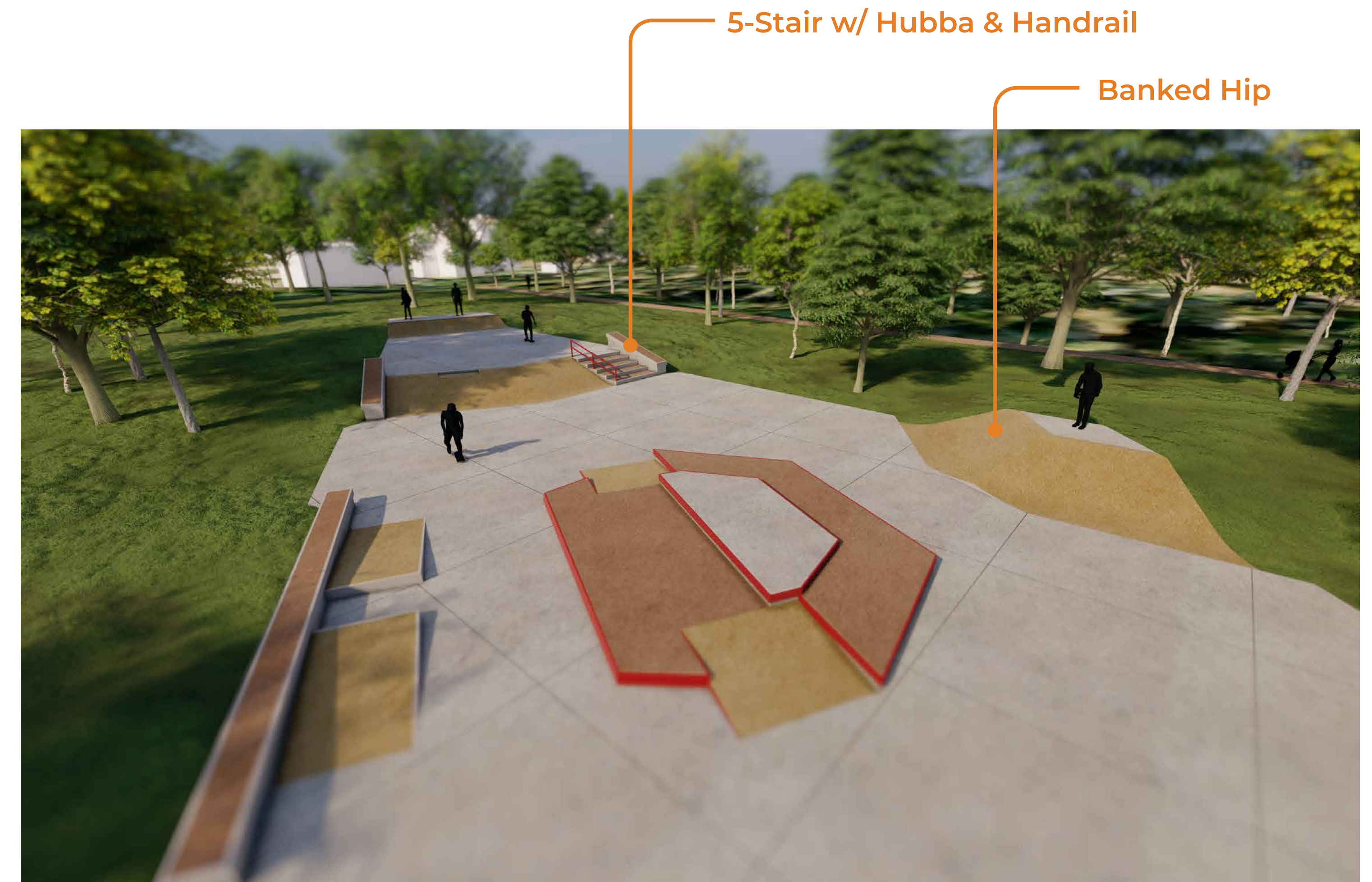


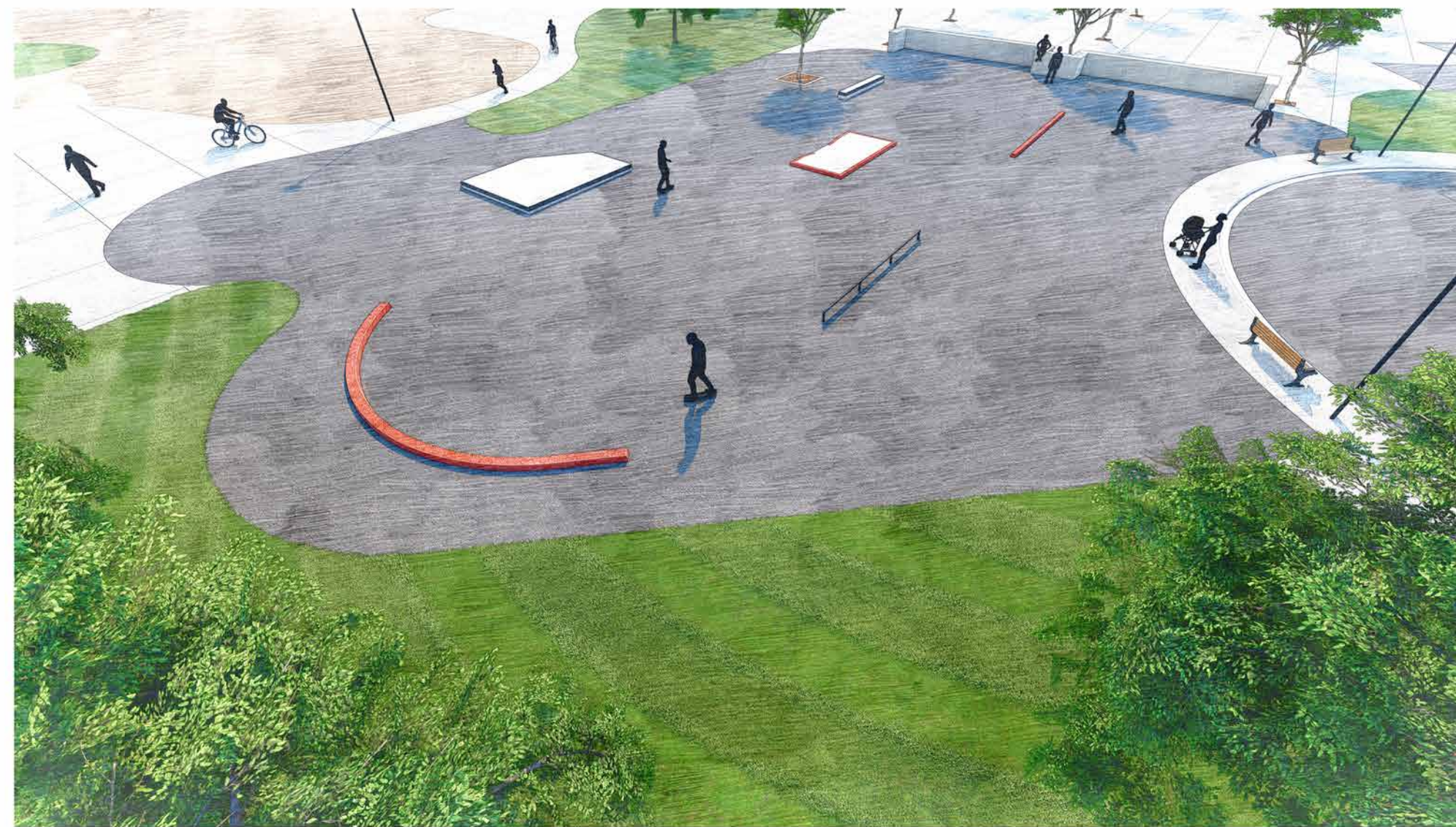
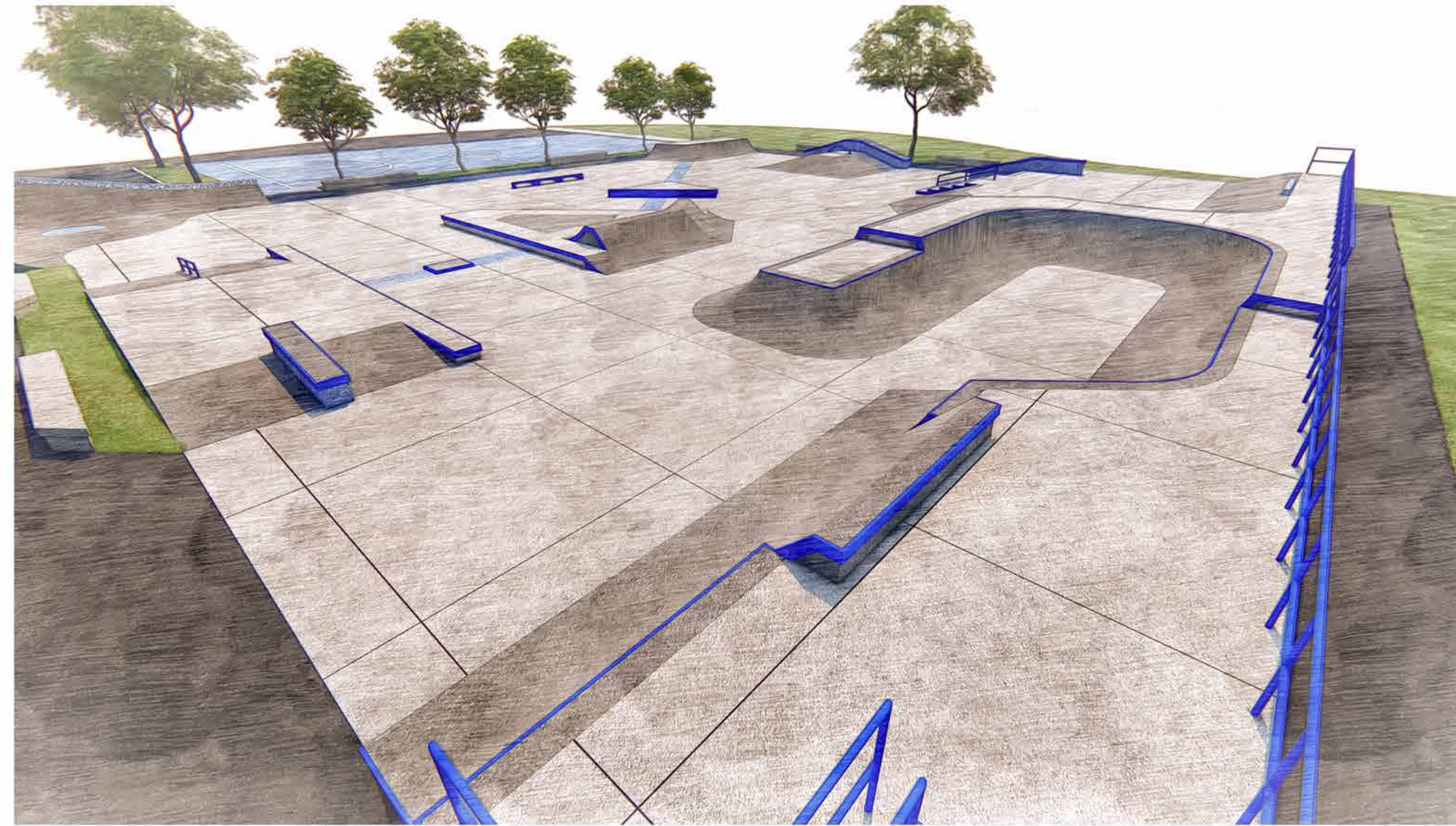
Bank to Curb

Bank w/ Hubbas and Down Rail

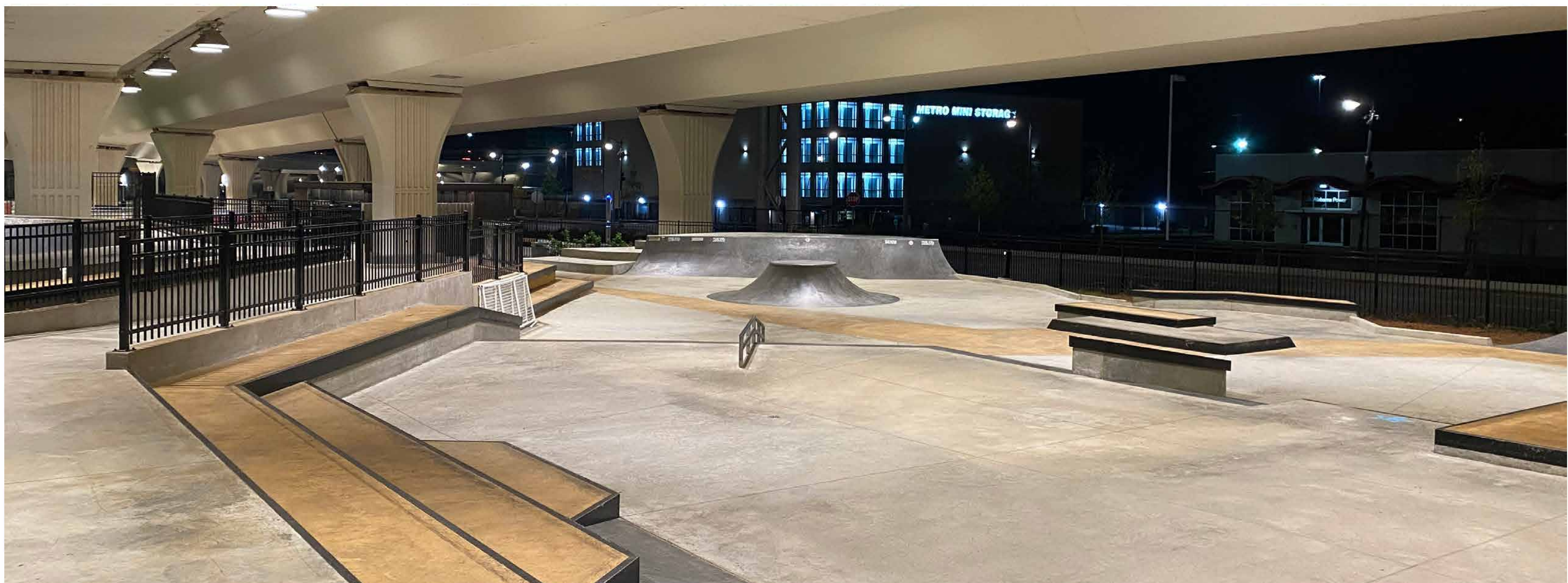
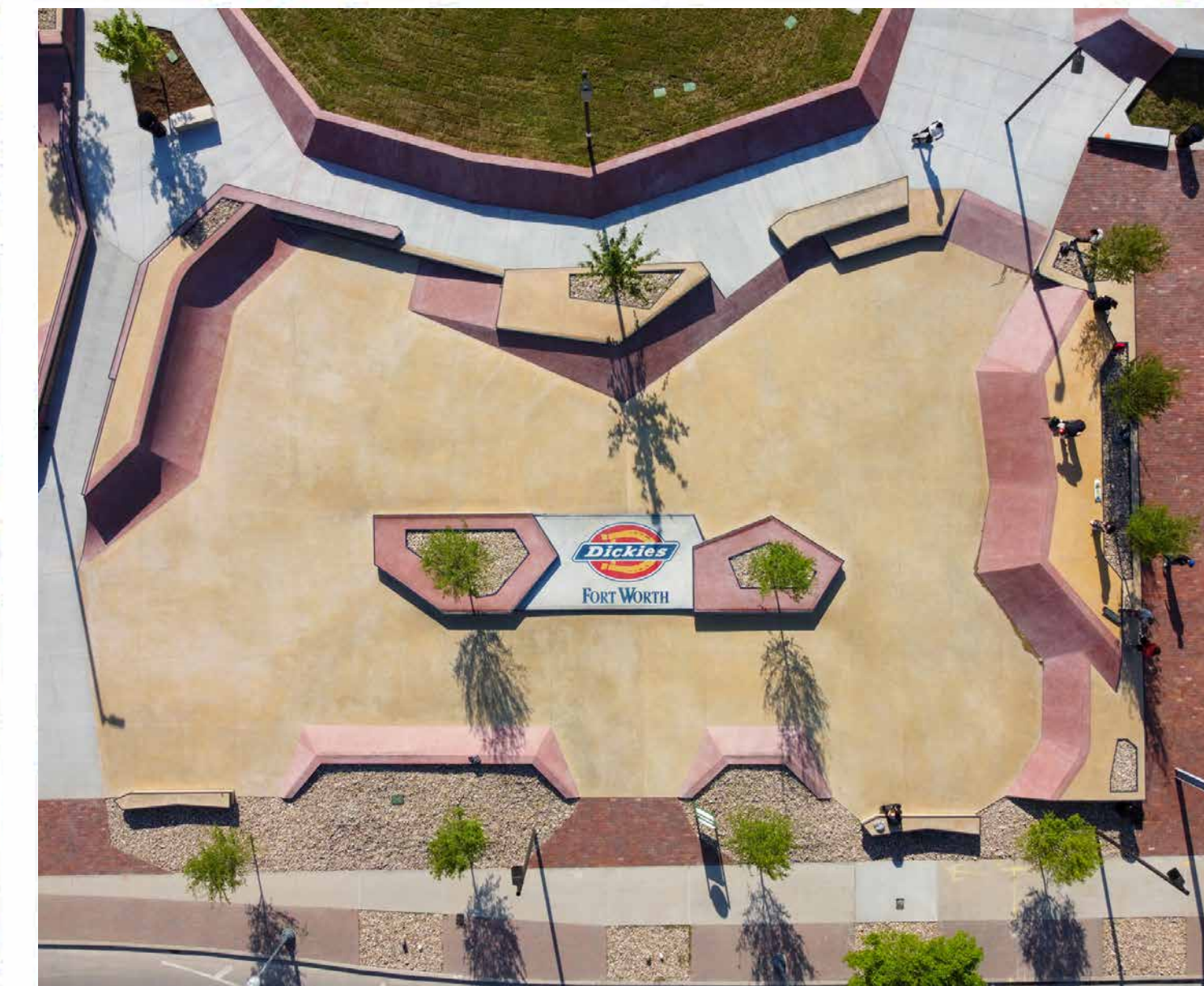
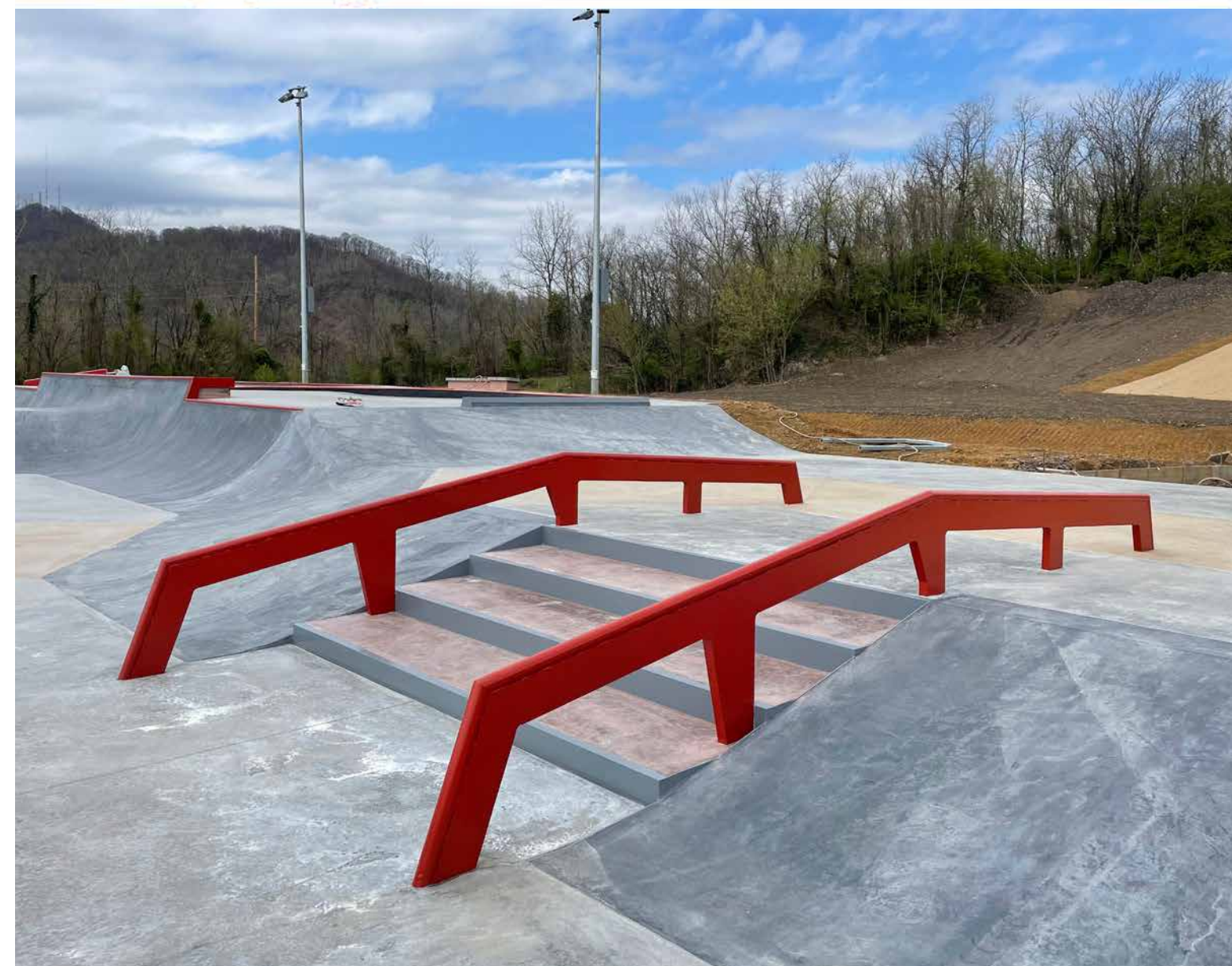


Conceptual Design 3D Renderings





PRECEDENT IMAGES - RENDERINGS



PRECEDENT IMAGES - BUILT WORK

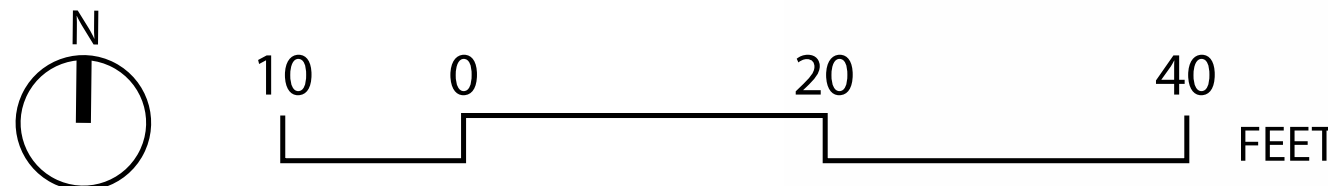
Conceptual Site Plan with Potential Amenities

Site Plan Legend

- ① Skatepark - Central Area
- ② Skatepark - Entry Lane
- ③ Skatepark - Elevated Deck
- ④ Notched Seating Areas*
- ⑤ Pedestrian Access Pathway
- ⑥ Picnic/Seating Area*
- ⑦ Low Elevated Walk Over Tree Rootzone*
- ⑧ Shade Structure*
- ⑨ Entry Plaza / Spectator Area*
- ⑩ Existing Trees to Remain
- ⑪ Connection to Existing Pathway

* Items indicated are optional amenities in addition to base skatepark scope see page 12 for more information

Skatepark features are schematic and will be modified based on community input, project budget and geotechnical findings. The current design is schematic to represent the intended terrain style within the project scope.





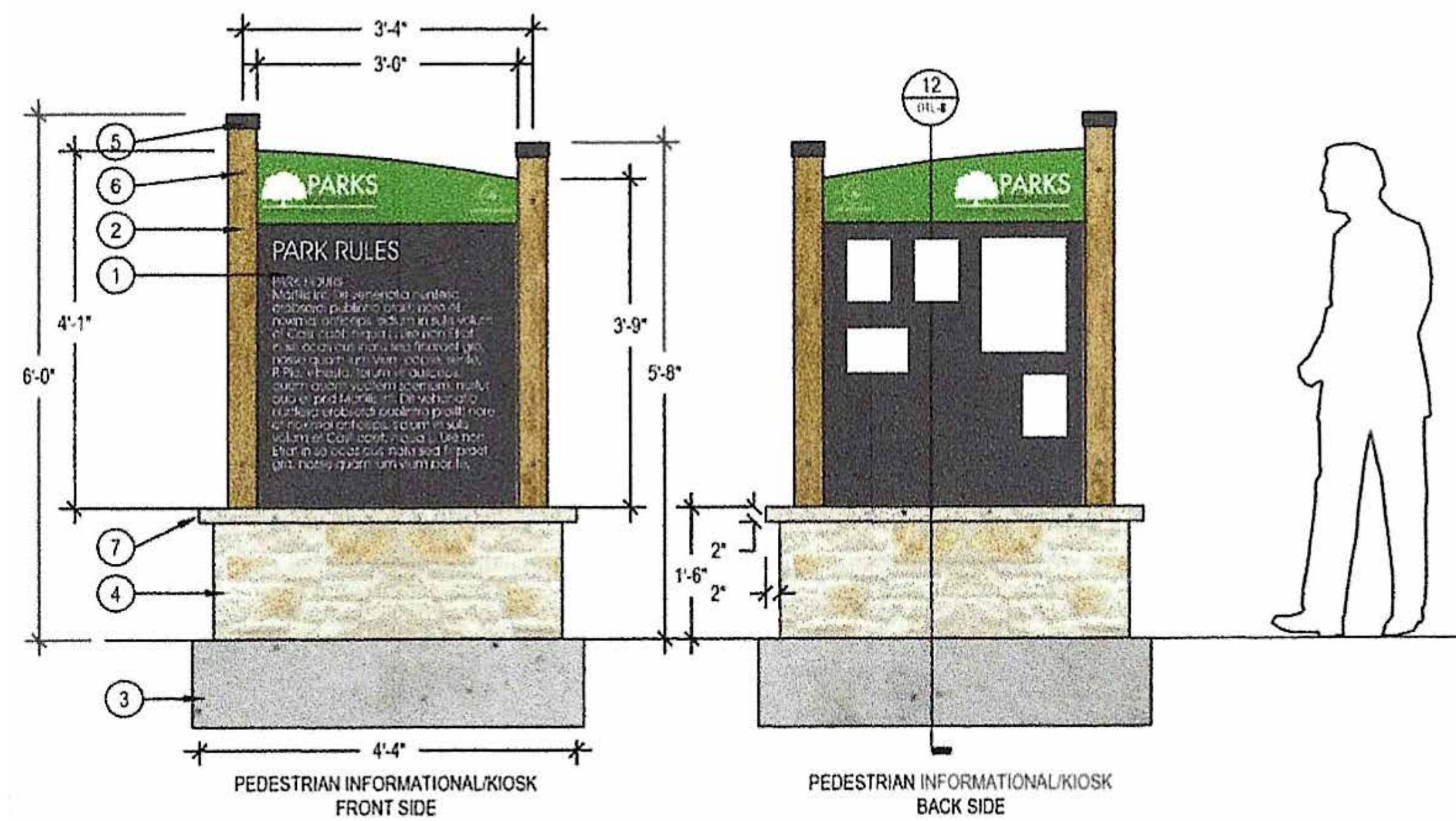
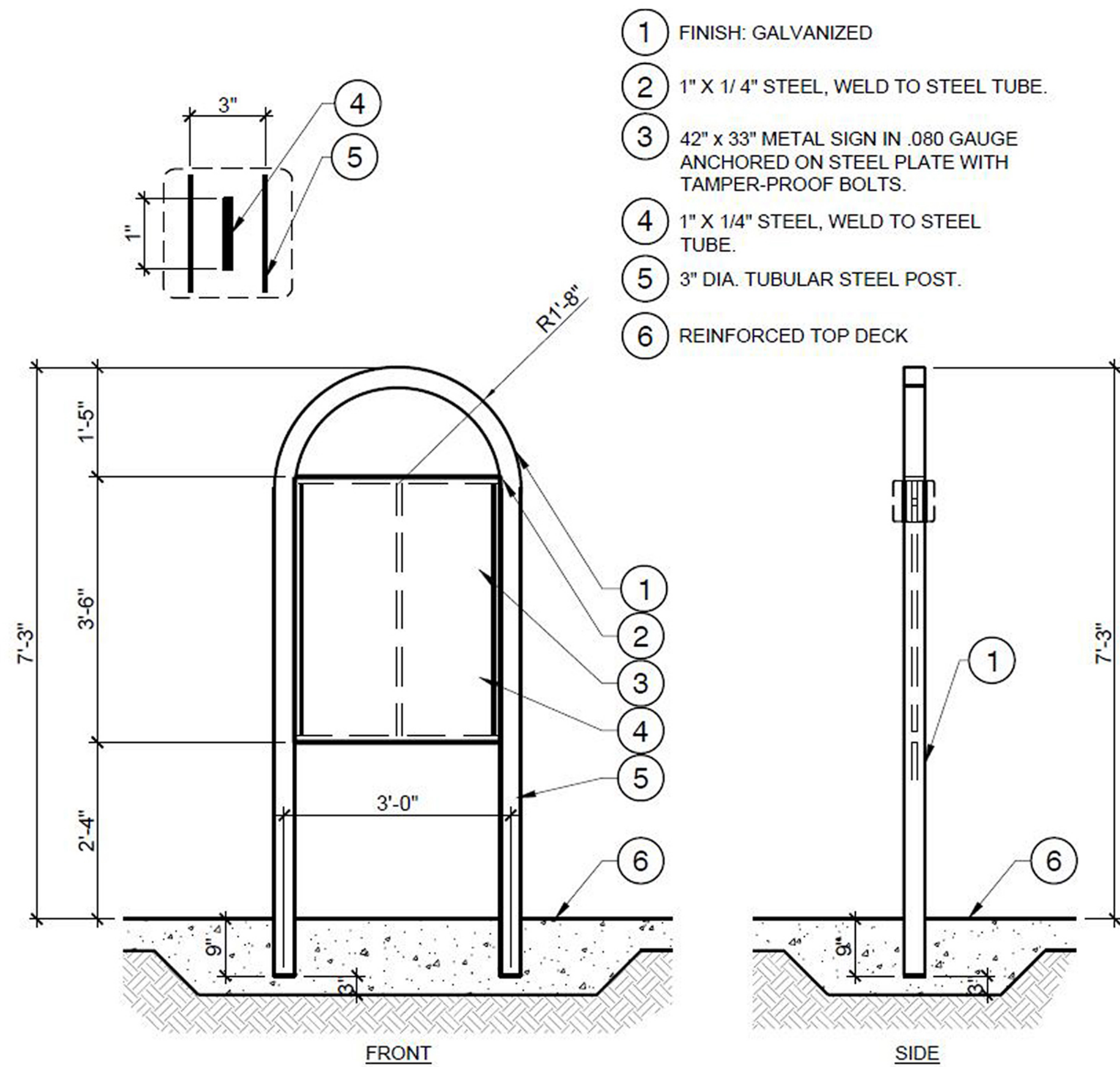
PRECEDENT IMAGES - SITE INTEGRATION

CITY OF DRIPPING SPRINGS SKATE PARK
FOUNDERS MEMORIAL PARK | DRIPPING SPRINGS, TX | MAY 2023





PRECEDENT IMAGES - SITE INTEGRATION



RULES & REGULATIONS SIGN

Code of Conduct:

I agree to follow these guidelines to encourage a safe environment for all park participants.

No Hate Just Skate: The skate park is an all-inclusive environment. Everyone is welcome regardless of race, age, gender, sexual, orientation, creed, economic status, or abilities.

All Skill Levels Welcome: The skate park has been designed for all skill levels. Ride within your abilities and be considerate of other riders. Look before you go, do not drop in on others, and wait your turn!

Show Respect: Be courteous and respectful to other people using the skate park and all other park patrons.

Visitors Need to Know:

Protective safety equipment that properly fits is strongly encouraged to be worn while using the skate park.

The skate park is unsupervised, and users ride at their own risk.

Motorized toys, equipment, ramps, boxes, or other unauthorized obstacles are not allowed in the park.

Parents / guardians are responsible for supervising their children.

Spectators and pedestrians should not enter the skate area.

Make sure your riding equipment is in good working condition.

Inspect the park before use, stay off surfaces when wet or otherwise hazardous.

Do not leave possessions unattended.

The skate park is open to bikes, skateboards, scooters, in-line skates, and other non-motorized wheeled vehicles.

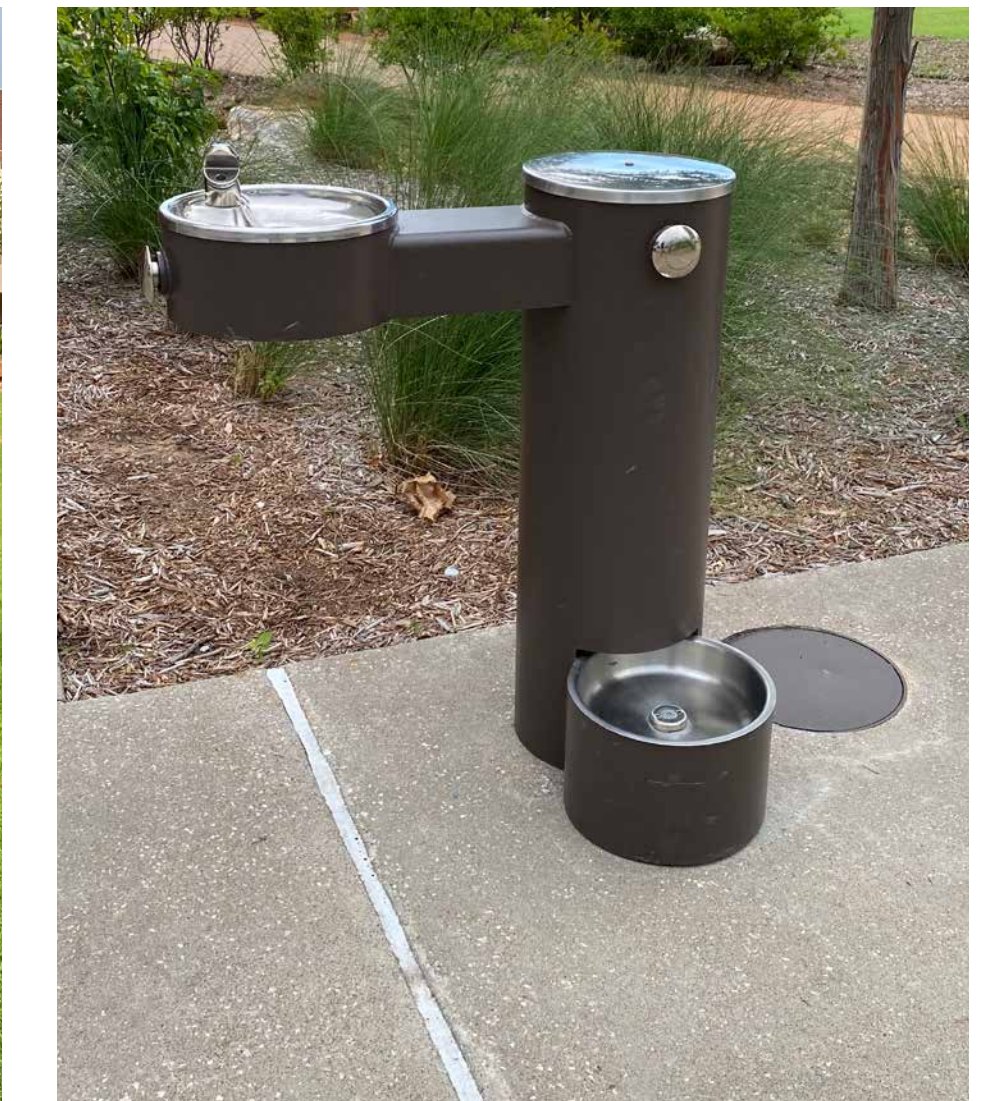
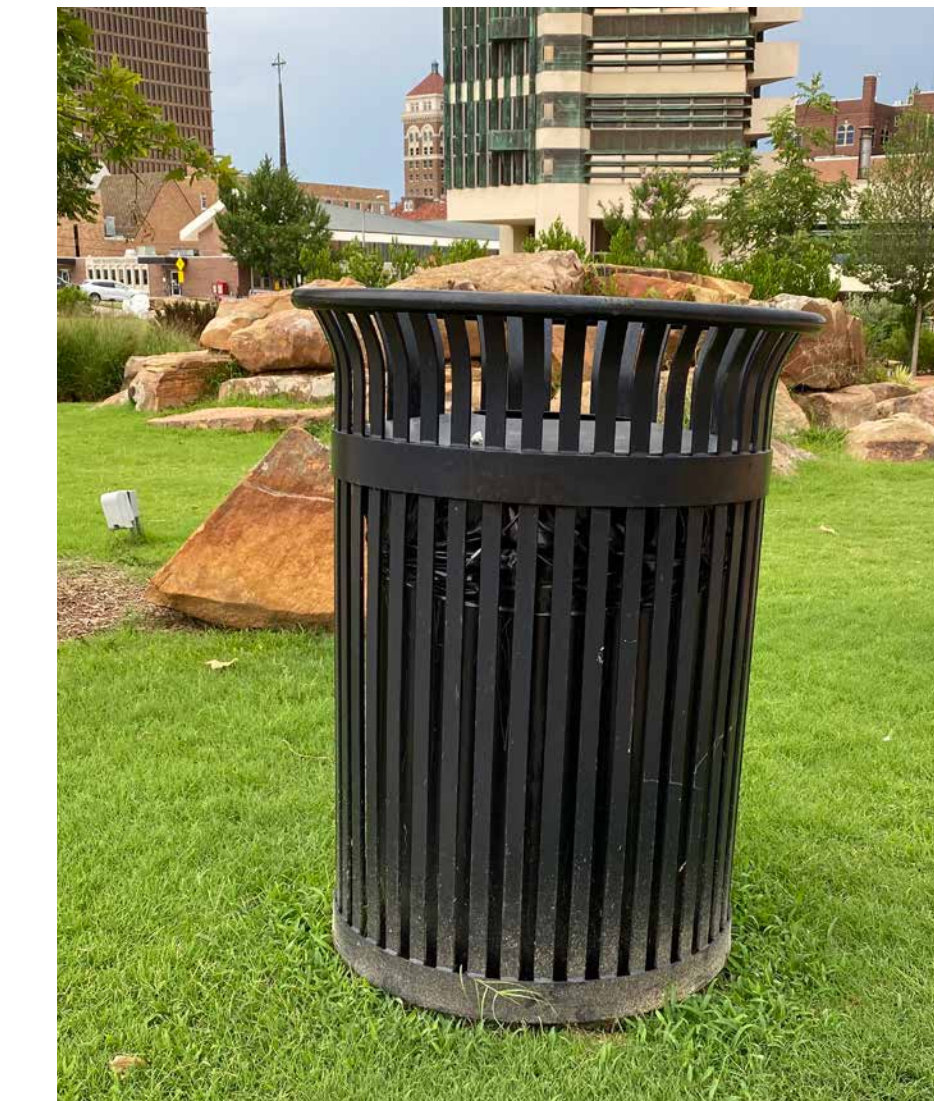
Skate Park Rules:

No glass containers. No alcohol or drugs. No loud music. No vandalism. No soliciting. No fires. No motorized vehicles. No littering. No sleeping. No unpermitted events or vending. Leash and clean up after your dog.

Hours of Operation:

Summer (April 1- November 15): 5 A.M. to 11 P.M.

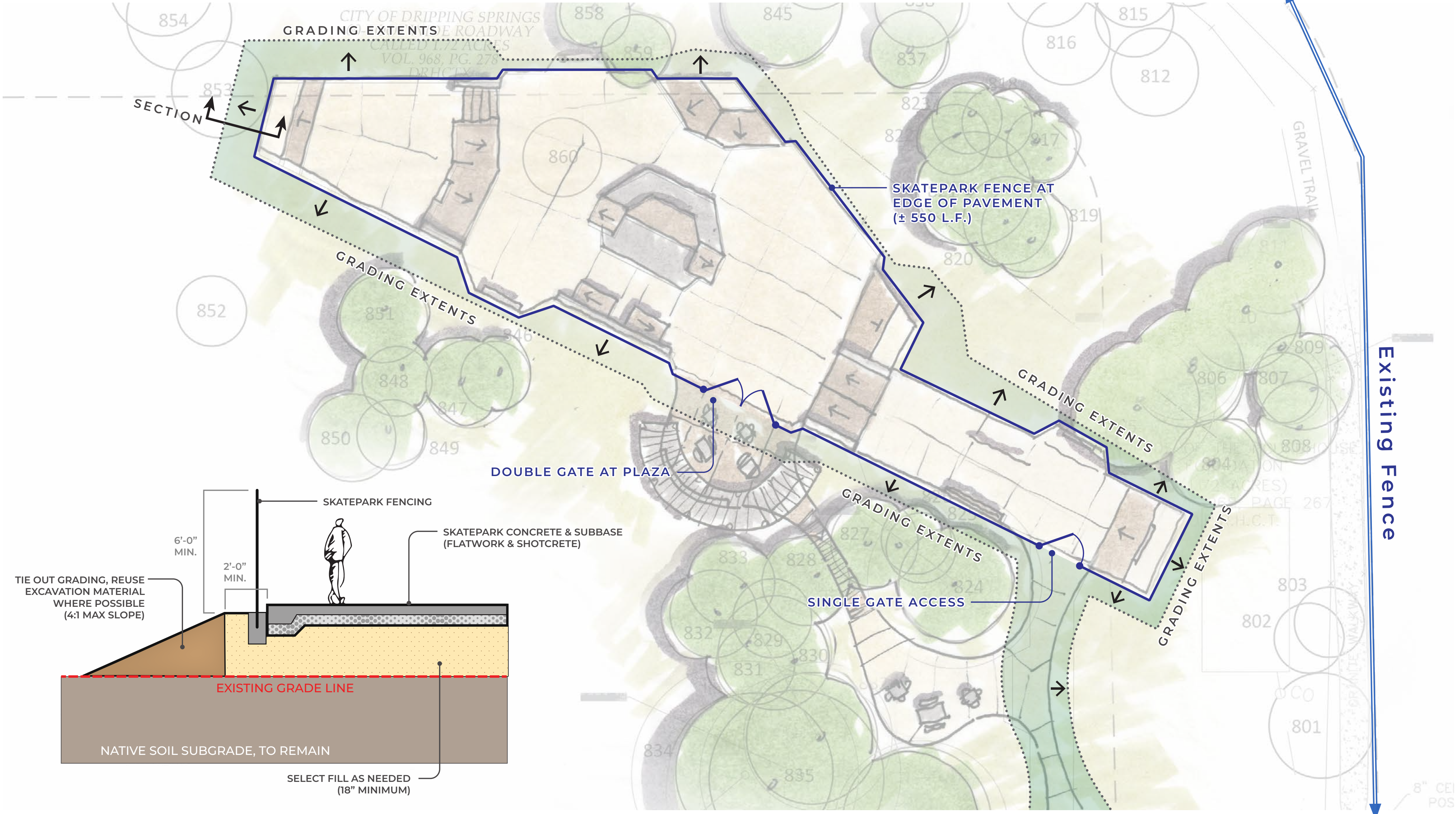
Winter (November 16 - March 31): 7 A.M. to 10 P.M.



RULES & REGULATIONS SIGN TEXT

PRECEDENT IMAGES - SITE FURNISHINGS

Fencing Exhibit



Open Skatepark Examples

- + Allows for improved site integration
- + Provides message of inclusion to community
- + Improved Site Access
- + Reduces maintenance challenges



Washington Park Skate Spot (Escondido Skate Spot)
Escondido, CA



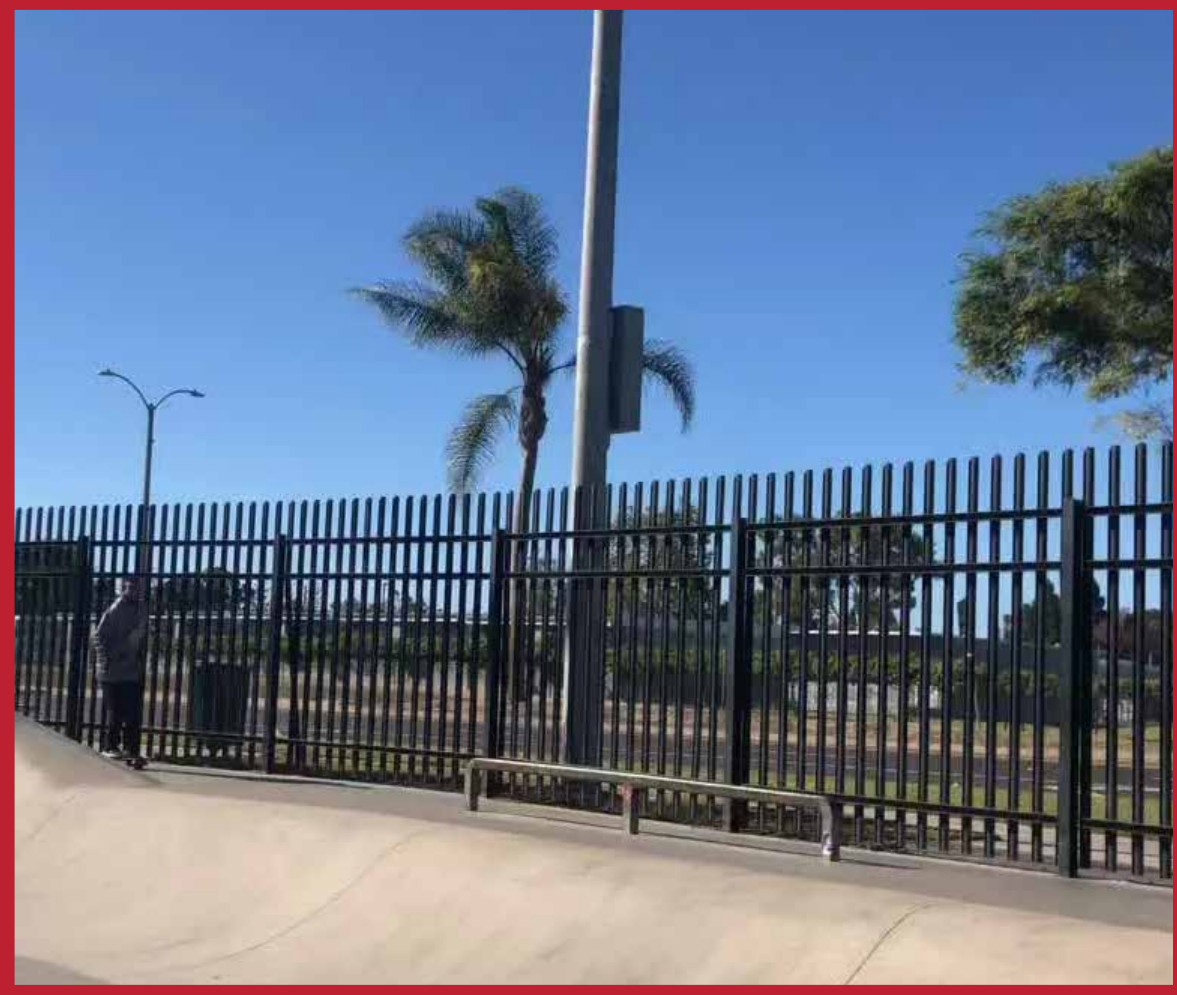
House Skatepark
Austin, TX



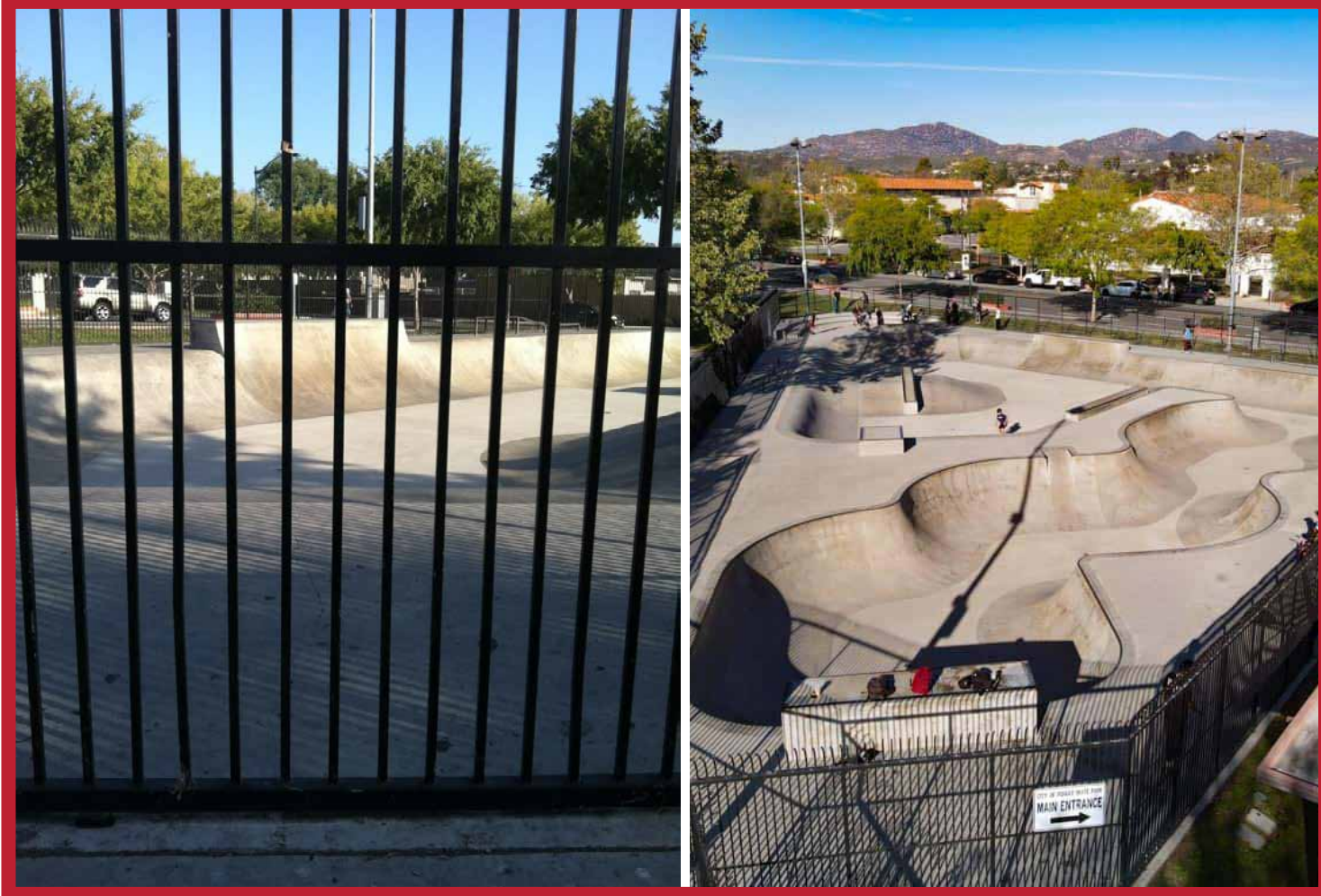
Fire Station Skate Plaza
Fort Worth, TX

Fenced Skatepark Examples

- Reduces site access
- Acts as visual barrier
- Creates maintenance challenges
- Adversely affects overall feel of skatepark
- Sends negative messages to skate community
- Significant project expense



Oxnard Skatepark
Oxnard, CA



Poway Skatepark
Poway, CA



City Heights Skatepark
San Diego, CA



Preliminary Cost/Scope Exhibit

COST BREAKDOWN

ITEM	ESTIMATED COST
BY SPA & NLS	
Design Fee(s)	
Conceptual Design	\$52,800
Technical Plans & Specs	\$35,200
Skatepark Construction	\$712,000
BASE TOTAL	\$800,000

ITEMS EXCLUDED FROM SPA SCOPE	
Landscape, Irrigation, Restoration of Disturbed*	By Others
Material Testing Services	By Others
Site Environmental Assessments	By Others
Permit Fees	Request to be waived by City
Tree Mitigation Costs	Request to be waived by City

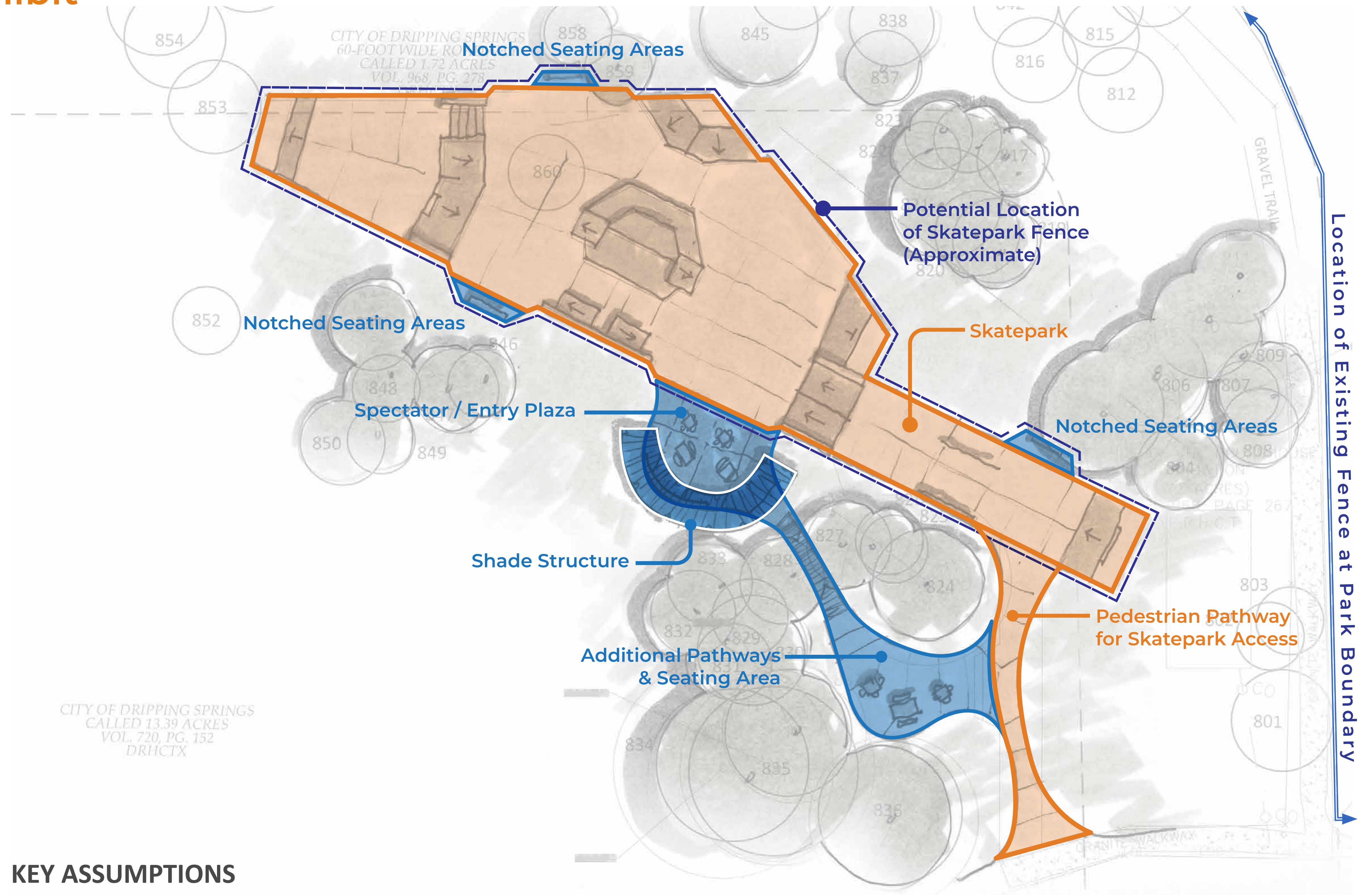
IN-KIND DONATION (BY OTHERS)	
Land clearing / Rootball Removal	Value TBD
Materials Testing Lab	Value TBD

SKATEPARK TOTAL \$800,000 + \$75,000 (FOR AMENITIES)

POTENTIAL SITE AMENITIES (TBD BY CITY)**	
Pathways and Additional Flatwork (outside SP)	\$30,000
Restrooms	\$175,000
Drinking Water Fountain	\$25,000
Skatepark Lighting	\$150,000
Shade Structure	\$80,000
Bike Rack(s)	\$2,000
Benches, Tables, & Seatwalls	\$15,000
Skatepark Rules Signage	\$5,000
Landscape Restoration & Additional Plantings*	\$15,000
Trash/Recycling Receptacles	\$4,000
Skatepark Fencing	\$150,000

* CITY OF DRIPPING SPRINGS LANDSCAPE FUND MAY POTENTIALLY BE USED TO COVER COST OF PLANTING SCOPE (MATERIALS & INSTALL)

** POTENTIAL SITE AMENITIES TO BE CONFIRMED BY CITY OF DRIPPING SPRINGS. \$75,000 HAS BEEN PROPOSED WITHIN THE 2024 CITY BUDGET FOR AMENITIES OUTSIDE OF THE \$800,000 SKATEPARK BUDGET.



KEY ASSUMPTIONS

This estimated cost of construction is based off of the following project assumptions:

- Skatepark target size is roughly 9,000 s.f.
- Removal of some existing trees is possible, but will require remediation.
- Contractor can stage material and equipment and on site
- City of Dripping Springs has allocated approximately \$75,000 worth of funding for site amenities & furnishings. These items are still to be determined (potential items in table on the left)
- Skatepark terrain consisting of street plaza terrain with a variety of features for different skill levels
- Site will be left graded with small machinery.
- Amenities and landscape remediation on any interior planters and exterior landscaping by others

Legend

- Base Project Budget
- Additional Amenities & Site Features
- Potential Skatepark Fencing