

CITY OF DRIPPING SPRINGS

Park Signage Design Development Package

December 2021

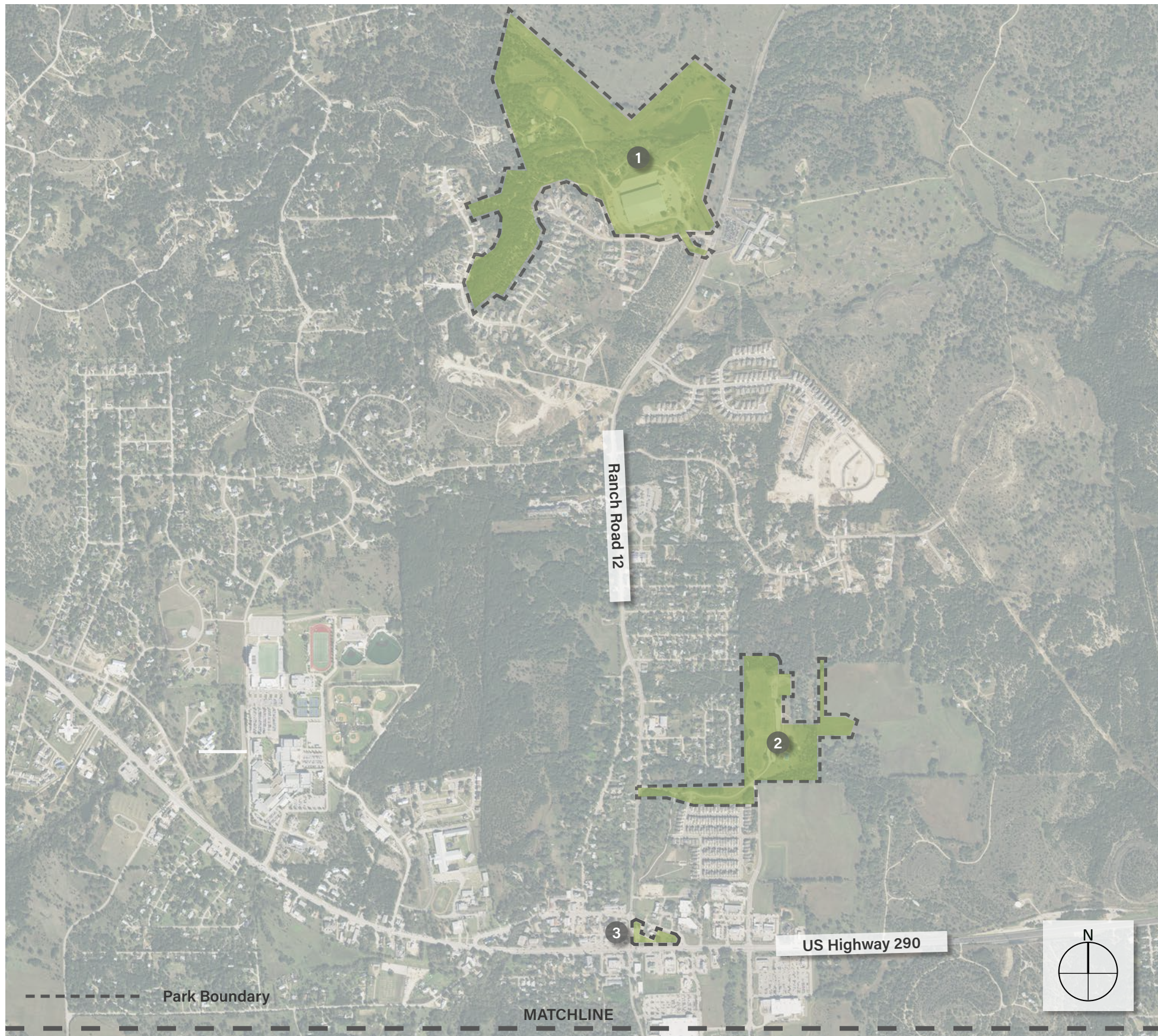
CONTENTS

Key Map
Existing Sign Type Inventory
Existing Signage Inventory by Park
Proposed Signage Designs
Proposed Signage Locations by Park
Appendix: Existing Sign Inventory Photo Array



CLIENT
City of Dripping Springs
511 Mercer Street
Dripping Springs, Texas 78620

DESIGN TEAM
Studio16:19
305 W. Liberty Ave, Suite 100
Round Rock, TX 78664



D.S.
Ranch Park



Founders
Memorial Park



Veterans
Memorial Park

Disclaimer:
This document represents design progress and its provision, either electronic or hard copy, is to communicate design intent only. Original and published work may not be duplicated, used, or disclosed without the written consent of Studio16:19.

Dripping Springs Key Map (North)



Dripping Springs Key Map (South)

Disclaimer:
 This document represents design progress and its provision, either electronic or hard copy, is to communicate design intent only. Original and published work may not be duplicated, used, or disclosed without the written consent of Studio16:19.

● ENTRANCE MONUMENT SIGN (5)



◆ INFO KIOSKS (3)



■ PARK RULES/INFO/MISC. SIGNS (12)



▲ TRAIL MARKERS (18)

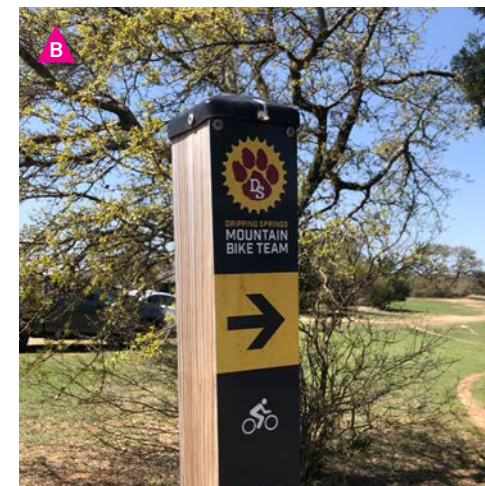


Existing Sign Type Inventory - All Parks (Quantity)

Disclaimer:
This document represents design progress and its provision, either electronic or hard copy, is to communicate design intent only. Original and published work may not be duplicated, used, or disclosed without the written consent of Studio16:19.



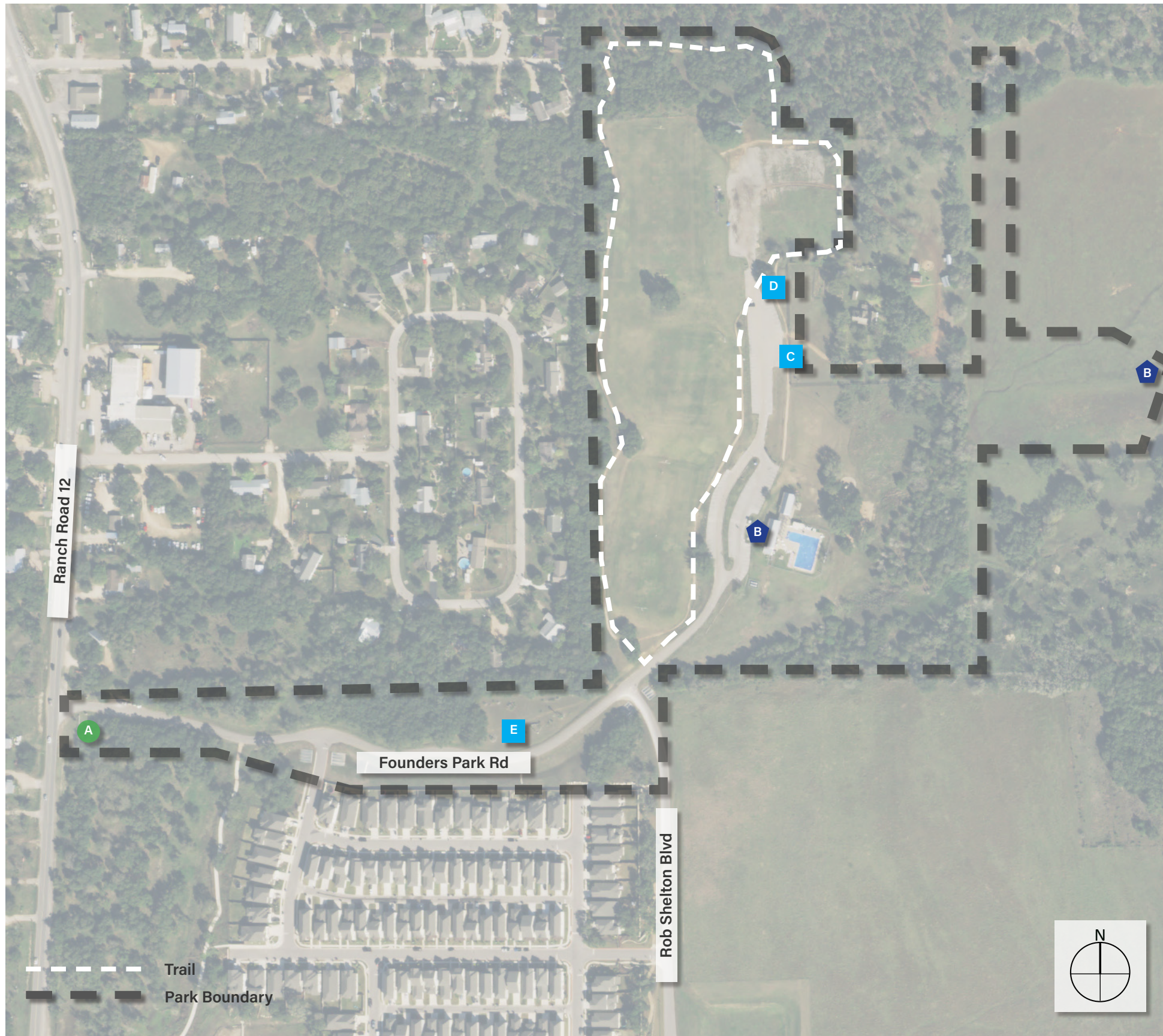
ENTRANCE MONUMENT SIGN (1)



TRAIL MARKER (1)

Dripping Springs Ranch Park - Existing Signage Inventory (Quantity)

Disclaimer:
This document represents design progress and its provision, either electronic or hard copy, is to communicate design intent only. Original and published work may not be duplicated, used, or disclosed without the written consent of Studio16:19.



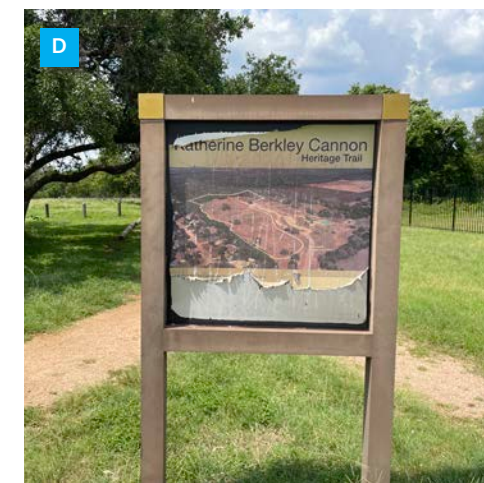
ENTRANCE MONUMENT SIGN (1)



INFO KIOSK (1)



PARK RULES/INFO SIGN (3)



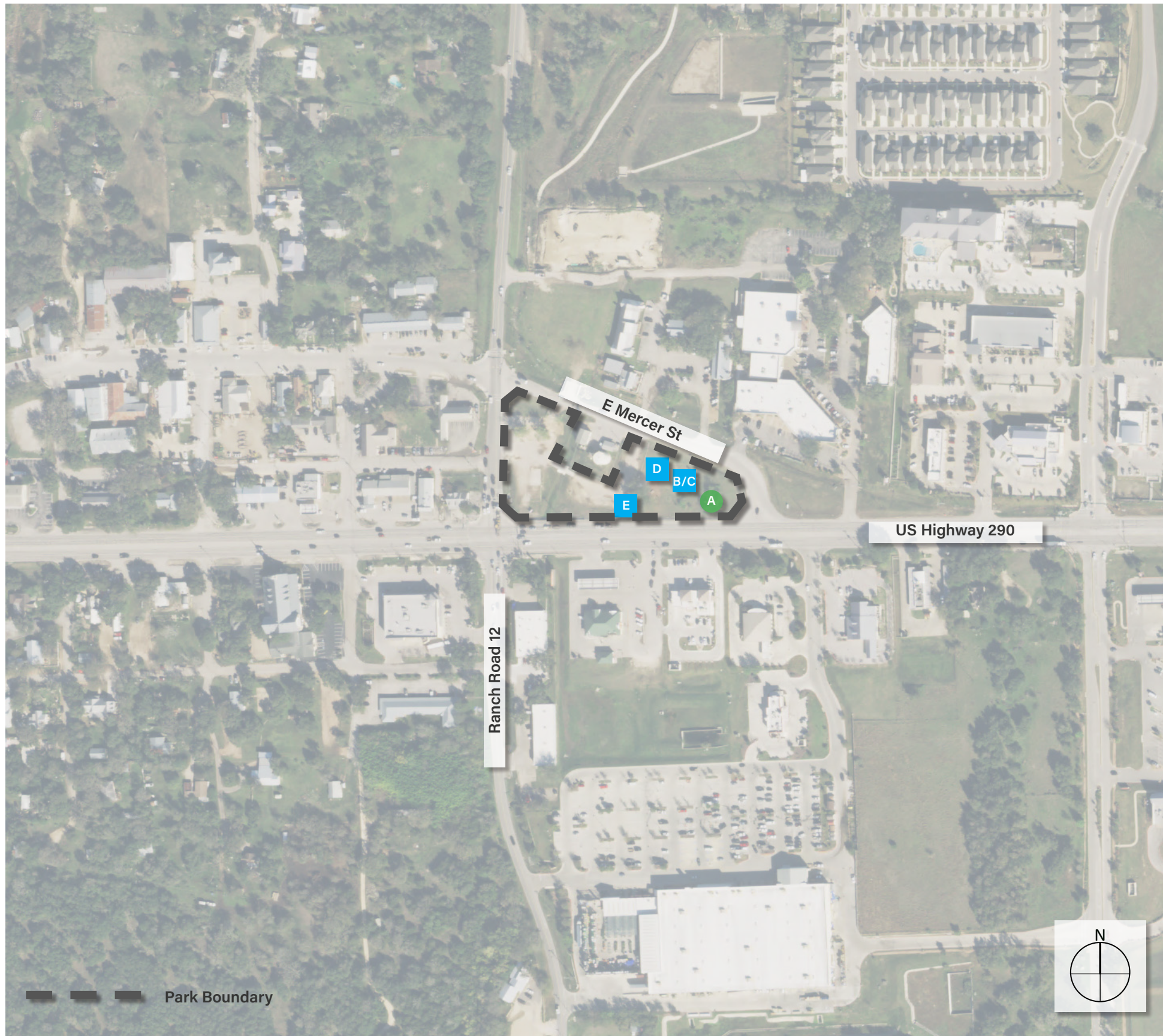
D



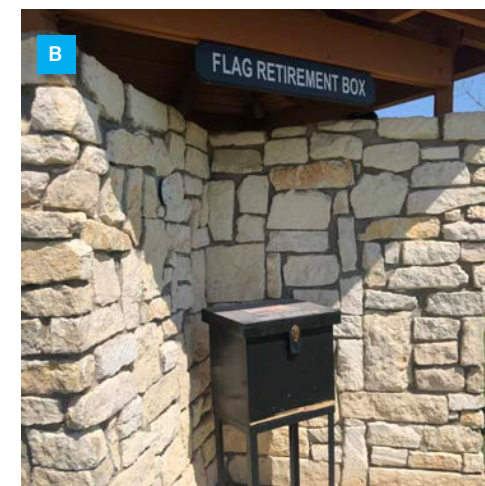
E

Disclaimer:
This document represents design progress and its provision, either electronic or hard copy, is to communicate design intent only. Original and published work may not be duplicated, used, or disclosed without the written consent of Studio16:19.

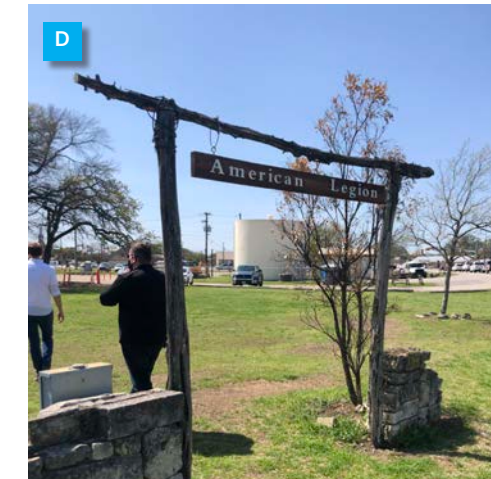
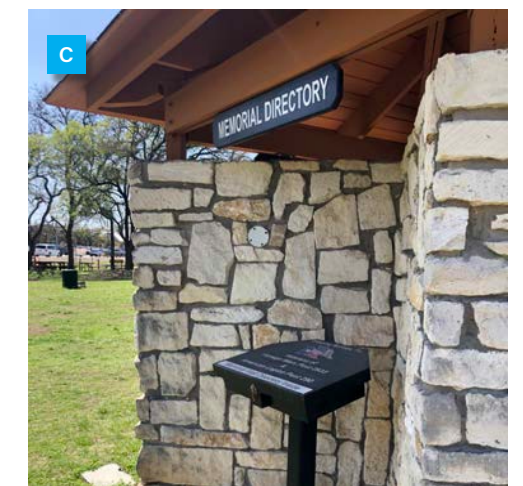
Founders Memorial Park - Existing Signage Inventory (Quantity)



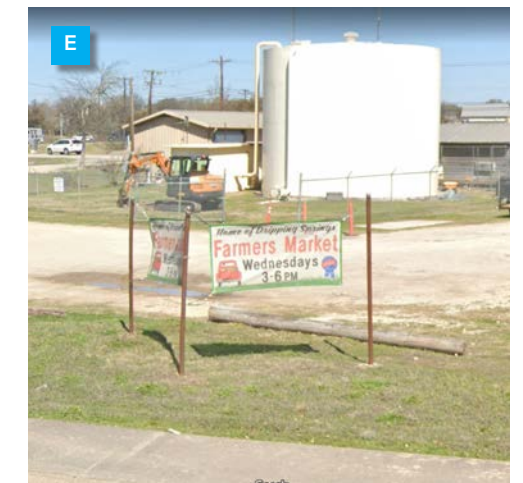
ENTRANCE MONUMENT SIGN (1)



PARK RULES/INFO SIGN (3)

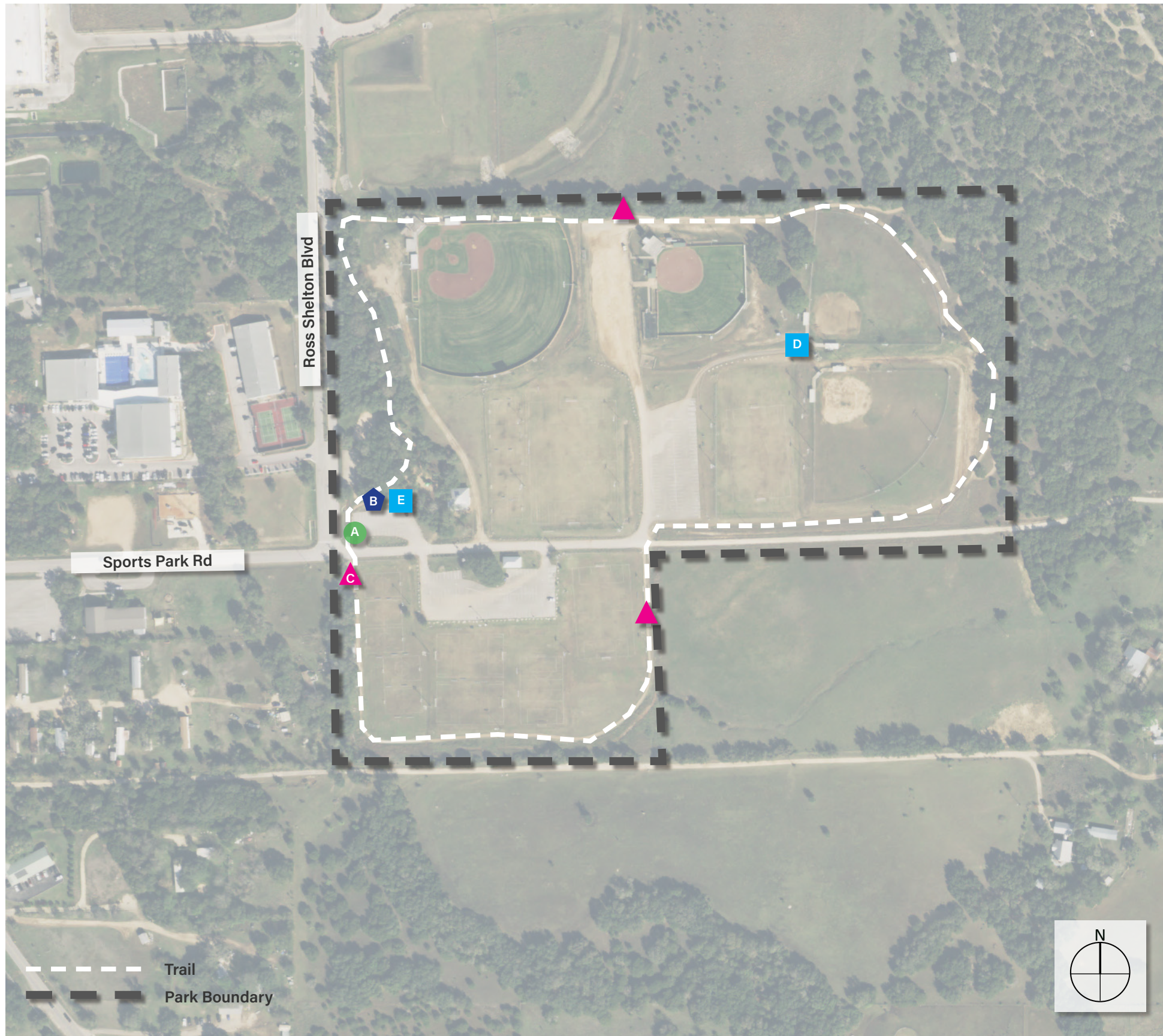


3-SIDED BANNER SIGN (1)



Veterans Memorial Park - Existing Signage Inventory (Quantity)

Disclaimer:
This document represents design progress and its provision, either electronic or hard copy, is to communicate design intent only. Original and published work may not be duplicated, used, or disclosed without the written consent of Studio16:19.



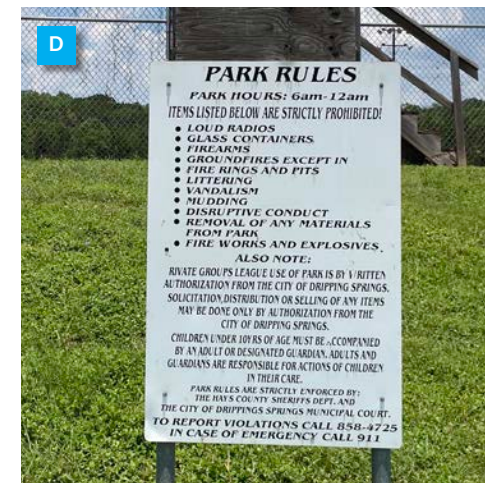
ENTRANCE MONUMENT SIGN (1)



INFO KIOSK (1)



TRAIL MARKERS (3)

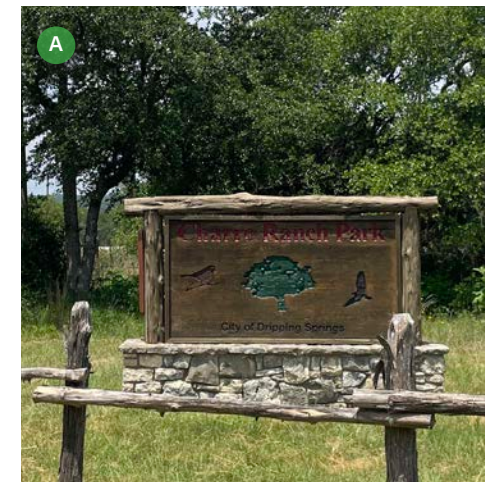
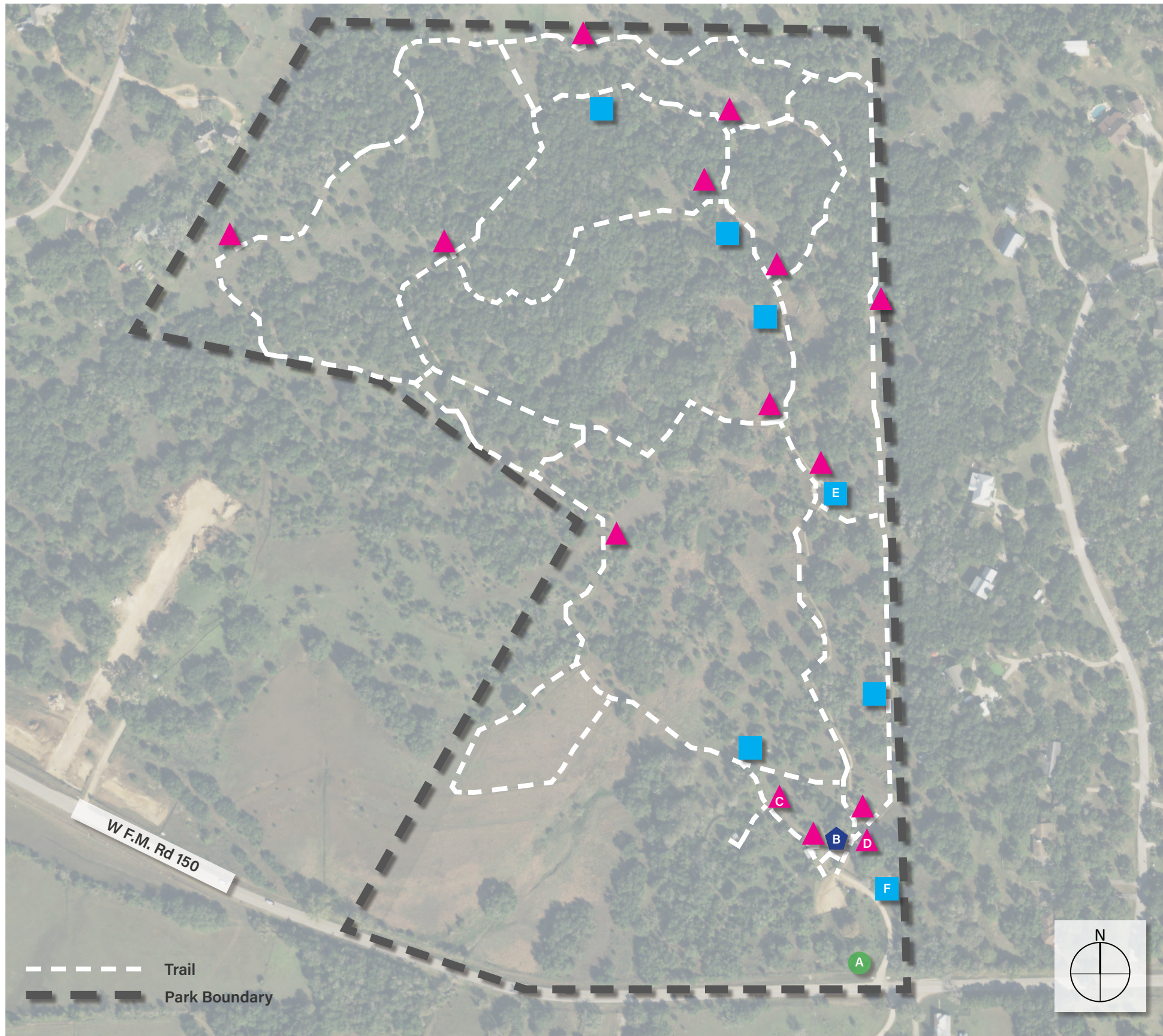


PARK RULES/INFO SIGN (2)

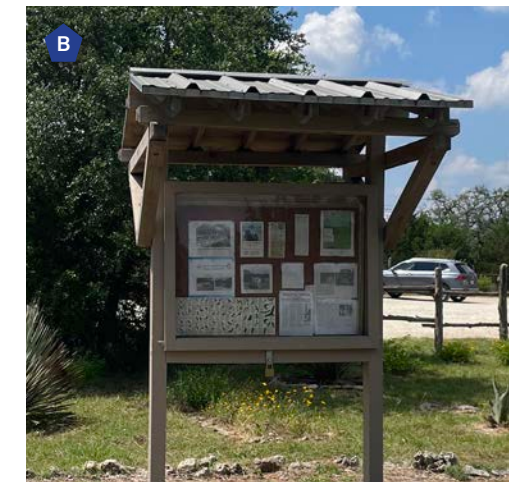


Sports & Recreation Park - Existing Signage Inventory (Quantity)

Disclaimer:
This document represents design progress and its provision, either electronic or hard copy, is to communicate design intent only. Original and published work may not be duplicated, used, or disclosed without the written consent of Studio16:19.



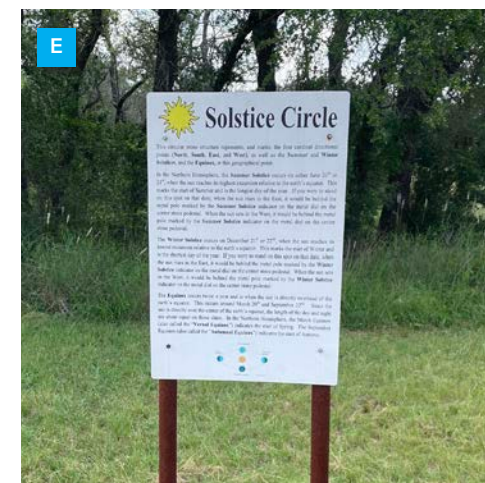
ENTRANCE MONUMENT SIGN (1)



INFO KIOSK (1)



TRAIL MARKERS (14)



PARK RULES/INFO SIGN (7)



Charro Ranch Park - Existing Signage Inventory (Quantity)

Disclaimer:
This document represents design progress and its provision, either electronic or hard copy, is to communicate design intent only. Original and published work may not be duplicated, used, or disclosed without the written consent of Studio16:19.

● ENTRANCE MONUMENT SIGN



◆ INFO KIOSKS



■ PARK RULES/INFO/MISC. SIGNS



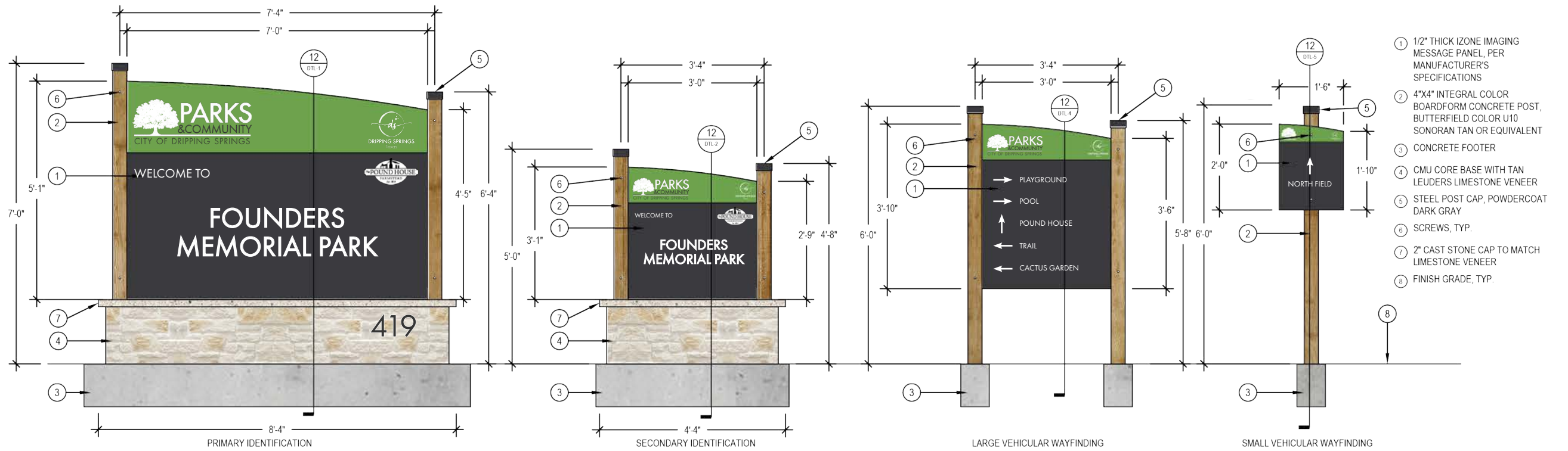
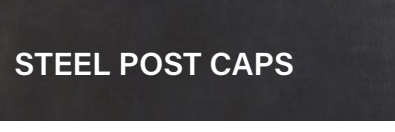
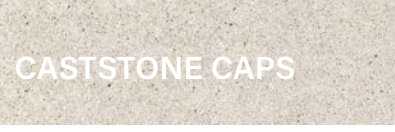
▲ TRAIL MARKERS



Inspirational Design Images

Disclaimer:
This document represents design progress and its provision, either electronic or hard copy, is to communicate design intent only. Original and published work may not be duplicated, used, or disclosed without the written consent of Studio16:19.

MATERIALS

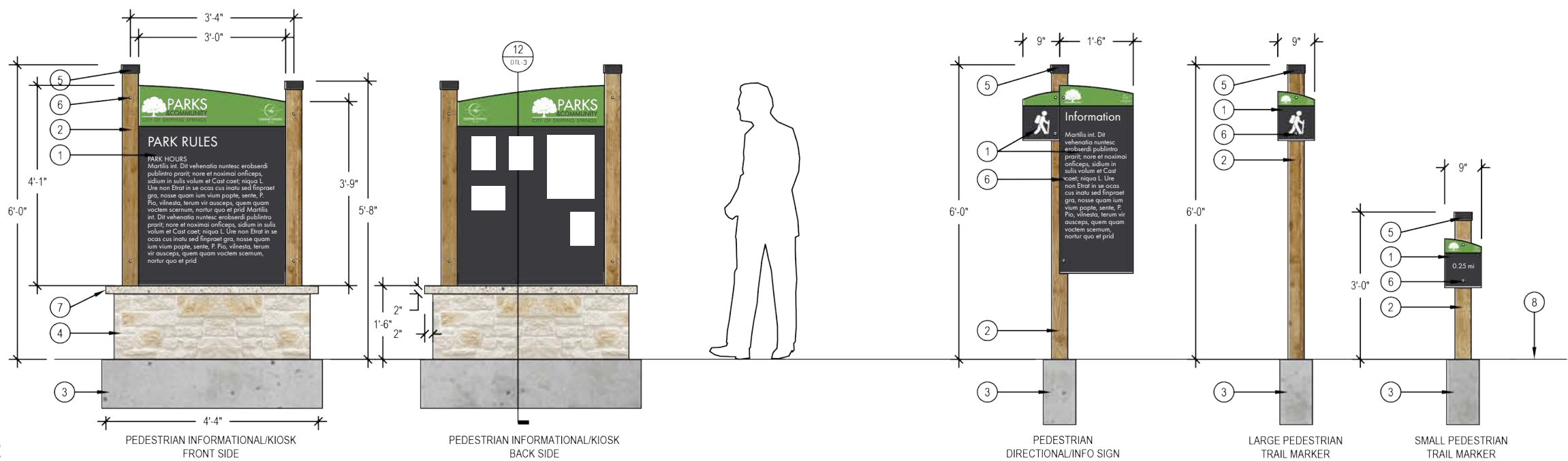
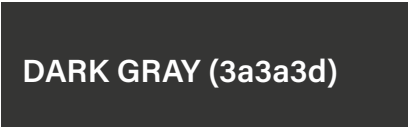


- 1 1/2" THICK IZONE IMAGING MESSAGE PANEL, PER MANUFACTURER'S SPECIFICATIONS
- 2 4"x4" INTEGRAL COLOR BOARDFORM CONCRETE POST, BUTTERFIELD COLOR U10 SONORAN TAN OR EQUIVALENT
- 3 CONCRETE FOOTER
- 4 CMU CORE BASE WITH TAN LEUDERS LIMESTONE VENEER
- 5 STEEL POST CAP, POWDERCOAT DARK GRAY
- 6 SCREWS, TYP.
- 7 2" CAST STONE CAP TO MATCH LIMESTONE VENEER
- 8 FINISH GRADE, TYP.

1 VEHICULAR IDENTIFICATION SIGNAGE

SCALE: 3/8" = 1'-0"

IZONE PANEL COLORS



- 1 1/2" THICK IZONE IMAGING MESSAGE PANEL, PER MANUFACTURER'S SPECIFICATIONS
- 2 4"x4" INTEGRAL COLOR BOARDFORM CONCRETE POST, BUTTERFIELD COLOR U10 SONORAN TAN OR EQUIVALENT
- 3 CONCRETE FOOTER
- 4 CMU CORE BASE WITH TAN LEUDERS LIMESTONE VENEER
- 5 STEEL POST CAP, POWDERCOAT DARK GRAY
- 6 SCREWS, TYP.
- 7 2" CAST STONE CAP TO MATCH LIMESTONE VENEER
- 8 FINISH GRADE, TYP.

FONT:
 Futura PT: Medium
 ABCDEFGHIJKLMNOPQRSTUVWXYZ
 abcdefghijklmnopqrstuvwxyz
 1234567890

2 PEDESTRIAN IDENTIFICATION SIGNAGE: FOUNDERS MEMORIAL PARK, VETERANS MEMORIAL PARK, SPORTS & REC PARK, CHARRO RANCH PARK

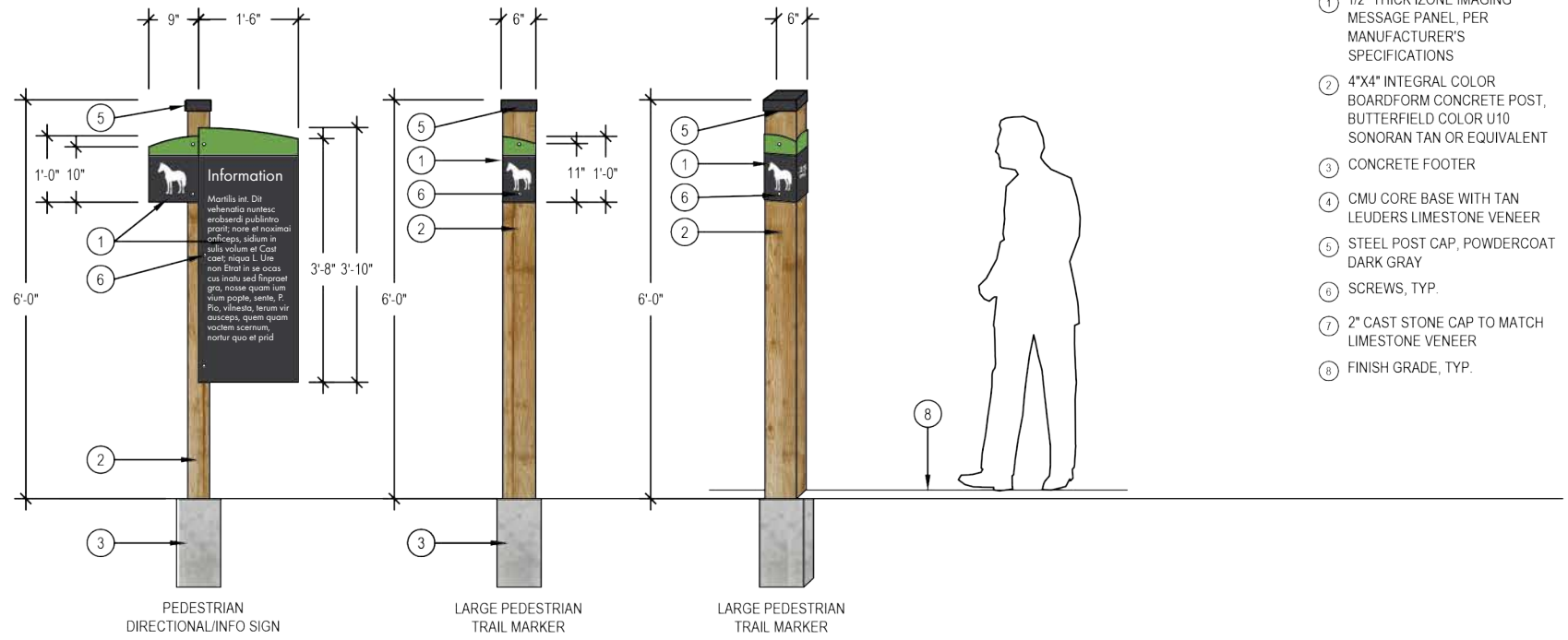
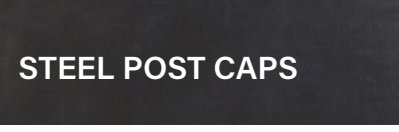
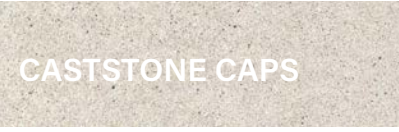
SCALE: 3/8" = 1'-0"

Disclaimer:
 This document represents design progress and its provision, either electronic or hard copy, is to communicate design intent only. Original and published work may not be duplicated, used, or disclosed without the written consent of Studio16:19.

Rustic-Modern Sign Design



MATERIALS

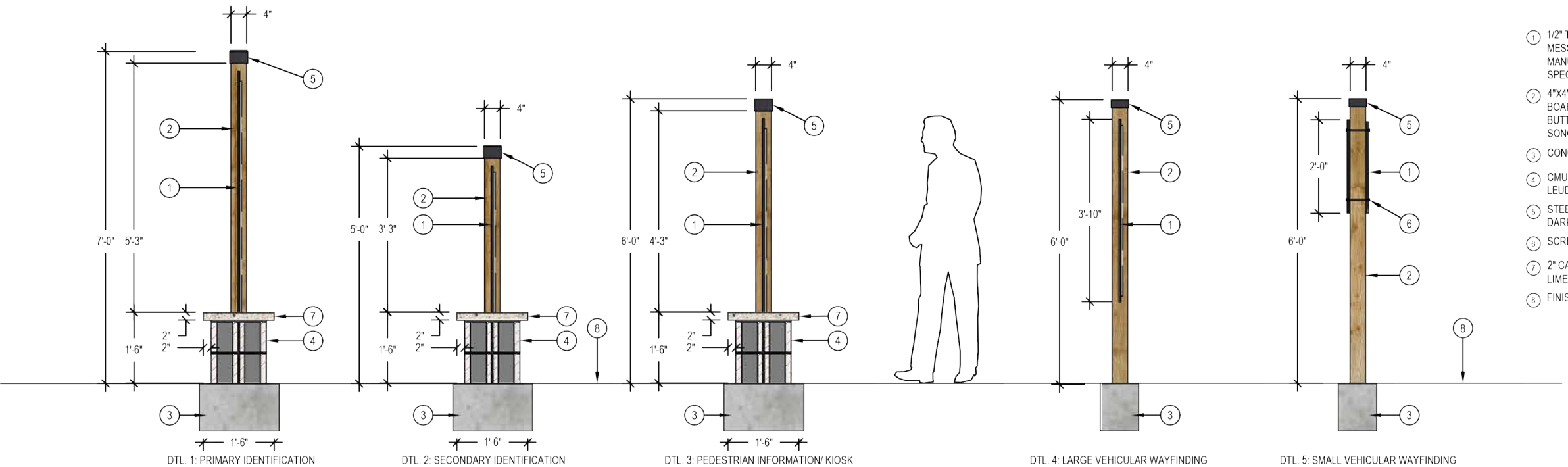
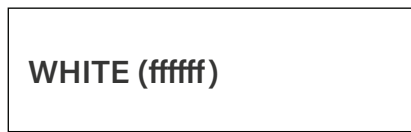
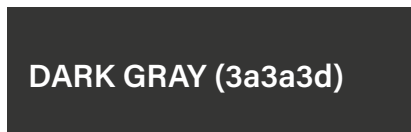
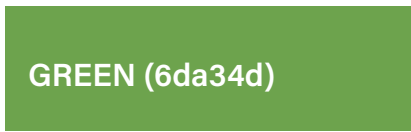


- ① 1/2" THICK IZONE IMAGING MESSAGE PANEL, PER MANUFACTURER'S SPECIFICATIONS
- ② 4"x4" INTEGRAL COLOR BOARDFORM CONCRETE POST, BUTTERFIELD COLOR U10 SONORAN TAN OR EQUIVALENT
- ③ CONCRETE FOOTER
- ④ CMU CORE BASE WITH TAN LEUDERS LIMESTONE VENEER
- ⑤ STEEL POST CAP, POWDERCOAT DARK GRAY
- ⑥ SCREWS, TYP.
- ⑦ 2" CAST STONE CAP TO MATCH LIMESTONE VENEER
- ⑧ FINISH GRADE, TYP.

1 PEDESTRIAN IDENTIFICATION SIGNAGE: RANCH PARK

SCALE: 3/8" = 1'-0"

IZONE PANEL COLORS



- ① 1/2" THICK IZONE IMAGING MESSAGE PANEL, PER MANUFACTURER'S SPECIFICATIONS
- ② 4"x4" INTEGRAL COLOR BOARDFORM CONCRETE POST, BUTTERFIELD COLOR U10 SONORAN TAN OR EQUIVALENT
- ③ CONCRETE FOOTER
- ④ CMU CORE BASE WITH TAN LEUDERS LIMESTONE VENEER
- ⑤ STEEL POST CAP, POWDERCOAT DARK GRAY
- ⑥ SCREWS, TYP.
- ⑦ 2" CAST STONE CAP TO MATCH LIMESTONE VENEER
- ⑧ FINISH GRADE, TYP.

2 WAYFINDING SIGNAGE: SECTION VIEW

SCALE: 3/8" = 1'-0"

FONT:

Futura PT: Medium

ABCDEFGHIJKLMNOPQRSTUVWXYZ
abcdefghijklmnopqrstuvwxyz
1234567890

Disclaimer:
This document represents design progress and its provision, either electronic or hard copy, is to communicate design intent only. Original and published work may not be duplicated, used, or disclosed without the written consent of Studio16:19.

Rustic-Modern Sign Design



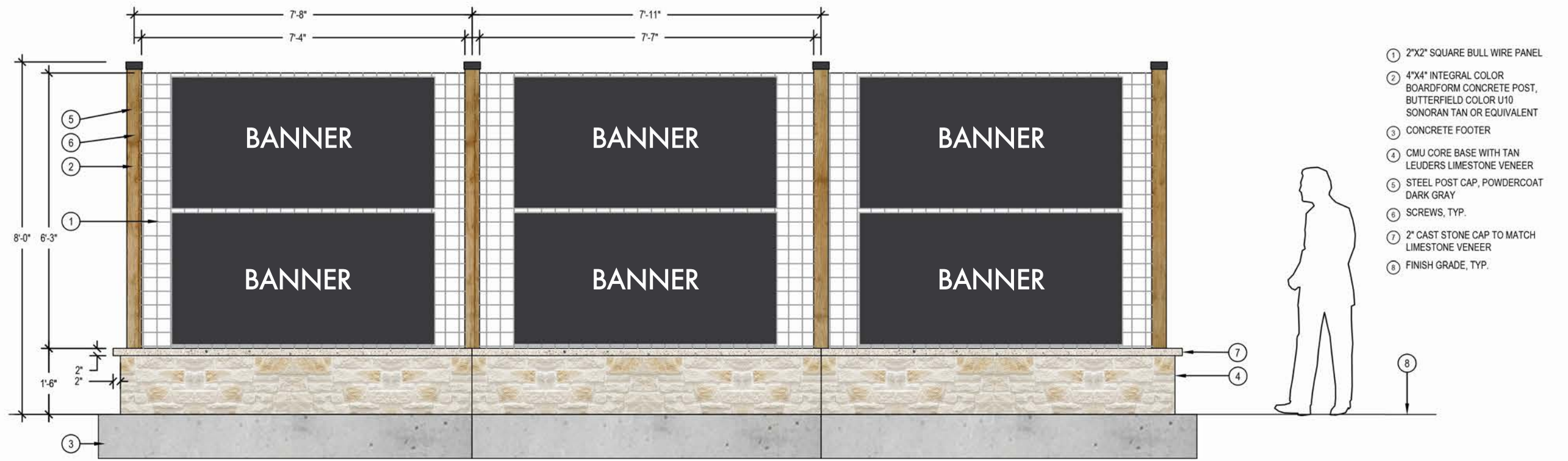
MATERIALS

INTEGRAL COLOR BOARDFORM CONCRETE

LIMESTONE

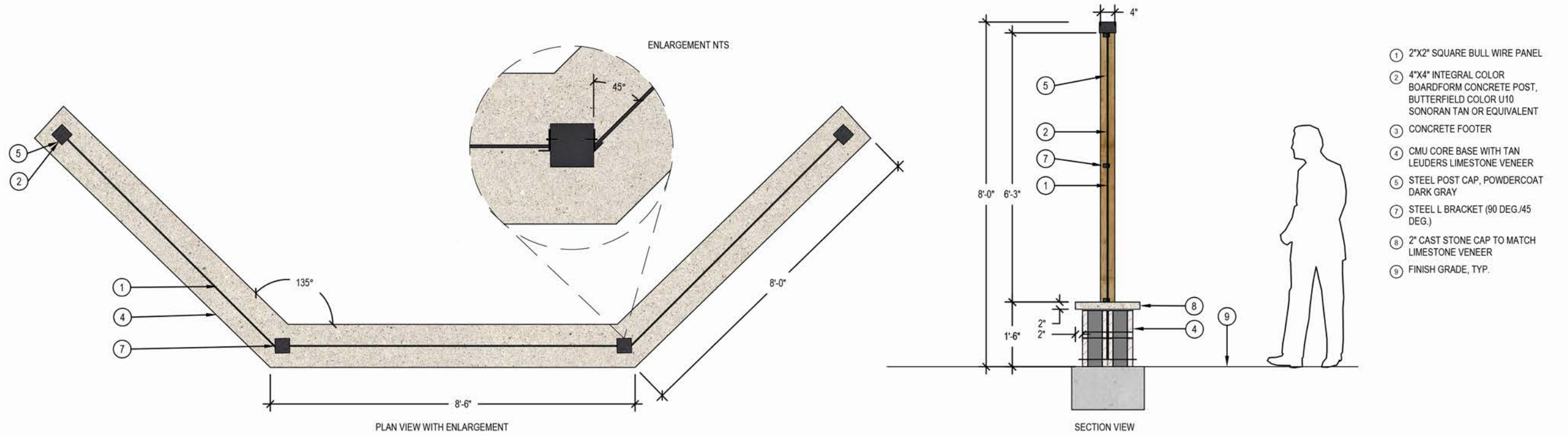
CASTSTONE CAPS

STEEL POST CAPS



1 THREE SIDED SIGN STRUCTURE WITH BANNERS

SCALE: 3/8" = 1'-0"



2 THREE SIDED SIGN STRUCTURE WITH BANNERS

SCALE: 3/8" = 1'-0"

Disclaimer:
This document represents design progress and its provision, either electronic or hard copy, is to communicate design intent only. Original and published work may not be duplicated, used, or disclosed without the written consent of Studio16:19.

Veterans Memorial Park Specialty Event Sign



Proposed Vehicular Wayfinding Sign (1)

A. Ranch Park Wayfinding

Existing Signs to Remain (2)

Dripping Springs Ranch Park - Proposed Signage Locations (Quantity)

Disclaimer:
 This document represents design progress and its provision, either electronic or hard copy, is to communicate design intent only. Original and published work may not be duplicated, used, or disclosed without the written consent of Studio16:19.



- **Proposed Vehicular Monument Sign (2)**
 - A. Primary Identification
 - B. Secondary Identification
- **Proposed Vehicular Wayfinding Sign (1)**
 - C. Pool/Pavilion
 - Playground
 - Historical House
 - North/Middle Field
 - South Field
 - Cactus Garden
- **Proposed Park Rules/Info Sign (1)**
 - D. Historical House Info/Visit Times
 - Trail Map
- **Replacement Park Rules/Info Sign (2)**
 - E. Park Rules
 - Park Info/Events
 - F. Park Rules
- ▲ **Proposed Pedestrian Wayfinding Sign (1)**
 - G. Trailhead
 - Cactus Garden
- ▲ **Proposed Mile Marker (3)**
- **Existing Signs to Remain (3)**
- **Existing Sign/Kiosk to be Replaced (1)**

Founders Memorial Park - Proposed Signage Locations (Quantity)

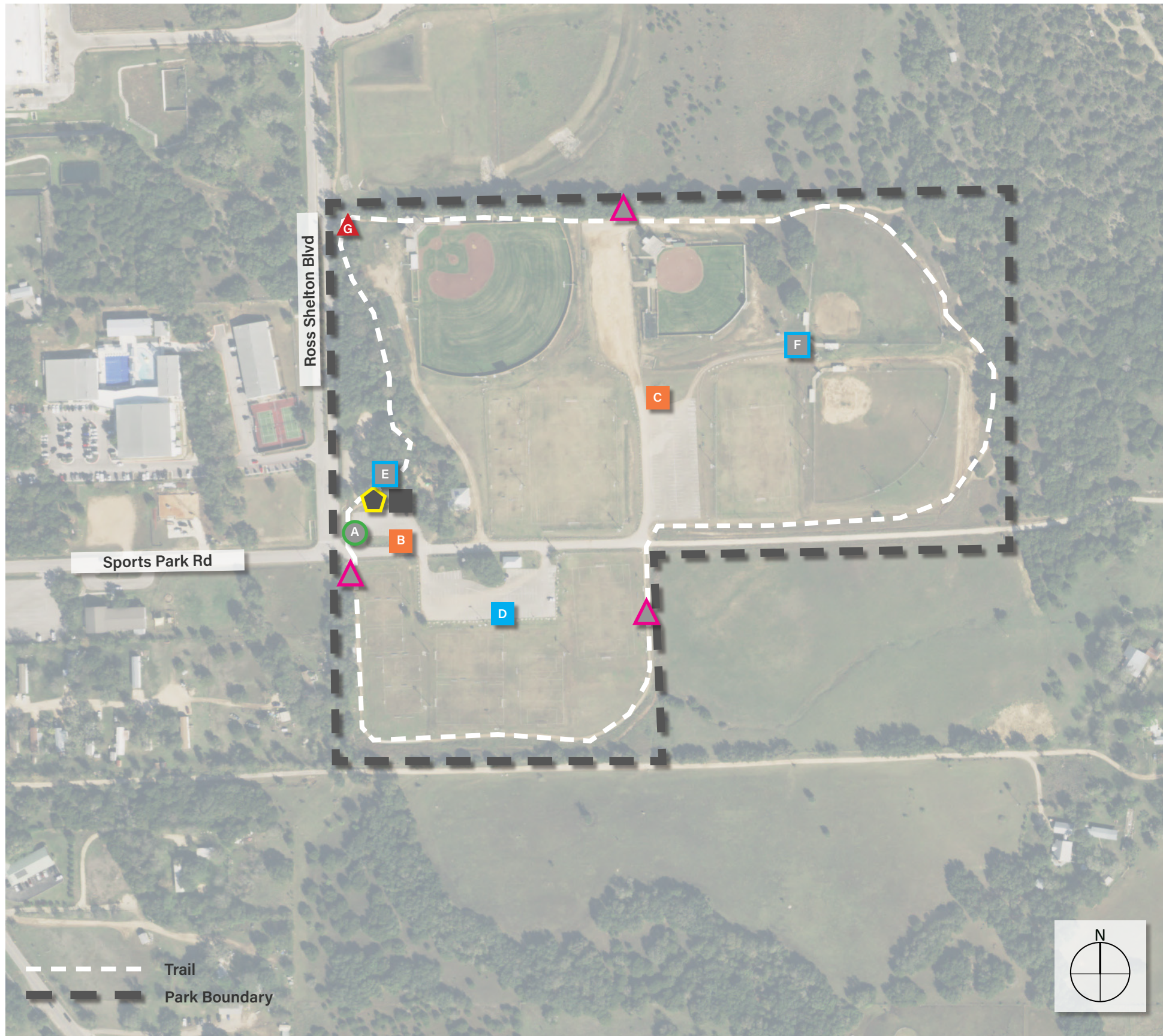
Disclaimer:
This document represents design progress and its provision, either electronic or hard copy, is to communicate design intent only. Original and published work may not be duplicated, used, or disclosed without the written consent of Studio16:19.



- ▲ **Proposed Pedestrian Wayfinding Sign (2)**
 - A. Veterans Park Wayfinding
- ◆ **3-Sided Sign Structure with Banners (1)**
 - B. City Events & Advertisements
- **Existing Signs to Remain (3)**

Veterans Memorial Park - Proposed Signage Locations (Quantity)

Disclaimer:
 This document represents design progress and its provision, either electronic or hard copy, is to communicate design intent only. Original and published work may not be duplicated, used, or disclosed without the written consent of Studio16:19.

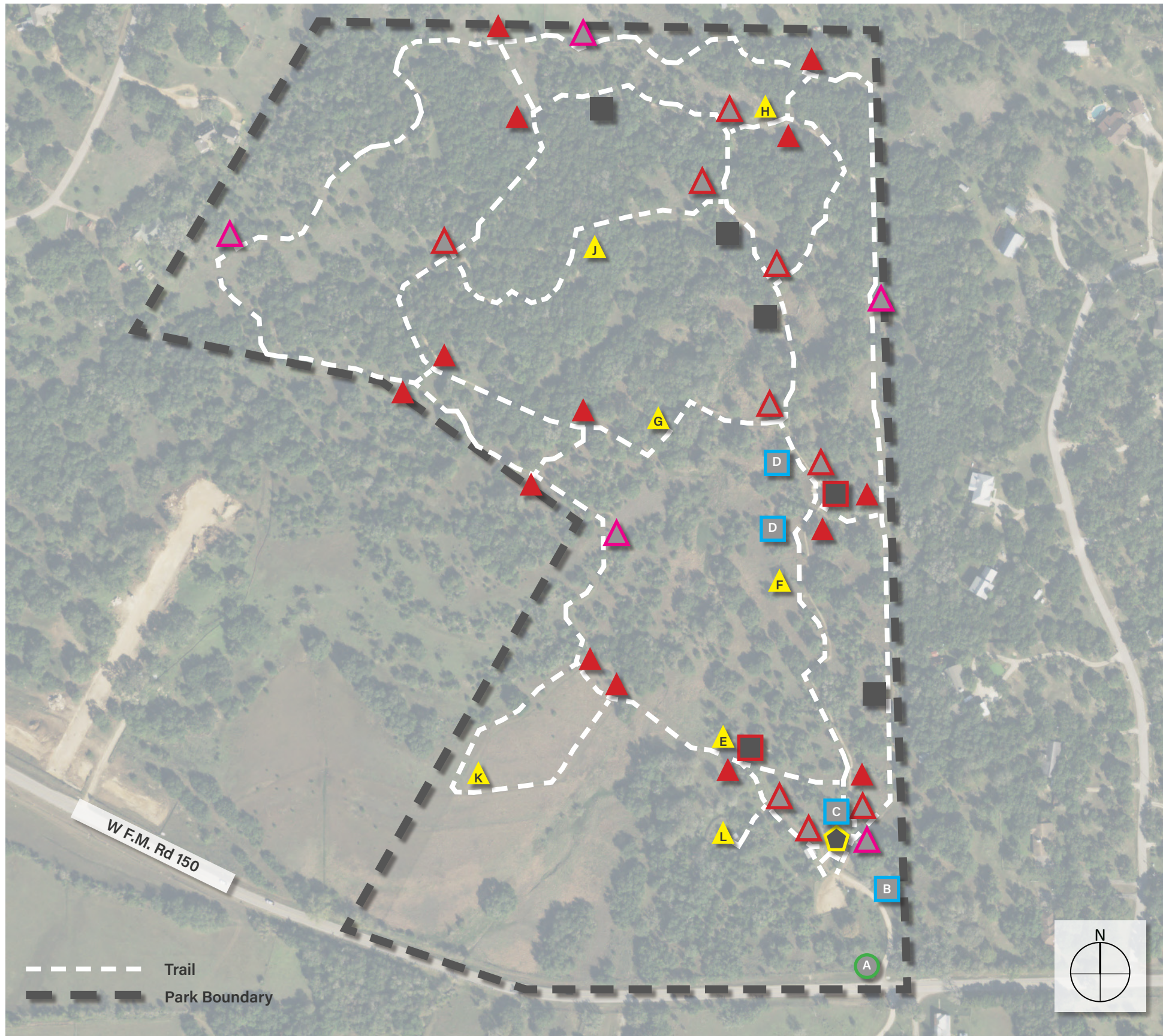


- **Replacement Vehicular Monument Sign (1)**
 - A. Primary identification

- **Proposed Vehicular Wayfinding Sign (2)**
 - B. Playground
 - Basketball/Volleyball Courts
 - Soccer Fields #1-5
 - Soccer Fields #6-7
 - Baseball/Softball Fields
- **Proposed Park Rules/Info Sign (1)**
 - C. Baseball/Softball Fields
 - Adult Softball Fields #1-2
- **Proposed Park Rules/Info Sign (2)**
 - D. Park Rules
 - Soccer Fields Wayfinding
- **Replacement Park Rules/Info Sign (2)**
 - E. Park Rules
 - Park Info/Events
 - F. Park Rules
- ▲ **Proposed Pedestrian Wayfinding Sign (1)**
 - G. BBQ Grills
 - Concession Stand
 - Baseball/Softball Fields
- ▲ **Replacement Mile Marker (3)**
- **Existing Sign to Remain (1)**
- ⬠ **Existing Sign/Kiosk to be Replaced (1)**

Sports & Recreation Park - Proposed Signage Locations (Quantity)

Disclaimer:
This document represents design progress and its provision, either electronic or hard copy, is to communicate design intent only. Original and published work may not be duplicated, used, or disclosed without the written consent of Studio16:19.



- **Replacement Vehicular Monument Sign (1)**
A. Primary identification
- **Replacement Park Rules/Info Sign (4)**
B. Park Rules & Parking Info
C. Park Info/Events
D. Solstice Circle Info Sign
- ▲ **Interpretive Trail Marker (7)**
E. (Cross Country Trail) Chimney Swift Trail Sign
F. (Nature Trail) Grassland Interpretive Trail Sign
G. (Nature Trail) Wetland Interpretive Trail Sign
H. (Peace Trail) Peace Monument Trail Sign
J. (Woodland Trail) Forest Interpretive Trail Sign
K. (Prairie Trail) Prairie Interpretive Trail Sign
L. (Bird Watching Trail) Bird Watching Trail Sign
- ▲ **Proposed Pedestrian Wayfinding Sign (14)**
Ex. Nature Trail
Cross Country Trail
- ▲ **Replacement Pedestrian Wayfinding Sign (9)**
Ex. Map/Nature Trail
Peace/Woodland Trail
- ▲ **Replacement Mile Marker (5)**
- **Existing Signs to Remain (4)**
- **Existing Signs to be Removed (2)**
- ⬠ **Existing Sign/Kiosk to be Replaced (1)**

Charro Ranch Park - Proposed Signage Locations (Quantity)

Disclaimer:
This document represents design progress and its provision, either electronic or hard copy, is to communicate design intent only. Original and published work may not be duplicated, used, or disclosed without the written consent of Studio16:19.



CHARRO RANCH
ENTRANCE MONUMENT SIGN



CHARRO RANCH
INFO KIOSK



CHARRO RANCH
INFO SIGNS



CHARRO RANCH
SOLSTICE CIRCLE INFO SIGN



CHARRO RANCH
CHIMNEY SWIFT INFO SIGN



CHARRO RANCH
BLACKJACK OAK INFO SIGN



CHARRO RANCH
POST OAK INFO SIGN



CHARRO RANCH
TX PERSIMMON INFO SIGN



CHARRO RANCH
W. CHINABERRY INFO SIGN



CHARRO RANCH
BIRD VIEW TRAIL SIGN



CHARRO RANCH
TRAIL SIGN



CHARRO RANCH
TRAIL SIGN



CHARRO RANCH
TRAIL SIGN



CHARRO RANCH
TRAIL SIGN



CHARRO RANCH
TRAIL SIGN

Appendix: Sign Inventory Photo Array for Reference

Disclaimer:
This document represents design progress and its provision, either electronic or hard copy, is to communicate design intent only. Original and published work may not be duplicated, used, or disclosed without the written consent of Studio16:19.



CHARRO RANCH TRAIL SIGN



CHARRO RANCH TRAIL SIGN



CHARRO RANCH MILE MARKER 0.00



CHARRO RANCH MILE MARKER 0.25



CHARRO RANCH MILE MARKER 0.50



CHARRO RANCH MILE MARKER 0.75



CHARRO RANCH MILE MARKER 1.00



SPORTS & REC. PARK ENTRANCE MONUMENT SIGN



SPORTS & REC. PARK INFO KIOSK



SPORTS & REC. PARK INFO SIGN



SPORTS & REC. PARK INFO MONUMENT (TO REMAIN)



SPORTS & REC. PARK MILE MARKER 0.00



SPORTS & REC. PARK MILE MARKER 0.25



SPORTS & REC. PARK MILE MARKER 0.25



VETERANS PARK ENTRANCE MONUMENT SIGN

Disclaimer: This document represents design progress and its provision, either electronic or hard copy, is to communicate design intent only. Original and published work may not be duplicated, used, or disclosed without the written consent of Studio16:19.

Appendix: Sign Inventory Photo Array for Reference



VETERANS PARK
INFO SIGN (TO REMAIN)



VETERANS PARK
INFO SIGN (TO REMAIN)



VETERANS PARK
INFO SIGN (TO REMAIN)



FOUNDERS PARK ENTRANCE
MONUMENT SIGN (TO REMAIN)



FOUNDERS PARK
INFO KIOSK



FOUNDERS PARK
INFO SIGN



FOUNDERS PARK
INFO MONUMENT (TO REMAIN)



FOUNDERS PARK
INFO MONUMENT (TO REMAIN)



RANCH PARK ENTRANCE
MONUMENT SIGN (TO REMAIN)



RANCH PARK
TRAIL SIGN

Appendix: Sign Inventory Photo Array for Reference

Disclaimer:
This document represents design progress and its provision, either electronic or hard copy, is to communicate design intent only. Original and published work may not be duplicated, used, or disclosed without the written consent of Studio16:19.