

City of Dripping Springs - PCI Road Evaluation Map



DRIPPING SPRINGS
Texas

2026 Road Evaluation Project

The Pavement Condition Index (PCI) is a standardized, numerical rating between 100 and 0 used to quantify the surface condition of pavement assets. A PCI rating of 100 represents a perfect, newly constructed surface, while a lesser score indicates a variable degree of failing or degraded road conditions.

Legend

PCI Evaluation Rating

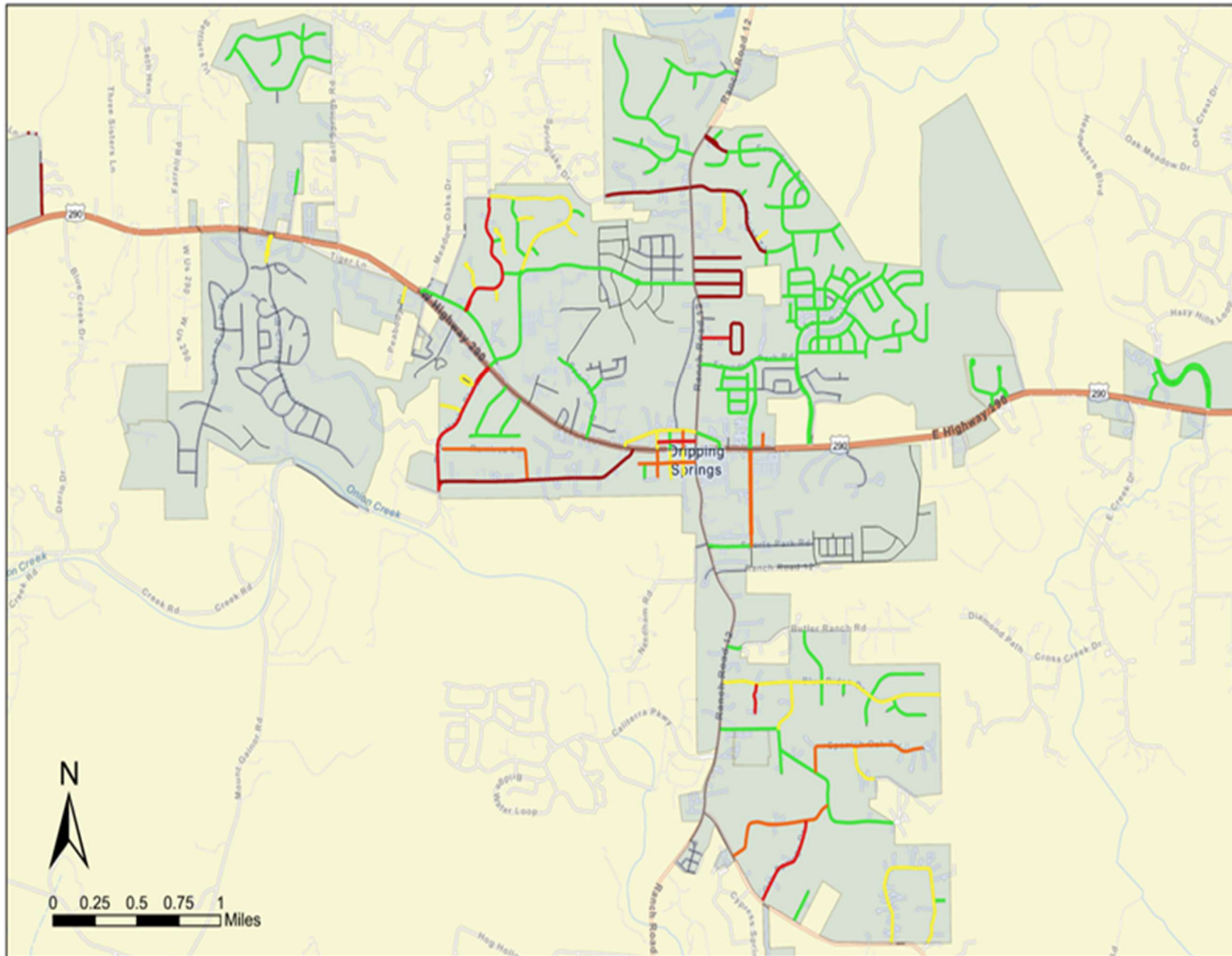
- 100-90
- 89-80
- 79-70
- 69-60
- 59 and Below

Road Evaluations conducted December 2025.

Prepared By:



0 0.25 0.5 0.75 1
Miles



Sources: Esri, TomTom, Garmin, FAO, NOAA, USGS, (c) OpenStreetMap contributors, and the GIS User Community