

DETAIL "A"
1" = 10'

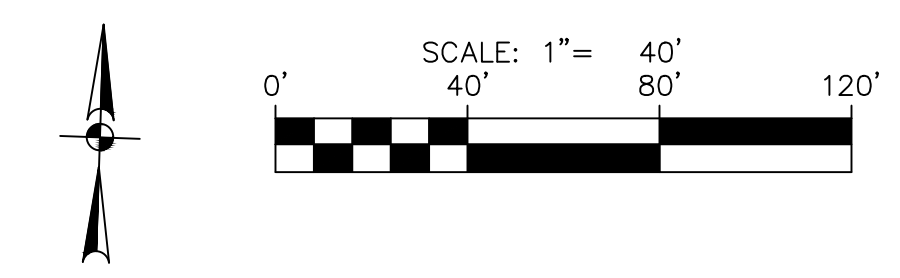
1. TREES SHOWN ON HERE, WERE LOCATED ON MONTH XX, 20XX.

PRIOR TO CONSTRUCTION, CONTRACTOR SHALL VERIFY EXISTING UTILITY INVERT, LOCATION AND SIZE AND NOTIFY ENGINEER IMMEDIATELY IF CONCERNS ARISE REGARDING THE HORIZONTAL OR VERTICAL CONFLICTS.

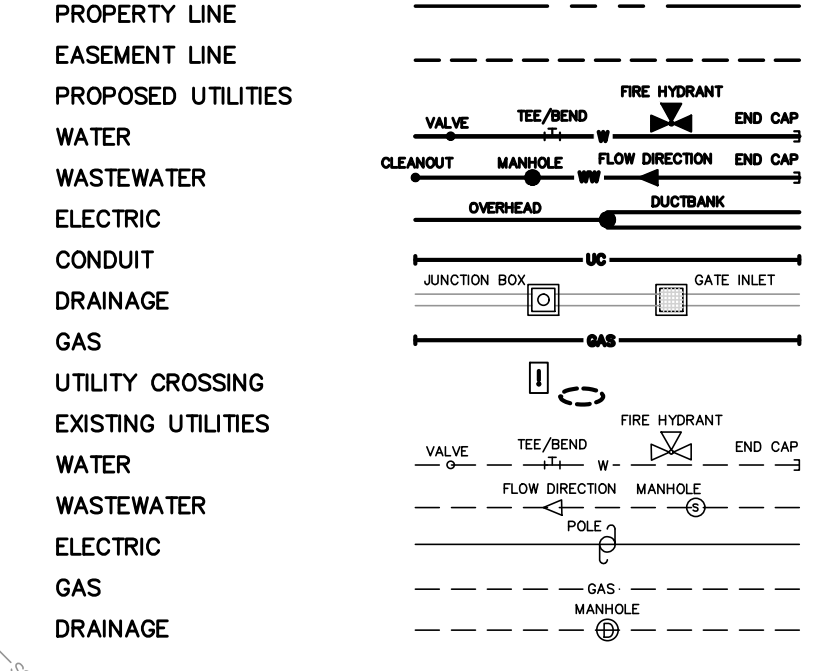
TELECOM KEYED NOTES

- E1 1-1/4" TRANSFORMER REF. MEP PLANS
- E2 1-PULL BOX REF. MEP PLANS
- E3 SECONDARY PULL BOX REF. MEP PLANS

- | | |
|--|--|
| W0 PRIVATE LIFT STATION
8" INV IN=1140.14 | W6 8"X8" WYE, M.J. |
| W1 WW MH-A1 DROP MANHOLE
TOP=1150.08 | W7 8"X8" TEE, M.J.
1-8" GATE VALVE
1-6" VALVE BOX, COMPLETE |
| W2 WW MH-A2
TOP=1149.95 | W8 12"X1.5" TAPPING SADDLE
1-1" COPPER PIPE - CUT AS REQ.
±27 LF ~ 1.5" IRR
1-1.5" GATE VALVE, MJ
1-6" VALVE BOX, COMPLETE |
| W3 WW MH-A3
TOP=1148.40 | W9 8"X2" FIRE FLOW METER |
| W4 WW CO-A5
6" CLEANOUT
INV=1144.00 | W10 1-8" DOUBLE CHECK DETECTOR
ASSEMBLY AND VAULT |
| W5 WW CO-A6
8" CLEANOUT
INV=1146.00 | W11 REF. MEP FOR CONTINUATION |
| W6 WW WYE-B1
8"X8" WYE
INV=1144.40 | W12 8" 1/32 BEND, M.J. |
| W7 WW CO-B2
8" CLEANOUT
INV=1146.00 | |
| W8 WW MH-B3
TOP=1153.00 | |
| W9 WW MH-B4
TOP=1149.00 | |
| W10 WW MH-B5
TOP=1154.00 | |
| W11 WW MH-C1
4" INV IN=1154.16
8" INV OUT=1153.82 | |
| W12 WW MH-C2
8" INV IN=1153.55
8" INV OUT=1153.45 | |
| W13 WW MH-C3
TOP=1148.40 | |
| W14 WW MH-C4
TOP=1148.40 | |
| W15 EXISTING WW MANHOLE
PROP 8" INV IN=1153.42
EXIST 15" INV IN=1152.84
EXIST 15" INV OUT=1152.74 | |



LEGEND

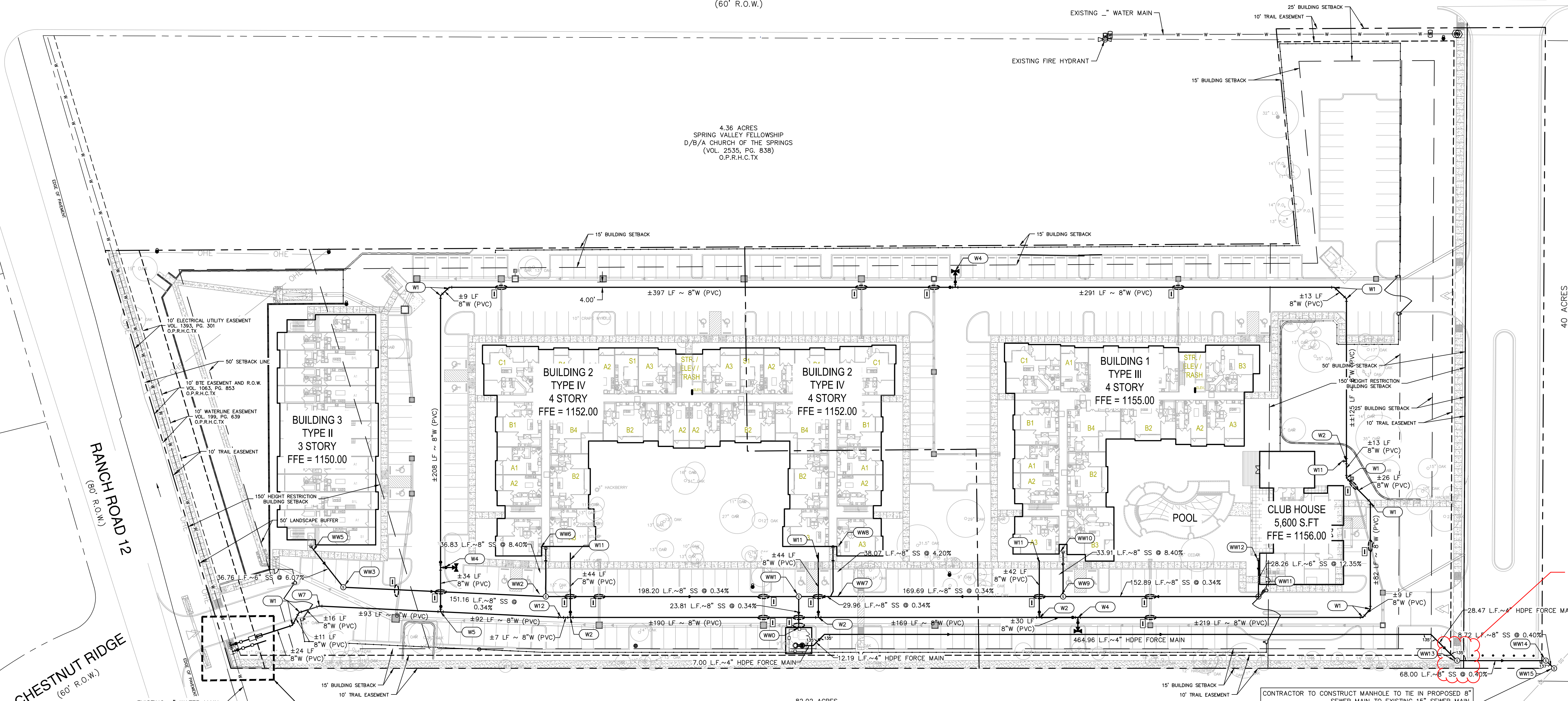


SPORTS PARK ROAD
(60' R.O.W.)

S. ROB SHELTON BOULEVARD
(60' R.O.W.)

4.36 ACRES
SPRING VALLEY FELLOWSHIP
D/B/A CHURCH OF THE SPRINGS
(VOL. 2535, PG. 838)
O.P.R.H.C.TX

40 ACRES
CITY OF DRIPPING SPRINGS
VOL. 1452, PG. 671
O.P.R.H.C.TX



CONTRACTOR TO CONSTRUCT MANHOLE TO THE IN PROPOSED 8" SEWER MAIN TO EXISTING 15" SEWER MAIN, VERIFY INVERTS PRIOR TO CONSTRUCTION AND NOTIFY ENGINEER IMMEDIATELY OF ANY DISCREPANCIES

82.02 ACRES
VIKTOR KOPPONEN AND
SIRKKA KOPPONEN
VOL. 1265, PG. 776
O.P.R.H.C.TX

PAPE-DAWSON ENGINEERS

SAN ANTONIO | AUSTIN | HOUSTON | FORT WORTH | DALLAS
2000 NW LOOP 410 | SAN ANTONIO, TX 78213 | 210.375.9000
TEXAS ENGINEERING FIRM #470 | TEXAS SURVEYING FIRM #10028800

AHC DRIPPING SPRINGS
OVERALL UTILITY PLAN

May 20, 2021

PERMIT SET

SHEET: 11 OF 55
PD JOB: 51221-00

27110 RANCH ROAD 12
DRIPPING SPRINGS, TX
HPA #20406

Date: May 20, 2021, 8:25am User ID: GMaenius
File: H:\Projects\51221\00 Design\Civil\01-5122100.dwg

HUMPHREYS & PARTNERS ARCHITECTS, L.P.
5339 Alpha Rd., Suite 300, Dallas, TX 75240 | 972.701.9636 | www.humphreys.com

ALLEN HARRISON COMPANY