



Chimney Swift Tower

DSRP

Alexander Seshan, Life Scout Troop 280, Sophomore at DSHS



Background on the Chimney Swift

The Chimney Swift is a threatened species of bird that eats harmful and invasive insects, such as the red imported fire ant and the clover leaf curculio. The Chimney Swifts need towers because like all swifts they cannot perch. They can only climb vertical surfaces, so their nests have to be vertical like the picture below.

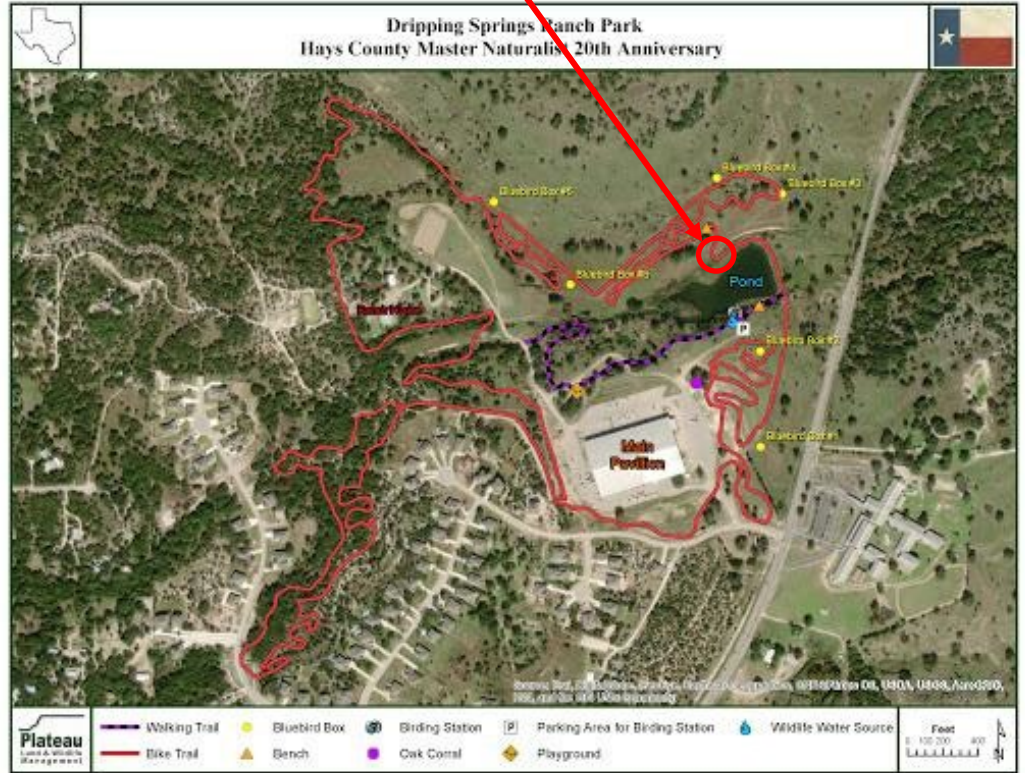


The Chimney Swift Tower

The chimney swift tower is designed such that the chimney swift can fly down into the tower and build a nest on the inner sides of the tower. The tower currently at Dripping Springs Ranch Park is 12 feet tall.



Dripping Springs Ranch Park



Work Weekends

Weekend 1

On the first weekend we constructed everything needed to bring to DSRP and start working on the project.

Weekend 2

On the second weekend we dug the foundation and got the bottom piece of the tower in.

Weekend 3

On the third weekend we went out to DSRP to finish the tower and put the top two pieces on the tower

Weekend 4

On the fourth weekend I went out to complete the tower with a coat of paint.



First Eagle workday at my house assembling the tower



Second workday onsite at DSRP. We're making the foundation and tower bottom.



Third workday finishing the tower



Third workday finishing the tower

