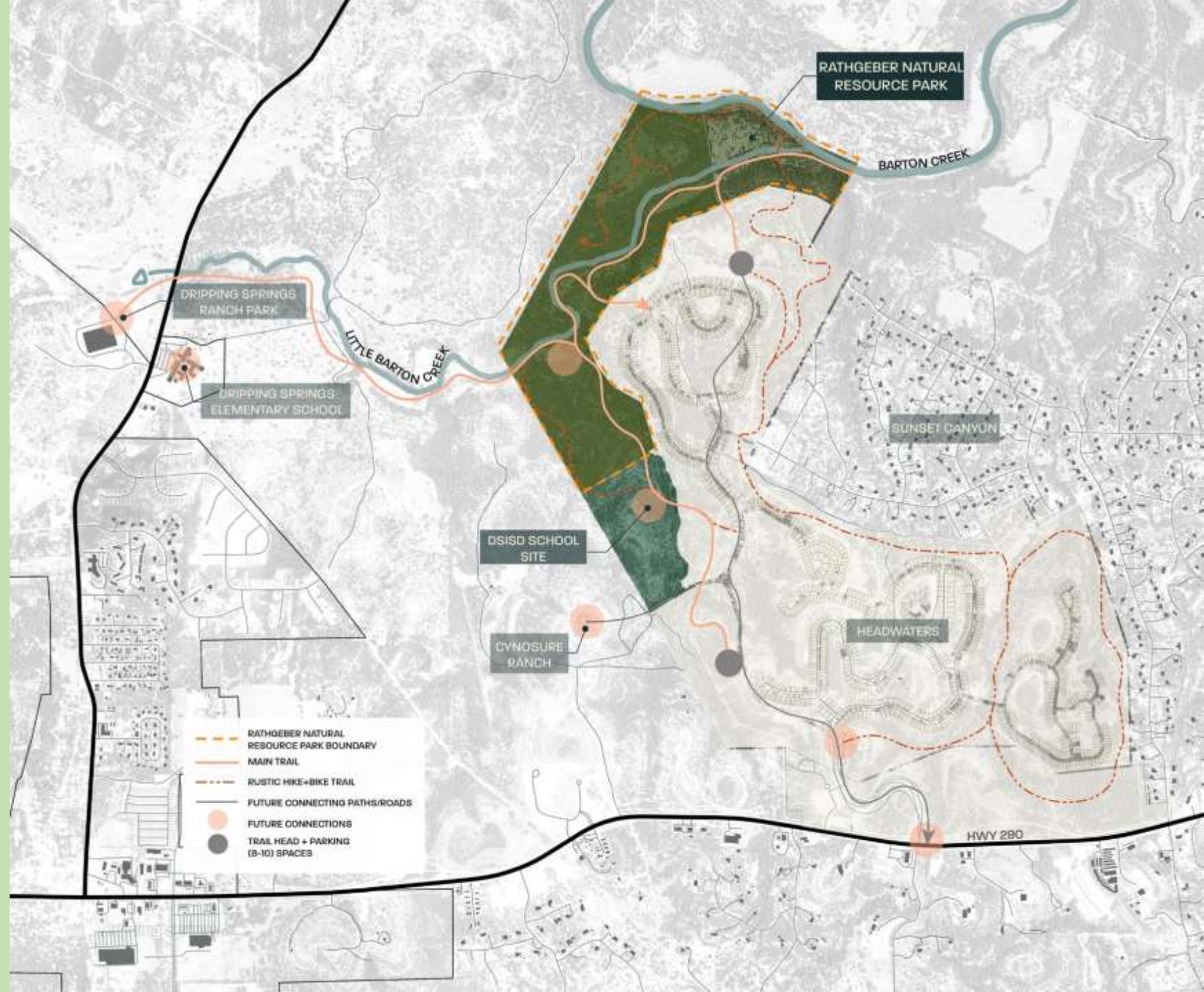
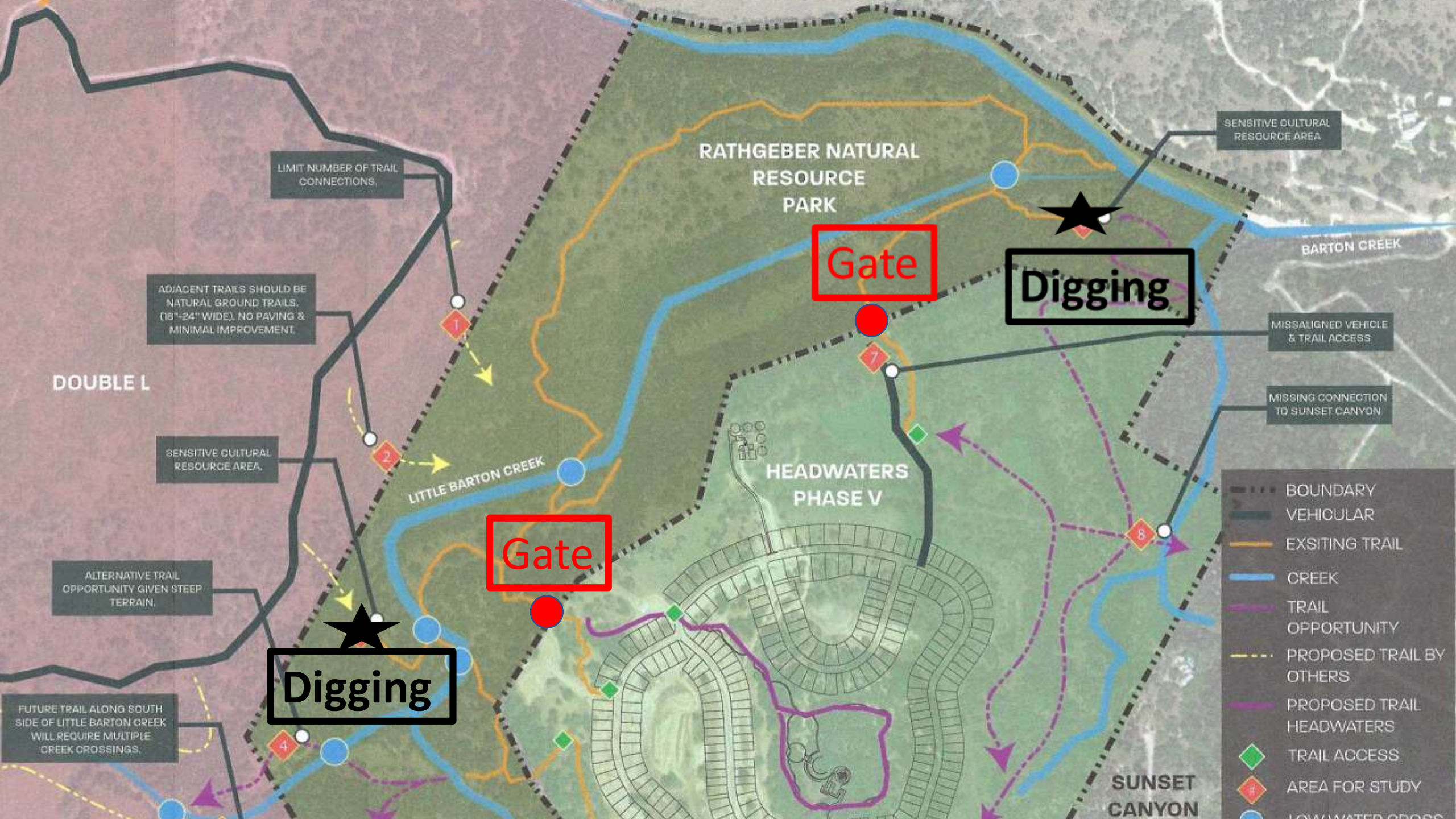


Rathgeber Natural Resource Park

- 300 Acres
- Deeded to the City from Dick Rathgeber and Rathgeber Investment Company, LTD.
- Barton Creek and Little Barton Creek
- Adjacent to Headwaters, Double L and Wild Ridge developments
- DSISD Property to the South
- Robert Ellis – Volunteer Wildlife Manager
- 2023 Budget (Proposed):
 - \$100,000 Phase I Master Plan (Site Analysis and Vision Plan)
 - \$900 Cameras
 - \$10,000 Fencing





Evidence of Digging for Artifacts



Gates Needed at Entry Points



South Entry



North Entry



Other Sites on Property