



# US 290 from Oak Hill to Dripping Springs Planning and Feasibility Study

## UPDATE

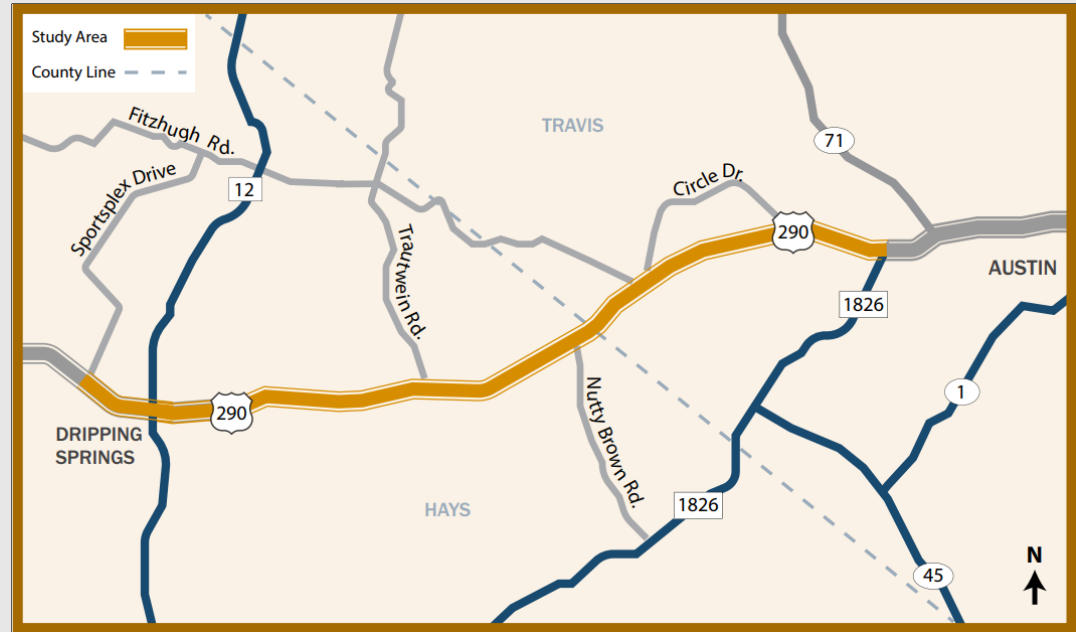
August 24, 2020

August 24, 2020



## STUDY CORRIDOR

- US 290 from RM 1826 in southwest Austin through the City of Dripping Springs to Sportsplex Drive.
- The corridor spans Travis and Hays counties



## STUDY PURPOSE

- Identify long-term safety and mobility solutions
- Develop right-of-way needs

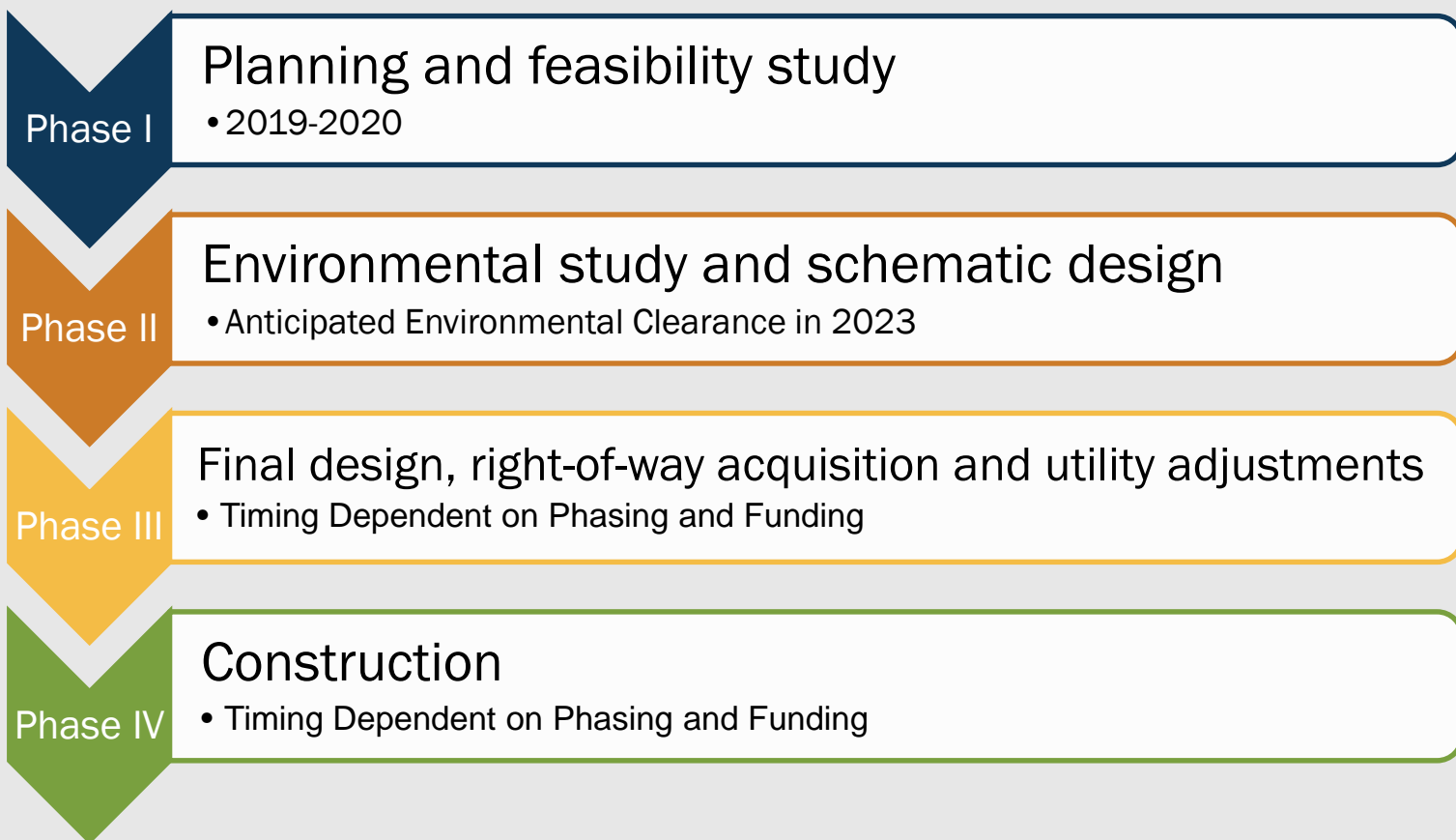
## STUDY TIMELINE: 2019-2020



- Improve **safety** in the corridor
- Improve **mobility** in the corridor
- Enhance **accessibility** for residents and businesses
- Improve **emergency response times**
- Support **economic development**
- **Minimize impacts** to the community and natural environment



WE ARE HERE



*Advancement from phase to phase is contingent upon the outcome of the previous phase and the availability of funding.*



## Our Study



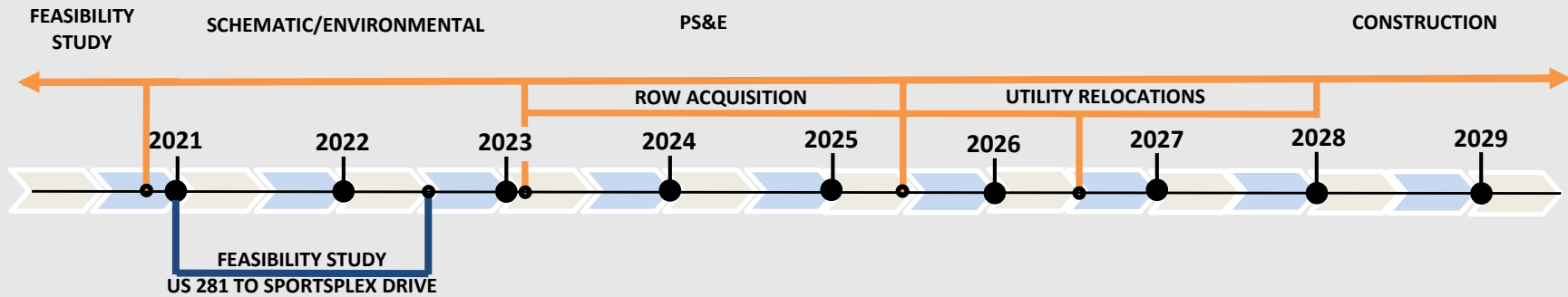
Upcoming TxDOT study for improvements to US 290 between Sportsplex Drive to US 281

The approved Oak Hill Parkway Project, anticipated to open to traffic as early as 2025

+ Ongoing **TxDOT traffic study** for interim safety projects



# US 290 West Improvements Timeline



## Notes:

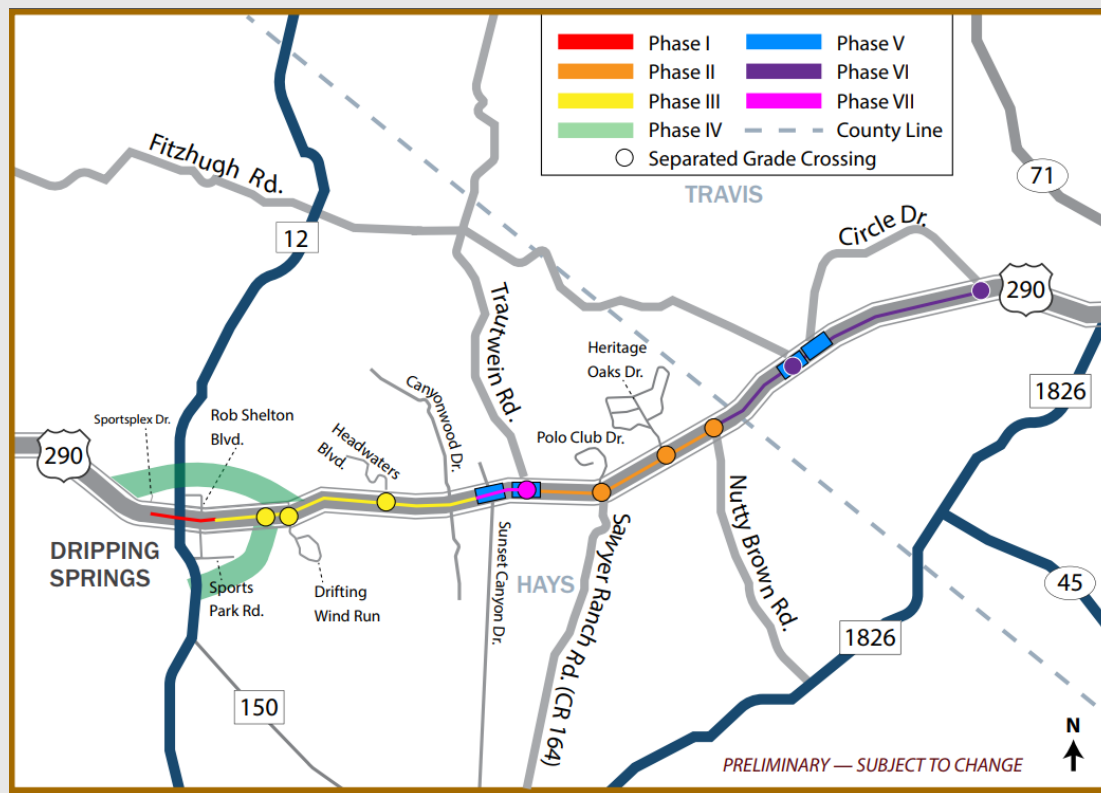
1. Construction start contingent on funding, ROW, and utility relocations
  2. Project could be phased due to funding constraints
- PS&E – Plans, Specifications, and Estimates (Final Design)  
ROW – Right of Way

**+ Ongoing TxDOT traffic study for interim safety projects**



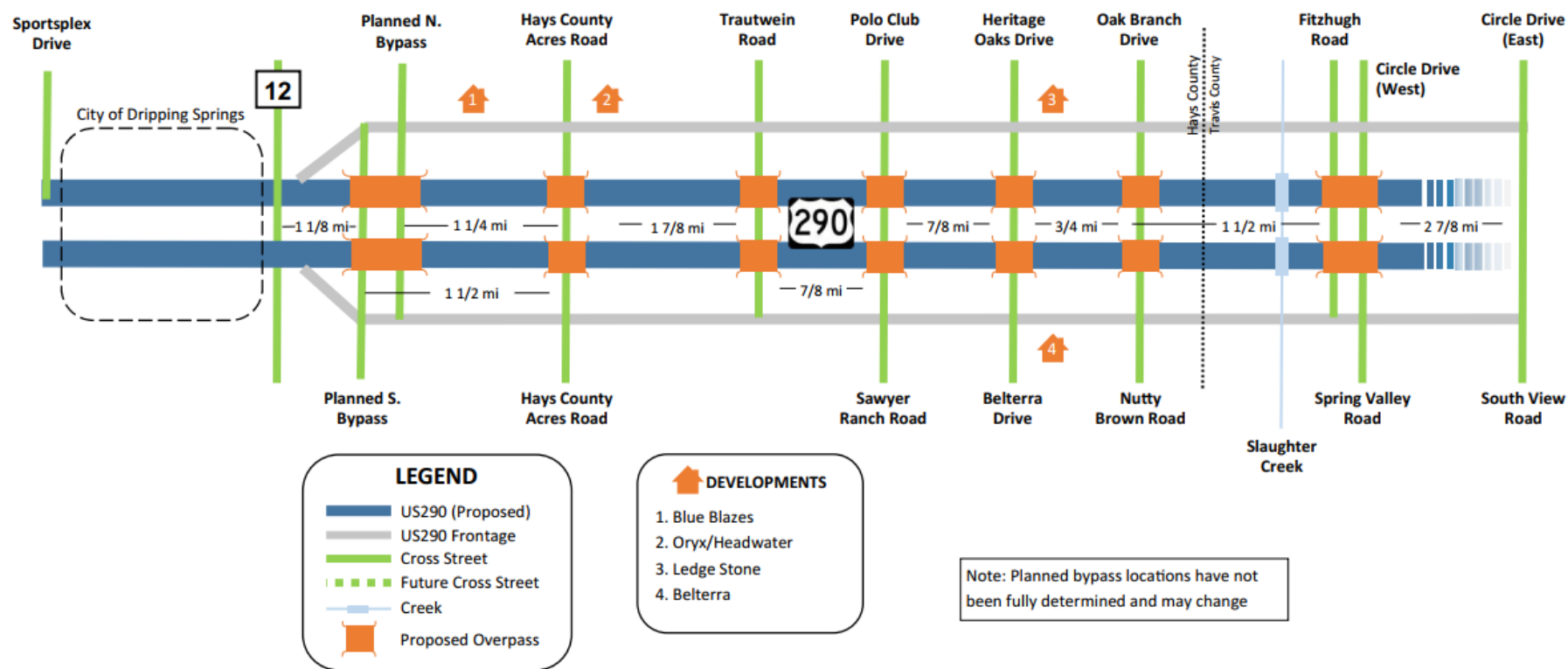
## PROJECT FUNDING

- Funding for constructing the entire corridor to be pursued.
- If not all funding is attained at one time, the alternative is to phase the corridor construction.
  - Less impact to motorists
  - Faster improvements
  - Can target problem areas first





## US 290 West Planning and Feasibility Study

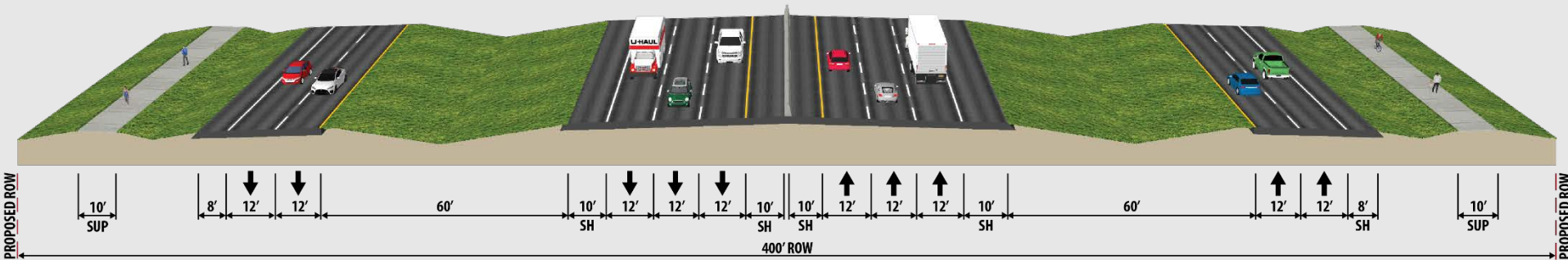




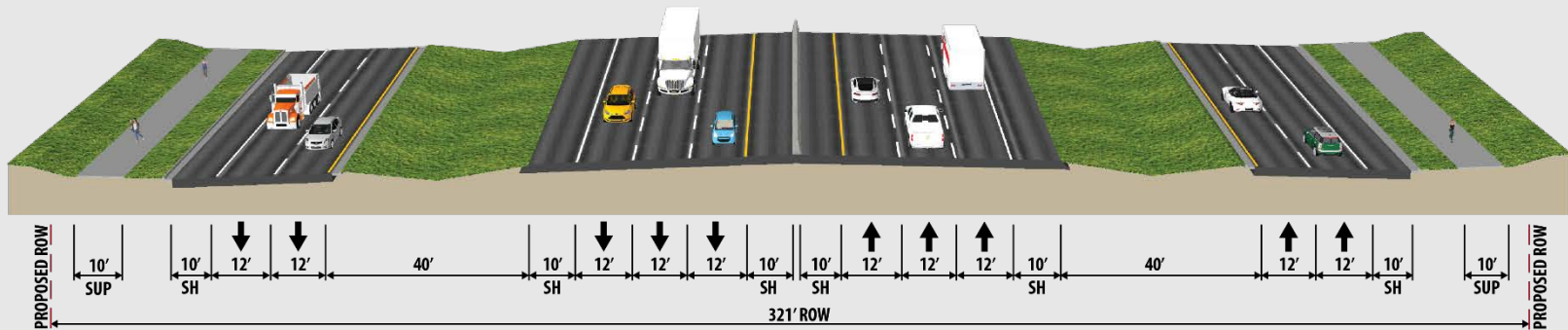
# Proposed Typical Sections – Standard vs. Reduced



## Standard (400 ft)



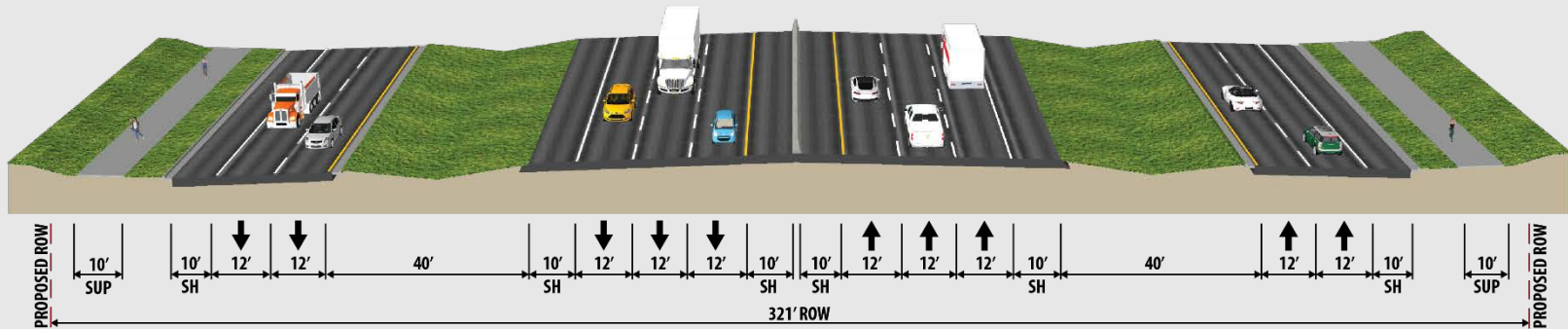
## Reduced (321 ft)



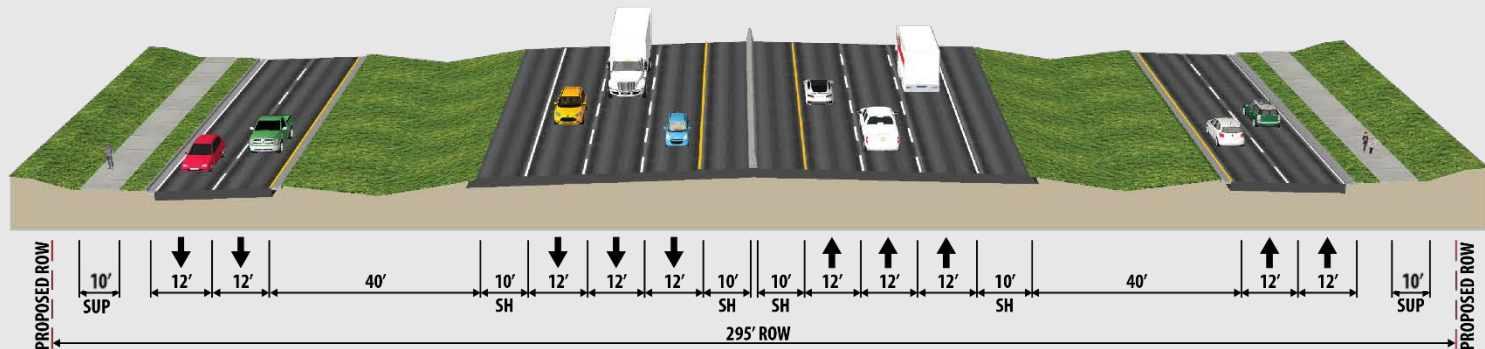
# Proposed Typical Sections – Reduced vs. Minimized



## Reduced (321 ft)



## Minimized (295 ft)





Reduction	Trade Offs
<b>Reduce border between frontage road and main lanes</b>	<ul style="list-style-type: none"> <li>▪ Ditch capacity needs may require adjustment from 6:1 desirable to 4:1 and, although 4:1 is acceptable, 6:1 or flatter is preferred for both errant vehicle performance and slope maintainability</li> <li>▪ Closed drainage system may be required in ditch area depending on calculated discharge.</li> <li>▪ Can constrain ramp design and feasibility both horizontally and vertically.</li> </ul>
<b>Removal of frontage road 10' shoulder</b>	<ul style="list-style-type: none"> <li>▪ 10' Shoulder with 8' buffer between curb and Shared Use Path (SUP) provides clear zone for separation of bicycle/pedestrians on SUP and traffic</li> <li>▪ Removal of shoulders prevents utilization of the shoulder for turning movements</li> </ul>
<b>Reduction to SUP buffer width</b>	<ul style="list-style-type: none"> <li>▪ Reducing the buffer between the SUP and back of curb to 3' to maintain a full width SUP would require a design waiver approval</li> </ul>
<b>Reduced utility corridor</b>	<ul style="list-style-type: none"> <li>▪ Less space for placing proposed utilities and retaining walls that may be required</li> </ul>



# US 290 Ongoing Development Area Locations



Source: Google Earth, 2018





## SITE PLAN



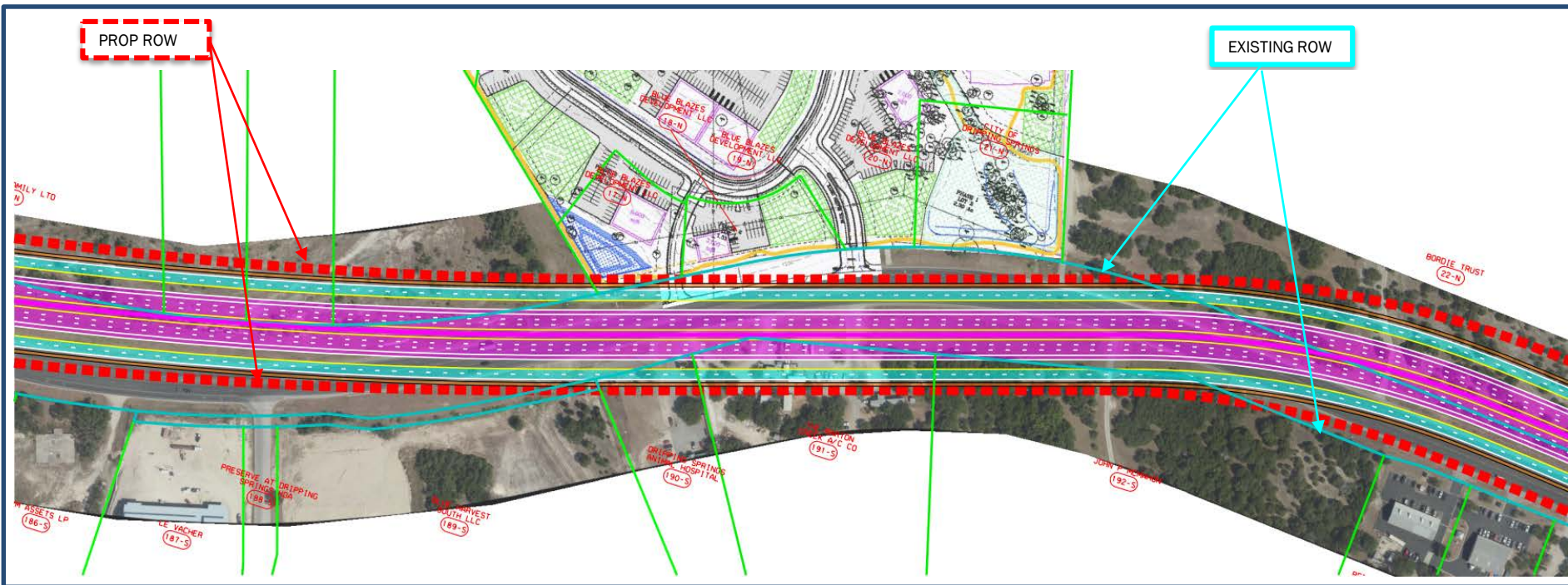
Source: <http://blueblazesdevelopment.com/>, June 2020

## GOOGLE EARTH



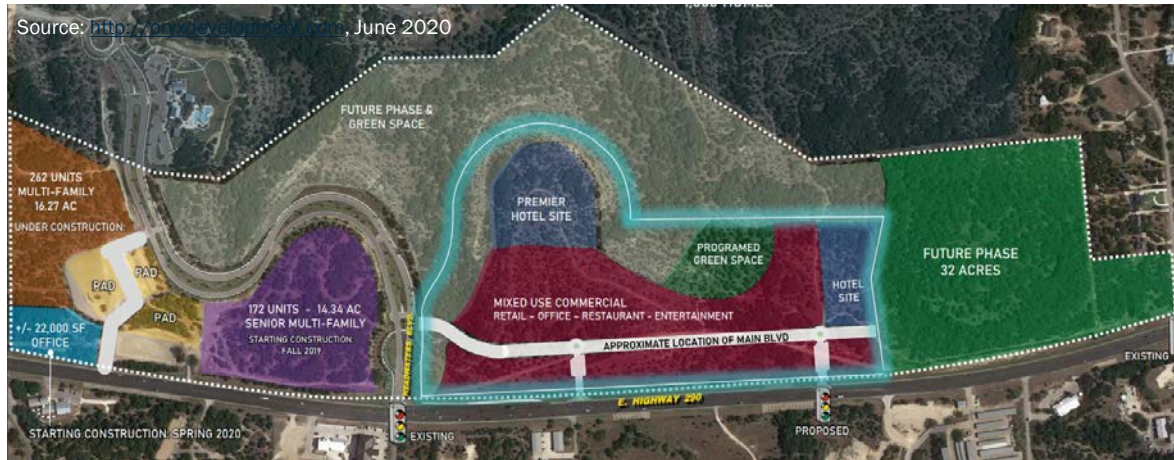
Source: Google Earth, 08/23/2018

# Blue Blazes Development Proposed ROW





# Location #2 Headwaters Development



SITE  
PLAN

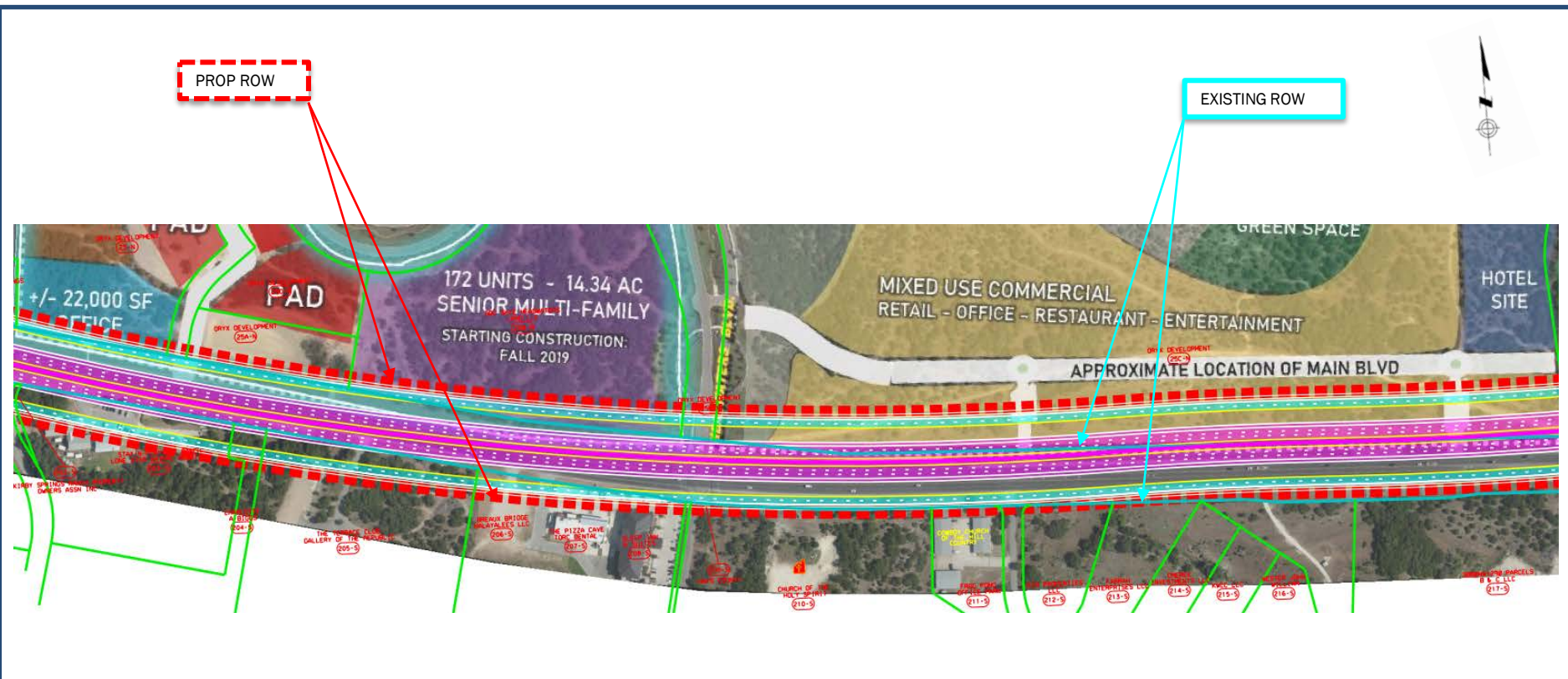
Proposed signal shown is part of  
and is subject to

Source: Google Earth, 08/23/2018



GOOGLE

# Headwaters Development Alternative ROW Comparison

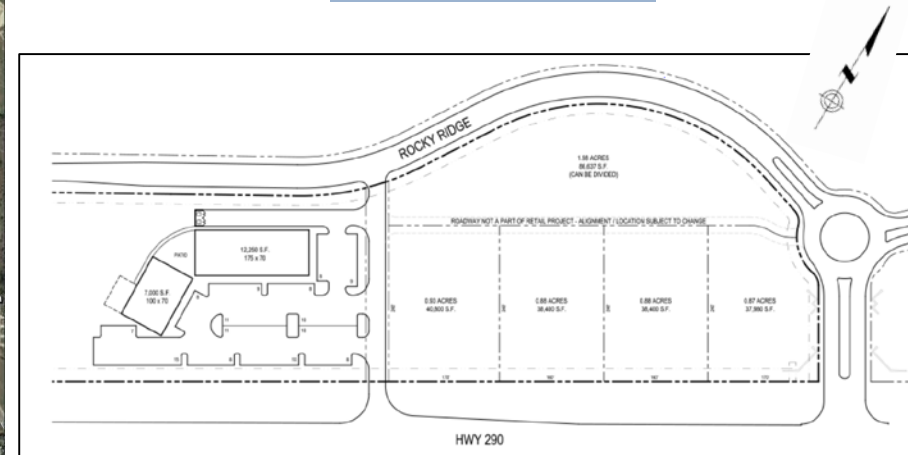




# Location #3 Ledge Stone Development



## SITE PLANS

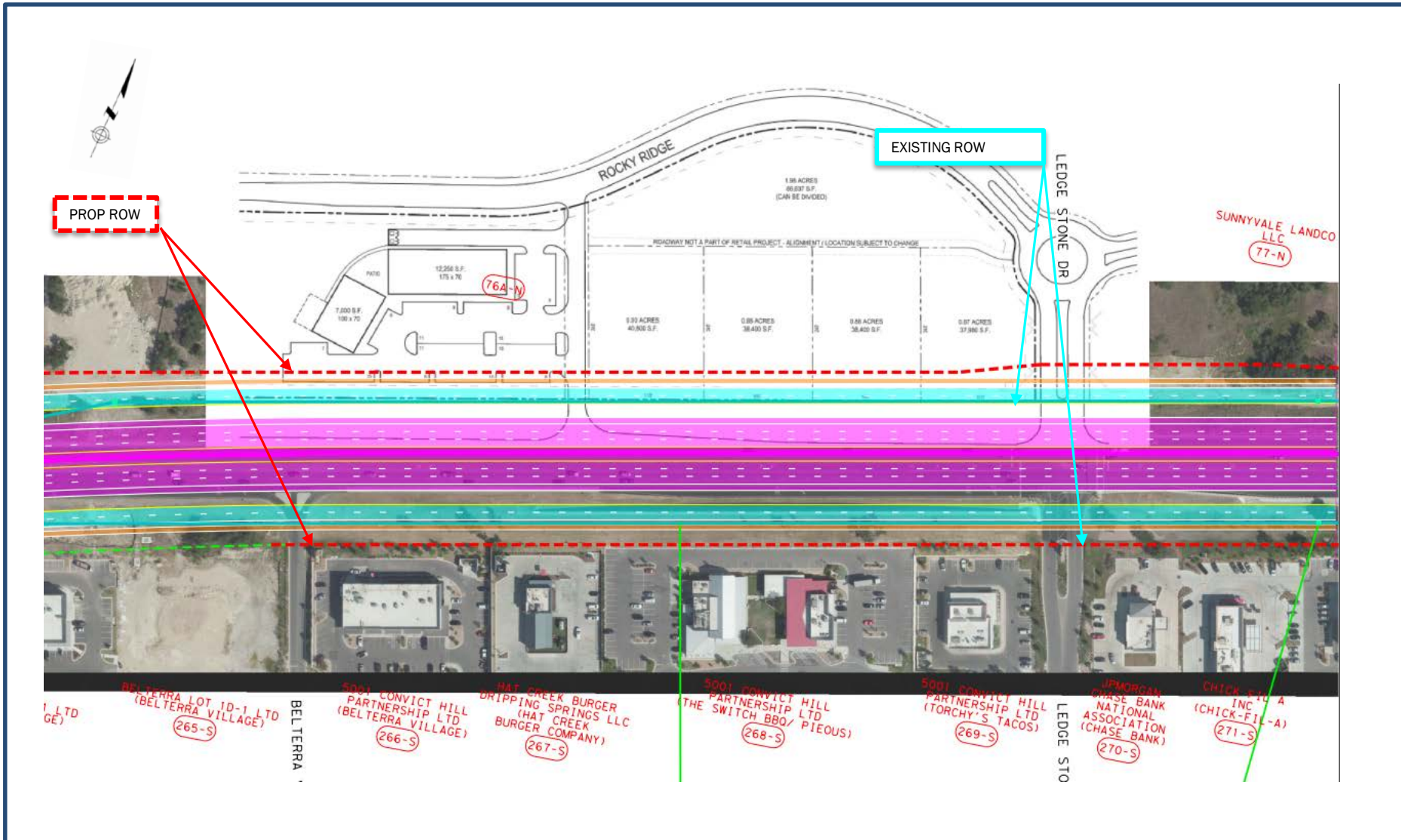


Source: <https://theretailconnection.net/properties/ledge-stone-dripping-springs-tx/>



## GOOGLE EARTH

# Ledge Stone Development Proposed Reduced ROW



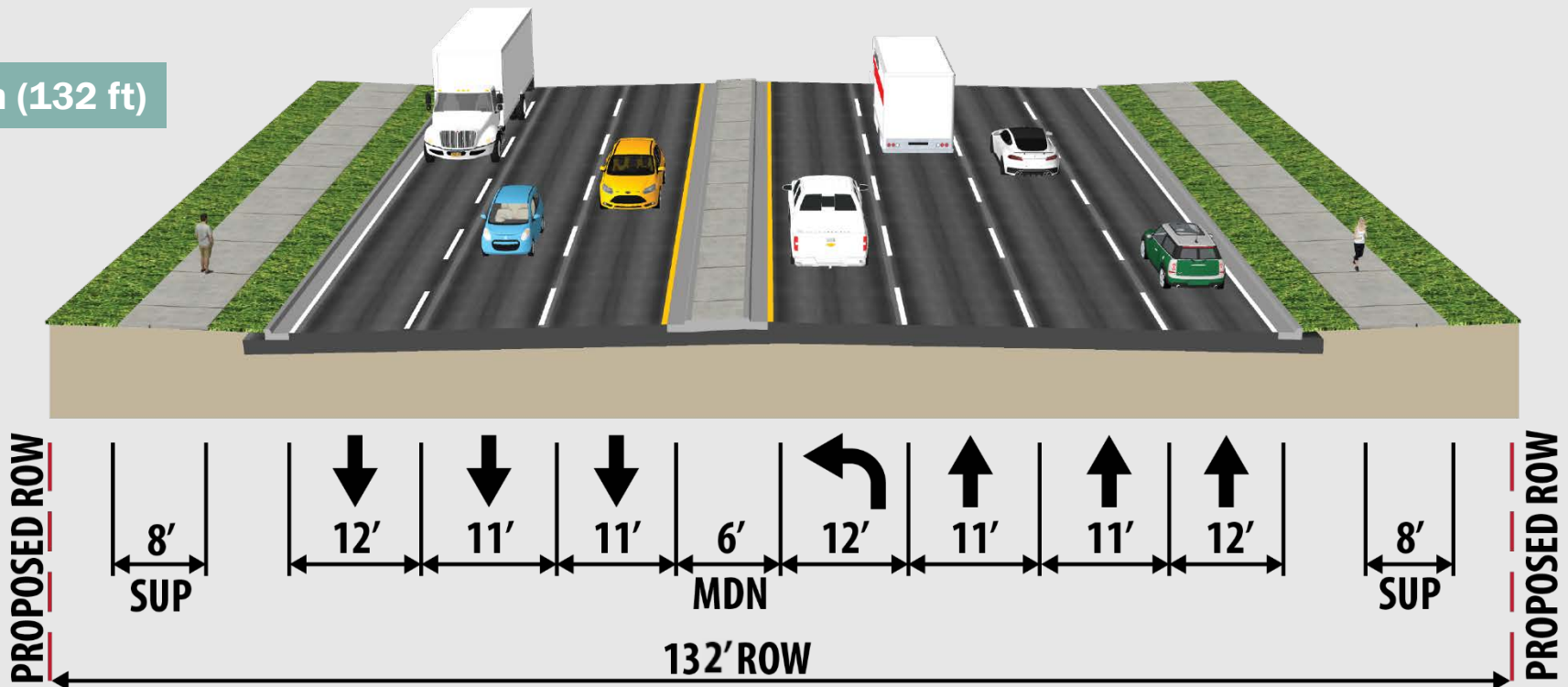
# City of Dripping Springs





**The current plan includes an urban section within the city limits of Dripping Springs.**

Urban (132 ft)





# US 290 Proposed Roadway KMZ Overview

Questions?