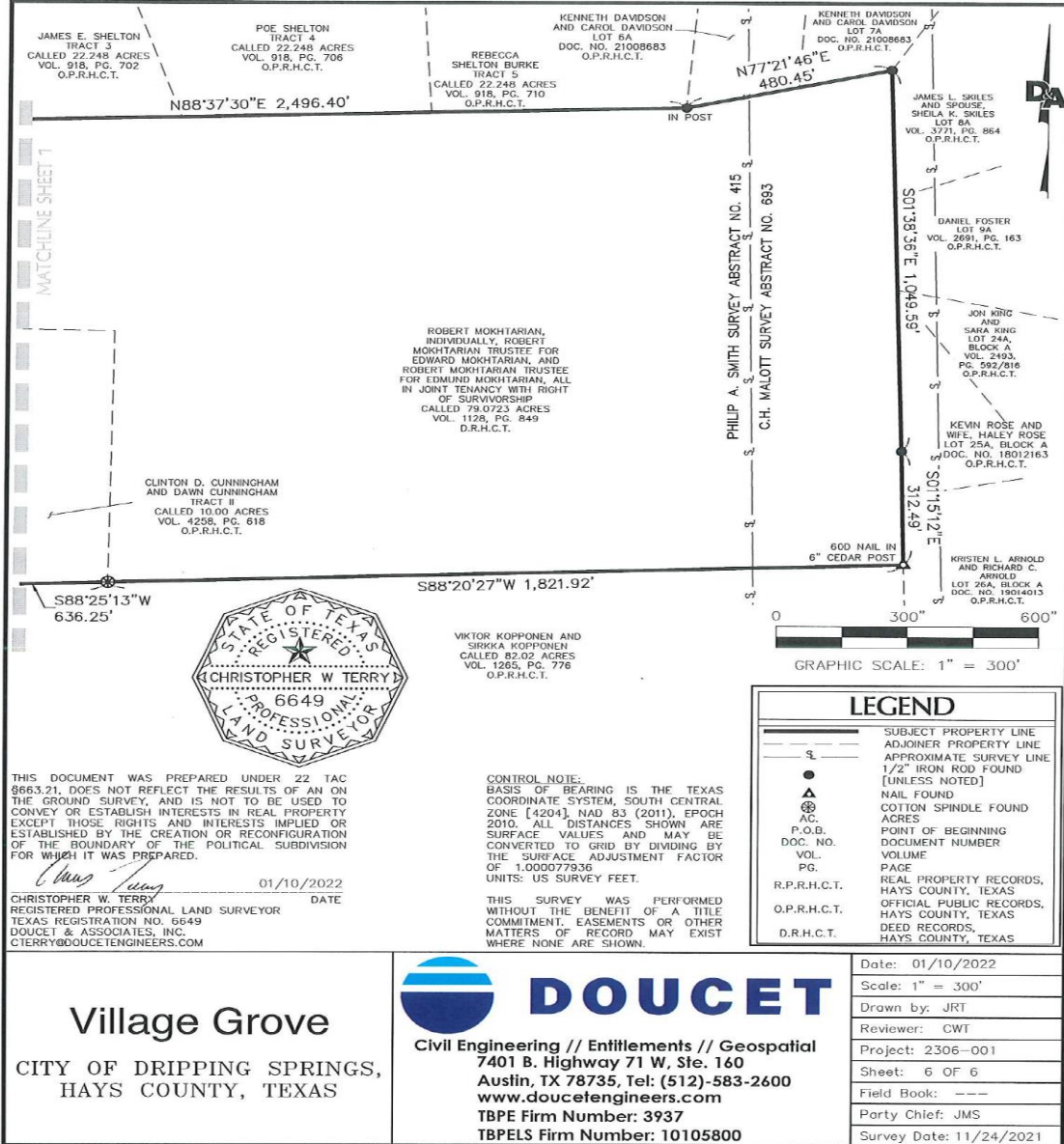


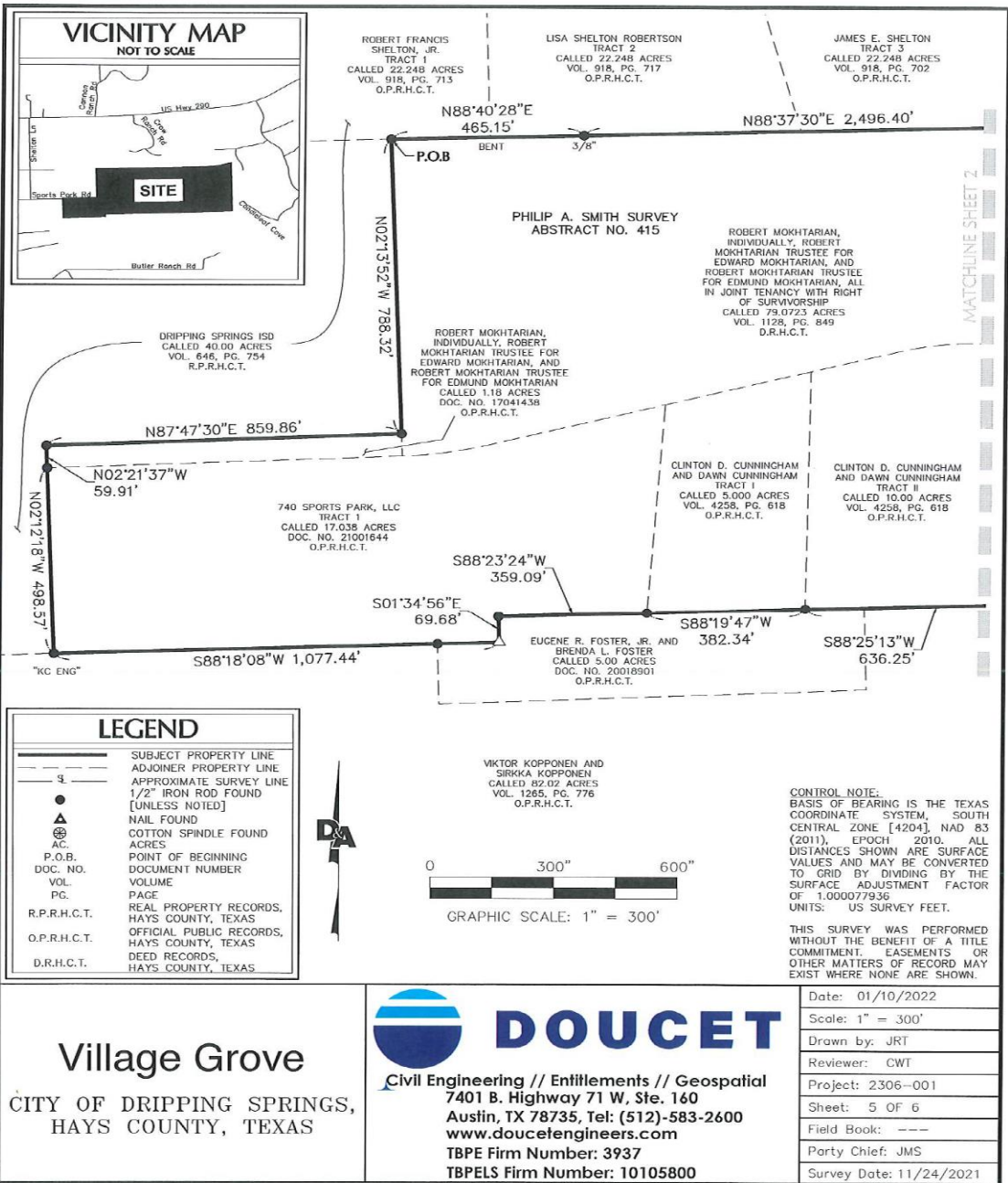
Exhibit A

Survey of the Land



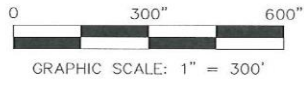
Village Grove
 CITY OF DRIPPING SPRINGS,
 HAYS COUNTY, TEXAS

DOUCET
 Civil Engineering // Entitlements // Geospatial
 7401 B. Highway 71 W, Ste. 160
 Austin, TX 78735, Tel: (512)-583-2600
 www.doucetengineers.com
 TBPE Firm Number: 3937
 TBPELS Firm Number: 10105800



LEGEND

	SUBJECT PROPERTY LINE
	ADJOINER PROPERTY LINE
	APPROXIMATE SURVEY LINE
	1/2" IRON ROD FOUND [UNLESS NOTED]
	NAIL FOUND
	COTTON SPINDLE FOUND
	ACRES
	POINT OF BEGINNING
	DOCUMENT NUMBER
	VOLUME
	PAGE
	REAL PROPERTY RECORDS, HAYS COUNTY, TEXAS
	OFFICIAL PUBLIC RECORDS, HAYS COUNTY, TEXAS
	DEED RECORDS, HAYS COUNTY, TEXAS



CONTROL NOTE:
BASIS OF BEARING IS THE TEXAS COORDINATE SYSTEM, SOUTH CENTRAL ZONE [4204], NAD 83 (2011), EPOCH 2010. ALL DISTANCES SHOWN ARE SURFACE VALUES AND MAY BE CONVERTED TO GRID BY DIVIDING BY THE SURFACE ADJUSTMENT FACTOR OF 1.000077936
UNITS: US SURVEY FEET.

THIS SURVEY WAS PERFORMED WITHOUT THE BENEFIT OF A TITLE COMMITMENT. EASEMENTS OR OTHER MATTERS OF RECORD MAY EXIST WHERE NONE ARE SHOWN.

Village Grove
CITY OF DRIPPING SPRINGS,
HAYS COUNTY, TEXAS

DOUCET
Civil Engineering // Entitlements // Geospatial
7401 B. Highway 71 W, Ste. 160
Austin, TX 78735, Tel: (512)-583-2600
www.doucetengineers.com
TBPE Firm Number: 3937
TBPELS Firm Number: 10105800

Date:	01/10/2022
Scale:	1" = 300'
Drawn by:	JRT
Reviewer:	CWT
Project:	2306-001
Sheet:	5 OF 6
Field Book:	---
Party Chief:	JMS
Survey Date:	11/24/2021