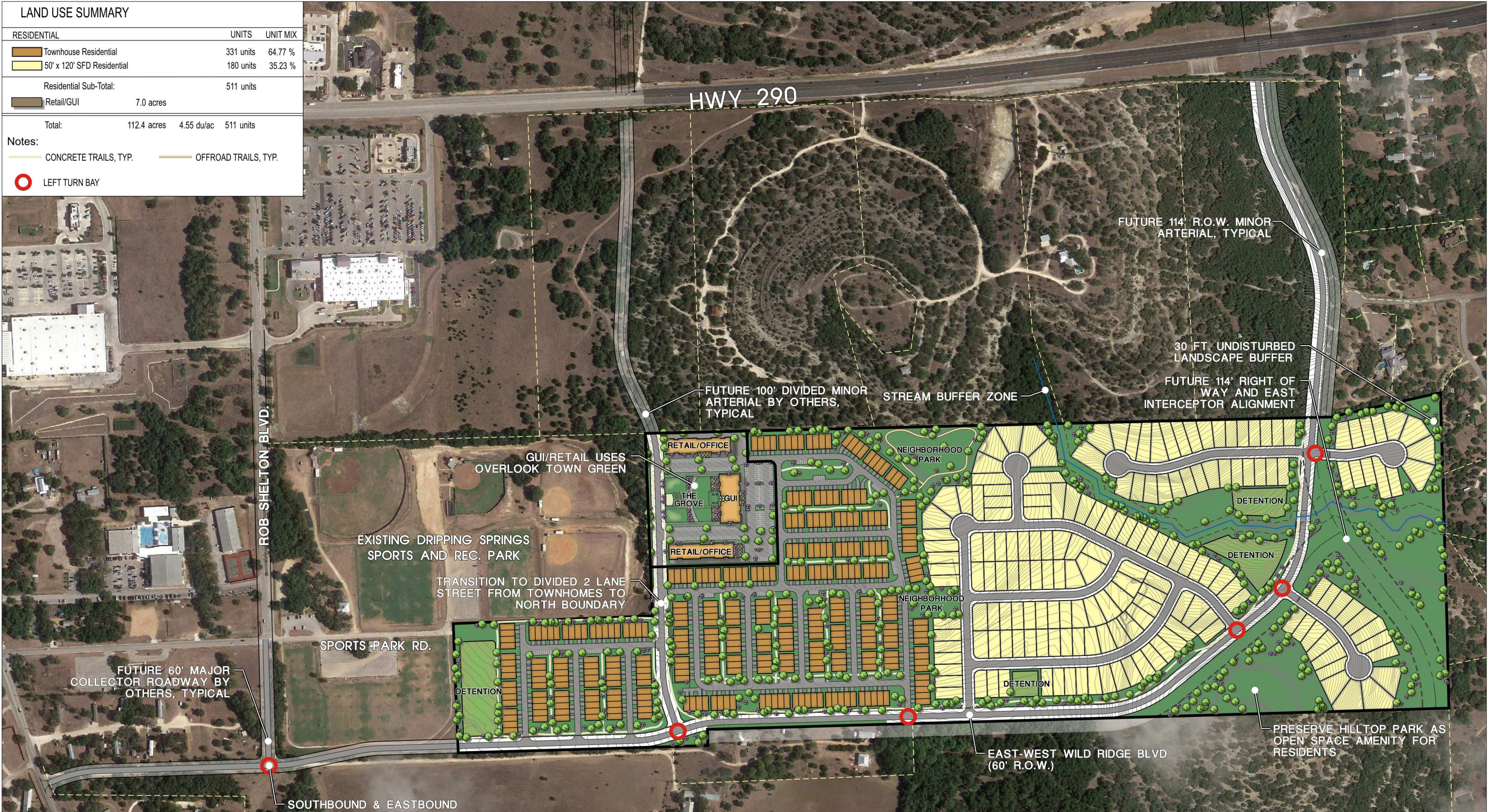


LAND USE SUMMARY			
RESIDENTIAL	UNITS	UNIT MIX	
Townhouse Residential	331 units	64.77 %	
50' x 120' SFD Residential	180 units	35.23 %	
Residential Sub-Total:	511 units		
Retail/GUI	7.0 acres		
Total:	112.4 acres	4.55 du/ac	511 units

Notes:

- CONCRETE TRAILS, TYP.
- OFFROAD TRAILS, TYP.
- LEFT TURN BAY



LOTING PLAN O
VILLAGE GROVE
 DRIPPING SPRINGS, TEXAS

SHEET FILE: I:\210162-DSPA\Cadfiles\PLANNING\Lotting\Lotting O rev 5.dwg
 Base mapping compiled from best available information. All map data should be considered as preliminary, in need of verification, and subject to change. This land plan is conceptual in nature and does not represent any regulatory approval. Plan is subject to change.