
**CITY OF DRIPPING SPRINGS
TRANSPORTATION COMMITTEE
AGENDA**

**MONDAY, AUGUST 25, 2020
3: 30- 5 : 00 PM— VIA ZOOM CONFERENCE**

COMMITTEE MEMBERS:

Interim Chairman – P&Z Comm. Jim Martin

John Pettit

City Council Rep.—Travis Crow

Ben Sorrell – Non-Voting Member

Barrett Criswell

Chad Gilpin, P.E., City Engineer

Sharon Hamilton

INVITED GUESTS:

Hays Co. - Precinct 4 Comm. Walt Smith, County Engineer Jerry Borcharding, P.E., Adam

Leach, EIT DSISD – Pam Swanks, Mike Garcia

TxDOT, Austin District, So. Area Office – Epigmenio Gonzales, P.E., Michelle Romage-Chambers, P.E., Reed Smith, P.E.

CAMPO – Doise Miers

HDR (City Traffic Engineering Consultant) – Rashed Islam, P.E., Leslie Pollack, P.E., Isabella Albino

AGENDA

1. TXDOT

- Project Updates
 - Regarding the signal at 12 and 150, Epi says there is only a protected left due to limited sight distance but adding an additional phase could extend the length of the protected left. Leslie confirms that adding a right turn overlap would extend the length of the protected left.
 - Michelle Romage-Chambers informs the committee that the RM 12 project has let and they expect to begin construction mid to late September.
 - Epi explains that the signal at 290 and Trautwein was worked on together with Hays County. They agreed to let the county to go forward with that project if they put up additional signage saying a sign was coming. That is a temporary signal until the roadway improvements happen on Trautwein. Jim asks if it will be sequenced with the other signals east and west of it. Epi states there is no reason why it would not be.
 - Travis asks for confirmation that sight distance and speed are the factors that are preventing a flashing yellow on the light at 150 and RR 12. Epi confirms and suggests they could lower the speed at that section, which could put them in compliance with the sight distance.
 - Epi says that the hot mix at founders and RR 12 did not meet certain density. They've

reached out to the lab to find an answer. Reed confirms that the densities did not meet their standards and are finding out this week how to move forward.

a. Highway 290 Study Update

- Michelle Romage-Chambers presented the attached item

- Hwy 290 Oak Hill Planning and Feasibility update. The study is from 290 to 1826. They are in the planning and feasibility portion of this project. They are going to wrap it up at the end of this year. Then, they will move into the environmental and schematic portion. They anticipate having environmental clearance by 2023, then they can buy right of way, utilities etc., then move into construction. Each advancement is contingent on funding that is available. They have another feasibility study going west to 281 that is starting soon. Oak Hill should wrap up by 2025, the projects will be overlapping.

- New/Other Project(s) Update

-

2. HDR (Traffic Engineering Consultant)

- Master Transportation Plan Update

-Meeting with Hays County to have them review our plan and see how it aligns has been held. There is a follow meeting scheduled. Currently they are planning for a virtual open house.

- Traffic Symposium Update

-No update. Draft agenda has been started.

- Status of Task Orders

-Still moving forward with current Task Orders

3. CITY OF DRIPPING SPRINGS

- Big Sky—Founders Park Rd and RR 12 Improvement Project Update (Aaron Reed, Public Works Coordinator)
 - Founders Park Road and RR 12 have a punch list. There are issues with their drainage and Striping. The road is open.

- Update on Street Inventory and Condition Assessment Project (Aaron Reed, Public Works Coordinator)
 - Allocated funds to do a major rework of streets. A 5-year plan is being created; they have begun assessing streets to see what needs work.

- Update on TxDOT Grant Projects (Aaron Reed, Public Works Coordinator:
 - a. Sportsplex Project
 - Zoom crashed

 - b. Rob Shelton Project
 - Zoom Crashed

- New Developments (Amanda Padilla, Senior Planner)
 - Heritage Development: Set for approval for September. 595 single family unites. TIA is still under review. They preferred options with fewest parking spots.

 - Cannon PDD: TIA is still being worked on. A timeline is being created at the moment.

 - Double L and Cynosure: TIA for Double L is still under review. Will be a year or 2

4. New Business

5. Adjourn



US 290 from Oak Hill to Dripping Springs Planning and Feasibility Study

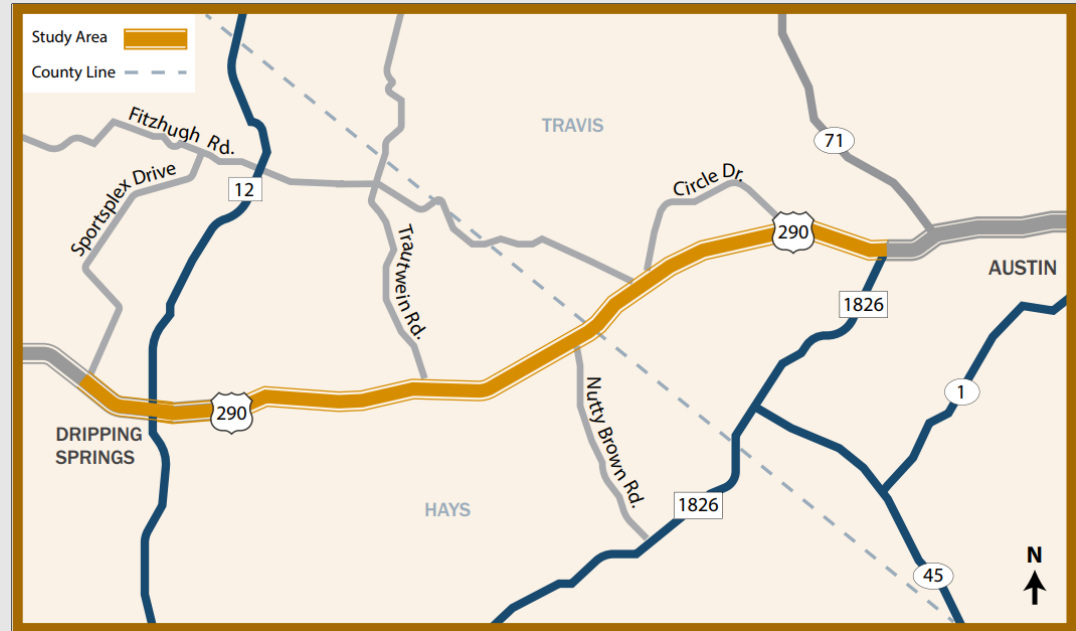
UPDATE

August 24, 2020



STUDY CORRIDOR

- US 290 from RM 1826 in southwest Austin through the City of Dripping Springs to Sportsplex Drive.
- The corridor spans Travis and Hays counties



STUDY PURPOSE

- Identify long-term safety and mobility solutions
- Develop right-of-way needs

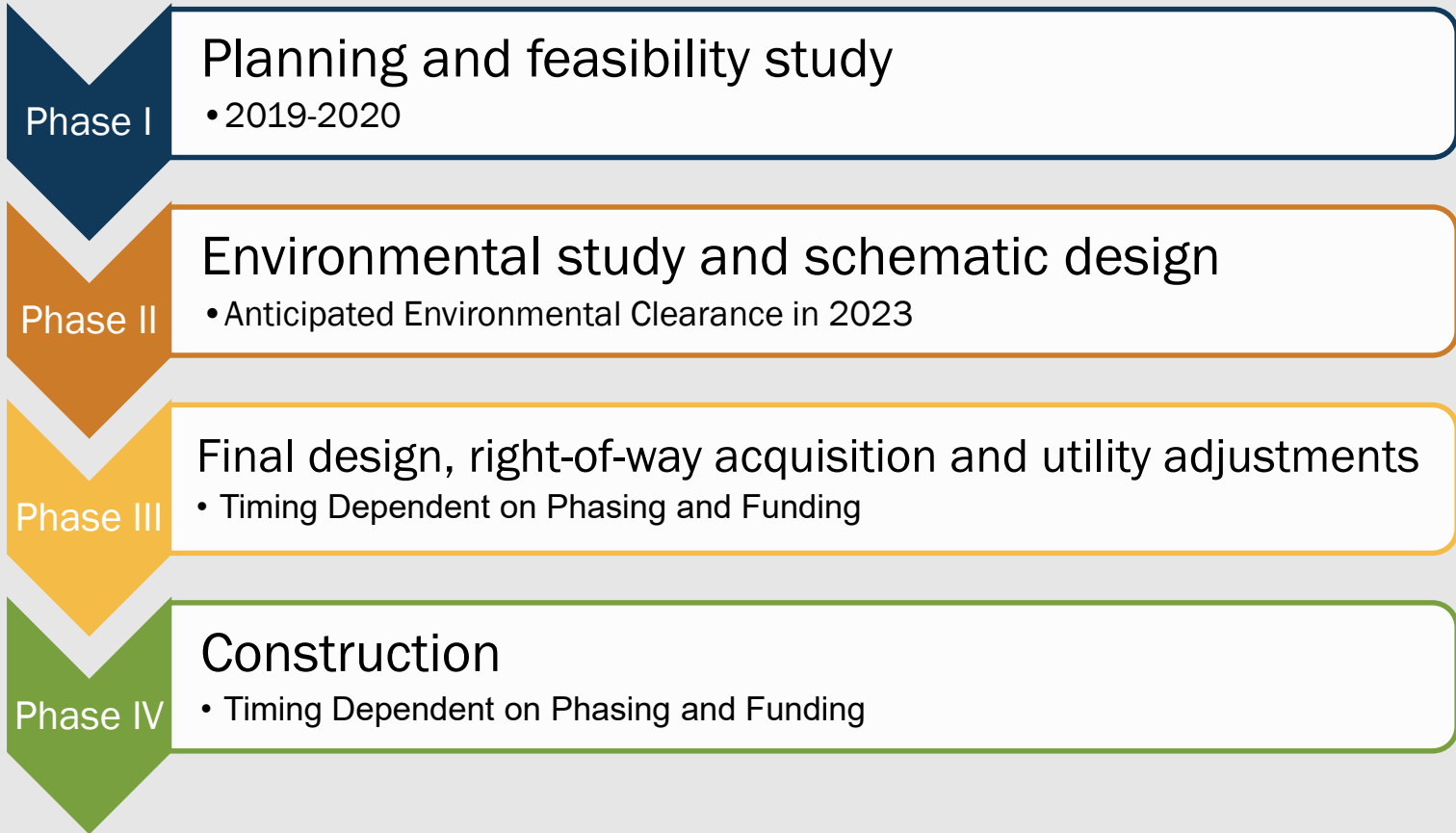
STUDY TIMELINE: 2019-2020



- Improve **safety** in the corridor
- Improve **mobility** in the corridor
- Enhance **accessibility** for residents and businesses
- Improve **emergency response times**
- Support **economic development**
- **Minimize impacts** to the community and natural environment



WE ARE HERE



PUBLIC INVOLVEMENT

Advancement from phase to phase is contingent upon the outcome of the previous phase and the availability of funding.



Our Study



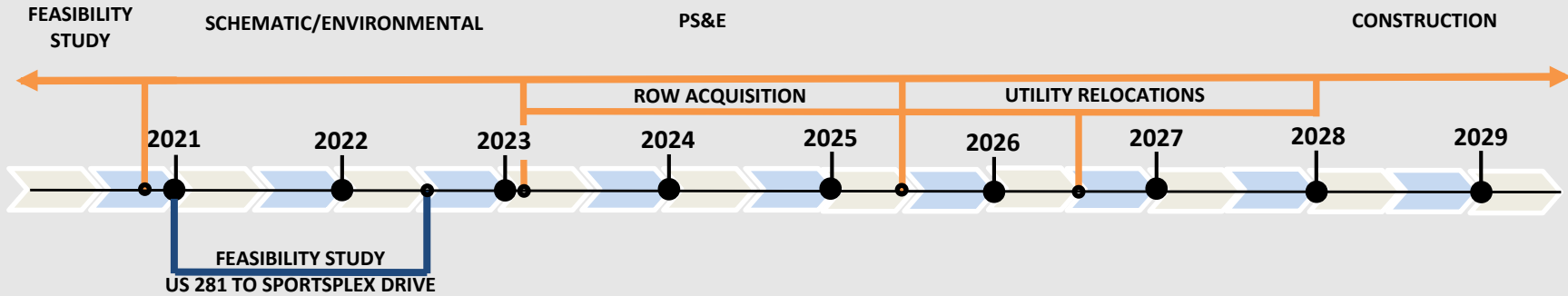
Upcoming TxDOT study for improvements to US 290 between Sportsplex Drive to US 281

The approved Oak Hill Parkway Project, anticipated to open to traffic as early as 2025

+ Ongoing TxDOT traffic study for interim safety projects



US 290 West Improvements Timeline



Notes:

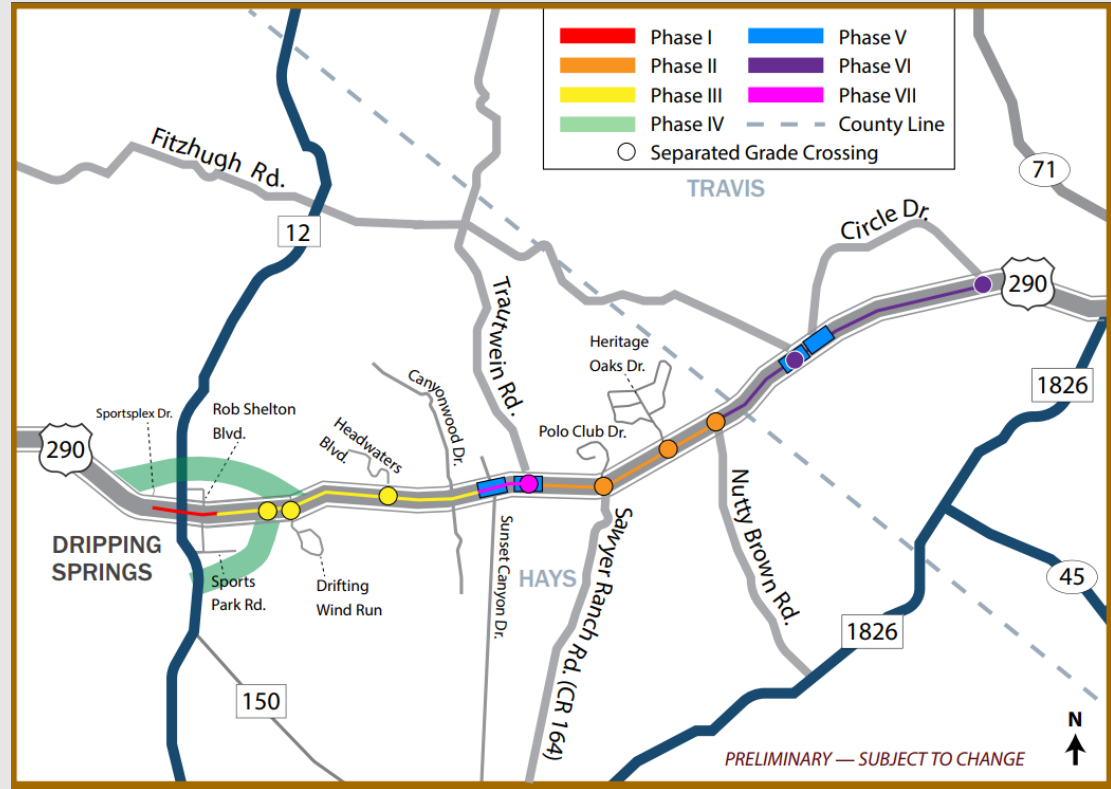
1. Construction start contingent on funding, ROW, and utility relocations
 2. Project could be phased due to funding constraints
- PS&E – Plans, Specifications, and Estimates (Final Design)
 ROW – Right of Way

+ Ongoing TxDOT traffic study for interim safety projects



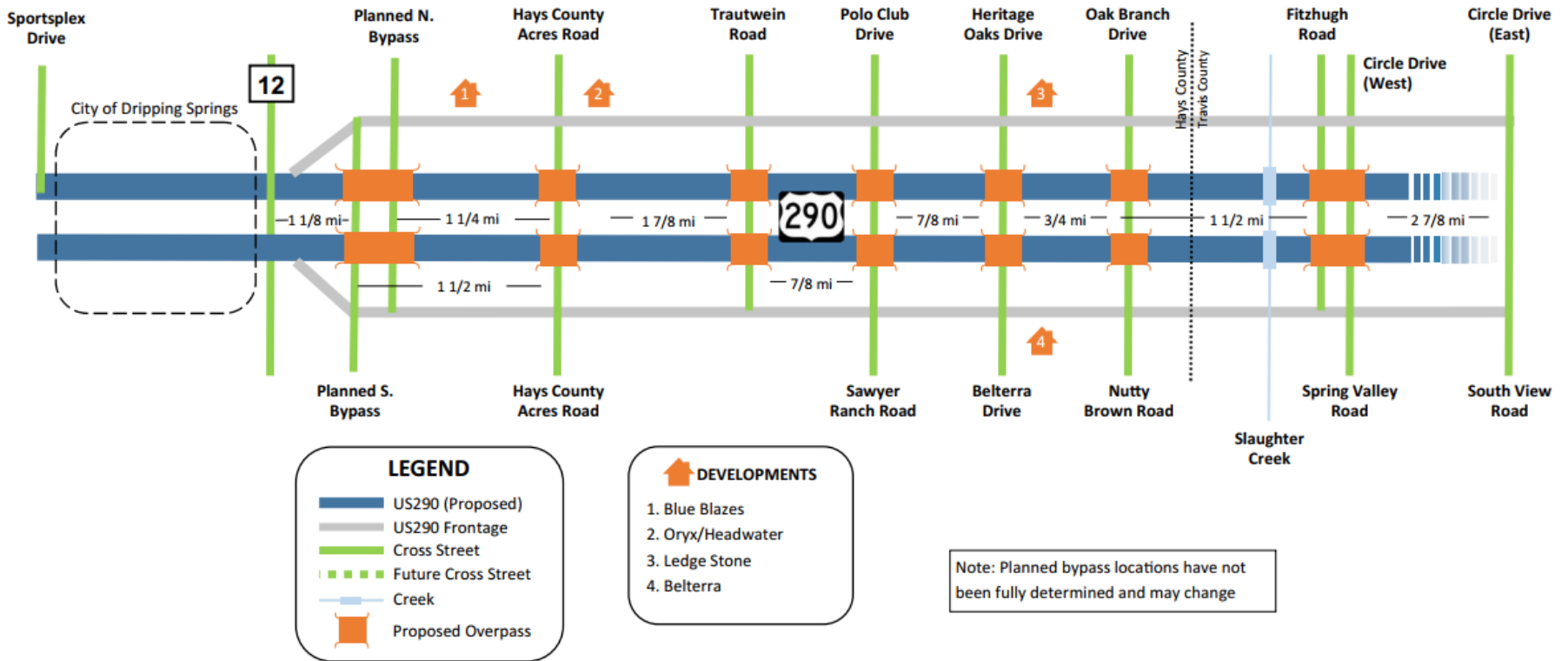
PROJECT FUNDING

- Funding for constructing the entire corridor to be pursued.
- If not all funding is attained at one time, the alternative is to phase the corridor construction.
 - Less impact to motorists
 - Faster improvements
 - Can target problem areas first





US 290 West Planning and Feasibility Study

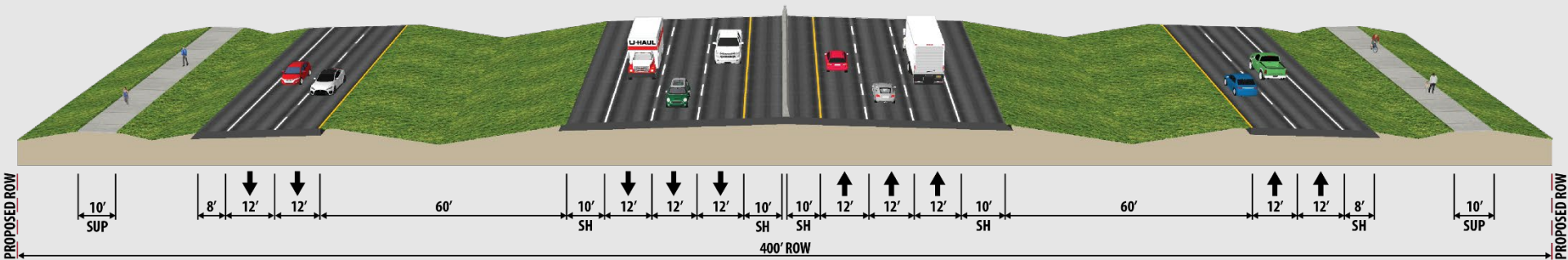




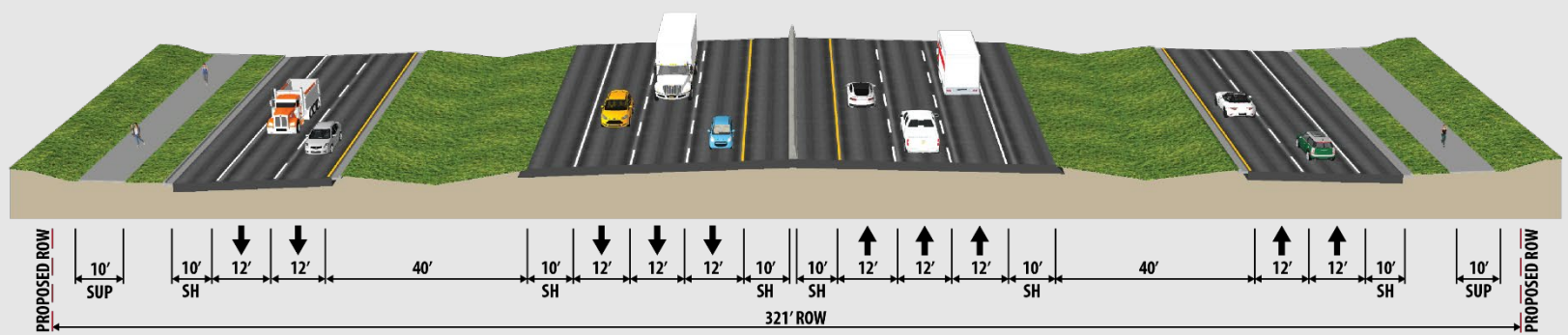
Proposed Typical Sections – Standard vs. Reduced



Standard (400 ft)



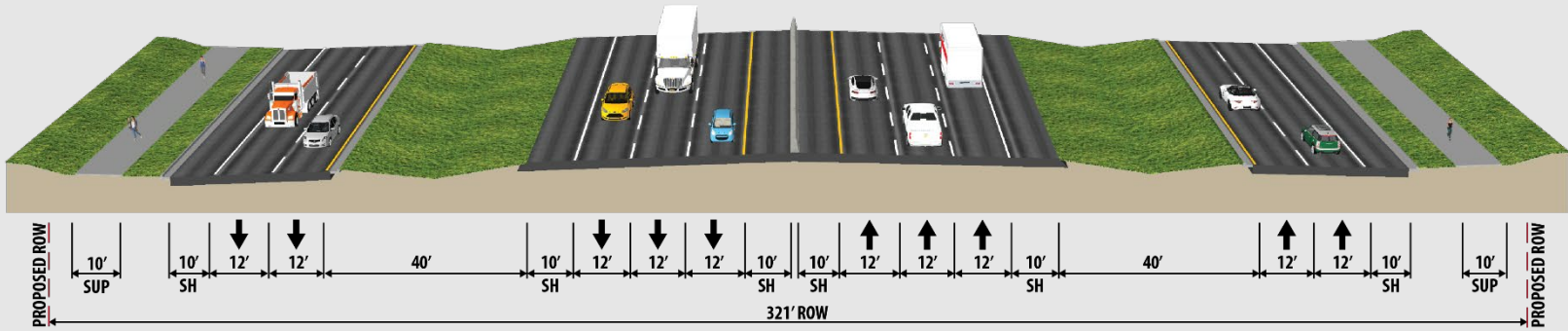
Reduced (321 ft)



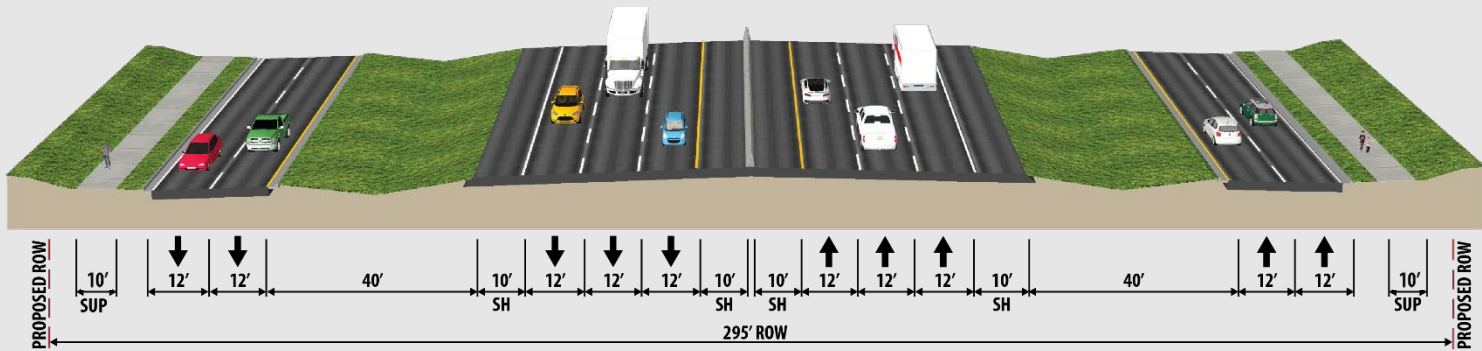
Proposed Typical Sections – Reduced vs. Minimized



Reduced (321 ft)



Minimized (295 ft)





| Reduction | Trade Offs |
|--|--|
| <p>Reduce border between frontage road and main lanes</p> | <ul style="list-style-type: none"> ▪ Ditch capacity needs may require adjustment from 6:1 desirable to 4:1 and, although 4:1 is acceptable, 6:1 or flatter is preferred for both errant vehicle performance and slope maintainability ▪ Closed drainage system may be required in ditch area depending on calculated discharge. ▪ Can constrain ramp design and feasibility both horizontally and vertically. |
| <p>Removal of frontage road 10' shoulder</p> | <ul style="list-style-type: none"> ▪ 10' Shoulder with 8' buffer between curb and Shared Use Path (SUP) provides clear zone for separation of bicycle/pedestrians on SUP and traffic ▪ Removal of shoulders prevents utilization of the shoulder for turning movements |
| <p>Reduction to SUP buffer width</p> | <ul style="list-style-type: none"> ▪ Reducing the buffer between the SUP and back of curb to 3' to maintain a full width SUP would require a design waiver approval |
| <p>Reduced utility corridor</p> | <ul style="list-style-type: none"> ▪ Less space for placing proposed utilities and retaining walls that may be required |

US 290 Ongoing Development Area Locations



Source: Google Earth, 2018



SITE PLAN



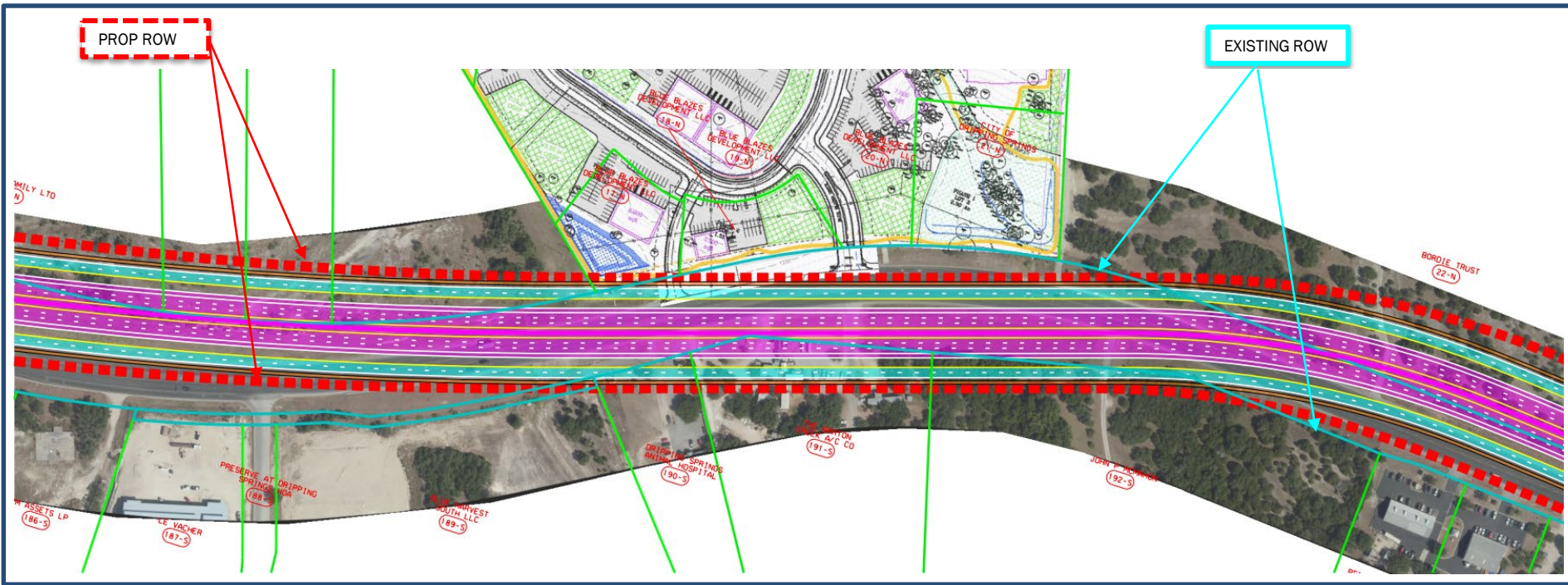
Source: <http://blueblazesdevelopment.com/>, June 2020

GOOGLE EARTH

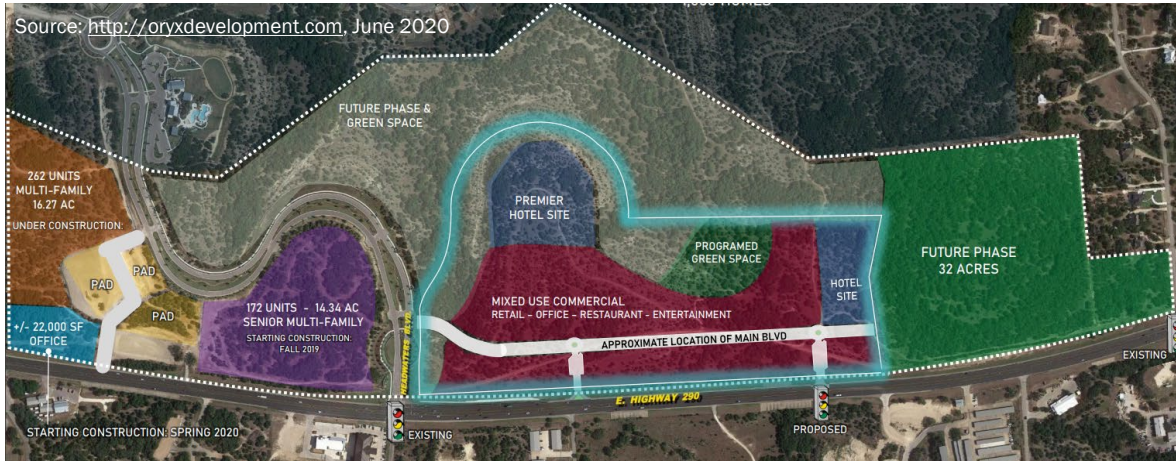


Source: Google Earth, 08/23/2018

Blue Blazes Development Proposed ROW



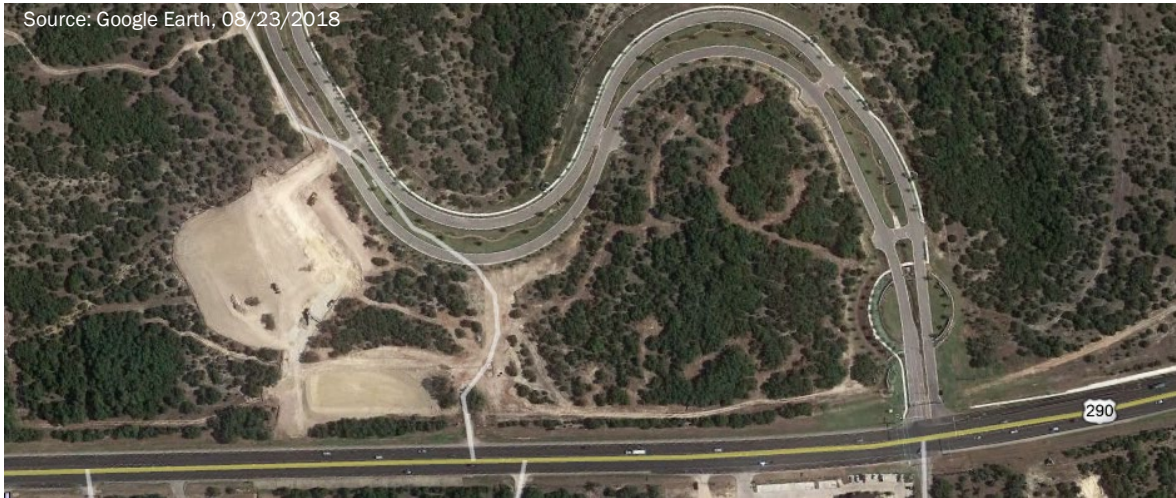
Location #2 Headwaters Development



SITE PLAN

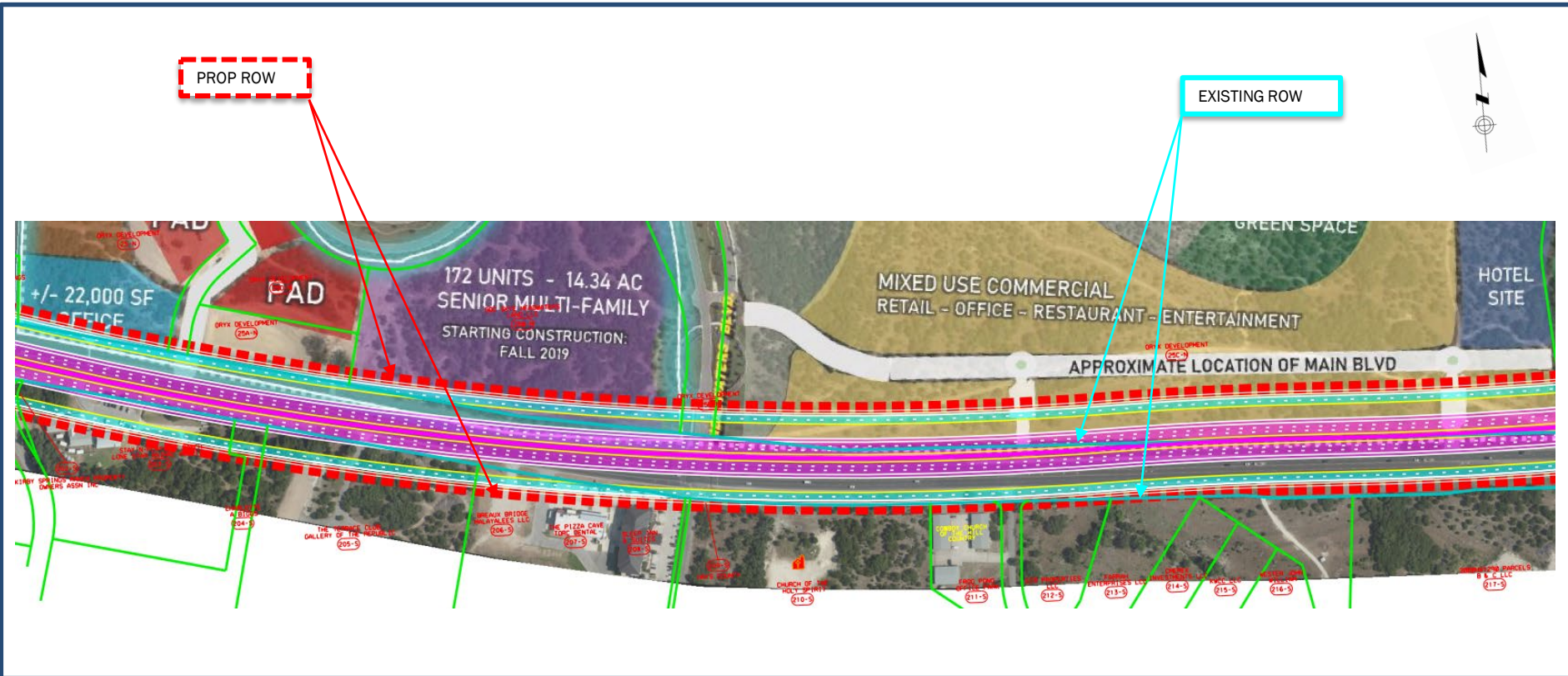
Proposed signal shown is part of and is subject to

Source: Google Earth, 08/23/2018



GOOGLE

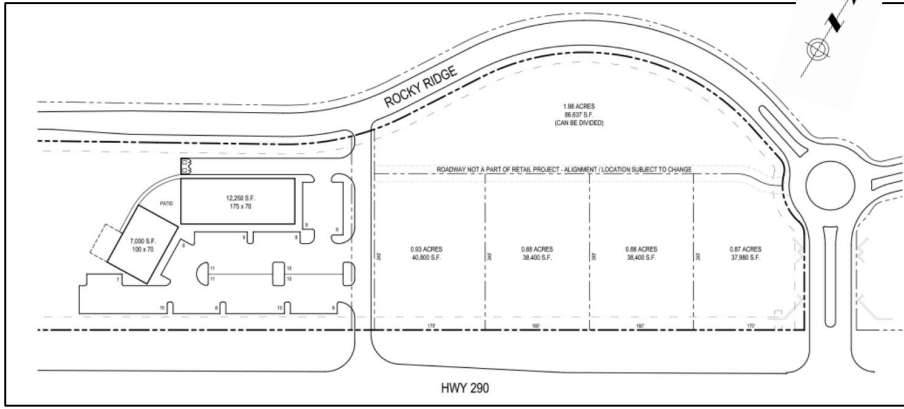
Headwaters Development Alternative ROW Comparison



Location #3 Ledge Stone Development



SITE PLANS

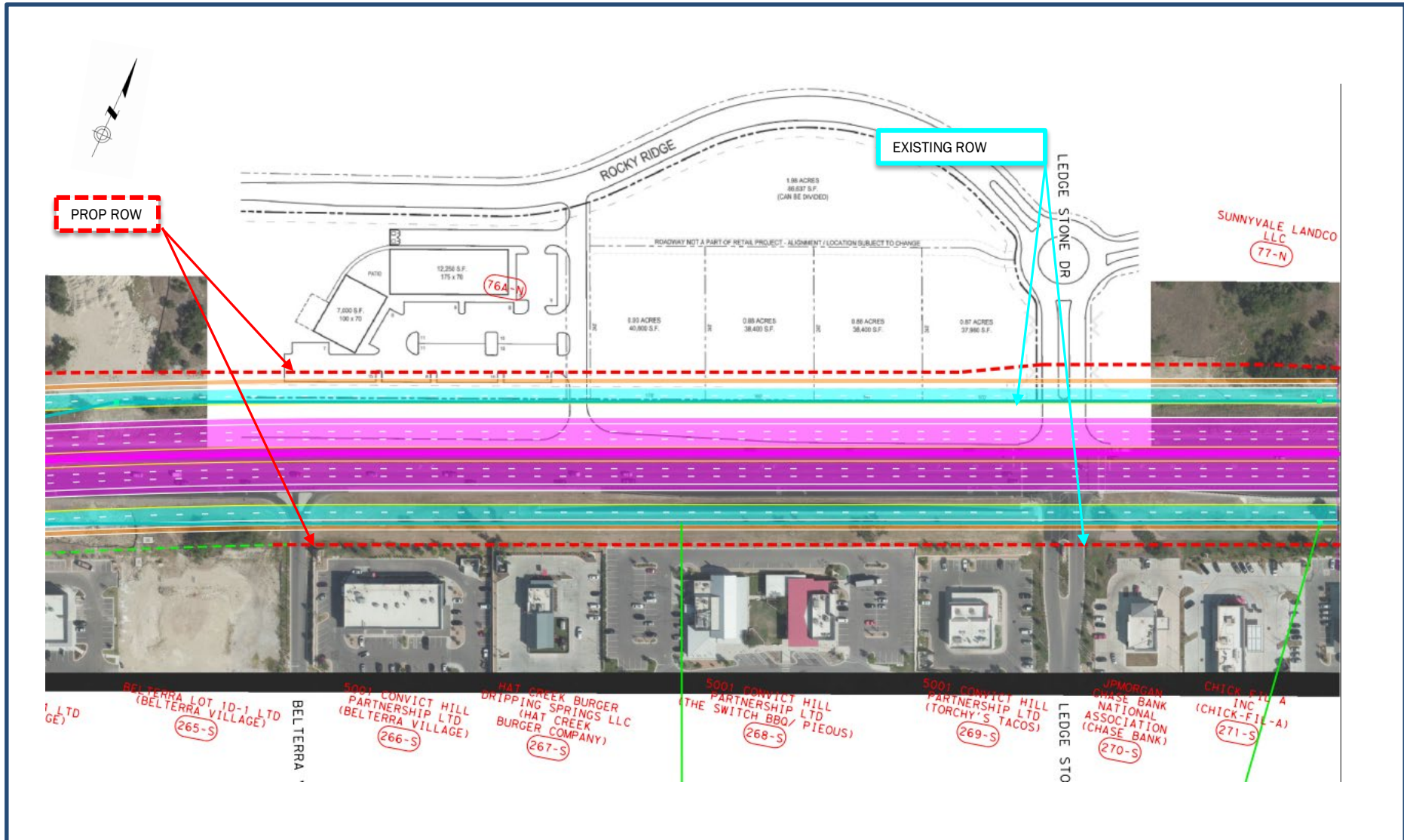


Source: <https://theretailconnection.net/properties/ledge-stone-dripping-springs-tx/>



GOOGLE EARTH

Ledge Stone Development Proposed Reduced ROW

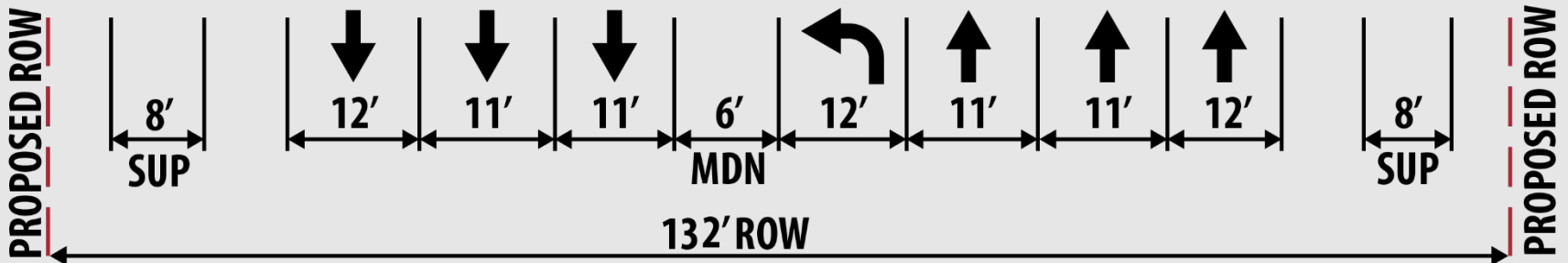
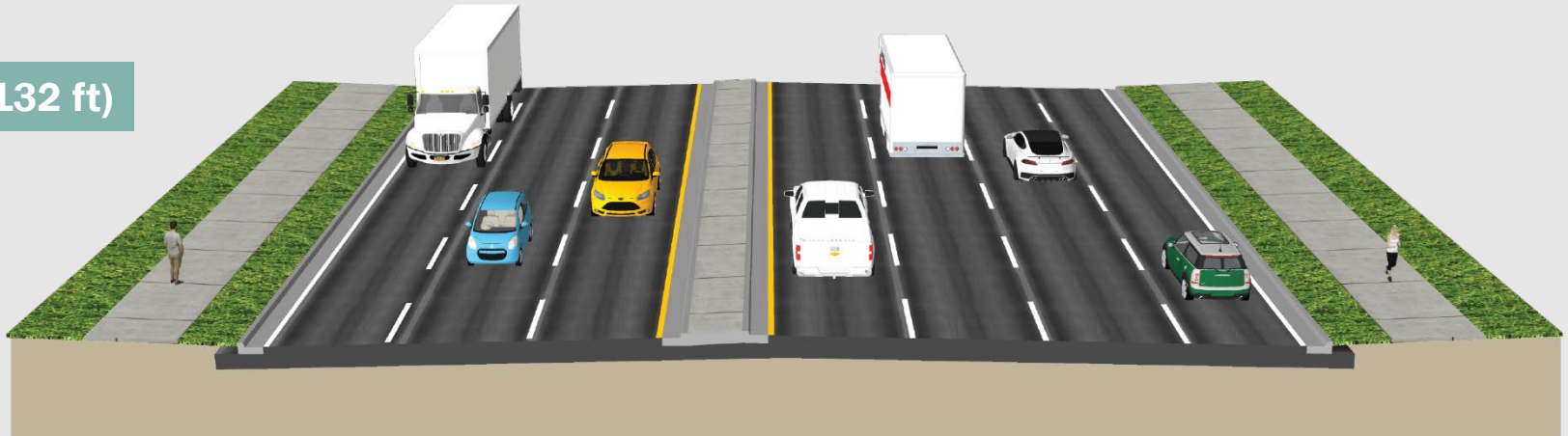


City of Dripping Springs



The current plan includes an urban section within the city limits of Dripping Springs.

Urban (132 ft)



US 290 Proposed Roadway KMZ Overview



Questions?