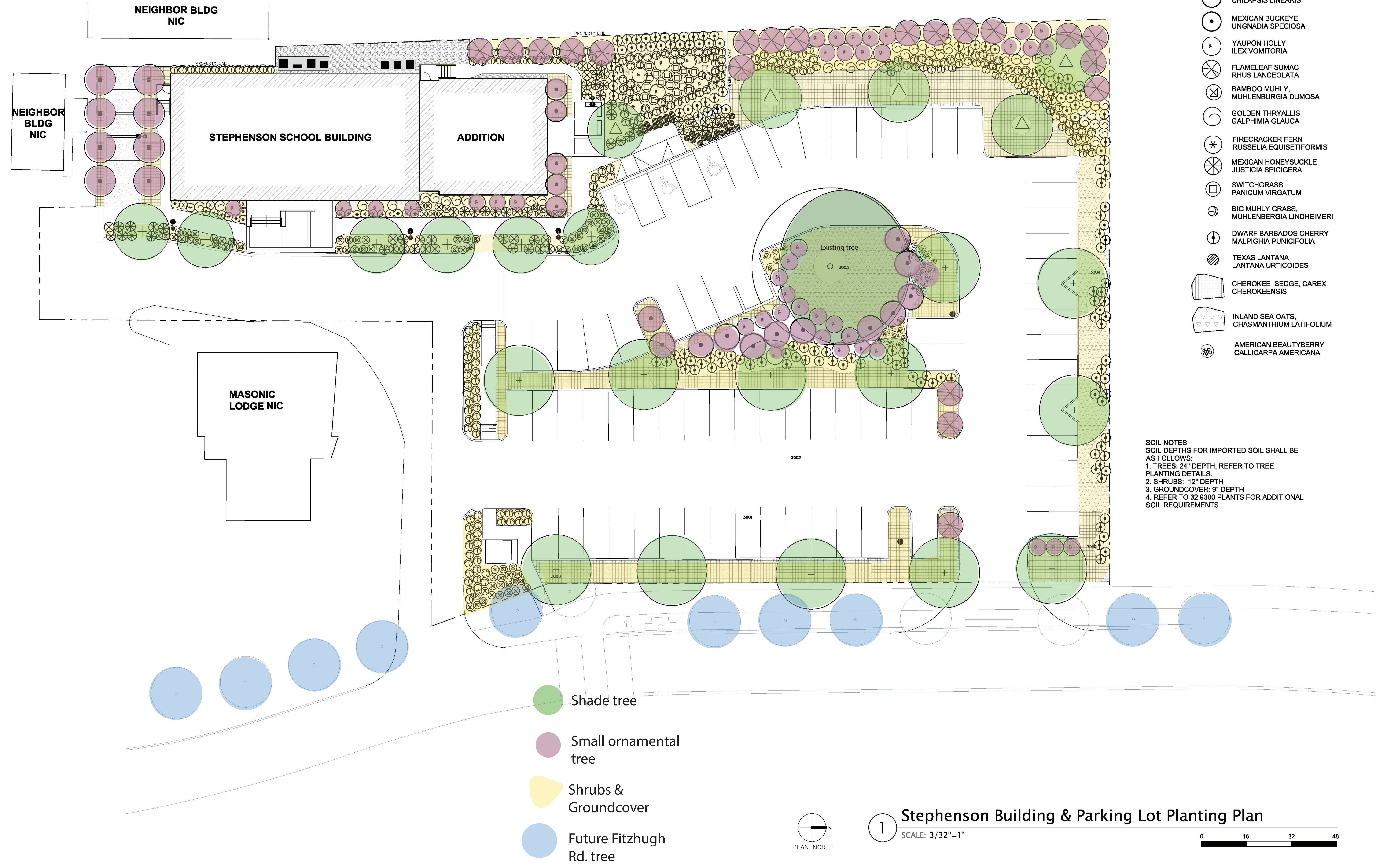


**PLANTING LEGEND**

- CHINQUAPIN OAK, QUERCUS MUHLENBERGII
- CEDAR ELM, ULMUS CRASSIFOLIA
- DESERT WILLOW, CHILAPIS LINEARIS
- MEXICAN BUCKEYE, UNGNADIA SPECIOSA
- YAUPON HOLLY, ILEX VOMITORIA
- FLAMELEAF SUMAC, RHUS LANCEOLATA
- BAMBOO MUHLY, MUHLENBURGIA DUMOSA
- GOLDEN THRYALLIS, GALPHIMIA GLAUCA
- FIRECRACKER FERN, RUSSELLIA EQUISETIFORMIS
- MEXICAN HONEYSUCKLE, JUSTICIA SPICIGERA
- SWITCHGRASS, PANICUM VIRGATUM
- BIG MUHLY GRASS, MUHLENBURGIA LINDHEIMERI
- DWARF BARBADOS CHERRY, MALPIGHIA PUNICIFOLIA
- TEXAS LANTANA, LANTANA URTICOIDES
- CHEROKEE SEDGE, CAREX CHEROKEENSIS
- INLAND SEA OATS, CHASMANTHIUM LATIFOLIUM
- AMERICAN BEAUTYBERRY, CALLICARPA AMERICANA

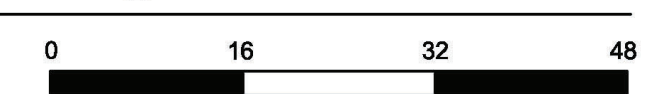
SOIL NOTES:  
SOIL DEPTHS FOR IMPORTED SOIL SHALL BE AS FOLLOWS:  
1. TREES: 24" DEPTH, REFER TO TREE PLANTING DETAILS.  
2. SHRUBS: 12" DEPTH  
3. GROUNDCOVER: 9" DEPTH  
4. REFER TO 32 9300 PLANTS FOR ADDITIONAL SOIL REQUIREMENTS



- Shade tree
- Small ornamental tree
- Shrubs & Groundcover
- Future Fitzhugh Rd. tree



**1 Stephenson Building & Parking Lot Planting Plan**  
SCALE: 3/32"=1'



City of Dripping Springs  
STEPHENSON SCHOOL  
BUILDING,  
PARKING LOT

311 Old Fitzhugh  
Dripping Springs, TX  
78620

COPYRIGHT

Co'design, LLC. Reproduction or use for any purpose other than that authorized by Co'design, LLC is forbidden.

REVISION HISTORY

Project No. XXXX	Date XXXX XX, 2024
Sheet Name Planting Plan	
Sheet Number L1.02	