

STEPHENSON HIGH SCHOOL

Dripping Springs, Texas



City of Dripping Springs
Historic Preservation Commission

100% Construction Documents
Confirmation

June 6, 2024

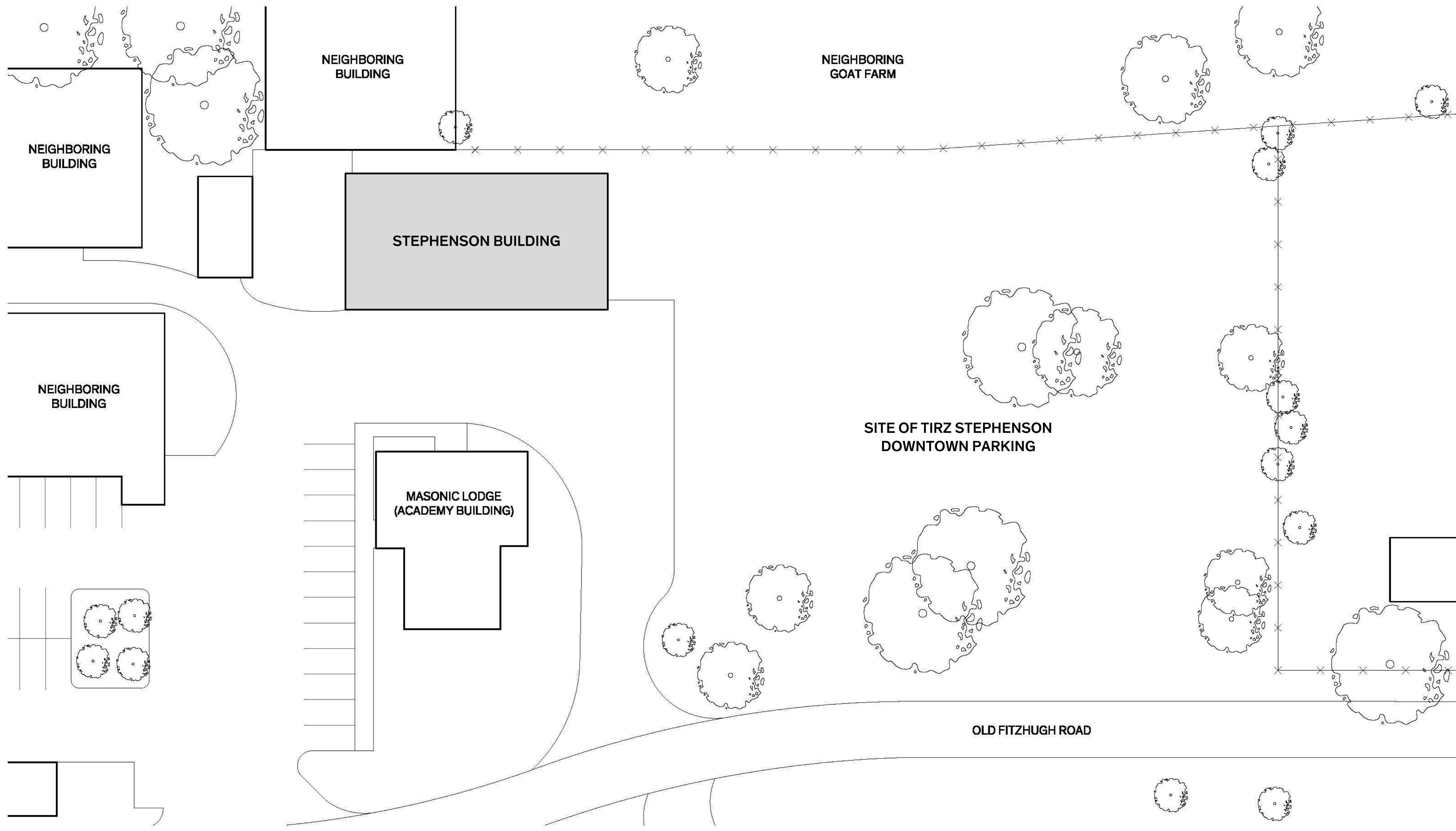
*Adaptive Re-Use and Rehabilitation of the
Historic Stephenson High School Building
and Proposed Addition*

UPDATE SUMMARY

- Construction Documents 100% Complete
- Issued for Pricing (un-stamped drawings & specs)
- Associated 100% Estimate of Probable Construction Costs
- Design Consistent with previously approved COA and Design Development
- Project meets or exceeds all City Programming & Goal Objectives
- Seeking City Council Confirmation & Approval of Permitting & Bid Phases*



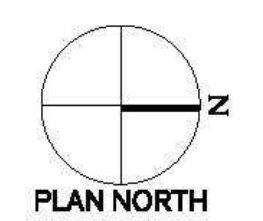
*Contingent upon Construction Funding

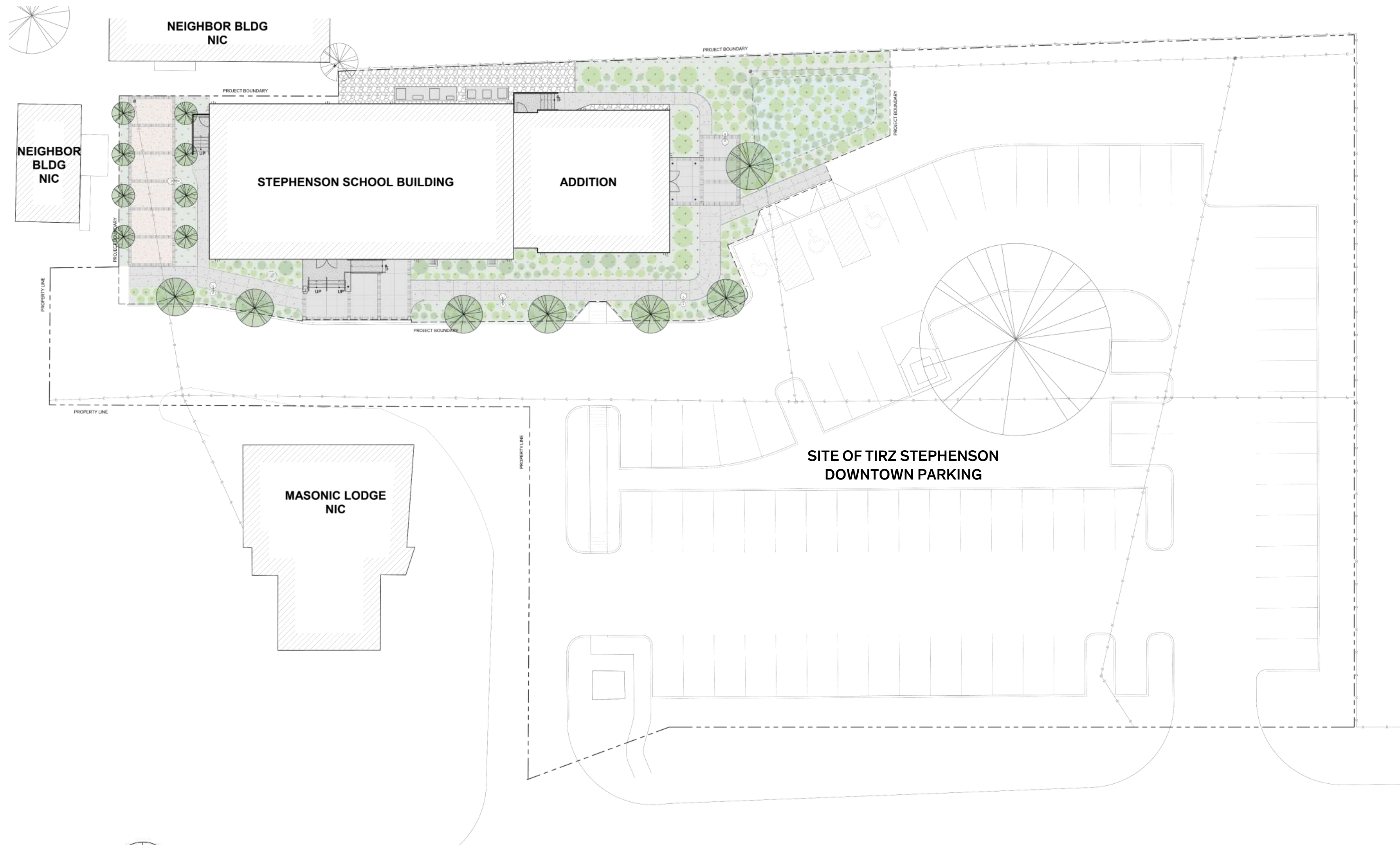


Existing Site Plan

Scale: 1/32" = 1'-0"

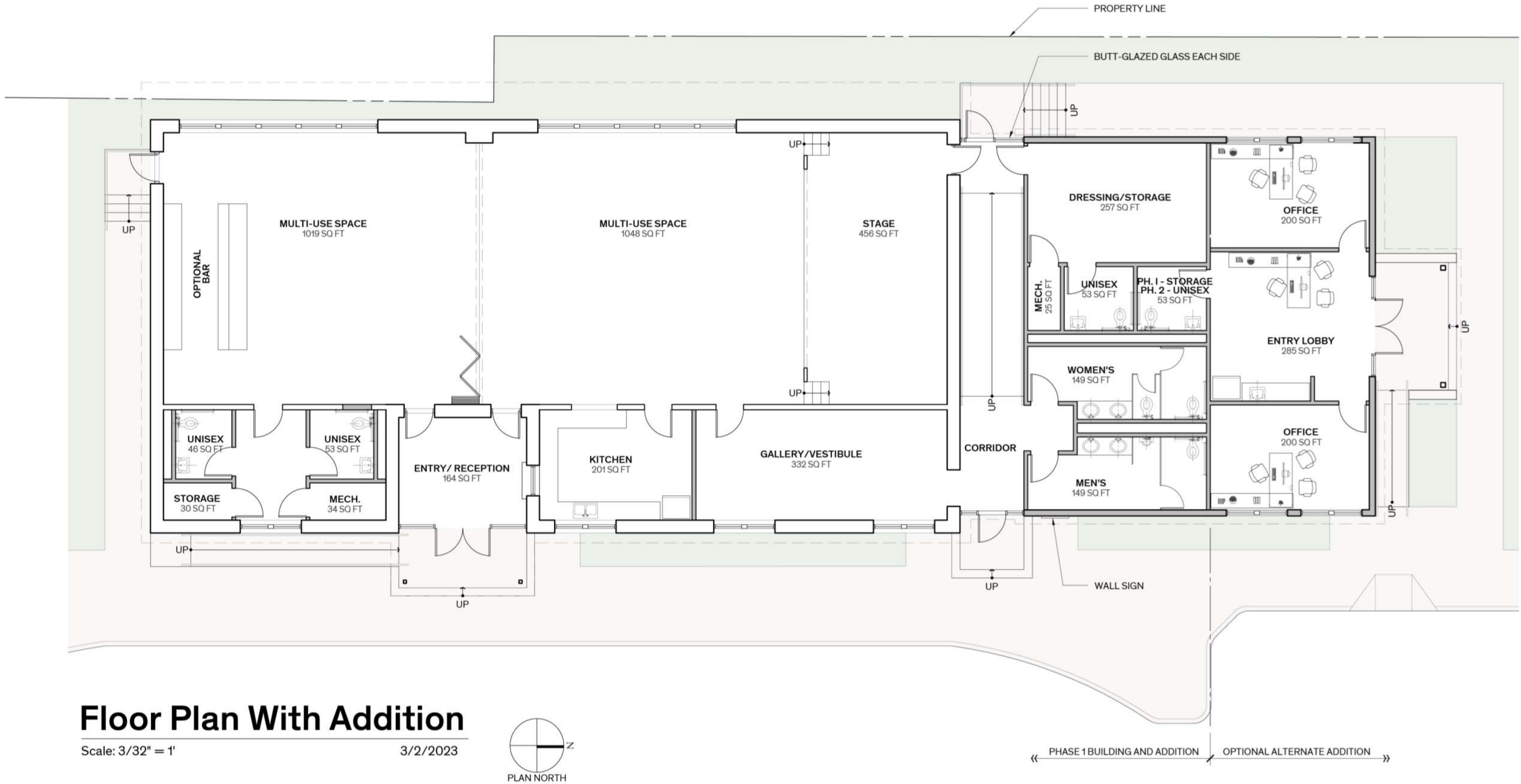
04/01/2020





Site Plan



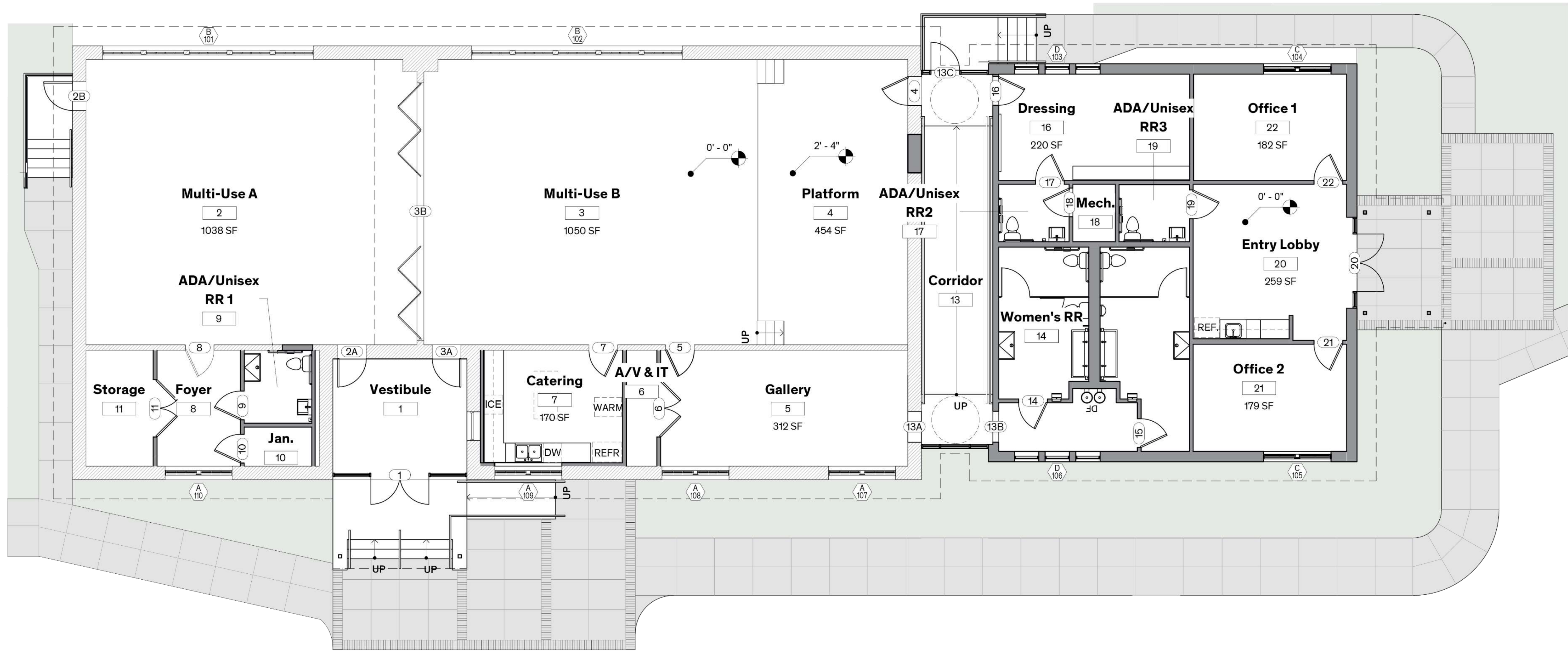


Floor Plan With Addition

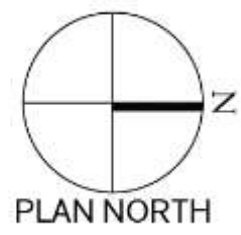
Scale: 3/32" = 1'

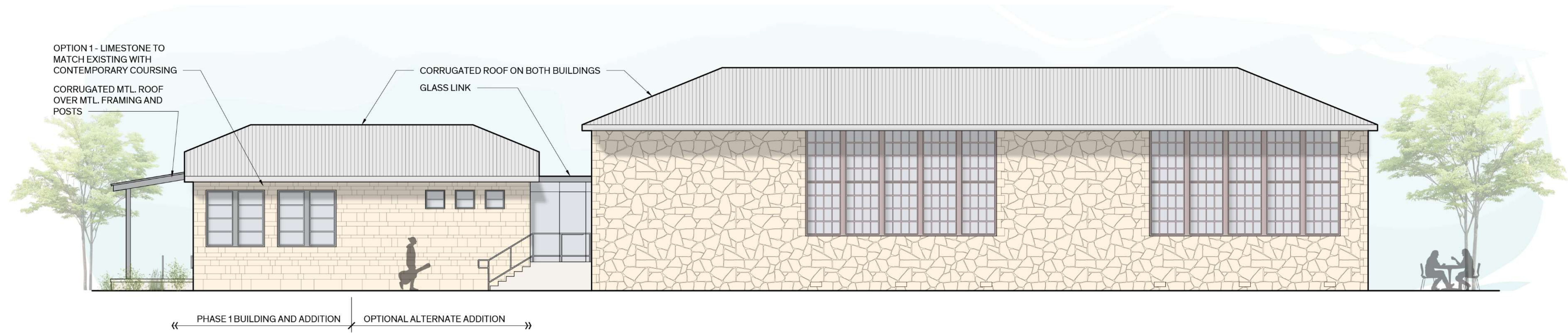
3/2/2023





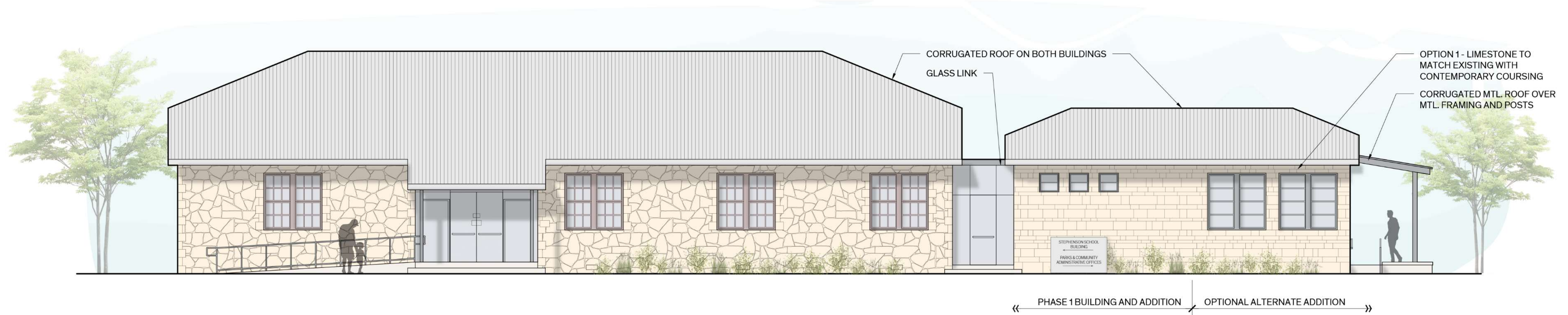
Floor Plan





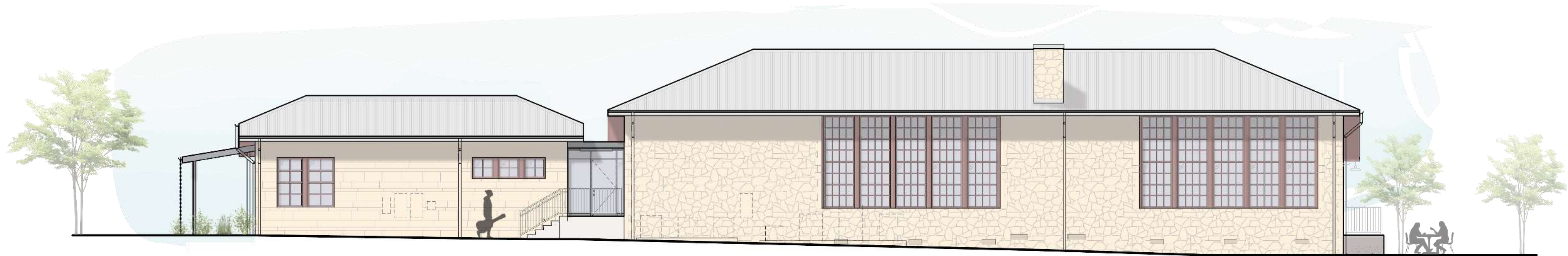
Option 1 - West Elevation

Scale: 3/32" = 1' 3/15/2023



Option 1 - East Elevation

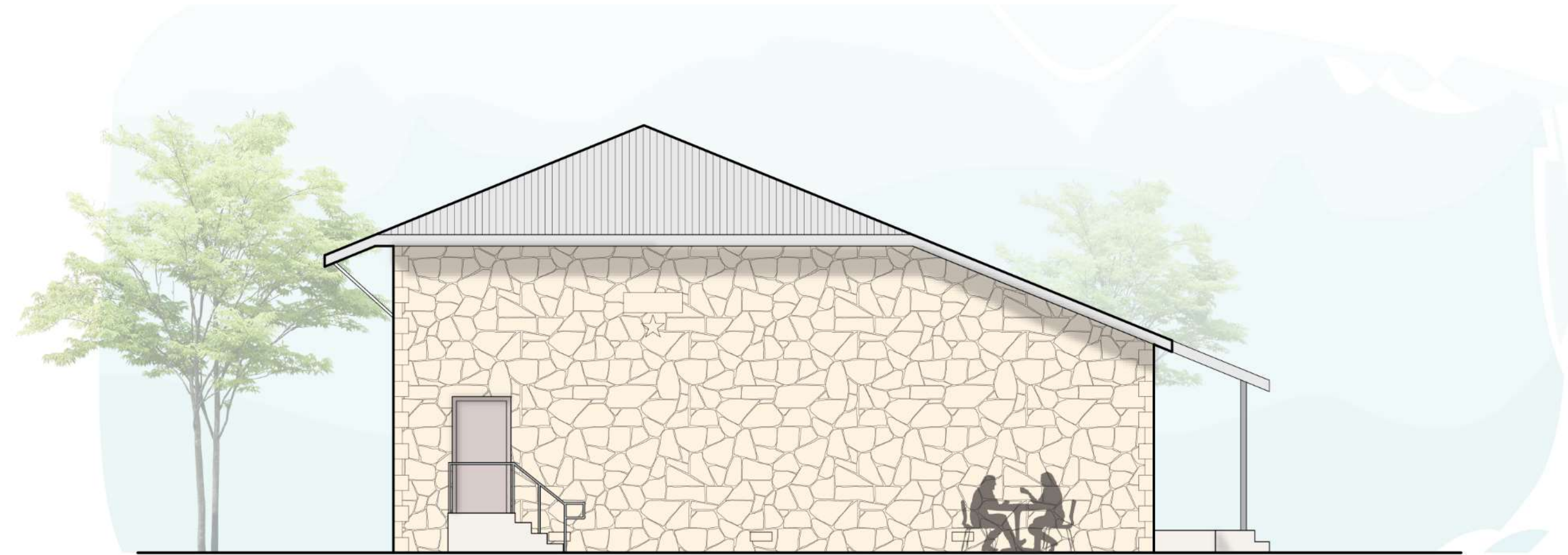
Scale: 3/32" = 1' 3/15/2023



West Elevation



East Elevation



Option 1 - South Elevation

Scale: 3/32" = 1'

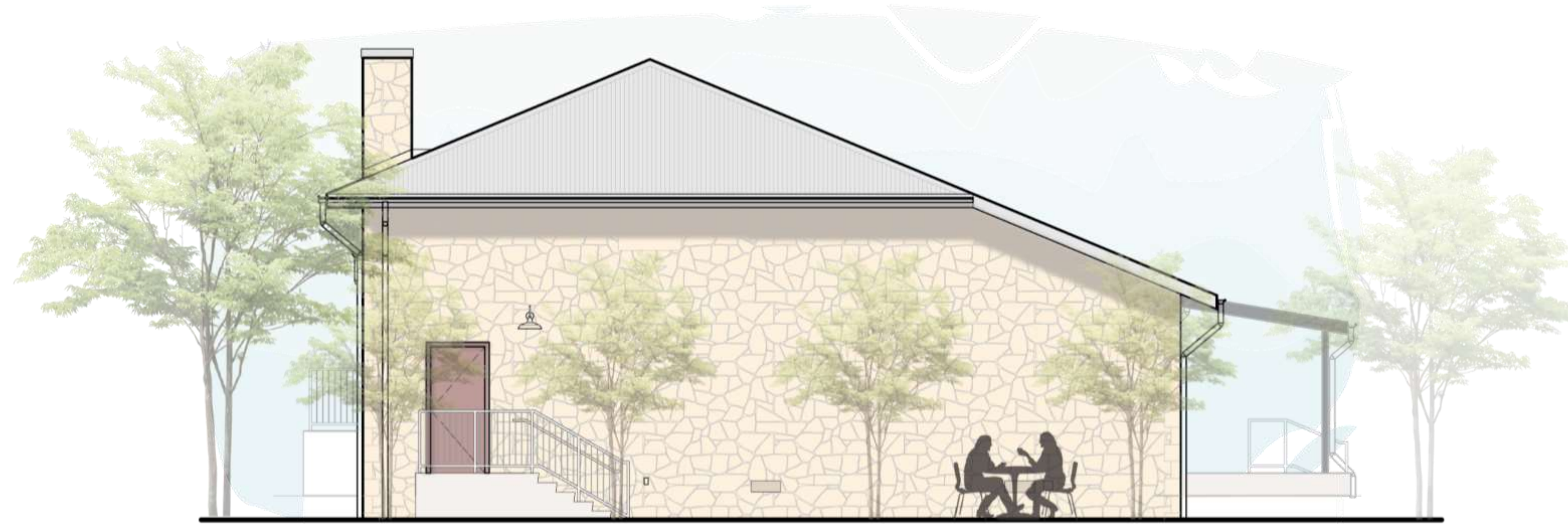
3/15/2023



Option 1 - North Elevation

Scale: 3/32" = 1'

3/15/2023



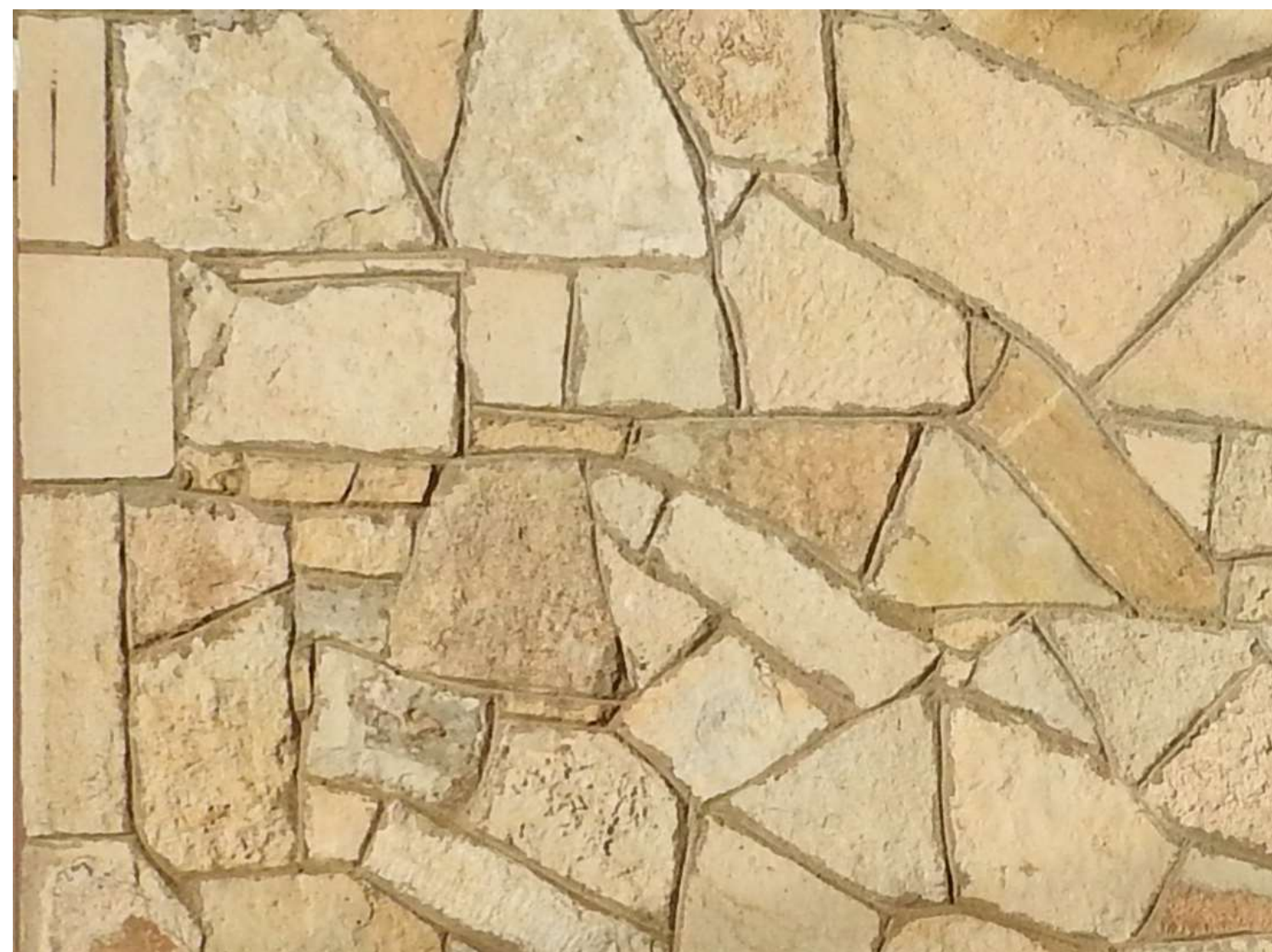
South Elevation



North Elevation

MATERIALS

Existing Limestone



Matching Cordova cream limestone in ashlar pattern



Galvanized Corrugated Metal





**Questions?
Thank You!!!**