

FILE PATH: W:\Driftwood\Driftwood Conservation District\CAD\EXHIBIT4 - Conservation District - EXTENTS.dwg

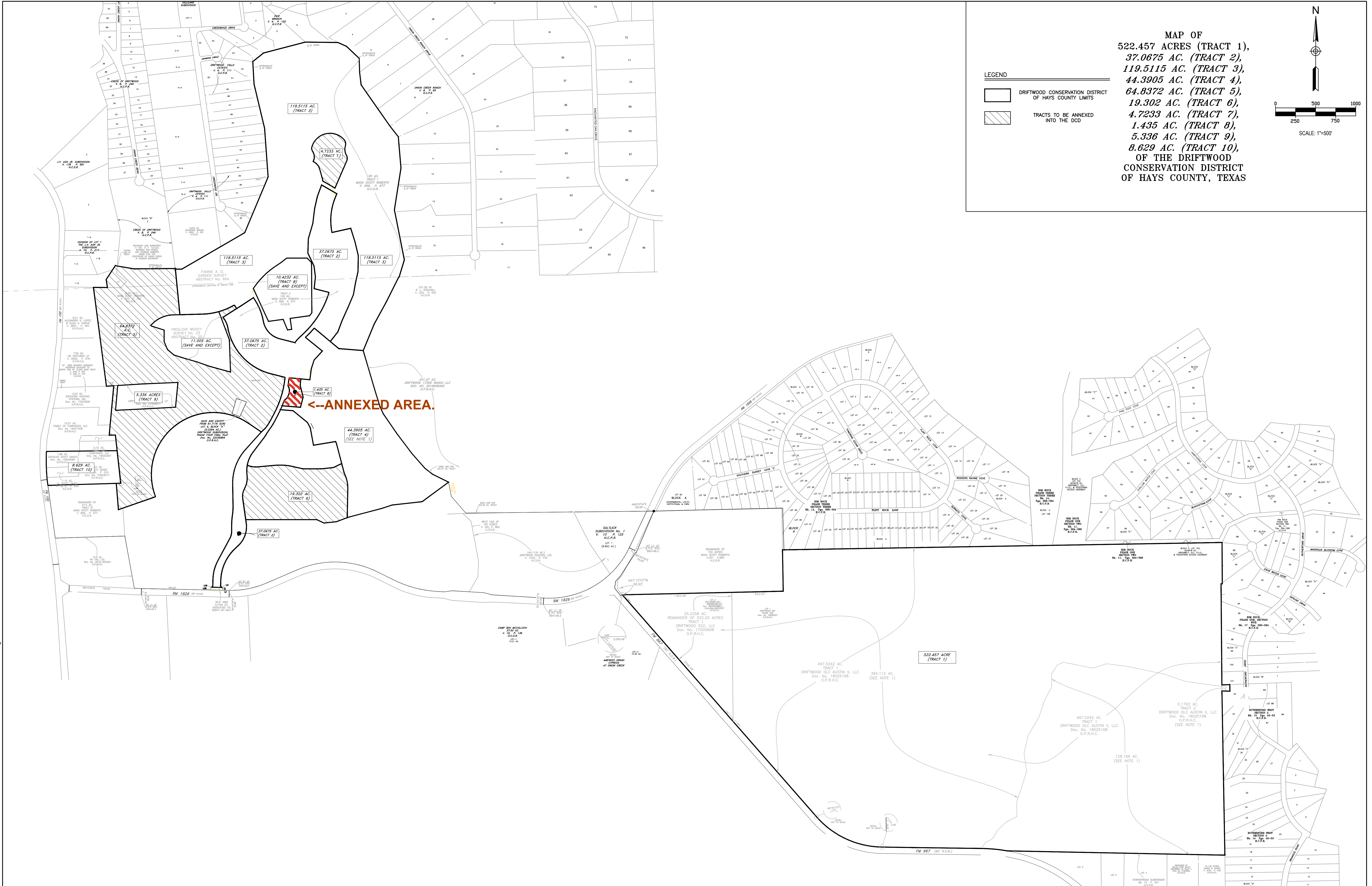


Murfee Engineering Company
Texas Registered Engineering Firm F-353
1101 Capital of Texas Highway South, Building D, Suite 110, Austin, Texas 78746, (512) 327-9204

DRIFTWOOD CONSERVATION DISTRICT
DISTRICT EXTENTS

PRELIMINARY DRAWING
FOR PLANNING PURPOSES ONLY

FILE: W:\Driftwood\Driftwood Conservation District\CAD\EXHIBIT4 - Conservation District - EXTENTS.dwg
DATE: 2/6/2025 JOB NO. 18002.91 TAB: D500 dcd
DESIGNED BY: JKB DRAWN BY: RLW CHECKED BY: JKB
FILE: W:\Driftwood\Driftwood Conservation District\CAD\EXHIBIT4 - Conservation District - EXTENTS.dwg



LEGEND

- DRIFTWOOD CONSERVATION DISTRICT OF HAYS COUNTY LIMITS
- TRACTS TO BE ANNEXED INTO THE DCD

MAP OF
 522.457 ACRES (TRACT 1),
 37.0675 AC. (TRACT 2),
 119.5115 AC. (TRACT 3),
 44.3905 AC. (TRACT 4),
 64.8372 AC. (TRACT 5),
 19.302 AC. (TRACT 6),
 4.7233 AC. (TRACT 7),
 1.435 AC. (TRACT 8),
 5.336 AC. (TRACT 9),
 8.629 AC. (TRACT 10),
 OF THE DRIFTWOOD
 CONSERVATION DISTRICT
 OF HAYS COUNTY, TEXAS

North arrow pointing up.

Scale: 1"=500'

Scale bar showing 0, 250, 500, 750, 1000 feet.