



Cynosure
Hays County, Texas

D&A Job No. 1691-004
August 18, 2020

METES & BOUNDS DESCRIPTION

BEING A 283.42 ACRE TRACT OF LAND OUT OF THE I.V. DAVIS, JR. PREEMPTION SURVEY, ABSTRACT NUMBER 673, AND THE EDWARD W. BROWN SURVEY NUMBER 136, ABSTRACT NUMBER 44, HAYS COUNTY, TEXAS, AND BEING A PORTION OF A CALLED 291-1/3 ACRE TRACT, DESCRIBED TO CYNOSURE CORPORATION, AS RECORDED IN VOLUME 258, PAGE 123 OF THE DEED RECORDS OF HAYS COUNTY, TEXAS [D.R.H.C.T.], SAID 291-1/3 ACRE TRACT BEING OUT OF A CALLED 599 ACRE TRACT DESCRIBED IN VOLUME 106, PAGE 31 [D.R.H.C.T.]; SAID 283.42 ACRE TRACT OF LAND BEING MORE PARTICULARLY DESCRIBED BY METES AND BOUNDS AS FOLLOWS:

BEGINNING AT A 5/8-INCH IRON PIPE IN THE REMAINS OF A ROCK MOUND, FOUND FOR THE NORTHEAST CORNER OF THE PHILIP A. SMITH SURVEY, NUMBER 26, ABSTRACT NUMBER 415, AND A CALLED 206.2 ACRE TRACT, DESCRIBED IN VOLUME 2639, PAGE 403 OF THE OFFICIAL PUBLIC RECORDS OF HAYS COUNTY, TEXAS [O.P.R.H.C.T.], SAME BEING AN INTERNAL CORNER OF SAID ABSTRACT NUMBER 44, SAME BEING THE SOUTH CORNER OF A CALLED 29.78 ACRE TRACT DESCRIBED IN VOLUME 2486, PAGE 541 [O.P.R.H.C.T.], AND SAME BEING THE NORTHWEST CORNER OF SAID 291-1/3 ACRE TRACT;

THENCE N60°08'25"E, WITH THE SOUTHEAST LINE OF SAID 29.78 ACRE TRACT, A DISTANCE OF 1,550.74 FEET TO A 1/2-INCH IRON ROD FOUND AT THE EAST CORNER OF SAID 29.78 ACRE TRACT, SAME BEING ON THE SOUTHWEST LINE OF THE REMAINDER OF A CALLED 1,364.31 ACRE TRACT RECORDED IN DOCUMENT NUMBER 04015659 [O.P.R.H.C.T.], AND BEING THE NORTH CORNER OF THE HEREIN DESCRIBED TRACT;

THENCE S30°08'26"E, WITH THE SOUTHWEST LINE OF SAID REMAINDER TRACT AND THE SOUTHWEST LINE OF A CALLED 1,034.73 ACRE TRACT, DESCRIBED IN VOLUME 4832, PAGE 118 [O.P.R.H.C.T.], PASSING AT A DISTANCE OF 1,756.96 FEET A 1/2-INCH IRON ROD WITH A "DELTA" CAP FOUND AT THE SOUTH CORNER OF SAID REMAINDER TRACT, SAME BEING THE WEST CORNER OF SAID 1,034.73 ACRE TRACT, AND CONTINUING IN TOTAL 2,168.63 FEET TO A STONE MOUND WITH 60D NAIL FOUND FOR THE COMMON CORNERS OF SAID ABSTRACT NUMBER 44, THE W.R. WOOD SURVEY, ABSTRACT NUMBER 567, AND THE J.F. GILBERT SURVEY, ABSTRACT NUMBER 811, ALL IN HAYS COUNTY, TEXAS;

THENCE CONTINUING S30°08'26"E, WITH THE SOUTHEAST LINE OF SAID 599 ACRE TRACT, THE SOUTHWEST LINE OF SAID 1,034.73 ACRE TRACT, SAME BEING THE SOUTHWEST LINE OF SAID ABSTRACT NUMBER 811 AND THE SOUTHWEST LINE OF THE LEVI LEWIS SURVEY NUMBER 154, ABSTRACT NUMBER 639, HAYS COUNTY, TEXAS, PASSING AT A DISTANCE OF 1,854.96 FEET A 1/2-INCH IRON ROD WITH A "DELTA" CAP FOUND FOR REFERENCE, PASSING AT A DISTANCE OF



1,925.27 FEET A 1/2-INCH IRON ROD WITH A "DELTA" CAP FOUND FOR REFERENCE, AND CONTINUING IN TOTAL 3,113.19 FEET TO A 1/2-INCH IRON ROD WITH "DOUCET" CAP SET AT THE EAST CORNER OF SAID 291-1/3 ACRE TRACT, SAME BEING THE NORTHEAST CORNER OF A CALLED 135.92 ACRE TRACT, RECORDED IN VOLUME 3553, PAGE 378 [O.P.R.H.C.T.] AND BEING DESCRIBED AS "SHARE NUMBER ONE" IN VOLUME 198, PAGE 151 IN THE DEED RECORDS OF HAYS COUNTY, TEXAS [D.R.H.C.T.], FOR THE EAST CORNER OF THE HEREIN DESCRIBED TRACT, FROM WHICH A STONE MOUND WITH A 60D NAIL FOUND ON THE NORTH LINE OF THE WILLIAM WALKER SURVEY NUMBER 130, ABSTRACT NUMBER 475, HAYS COUNTY, TEXAS, SAME BEING AT THE SOUTHEAST CORNER OF SAID ABSTRACT NUMBER 44, AND ALSO BEING AT THE SOUTHWEST CORNER OF SAID ABSTRACT NUMBER 639, BEARS S30°08'26"E, A DISTANCE OF 1,380.12 FEET;

THENCE S89°15'51"W, WITH A SOUTH LINE OF SAID 291-1/3 ACRE TRACT, SAME BEING THE NORTH LINE OF SAID 135.92 ACRE TRACT AND THE NORTH LINE OF A CALLED 277.23 ACRE TRACT, SHARE NUMBER TWO, DESCRIBED IN SAID VOLUME 198, PAGE 151 [D.R.H.C.T.], PASSING AT A DISTANCE OF 1,670.47 FEET A 1/2-INCH IRON PIPE FOUND FOR REFERENCE, AND CONTINUING IN TOTAL 3,043.33 FEET TO A 60D NAIL FOUND IN A 1/2-INCH IRON PIPE FOUND FOR AN INTERIOR ELL CORNER OF SAID 291-1/3 ACRE TRACT, SAME BEING THE NORTHWEST CORNER OF SAID 277.23 ACRE TRACT, FOR AN INTERIOR ELL CORNER OF THE HEREIN DESCRIBED TRACT;

THENCE WITH AN EAST LINE OF SAID 599 ACRE TRACT, AND THE EAST LINE OF SAID 291-1/3 ACRE TRACT, AND AN OLD WIRE FENCE FOUND FOR THE WEST LINE OF A CALLED 100 ACRE TRACT DESCRIBED IN VOLUME 46, PAGE 53 [D.R.H.C.T.], SAME BEING A WEST LINE OF SAID SHARE NUMBER TWO, THE FOLLOWING SIX (6) COURSES AND DISTANCES:

1. S11°59'53"E, A DISTANCE OF 327.25 FEET TO A 1/2-INCH IRON PIPE FOUND FOR AN ANGLE POINT;
2. S14°46'26"E, A DISTANCE OF 324.06 FEET TO A FENCE POST FOUND FOR AN ANGLE POINT;
3. S20°28'59"E, A DISTANCE OF 204.36 FEET TO A FENCE POST FOUND FOR AN ANGLE POINT;
4. S09°17'53"W, A DISTANCE OF 327.10 FEET TO A FENCE POST FOUND FOR AN ANGLE POINT;
5. S21°13'11"W, A DISTANCE OF 64.75 FEET TO FENCE POST FOUND FOR AN ANGLE POINT;
6. S50°38'14"W, A DISTANCE OF 53.17 FEET TO A 1/2-INCH IRON PIPE FOUND FOR THE MOST SOUTHERLY SOUTHEAST CORNER OF SAID 291-1/3 ACRE TRACT, SAME BEING AN INTERIOR ELL CORNER OF SAID SHARE NUMBER TWO, ALSO BEING ON THE SOUTH LINE OF SAID ABSTRACT NUMBER 673, SAME BEING THE NORTH LINE OF THE C.H. MALOTT SURVEY, ABSTRACT NUMBER 693, HAYS COUNTY, TEXAS, FOR THE MOST SOUTHERLY SOUTHEAST CORNER OF THE HEREIN DESCRIBED TRACT;



THENCE S89°00'33"W, WITH THE MOST SOUTHERLY LINE OF SAID 291-1/3 ACRE TRACT, SAME BEING A NORTHERLY LINE OF SAID SHARE NUMBER TWO, ALSO BEING THE SOUTH LINE OF SAID ABSTRACT NUMBER 673, SAME BEING THE NORTH LINE OF SAID ABSTRACT NUMBER 693, PASSING AT A DISTANCE OF 446.98 FEET A 1/2-INCH IRON PIPE FOUND FOR REFERENCE, AND CONTINUING FOR A TOTAL DISTANCE OF 566.43 FEET TO A 1/2-INCH IRON ROD WITH A "DOUCET" CAP SET AT THE SOUTHEAST CORNER OF A PROPOSED 13.585 ACRE TRACT, FOR THE MOST SOUTHERLY SOUTHWEST CORNER OF THE HEREIN DESCRIBED TRACT;

THENCE OVER AND ACROSS SAID ABSTRACT NUMBER 673 AND SAID 291-1/3 ACRE TRACT, PARALLEL TO AND OFFSET WEST FROM THE CENTERLINE OF A DRY CREEK BED, THE FOLLOWING TWENTY-SIX (26) COURSES AND DISTANCES:

1. N02°04'33"W, PASSING AT A DISTANCE OF 18.92 FEET A 1/2-INCH IRON PIPE FOUND FOR REFERENCE, AND CONTINUING FOR A TOTAL DISTANCE OF 94.44 FEET TO A 1/2-INCH IRON ROD WITH "DOUCET" CAP SET FOR AN ANGLE POINT;
2. N30°08'52"W, A DISTANCE OF 18.63 FEET TO A 1/2-INCH IRON ROD WITH "DOUCET" CAP SET FOR AN ANGLE POINT;
3. N04°12'41"E, A DISTANCE OF 29.46 FEET TO A 1/2-INCH IRON ROD WITH "DOUCET" CAP SET FOR AN ANGLE POINT;
4. N37°58'31"W, A DISTANCE OF 81.75 FEET TO A 1/2-INCH IRON ROD WITH "DOUCET" CAP SET FOR AN ANGLE POINT;
5. N03°03'30"E, A DISTANCE OF 77.47 FEET TO A 1/2-INCH IRON ROD WITH "DOUCET" CAP SET FOR AN ANGLE POINT;
6. N32°35'23"E, A DISTANCE OF 70.59 FEET TO A 1/2-INCH IRON ROD WITH "DOUCET" CAP SET FOR AN ANGLE POINT;
7. N45°11'02"W, A DISTANCE OF 97.26 FEET TO A 1/2-INCH IRON ROD WITH "DOUCET" CAP SET FOR AN ANGLE POINT;
8. N33°29'02"W, A DISTANCE OF 58.75 FEET TO A 1/2-INCH IRON ROD WITH "DOUCET" CAP SET FOR AN ANGLE POINT;
9. N21°39'42"E, A DISTANCE OF 31.90 FEET TO A 1/2-INCH IRON ROD WITH "DOUCET" CAP SET FOR AN ANGLE POINT;
10. N06°13'51"W, A DISTANCE OF 139.51 FEET TO A 1/2-INCH IRON ROD WITH "DOUCET" CAP SET FOR AN ANGLE POINT;
11. N00°23'49"E, A DISTANCE OF 75.11 FEET TO A 1/2-INCH IRON ROD WITH "DOUCET" CAP SET FOR AN ANGLE POINT;



12. N17°52'08"W, A DISTANCE OF 67.64 FEET TO A 1/2-INCH IRON ROD WITH "DOUCET" CAP SET FOR AN ANGLE POINT;
13. N11°19'38"E, A DISTANCE OF 104.20 FEET TO A 1/2-INCH IRON ROD WITH "DOUCET" CAP SET FOR AN ANGLE POINT;
14. N17°34'19"W, A DISTANCE OF 110.33 FEET TO A 1/2-INCH IRON ROD WITH "DOUCET" CAP SET FOR AN ANGLE POINT;
15. N07°27'07"W, A DISTANCE OF 254.36 FEET TO A 1/2-INCH IRON ROD WITH "DOUCET" CAP SET FOR AN ANGLE POINT;
16. N05°34'05"E, A DISTANCE OF 96.36 FEET TO A 1/2-INCH IRON ROD WITH "DOUCET" CAP SET FOR AN ANGLE POINT;
17. N14°14'54"E, A DISTANCE OF 114.91 FEET TO A 1/2-INCH IRON ROD WITH "DOUCET" CAP SET FOR AN ANGLE POINT;
18. N10°23'00"W, A DISTANCE OF 154.36 FEET TO A 1/2-INCH IRON ROD WITH "DOUCET" CAP SET FOR AN ANGLE POINT;
19. N19°22'37"W, A DISTANCE OF 148.90 FEET TO A 1/2-INCH IRON ROD WITH "DOUCET" CAP SET FOR AN ANGLE POINT;
20. N17°43'46"W, A DISTANCE OF 120.76 FEET TO A 1/2-INCH IRON ROD WITH "DOUCET" CAP SET FOR AN ANGLE POINT;
21. N14°17'07"W, A DISTANCE OF 131.27 FEET TO A 1/2-INCH IRON ROD WITH "DOUCET" CAP SET FOR AN ANGLE POINT;
22. N03°58'38"E, A DISTANCE OF 43.46 FEET TO A 1/2-INCH IRON ROD WITH "DOUCET" CAP SET FOR AN ANGLE POINT;
23. N41°27'27"W, A DISTANCE OF 51.28 FEET TO A 1/2-INCH IRON ROD WITH "DOUCET" CAP SET FOR AN ANGLE POINT;
24. N35°39'02"W, A DISTANCE OF 159.05 FEET TO A 1/2-INCH IRON ROD WITH "DOUCET" CAP SET FOR AN ANGLE POINT;
25. N11°24'17"W, A DISTANCE OF 103.63 FEET TO A 1/2-INCH IRON ROD WITH "DOUCET" CAP SET FOR AN ANGLE POINT;
26. N17°06'33"W, A DISTANCE OF 30.00 FEET TO A 1/2-INCH IRON ROD WITH "DOUCET" CAP SET ON THE EAST LINE OF SAID 206.2 ACRE TRACT, SAME BEING THE EAST LINE OF SAID



ABSTRACT NUMBER 415, ALSO BEING THE WEST LINE OF SAID ABSTRACT NUMBER 673 AND SAID 599 ACRE TRACT, AND ALSO BEING THE NORTH CORNER OF SAID PROPOSED 13.585 ACRE TRACT, FROM WHICH A 1-INCH IRON PIPE FOUND FOR THE NORTHEAST CORNER OF A CALLED 200 ACRE TRACT RECORDED IN VOLUME 171, PAGE 229 [D.R.H.C.T.], SAME BEING THE SOUTHEAST CORNER OF SAID 206.2 ACRE TRACT, ALSO BEING ON THE NORTH LINE OF A CALLED 200.4 ACRE TRACT, RECORDED IN DOCUMENT NUMBER 18036374 [O.P.R.H.C.T.], BEARS S00°50'48"E, A DISTANCE OF 485.11 FEET;

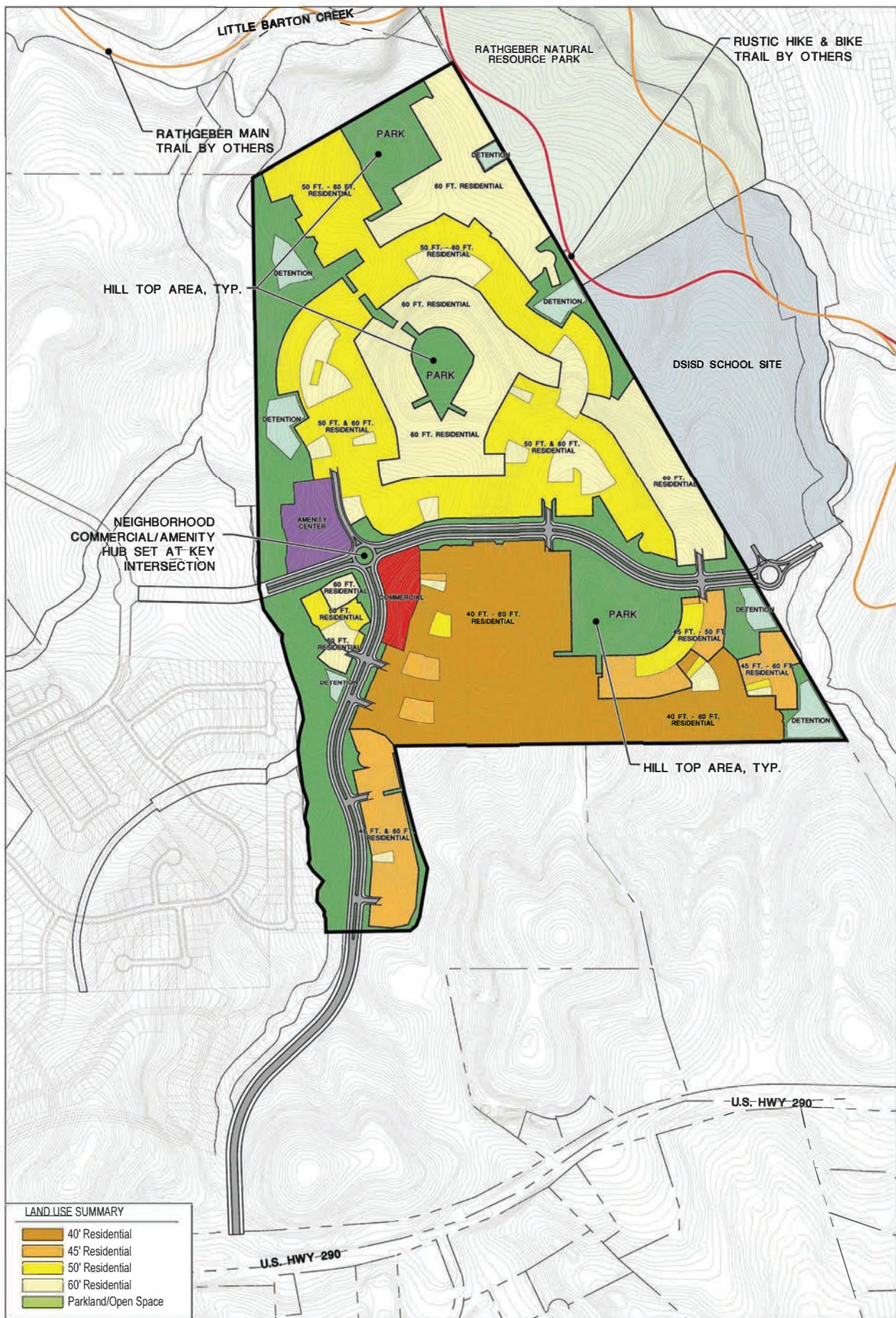
THENCE N00°50'48"W, WITH THE EAST LINE OF SAID ABSTRACT NUMBER 415 AND SAID 206.2 ACRE TRACT, SAME BEING THE WEST LINE OF SAID ABSTRACT NUMBER 673, SAID 291-1/3 ACRE TRACT, AND SAID 599 ACRE TRACT, PASSING AT A DISTANCE OF 1,566.62 FEET, A POINT FROM WHICH A STONE MOUND, FOUND FOR THE NORTHEAST CORNER OF SAID ABSTRACT NUMBER 673, BEARS N89°09'19"E, A DISTANCE OF 1,423.11 FEET, AND CONTINUING FOR A TOTAL DISTANCE OF 2,777.38 FEET, BACK TO THE POINT OF BEGINNING OF THE HEREIN DESCRIBED TRACT, CONTAINING 283.42 ACRES.

I, Garrett Cavaiuolo, Registered Professional Land Surveyor, hereby certify that this property description represents an actual survey performed on the ground under my supervision.

8/18/2020
Date

Garrett Cavaiuolo
Registered Professional Land Surveyor
Texas Registration No. 6714
Doucet & Associates
GCavaiuolo@DoucetEngineers.com
TBPELS Firm Registration No. 10105800



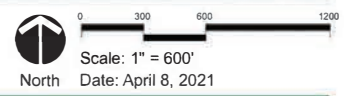


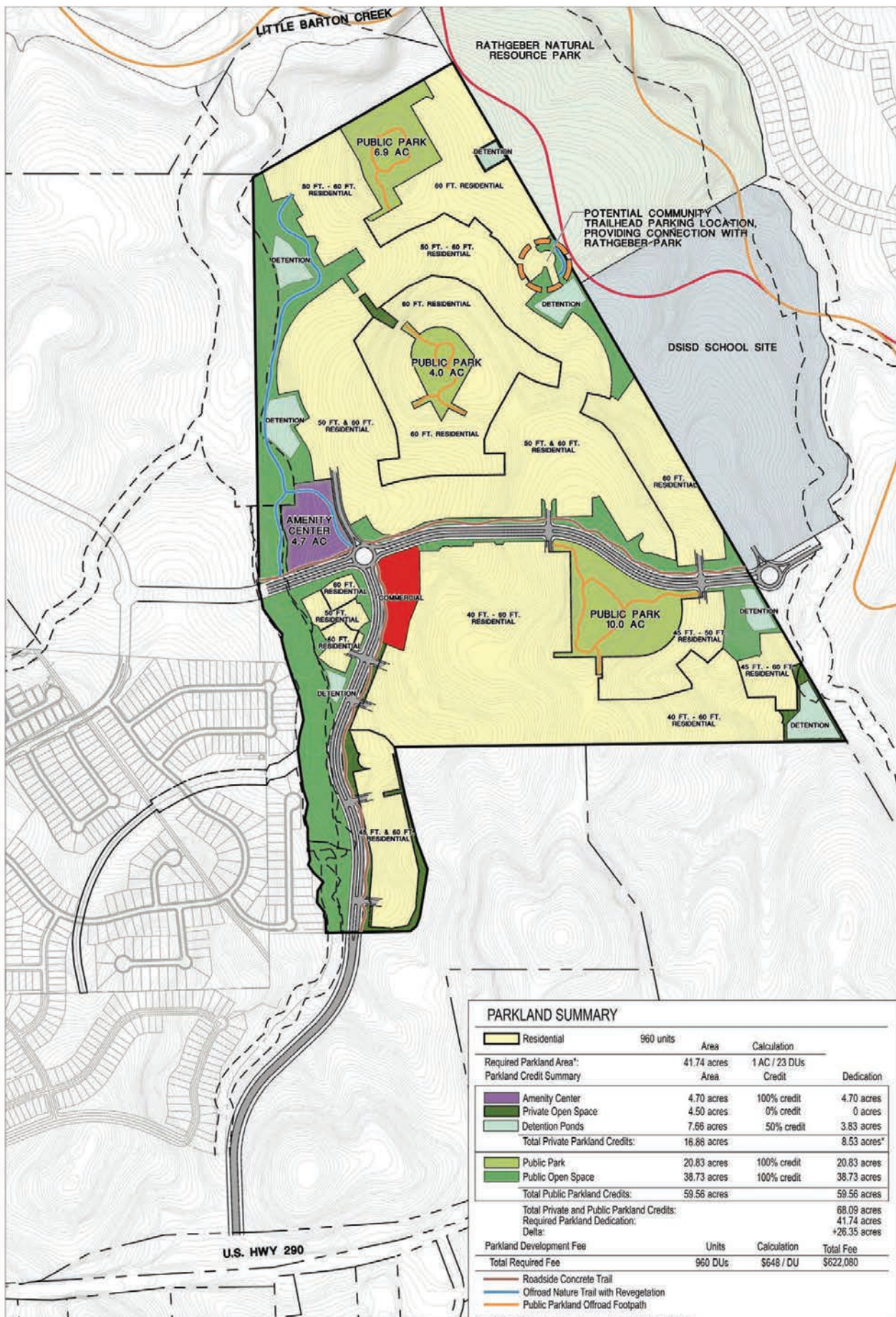
LAND USE SUMMARY

	40' Residential
	45' Residential
	50' Residential
	60' Residential
	Parkland/Open Space

**EXHIBIT B
PD MASTER PLAN
WILD RIDGE**

MERITAGE HOMES
DRIPPING SPRINGS, TEXAS



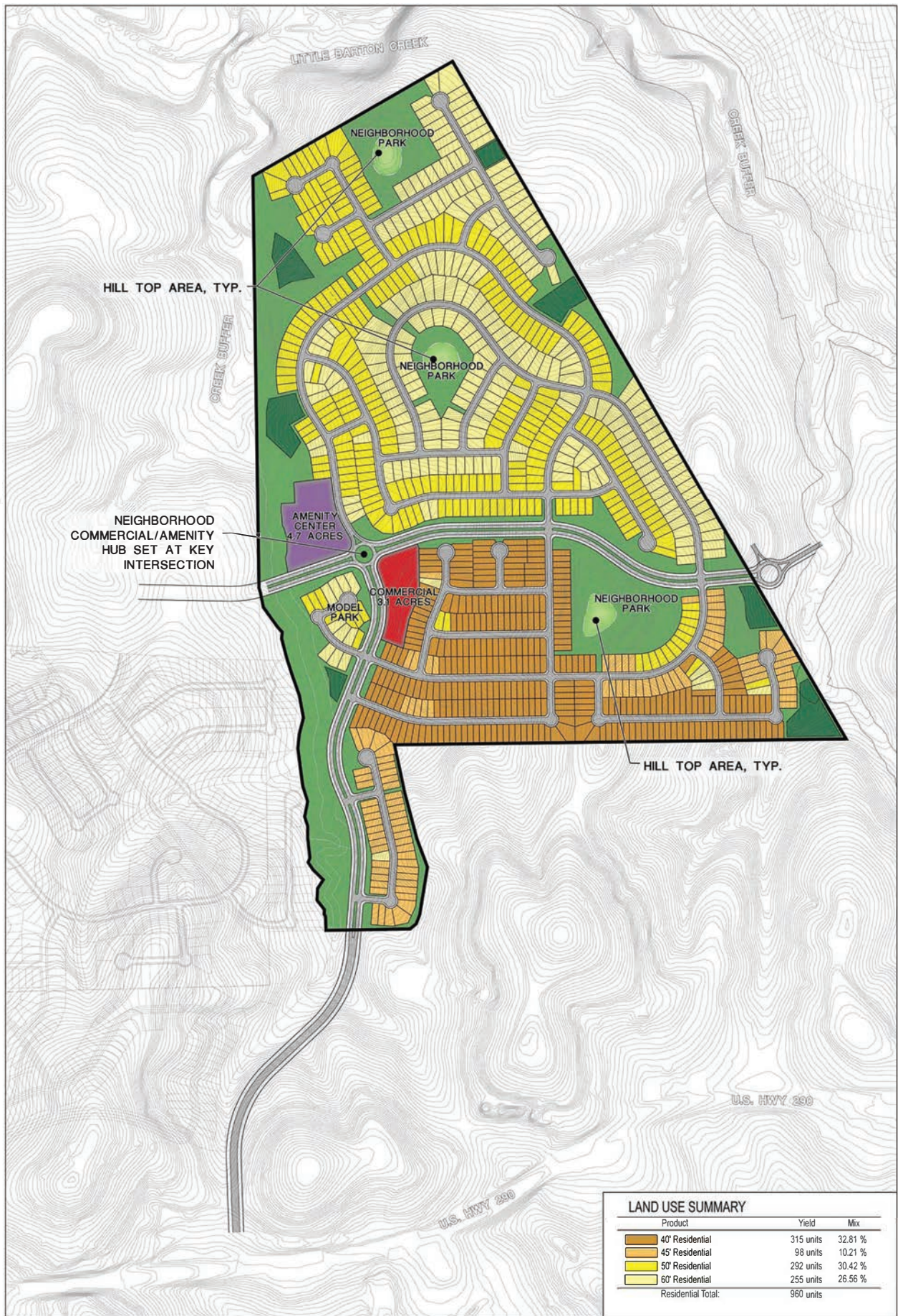


PARKLAND SUMMARY

Residential	960 units	Area	Calculation	
		41.74 acres	1 AC / 23 DUs	
Required Parkland Area*		Area	Credit	Dedication
Amenity Center	4.70 acres	100% credit	4.70 acres	
Private Open Space	4.50 acres	0% credit	0 acres	
Detention Ponds	7.66 acres	50% credit	3.83 acres	
Total Private Parkland Credits:		16.86 acres		8.53 acres*
Public Park	20.83 acres	100% credit	20.83 acres	
Public Open Space	38.73 acres	100% credit	38.73 acres	
Total Public Parkland Credits:		59.56 acres		59.56 acres
Total Private and Public Parkland Credits:				68.09 acres
Required Parkland Dedication:				41.74 acres
Delta:				+26.35 acres
Parkland Development Fee		Units	Calculation	Total Fee
Total Required Fee		960 DUs	\$648 / DU	\$622,080
<ul style="list-style-type: none"> — Roadside Concrete Trail — Offroad Nature Trail with Vegetation — Public Parkland Offroad Footpath 				

*PRIVATE PARKS CAN COUNT UP TO 25% OF TOTAL REQUIRED PARKLAND ACRES

**EXHIBIT C
PARKS, TRAILS, & OPEN SPACE
WILD RIDGE**

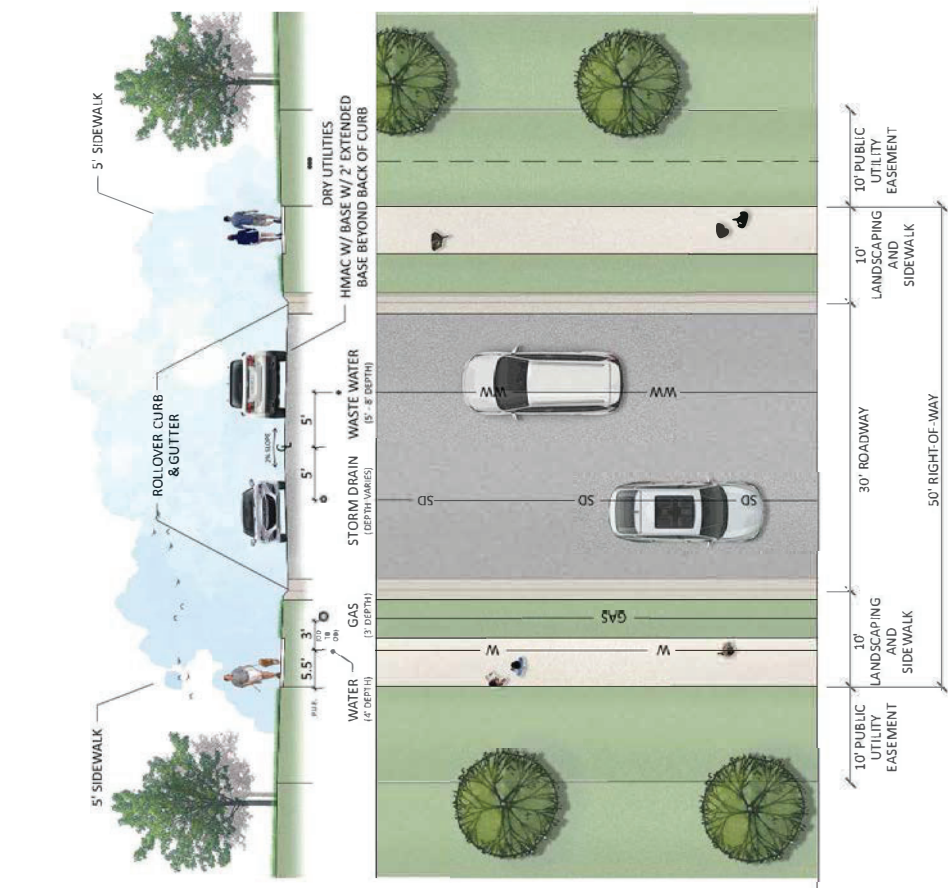


LIST OF VARIANCES & ALTERNATIVE STANDARDS

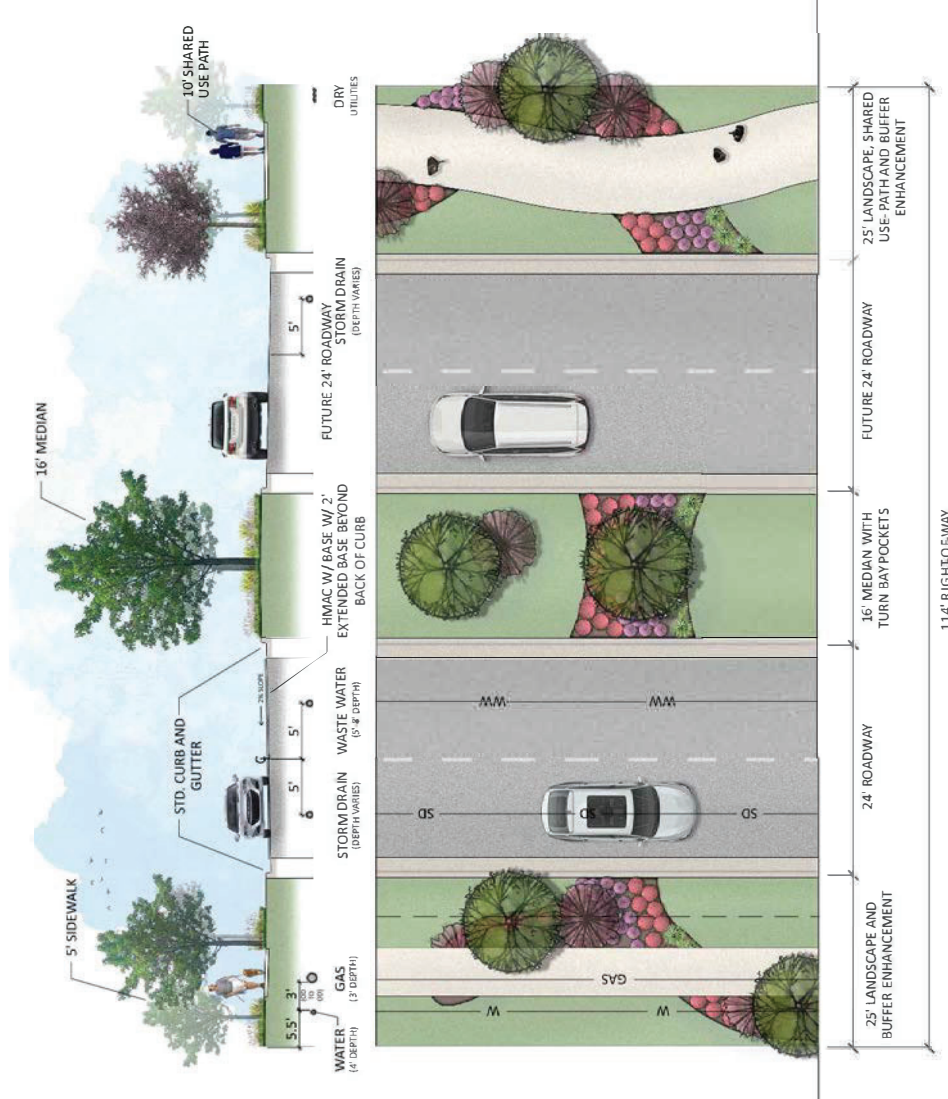
#	Ordinance	Description	Requirement	Requested Variance or Alternative	Justification
1	22.05.016(a)(2)	Maximum Impervious Cover	Sets maximum impervious cover for site development plans within the Edwards Aquifer contributing zone and the ETJ to 35%	Maximum impervious cover for the Property within the Edwards Aquifer Contributing zone will be 50%	To have the ability to respond to evolving and diversified housing market. To provide a variety of housing types with variety of lot sizes. In addition, to allow major transportation infrastructure and a commercial sector.
2	22.05.015(c)(3)	Performance standards	Establishes 90% removal of total suspended solids, total phosphorus, and oil and grease	Use water quality BMPs that achieve a TSS removal of 89% and comply with the TCEQ Optional Enhanced Measures (OEM) load management requirements.	Providing water quality buffer zones per the City of Dripping Springs requirements and including the LCRA Streambank Erosion Control volume in the water quality pond to protect natural waterways and habitat. Will create better use of the land, less long-term maintenance burden, more attractive water quality measures, and consistent with State standards.
4	(Exhibit A), 3.13	Lapse of plat approval	<u>Preliminary Plat:</u> All of the following shall occur within the one hundred and eighty-three (183) calendar days following Preliminary Plat approval: 1) City Engineer's approval of engineering plans for all proposed public improvements; and 2) payment of all applicable fees that are traditionally collected prior to release for site construction. In addition to the above, an application for approval of the final plat shall be submitted to the City within three hundred sixty-five (365) calendar days following approval of the preliminary plat in order to avoid lapse of the approved Preliminary Plat (unless such is extended or reinstated pursuant to provisions in this Chapter).	Preliminary Plat: All of the following shall occur within the one hundred and eighty-three (183) calendar days following Multi-Phased Preliminary Plat approval: 1) City Engineer's approval of engineering plans for Phase 1 proposed public improvements; and 2) payment of all applicable fees that are traditionally collected prior to release for site construction for Phase 1. In addition to the above, an application for approval of the Phase 1 final plat shall be submitted to the City within three hundred sixty-five (365) calendar days following approval of the preliminary plat in order to avoid lapse of the approved Preliminary Plat (unless such is extended or reinstated pursuant to provisions in this Chapter). Once conditions of Phase 1 are met the Preliminary Plat shall be valid for 10 years.	Allows time for the construction of infrastructure improvements prior to recordation of plats.
5	(Exhibit A), 3.13	Lapse of plat approval	<u>Final plat approved by the City Council but not yet filed with Hays County</u> - All materials necessary to file the plat at the County, including plat mylars, filing fees, etc., shall be submitted to the City within thirty (30) calendar days of the date of final approval (The thirty-day period shall commence upon County approval of final plat if the property is in the ETJ).	<u>Final plat approved by the City Staff but not yet filed with Hays County</u> - All materials necessary to file the plat at the County, including plat mylars, filing fees, etc., shall be submitted to the City within three hundred and sixty five (365) calendar days of the date of final approval.	Allows time for the construction of infrastructure improvements prior to recordation of plats.
6	(Exhibit A), 11.13.2	Frontage on Residential Collector Streets	Shall not exceed 20%	Applicable only to major collectors, minor arterials, and major arterials.	To showcase the lively neighborhood character with homes fronting streets where possible.

LIST OF VARIANCES & ALTERNATIVE STANDARDS

#	Ordinance	Description	Requirement	Requested Variance or Alternative	Justification
7	(Exhibit A), 11.21	Residential block lengths	Min. 400'. Max 1200-1600' urban subdivisions, 2000' suburban and rural subdivisions.	Property considered a suburban subdivision with a 2000' maximum block length requirement.	This relates only to the perimeter of the property where access to neighboring property is limited by topographic conditions and adjacent land use
8	(Exhibit A), 13.2	Intersecting Streets	Blocks shall not be less than four hundred feet (400') in length	Blocks shall not be less than two hundred feet (200') in length	Considering unique topographic conditions that may reduce intersection distances.
9	(Exhibit A), 14.6	Minimum Lot Sizes	For lots using surface water and public wastewater system is 0.75 acres	No variance requested since Property will be located within city limits.	
10	(Exhibit A), 15.1	Sidewalks	Required on both sides of all streets, 5' min. width or as specified in City TMP.	5' sidewalks and 10' multi-modal use path will be provided on each side of arterial streets.	To fuse the hill country character within the community, and City TMP not yet adopted prior to approval date of this PDD
11	(Exhibit A), 20.1.3(g)	Sidewalks	Both sides of street in both residential and non-residential developments utilizing curb (not open ditch drainage). Required in conjunction with sewer line installation.	Sidewalks adjacent to residential lots constructed by the home builders at the time of home construction. Sidewalks not adjacent to residential lots will be constructed at time of roadway construction.	To fuse the hill country character within the community.
12	(Exhibit A), 30.2.5	Performance Guarantees and Security	Security shall be in an amount equal to 100 percent of the estimated cost of completion of the required public improvements and lot or unit improvements	No variance requested since Property will be located within city limits.	
13	28.04.018	Cuts and fills	No fill or cut on any building site shall exceed a maximum of six (6) feet of depth	Improvements requiring a site development permit will be held to no more than 12' of cut and/or fill.	To respond to topographic conditions.
14	28.06.051 (a&b)	Residential & Non-Residential Street Tree Requirements	Two (2) 4" street trees per residential lot; One (1) 4" street tree per 25 lf of street frontage to be planted adjacent to or near street right-of-way per associated zoning classification.	Two (2) 3-inch street trees per residential lot; 4-inch street trees along arterials, and within the Amenity Center lot to satisfy City tree replacement requirements.	Consistency with industry standards for residential lot trees. The development will provide a strong streetscape with mature trees earlier in the life of the project with this street tree planting plan.
15	CODS TCSS Section 2.2.1	Design criteria for transportation facilities	Hays County Subdivision and Development Regulations, latest version	City of Austin Transportation Criteria Manual (TCM), as currently amended, or as otherwise specified by the City TMP.	Hays County criteria based on larger lot, rural subdivisions with higher design speeds. City of Austin TCM is better suited for urban subdivisions with slower design speeds and land with significant topography similar to the Property
16	CODS TCSS Section 9.2.2(a)(1)	Side slopes on swales	No steeper than 1 vertical to 6 horizontal	No steeper than 1 vertical to 4 horizontal	Complies with City of Austin, Drainage Criteria Manual 6.4.1.D
18	Zoning 5.6.2.12	Parking Requirement for Commercial Amusement (Outdoor)	Ten (10) spaces plus one (1) space for each 500 square feet over 5,000 square feet of building or recreational area.	One (1) parking space per three-hundred (300) square feet of pool surface area.	Private Amenity Centers are meant to be walkable for the community, reducing the reliance on large parking areas. Trail connections and bike racks will be provided at the amenity to reduce the need for excessive parking.



STREET (50' R.O.W.)
2-LANE RESIDENTIAL LOCAL
 Scale: 1" = 20'



ROADWAY (114' R.O.W.)
4-LANE MINOR ARTERIAL
 Scale: 1" = 20'

EXHIBIT I

PD Uses Chart:

The uses permitted in PDD – ___ are as follows:

Residential areas:

- Single-Family Dwelling, Detached;
- Garden Home/Townhome;
- Accessory Bldg/Structure (Residential);
- Home Occupation;
- Swimming Pool, Private;
- Community Center, Private; and
- Those uses listed in the City's zoning ordinance for the SF-3 District or any less intense residential district uses are hereby permitted by right within the Project, and others are designated as requiring a Conditional Use Permit (CUP).

Commercial Area:

- Used allowed in Local Retail (LR) zone except that residential uses, including multi-family, are prohibited in the Commercial Area. Financial institutions are allowed in the Commercial Area.