



**To: Mayor Bill Foulds Jr. & City Council**  
**From: Tory Carpenter, AICP – Planning Director**  
**Date: June 17, 2025**  
**RE: Resolution of Support for Sawyer Ranch Road Shared Use Path Project**

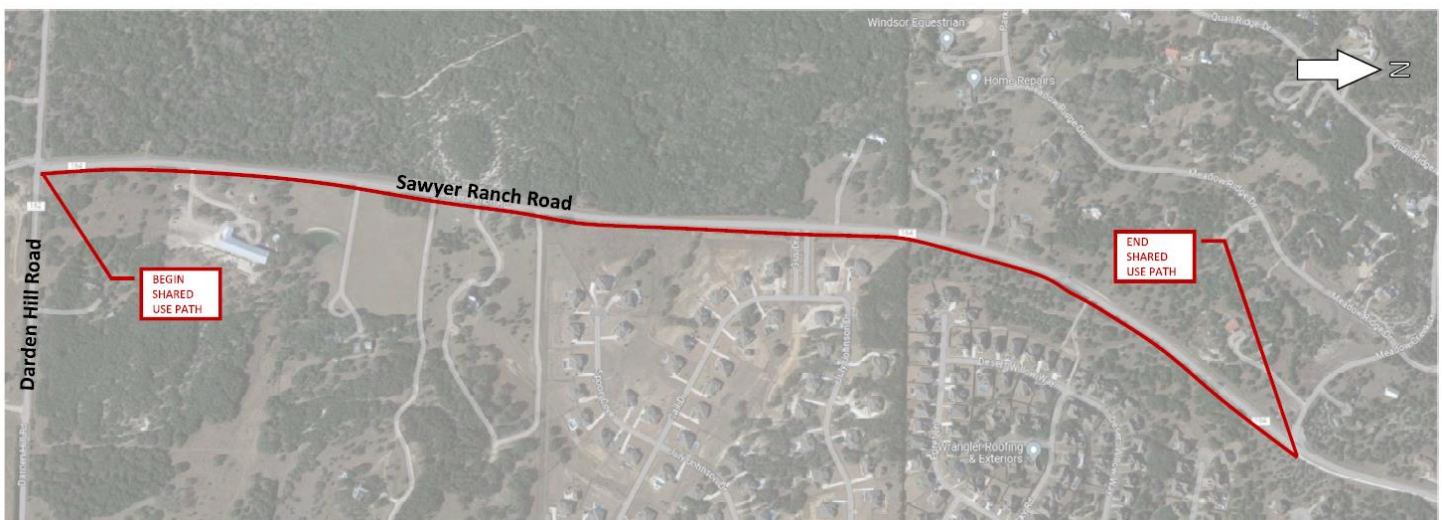
## **I. Overview**

Hays County requests City Council approval of a resolution of support for the Sawyer Ranch Road Shared Use Path project. The resolution request is associated with the County's grant application to the Texas Department of Transportation (TxDOT) for the 2025 Transportation Alternatives Program (TA). If awarded, this grant would help fund construction of a pedestrian and bicycle connection on the east side of Sawyer Ranch Road, from Meadow Creek Drive to Darden Hill Road.

## **II. Background**

The Sawyer Ranch Road Shared Use Path Extension is a proposed 1.3-mile, 10-foot-wide concrete path with ADA-compliant design features including retaining walls, handrails, and driveway regrading. The project will provide a continuous non-motorized route connecting existing shared use facilities and area schools, including Cypress Springs Elementary and Sycamore Springs Middle School.

This corridor lacks safe pedestrian and bicycle infrastructure. This project aligns with goals in the City's Transportation Master Plan and broader regional mobility efforts.



## **III. Key Project Details**

- **Location:** East side of Sawyer Ranch Road (CR 164) between Meadow Creek Drive and Darden Hill Road (CR 162).
- **Scope:** Construction of 1.3-mile shared use path, curb and drainage improvements, handrails, ADA upgrades.
- **Design:** Conceptual design is complete; project will be fully engineered following grant award.
- **Cost Estimate:** \$3.6 million total project cost
  - \$2,889,600 requested from TxDOT
  - \$722,400 committed local match from Hays County (20%)
- **Construction Timeline:** Anticipated completion by September 2026, contingent on award.
- **City Financial Impact:** No monetary contribution or maintenance obligation is requested from the City of Dripping Springs.