

CITY OF DRIPPING SPRINGS

Park System Signage Phase 1

Addendum #1

January 2023

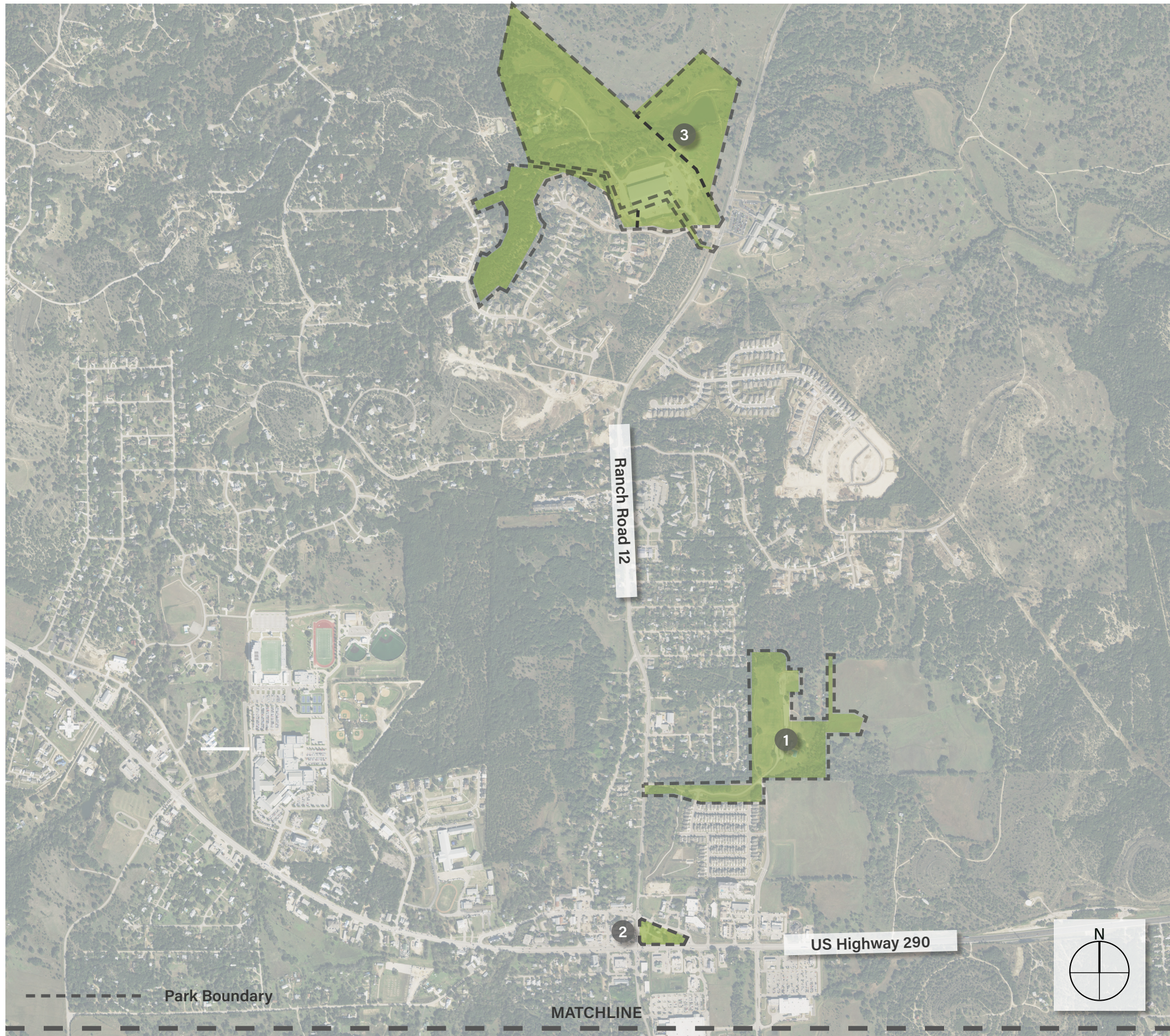
CONTENTS

- Key Map
- Existing Signage Inventory by Park
- Proposed Signage Locations by Park
- Proposed Signage Concepts
- Add Alternate Appendix:
Signage Not in Contract & Existing Sign Inventory Photo Array



CLIENT
City of Dripping Springs
511 Mercer Street
Dripping Springs, Texas 78620

DESIGN TEAM
Studio16:19
305 W. Liberty Ave, Suite 100
Round Rock, TX 78664



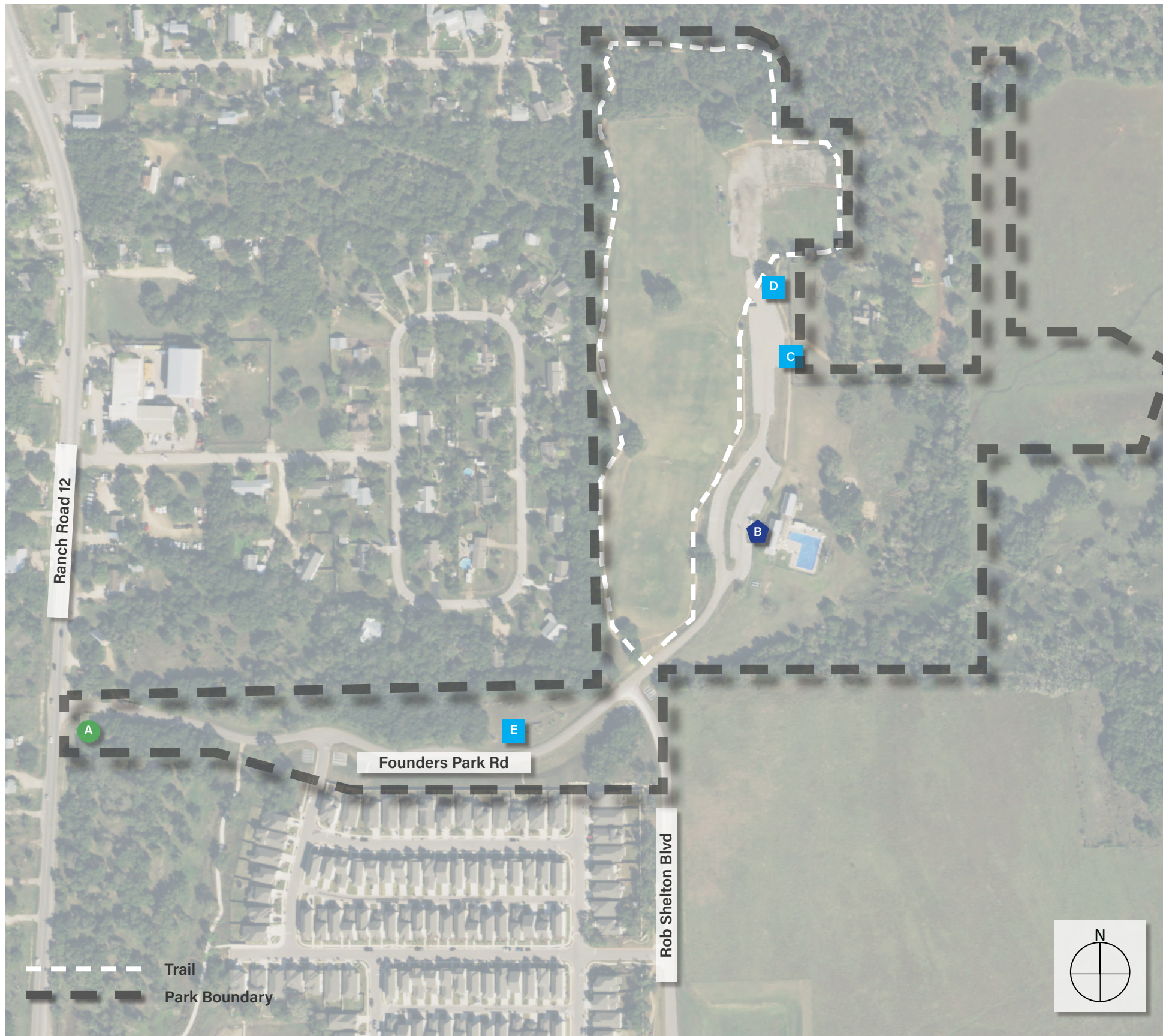
Disclaimer:
 This document represents design progress and its provision, either electronic or hard copy, is to communicate design intent only. Original and published work may not be duplicated, used, or disclosed without the written consent of Studio16:19.

Dripping Springs Key Map (North)

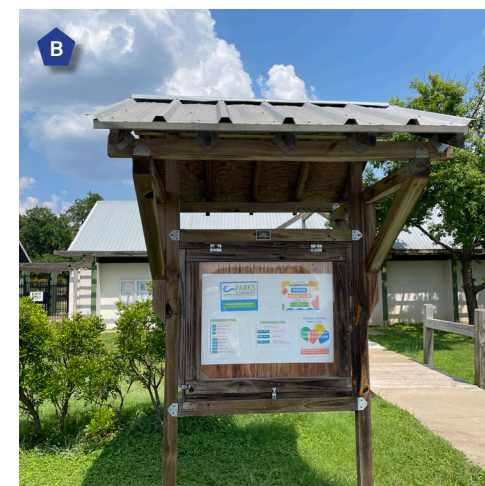


Dripping Springs Key Map (South)

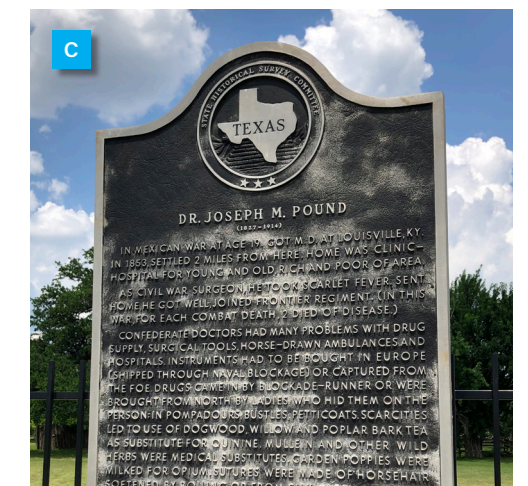
Disclaimer:
 This document represents design progress and its provision, either electronic or hard copy, is to communicate design intent only. Original and published work may not be duplicated, used, or disclosed without the written consent of Studio16:19.



ENTRANCE MONUMENT SIGN (1)



INFO KIOSK (1)



PARK RULES/INFO SIGN (3)



Disclaimer:
This document represents design progress and its provision, either electronic or hard copy, is to communicate design intent only. Original and published work may not be duplicated, used, or disclosed without the written consent of Studio16:19.

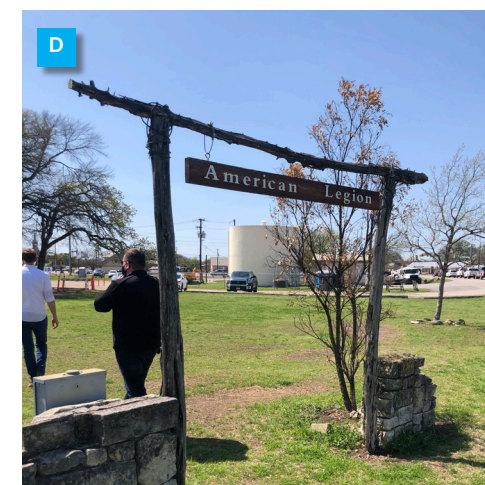
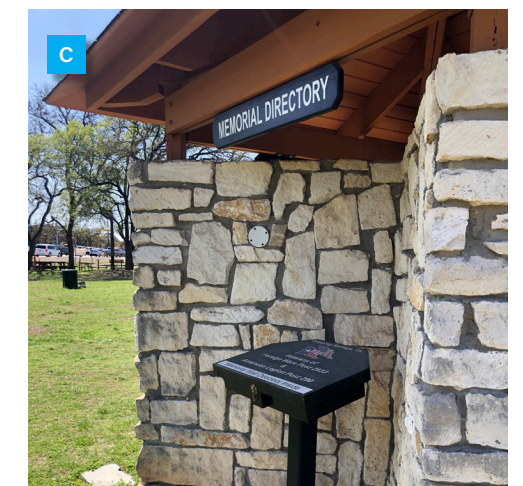
Founders Memorial Park - Existing Signage Inventory (Quantity)



ENTRANCE MONUMENT SIGN (1)



PARK RULES/INFO SIGN (3)



Veterans Memorial Park - Existing Signage Inventory (Quantity)

Disclaimer:
This document represents design progress and its provision, either electronic or hard copy, is to communicate design intent only. Original and published work may not be duplicated, used, or disclosed without the written consent of Studio16:19.



● Proposed Vehicular Identification Sign (2)

- A. Primary Identification
Ref. Dtl. 1.A/ Pg. 8
- B. Secondary Identification
Ref. Dtl. 1.B/ Pg. 8

■ Proposed Large Vehicular Wayfinding Sign (1)

- C. Pool/Pavilion
Playground
The Pound House
Skate Park
North/Middle Field
South Field
Cactus Garden
Ref. Dtl. 2.C/ Pg. 8

◆ Proposed Pedestrian Info/Kiosk Sign (1)

- D. Park Rules & Pound House Info
Ref. Dtl. 1.D/ Pg. 9

▲ Proposed Pedestrian Directional Sign (2)

- E. Trailhead
Cactus Garden
Skate Park
Ref. Dtl. 2.E/ Pg. 9
- F. Trailhead
The Pound House
Skate Park
Ref. Dtl. 2.F/ Pg. 9

▲ Proposed Small Pedestrian Trail Marker (3)

- G. Ref. Dtl. 2.G/ Pg. 9

■ Existing Signs to Remain (2)

Disclaimer:
This document represents design progress and its provision, either electronic or hard copy, is to communicate design intent only. Original and published work may not be duplicated, used, or disclosed without the written consent of Studio16:19.

Founders Memorial Park - Proposed Signage Locations (Quantity)



3-Sided Sign Structure with Banners (1)

A. City Events & Advertisements

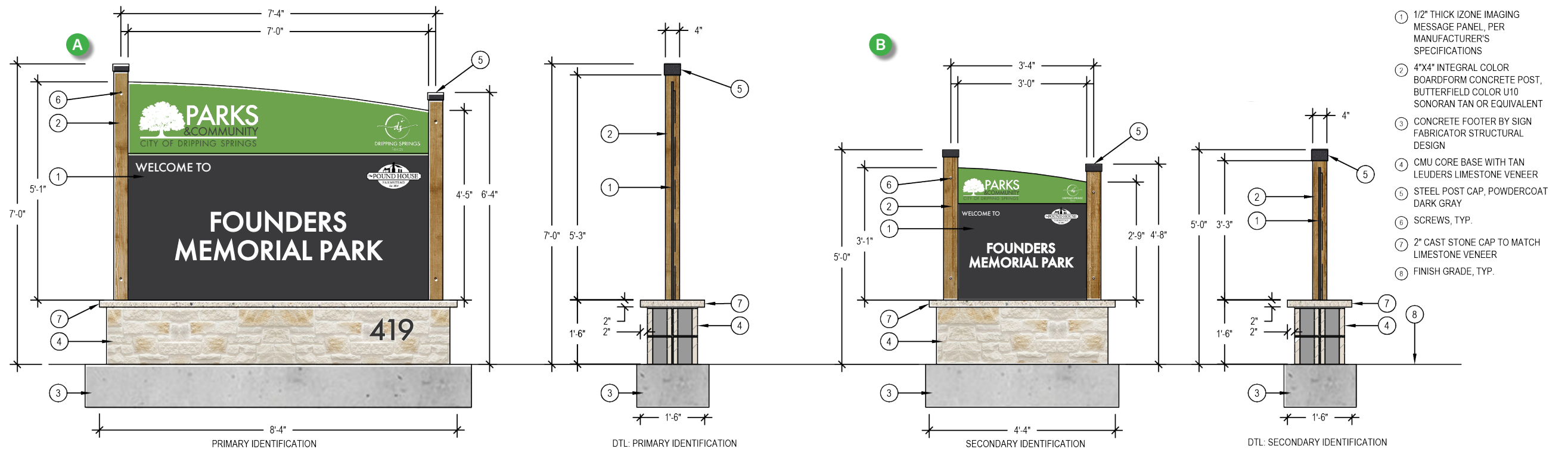
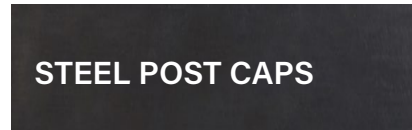
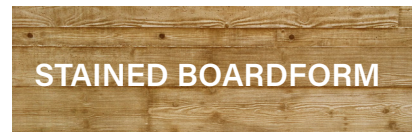
Ref. Dtl. 1-2/ Pg. 10

Existing Signs to Remain (4)

Veterans Memorial Park - Proposed Signage Locations (Quantity)

Disclaimer:
 This document represents design progress and its provision, either electronic or hard copy, is to communicate design intent only. Original and published work may not be duplicated, used, or disclosed without the written consent of Studio16:19.

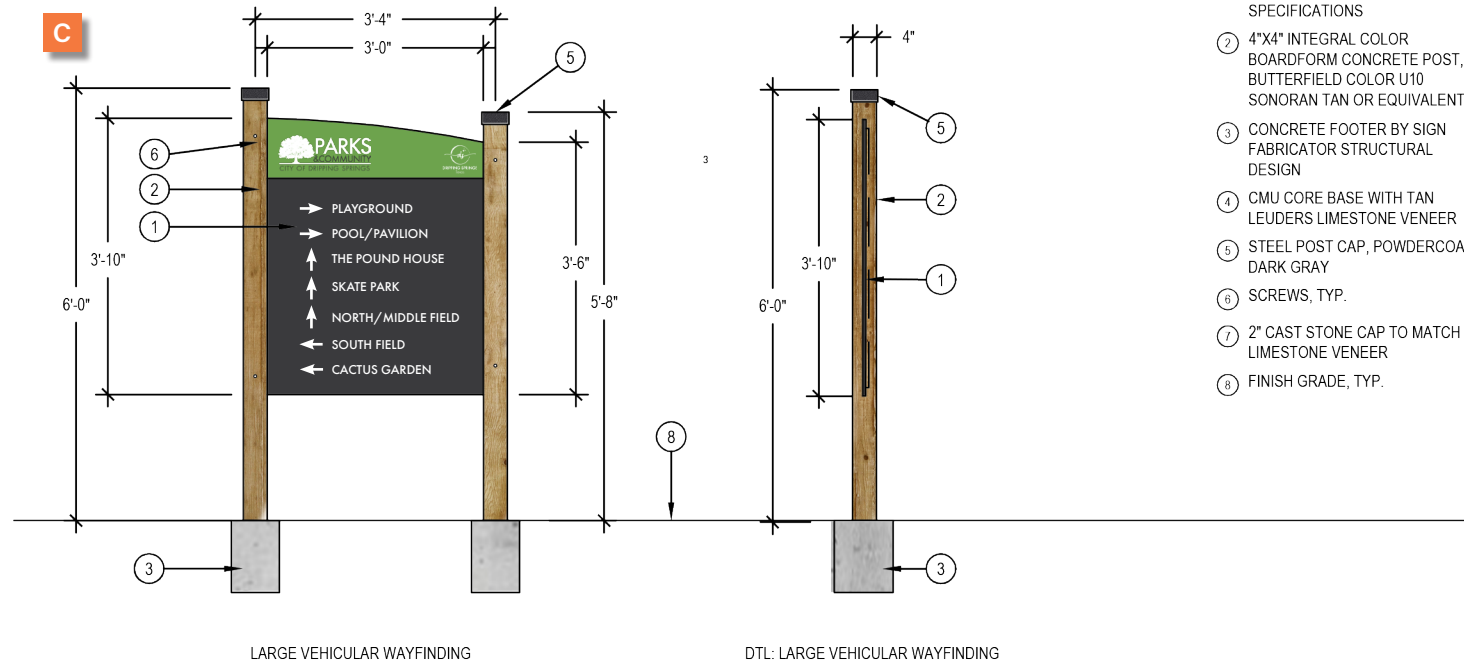
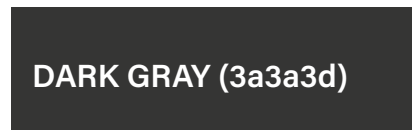
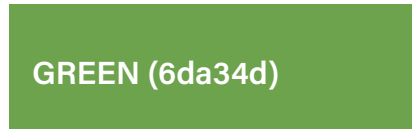
MATERIALS



1 VEHICULAR IDENTIFICATION SIGNAGE

SCALE: 3/8" = 1'-0"

IZONE PANEL COLORS



2 VEHICULAR IDENTIFICATION SIGNAGE

SCALE: 3/8" = 1'-0"

FONT:

Futura PT: Medium

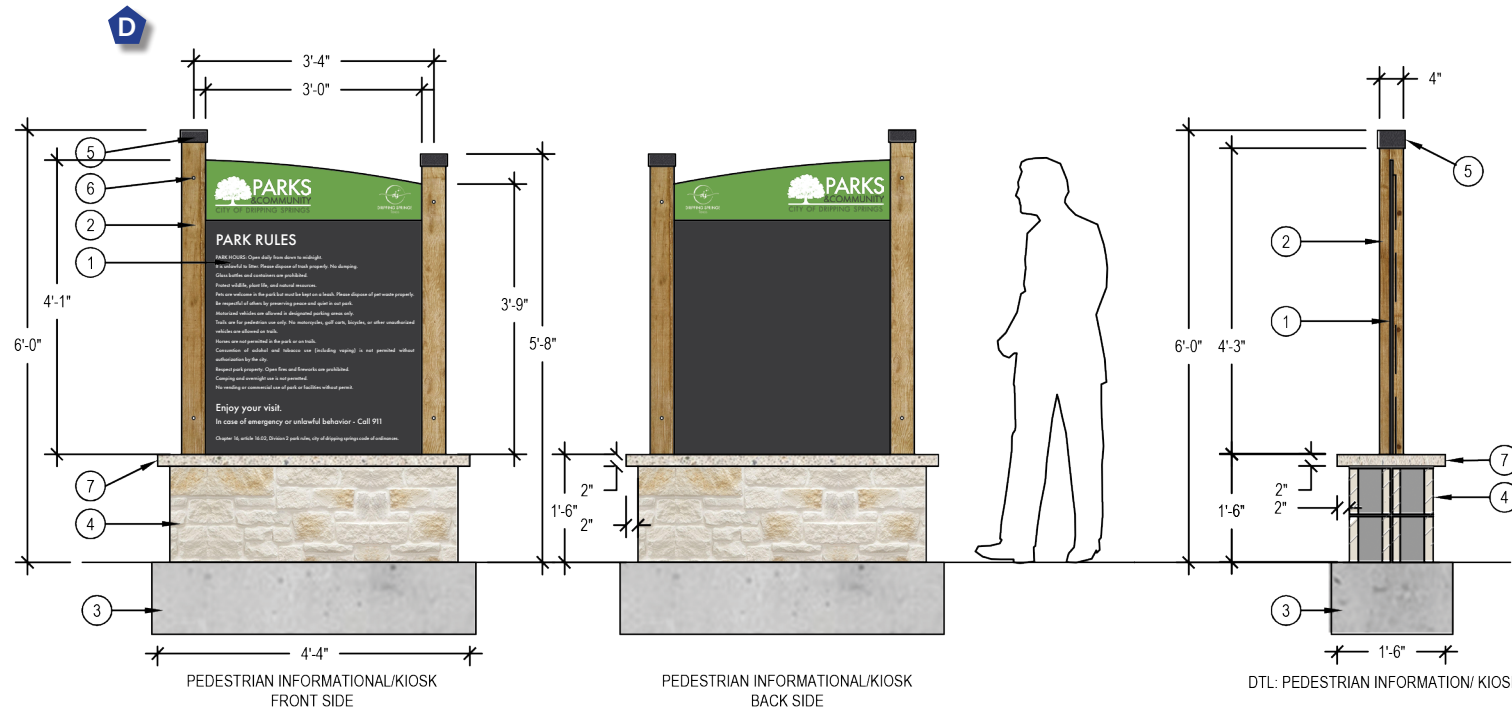
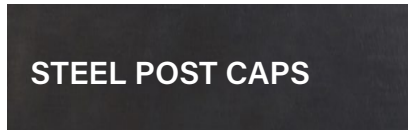
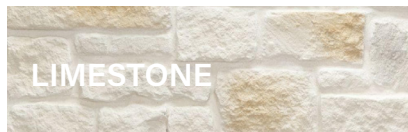
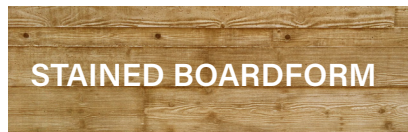
ABCDEFGHIJKLMNOPQRSTUVWXYZ
 abcdefghijklmnopqrstuvwxyz
 1234567890

Founders Memorial Park Signage

Note: Contractor to provide signed and sealed professional engineering documents for all sign foundations and footings, to be reviewed and approved by the City Engineer. Contractor to include all engineering related costs in statement of bid. Prior to sign installation, contractor shall field locate and stake sign locations for review and approval by the City Engineer.

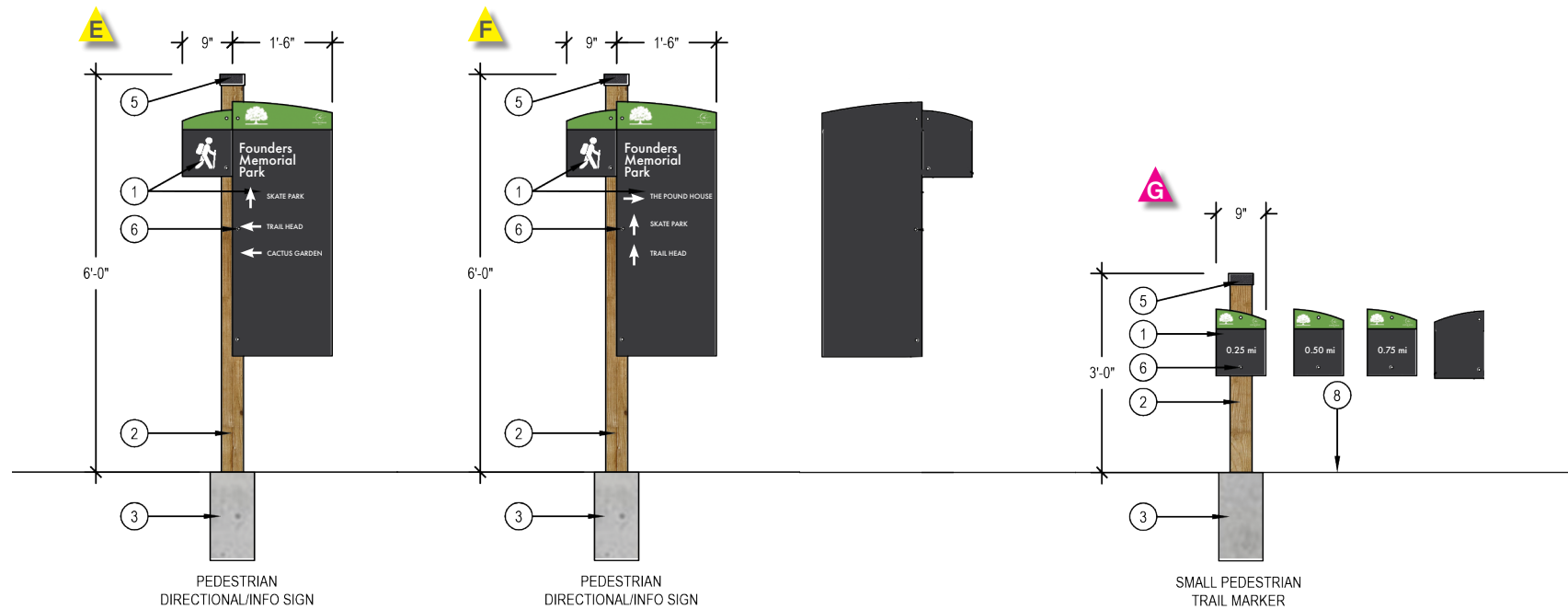
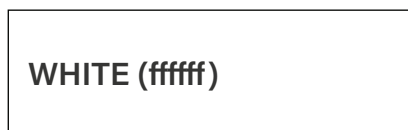
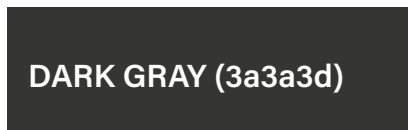
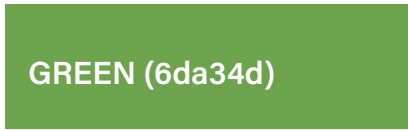
Disclaimer:
 This document represents design progress and its provision, either electronic or hard copy, is to communicate design intent only. Original and published work may not be duplicated, used, or disclosed without the written consent of Studio16:19.

MATERIALS



- ① 1/2" THICK IZONE IMAGING MESSAGE PANEL, PER MANUFACTURER'S SPECIFICATIONS
- ② 4"x4" INTEGRAL COLOR BOARDFORM CONCRETE POST, BUTTERFIELD COLOR U10 SONORAN TAN OR EQUIVALENT
- ③ CONCRETE FOOTER BY SIGN FABRICATOR STRUCTURAL DESIGN
- ④ CMU CORE BASE WITH TAN LEUDERS LIMESTONE VENEER
- ⑤ STEEL POST CAP, POWDERCOAT DARK GRAY
- ⑥ SCREWS, TYP.
- ⑦ 2" CAST STONE CAP TO MATCH LIMESTONE VENEER
- ⑧ FINISH GRADE, TYP.

IZONE PANEL COLORS



- ① 1/2" THICK IZONE IMAGING MESSAGE PANEL, PER MANUFACTURER'S SPECIFICATIONS
- ② 4"x4" INTEGRAL COLOR BOARDFORM CONCRETE POST, BUTTERFIELD COLOR U10 SONORAN TAN OR EQUIVALENT
- ③ CONCRETE FOOTER BY SIGN FABRICATOR STRUCTURAL DESIGN
- ④ CMU CORE BASE WITH TAN LEUDERS LIMESTONE VENEER
- ⑤ STEEL POST CAP, POWDERCOAT DARK GRAY
- ⑥ SCREWS, TYP.
- ⑦ 2" CAST STONE CAP TO MATCH LIMESTONE VENEER
- ⑧ FINISH GRADE, TYP.

FONT:

Futura PT: Medium

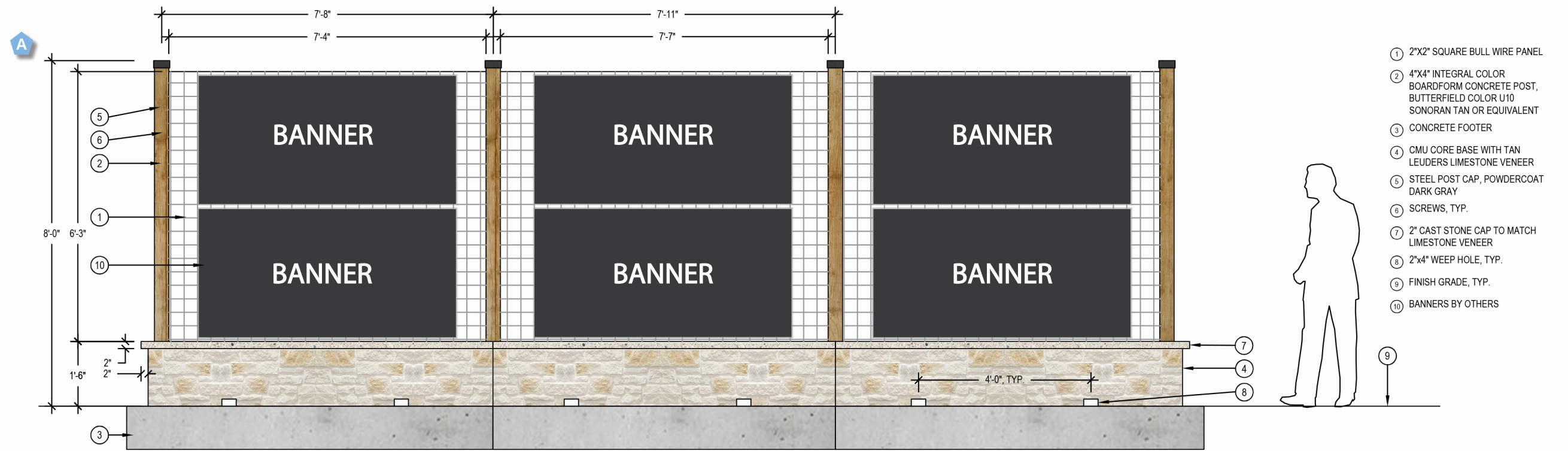
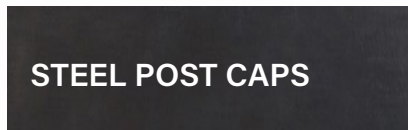
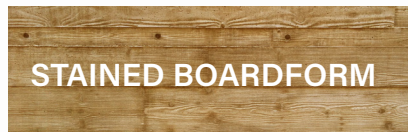
ABCDEFGHIJKLMNOPQRSTUVWXYZ
 abcdefghijklmnopqrstuvwxyz
 1234567890

Founders Memorial Park Signage

Note: Contractor to provide signed and sealed professional engineering documents for all sign foundations and footings, to be reviewed and approved by the City Engineer. Contractor to include all engineering related costs in statement of bid. Prior to sign installation, contractor shall field locate and stake sign locations for review and approval by the City Engineer.

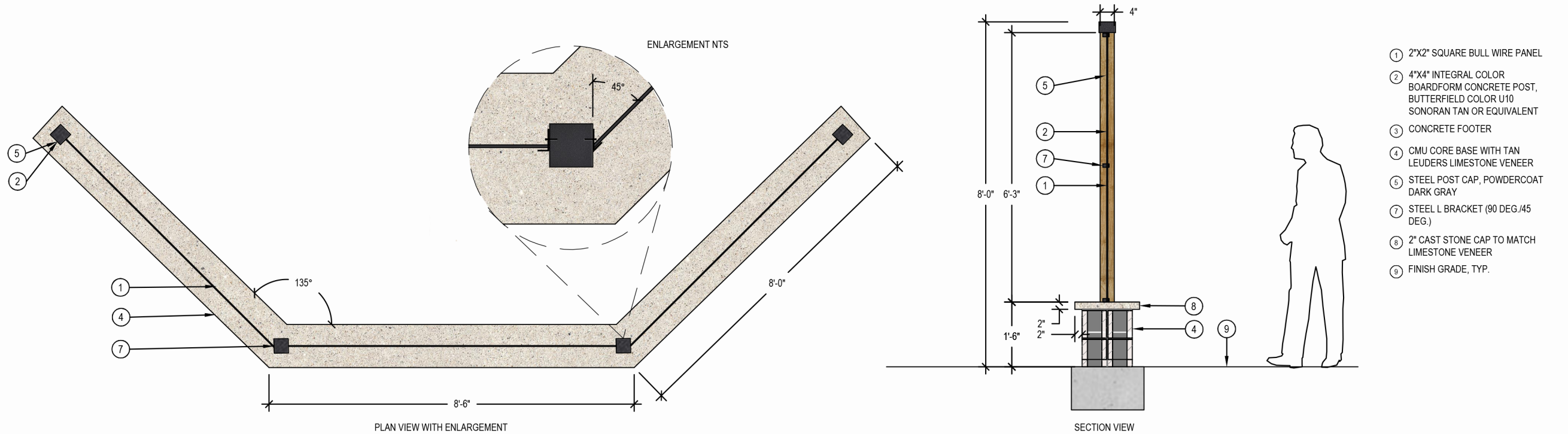
Disclaimer:
 This document represents design progress and its provision, either electronic or hard copy, is to communicate design intent only. Original and published work may not be duplicated, used, or disclosed without the written consent of Studio16:19.

MATERIALS



1 THREE SIDED SIGN STRUCTURE FOR BANNERS

SCALE: 3/8" = 1'-0"



2 THREE SIDED SIGN STRUCTURE FOR BANNERS

SCALE: 3/8" = 1'-0"

Veterans Memorial Park Signage

Note: Contractor to provide signed and sealed professional engineering documents for all sign foundations and footings, to be reviewed and approved by the City Engineer. Contractor to include all engineering related costs in statement of bid. Prior to sign installation, contractor shall field locate and stake sign locations for review and approval by the City Engineer.

Disclaimer: This document represents design progress and its provision, either electronic or hard copy, is to communicate design intent only. Original and published work may not be duplicated, used, or disclosed without the written consent of Studio16:19.

Add Alternate Appendix: **NOT IN CONTRACT**

Disclaimer:
This document represents design progress and its provision, either electronic or hard copy, is to communicate design intent only. Original and published work may not be duplicated, used, or disclosed without the written consent of Studio16:19.





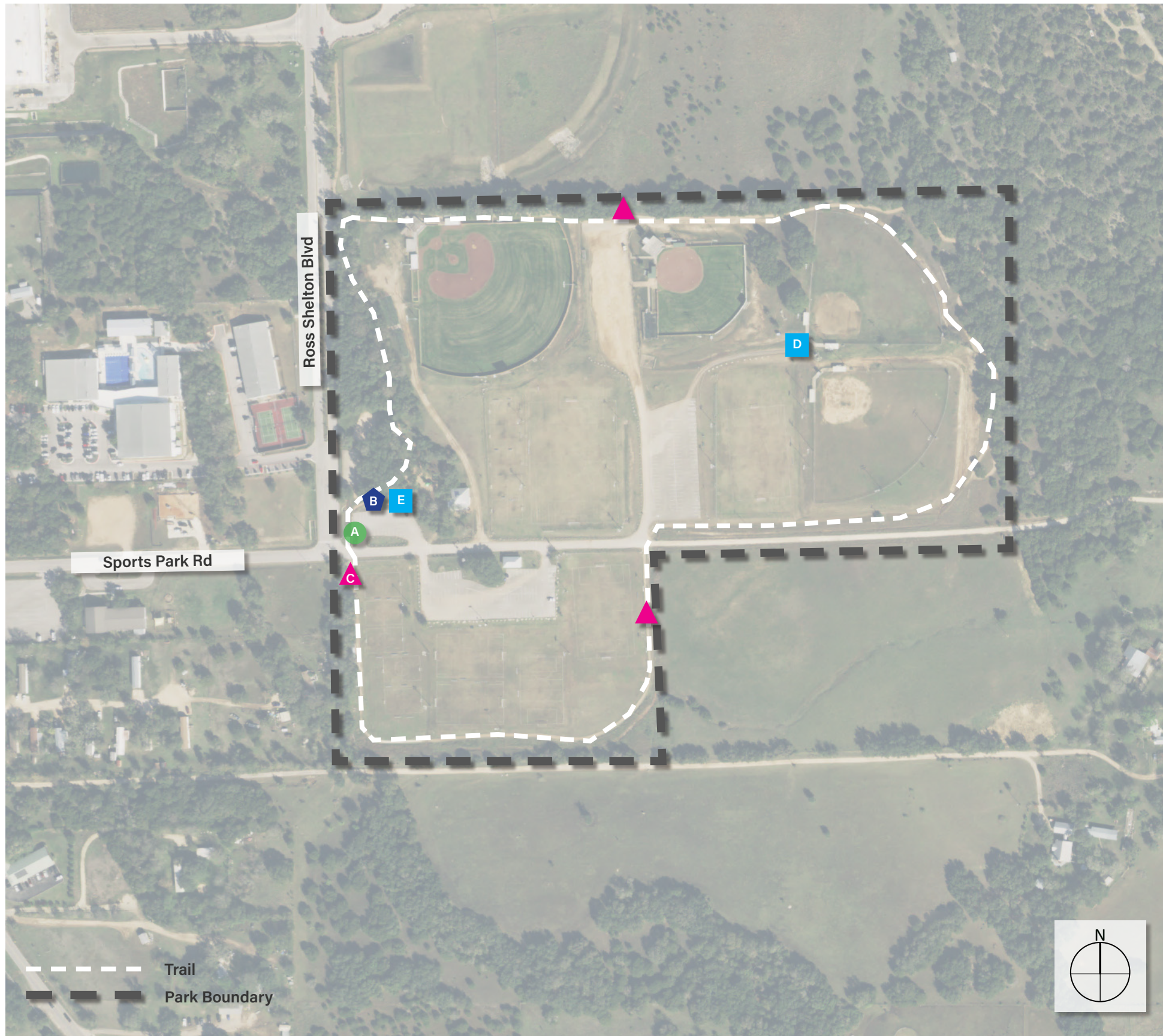
ENTRANCE MONUMENT SIGN (1)



TRAIL MARKER (1)

Dripping Springs Ranch Park - Existing Signage Inventory (Quantity)

Disclaimer:
 This document represents design progress and its provision, either electronic or hard copy, is to communicate design intent only. Original and published work may not be duplicated, used, or disclosed without the written consent of Studio16:19.



ENTRANCE MONUMENT SIGN (1)



INFO KIOSK (1)



TRAIL MARKERS (3)

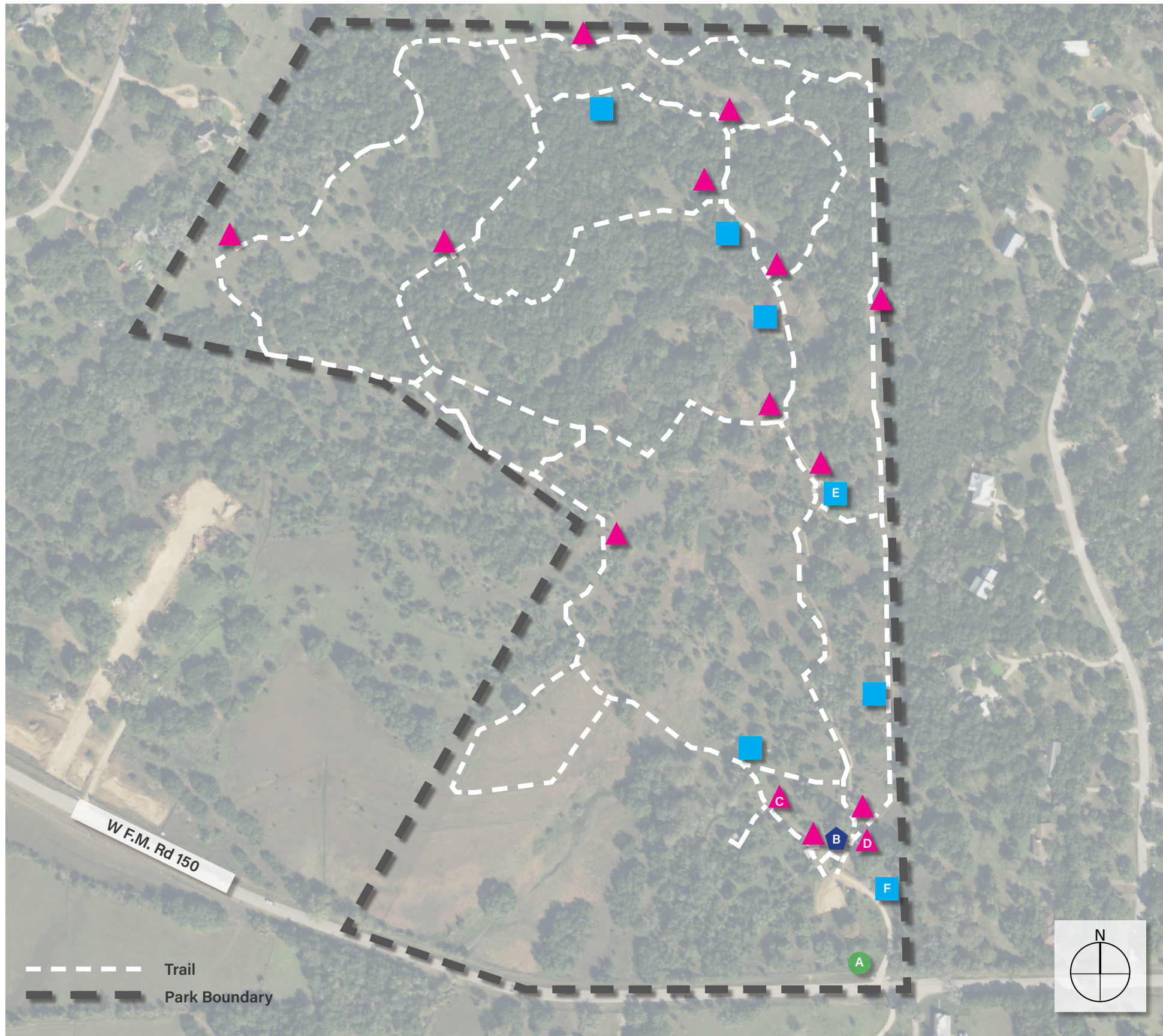


PARK RULES/INFO SIGN (2)



Sports & Recreation Park - Existing Signage Inventory (Quantity)

Disclaimer:
This document represents design progress and its provision, either electronic or hard copy, is to communicate design intent only. Original and published work may not be duplicated, used, or disclosed without the written consent of Studio16:19.



ENTRANCE MONUMENT SIGN (1)



INFO KIOSK (1)



TRAIL MARKERS (14)



PARK RULES/INFO SIGN (7)



Charro Ranch Park - Existing Signage Inventory (Quantity)

Disclaimer:
 This document represents design progress and its provision, either electronic or hard copy, is to communicate design intent only. Original and published work may not be duplicated, used, or disclosed without the written consent of Studio16:19.



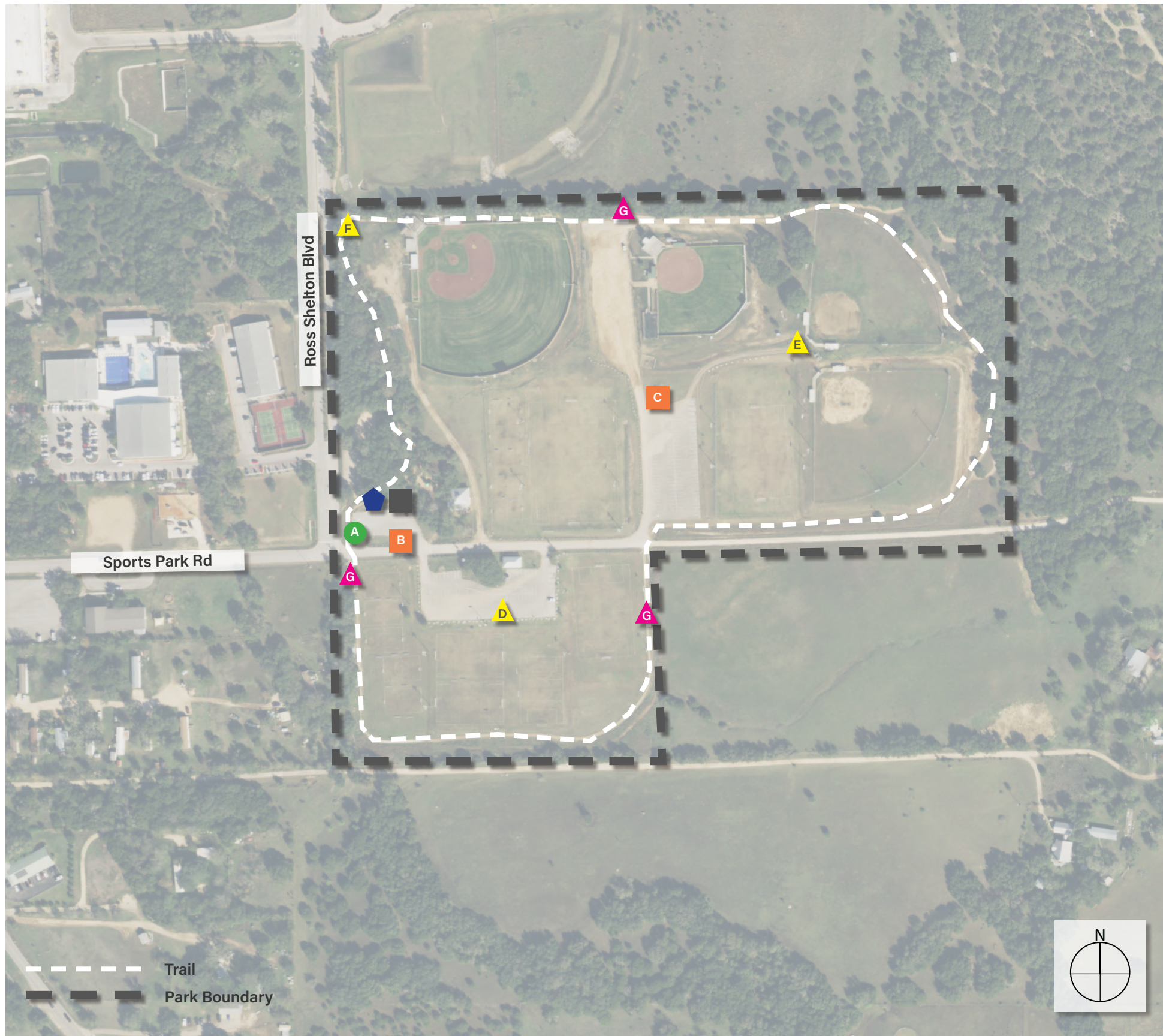
Proposed Small Vehicular Wayfinding Sign (1)

A. Directional Info
Ref. Dtl. 1.1/ Pg. 18

Existing Signs to Remain (2)

Dripping Springs Ranch Park - Proposed Signage Locations (Quantity)

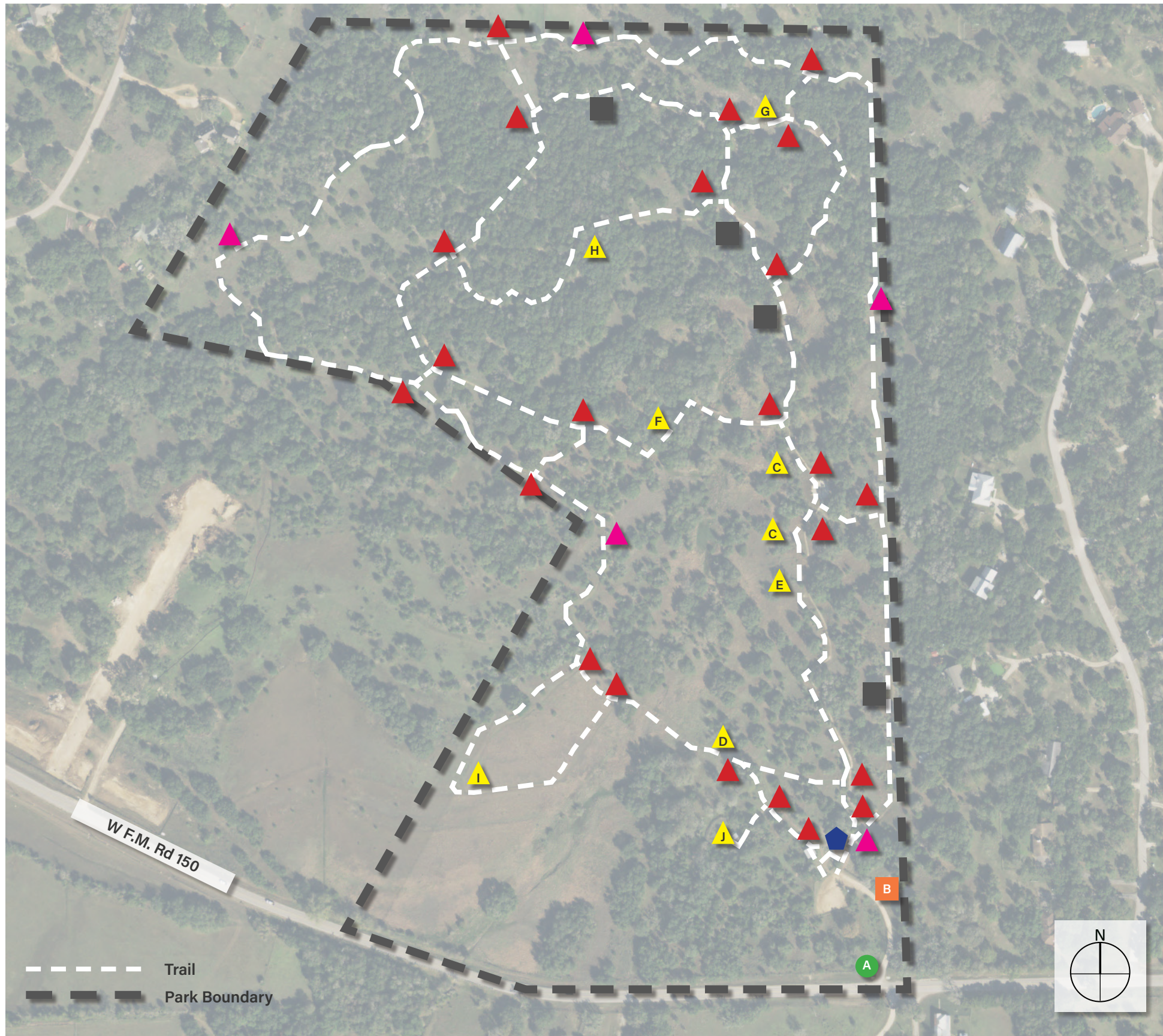
Disclaimer:
This document represents design progress and its provision, either electronic or hard copy, is to communicate design intent only. Original and published work may not be duplicated, used, or disclosed without the written consent of Studio16:19.



- **Replacement Vehicular Identification Sign (1)**
 - A. Primary Identification
Ref. Dtl. 1.1/ Pg. 19
- **Proposed Large Vehicular Wayfinding Sign (2)**
 - B. Playground
Basketball/Volleyball Courts
Soccer Fields #1-5
Soccer Fields #6-7
Baseball/Softball Fields
Ref. Dtl. 1.2/ Pg. 19
 - C. Baseball/Softball Fields
Adult Softball Fields #1-2
Ref. Dtl. 1.2/ Pg. 19
- **Proposed Pedestrian Info/Kiosk Sign (1)**
Ref. Dtl. 2.1/ Pg. 19
- ▲ **Proposed Pedestrian Directional Sign (3)**
 - D. Park Rules
Soccer Fields Wayfinding
Ref. Dtl. 2.2/ Pg. 19
 - E. Park Rules
Ref. Dtl. 2.2/ Pg. 19
 - F. BBQ Grills
Concession Stand
Baseball/Softball Fields
Ref. Dtl. 2.2/ Pg. 19
- ▲ **Proposed Small Pedestrian Trail Marker (3)**
 - G. Ref. Dtl. 2.3/ Pg. 19
- **Existing Sign to Remain (1)**

Disclaimer:
This document represents design progress and its provision, either electronic or hard copy, is to communicate design intent only. Original and published work may not be duplicated, used, or disclosed without the written consent of Studio16:19.

Sports & Recreation Park - Proposed Signage Locations (Quantity)

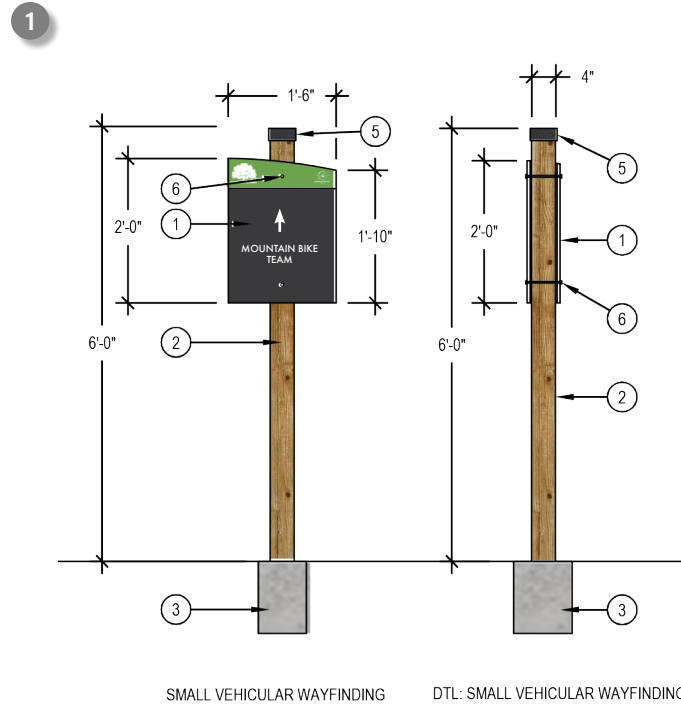
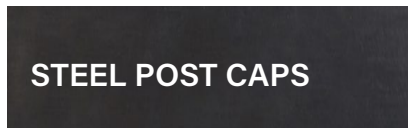
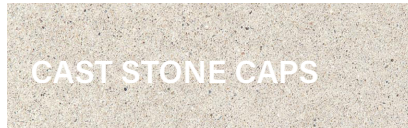


- **Replacement Vehicular Identification Sign (1)**
 A. Primary identification
 Ref. Dtl. 1.1/ Pg. 21
- **Proposed Large Vehicular Wayfinding Sign (1)**
 B. Park Rules
 Directional & Parking Info
 Ref. Dtl. 1.2/ Pg. 21
- ⬠ **Proposed Pedestrian Info/Kiosk Sign (1)**
 Ref. Dtl. 2.1/ Pg. 21
- ▲ **Proposed Pedestrian Directional Sign (2)**
 C. (Cross Country Trail) Chimney Swift Trail Sign
 Ref. Dtl. 2.2/ Pg. 21
- ▲ **Proposed Pedestrian Interpretive Sign (7)**
 D. (Cross Country Trail) Chimney Swift Trail Sign
 E. (Nature Trail) Grassland Interpretive Trail Sign
 F. (Nature Trail) Wetland Interpretive Trail Sign
 G. (Peace Trail) Peace Monument Trail Sign
 H. (Woodland Trail) Forest Interpretive Trail Sign
 I. (Prairie Trail) Prairie Interpretive Trail Sign
 J. (Bird Watching Trail) Bird Watching Trail Sign
 Ref. Dtl. 2.2/ Pg. 21
- ▲ **Proposed Large Pedestrian Trail Marker (23)**
 Ex. Nature Trail
 Cross Country Trail
 Ref. Dtl. 2.3/ Pg. 21
- ▲ **Proposed Small Pedestrian Trail Marker (5)**
 Ref. Dtl. 2.4/ Pg. 21
- **Existing Signs to Remain (4)**

Charro Ranch Park - Proposed Signage Locations (Quantity)

Disclaimer:
 This document represents design progress and its provision, either electronic or hard copy, is to communicate design intent only. Original and published work may not be duplicated, used, or disclosed without the written consent of Studio16:19.

MATERIALS



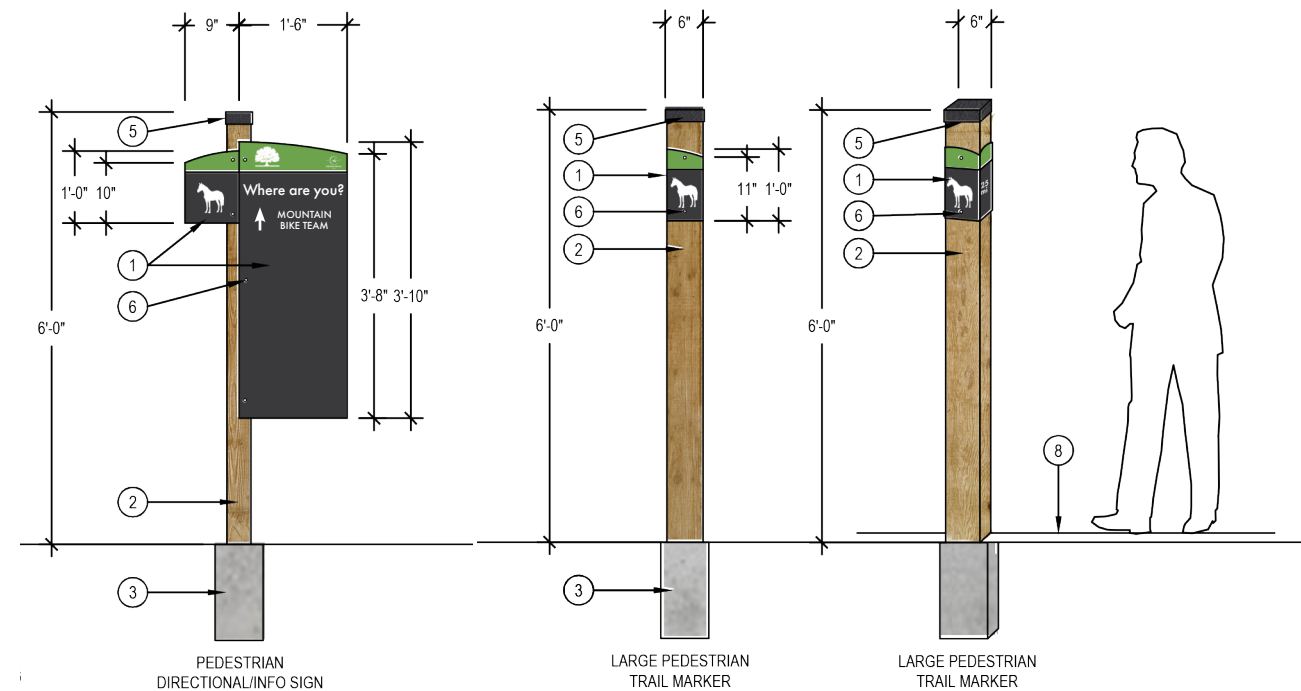
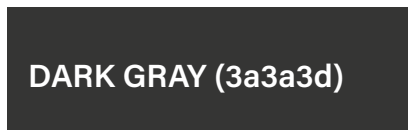
- ① 1/2" THICK IZONE IMAGING MESSAGE PANEL, PER MANUFACTURER'S SPECIFICATIONS
- ② 4"x4" INTEGRAL COLOR BOARDFORM CONCRETE POST, BUTTERFIELD COLOR U10 SONORAN TAN OR EQUIVALENT
- ③ CONCRETE FOOTER BY SIGN FABRICATOR STRUCTURAL DESIGN
- ⑤ STEEL POST CAP, POWDERCOAT DARK GRAY
- ⑥ SCREWS, TYP.

SMALL VEHICULAR WAYFINDING DTL: SMALL VEHICULAR WAYFINDING

1 VEHICULAR/ PEDESTRIAN IDENTIFICATION SIGNAGE

SCALE: 3/8" = 1'-0"

IZONE PANEL COLORS



- ① 1/2" THICK IZONE IMAGING MESSAGE PANEL, PER MANUFACTURER'S SPECIFICATIONS
- ② 4"x4" INTEGRAL COLOR BOARDFORM CONCRETE POST, BUTTERFIELD COLOR U10 SONORAN TAN OR EQUIVALENT
- ③ CONCRETE FOOTER BY SIGN FABRICATOR STRUCTURAL DESIGN
- ⑤ STEEL POST CAP, POWDERCOAT DARK GRAY
- ⑥ SCREWS, TYP.
- ⑧ FINISH GRADE, TYP.

PEDESTRIAN DIRECTIONAL/INFO SIGN LARGE PEDESTRIAN TRAIL MARKER LARGE PEDESTRIAN TRAIL MARKER

2 PEDESTRIAN IDENTIFICATION SIGNAGE

SCALE: 3/8" = 1'-0"

FONT:

Futura PT: Medium

ABCDEFGHIJKLMNOPQRSTUVWXYZ
abcdefghijklmnopqrstuvwxyz
1234567890

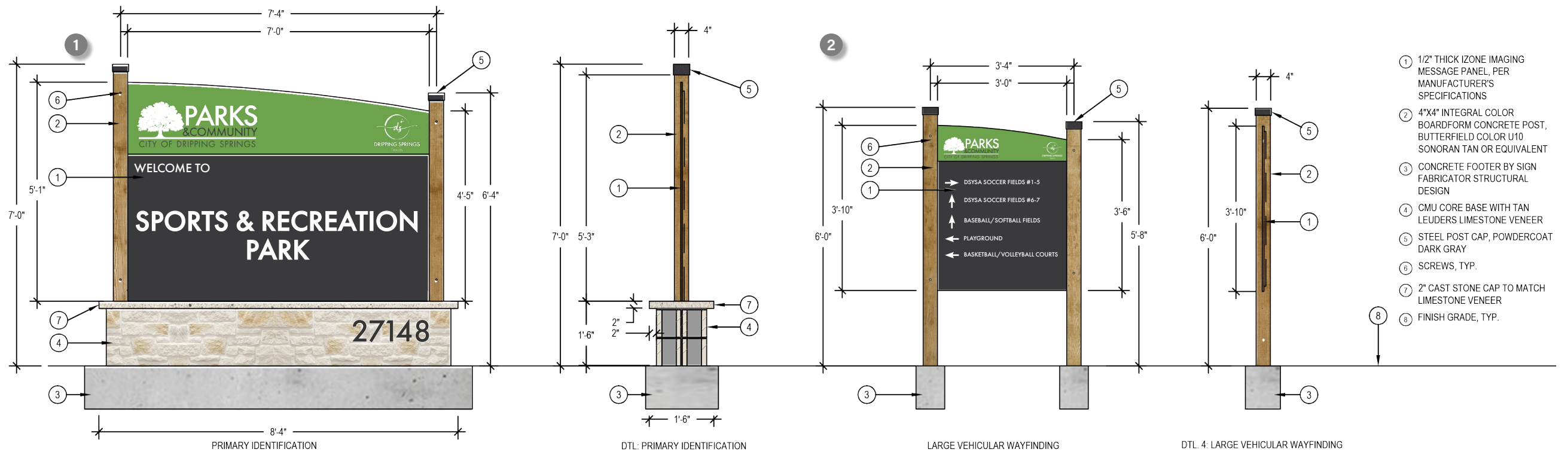
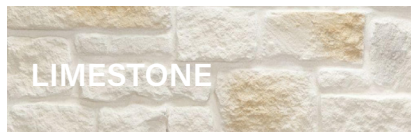
Note: Contractor to provide signed and sealed professional engineering documents for all sign foundations and footings, to be reviewed and approved by the City Engineer. Contractor to include all engineering related costs in statement of bid. Prior to sign installation, contractor shall field locate and stake sign locations for review and approval by the City Engineer.

Disclaimer:
This document represents design progress and its provision, either electronic or hard copy, is to communicate design intent only. Original and published work may not be duplicated, used, or disclosed without the written consent of Studio16:19.

Dripping Springs Ranch Park Signage



MATERIALS

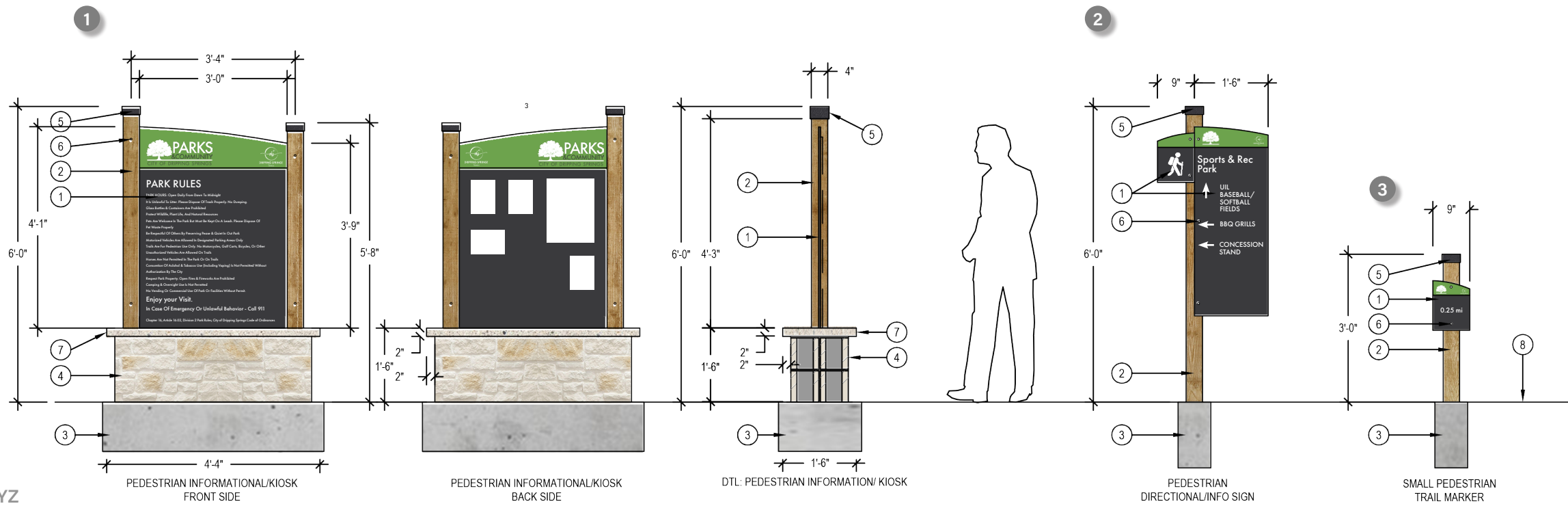
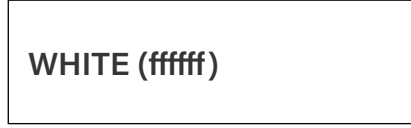
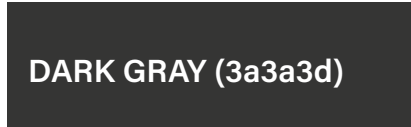
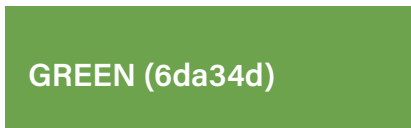


- ① 1/2" THICK IZONE IMAGING MESSAGE PANEL, PER MANUFACTURER'S SPECIFICATIONS
- ② 4"x4" INTEGRAL COLOR BOARDFORM CONCRETE POST, BUTTERFIELD COLOR U10 SONORAN TAN OR EQUIVALENT
- ③ CONCRETE FOOTER BY SIGN FABRICATOR STRUCTURAL DESIGN
- ④ CMU CORE BASE WITH TAN LEUDERS LIMESTONE VENEER
- ⑤ STEEL POST CAP, POWDERCOAT DARK GRAY
- ⑥ SCREWS, TYP.
- ⑦ 2" CAST STONE CAP TO MATCH LIMESTONE VENEER
- ⑧ FINISH GRADE, TYP.

1 VEHICULAR IDENTIFICATION SIGNAGE

SCALE: 3/8" = 1'-0"

IZONE PANEL COLORS



- ① 1/2" THICK IZONE IMAGING MESSAGE PANEL, PER MANUFACTURER'S SPECIFICATIONS
- ② 4"x4" INTEGRAL COLOR BOARDFORM CONCRETE POST, BUTTERFIELD COLOR U10 SONORAN TAN OR EQUIVALENT
- ③ CONCRETE FOOTER BY SIGN FABRICATOR STRUCTURAL DESIGN
- ④ CMU CORE BASE WITH TAN LEUDERS LIMESTONE VENEER
- ⑤ STEEL POST CAP, POWDERCOAT DARK GRAY
- ⑥ SCREWS, TYP.
- ⑦ 2" CAST STONE CAP TO MATCH LIMESTONE VENEER
- ⑧ FINISH GRADE, TYP.

2 PEDESTRIAN IDENTIFICATION SIGNAGE

SCALE: 3/8" = 1'-0"

FONT:

Futura PT: Medium

ABCDEFGHIJKLMNOPQRSTUVWXYZ
abcdefghijklmnopqrstuvwxyz
1234567890

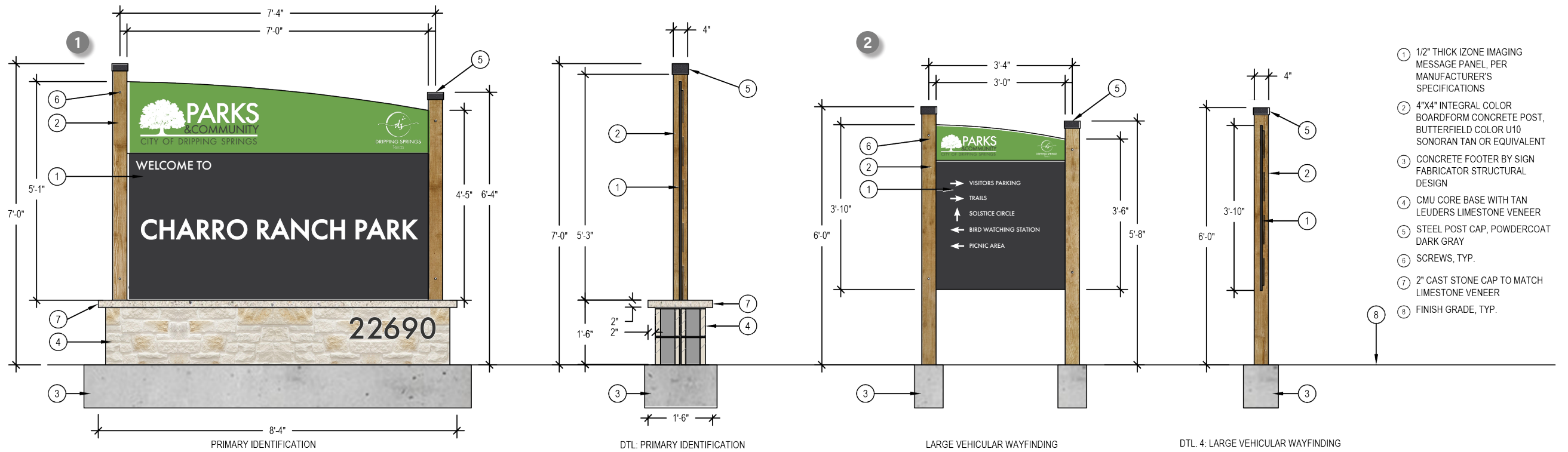
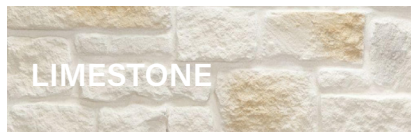
Note: Contractor to provide signed and sealed professional engineering documents for all sign foundations and footings, to be reviewed and approved by the City Engineer. Contractor to include all engineering related costs in statement of bid. Prior to sign installation, contractor shall field locate and stake sign locations for review and approval by the City Engineer.

Disclaimer: This document represents design progress and its provision, either electronic or hard copy, is to communicate design intent only. Original and published work may not be duplicated, used, or disclosed without the written consent of Studio16:19.

Sports and Recreation Park Signage



MATERIALS

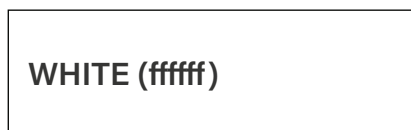
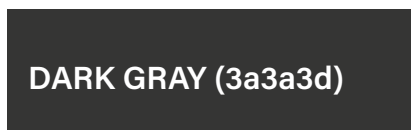
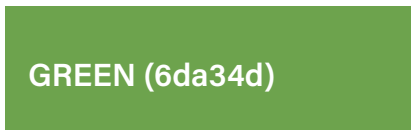


- ① 1/2" THICK IZONE IMAGING MESSAGE PANEL, PER MANUFACTURER'S SPECIFICATIONS
- ② 4"x4" INTEGRAL COLOR BOARDFORM CONCRETE POST, BUTTERFIELD COLOR U10 SONORAN TAN OR EQUIVALENT
- ③ CONCRETE FOOTER BY SIGN FABRICATOR STRUCTURAL DESIGN
- ④ CMU CORE BASE WITH TAN LEUDERS LIMESTONE VENEER
- ⑤ STEEL POST CAP, POWDERCOAT DARK GRAY
- ⑥ SCREWS, TYP.
- ⑦ 2" CAST STONE CAP TO MATCH LIMESTONE VENEER
- ⑧ FINISH GRADE, TYP.

1 VEHICULAR IDENTIFICATION SIGNAGE

SCALE: 3/8" = 1'-0"

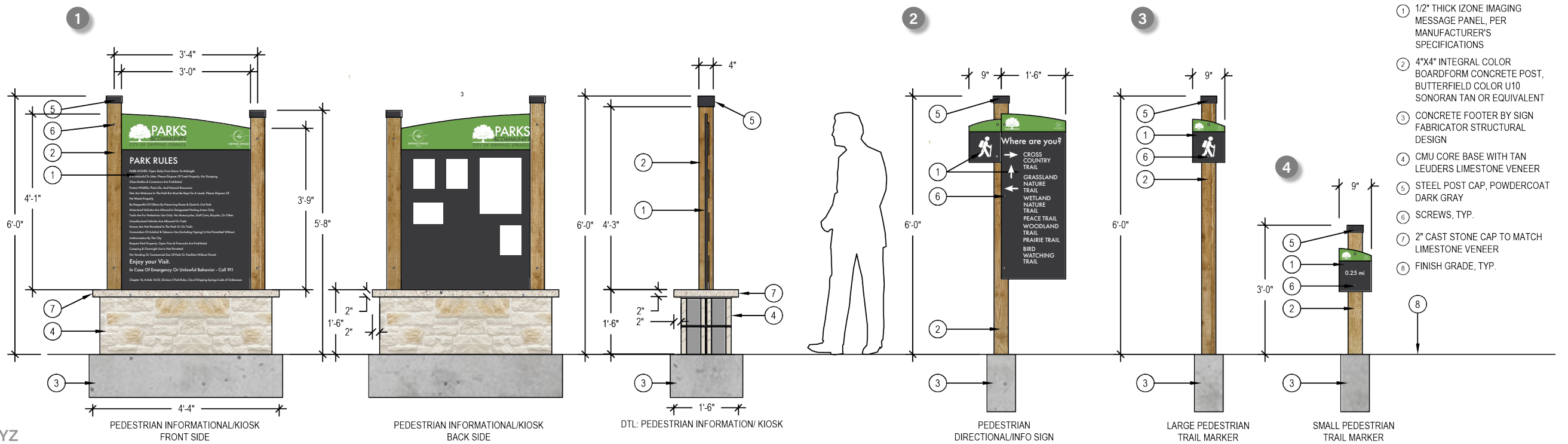
IZONE PANEL COLORS



FONT:

Futura PT: Medium

ABCDEFGHIJKLMNOPQRSTUVWXYZ
abcdefghijklmnopqrstuvwxyz
1234567890



- ① 1/2" THICK IZONE IMAGING MESSAGE PANEL, PER MANUFACTURER'S SPECIFICATIONS
- ② 4"x4" INTEGRAL COLOR BOARDFORM CONCRETE POST, BUTTERFIELD COLOR U10 SONORAN TAN OR EQUIVALENT
- ③ CONCRETE FOOTER BY SIGN FABRICATOR STRUCTURAL DESIGN
- ④ CMU CORE BASE WITH TAN LEUDERS LIMESTONE VENEER
- ⑤ STEEL POST CAP, POWDERCOAT DARK GRAY
- ⑥ SCREWS, TYP.
- ⑦ 2" CAST STONE CAP TO MATCH LIMESTONE VENEER
- ⑧ FINISH GRADE, TYP.

2 PEDESTRIAN IDENTIFICATION SIGNAGE

SCALE: 3/8" = 1'-0"

Charro Ranch Park

Note: Contractor to provide signed and sealed professional engineering documents for all sign foundations and footings, to be reviewed and approved by the City Engineer. Contractor to include all engineering related costs in statement of bid. Prior to sign installation, contractor shall field locate and stake sign locations for review and approval by the City Engineer.

Disclaimer: This document represents design progress and its provision, either electronic or hard copy, is to communicate design intent only. Original and published work may not be duplicated, used, or disclosed without the written consent of Studio16:19.



CHARRO RANCH
ENTRANCE MONUMENT SIGN



CHARRO RANCH
INFO KIOSK



CHARRO RANCH
INFO SIGNS



CHARRO RANCH
SOLSTICE CIRCLE INFO SIGN



CHARRO RANCH
CHIMNEY SWIFT INFO SIGN



CHARRO RANCH
BLACKJACK OAK INFO SIGN



CHARRO RANCH
POST OAK INFO SIGN



CHARRO RANCH
TX PERSIMMON INFO SIGN



CHARRO RANCH
W. CHINABERRY INFO SIGN



CHARRO RANCH
BIRD VIEW TRAIL SIGN



CHARRO RANCH
TRAIL SIGN



CHARRO RANCH
TRAIL SIGN



CHARRO RANCH
TRAIL SIGN



CHARRO RANCH
TRAIL SIGN



CHARRO RANCH
TRAIL SIGN

Appendix: Sign Inventory Photo Array for Reference

Disclaimer:
This document represents design progress and its provision, either electronic or hard copy, is to communicate design intent only. Original and published work may not be duplicated, used, or disclosed without the written consent of Studio16:19.



CHARRO RANCH TRAIL SIGN



CHARRO RANCH TRAIL SIGN



CHARRO RANCH MILE MARKER 0.00



CHARRO RANCH MILE MARKER 0.25



CHARRO RANCH MILE MARKER 0.50



CHARRO RANCH MILE MARKER 0.75



CHARRO RANCH MILE MARKER 1.00



SPORTS & REC. PARK ENTRANCE MONUMENT SIGN



SPORTS & REC. PARK INFO KIOSK



SPORTS & REC. PARK INFO SIGN



SPORTS & REC. PARK INFO MONUMENT (TO REMAIN)



SPORTS & REC. PARK MILE MARKER 0.00



SPORTS & REC. PARK MILE MARKER 0.25



SPORTS & REC. PARK MILE MARKER 0.25



VETERANS PARK ENTRANCE MONUMENT SIGN

Disclaimer: This document represents design progress and its provision, either electronic or hard copy, is to communicate design intent only. Original and published work may not be duplicated, used, or disclosed without the written consent of Studio16:19.

Appendix: Sign Inventory Photo Array for Reference



VETERANS PARK
INFO SIGN (TO REMAIN)



VETERANS PARK
INFO SIGN (TO REMAIN)



VETERANS PARK
INFO SIGN (TO REMAIN)



FOUNDERS PARK ENTRANCE
MONUMENT SIGN (TO REMAIN)



FOUNDERS PARK
INFO KIOSK



FOUNDERS PARK
INFO SIGN



FOUNDERS PARK
INFO MONUMENT (TO REMAIN)



FOUNDERS PARK
INFO MONUMENT (TO REMAIN)



RANCH PARK ENTRANCE
MONUMENT SIGN (TO REMAIN)



RANCH PARK
TRAIL SIGN

Appendix: Sign Inventory Photo Array for Reference

Disclaimer:
This document represents design progress and its provision, either electronic or hard copy, is to communicate design intent only. Original and published work may not be duplicated, used, or disclosed without the written consent of Studio16:19.