

BUILDING

# STEPHENSON SCHOOL BUILDING

CONCEPTUAL SCHEME

NEIGHBORING  
BUILDING

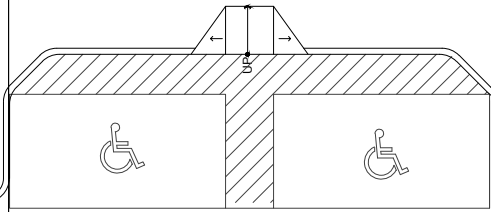
STEPHENSON SCHOOL  
BUILDING

ADDITION

APPROX. LIMITS OF SITE WORK

PROPERTY LINE

MASONIC LODGE  
(ACADEMY BUILDING)



PHASE 1 BUILDING AND ADDITION      OPTIONAL ALTERNATE ADDITION

INTEGRATED WITH TIRZ  
STEPHENSON DOWNTOWN  
PARKING CONCEPT PLAN

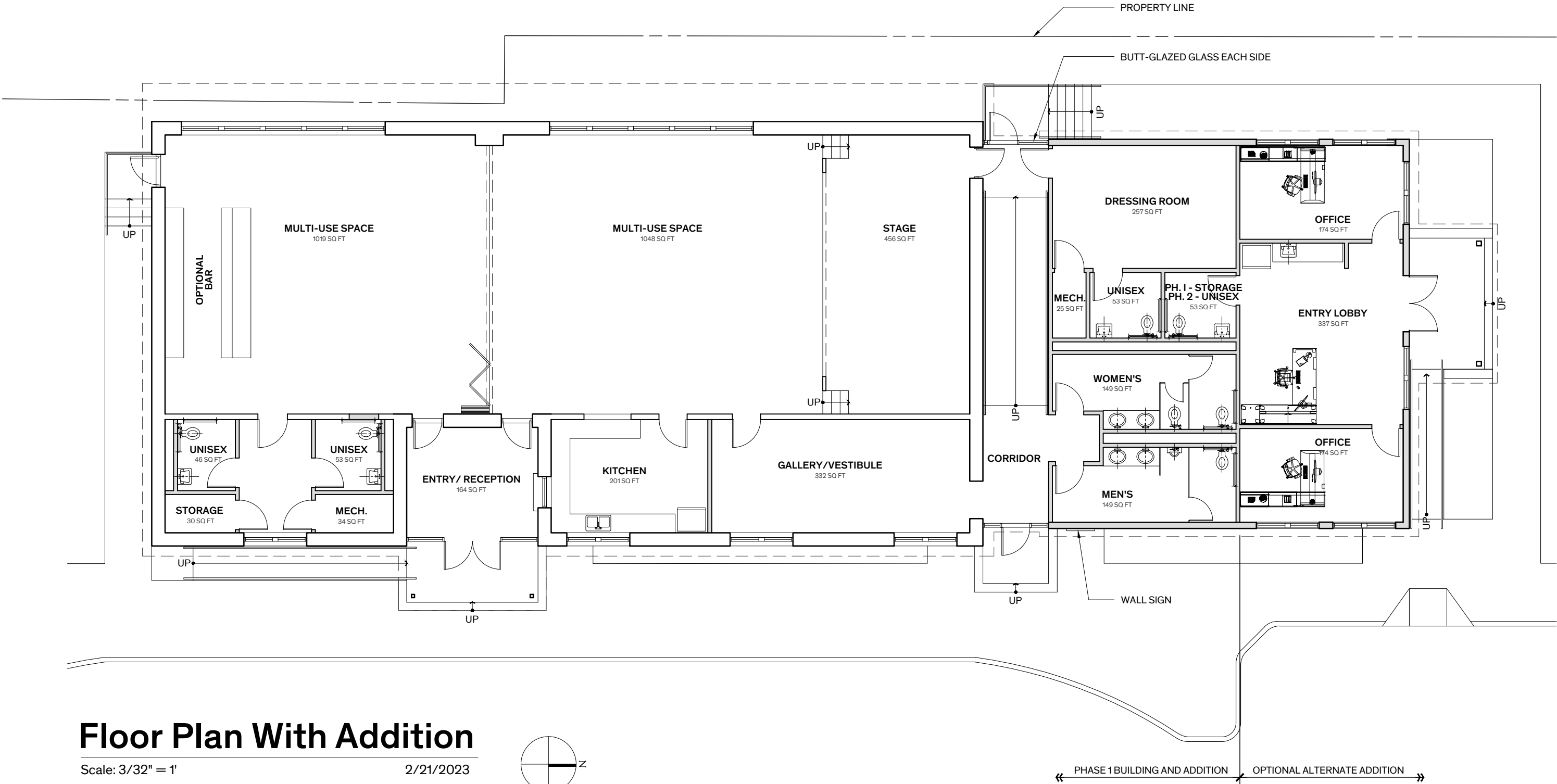
## Proposed Site Plan

Scale: 1/16" = 1'-0"

2/21/2023

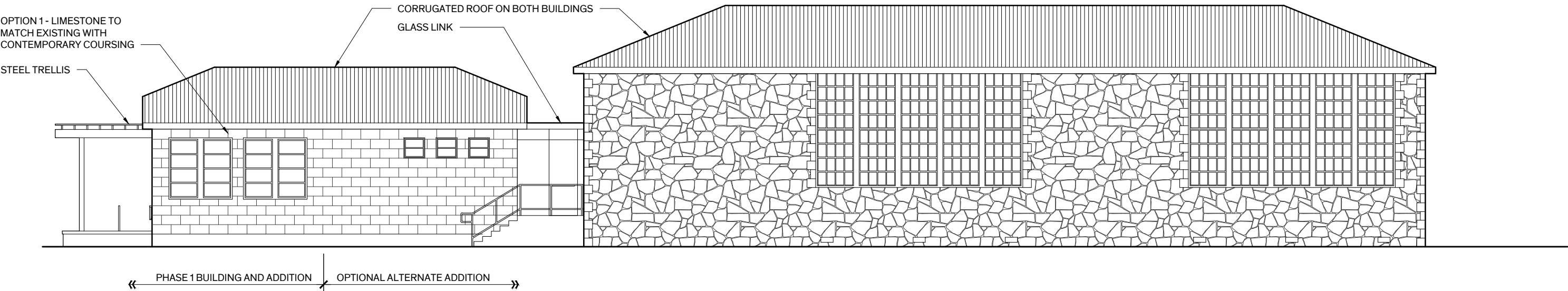


STEPHENSON SCHOOL BUILDING  
CONCEPTUAL SCHEME



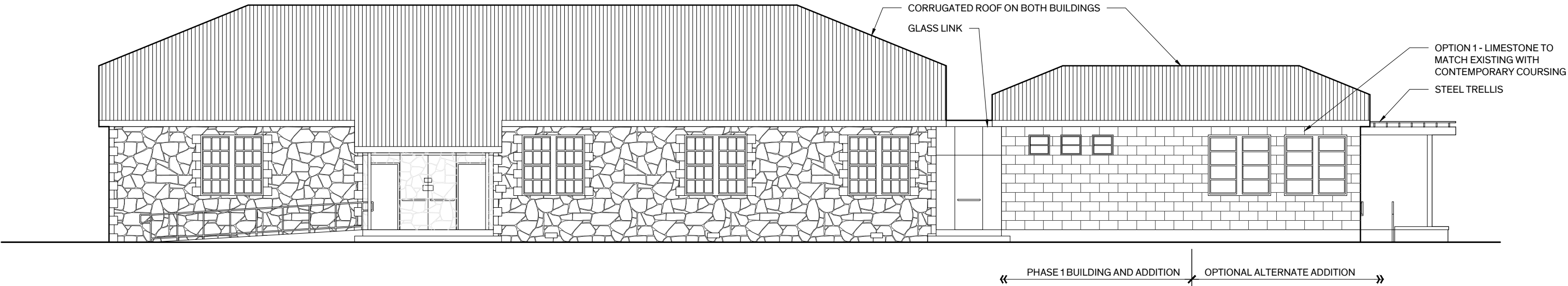
Floor Plan With Addition

STEPHENSON SCHOOL BUILDING  
CONCEPTUAL SCHEME - OPTION 1



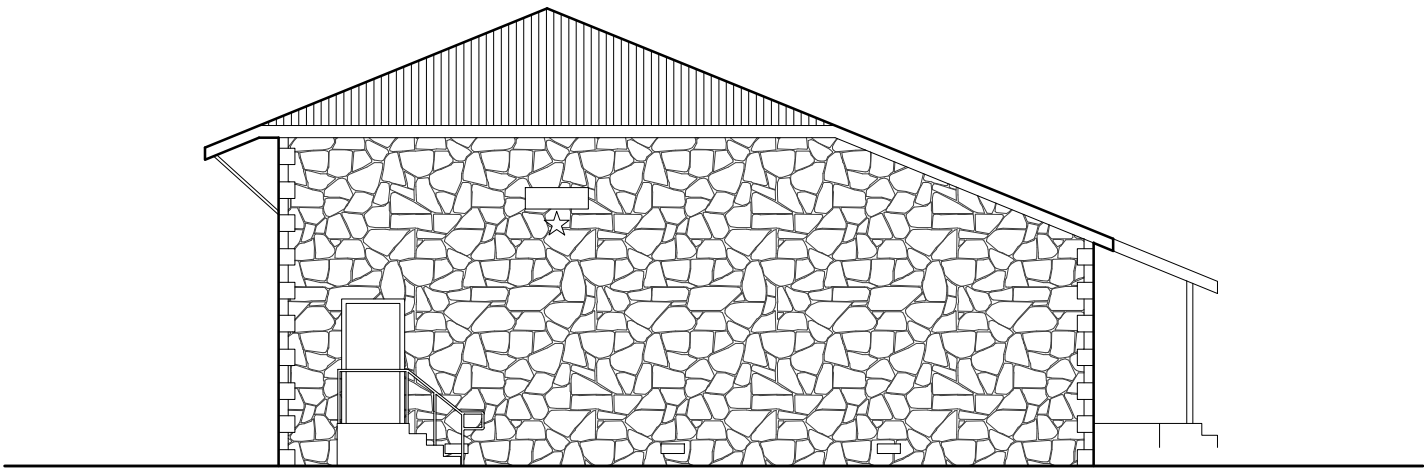
Option 1 - West Elevation

Scale: 3/32" = 1' 2/21/2023



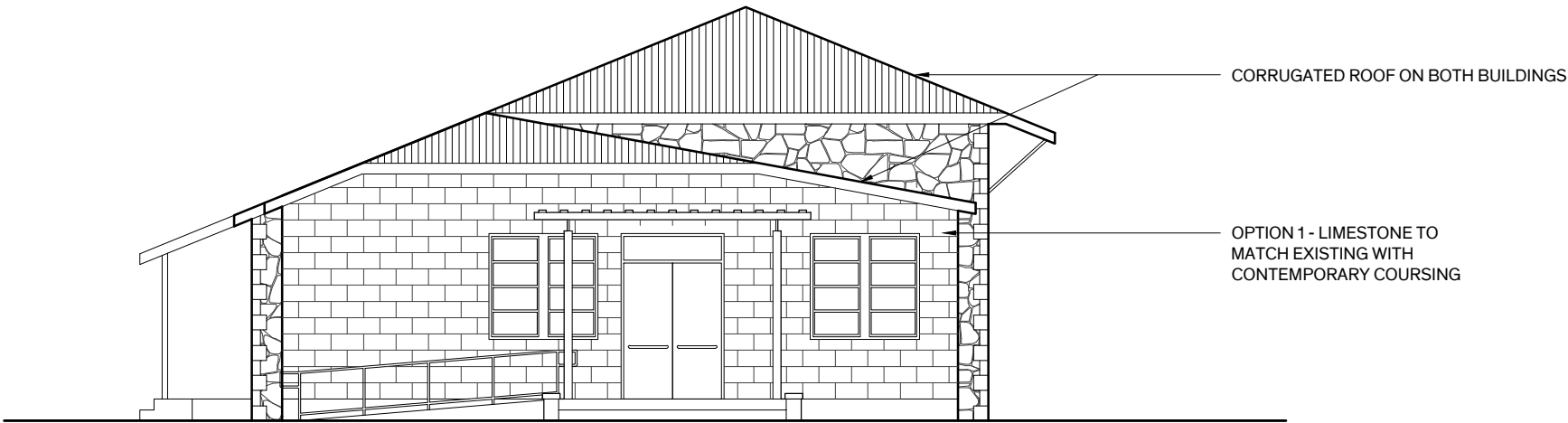
Option 1 - East Elevation

Scale: 3/32" = 1' 2/21/2023



# Option 1 - South Elevation

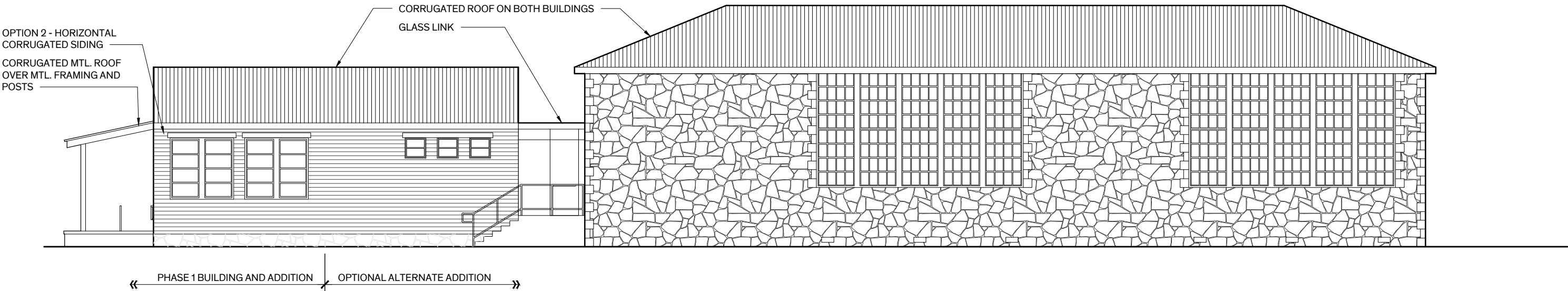
Scale: 3/32" = 1' 2/21/2023



# Option 1 - North Elevation

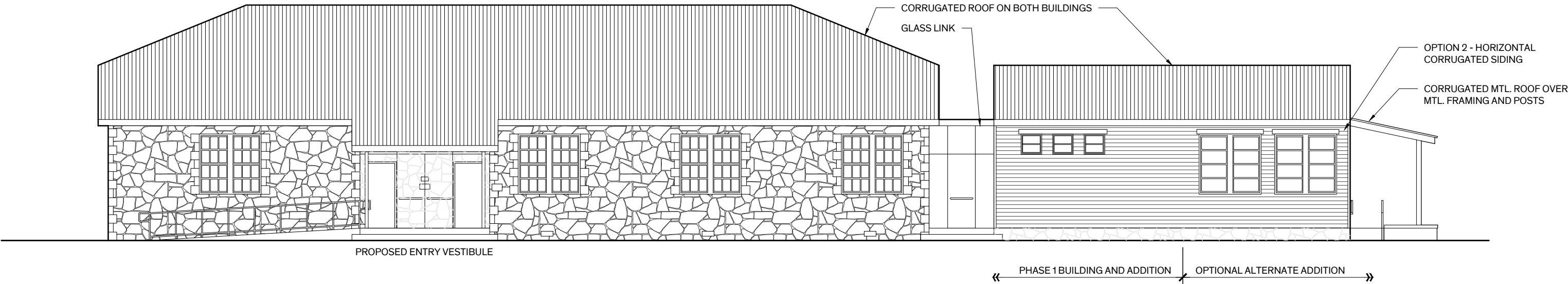
Scale: 3/32" = 1' 2/21/2023

STEPHENSON SCHOOL BUILDING  
CONCEPTUAL SCHEME - OPTION 2



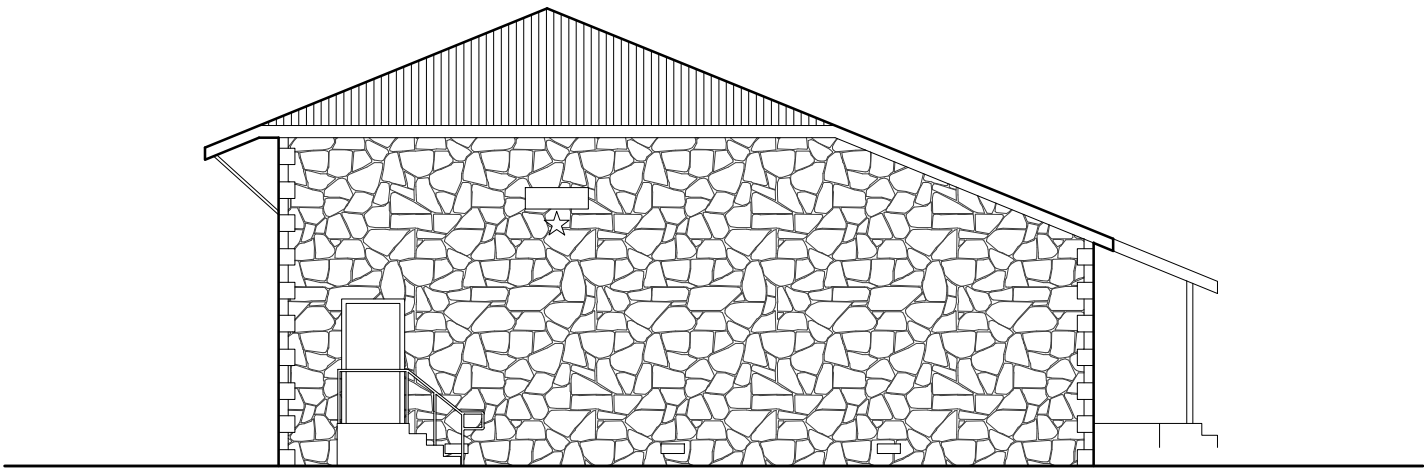
Option 2 - West Elevation

Scale: 3/32" = 1' 2/21/2023



Option 2 - East Elevation

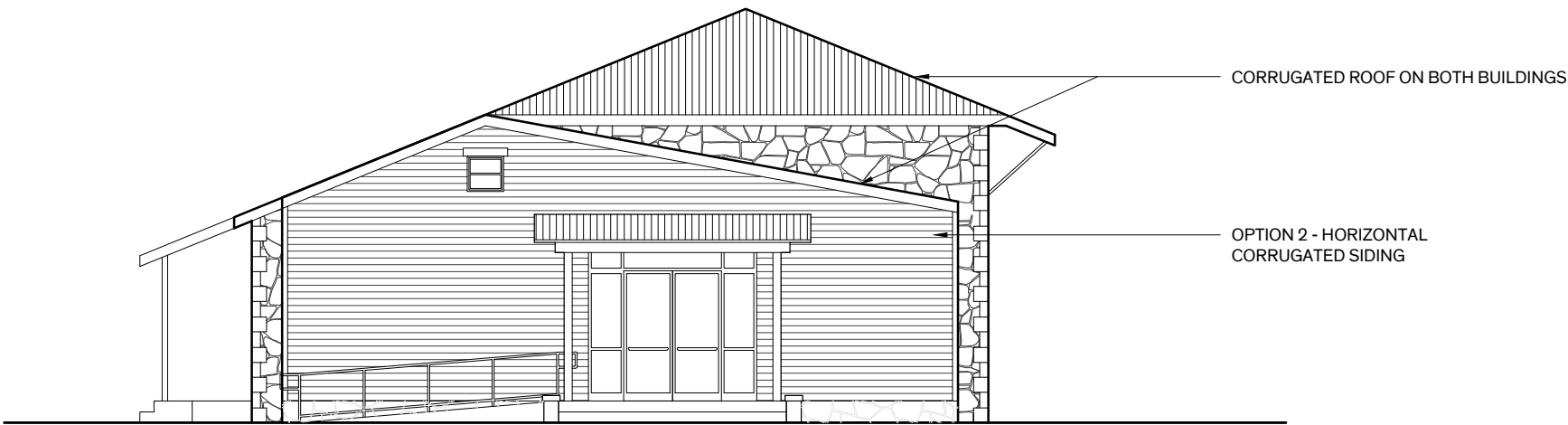
Scale: 3/32" = 1' 2/21/2023



# Option 2 - South Elevation

Scale: 3/32" = 1'

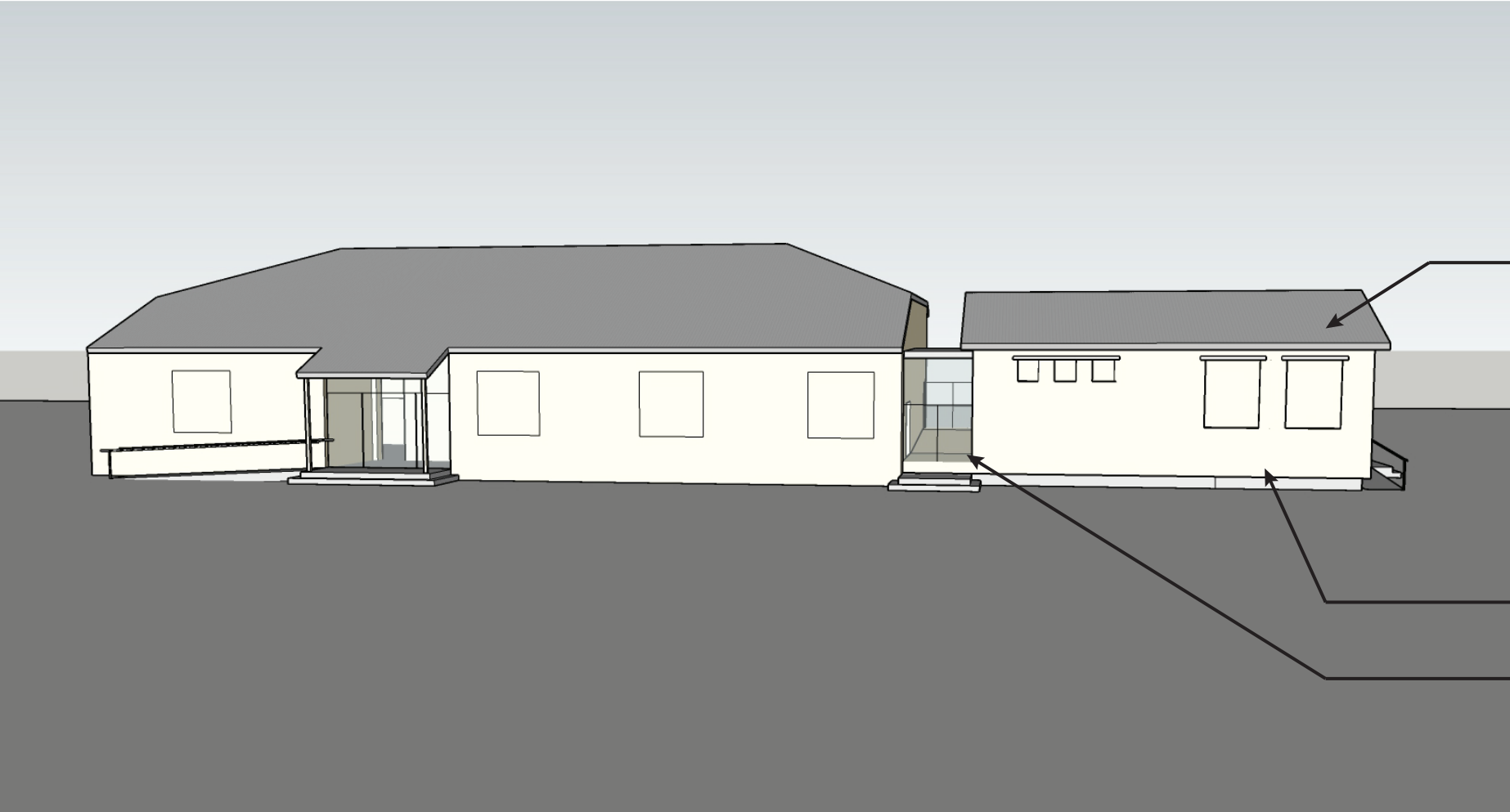
2/21/2023



# Option 2 - North Elevation

Scale: 3/32" = 1'

2/21/2023



CORRUGATED ROOF ON BOTH BUILDINGS

LIMESTONE TO MATCH EXISTING WITH CONTEMPORARY COURSING

GLASS LINK

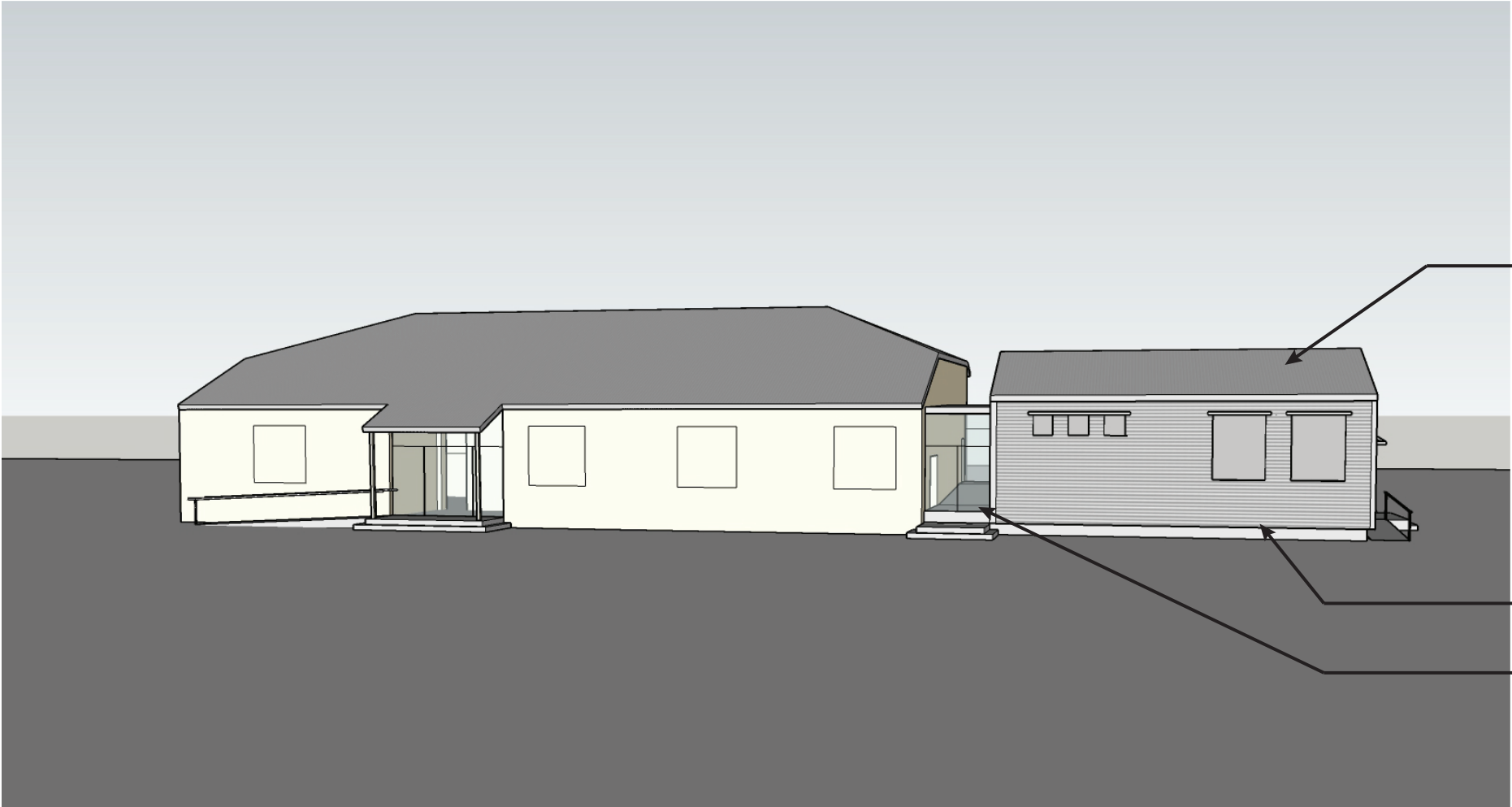


CORRUGATED ROOF ON BOTH BUILDINGS

LIMESTONE TO MATCH EXISTING WITH CONTEMPORARY COURSING

ENTRY FACADE FOR OPTIONAL ALTERNATE ADDITION

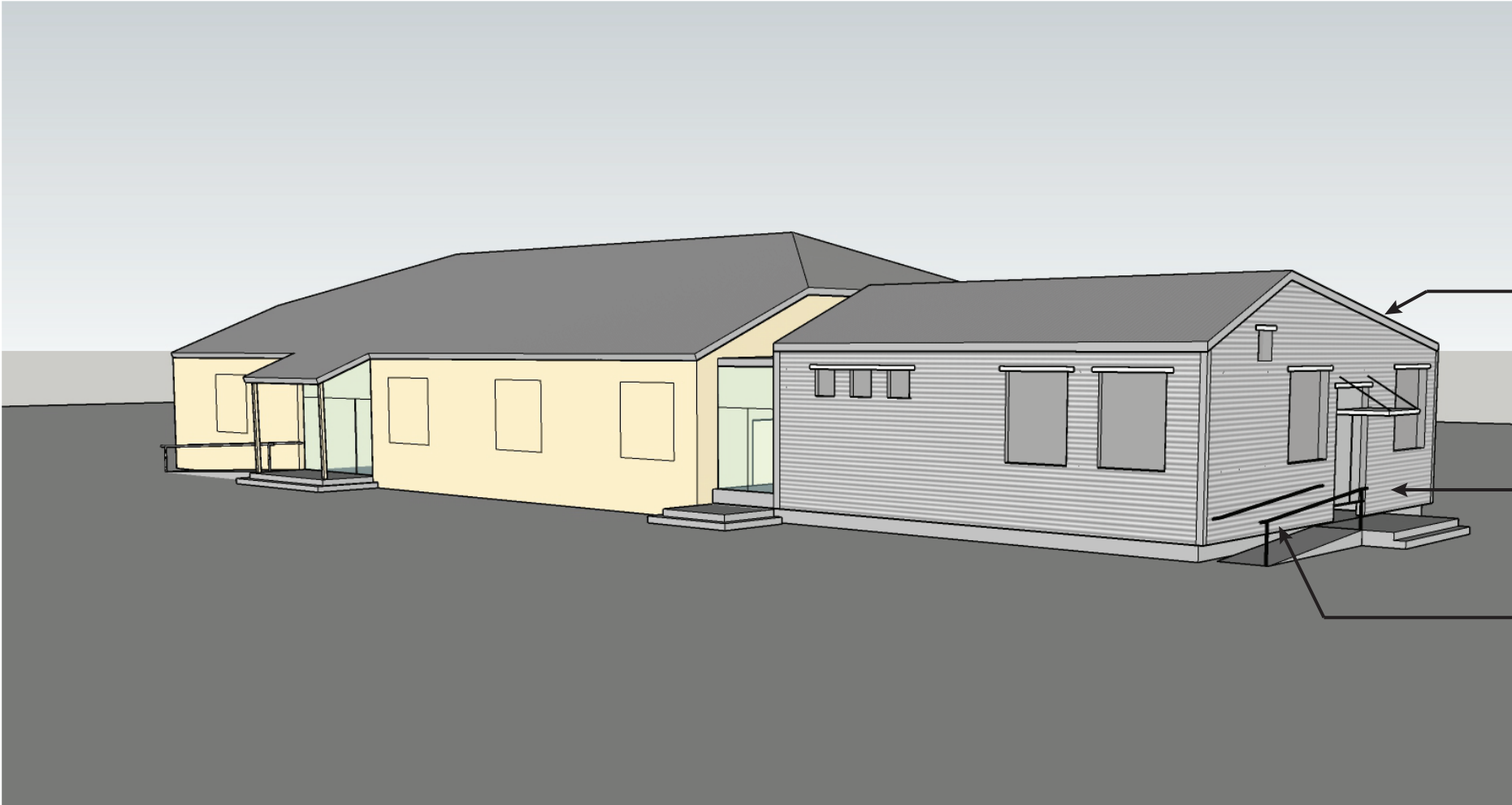
STEPHENSON SCHOOL BUILDING  
AND ADDITION  
OPTION 1 -LIMESTONE FACADE



CORRUGATED ROOF ON BOTH BUILDINGS

HORIZONTAL CORRUGATED SIDING

GLASS LINK



CORRUGATED ROOF ON BOTH BUILDINGS

HORIZONTAL CORRUGATED SIDING

ENTRY FACADE FOR OPTIONAL ALTERNATE ADDITION

STEPHENSON SCHOOL BUILDING  
AND ADDITION  
OPTION 2 - METAL SIDING FACADE



© 2010 Pam Penick

