



MEMORANDUM

REGULAR CITY COUNCIL MEETING

January 16, 2024, at 7:00 PM

TO: City Council

FROM: Lisa Nocerini, City Manager

SUBJECT: Leaf and Brush Policy –Resolution 03-2024

The City of Douglas has in place, a leaf and brush policy that is intended to provide a disposal source for leaves and brush specifically. The policy outlines the schedule and guidelines for those residents in the City of Douglas who live on publicly maintained roads and will be mailed to each household. Please see the attached resolution and Schedule & Guideline Policy.

Private road maintenance is not a proper use of Public Act 51 funding, therefore, the City of Douglas will not pick up leaves and brush from private roads. A letter will be sent to property owners located on private roads, along with a map that shows the roads that are considered publicly certified roads under the public act, and ensuring they are aware that they must make alternative arrangements for their leaf and brush collection.

The City Attorney's office has reviewed and provided guidance on both the leaf and brush pickup guidelines and the proper use of Public Act 51 funds.

Sample Motion: The City Council approves Resolution 03-2024 providing the leaf and brush policy for the residents of Douglas.

**CITY OF THE VILLAGE OF DOUGLAS
COUNTY OF ALLEGAN
STATE OF MICHIGAN**

RESOLUTION NO. 03-2024

A RESOLUTION ADOPTING THE LEAF AND BRUSH POLICY

At a regular meeting of the City Council for the City of the Village of Douglas, Michigan, held at the City of the Village of Douglas City Hall, Douglas, Michigan, on the 16th day of January, 2024, at 7:00 p.m. with

PRESENT:

ABSENT:

The following Resolution was offered by Councilperson _____ and supported by Councilperson _____.

RESOLUTION

WHEREAS, the City of Douglas has a leaf and brush policy intended to provide a disposal source for leaf and brush, and

WHEREAS, residents are informed on what is acceptable and what is not acceptable; and

WHEREAS, residents are informed on the scheduled pick up days; and

NOW, THEREFORE, BE IT RESOLVED AS FOLLOWS: that the City of Douglas City Council hereby adopts the Leaf and Brush Policy as a guideline for disposal of leaf and brush for the residents of the City of Douglas.

YEAS: Council Members:

NAYS: Council Members:

ABSTAIN: Council Members:

ABSENT: Council Members:

ADOPTED this 16th day of January, 2024

CITY OF THE VILLAGE OF DOUGLAS

BY: _____ DATE: _____
Cathy North, Mayor

BY: _____ DATE: _____
Laura Kasper, City Clerk

CERTIFICATION

I, Laura Kasper, the duly appointed Clerk of the City of the Village of Douglas, do hereby certify that the foregoing is a true and complete copy of a Resolution adopted by the Douglas City Council at a regular meeting held on Monday, January 16, 2024 in compliance with the Open Meetings Act, Act No. 267 of the Public Acts of Michigan, 1976, as amended, the minutes of the meeting were kept and will be or have been made available as required by said Act.

CITY OF THE VILLAGE OF DOUGLAS

BY: _____
Laura Kasper, City Clerk



2024 Leaf and Brush Pickup Schedule and Guidelines CITY OF THE VILLAGE OF DOUGLAS



The leaf and brush program for the City of Douglas is intended to provide a disposal source for leaf and brush. The City will pick up leaves and brush from all public City streets according to the schedule. Private road maintenance is not a proper use of Act 51 funds; therefore, the City will not pick up leaves and brush from private roads.

How are leaves and brush accepted in the leaf and brush program?

- ✓ Leaves must be unbagged (paper yard waste bags accepted).
- ✓ Leaves and brush must be separated and placed behind the curb or road edge of the paved portion of the roadway; however, it must be reachable with the leaf truck or grapple claw.
- ✓ Leaves and brush can be placed out up to, but not earlier than, three (3) days before a scheduled pick up. Leaves and brush placed out after 7:00am on the schedule day will not be picked up.
- ✓ Brush stacked neatly in the same direction parallel to the road.
- ✓ Leaves and brush piles that do not exceed 8 feet in length, 6 feet in width, and 4 feet in height. If pile exceeds the required size, please separate them into multiple piles.
- ✓ Branches that are no larger than 6 feet long and 6 inches in diameter.

What is unacceptable in the leaf and brush program?

- ✗ Leaves or brush piles that are stacked in the road or alleyway, on the sidewalk, near a storm drain, fence, landscaping, or parked vehicle.
- ✗ Except as permitted by the City's leaf and brush pick up program, it shall be unlawful for any person to throw or deposit any refuse upon or into any street, right-of-way, alley, or waterway (Ordinance 54.05, Unauthorized Dumping and Littering).
- ✗ Brush piles that are stacked perpendicular to the roadside.
- ✗ Leaf or brush piles that exceed the size requirement.
- ✗ Leaves and brush piles that are left from contracted work or commercial landscapers.
- ✗ Material from lot clearing operations, tree removal (including stumps), large landscape projects, landscape timer, railroad ties, pet waste, bricks, lumber, fence debris, construction material, grass clippings, yard waste, or garden waste.

If piles are not in compliance with the City of Douglas' leaf and brush program, a door hanger may be placed indicating what was found and corrective action by the Code Enforcement Officer or Department of Public Works crew. You are urged to compost grass clippings or mow clippings into your lawn. No person shall start or maintain any fire intended to dispose of leaves, brush, or other natural refuse (Ordinance 90.12, Prohibited Fires).

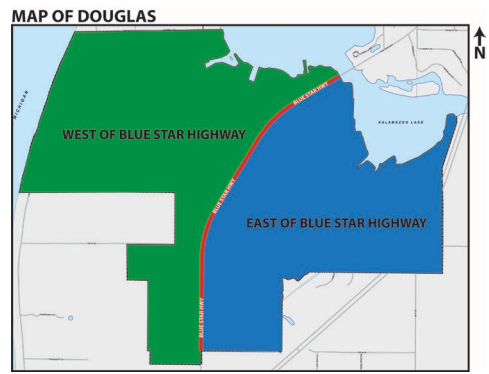
Is there a weekly leaf and brush pick up option with trash collection?

The City is currently contracting with Republic Services of Jenison for refuse and recycling collection and disposal services. As part of the agreement, Republic offers a 96-gallon container plus 3 biodegradable paper bags as a seasonal option (April 1-November 30) with the weekly refuse pick up. Please call 877-698-7274 for further information and cost.

What about my live cut Christmas Tree?

The Department of Public Works does not pick up Christmas Trees curbside but does offer an alternative. During the month of January Douglas residents may drop off their live cut Christmas Tree at Schultz Park across from the dog park. Please remove all lights, ornaments, decorations, and the tree stand.





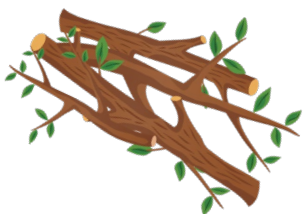
When is the scheduled pick up?

WEST OF BLUE STAR HIGHWAY	
PLACED AT THE CURB BY 7:00 AM TUESDAY MORNING THE WEEK OF	
April 9 & 23	Leaves and Brush
May 14 & 28	Leaves and Brush
May 28 will be our <u>final</u> spring sweep of the entire City for leaves	
June 11 & 25	Brush Only
July 9 & 23	Brush Only
August 13 & 27	Brush Only
September 10 & 24	Brush Only
September 30 will be our <u>final</u> summer sweep of the entire City for brush	
October 8 & 22	Leaves Only
November 12 & 26	Leaves Only
December 3 will be our <u>final</u> fall sweep of the entire City for leaves	

EAST OF BLUE STAR HIGHWAY	
PLACED AT THE CURB BY 7:00 AM TUESDAY MORNING THE WEEK OF	
April 2 & 16	Leaves and Brush
May 7 & 21	Leaves and Brush
May 28 will be our <u>final</u> spring sweep of the entire City for leaves	
June 4 & 18	Brush Only
July 2 & 16	Brush Only
August 6 & 20	Brush Only
September 3 & 17	Brush Only
September 30 will be our <u>final</u> summer sweep of the entire City for brush	
October 1 & 15	Leaves Only
November 5 & 19	Leaves Only
December 3 will be our <u>final</u> fall sweep of the entire City for leaves	

Due to the large workload associated with fall leaf pickup, City crews may not reach your property on the exact date of your scheduled pickup due to the large volume of leaf drop, however, please be sure to place your leaves out before your scheduled pickup date to ensure your leaves are removed. Leaves placed out after your scheduled pickup date and after City crews have serviced your street may not be collected and will become the responsibility of the property owner to dispose of. Should large windstorms or ice events occur, additional brush pickup may follow the event.

Reminder - Leaves and brush piles that are left from contracted work or commercial landscapers will not be picked up – thank you.



Spring Clean Up Collection Days – June 3-6, 2024
visit www.douglasmi.gov for more details

