

FIRST FLOOR
Scale: 1 inch = 4 Ft.

Lighting Control Equipment

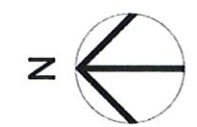
Description	Quantity	Rough In	Voltage	Control Wire	Load Type	# of Loads	Manufacturer	Finish
ST IP710-LFZ	7	1G	120/277	Stand Alone	0-10V	1	Steinel	TBD
SWD-804-2P-XX	1	1G	Low Voltage	#18 AWG	0-10V		Sensorworx	White
SWD-804-XX	5	1G	Low Voltage	#18 AWG	0-10V		Sensorworx	White
SWD-900-D1	4	J-Box	120/277	#18 AWG	0-10V		Sensorworx	White
SWX-121-XX-HE	2	1G	120/277	Stand Alone	Switched Only		Sensorworx	TBD
SWX-121-XX	9	1G	120/277	Stand Alone	Switched Only		Sensorworx	TBD
SWX-203-1	8	Surface	Low Voltage	#18 AWG	NA		Sensorworx	White
SWX-221-1	9	Spring Clip	Low Voltage	#18 AWG	NA		Sensorworx	White
SWX-222-1	3	Spring Clip	Low Voltage	#18 AWG	NA		Sensorworx	White
SWX-801-XX	3	1G	Low Voltage	#18 AWG	Switched Only		Sensorworx	White
SWX-803-XX	9	1G	Low Voltage	#18 AWG	0-10V		Sensorworx	White
SWX-900	4	J-Box	Low Voltage	#18 AWG	Switched Only		Sensorworx	White
SWX-900-AX	17	J-Box	Low Voltage	#18 AWG	NA		Sensorworx	White

1. THIS LIGHTING DESIGN IS BASED ON INFORMATION SUPPLIED BY OTHERS TO ONLY AS A VISUALIZATION AID. FIELD DEVIATIONS MAY SIGNIFICANTLY AFFECT PREDICTED PERFORMANCE. PRIOR TO INSTALLATION, CRITICAL SITE INFORMATION, POLE LOCATIONS, ORIENTATION, MOUNTING HEIGHT, ETC. SHOULD BE COORDINATED WITH THE CONTRACTOR AND/OR SPECIFIER RESPONSIBLE FOR THE PROJECT.

2. LUMINAIRE DATA IS TESTED TO INDUSTRY STANDARDS UNDER LABORATORY CONDITIONS. OPERATING VOLTAGE AND NORMAL MANUFACTURING TOLERANCES OF LAMP, BALLAST, AND LUMINAIRE MAY AFFECT FIELD RESULTS.

3. CONFORMANCE TO FACILITY CODE AND OTHER LOCAL REQUIREMENTS IS THE RESPONSIBILITY OF THE OWNER AND/OR THE OWNER'S REPRESENTATIVE. SITE DETAILS PROVIDED HEREON ARE REPRODUCED THIS LAYOUT MAY NOT MEET TITLE 24 OR LOCAL ENERGY REQUIREMENTS. IF THIS LAYOUT NEEDS TO BE TITLE 24 COMPLIANT OR MEET OTHER ENERGY REQUIREMENTS, PLEASE CONSULT FACTORY WITH SPECIFIC DETAILS REGARDING PROJECT REQUIREMENTS SO THAT REVISIONS MAY BE MADE TO THE DRAWING.

THIS LIGHTING PATTERN REPRESENTS ILLUMINATION LEVELS CALCULATED FROM LABORATORY DATA TAKEN UNDER CONTROLLED CONDITIONS IN ACCORDANCE WITH ILLUMINATING ENGINEERING SOCIETY APPROVED METHODS. ACTUAL PERFORMANCE OF ANY MANUFACTURER'S LUMINAIRES MAY VARY DUE TO VARIATION IN ELECTRICAL VOLTAGE, TOLERANCE IN LAMPS, AND OTHER VARIABLE FIELD CONDITIONS.

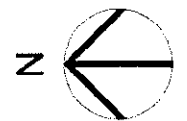


LIGHTSPEC LLC
 PROJECT NAME Saugatuck Fire Station & City Hall Addition
 415 W Wiley Rd., Douglas MI 49406
 DRAWN BY: CMB
 DATE: 5/21/2026
 REVISION #:

Luminaire Schedule								
Symbol	Label	Qty	Description	LLF	Lumens	Manufacturer	Catalog	Mounting Height
☉	DL	24	SURFACE SELECTABLE LED DOWNLIGHT	0.900	1260	BARRON LIGHTING GROUP	DDX-D6-15-C5 (3500K)	9
☼	ELU	6	EMERGENCY LIGHTING UNIT - BATTERY BACKUP	0.900	1	EXITRONIX / BARRON LIGHTING GROUP	LED-95-WH-G2	7.5
☼	ERE	4	EMERGENCY REMOTE HEAD	0.900	1	EXITRONIX	VEX-RG-U-WB-XX-R	9
☼	EX	8	EXIT SIGNAGE - CEILING MOUNTED	0.900	1	EXITRONIX	VEX-RG-U-WB-XX-G2	9
☼	EXR	3	EXIT SIGNAGE - REMOTE CAPABLE - CEILING MOUNTED	0.900	1	EXITRONIX	VEX-RG-U-WB-XX-R-G2	9
☼	EXRC	1	EXIT SIGNAGE COMBO - REMOTE CAPABLE	0.900	1	EXITRONIX	ILXC-RG-WH-R	9
☐	L1	20	RECESSED SELECTABLE LED FLAT PANEL	0.900	3825	DAYBRITE	2SBP2035L8CS-2-UNV-DIM (Mid Output)	9
☑	L1E	11	RECESSED SELECTABLE LED FLAT PANEL	0.900	3825	DAYBRITE	2SBP2035L8CS-2-UNV-DIM-EM10RM (Mid Output)	9
☐	L2	50	RECESSED SELECTABLE LED FLAT PANEL	0.900	2639	NPDL	2SBP2035L8CS-2-UNV-DIM (Low Output)	9
☑	L2E	16	RECESSED SELECTABLE LED FLAT PANEL - EMERGENCY	0.900	2639	NPDL	2SBP2035L8CS-2-UNV-DIM-EM10RM (Low Output)	9
☐	SL	1	SELECTABLE LED STRIP - BATTERY; WALL ABOVE DOOR JAMB	0.900	5809	BARRON LIGHTING GROUP	SLS-4-50-CP-BB (40W, 3500K)	8

Calculation/Layout Notes

1. Calculations are the expected maintained illumination
2. Calculations are measured at workplane (30" AFF), unless noted otherwise
3. Surface reflectances are the following: 80/50/20%
4. Mounting Height is noted in Luminaire Schedule



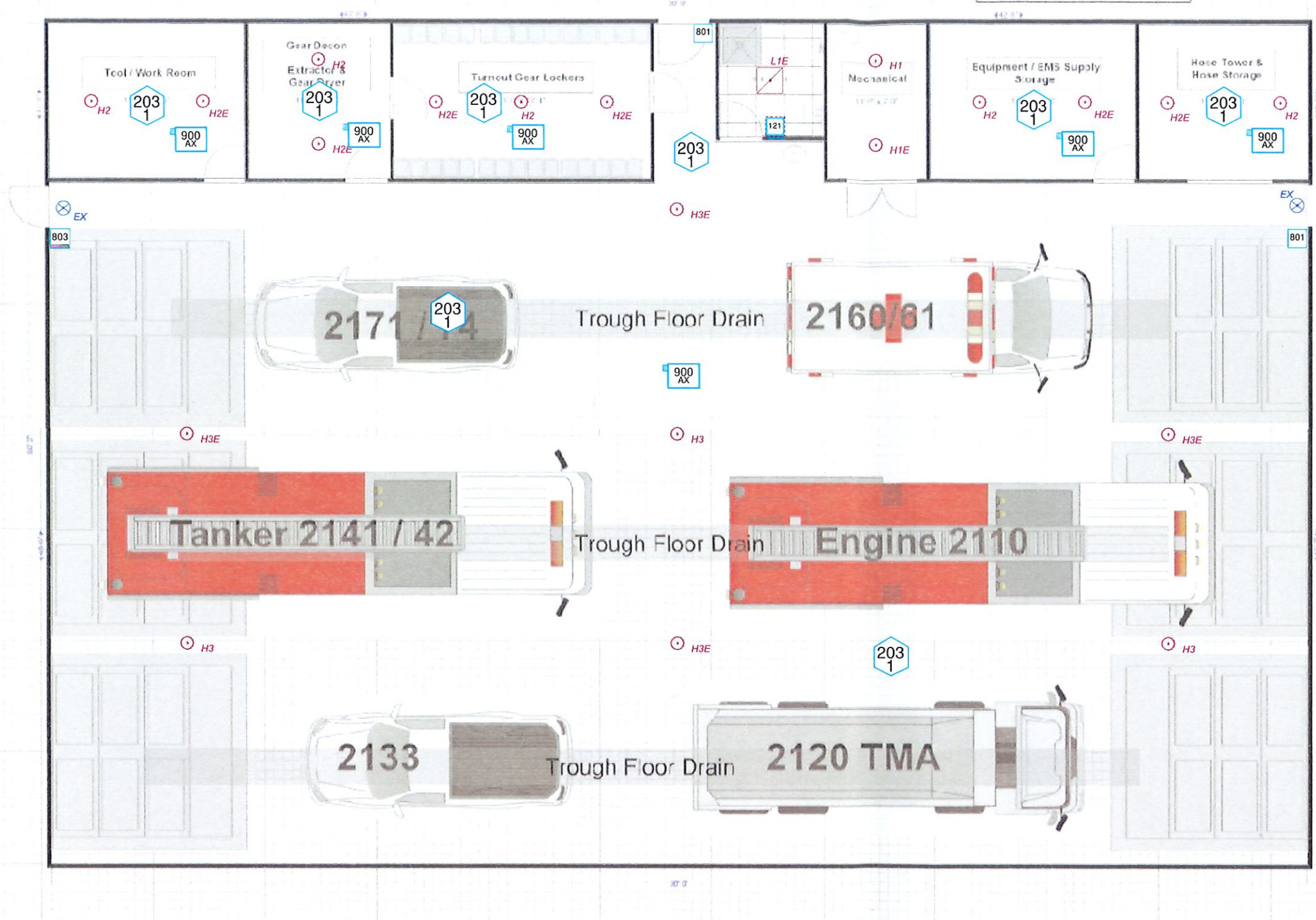
1. THIS LIGHTING DESIGN IS BASED ON INFORMATION SUPPLIED BY OTHERS TO ONLY AS A VISUALIZATION AND FIELD DEVIATIONS MAY SIGNIFICANTLY AFFECT PREDICTED PERFORMANCE. PRIOR TO INSTALLATION, CRITICAL SITE INFORMATION, POLE LOCATIONS, ORIENTATION, MOUNTING HEIGHT, ETC. SHOULD BE COORDINATED WITH THE CONTRACTOR AND/OR SPECIFIER RESPONSIBLE FOR THE PROJECT.

2. LUMINAIRE DATA IS TESTED TO INDUSTRY STANDARDS UNDER LABORATORY CONDITIONS. OPERATING VOLTAGE AND NORMAL MANUFACTURING TOLERANCES OF LAMP, BALLAST, AND LUMINAIRE MAY AFFECT FIELD RESULTS.

3. CONFORMANCE TO FACILITY CODE AND OTHER LOCAL REQUIREMENTS IS THE RESPONSIBILITY OF THE OWNER AND/OR THE OWNER'S REPRESENTATIVE. SITE DETAILS PROVIDED HEREIN ARE REPRODUCED. THIS LAYOUT MAY NOT MEET TITLE 24 OR LOCAL ENERGY REQUIREMENTS. IF THIS LAYOUT NEEDS TO BE TITLE 24 COMPLIANT OR MEET OTHER ENERGY REQUIREMENTS, PLEASE CONSULT FACTORY WITH SPECIFIC DETAILS REGARDING PROJECT REQUIREMENTS SO THAT REVISIONS MAY BE MADE TO THE DRAWING.

THIS LIGHTING PATTERN REPRESENTS ILLUMINATION LEVELS CALCULATED FROM LABORATORY DATA TAKEN UNDER CONTROLLED CONDITIONS IN ACCORDANCE WITH ILLUMINATING ENGINEERING SOCIETY APPROVED METHOD. ACTUAL PERFORMANCE OF ANY MANUFACTURER'S LUMINAIRES MAY VARY DUE TO VARIATION IN ELECTRICAL VOLTAGE, TOLERANCE IN LUMENS, AND OTHER VARIABLE FIELD CONDITIONS.

LIGHTSPEC LLC	
<small>PROJECT NAME Saugatuck Fire Station & City Hall Addition 415 W Wiley Rd., Douglas MI 49406</small>	
<small>DRAWN BY:</small> CMB	
<small>DATE:</small> 5/21/2025	
<small>REVISION #:</small>	



FIRE BARN ADDITION
Scale: 1 inch= 4 Ft.

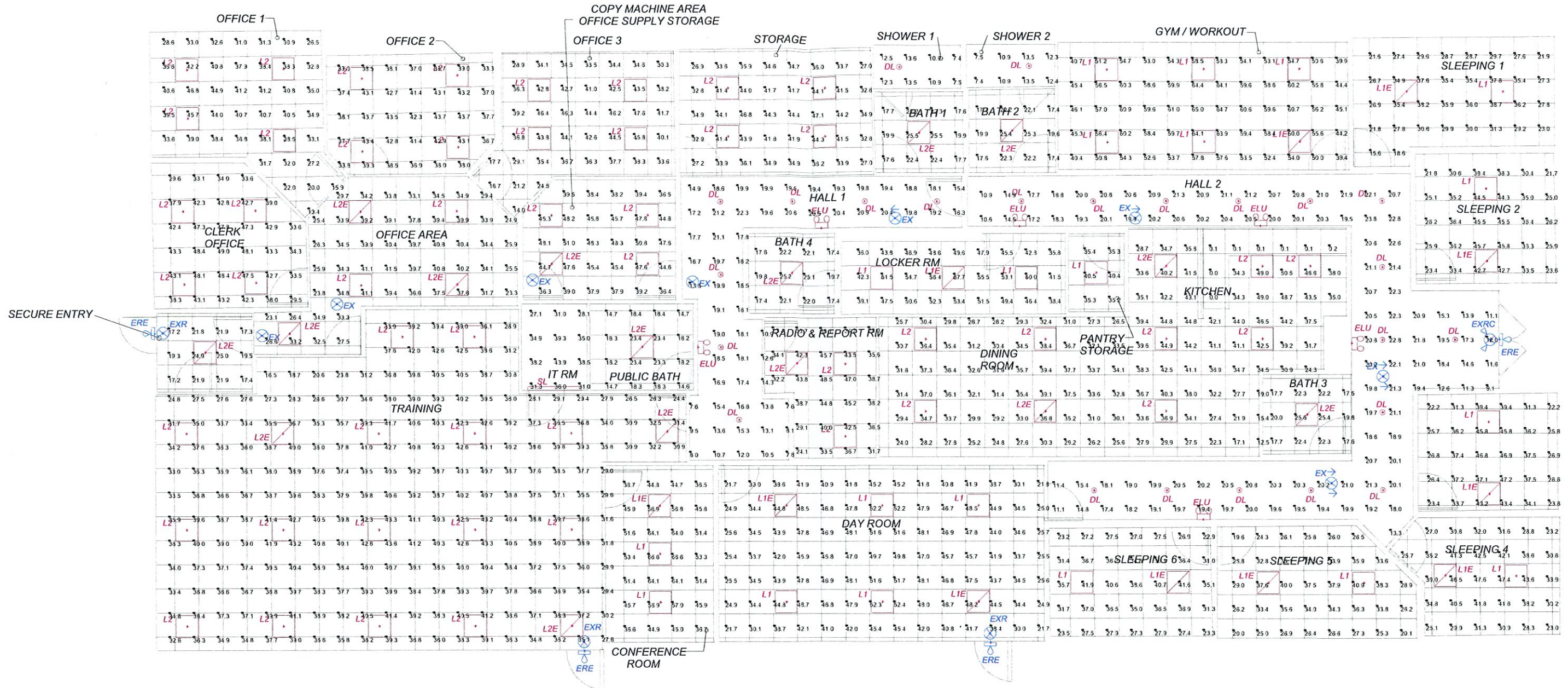
1. THIS LIGHTING DESIGN IS BASED ON INFORMATION SUPPLIED BY OTHERS TO ONLY AS A VISUALIZATION AID. FIELD DEVIATIONS MAY SIGNIFICANTLY AFFECT PREDICTED PERFORMANCE PRIOR TO INSTALLATION. CRITICAL SITE INFORMATION (POLE LOCATIONS, ORIENTATION, MOUNTING HEIGHT, ETC.) SHOULD BE COORDINATED WITH THE CONTRACTOR AND/OR SPECIFIER RESPONSIBLE FOR THE PROJECT.

2. LUMINAIRE DATA IS TESTED TO INDUSTRY STANDARDS UNDER LABORATORY CONDITIONS. OPERATING VOLTAGE AND NORMAL MANUFACTURING TOLERANCES OF LAMP, BALLAST, AND LUMINAIRE MAY AFFECT FIELD RESULTS.

3. CONFORMANCE TO FACILITY CODE AND OTHER LOCAL REQUIREMENTS IS THE RESPONSIBILITY OF THE OWNER AND/OR THE OWNER'S REPRESENTATIVE. SITE DETAILS PROVIDED HEREON ARE REPRODUCED. THIS LAYOUT MAY NOT MEET TITLE 24 OR LOCAL ENERGY REQUIREMENTS. IF THIS LAYOUT NEEDS TO BE TITLE 24 COMPLIANT OR MEET OTHER ENERGY REQUIREMENTS, PLEASE CONSULT FACTORY WITH SPECIFIC DETAILS REGARDING PROJECT REQUIREMENTS SO THAT REVISIONS MAY BE MADE TO THE DRAWING.

THIS LIGHTING PATTERN REPRESENTS ILLUMINATION LEVELS CALCULATED FROM LABORATORY DATA TAKEN UNDER CONTROLLED CONDITIONS IN ACCORDANCE WITH ILLUMINATING ENGINEERING SOCIETY APPROVED METHODS. ACTUAL PERFORMANCE OF ANY MANUFACTURER'S LUMINAIRE MAY VARY DUE TO VARIATION IN ELECTRICAL VOLTAGE, TOLERANCE IN LAMPS, AND OTHER VARIABLE FIELD CONDITIONS.

LIGHTSPEC LLC	
PROJECT NAME: Saugatuck Fire Station & City Hall Addition 415 W Wiley Rd., Douglas MI 49406	
DRAWN BY: CMB	
DATE: 5/21/2026	
REVISION #:	



FIRST FLOOR
Scale: 1 inch= 4 Ft.



1. THIS LIGHTING DESIGN IS BASED ON INFORMATION SUPPLIED BY OTHERS TO ONLY AS A VISUALIZATION AID. FIELD DEVIATIONS MAY SIGNIFICANTLY AFFECT PREDICTED PERFORMANCE. PRIOR TO INSTALLATION, CRITICAL SITE INFORMATION, POLE LOCATIONS, ORIENTATION, MOUNTING HEIGHT, ETC. SHOULD BE COORDINATED WITH THE CONTRACTOR AND/OR SPECIFIER RESPONSIBLE FOR THE PROJECT.

2. LUMINAIRE DATA IS TESTED TO INDUSTRY STANDARDS UNDER LABORATORY CONDITIONS. OPERATING VOLTAGE AND NORMAL MANUFACTURING TOLERANCES OF LAMP, BALLAST AND LUMINAIRE MAY AFFECT FIELD RESULTS.

3. CONFORMANCE TO FACILITY CODE AND OTHER LOCAL REQUIREMENTS IS THE RESPONSIBILITY OF THE OWNER AND/OR THE OWNER'S REPRESENTATIVE. SITE DETAILS PROVIDED HEREON ARE REPRODUCED THIS LAYOUT MAY NOT MEET TITLE 24 OR LOCAL ENERGY REQUIREMENTS. IF THIS LAYOUT NEEDS TO BE TITLE 24 COMPLIANT OR MEET OTHER ENERGY REQUIREMENTS, PLEASE CONSULT FACTORY WITH SPECIFIC DETAILS REGARDING PROJECT REQUIREMENTS SO THAT REVISIONS MAY BE MADE TO THE DRAWING.

THIS LIGHTING PATTERN REPRESENTS ILLUMINATION LEVELS CALCULATED FROM LABORATORY DATA TAKEN UNDER CONTROLLED CONDITIONS IN ACCORDANCE WITH ILLUMINATING ENGINEERING SOCIETY APPROVED METHODS. ACTUAL PERFORMANCE OF ANY MANUFACTURER'S LUMINAIRES MAY VARY DUE TO VARIATION IN ELECTRICAL VOLTAGE, TOLERANCE IN LAMPS, AND OTHER VARIABLE FIELD CONDITIONS.

LIGHTSPEC LLC

PROJECT NAME: Saugatuck Fire Station & City Hall Addition
415 W Wiley Rd., Douglas MI 49406

DRAWN BY: CMB

DATE: 5/21/2026

REVISION #:

Luminaire Schedule								
Symbol	Label	Qty	Description	LLF	Lumens	Manufacturer	Catalog	Mounting Height
⊙	DL	24	SURFACE SELECTABLE LED DOWNLIGHT	0.900	1260	BARRON LIGHTING GROUP	DDX-D6-15-C5 (3500K)	9
⊕	ELU	6	EMERGENCY LIGHTING UNIT - BATTERY BACKUP	0.900	1	EXITRONIX / BARRON LIGHTING GROUP	LED-95-WH-G2	7.5
⊖	ERE	4	EMERGENCY REMOTE HEAD	0.900	1	EXITRONIX	VEX-RG-U-WB-XX-R	9
⊗	EX	8	EXIT SIGNAGE - CEILING MOUNTED	0.900	1	EXITRONIX	VEX-RG-U-WB-XX-G2	9
⊗	EXR	3	EXIT SIGNAGE - REMOTE CAPABLE - CEILING MOUNTED	0.900	1	EXITRONIX	VEX-RG-U-WB-XX-R-G2	9
⊗	EXRC	1	EXIT SIGNAGE COMBO - REMOTE CAPABLE	0.900	1	EXITRONIX	ILXC-RG-WH-R	9
□	L1	20	RECESSED SELECTABLE LED FLAT PANEL	0.900	3825	DAYBRITE	2SBP2035L8CS-2-UNV-DIM (Mid Output)	9
□	L1E	11	RECESSED SELECTABLE LED FLAT PANEL	0.900	3825	DAYBRITE	2SBP2035L8CS-2-UNV-DIM-EM10RM (Mid Output)	9
□	L2	50	RECESSED SELECTABLE LED FLAT PANEL	0.900	2639	NPDL	2SBP2035L8CS-2-UNV-DIM (Low Output)	9
□	L2E	16	RECESSED SELECTABLE LED FLAT PANEL - EMERGENCY	0.900	2639	NPDL	2SBP2035L8CS-2-UNV-DIM-EM10RM (Low Output)	9
—	SL	1	SELECTABLE LED STRIP - BATTERY; WALL ABOVE DOOR JAMB	0.900	5809	BARRON LIGHTING GROUP	SLS-4-50-CP-BB (40W, 3500K)	8

Calculation Summary							
Label	CalcType	Units	Avg	Max	Min	Avg/Min	Max/Min
Bath 1 Workplane	Illuminance	Fc	20.89	25.5	17.6	1.19	1.45
Bath 2 Workplane	Illuminance	Fc	20.76	25.4	17.4	1.19	1.46
Bath 3 Workplane	Illuminance	Fc	20.88	25.6	17.5	1.19	1.46
Bath 4 Workplane	Illuminance	Fc	20.67	25.2	17.4	1.19	1.45
Clerk Office Workplane	Illuminance	Fc	41.22	49.0	29.5	1.40	1.66
Conference Rm Workplane	Illuminance	Fc	51.39	66.6	36.5	1.41	1.82
Copy Machine Area Office Supply Storage Workplane	Illuminance	Fc	43.64	51.0	36.3	1.20	1.40
Dayroom Workplane	Illuminance	Fc	40.93	52.4	21.7	1.89	2.41
GYM Workout Workplane	Illuminance	Fc	55.16	65.0	39.4	1.40	1.65
Hall 1 Workplane	Illuminance	Fc	16.57	22.3	7.6	2.18	2.93
Hall 2 Workplane	Illuminance	Fc	18.93	23.8	9.1	2.08	2.62
IT Rm Workplane	Illuminance	Fc	34.53	43.9	27.1	1.27	1.62
Locker Room Workplane	Illuminance	Fc	47.71	57.7	35.8	1.33	1.61
Office 1 Workplane	Illuminance	Fc	35.17	46.8	13.4	2.62	3.49
Office 2 Workplane	Illuminance	Fc	39.73	43.7	33.0	1.20	1.32
Office 3 Workplane	Illuminance	Fc	36.70	47.6	14.0	2.62	3.40
Office Area Workplane	Illuminance	Fc	33.96	41.5	23.1	1.47	1.80
Pantry Storage Workplane	Illuminance	Fc	37.02	40.5	35.2	1.05	1.15
Public Bath Workplane	Illuminance	Fc	18.66	23.4	14.6	1.28	1.60
Radio & Report Rm Workplane	Illuminance	Fc	37.47	48.5	24.1	1.55	2.01
Secure Entry Workplane	Illuminance	Fc	20.44	25.0	17.2	1.19	1.45
Shower 1 Workplane	Illuminance	Fc	11.08	13.6	7.4	1.50	1.84
Shower 2 Workplane	Illuminance	Fc	11.05	13.5	7.4	1.49	1.82
Sleeping 1 Workplane	Illuminance	Fc	29.96	38.7	15.6	1.92	2.48
Sleeping 2 Workplane	Illuminance	Fc	34.05	45.8	21.7	1.57	2.11
Sleeping 3 Workplane	Illuminance	Fc	34.91	47.2	22.2	1.57	2.13
Sleeping 4 Workplane	Illuminance	Fc	34.94	47.6	23.0	1.52	2.07
Sleeping 5 Workplane	Illuminance	Fc	30.44	40.9	19.6	1.55	2.09
Sleeping 6 Workplane	Illuminance	Fc	32.25	41.9	22.9	1.41	1.83
Storage Workplane	Illuminance	Fc	37.69	47.1	26.9	1.40	1.75
Training Workplane	Illuminance	Fc	36.95	43.6	16.5	2.24	2.64
Dining Room Workplane	Illuminance	Fc	32.59	44.9	12.5	2.61	3.59
Kitchen Workplane	Illuminance	Fc	30.33	50.5	0.0	N.A.	N.A.

Calculation/Layout Notes

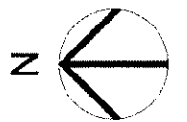
1. Calculations are the expected maintained illumination
2. Calculations are measured at workplane (30" AFF), unless noted otherwise
3. Surface reflectances are the following: 80/50/20%
4. Mounting Height is noted in Luminaire Schedule

1 THIS LIGHTING DESIGN IS BASED ON INFORMATION SUPPLIED BY OTHERS TO ONLY AS A VISUALIZATION AND FIELD DEVIATIONS MAY SIGNIFICANTLY AFFECT PREDICTED PERFORMANCE PRIOR TO INSTALLATION. CRITICAL SITE INFORMATION, POLE LOCATIONS, ORIENTATION, MOUNTING HEIGHT, ETC. SHOULD BE COORDINATED WITH THE CONTRACTOR AND/OR SPECIFIC RESPONSIBLE FOR THE PROJECT.

2 LUMINAIRE DATA IS TESTED TO INDUSTRY STANDARDS UNDER LABORATORY CONDITIONS. OPERATING VOLTAGE AND NORMAL MANUFACTURING TOLERANCES OF LAMP, BALLAST, AND LUMINAIRE MAY AFFECT FIELD RESULTS.

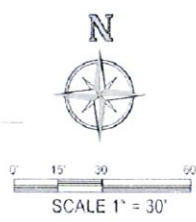
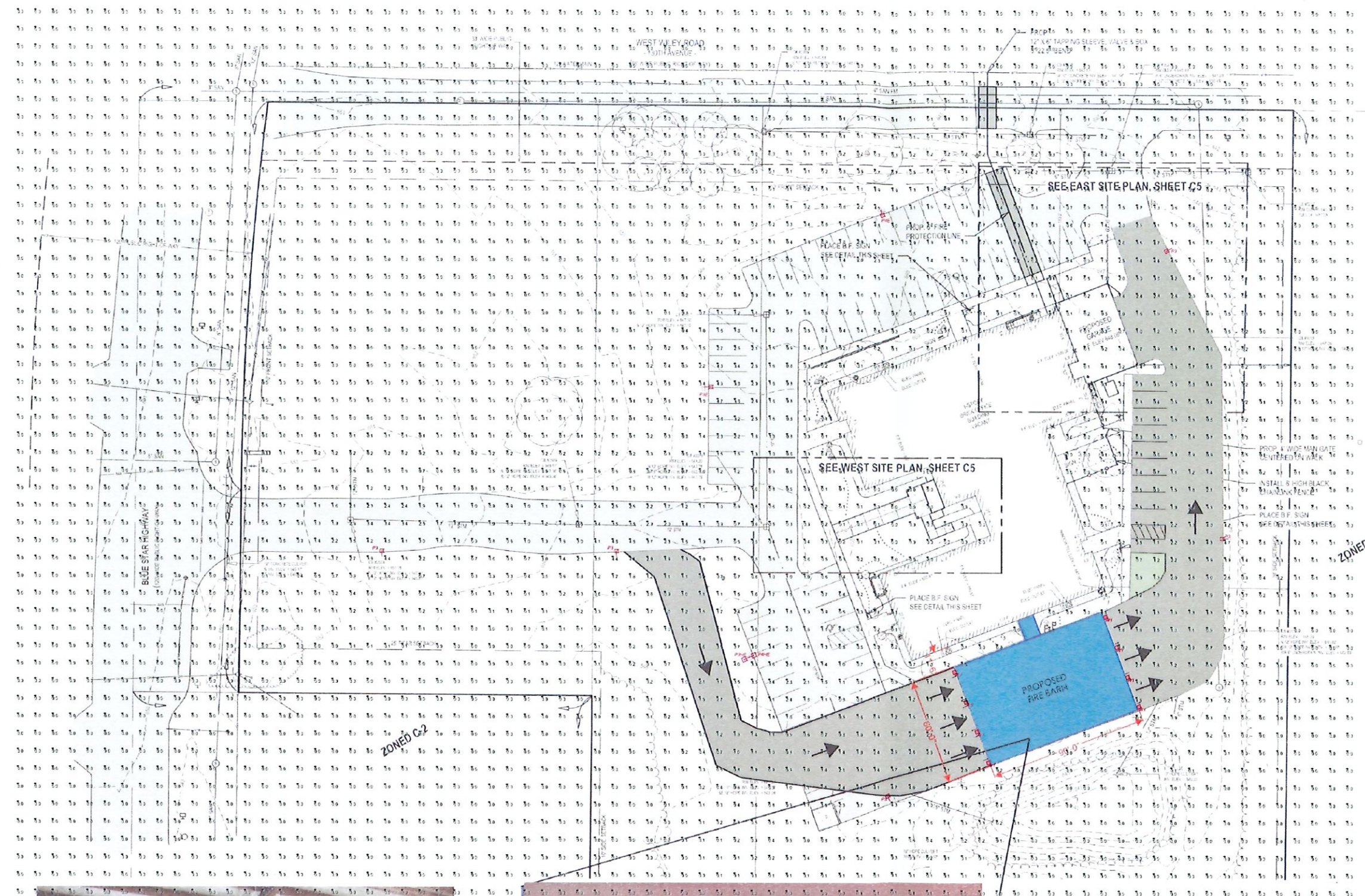
3 CONFORMANCE TO FACILITY CODE AND OTHER LOCAL REQUIREMENTS IS THE RESPONSIBILITY OF THE OWNER AND/OR THE OWNER'S REPRESENTATIVE. SITE DETAILS PROVIDED HEREIN ARE REPRODUCED THIS LAYOUT MAY NOT MEET TITLE 24 OR LOCAL ENERGY REQUIREMENTS. FIELD LAYOUT NEEDS TO BE TITLE 24 COMPLIANT OR MEET OTHER ENERGY REQUIREMENTS. PLEASE CONSULT FACTORY WITH SPECIFIC DETAILS REGARDING PROJECT REQUIREMENTS SO THAT REVISIONS MAY BE MADE TO THE DRAWING.

4 THIS LIGHTING PATTERN REPRESENTS ILLUMINATION LEVELS CALCULATED FROM LABORATORY DATA TAKEN UNDER CONTROLLED CONDITIONS IN ACCORDANCE WITH ILLUMINATING ENGINEERING SOCIETY APPROVED METHODS. ACTUAL PERFORMANCE OF ANY MANUFACTURER'S LUMINAIRE MAY VARY DUE TO VARIATION IN ELECTRICAL VOLTAGE, TOLERANCE IN LAMPS, AND OTHER VARIABLE FIELD CONDITIONS.



LIGHTSPEC LLC
 PROJECT NAME: Saugatuck Fire Station & City Hall Addition
 415 W Wiley Rd., Douglas MI 49406

DRAWN BY: CMB
 DATE: 5/21/2026
 REVISION #:



Scale: 1 inch = 30 Ft.

Luminaire Schedule								
Label	Symbol	Qty	Description	LLF	Lumens	Manufacturer	Catalog	Mounting Height
P3	+	5	LED AREA LIGHT	0.900	16454	Gardco by Signify	OPF-S-16L-740-T3M	20
P3E	+	1	LED AREA LIGHT	0.900	16454	Gardco by Signify	OPF-S-16L-740-T3M	20
P3HE	-	1	LED AREA LIGHT	0.900	12306	Gardco by Signify	OPF-S-16L-740-T3M-HIS	20
P4E	+	1	LED AREA LIGHT	0.900	16164	Gardco by Signify	OPF-S-16L-740-T4W	20
P4HE	-	1	LED AREA LIGHT	0.900	10787	Gardco by Signify	OPF-S-16L-740-T4M-HIS	20
W1	□	8	LED WALL SCNCE	0.900	1521	GARDCO	GWS-A01-840-T4M	15

Calculation Summary							
Label	CalcType	Units	Avg	Max	Min	Avg/Min	Max/Min
Overall Grade	illuminance	Fc	0.24	5.0	0.0	N.A.	N.A.
Fire Barn Drive Grade	illuminance	Fc	1.74	4.7	0.4	4.35	11.75
Parking Area Grade	illuminance	Fc	1.33	5.0	0.2	6.65	25.00
West Entry Drive Grade	illuminance	Fc	1.79	4.6	0.2	8.95	23.00

- Calculation/Layout Notes
1. Calculations are the expected maintained illumination
 2. Calculations are measured at grade, unless noted otherwise
 3. Mounting Heights are reported in Luminaire Schedule

1. THIS LIGHTING DESIGN IS BASED ON INFORMATION SUPPLIED BY OTHERS TO ONLY AS A VISUALIZATION AID. FIELD DEVIATIONS MAY S/GNF CAVITLY AFFECT FRED CTED PERFORMANCE. PRIOR TO INSTALLATION, CRITICAL SITE INFORMATION, POLE LOCATIONS, ORIENTATION, MOUNTING HEIGHT, ETC.) SHOULD BE COORDINATED WITH THE CONTRACTOR AND/OR SPEC'FIER RESPONSIBLE FOR THE PROJECT.

2. LUMINAIRE DATA IS TESTED TO INDUSTRY STANDARDS UNDER LABORATORY CONDITIONS. OPERATING VOLTAGE AND NORMAL MANUFACTURING TOLERANCES OF LAMP, BALLAST, AND LUMINAIRE MAY AFFECT FIELD RESULTS.

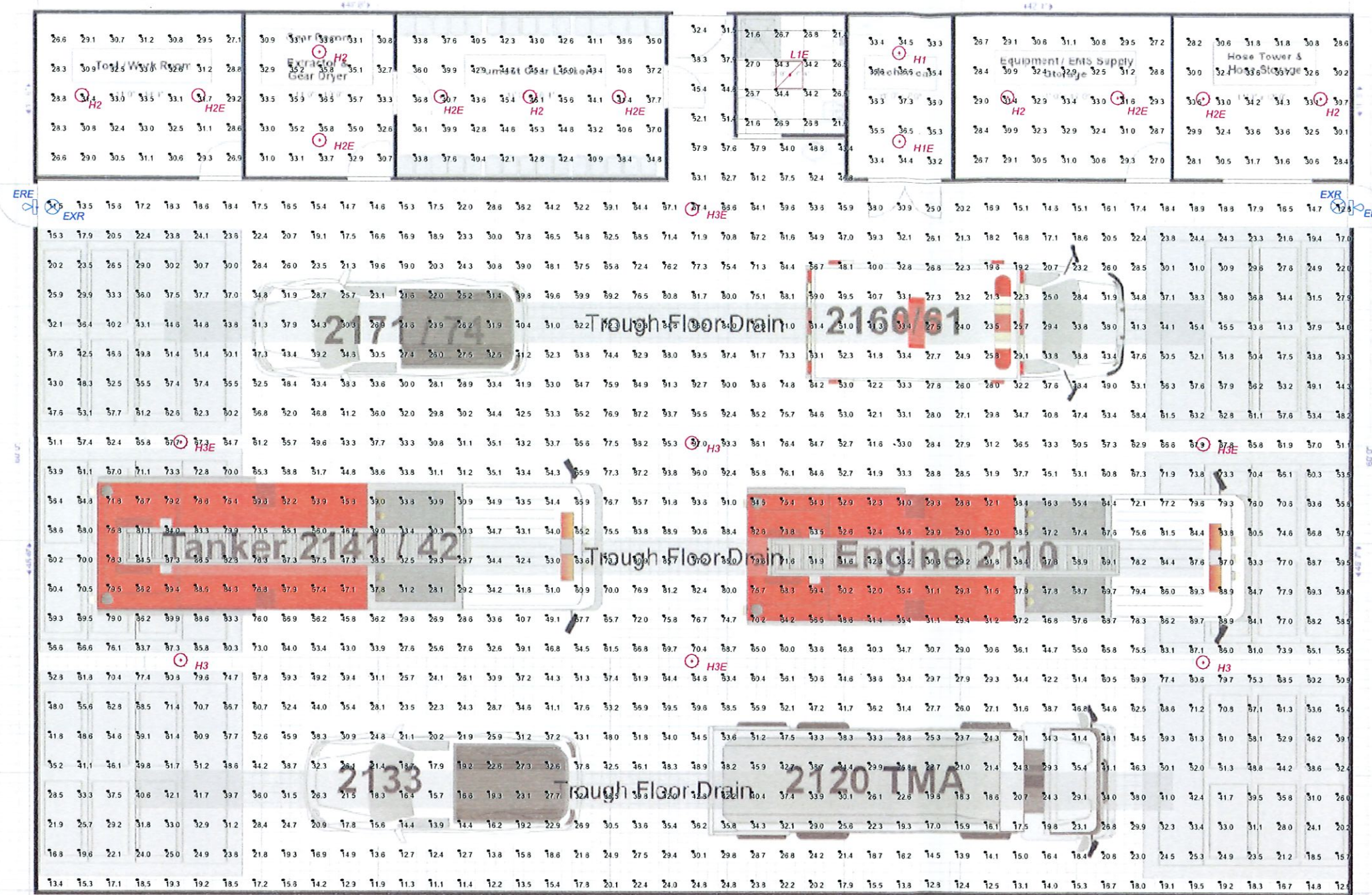
3. CONFORMANCE TO FACILITY CODE AND OTHER LOCAL REQUIREMENTS IS THE RESPONSIBILITY OF THE OWNER AND/OR THE OWNER'S REPRESENTATIVE. SITE DETAILS PROVIDED HEREON ARE REPRODUCED THIS LAYOUT MAY NOT MEET TITLE 24 OR LOCAL ENERGY REQUIREMENTS. IF THIS LAYOUT NEEDS TO BE TITLE 24 COMPLIANT OR MEET OTHER ENERGY REQUIREMENTS, PLEASE CONSULT FACTORY WITH SPECIFIC DETAILS REGARDING PROJECT REQUIREMENTS SO THAT REVISIONS MAY BE MADE TO THE DRAWING.

THIS LIGHTING PATTERN REPRESENTS ILLUMINATION LEVELS CALCULATED FROM LABORATORY DATA TAKEN UNDER CONTROLLED CONDITIONS IN ACCORDANCE WITH ILLUMINATING ENGINEERING SOCIETY APPROVED METHODS. ACTUAL PERFORMANCE OF ANY MANUFACTURERS LUMINAIRE MAY VARY DUE TO VARIATION IN ELECTRICAL VOLTAGE, TOLERANCE IN LAMPS, AND OTHER VARIABLE FIELD CONDITIONS.

LIGHTSPEC LLC
 PROJECT NAME: Saugatuck Fire Station & City Hall Addition
 415 W Wey Rd., Douglas MA 01940

DRAWN BY: CMB
 DATE: 5/20/2026
 REVISION #:

415 Wiley Road
Potential Saugatuck Twp. Fire District
60x90 Station Layout
3/28/2025 - 2192-CM



Calculation/Layout Notes

1. Calculations are the expected maintained illumination
2. Calculations are measured at workplane (30" AFF), unless noted otherwise
3. Surface reflectances are the following: 80/50/20%
4. Mounting Height is noted in Luminaire Schedule

FIRE BARN
Scale: 1 inch = 4 Ft.

Label	Symbol	Qty	Description	LLF	Lumens	Manufacturer	Catalog	Mounting Height
ERE	⚡	2	EMERGENCY REMOTE HEAD	0.900	1	EXITRONIX	VEX-RG-U-WB-XX-R	9
EXR	⊗	2	EXIT SIGNAGE - REMOTE CAPABLE - CEILING MOUNTED	0.900	1	EXITRONIX	VEX-RG-U-WB-XX-R-G2	9
H1	⊙	1	SELECTABLE LED HIGH BAY	0.900	8000	DAYBRITE	HCY0822L8CST-UN3-DIM-100W-4000K (8,000 LUMENS, 50W)	19
H1E	⊙	1	SELECTABLE LED HIGH BAY - BATTERY	0.900	8000	DAYBRITE	HCY0822L8CST-UN3-DIM-100W-4000K-IHB-EM-DVR-40W (8,000 LUMENS, 50W)	19
H2	⊙	5	SELECTABLE LED HIGH BAY	0.900	8000	DAYBRITE	HCY0822L8CST-UN3-DIM-100W-4000K (14,000 LUMENS, 90W)	19
H2E	⊙	6	SELECTABLE LED HIGH BAY - BATTERY	0.900	8000	DAYBRITE	HCY0822L8CST-UN3-DIM-100W-4000K-IHB-EM-DVR-40W (14,000 LUMENS, 90W)	19

Label	Symbol	Qty	Description	LLF	Lumens	Manufacturer	Catalog	Mounting Height
H3	⊙	3	SELECTABLE LED HIGH BAY	0.900	33000	DAYBRITE	HCY2437L8CST-UN3-DIM-200W-4000K	19
H3E	⊙	4	SELECTABLE LED HIGH BAY - BATTERY	0.900	32999	DAYBRITE	HCY0822L8CST-UN3-DIM-100W-4000K-IHB-EM-DVR-40W(14,000 LUMENS, 90W)	19
L1E	⊞	1	RECESSED SELECTABLE LED FLAT PANEL	0.900	3825	DAYBRITE	2SBP2035L8CS-2-UNV-DIM-EM10RM (Mid Output)	9

Label	CalcType	Units	Avg	Max	Min	Avg/Min	Max/Min
Apparatus Bays_Workplane	Illuminance	Fc	45.57	97.0	11.1	4.11	8.74
Equipment EMS Supply Storage_Workplane	Illuminance	Fc	30.39	33.4	26.7	1.14	1.25
Gear Decon_Workplane	Illuminance	Fc	33.65	36.5	30.7	1.10	1.19
Hose Tower & Hose Storage_Workplane	Illuminance	Fc	31.44	34.3	28.1	1.12	1.22
Mechanical Workplane	Illuminance	Fc	35.11	37.3	33.2	1.06	1.12
Toilet Room_Workplane	Illuminance	Fc	27.34	34.4	21.4	1.28	1.61
Tool_Work Room_Workplane	Illuminance	Fc	30.39	33.5	26.6	1.14	1.26
Turnout Gear Lockers_Workplane	Illuminance	Fc	40.86	46.1	33.8	1.21	1.36

1. THIS LIGHTING DESIGN IS BASED ON INFORMATION SUPPLIED BY OTHERS TO ONLY AS A VISUALIZATION AND FIELD DEVIATIONS MAY SIGNIFICANTLY AFFECT PREDICTED PERFORMANCE PRIOR TO INSTALLATION. CRITICAL SITE INFORMATION (POLE LOCATIONS, ORIENTATION, MOUNTING HEIGHT, ETC.) SHOULD BE COORDINATED WITH THE CONTRACTOR AND/OR SPECIFIER RESPONSIBLE FOR THE PROJECT.
 2. LUMINAIRE DATA IS TESTED TO INDUSTRY STANDARDS UNDER LABORATORY CONDITIONS. OPERATING VOLTAGE AND NORMAL MANUFACTURING TOLERANCES OF LAMP, BALLAST, AND LUMINAIRE MAY AFFECT FIELD RESULTS.
 3. CONFORMANCE TO FACILITY CODE AND OTHER LOCAL REQUIREMENTS IS THE RESPONSIBILITY OF THE OWNER AND/OR THE OWNER'S REPRESENTATIVE. SITE DETAILS PROVIDED HEREON ARE REPRODUCED FROM THE LAYOUT AND MAY NOT MEET TITLE OR LOCAL ENERGY REQUIREMENTS. IF THE LAYOUT NEEDS TO BE TITLE OR COMPLIANT WITH OTHER ENERGY REQUIREMENTS, PLEASE CONSULT FACILITY WITH SPECIFIC DETAILS REGARDING PROJECT REQUIREMENTS SO THAT REVISIONS MAY BE MADE TO THE DRAWING.
 THIS LIGHTING PATTERN REPRESENTS ILLUMINATION LEVELS CALLED FROM LABORATORY DATA TAKEN UNDER CONTROLLED CONDITIONS IN ACCORDANCE WITH ILLUMINATING ENGINEERING SOCIETY APPROVED METHODS. ACTUAL PERFORMANCE OF ANY MANUFACTURER'S LUMINAIRE MAY VARY DUE TO VARIATION IN ELECTRICAL VOLTAGE, TOLERANCE IN LAMPS, AND OTHER VARIABLE FIELD CONDITIONS.

LIGHTSPEC LLC
 PROJECT NAME: Saugatuck Fire Station & City Hall Addition
 415 W Wiley Rd., Douglas MI 49406
 DRAWN BY: CMB
 DATE: 5/21/2025
 REVISION #: