



421 S Nine Mound Road
Verona, WI 53593

W228 N2792 Duplainville Road
Waukesha, WI 53186

1-833-928-1429

Proposal Number 1026969

Customer Information:

Dodgeville Fire Dept.
401 North Level Street
Dodgeville, WI53533
608-574-2432
dfire@mhtc.net

Job Site Contact Information:

401 North Level Street
Dodgeville53533
Brian Whitehouse
608-574-2432
dfire@mhtc.net

Proposal Prepared By:

Jesse Garcia
(608) 732-5596
jgarcia@zandersolutions.com

Scheduling By:

Brandi Coryell
608-821-4381
bcoryell@zandersolutions.com

Please check the box of what options you like to have done.

Description	Price
<input type="checkbox"/> <h3>Option 1: (One 60' trench)</h3> <ul style="list-style-type: none"> mark and saw cut into concrete. Jackhammer concrete to accept new trench drain Drill into existing concrete and install rebar or pinning as needed. Install Z882-CBF-BDE-(2) E1-(1) U4-CUT 60' RUN Class E (ZURN) Install new concrete around trench drain Haul away and dispose of all debris. 	\$23,979.84
<input type="checkbox"/> <h3>Option 2: (One 60' trench)</h3> <ul style="list-style-type: none"> mark and saw cut into concrete. Jackhammer concrete to accept new trench drain Drill into existing concrete and install rebar or pinning as needed. Install JR Smith D9879 14" Trench Drain Class F trench drain. Install Ductile Iron frame Install new concrete around trench drain Haul away and dispose of all debris. 	\$29,046.17
<input type="checkbox"/> <h3>Option 3: (Four 60' trench's)</h3> <ul style="list-style-type: none"> mark and saw cut into concrete. Jackhammer concrete to accept new trench drain Drill into existing concrete and install rebar or pinning as needed. Install Z882-CBF-BDE-(2) E1-(1) U4-CUT 60' RUN Class E (ZURN) Install new concrete around trench drain Haul away and dispose of all debris. 	\$78,043.36



Option 4: (Four 60' trench's)

\$98,328.68

- mark and saw cut into concrete.
- Jackhammer concrete to accept new trench drain
- Drill into existing concrete and install rebar or pinning as needed.
- Install JR Smith D9879 14" Trench Drain Class F trench drain.
- Install Ductile Iron frame
- Install new concrete around trench drain
- Haul away and dispose of all debris.

Total

Total

\$0.00

Instructions:

- Owner is to select desired items from the above menu by checking the boxes to the right. The total will reflect the selected items. To move forward with the selected work a signature and 50% deposit will be required prior to scheduling.
- The work areas must be clear of vehicles and equipment. There will be some saw dust present.

Does Not Include:

Removal or replacement of main basins or basin grates. The above is for the actual trench runs only, we will use the same basins.

Additional Notes:

- Please allow 3-5 working days for our scheduling department to contact you after a signature and deposit has been made.



Z882

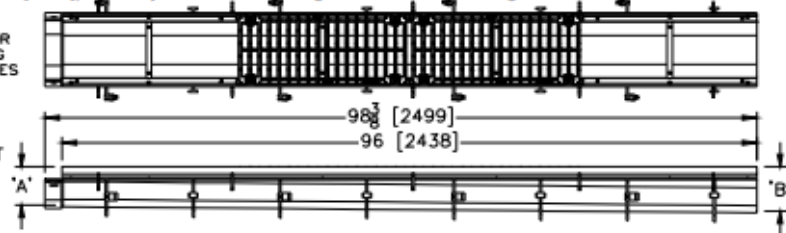
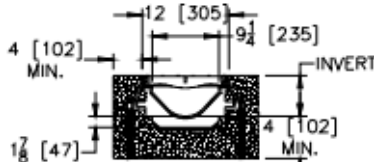
12 [305] WIDE REVEAL TRENCH DRAIN SYSTEM WITH STEEL FRAME

SPECIFICATION SHEET

TAG

Dimensional Data (inches and [mm]) are Subject to Manufacturing Tolerances and Change Without Notice

SPECIFYING ENGINEER IS RESPONSIBLE FOR CONCRETE ENCASEMENT AND REINFORCING BASED UPON APPLICATION AND LOCAL CODES



Note: + Actual Channel length is 98 3/8 [2499] to allow for overlap.

ENGINEERING SPECIFICATION: Zurn Z882

Channels shall be 96" [2438mm] long, 12" [305mm] wide reveal and have a 9-1/4" [235mm] throat. Modular channel sections shall be made of 0% water absorbent High Density Polyethylene (HDPE). Shall have a positive mechanical connection between channel sections that will not separate during the installation and shall mechanically lock into the concrete surround every 12" [305mm]. Channels shall weigh less than 5.05 lbs. [2.29kg] per linear foot, have a smooth, 3" [76mm] radiused self cleaning bottom with a Manning's coefficient of 0.009 and 1.04% or neutral 0% built in slope. Channels shall have rebar clips standard to secure trench in its final location. Shall be provided with standard DGC grates that lock down to frame. Zurn 12" [305mm] wide reveal ductile iron slotted grate conforming to ASTM specification A536-84, Grade 80-55-06. Ductile iron grate is rated class C per the DIN EN1433 top load classifications. Supplied in 24" [608mm] nominal lengths with 13/16" [21mm] wide slots, and 1-1/2" [38mm] bearing depth. Grate has an open area of 80.8 sq. in per ft. [171,027 sq. mm per meter]. The 1/4" [6mm] thick heavy-duty carbon steel frame assembly conforms to ASTM specification A36 with 10 - 4" [102mm] long concrete anchors per 96" [2438mm]. Grate lockdown bars are to be integral to the frame. The frame is supplied with a powder coated finish. All welds must be performed by a certified welder per ASTM standard AWS D1.1. Frames Shall be produced in the U.S.A.

PREFIX OPTIONS (Check/specify appropriate options)

- Z Eight-foot High Density Polyethylene (HDPE) Channel, Heavy-Duty Frame with Anchor Studs.*

SUFFIX OPTIONS (Check/specify appropriate options)

Outlet Adapters Add/Each

- E1 Closed End Cap
- E4 4 [102] No-Hub End Outlet
- E6 6 [152] No-Hub End Outlet
- E8 8 [203] No-Hub End Outlet
- U4 4 [102] No-Hub Bottom Outlet
- U6 6 [152] No-Hub Bottom Outlet
- U8 8 [203] No-Hub Bottom Outlet

Grate Options (Load Classifications are per DIN EN1433)

- BDC Black Acid Resistant Epoxy Coated Ductile Grate - Class C
- BDE Black Acid Resistant Epoxy Coated Ductile Grate - Class E
- BDF Black Acid Resistant Epoxy Coated Ductile Grate - Class F
- DC Ductile Iron Solid Cover - Class E
- DGC Ductile Iron Slotted Grate - Class C*
- DGE Ductile Iron Slotted Grate - Class E
- DGF Ductile Iron Slotted Grate - Class F
- GDC Galvanized Ductile Slotted Grate - Class C
- GDE Galvanized Ductile Slotted Grate - Class E
- GDF Galvanized Ductile Slotted Grate - Class F
- GHPD Galvanized Heel-Proof Ductile Grate - Class B
- GHPDE Galvanized Heel-Proof Ductile Slotted Grate - Class E
- HPD Heel-Proof Ductile Slotted Grate - Class B
- HPDE Heel-Proof Ductile Slotted Grate - Class E
- HPDE Heel-Proof Ductile Slotted Grate - Class E
- RFGC Reinforced Slotted Galvanized Grate - Class C
- RPGC Reinforced Perforated Galvanized Grate - Class C
- RPGRG Reinforced Perforated Galvanized Reverse Punch Grate - Class C

Trench No.	'A'		'B'		Flow		
	Shallow Inv.	Deep Inv.	(cfs)	(gpm)	(lps)		
8201	6.25 [159]	7.25 [184]	1.241	557	35		
8202	7.25 [184]	8.25 [210]	1.725	774	49		
8203	8.25 [210]	9.25 [235]	2.226	999	63		
8203N	9.25 [235]	9.25 [235]	-	-	-		
8204	9.25 [235]	10.25 [260]	2.745	1232	78		
8205	10.25 [260]	11.25 [286]	3.271	1468	93		
8206	11.25 [286]	12.25 [311]	3.808	1709	108		
8206N	12.25 [311]	12.25 [311]	-	-	-		
8207	12.25 [311]	13.25 [337]	4.347	1951	123		
8208	13.25 [337]	14.25 [362]	4.893	2196	139		
8209	14.25 [362]	15.25 [387]	5.443	2443	155		
8209N	15.25 [387]	15.25 [387]	-	-	-		
8210	15.25 [387]	16.25 [413]	5.996	2691	170		
8211	16.25 [413]	17.25 [438]	6.551	2940	186		
8212	17.25 [438]	18.25 [464]	7.106	3189	202		

- RFSC Reinforced Slotted Stainless Steel Grate - Class C
- RPSC Reinforced Perforated Stainless Steel Grate - Class C
- RPSRC Reinforced Perforated Stainless Steel Reverse Punch Grate - Class C

Miscellaneous Options

- CBF Black Acid Resistant Coated Top Frame
- JC Joint Connector
- SW Sidewall Extensions - 11 [279] High
- SW2 Double Sidewall Extensions - 22 [559] High
- VP Vandal-Proof Lockdown

MADE in the U.S.A.

- ADA-USA Meets Americans with Disabilities Act Requirements - Class C
- BG Galvanized Steel Bar Grate - Class D
- DGC-USA Ductile Iron Slotted Grate - Class C
- DGE-USA Ductile Iron Slotted Grate - Class E
- FG Fabricated Galvanized Steel Slotted Grate - Class A
- FS Fabricated Stainless Steel Slotted Grate - Class A
- GADA-USA Galvanized Ductile ADA Slotted Grate - Class C
- GDC-USA Galvanized Ductile Slotted Grate - Class C
- GDE-USA Galvanized Ductile Slotted Grate - Class E
- GHPDE-USA Galvanized Ductile Slotted Grate - Class E
- HPDE-USA Heel-Proof Ductile Slotted Grate - Class E

- GG Fiberglass Grate - Class A
- PG Perforated Galvanized Steel Grate - Class A
- PS Perforated Stainless Steel Grate - Class A
- SBG-L Stainless Steel Bar Grate - Class C

Miscellaneous Options

- DB Bottom Dome Strainer

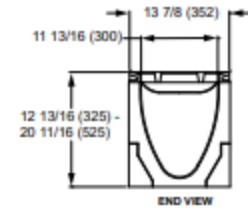
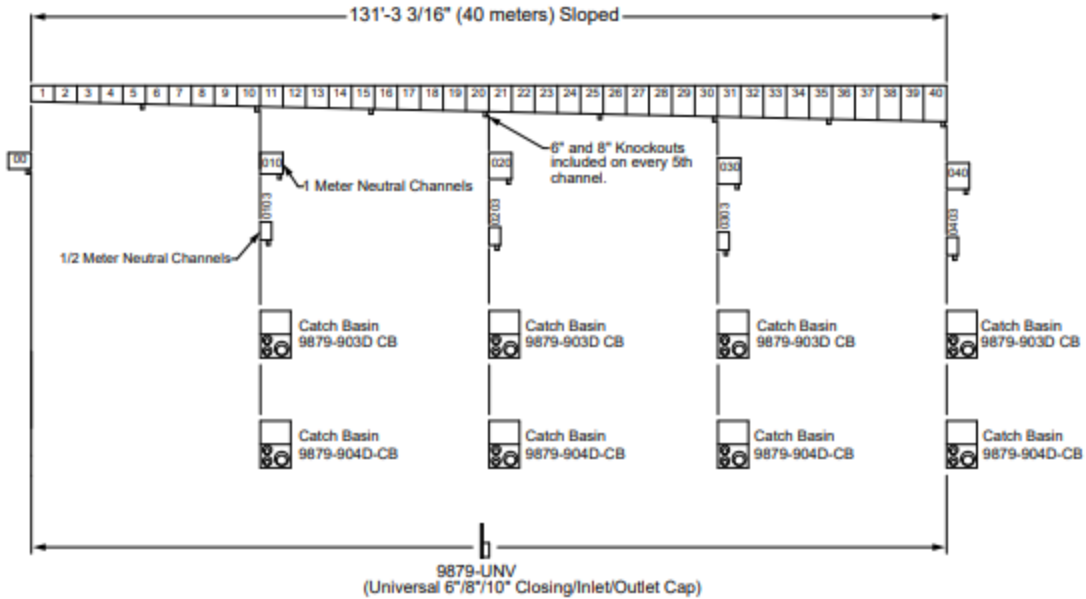
* Regularly furnished unless otherwise specified.



LOCATION

14" WIDE 9879 POWERLOK® DRAIN SYSTEM w/INTEGRAL DUCTILE IRON EDGE RAIL

B DRAWING NUMBER: **9879**
 SIZE: **A**
 SCALE: **NONE**
 DATE: **4-6-15**
 APPROVED BY: **PJ**
 CHECKED BY: **PJ**
 DRAWN BY: **TBW**
9879
 DIMENSIONS ARE SUBJECT TO MANUFACTURERS TOLERANCE AND CHANGE WITHOUT NOTICE
 WE CAN ASSUME NO RESPONSIBILITY FOR USE OF SUPERSEDED OR VOID DATA



REGULARLY FURNISHED:
 1 meter (3.28') Precast Polyester Concrete Channel of Interlocking Design with a Built In Slope of .5%. Channel has an Integral Ductile Iron Edge Rail, Radiused Bottom and 12" Internal Width. Supplied with Secured Ductile Iron Slotted Grate.

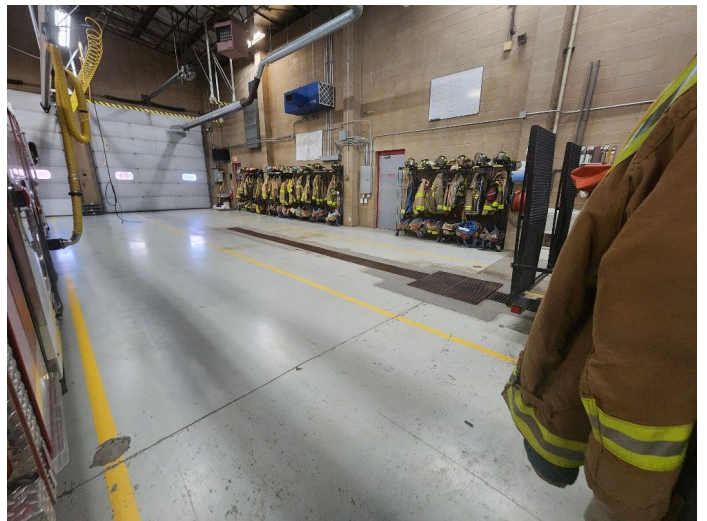
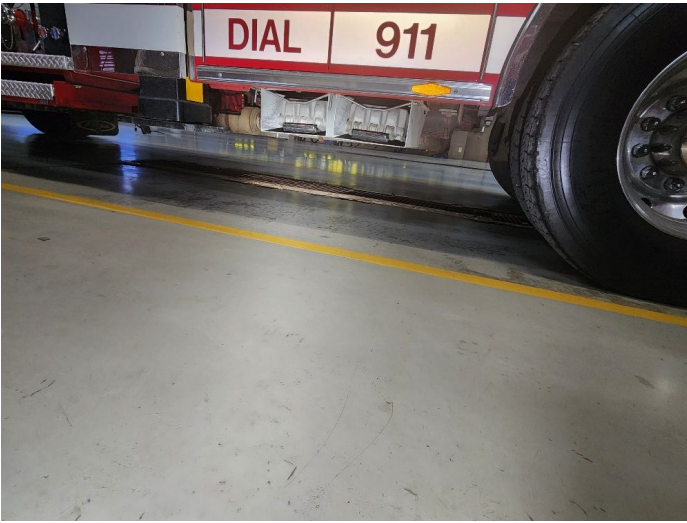
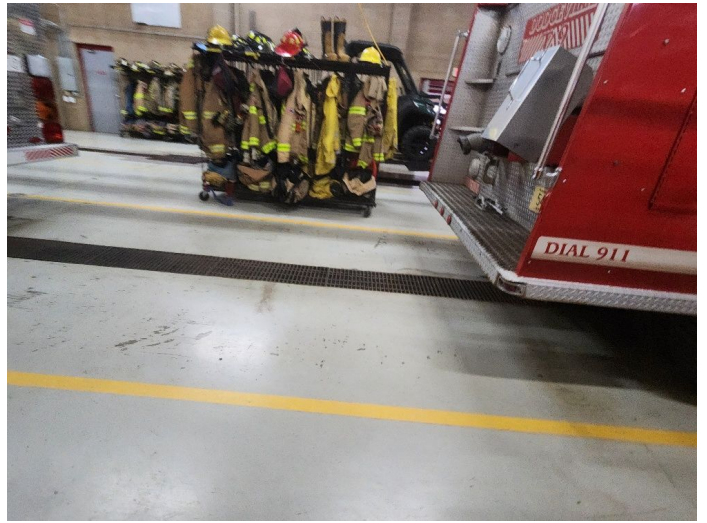
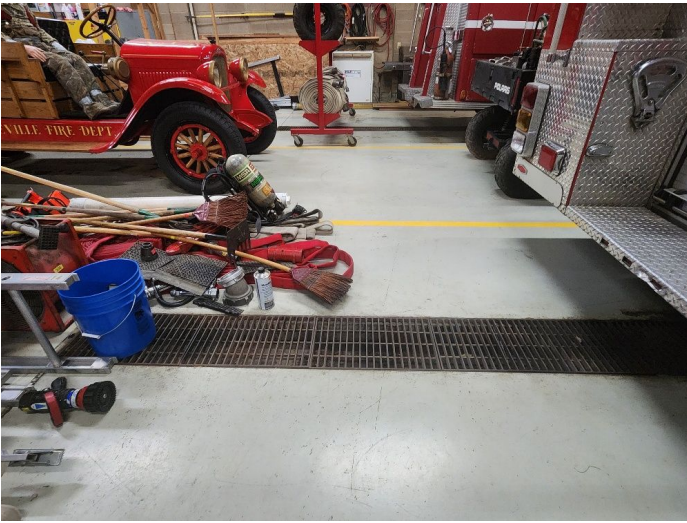
- VARIATIONS:**
- Grate Specifications (See Back)
 - 6 7/8" x 10" Closing/Inlet/Outlet Cap -UNV
 - 9879-903D Catch Basin
 - 9879-904D Catch Basin
 - Foul Air Trap (4" only)
 - Installation Device
 - Grate Removal Tool

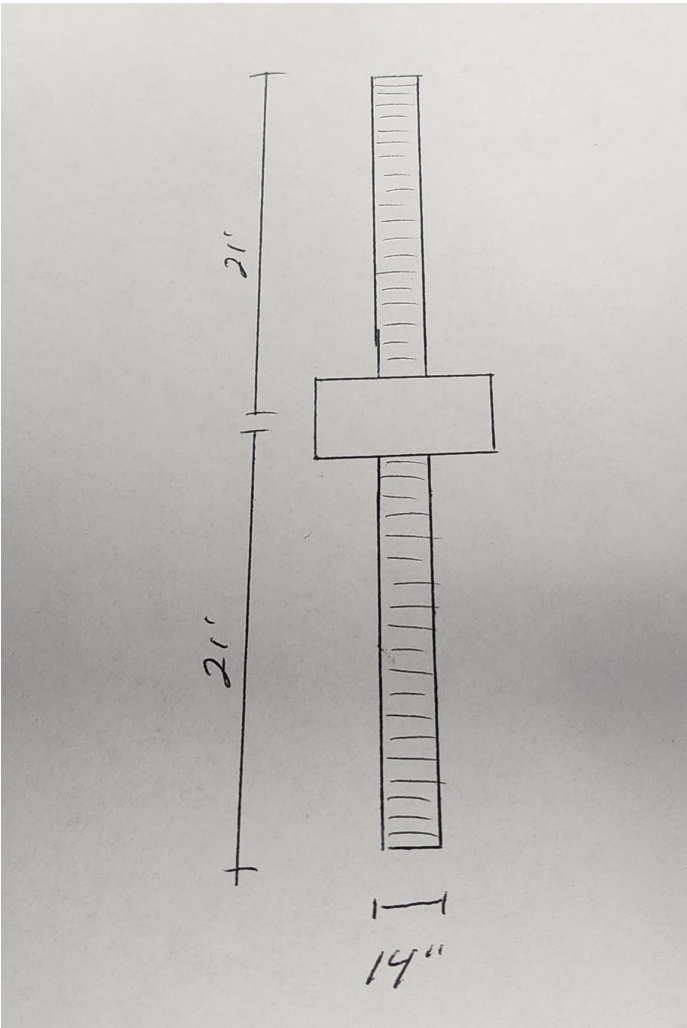
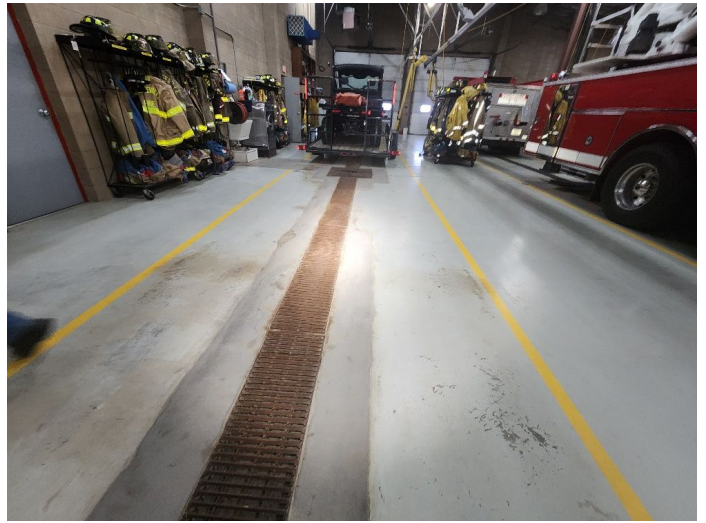
Note: This Trench Drain System is designed for "On Grade Applications Only" as There are No Provisions for a Flashing Flange or Flashing Clamp.

Note: Catch Basins Come Standard with Plastic Buckets and Secured Ductile Iron Grate Per Specification.

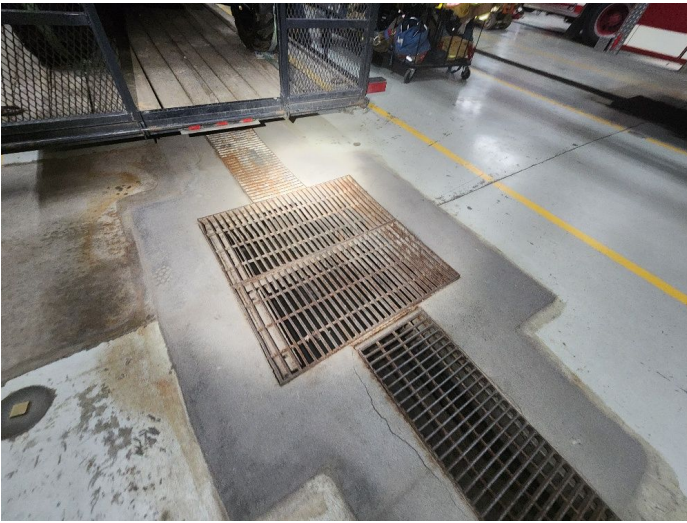
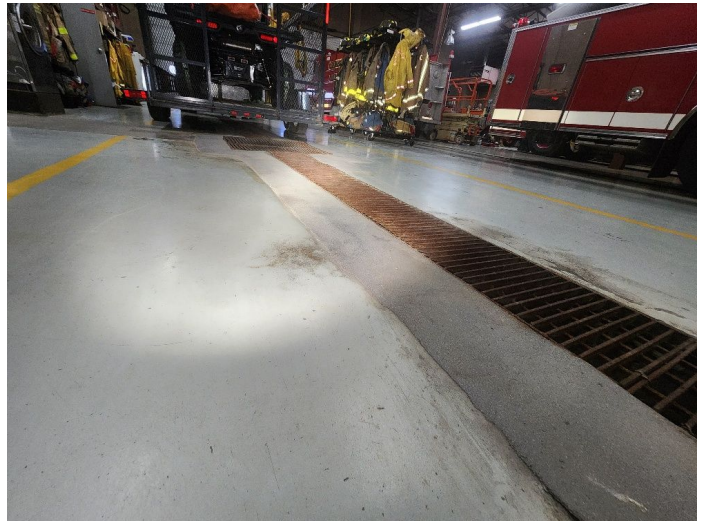


FIGURE NUMBER	REV.	DATE	DESCRIPTION	BY	CKD. BY	WEIGHT POUNDS	VOLUME CUBIC FEET	FIGURE NUMBER
9879	B	9-1-23	Removed Function Updated Outlet Cap	HS	CL			9879
	A	12-14-15		TBW	Pace			





- Current trench drain is 9" deep
- we will extend length from approx. 42' to 60'
- We will use the same basin



Customer Signature & Date / Electronic Payment

Wisconsin Lien Law

Standard Wisconsin Lien Law Language

As required by the Wisconsin construction lien law, owner is hereby notified that persons or companies performing, furnishing or procuring labor, services, materials, plans, or specifications for the construction owner's land may have lien rights on owners land and buildings if they are not paid. Those entitled to lien rights, in addition to Zander Solutions, Inc. are those who contract directly with owner or those who are required to and do give owner notice within sixty (60) days after they first perform, furnish or procure labor, services materials, plans or specifications for the construction. Accordingly, owner probably will receive notices from those who perform, furnish or procure labor, services, materials, plans or specifications for the construction, and should give a copy of each notice received to owner's mortgage lender, if any. Zander Solutions, Inc. agrees to cooperate with owner and owner's lender, if any, to see that all potential lien claimants are duly paid.

Terms & Conditions

The above prices, specifications, terms, and conditions, including attached ZANDER SOLUTIONS STANDARD TERMS AND CONDITIONS, are satisfactory and accepted. You are authorized to do the work as specified. Payment will be made as specified. I acknowledge that I have received from Zander a copy of NOTICE REGARDING RIGHT TO RECEIVE LIEN WAIVERS and a copy of the Wisconsin 'Right to Cure Law' brochure. Payment is due on substantial completion of the work as specified. Customer may not take any deductions from payments due Zander, unless Customer has received a written credit memorandum from Zander authorizing that deduction. All past due payments are subject to finance charges equal to 1.5% per month for each month or fraction thereof elapsed after the date due on all amounts past due from the date due until the date of payment. In addition, Customer will reimburse Zander on demand for all costs and expenses, including reasonable attorney's fees, incurred by Zander in collecting any past due obligations from Customer. This information is confidential and intended solely for addressees. Any unauthorized access, use, reproduction, or dissemination is prohibited.

All material is guaranteed to be as specified. All work to be completed in a workmanlike manner according to standard practices. Any alteration or deviation from specifications involving extra work will be executed only upon written orders, and will become an extra charge over and above quoted price. Customer to carry fire and casualty and general liability insurance. Zander's employees are fully covered by Workman's Compensation Insurance. This Proposal is subject to delays occasioned by strikes, fires, accidents or any other cause beyond Zander's reasonable control. This Proposal is covered by and subject to ZANDER SOLUTIONS STANDARD TERMS AND CONDITIONS. Acceptance of the Proposal is expressly limited to all the terms of the Proposal. No additional or different terms offered by Customer shall be or become a part of the Proposal, without the express written approval of Zander. The Proposal may be withdrawn by Zander before it is accepted, and the Proposal will be deemed withdrawn unless it is accepted by Customer within thirty (30) days from the date of the Proposal.