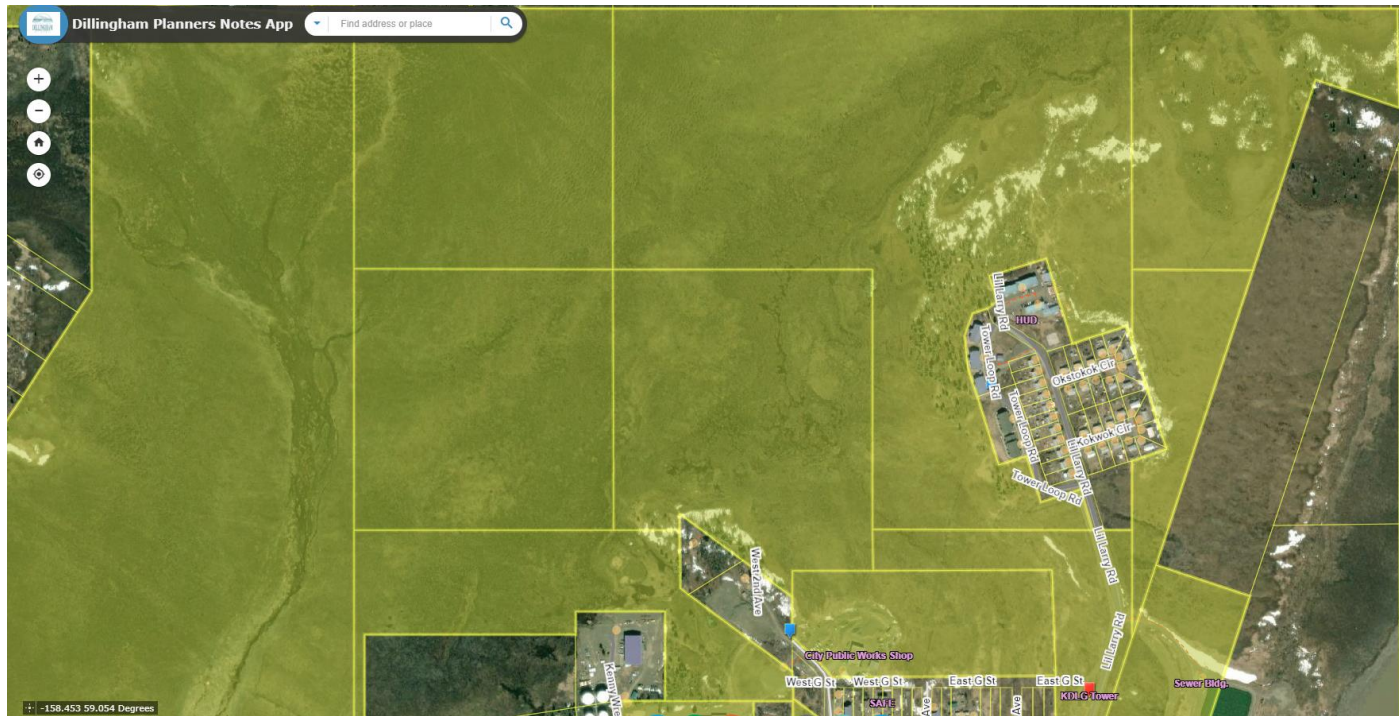


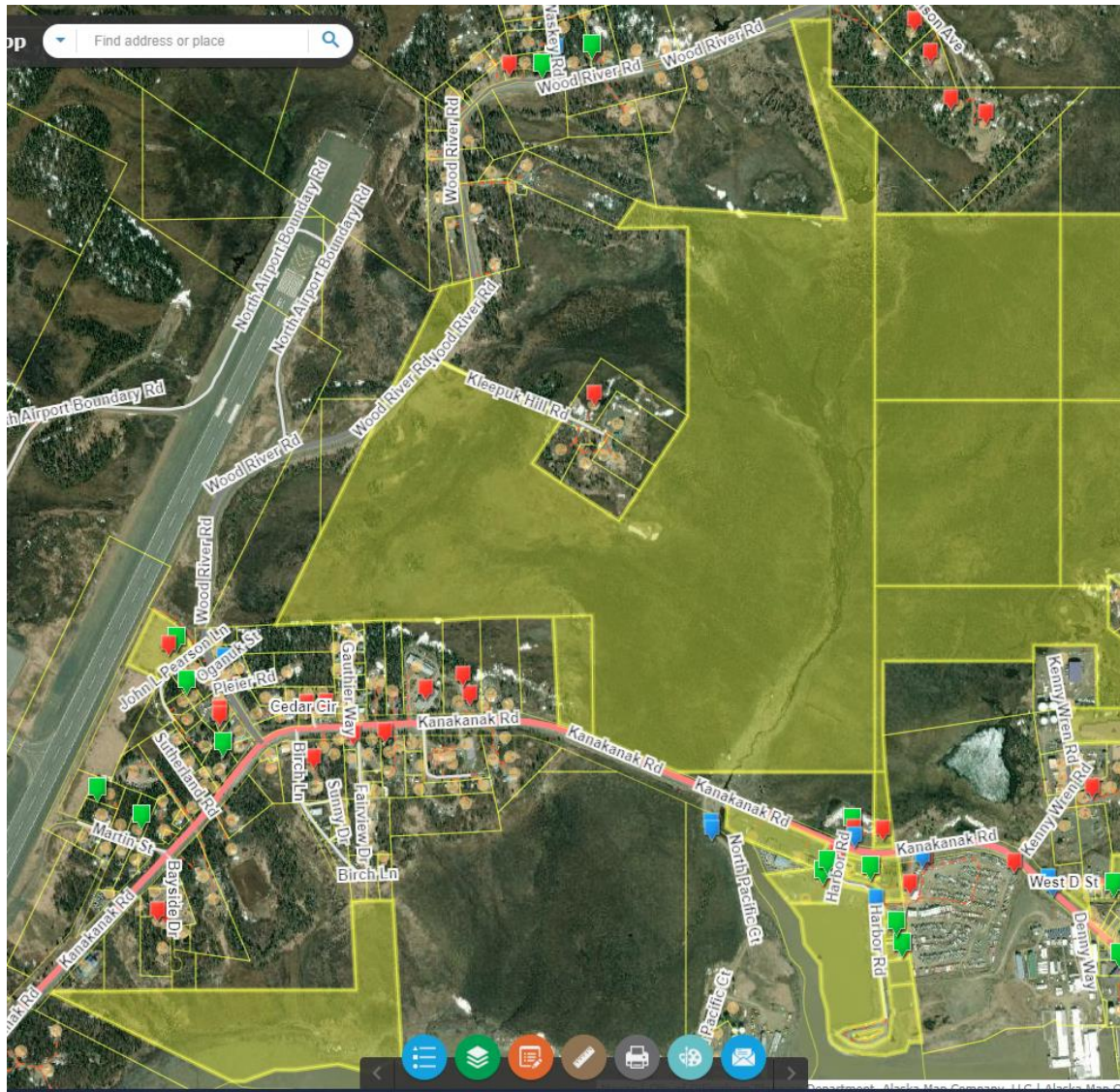
COD Owned Properties highlighted in Yellow - Downtown Area



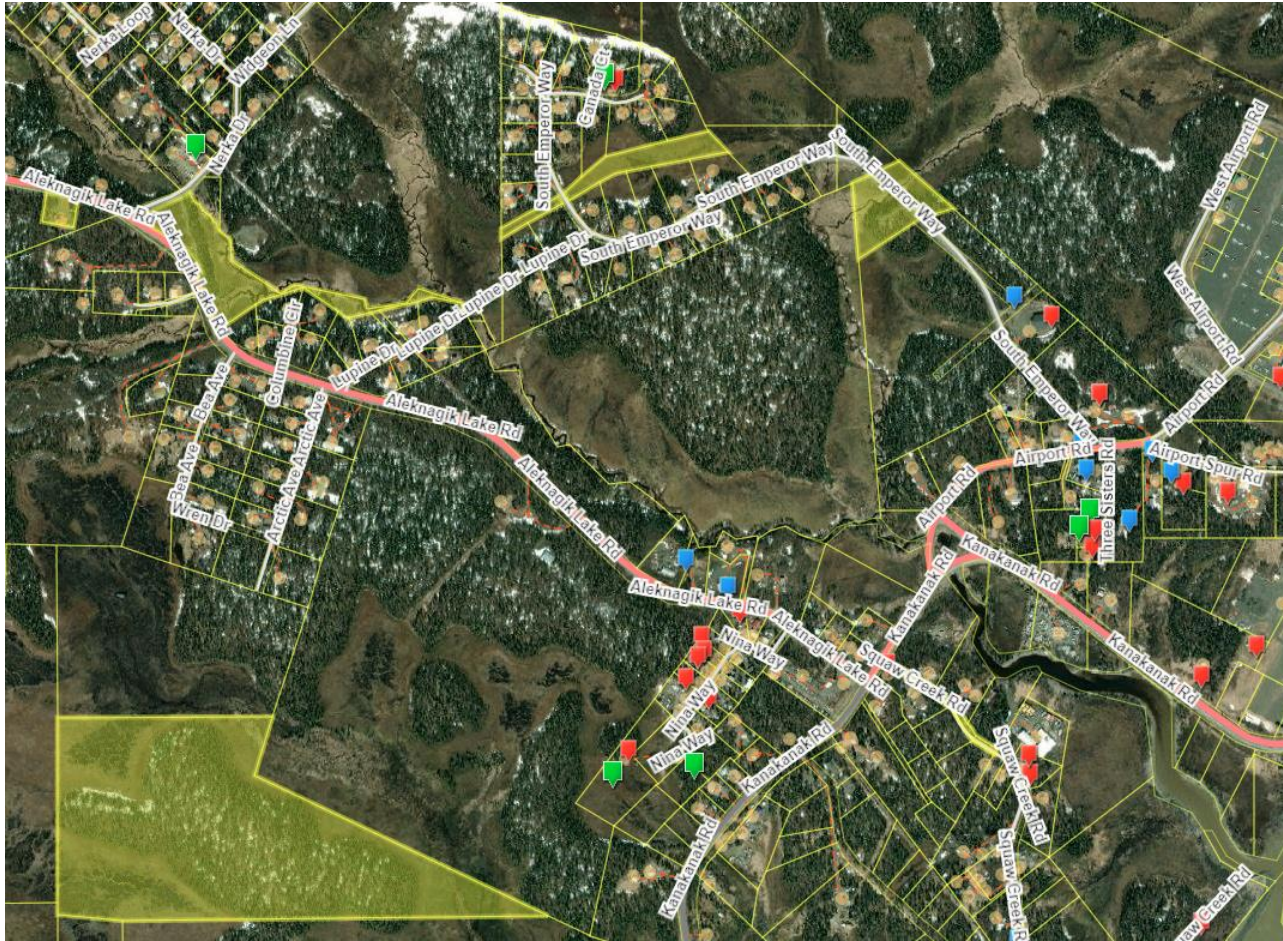
COD Owned Properties highlighted in Yellow -HUD Housing Area



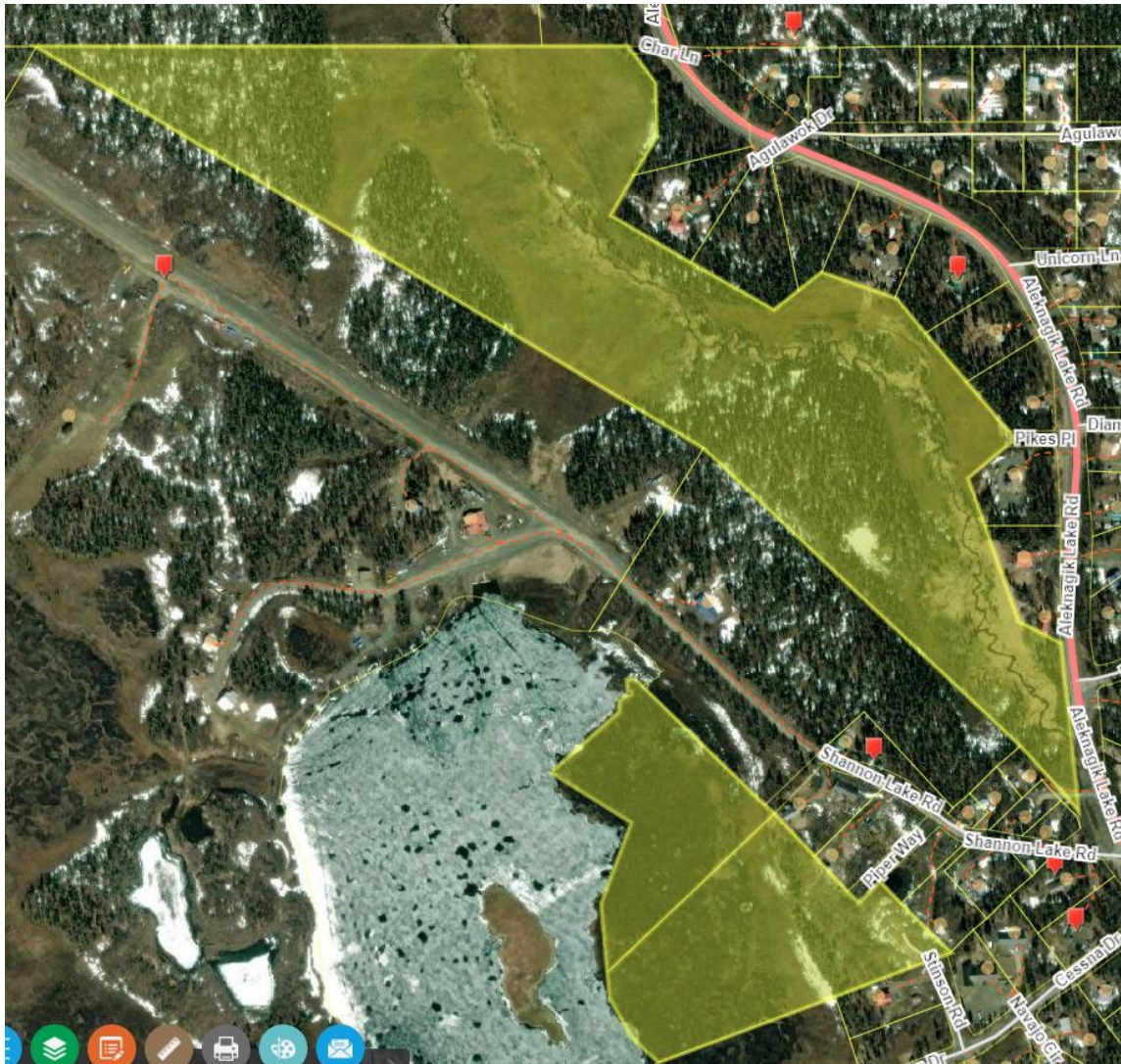
COD Owned Properties highlighted in Yellow – Flats Area



COD Owned Properties highlighted in Yellow – West of Airport



COD Owned Properties highlighted in Yellow – Shannon Pond Road



COD Owned Properties highlighted in Yellow – Ahklun Subdivision



COD Owned Properties highlighted in Yellow – Backside of Nerka, connecting to Waskey



COD Owned Properties highlighted in Yellow – Landfill Area





COD Owned Properties highlighted in Yellow – Kananak Beach Access and Water (Previous Cannery that was given to COD in 1892 by Bristol Bay Canning Company)



COD Owned Properties highlighted in Yellow – Olsonville Road Area



COD Owned Properties highlighted in Yellow – West Boundary of City Limits



As of 7/26/2023 approximately 112 parcels are known or thought to be the City of Dillingham's property. Parcels highlighted in yellow are the parcels marked as owned by the City of Dillingham.