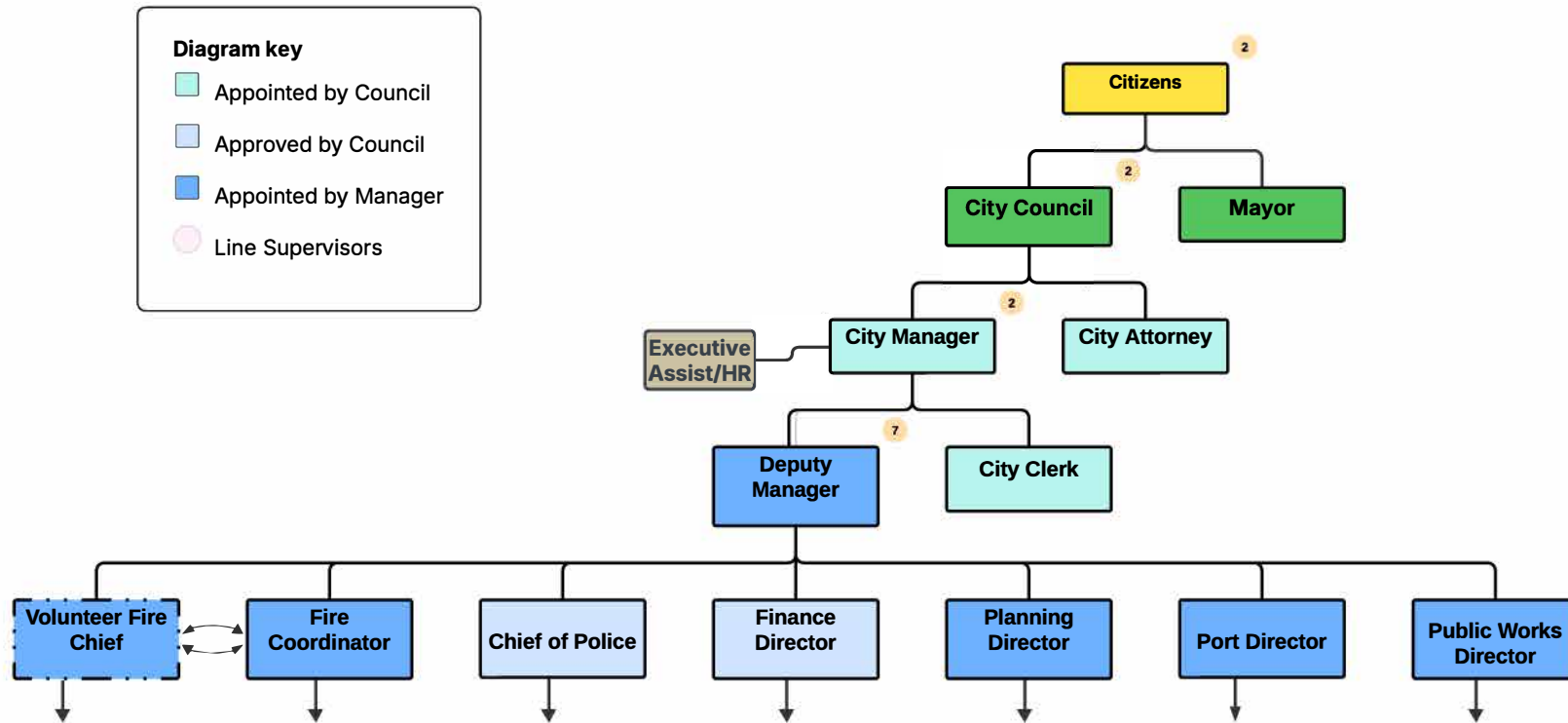


City of Dillingham Organizational Chart



City of Dillingham

Diagram key



Appointed by Council



Approved by Council







Appointed by Manager

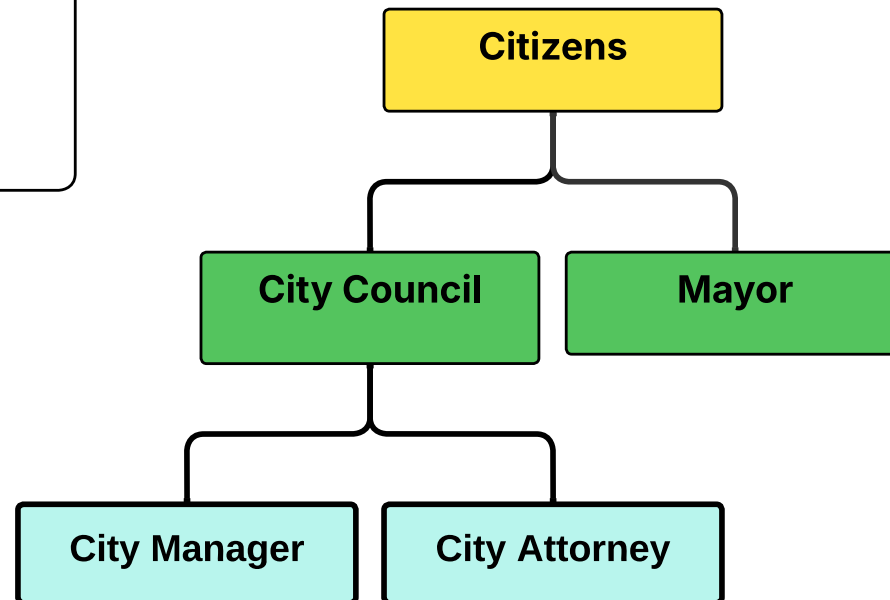


Line Supervisors

City of Dillingham
Council/Manager

Diagram key

-  Appointed by Council
-  Approved by Council
-  Appointed by Manager
-  Line Supervisors



The Deputy Manager will be responsible for the direct day to day supervision of these departments.

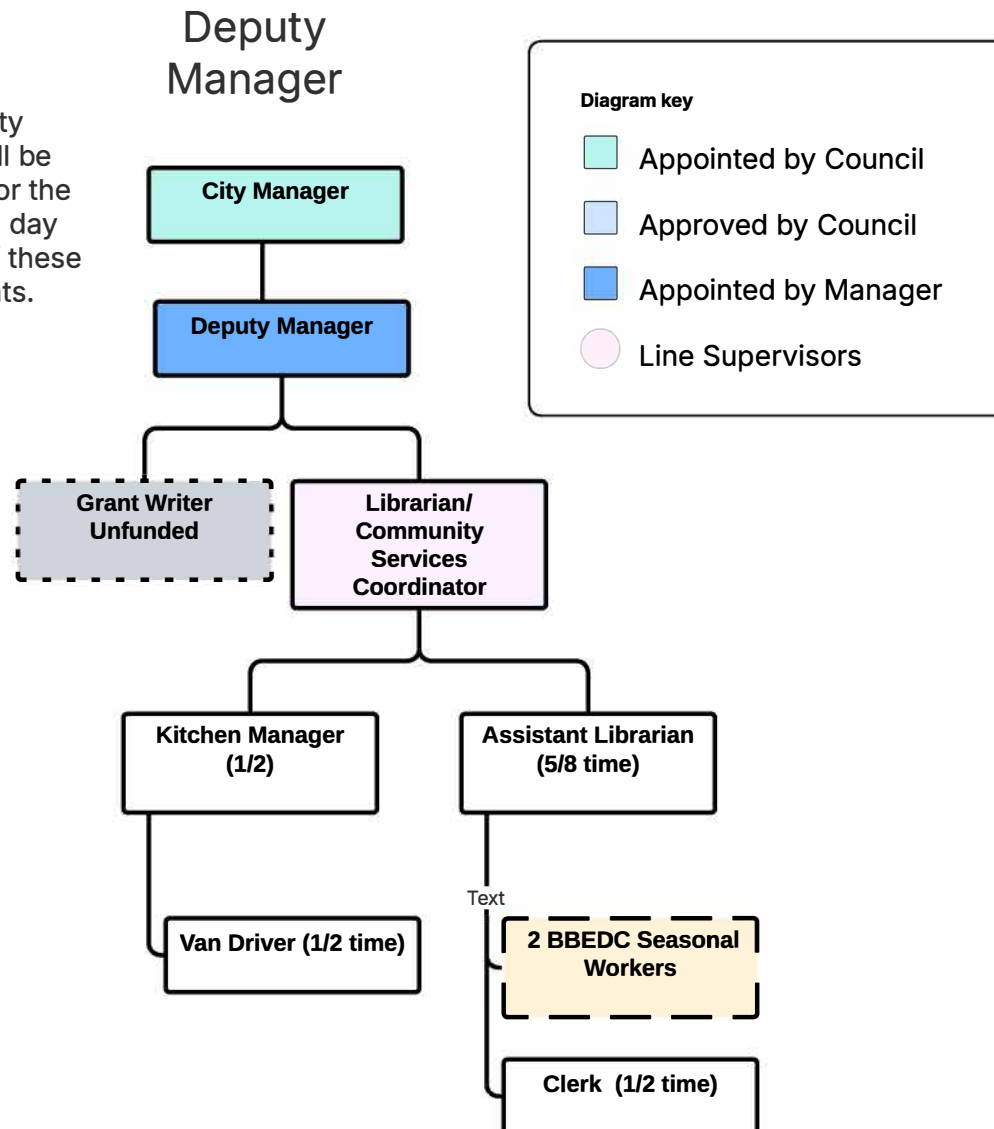




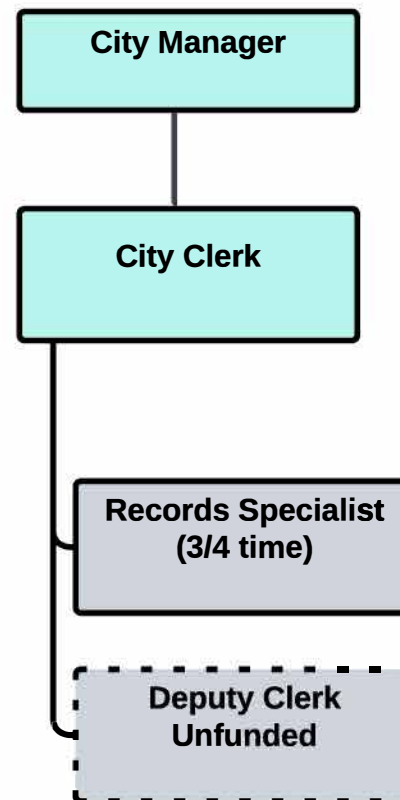


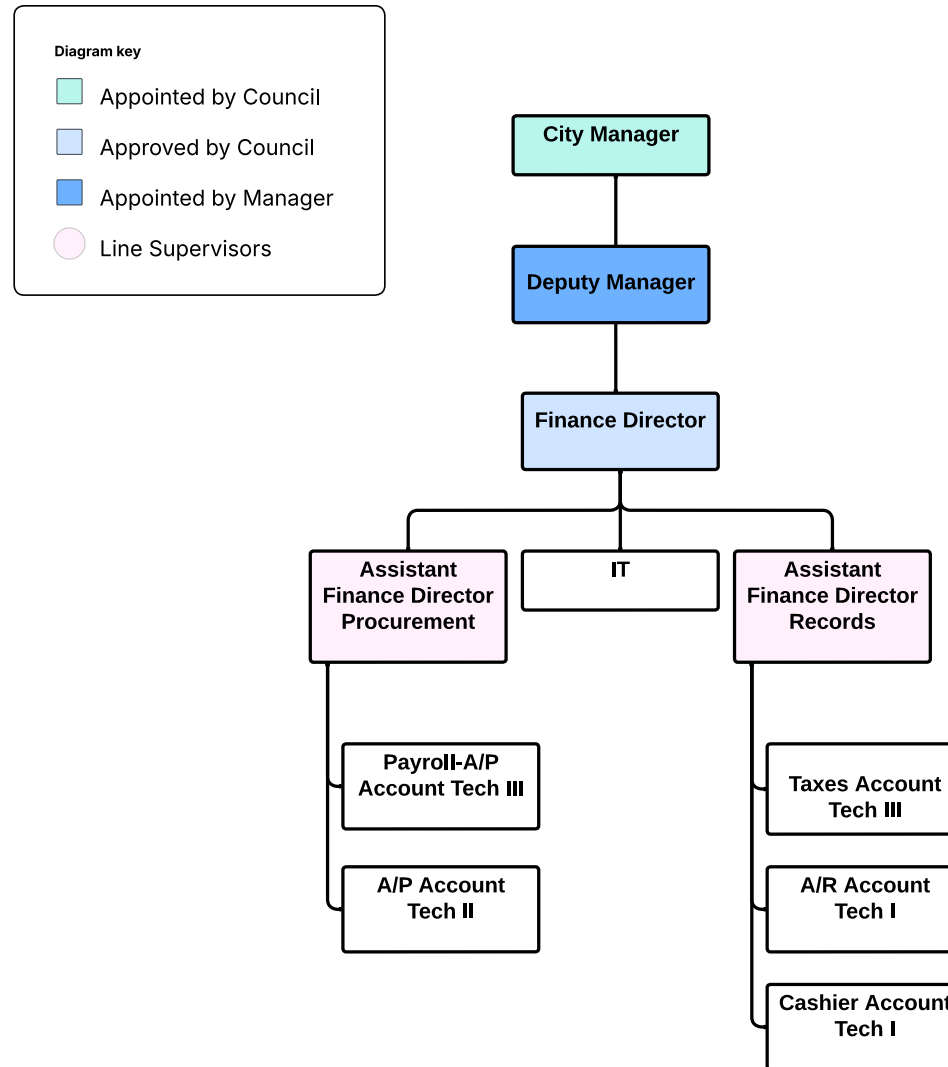
Diagram key

-  Appointed by Council
-  Approved by Council
-  Appointed by Manager
-  Line Supervisors

City Clerk



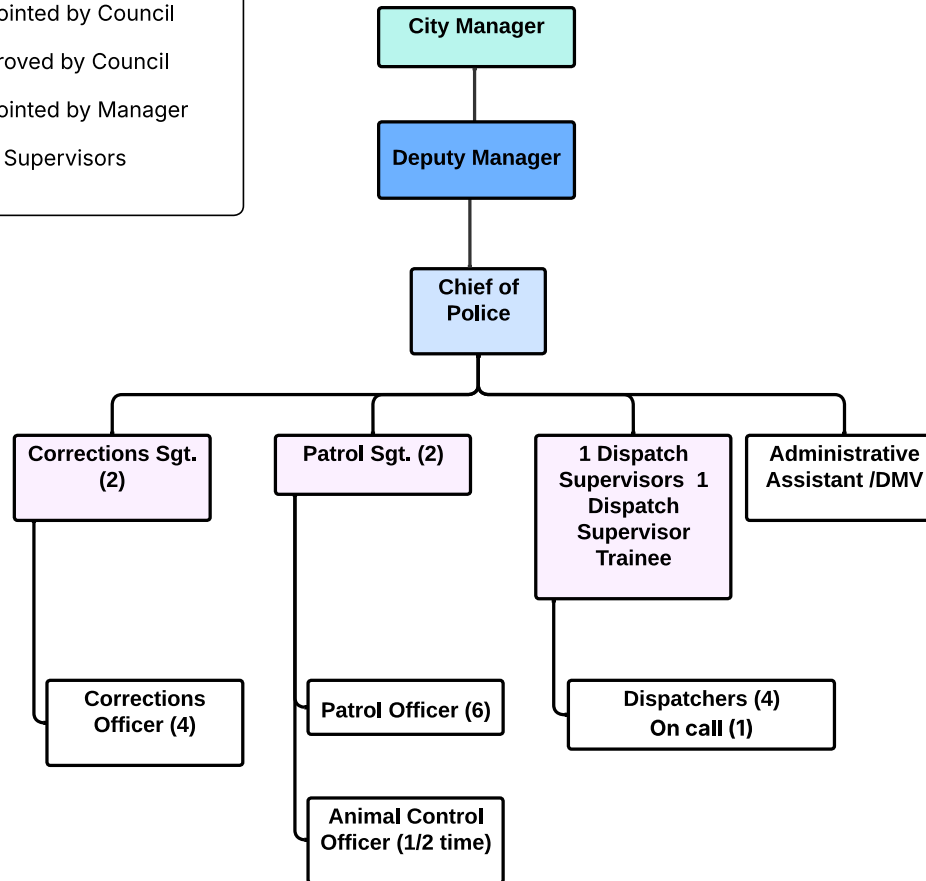
Finance



Police
Department





Diagram key

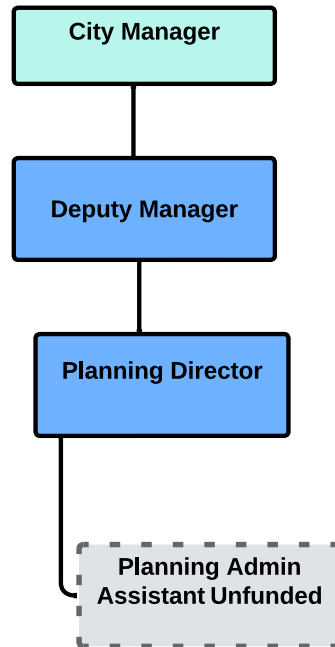
- Appointed by Council
- Approved by Council
- Appointed by Manager
- Line Supervisors



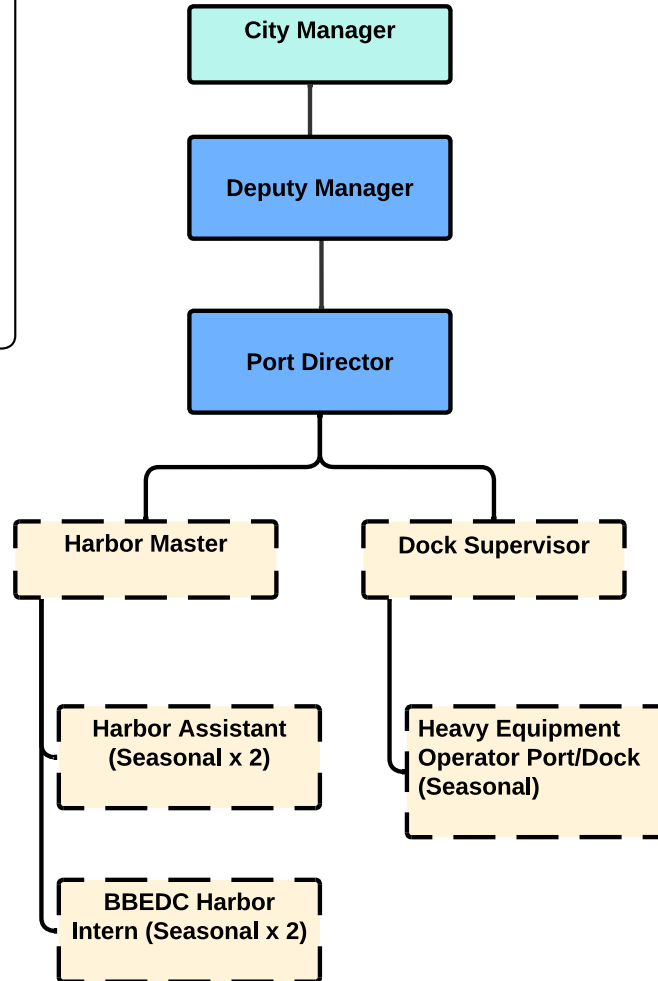
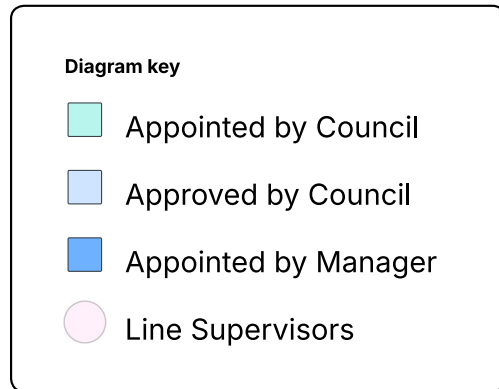
Planing Department

Diagram key

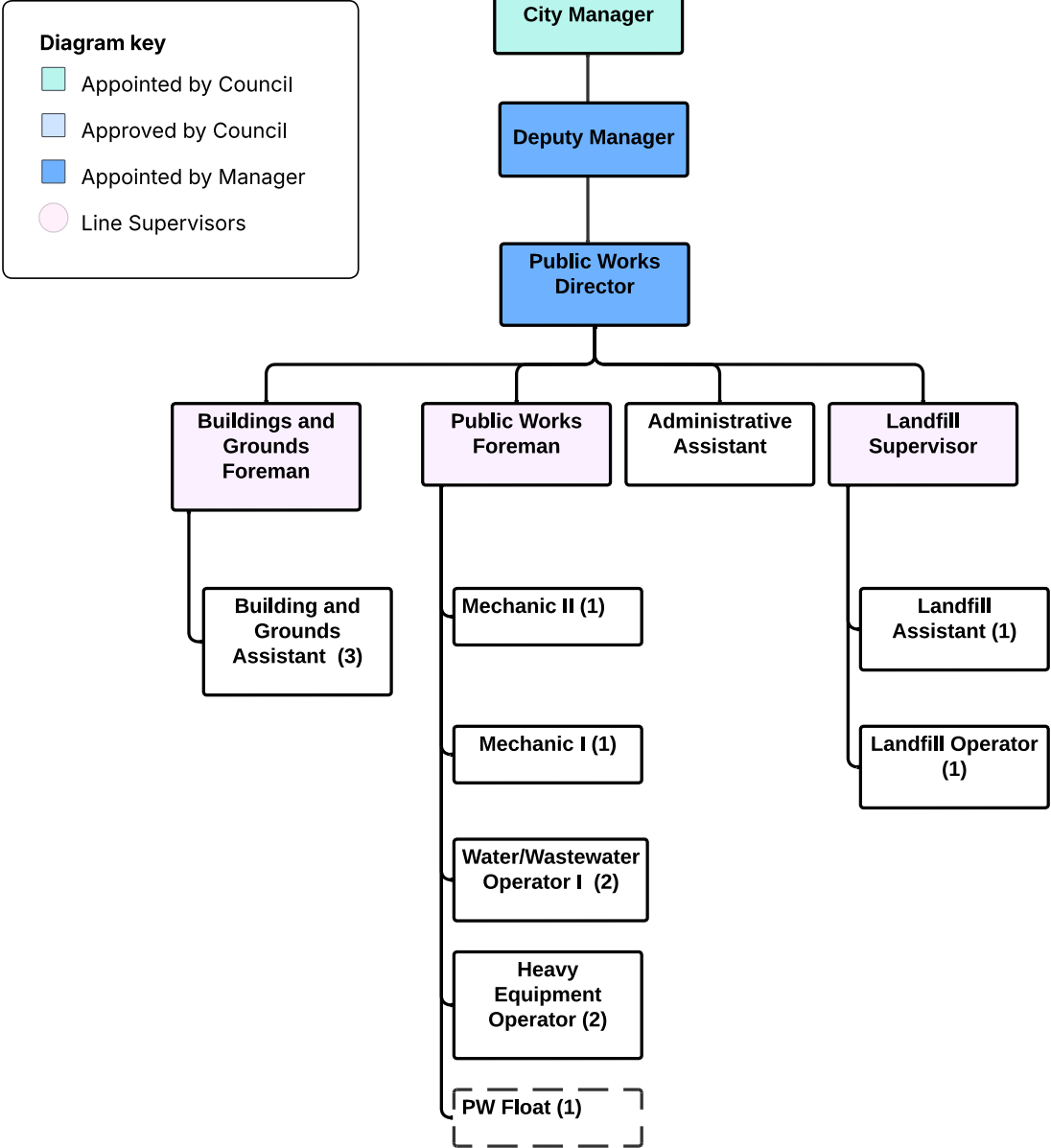
-  Appointed by Council
-  Approved by Council
-  Appointed by Manager
-  Line Supervisors



Port Department



Public
Works
Department



Fire/EMS Departments

