

**CONCEPT**  
**8/25/25**



PND Engineers, Inc. (PND) is not responsible for safety programs, methods or procedures of operation, or the construction of the design shown on these drawings. Where specifications are general or not called out, the specifications shall conform to standards of industry. Drawings are for use on this project only and are not intended for reuse without written approval from PND. Drawings are also not to be used in any manner that would constitute a detriment directly or indirectly to PND.

REV	DATE	DESCRIPTION

DATE: \_\_\_\_\_

1506 West 36th Avenue  
Anchorage, Alaska 99503  
Phone: 907.561.1011  
www.pndengineers.com  
AK. LIC# AECC250



PROJECT:

PORT OF DILLINGHAM IMPROVEMENTS

TITLE:

EXISTING OVERALL PLAN

DESIGNED BY: CC

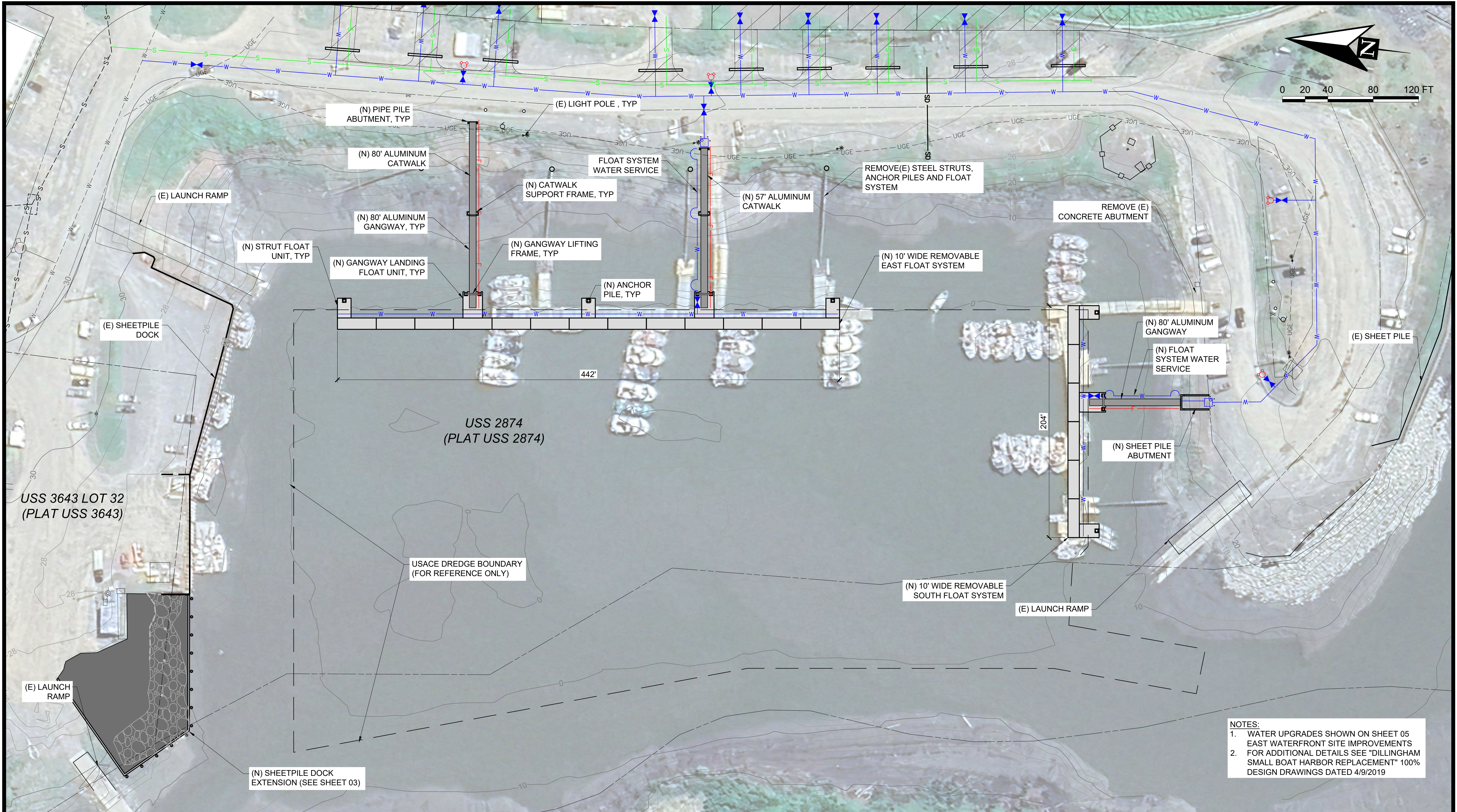
DATE: 8/25/25

SHEET NO: 1 OF 5

CHECKED BY: DST

PROJECT NO: 251085





NOTES:  
1. WATER UPGRADES SHOWN ON SHEET 05  
EAST WATERFRONT SITE IMPROVEMENTS  
2. FOR ADDITIONAL DETAILS SEE "DILLINGHAM  
SMALL BOAT HARBOR REPLACEMENT" 100%  
DESIGN DRAWINGS DATED 4/9/2019

CONCEPT  
8/25/25



PND Engineers, Inc. (PND) is not responsible for safety programs, methods or procedures of operation, or the construction of the design shown on these drawings. Where specifications are general or not called out, the specifications shall conform to standards of industry. Drawings are for use on this project only and are not intended for reuse without written approval from PND. Drawings are also not to be used in any manner that would constitute a detriment directly or indirectly to PND.

REV	DATE	DESCRIPTION

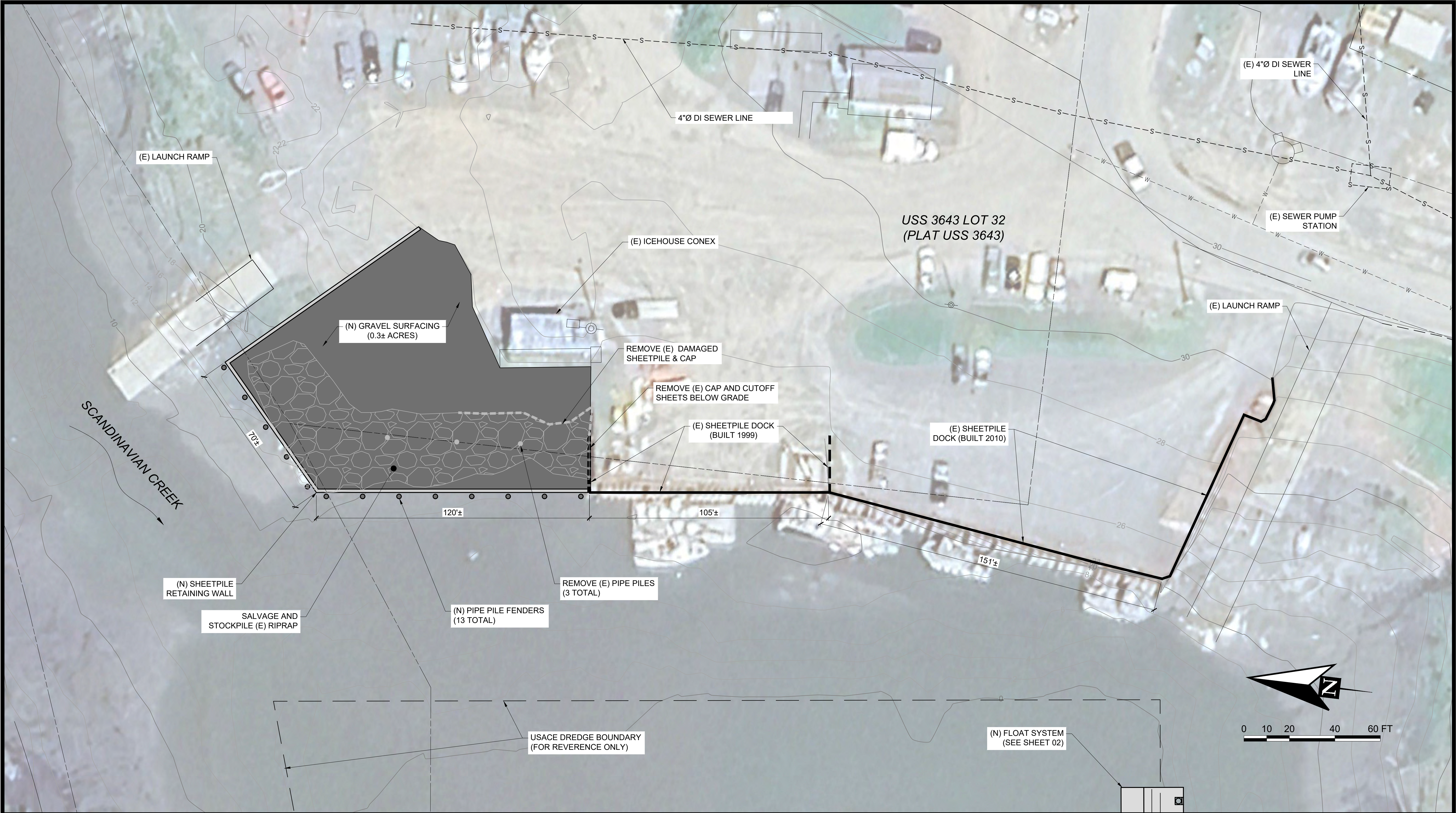
DATE: \_\_\_\_\_

1506 West 36th Avenue  
Anchorage, Alaska 99503  
Phone: 907.561.1011  
www.pndengineers.com  
AK. LIC# AECC250



PROJECT: PORT OF DILLINGHAM IMPROVEMENTS			
TITLE: HARBOR FLOAT REPLACEMENT			
DESIGNED BY: CC	DATE: 8/25/25	SHEET NO: 02 OF 5	
CHECKED BY: DST	PROJECT NO: 251085		





**CONCEPT**  
**8/25/25**



PND Engineers, Inc. (PND) is not responsible for safety programs, methods or procedures of operation, or the construction of the design shown on these drawings. Where specifications are general or not called out, the specifications shall conform to standards of industry. Drawings are for use on this project only and are not intended for reuse without written approval from PND. Drawings are also not to be used in any manner that would constitute a detriment directly or indirectly to PND.

REV	DATE	DESCRIPTION

DATE: \_\_\_\_\_

1506 West 36th Avenue  
Anchorage, Alaska 99503  
Phone: 907.561.1011  
www.pndengineers.com  
AK. LIC# AECC250

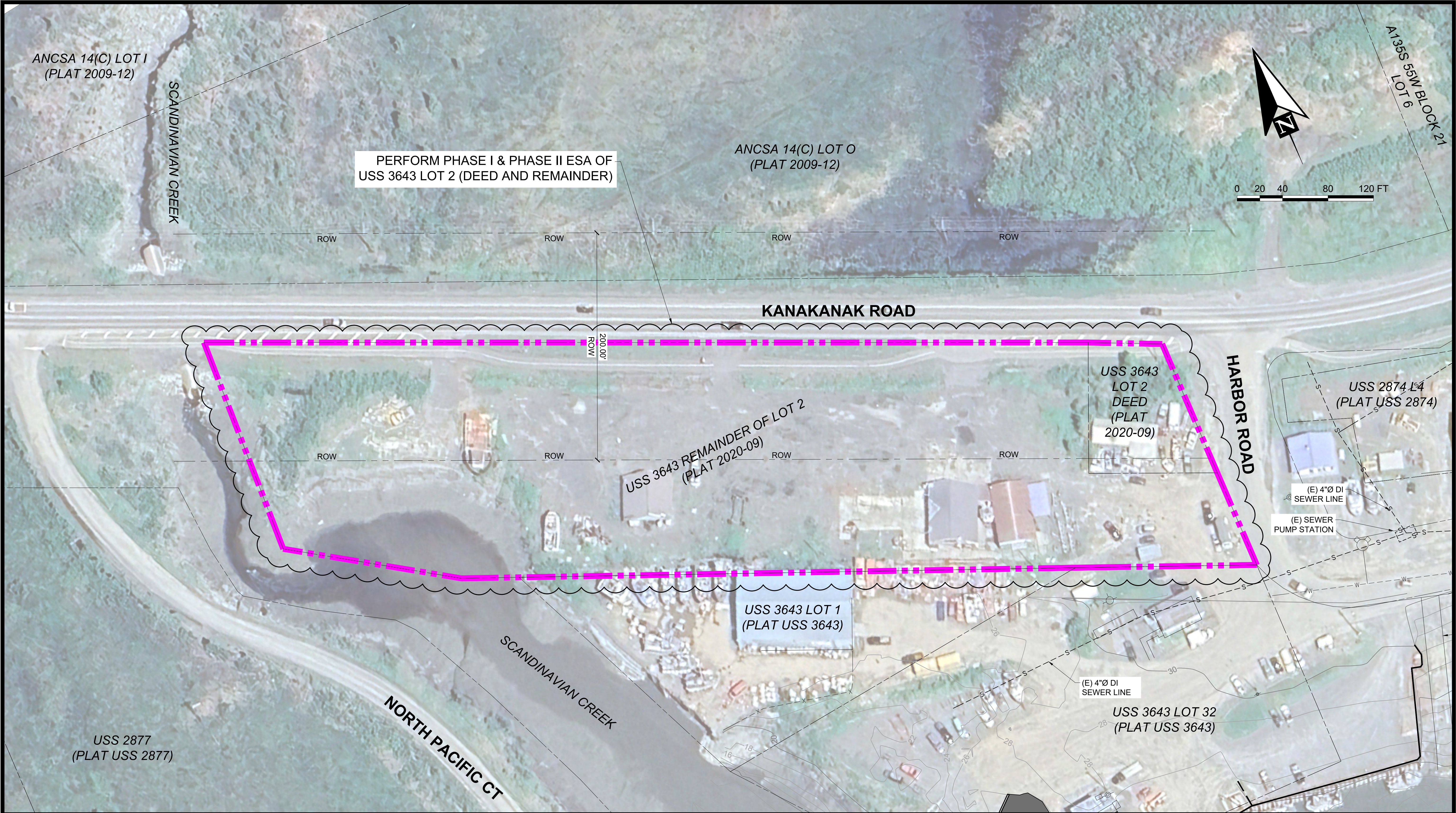


PROJECT:  
**PORT OF DILLINGHAM IMPROVEMENTS**

TITLE:  
**NORTH BULKHEAD EXTENSION**

DESIGNED BY:	CC	DATE:	8/25/25	SHEET NO: <b>03</b> OF <b>5</b>
CHECKED BY:	DST	PROJECT NO:	251085	





**CONCEPT**  
**8/25/25**



PND Engineers, Inc. (PND) is not responsible for safety programs, methods or procedures of operation, or the construction of the design shown on these drawings. Where specifications are general or not called out, the specifications shall conform to standards of industry. Drawings are for use on this project only and are not intended for reuse without written approval from PND. Drawings are also not to be used in any manner that would constitute a detriment directly or indirectly to PND.

REV	DATE	DESCRIPTION

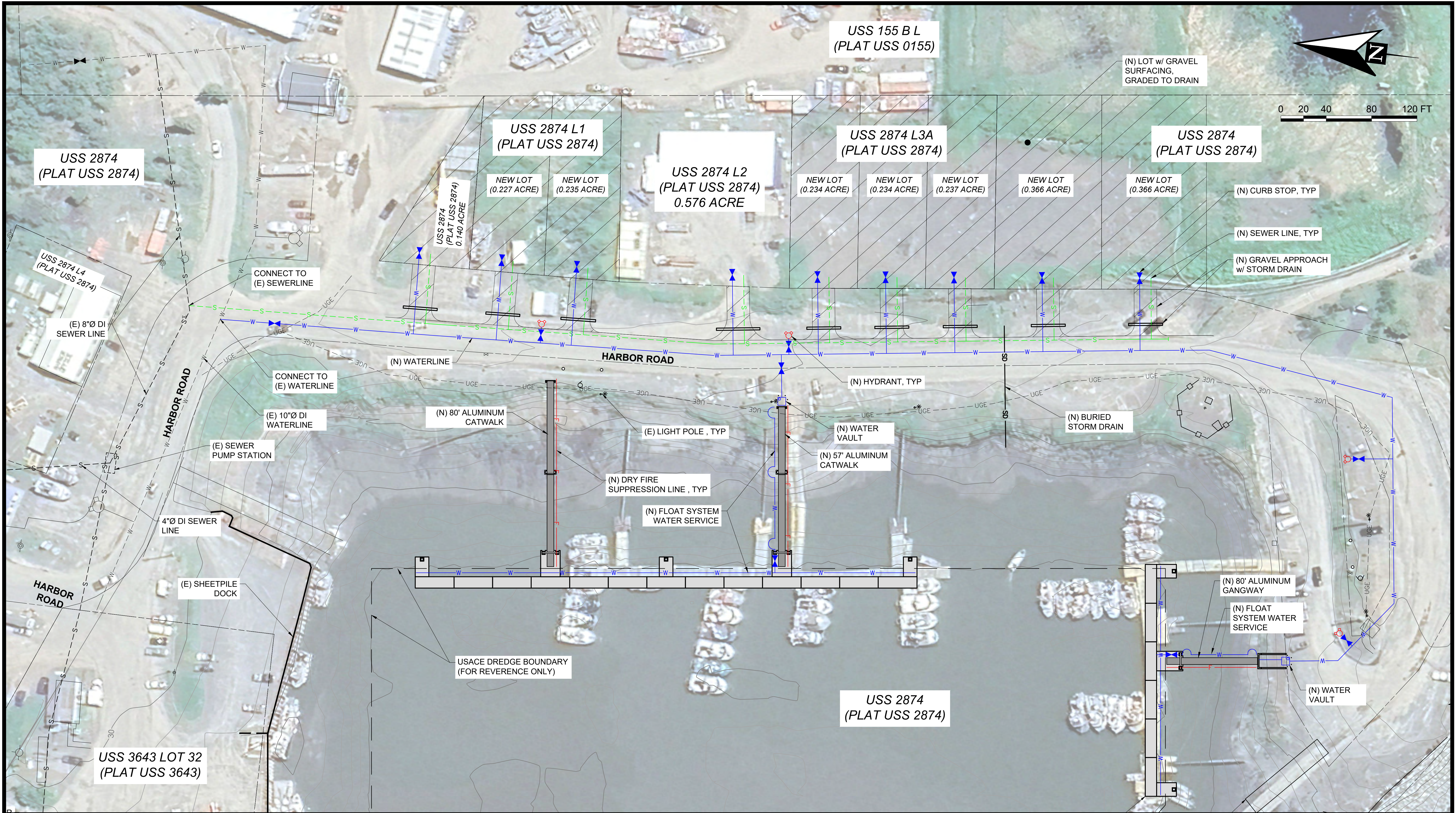
DATE: \_\_\_\_\_

1506 West 36th Avenue  
Anchorage, Alaska 99503  
Phone: 907.561.1011  
www.pndengineers.com  
AK LIC# AECC250



PROJECT: <b>PORT OF DILLINGHAM IMPROVEMENTS</b>		
TITLE: <b>BINGMAN PROPERTY ESA</b>		
DESIGNED BY: CC	DATE: 8/25/25	SHEET NO: <b>04</b> OF <b>5</b>
CHECKED BY: DST	PROJECT NO: 251085	





**CONCEPT**  
**8/25/25**

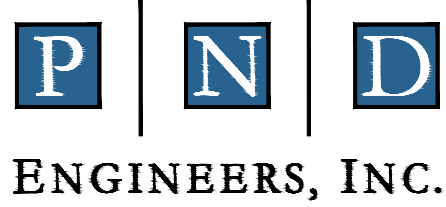


PND Engineers, Inc. (PND) is not responsible for safety programs, methods or procedures of operation, or the construction of the design shown on these drawings. Where specifications are general or not called out, the specifications shall conform to standards of industry. Drawings are for use on this project only and are not intended for reuse without written approval from PND. Drawings are also not to be used in any manner that would constitute a detriment directly or indirectly to PND.

REV	DATE	DESCRIPTION

DATE: \_\_\_\_\_

1506 West 36th Avenue  
Anchorage, Alaska 99503  
Phone: 907.561.1011  
www.pndengineers.com  
AK. LIC# AECC250



PROJECT: <b>PORT OF DILLINGHAM IMPROVEMENTS</b>	
TITLE: <b>EAST WATERFRONT SITE IMPROVEMENTS</b>	
DESIGNED BY: CC	DATE: 8/25/25
CHECKED BY: DST	PROJECT NO: 251085
SHEET NO: <b>05</b> OF <b>5</b>	