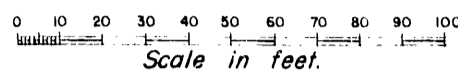


U. S. SURVEY No. 1739

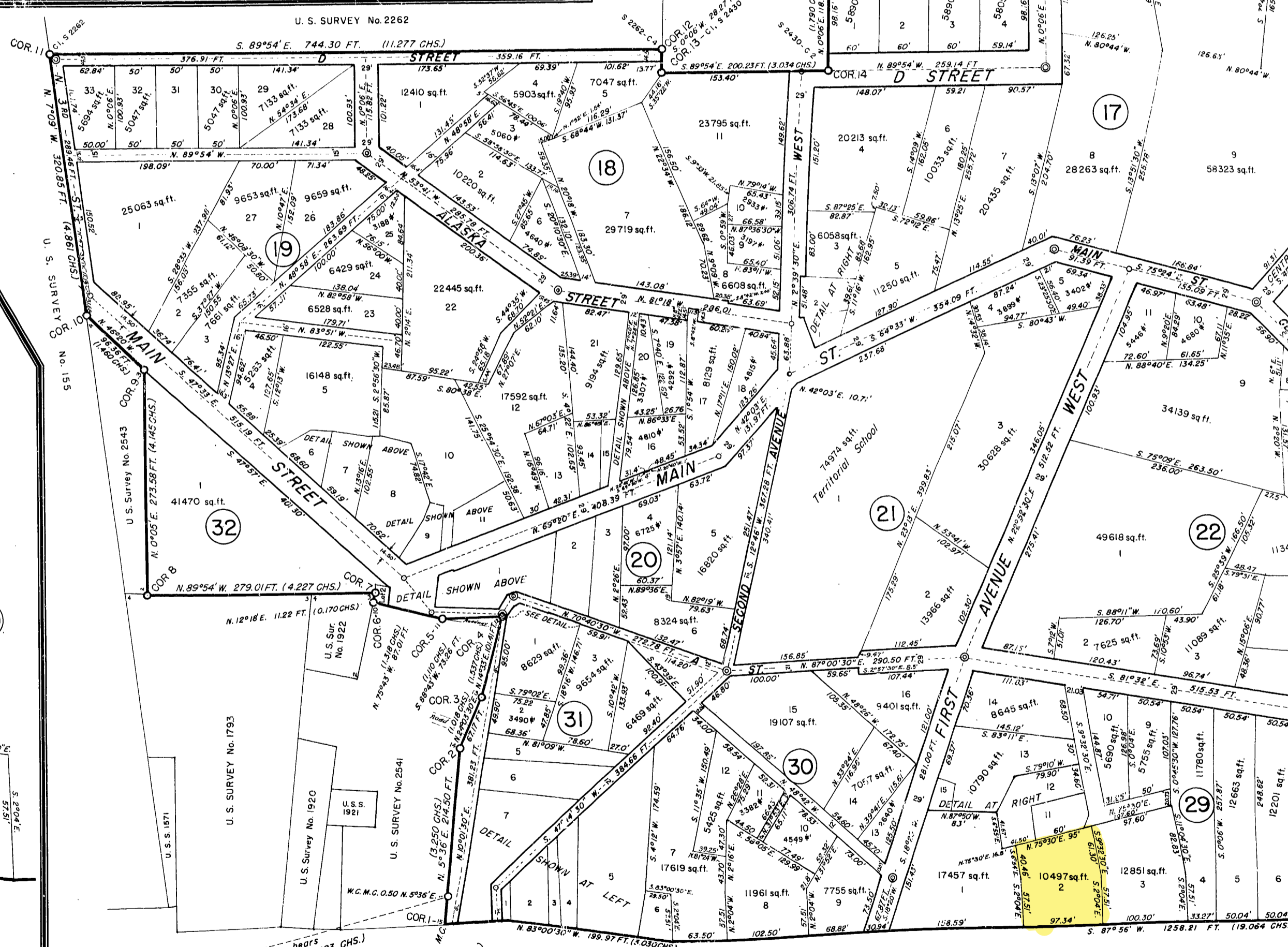
U. S. SURVEY No. 1922

U. S. SURVEY No. 2541



Detail, portions of Blocks 19, 20, 31 & 32.

U. S. SURVEY No. 2262

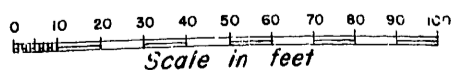


S. 2541, C. 14 - COR. 2

U. S. SURVEY No. 2541

W.C.M.C. 1

NUSHAGAK RIVER



Detail, portions of Blocks 30 & 31.

U. S. I. M. No. 13 A bears
S. 75°31'51" W. 3510.72 FT. (53.193 CHS.)

NUSHAGAK RIVER