



[ADF&G Home](#) » [Fishing](#) » [Commercial](#) » [Information By Fishery](#) » [Salmon](#)

Commercial Salmon Fishery Exvessel Prices

by Area and Species

If a login screen appears below, please try refreshing the webpage using your browser's refresh button.

Area Name **Bristol Bay**

Average Exvessel Price per Pound					
Year ▲▼	Pink	Chum	Coho	Chinook	Sockeye
2020	\$0.09	\$0.30	\$0.80	\$0.92	\$1.09
2019	\$0.10	\$0.33	\$0.70	\$0.83	\$1.54
2018	\$0.27	\$0.37	\$0.68	\$1.02	\$1.60
2017	\$0.15	\$0.29	\$0.70	\$0.94	\$1.31
2016	\$0.18	\$0.30	\$0.58	\$0.84	\$0.96
2015	\$0.06	\$0.30	\$0.39	\$0.56	\$0.64
2014	\$0.24	\$0.41	\$0.84	\$1.32	\$1.35
2013	\$0.14	\$0.30	\$0.79	\$1.48	\$1.61
2012	\$0.39	\$0.34	\$0.55	\$1.31	\$1.18
2011	\$0.29	\$0.37	\$0.74	\$1.04	\$1.17
2010	\$0.36	\$0.28	\$0.66	\$1.18	\$1.07
2009	\$0.07	\$0.17	\$0.56	\$0.89	\$0.80
2008	\$0.17	\$0.17	\$0.55	\$0.83	\$0.75
2007		\$0.13	\$0.41	\$0.64	\$0.67

Refresh - Print - Export

[Salmon Exvessel Prices by Area](#) | [Salmon Wholesale Prices](#) | [Statewide Salmon Exvessel Prices](#)

Data Source: OCEANAK ADF&G COAR Buying Subject Area. Confidential prices are omitted. These data may include harvest attributed to hatchery cost recovery, educational, derby, experimental or test fishing.

Prices from Commercial Operator's Annual Reports. The first buyer of raw fish, persons who catch and process fish, persons who catch and have fish processed by another business, and the first exporter of a fishery resource are required to file an annual report of their purchasing and processing activities. This report is called the Commercial Operator's Annual Report (COAR) and is due by April 1 of the following year. The National Marine Fisheries Service also requires COAR reports from processing vessels operating in federal waters of the Exclusive Economic Zone. The COAR reports contain data on seafood purchasing, production, and both exvessel and wholesale values of seafood products. The buying information from COAR is reported by species, area of purchase, condition of fisheries resources at the time of purchase, type of gear used in the harvest, pounds purchased, and exvessel value.

Exvessel average prices are reported in nominal dollars and have not been adjusted for inflation.

The exvessel value in COAR includes any post-season adjustments or bonuses paid after the fish was purchased. Prices represent a weighted average price per pound by species and area. Prices may reflect a mixture of gear types and delivery conditions.

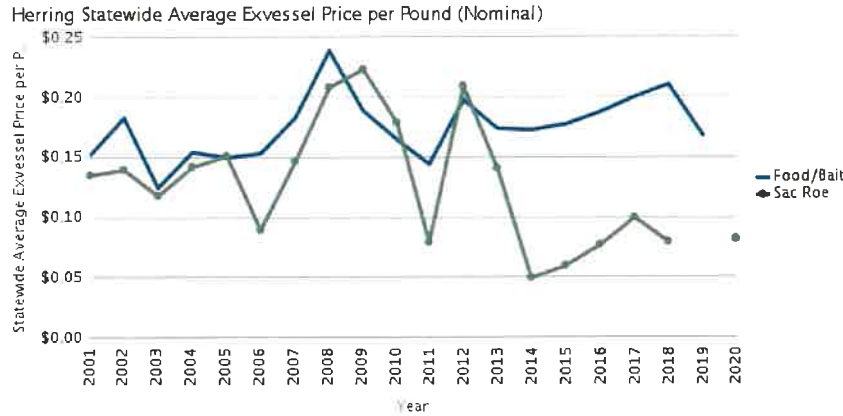
Any dissemination of the data must credit ADF&G as the source, with a disclaimer that exonerates the department for errors or deficiencies in reproduction, subsequent analysis, or interpretation.

For questions concerning this data please email dfg.dcf.info@alaska.gov.



Commercial Herring Fishery Exvessel Prices Statewide

If a login screen appears below, please try refreshing the webpage using your browser's refresh button.



Average
 $= .1925$
 $\times 4\%$
 $= .0077$

Year	Food/Bait	Sac Roe
2020		\$0.08
2019	\$0.17	
2018	\$0.21	\$0.08
2017	\$0.20	\$0.10
2016	\$0.19	\$0.08
2015	\$0.18	\$0.06
2014	\$0.17	\$0.05
2013	\$0.17	\$0.14
2012	\$0.20	\$0.21
2011	\$0.14	\$0.08
2010	\$0.17	\$0.18
2009	\$0.19	\$0.22
2008	\$0.24	\$0.21
2007	\$0.18	\$0.15

Refresh - Print - Export

Data Source: OCEANAK ADF&G COAR Buying Subject Area. Confidential prices are omitted.

Prices from Commercial Operator's Annual Reports. The first buyer of raw fish, persons who catch and process fish, persons who catch and have fish processed by another business, and the first exporter of a fishery resource are required to file an annual report of their purchasing and processing activities. This report is called the Commercial Operator's Annual Report (COAR) and is due by April 1 of the following year. The National Marine Fisheries Service also requires COAR reports from processing vessels operating in federal waters of the Exclusive Economic Zone. The COAR reports contain data on seafood purchasing, production, and both exvessel and wholesale values of seafood products. The buying information from COAR is reported by species, area of purchase, condition of fisheries resources at the time of purchase, type of gear used in the harvest, pounds purchased, and exvessel value. Exvessel average prices are reported in nominal dollars and have not been adjusted for inflation. The exvessel value in COAR includes any post-season adjustments or bonuses paid after the fish was purchased. Prices represent a weighted statewide average price per pound by species. Prices may reflect a mixture of gear types and delivery conditions. Any dissemination of the data must credit ADF&G as the source, with a disclaimer that exonerates the department for errors or deficiencies in reproduction, subsequent analysis, or interpretation.

For questions concerning this data please email dfg.dcf.info@alaska.gov.

