

EXISTING UNDERGROUND UTILITY LINES ARE SHOWN ON THE DRAWING BASED UPON THE BEST INFORMATION AVAILABLE TO THE ENGINEER. THE ENGINEER CAN NOT AND DOES NOT WARRANT THAT THIS INFORMATION IS COMPLETE OR ACCURATE. THE CONTRACTOR MUST CALL BY MIN 11 UTILITY LOCATED AND PHYSICALLY LOCATE AND VERTICALLY VERIFY LOCATIONS OF ALL UTILITIES.

CHINICHE
ENGINEERS & SURVEYORS

407 Hwy. 90
Bay St. Louis, MS, 39520

Office - (228) 467-6755
Email - jason@chic-engineers.com
Website - www.chic-engineers.com

OWNER INFORMATION

CITY OF DIAMONDHEAD
5000 DIAMONDHEAD CIRCLE
DIAMONDHEAD, MS 39525

SHEET TITLE

NOMA DRIVE WATERFRONT
IMPROVEMENTS - PHASE I
ROAD IMPROVEMENTS PLAN

PRELIMINARY FOR REVIEW

NAME	DATE	DESCRIPTION

SHEET NUMBER
6

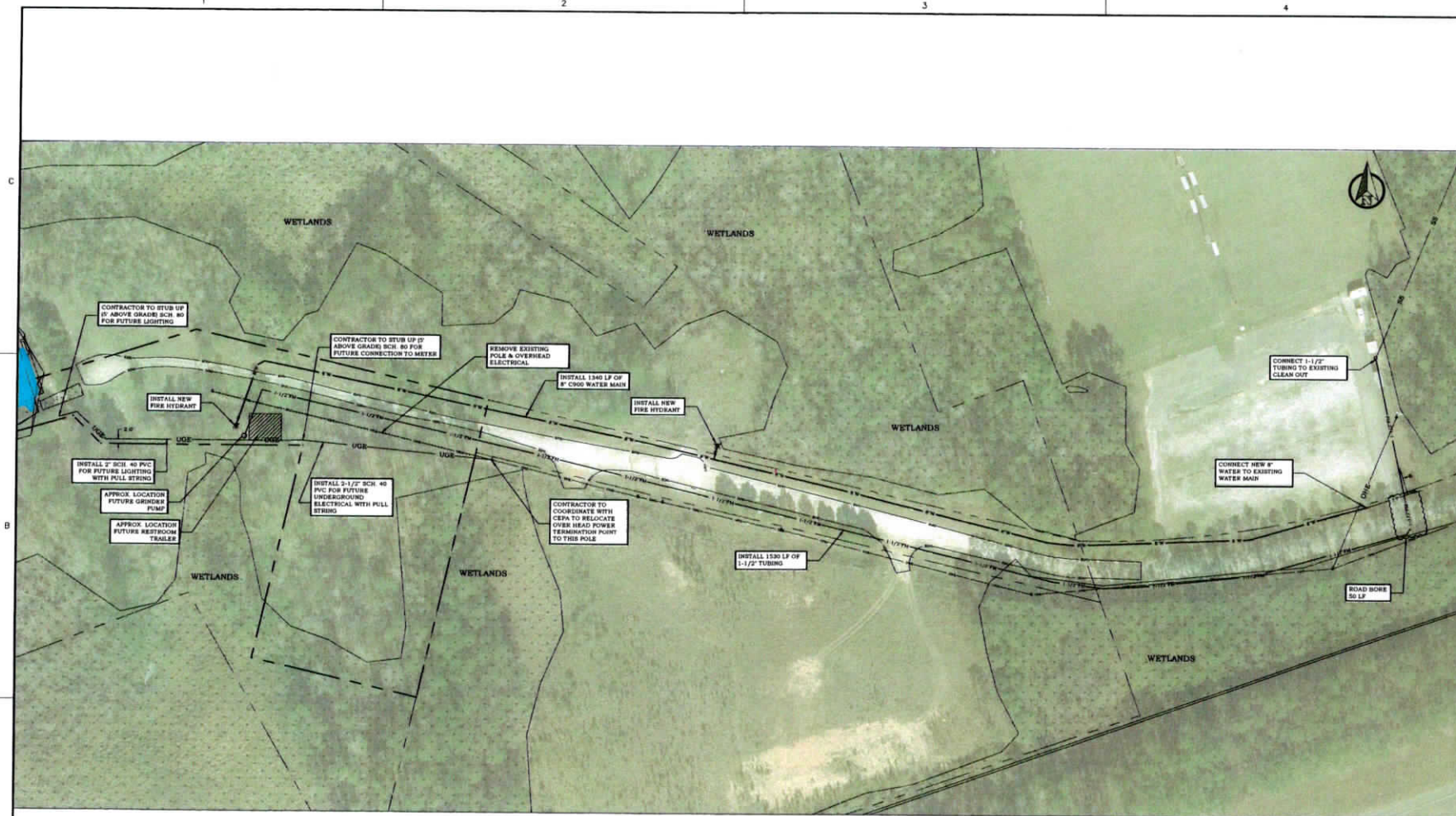
SHEET DESIGNATION
C-112

OWNER INFORMATION
CITY OF DIAMONDHEAD
5000 DIAMONDHEAD CIRCLE
DIAMONDHEAD, MS 39525

SHEET TITLE
NOMA DRIVE WATERFRONT
IMPROVEMENTS - PHASE I
UTILITY PLAN

PRELIMINARY FOR REVIEW

NO.	DATE	DESCRIPTION
1	11-28-20	PROJECT NO. 17-08-06-01
2	12-14-20	DATE
3		DRAWN BY: JH
4		CHECKED BY: JH
5		SCALE: 1"=40'
SHEET NUMBER		
5		
SHEET DESIGNATION		
C-111		



PROPOSED UTILITY PLAN
SCALE: 1"=40'

EXISTING UNDERGROUND UTILITY LINES ARE SHOWN ON THE DRAWINGS BASED UPON THE BEST INFORMATION AVAILABLE TO THE ENGINEER. THE ENGINEER CAN NOT AND DOES NOT WARRANT THAT THIS INFORMATION IS COMPLETE OR ACCURATE. THE CONTRACTOR MUST CALL IN MISSI UTILITY LOCATES AND PHYSICALLY LOCATE AND VISUALLY VERIFY LOCATION OF ALL UTILITIES.