

EXHIBIT A



CERTIFICATE: This is to certify that I have made a survey of the following described property and that said survey is true and correct to the best of my knowledge and belief.

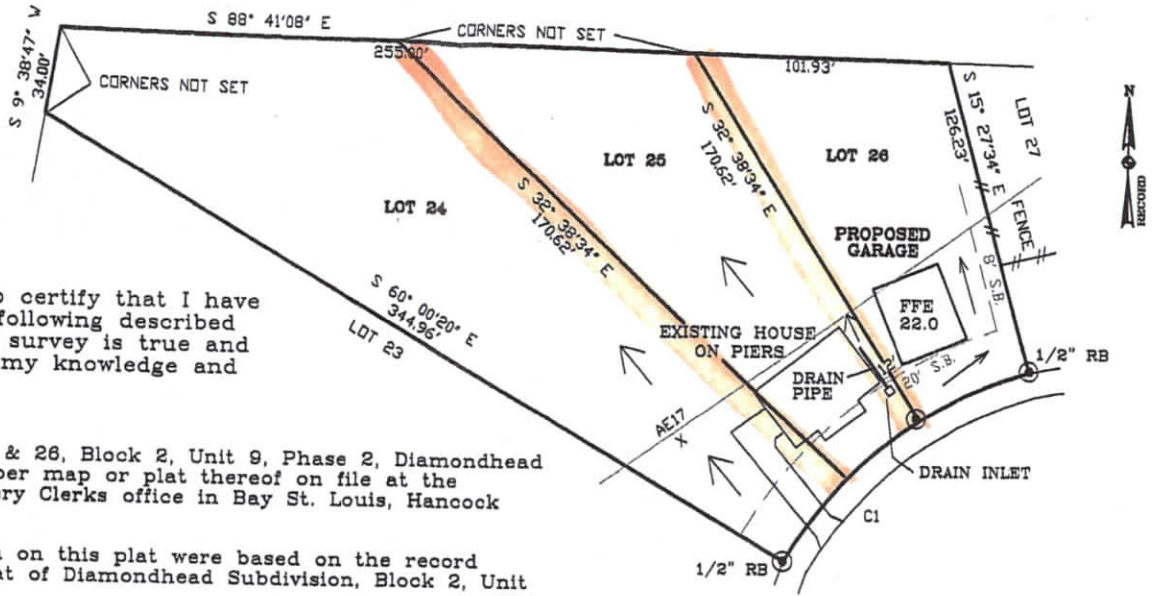
DESCRIPTION: Lot 24, 25 & 26, Block 2, Unit 9, Phase 2, Diamondhead Subdivision, Phase 2, as per map or plat thereof on file at the Courthouse in the Chancery Clerks office in Bay St. Louis, Hancock County, Mississippi.

NOTE: All bearings shown on this plat were based on the record bearing of the Official Plat of Diamondhead Subdivision, Block 2, Unit 9, Phase 2.

REFERENCE MATERIAL:

- 1) Official Plat of Diamondhead Subdivision, Block 2, Unit 9, Phase 2.

- © F.I.P. Found (as listed)
- S.I.P. Set 1/2" Rebar



SWALE

DRAINAGE DIRECTION

PROPERTY LINE CURVE DATA				
CURVE	RADIUS	LENGTH	CHORD	BEARING
C1	165.00'	127.40'	75.15'	S08°11'28"E



HATTAWAY ENGINEERING INC.			
P.O. BOX 363			
CARRIERE, MISSISSIPPI 39426			
SCALE: 1" = 50'	APPROVED BY:	DRAWN BY: DLH	
DATE: 09/01/20	DAVID L. HATTAWAY	CLASS "B" SURVEY	
SURVEY FOR: CARL BOYANTON			
DAVID L. HATTAWAY, P.E. 12611		DRAWING NUMBER	
P.L.S. 3018		SUB/ DIAMONDHEAD/ LOT24-26	