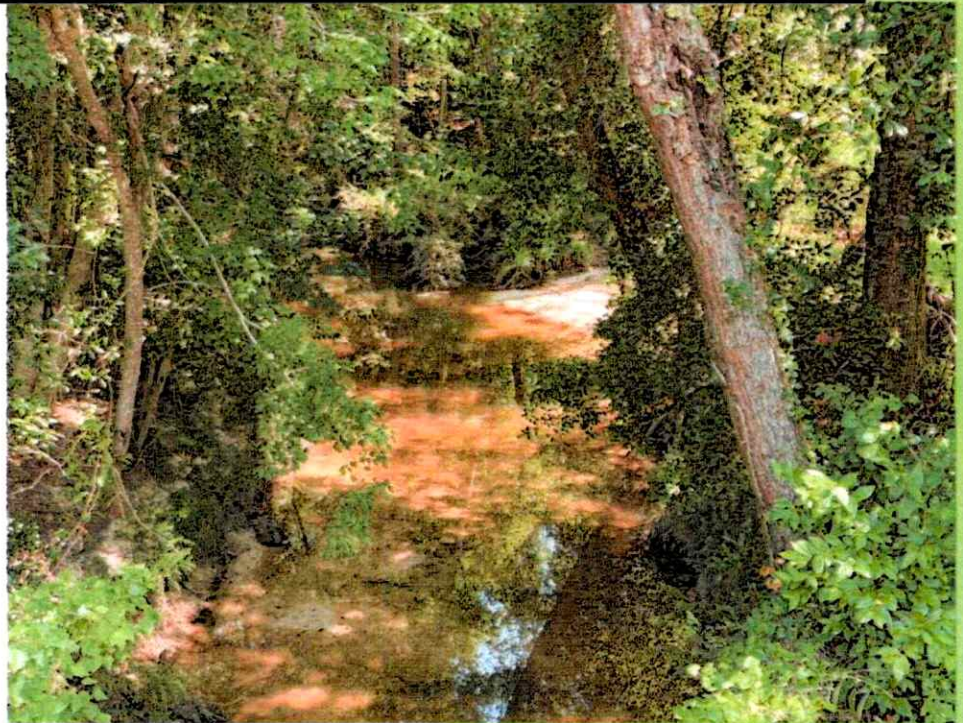




2026

# City of Diamondhead



PREPARED FOR:  
CITY OF DIAMONDHEAD, MS

Modernization of  
Utility Infrastructure



# Bank Stabilization

## DIAMONDHEAD BANK STABILIZATION

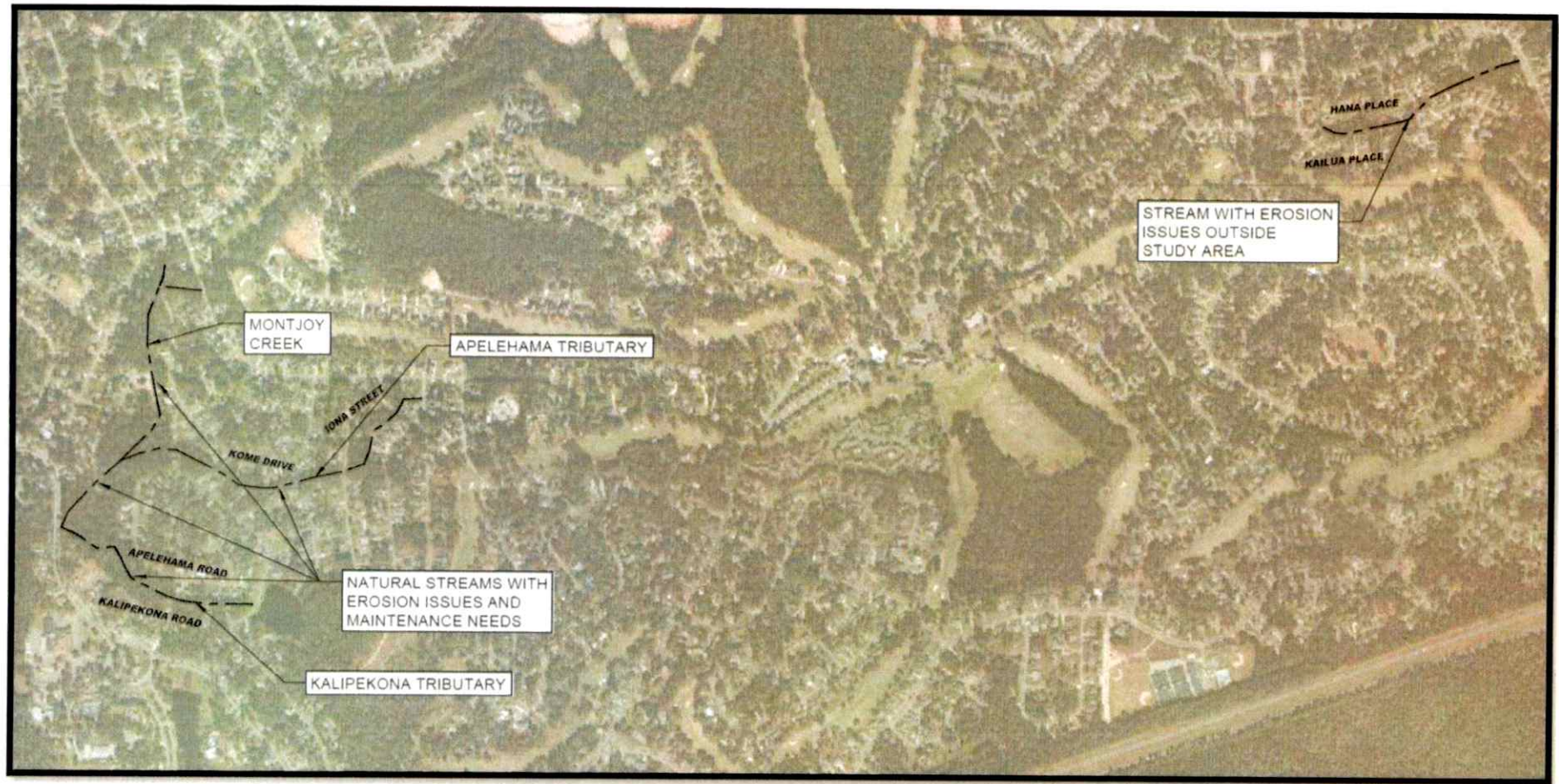
The City of Diamondhead recently engaged Covington Civil & Environmental to prepare a Master Drainage Plan to identify erosion and flood prone areas and recommendations for improvement as these areas experience flooding during heavy rainfall events. The streams and structures for ditches and infrastructure for the City of Diamondhead were modeled to determine stream velocities and appropriate conceptual improvements for bank stabilization measures.



*Watershed A, 55, and 56 Overview*

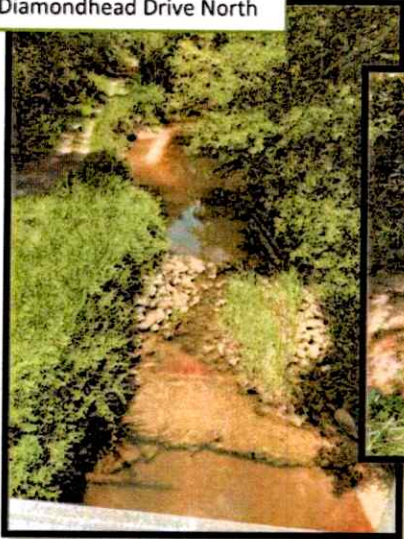
### EXISTING DRAINAGE SYSTEM

- The existing drainage system in this area consists of open ditches, driveway culverts, and landscape culverts which discharge to natural tributaries.
- Consists of tributaries that drain into Montjoy Creek also known as Rotten Bayou. Tributaries include Apelehama and Kalipekona. These tributaries were modeled and analyzed for capacity and erosion issues.
- These drainageways are heavily vegetated and meander between private property making access difficult for future inspection and maintenance.
- There are locations where there are abrupt changes of direction with minimal to no bank protection that have led to erosion issues.
- Residents have also reported erosion issues along these streams that adjoin their properties.



Bank Stabilization Improvements Locations

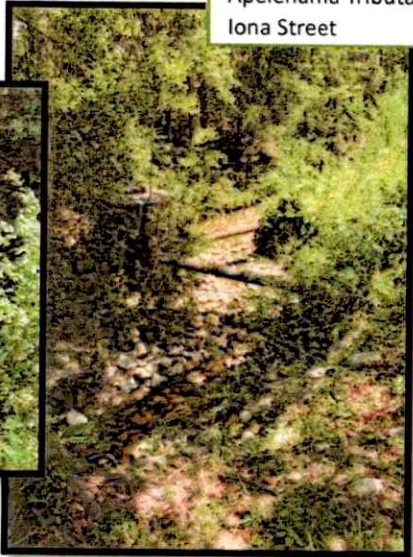
Montjoy Creek  
Diamondhead Drive North



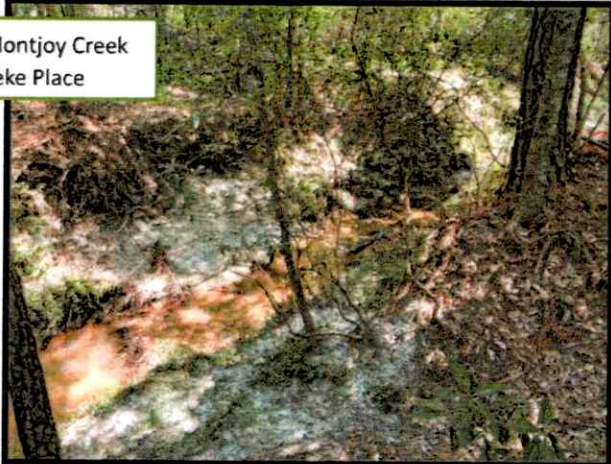
Kalipekona Tributary  
Anela Street



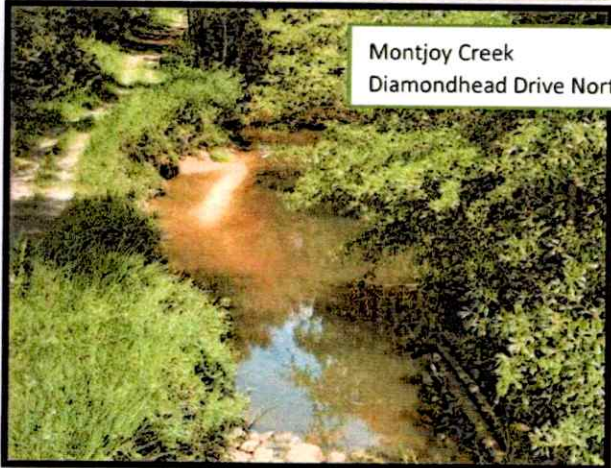
Apelehama Tributary  
Iona Street



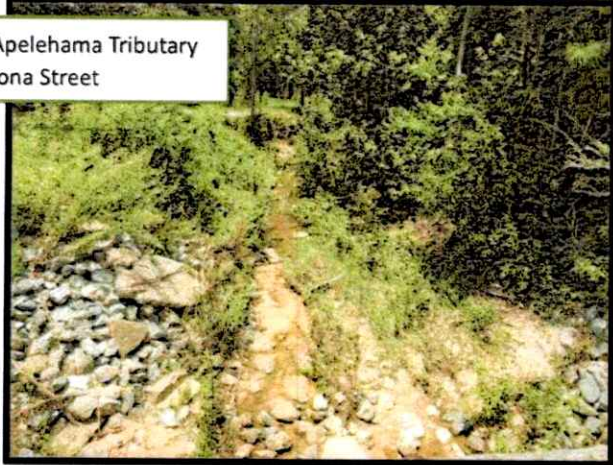
Montjoy Creek  
Leke Place



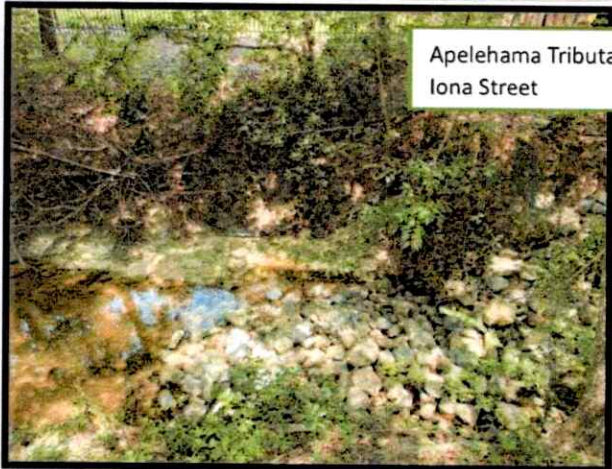
Montjoy Creek  
Diamondhead Drive North



Apelehama Tributary  
Iona Street



Apelehama Tributary  
Iona Street



# Utility Adjustments and Hardening

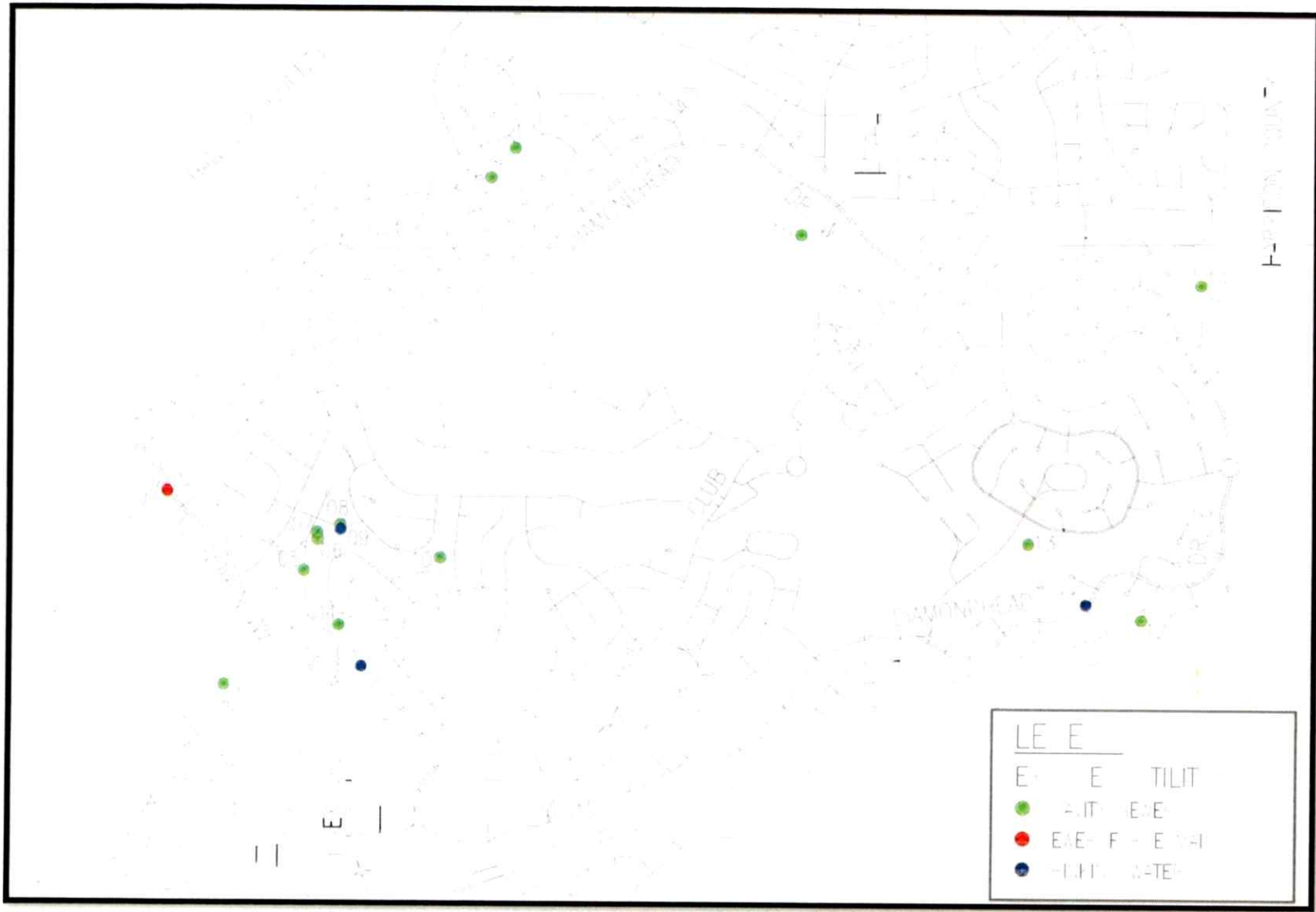
### EXPOSED WATER & SEWER AT DRAINAGE STRUCTURES

Diamondhead Water Sewer District evaluated all locations where Water and/or Sewer lines intersect drainage structures. Described herein is a list of critical issues that were identified and documented.

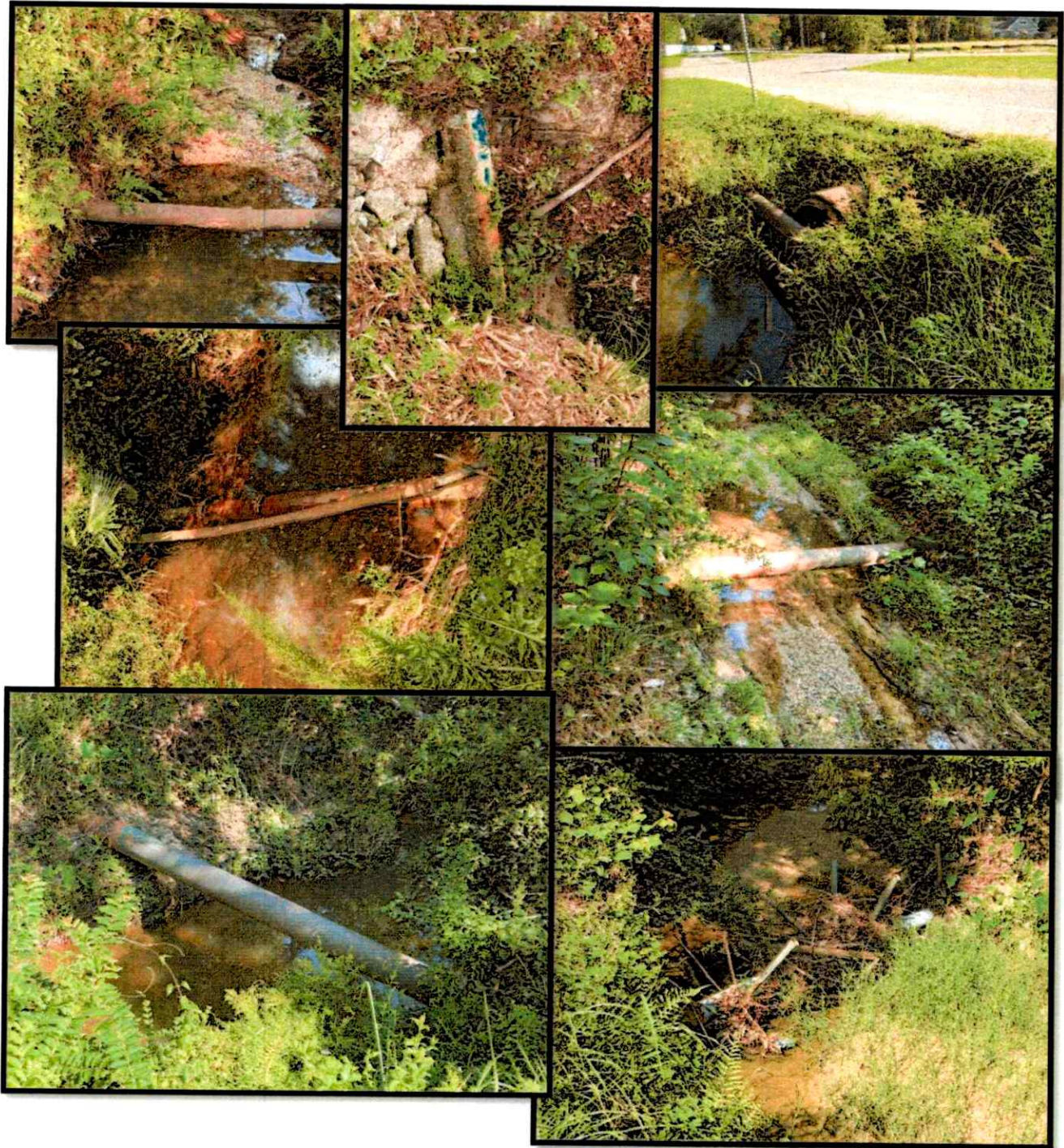
The following list contains utility lines that are exposed and/or aerial among drainage crossings. With over 150 intersections between water/sewer and drainage structures in Diamondhead, without preventative evaluation, the number of exposed utilities could continue to grow.

No.	Location Description	Approx. Coordinates	Material & Type
01-A	Creek crossing of Noma Dr	N30.3809 W89.3834	Ductile Iron Sewer
01-B	Creek crossing of Noma Dr	N30.3809 W89.3834	PVC/HDPE Sewer
02	West of DH Dr N near Devil's Elbow	N30.3879 W89.3859	Ductile Iron Force Main
03	DH Dr E, just east of DH Circle	N30.3816 W89.3777	Ductile Iron Water
04	North of Kalipekona Way, south of Apelehama Pl	N30.3831 W89.3786	Ductile Iron Sewer
08	Between Anela St ends, west of Kome Dr	N30.3867 W89.3786	Ductile Iron Sewer
09	Between Anela St ends, west of Kome Dr	N30.3867 W89.3786	DI to PVC Water
10	West of Iona St, SE of Kome Dr, NE Apelehama Cir	N30.3856 W89.3745	Ductile Iron Sewer
12	S of Auiki Pl, W of Apuwai Pl and E of Apona Ct	N30.3835 W89.3454	Ductile Iron Sewer
13	West of Pelican Cove cul de sac, E of Hilo St	N30.3863 W89.3501	PVC Sewer
16-A	North of Op La Way, south of Lae Pl	N30.3994 W89.3725	PVC Sewer
17	Southwest of Kolo Ct, east of Lae Pl	N30.4005 W89.3715	PVC Sewer

*Exposed Utility Location and Description*



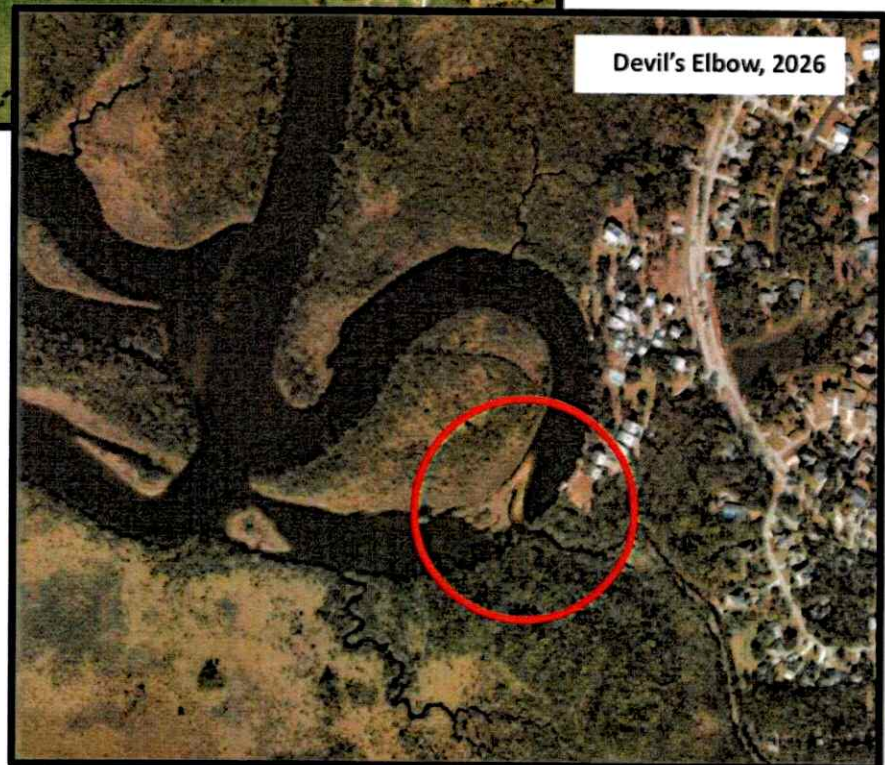
Exposed Utility Locations





# Sedimentation Removal and Restoration

- Upstream erosion causes downstream sedimentation causing loss of drainage capacity and flooding of drainage system.
- The erosion is due to urbanization and increased runoff.
- Currently, the City of Diamondhead is designing and constructing sediment traps in Montjoy Creek to prevent future sedimentation.
- Dredging is needed to restore capacity function and use to the City of Diamondhead.
- 





**City of Diamondhead**

**Opinion of Probable Cost**

**Modernization of Utility Infrastructure**

Scope of Work	Cost
Bank Stabilization	\$ 4,475,000.00
Utility Adjustments and Hardening	\$ 1,750,000.00
Removal and Restoration of Sedimentation	\$ 1,775,000.00
<b>Total Estimated Project Cost</b>	<b>\$ 8,000,000.00</b>