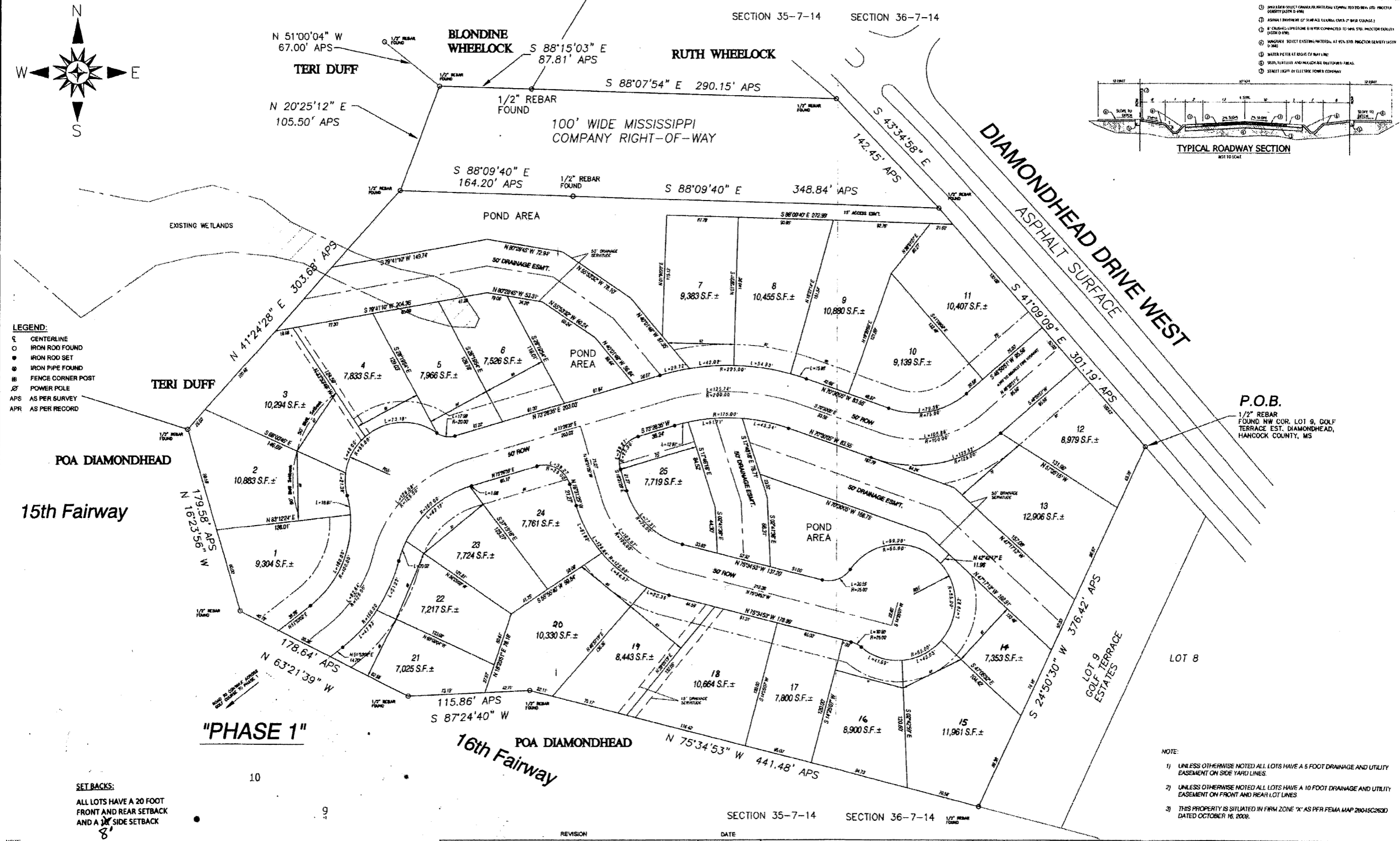
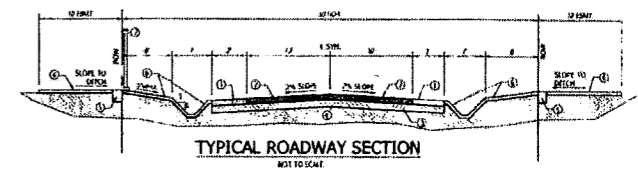


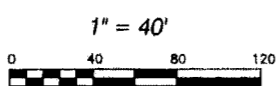
- ① 2" DIA. REBAR SET AT 12" ON CENTER FOR CONCRETE CURB AND GUTTER
- ② 4" DIA. REBAR SET AT 12" ON CENTER FOR CONCRETE CURB AND GUTTER
- ③ 4" DIA. REBAR SET AT 12" ON CENTER FOR CONCRETE CURB AND GUTTER
- ④ 4" DIA. REBAR SET AT 12" ON CENTER FOR CONCRETE CURB AND GUTTER
- ⑤ 4" DIA. REBAR SET AT 12" ON CENTER FOR CONCRETE CURB AND GUTTER
- ⑥ 4" DIA. REBAR SET AT 12" ON CENTER FOR CONCRETE CURB AND GUTTER
- ⑦ 4" DIA. REBAR SET AT 12" ON CENTER FOR CONCRETE CURB AND GUTTER
- ⑧ 4" DIA. REBAR SET AT 12" ON CENTER FOR CONCRETE CURB AND GUTTER
- ⑨ 4" DIA. REBAR SET AT 12" ON CENTER FOR CONCRETE CURB AND GUTTER
- ⑩ 4" DIA. REBAR SET AT 12" ON CENTER FOR CONCRETE CURB AND GUTTER



- LEGEND:**
- CENTERLINE
 - IRON ROD FOUND
 - IRON ROD SET
 - ⊙ IRON PIPE FOUND
 - ⊠ FENCE CORNER POST
 - ⊕ POWER POLE
 - APS AS PER SURVEY
 - APR AS PER RECORD

- NOTE:**
- 1) UNLESS OTHERWISE NOTED ALL LOTS HAVE A 5 FOOT DRAINAGE AND UTILITY EASEMENT ON SIDE YARD LINES.
 - 2) UNLESS OTHERWISE NOTED ALL LOTS HAVE A 10 FOOT DRAINAGE AND UTILITY EASEMENT ON FRONT AND REAR LOT LINES.

SET BACKS:
ALL LOTS HAVE A 20 FOOT FRONT AND REAR SETBACK AND A 5 FOOT SIDE SETBACK



REVISION	DATE

DUKE LEVY & ASSOCIATES, P.A.
4412 LEISURE TIME DRIVE
DIAMONDHEAD, MS 39526
(228) 467-5212 PHONE

PHASE 2 PLAT
THE PRESERVE SUBDIVISION, PHASE 2
DIAMONDHEAD, MS

SHEET NO

- NOTE:**
- 1) UNLESS OTHERWISE NOTED ALL LOTS HAVE A 5 FOOT DRAINAGE AND UTILITY EASEMENT ON SIDE YARD LINES.
 - 2) UNLESS OTHERWISE NOTED ALL LOTS HAVE A 10 FOOT DRAINAGE AND UTILITY EASEMENT ON FRONT AND REAR LOT LINES.
 - 3) THIS PROPERTY IS SITUATED IN FIRM ZONE 'X' AS PER FEMA MAP 26045C2630 DATED OCTOBER 16, 2008.