

PREPARED BY:



2300 14TH STREET
GULFPORT, MISSISSIPPI 39501
Office: (228)396-0486

PREPARED FOR:

CITY OF DIAMONDHEAD

FIGURE TITLE:

STORM DRAIN PIPE WRAP

NORTH ARROW



DRAWN BY:

TP

DATE DRAWN:

JOB NUMBER:

16175

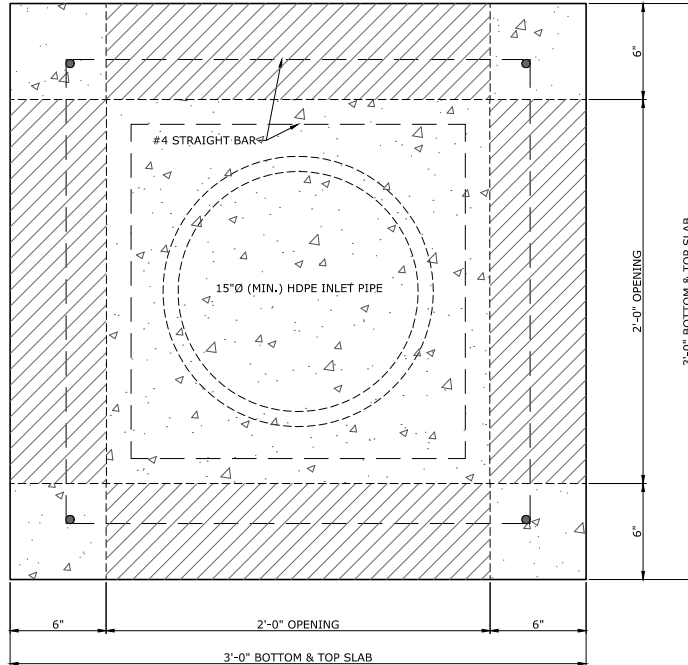
SCALE:

NTS

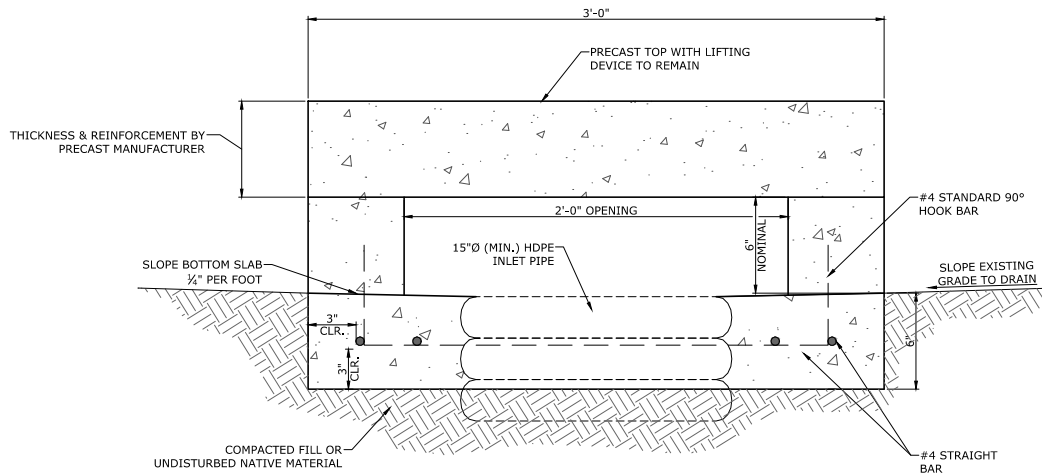
FIGURE NUMBER:

CCE-229

CITY OF DIAMONDHEAD STANDARD CONSTRUCTION DETAILS



PLAN



SECTION

REINFORCED CONCRETE NOTES:
 CONCRETE MIXTURE SELECTED SHALL BE SUITABLE FOR A COMPRESSIVE STRENGTH OF 3,500 PSI.
 COARSE AGGREGATE SHALL BE SIZE 57 OR 67.
 THE MAXIMUM WATER/CEMENTITIOUS RATIO SHALL BE 0.50.
 THE MAXIMUM PERMITTED SLUMP SHALL BE 4 - 8 INCHES.
 THE NOMINAL AIR CONTENT SHALL BE 4.5% ± 1.5%.
 STEEL REINFORCEMENT SHALL BE ASTM A615 GRADE 40 (MIN).
 A PREPACKAGED PRODUCT SATISFYING THE REQUIREMENTS OF ASTM C928 IS ACCEPTABLE.

PREPARED BY:



2300 14TH STREET
 GULFPORT, MISSISSIPPI 39501
 Office: (228)396-0486

PREPARED FOR:

CITY OF DIAMONDHEAD

FIGURE TITLE:

CONCRETE OPEN TOP INLET
 TYPE A

NORTH ARROW



DRAWN BY:

TP

DATE DRAWN:

JOB NUMBER:

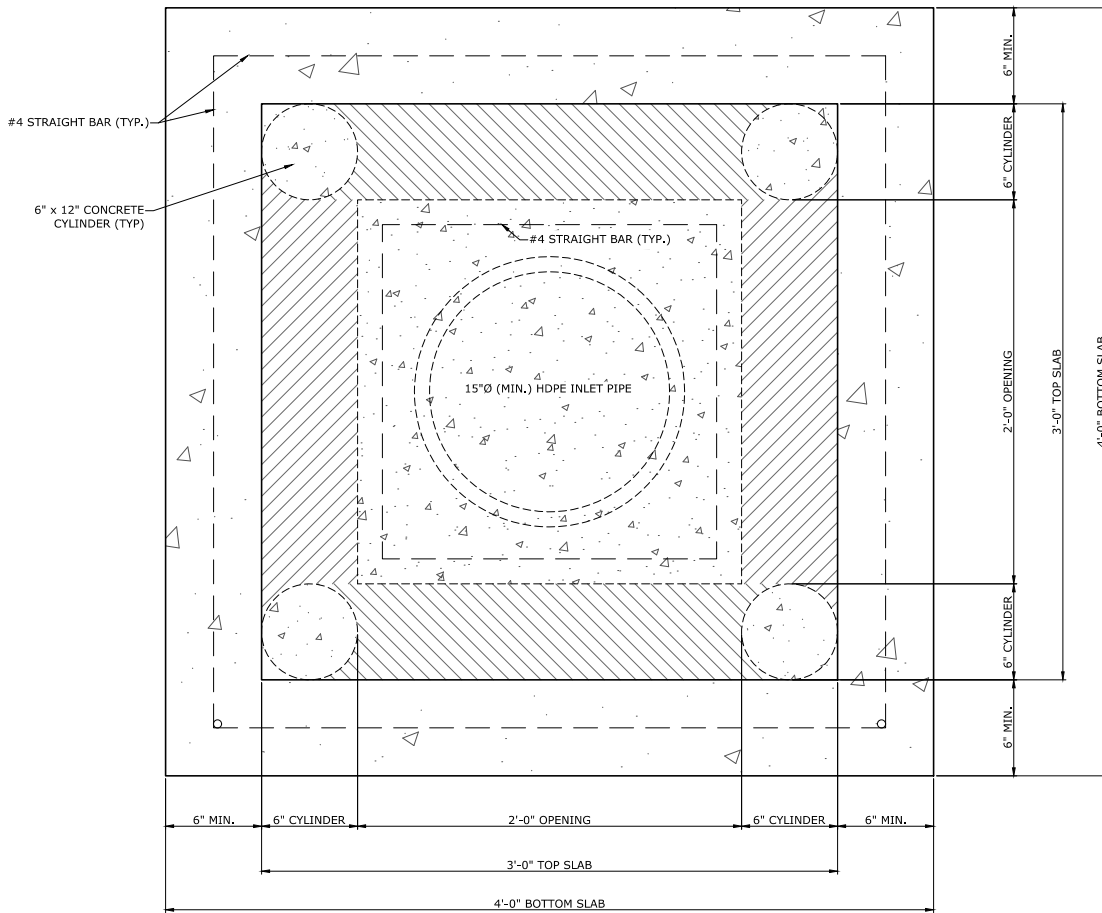
16175

SCALE:

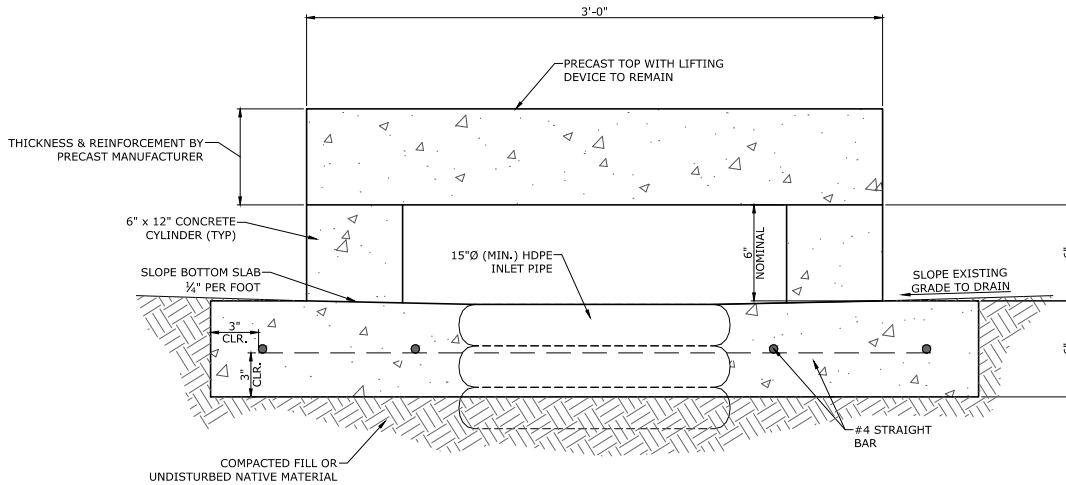
NTS

FIGURE NUMBER:

CCE-238 A



PLAN



SECTION

REINFORCED CONCRETE NOTES:
 CONCRETE MIXTURE SELECTED SHALL BE SUITABLE FOR A COMPRESSIVE STRENGTH OF 3,500 PSI.
 COARSE AGGREGATE SHALL BE SIZE 57 OR 67.
 THE MAXIMUM WATER/CEMENTITIOUS RATIO SHALL BE 0.50.
 THE MAXIMUM PERMITTED SLUMP SHALL BE 4 - 8 INCHES.
 THE NOMINAL AIR CONTENT SHALL BE 4.5% ± 1.5%.
 STEEL REINFORCEMENT SHALL BE ASTM A615 GRADE 40 (MIN).
 A PREPACKAGED PRODUCT SATISFYING THE REQUIREMENTS OF ASTM C928 IS ACCEPTABLE.

PREPARED BY:



2300 14TH STREET
 GULFPORT, MISSISSIPPI 39501
 Office: (228)396-0486

PREPARED FOR:

CITY OF DIAMONDHEAD

FIGURE TITLE:

CONCRETE OPEN TOP INLET
 TYPE B

NORTH ARROW



DRAWN BY:

TP

DATE DRAWN:

JOB NUMBER:

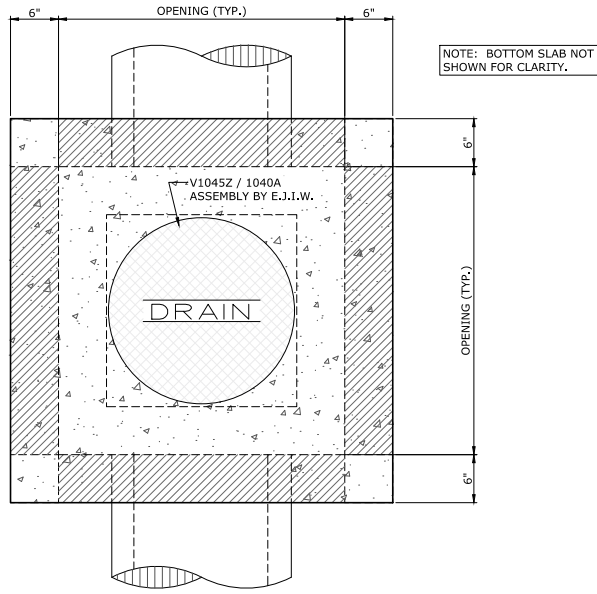
16175

SCALE:

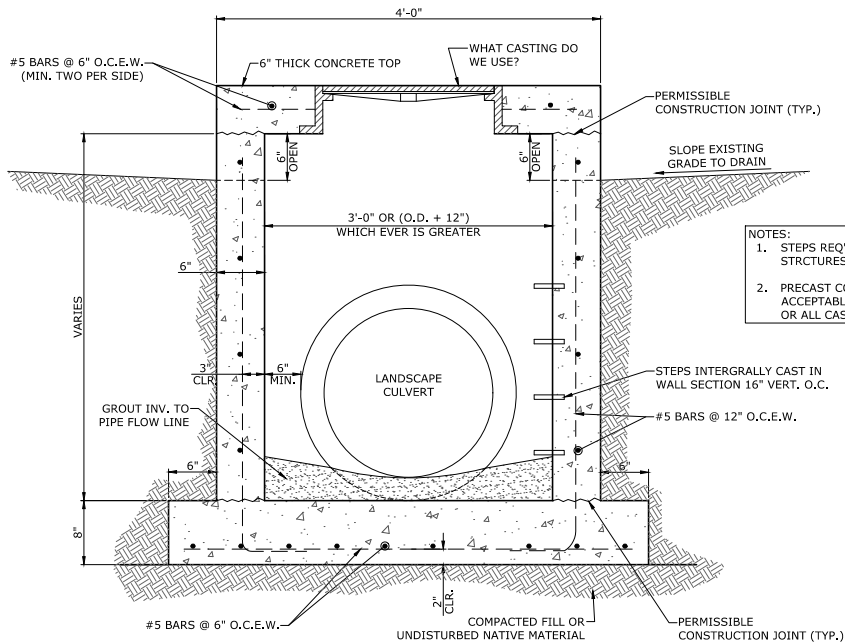
NTS

FIGURE NUMBER:

CCE-238 B



PLAN



SECTION

- NOTES:
1. STEPS REQ'D IN ALL DRAINAGE STRUCTURES OVER 4'-0" IN DEPTH.
 2. PRECAST CONCRETE IS AN ACCEPTABLE SUBSTITUTION TO ANY OR ALL CAST-IN-PLACE SHOWN.

REINFORCED CONCRETE NOTES:
 CONCRETE MIXTURE SELECTED SHALL BE SUITABLE FOR A COMPRESSIVE STRENGTH OF 3,500 PSI.
 COARSE AGGREGATE SHALL BE SIZE 57 OR 67.
 THE MAXIMUM WATER/CEMENTITIOUS RATIO SHALL BE 0.50.
 THE MAXIMUM PERMITTED SLUMP SHALL BE 4 - 8 INCHES.
 THE NOMINAL AIR CONTENT SHALL BE 4.5% ± 1.5%.
 STEEL REINFORCEMENT SHALL BE ASTM A615 GRADE 40 (MIN).
 A PREPACKAGED PRODUCT SATISFYING THE REQUIREMENTS OF ASTM C928 IS ACCEPTABLE.

PREPARED BY: 	2300 14TH STREET GULFPORT, MISSISSIPPI 39501 Office: (228)396-0486	PREPARED FOR: CITY OF DIAMONDHEAD	DRAWN BY: TP
		FIGURE TITLE: CONCRETE JUNCTION BOX W/ OPEN TOP INLET	DATE DRAWN: JOB NUMBER: 16175
CITY OF DIAMONDHEAD STANDARD CONSTRUCTION DETAILS		NORTH ARROW 	SCALE: NTS
			FIGURE NUMBER: CCE-239