

Note: Base map prepared from USGS 7.5-minute quadrangles of Redmond and O'Neil, OR, dated 2011 as provided by USGS.gov.



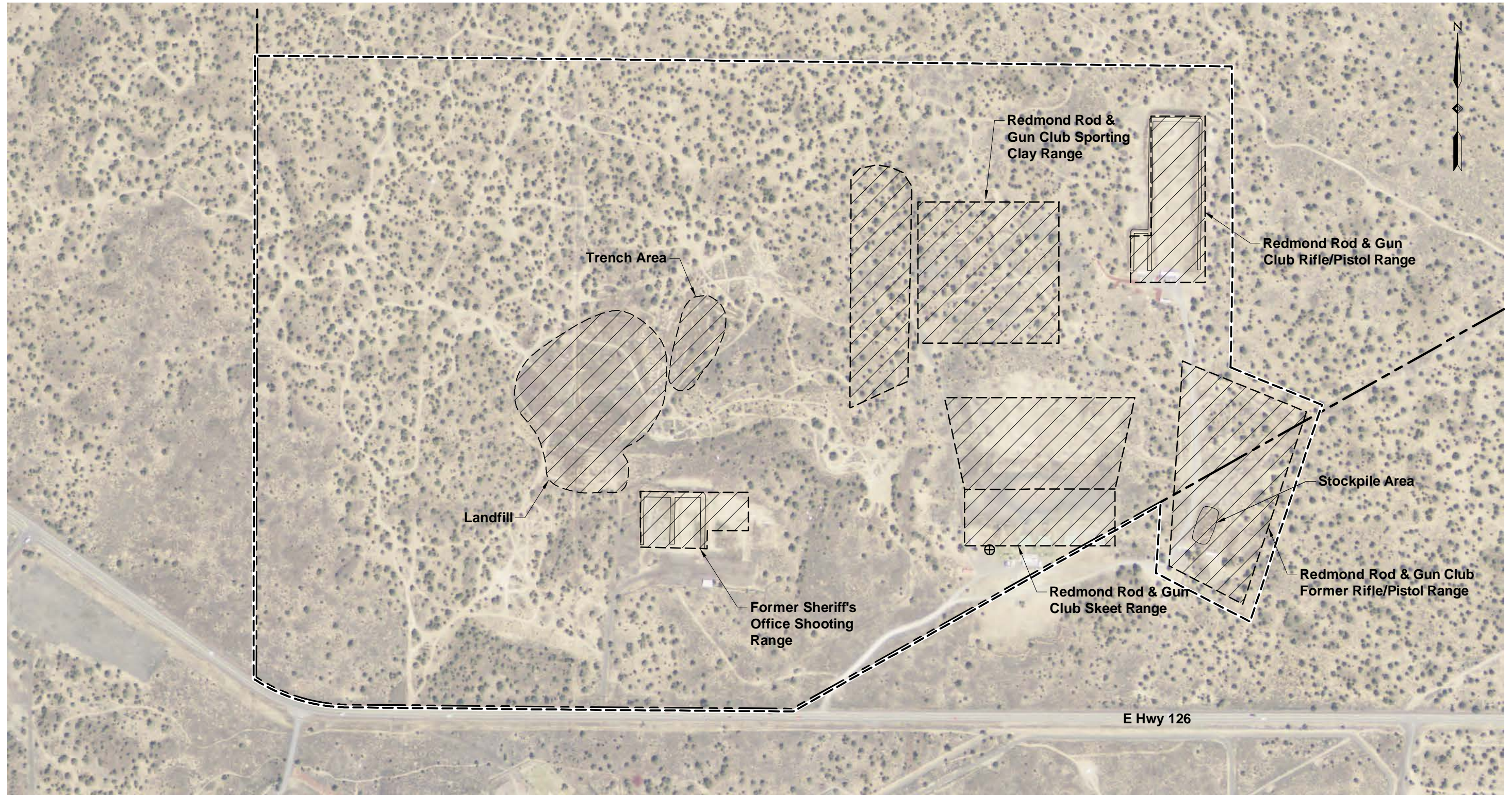
Site Location Map

Feasibility Study
 Deschutes County Shooting Range Property
 Deschutes County, Oregon

 Apex Companies, LLC
 3015 SW First Avenue
 Portland, Oregon 97201

Project Number	2112-05
November 2018	

Figure	1
--------	---

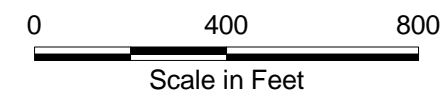


Legend:

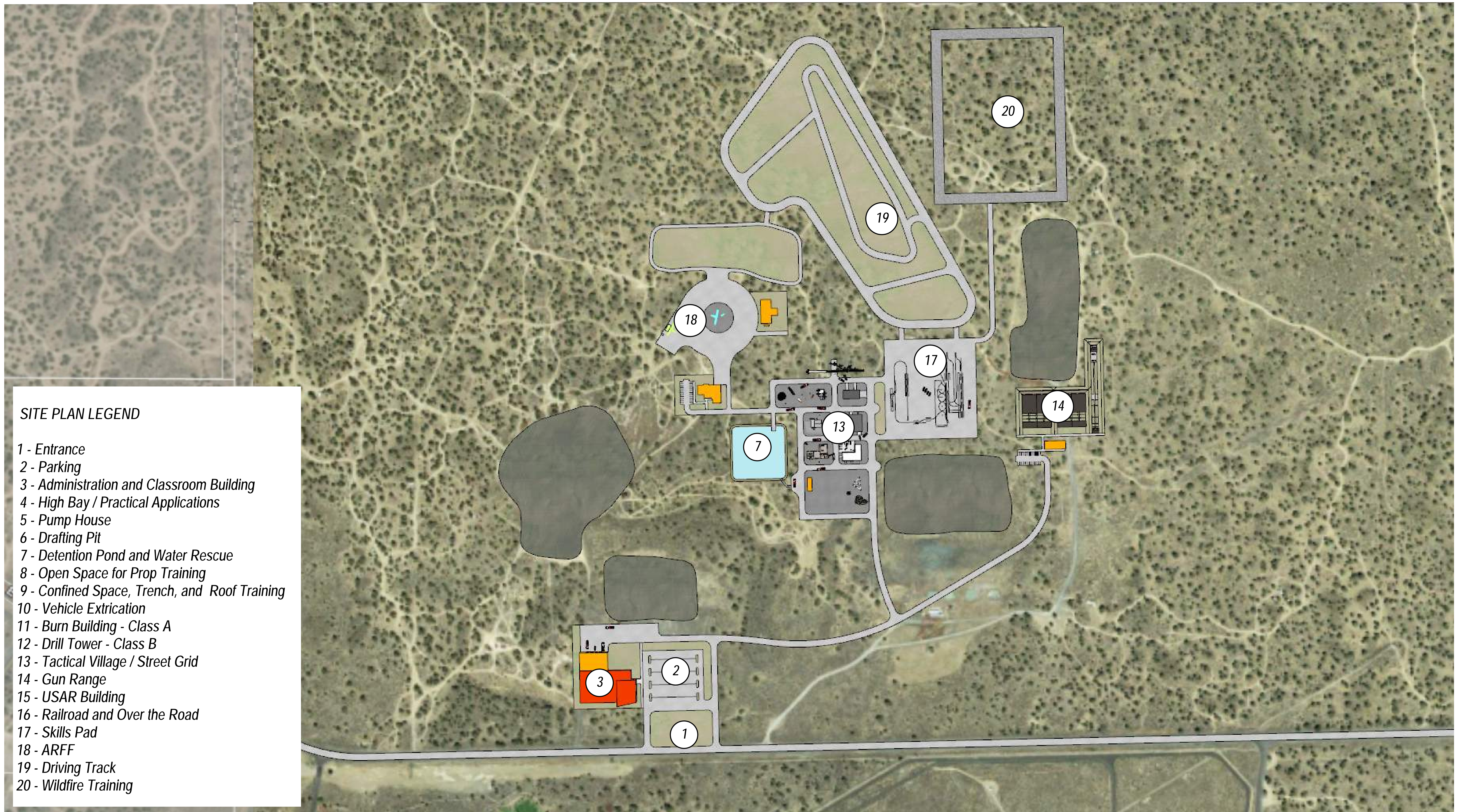
- Site Feature
- Taxlot Boundary
- Site Boundary
- ⊕ Production Well (Not in Use)

Sources:

- 1) Tax Lots from Deschutes County.
- 2) Aerial from Nationalmap.gov. Aerial dated 6-10-2012.



Site Vicinity Plan		
Feasibility Study		
Deschutes County Shooting Range Property		
Deschutes County, Oregon		
 Apex Companies, LLC 3015 SW First Avenue Portland, Oregon 97201	Project Number 2112-05 May 2020	Figure 2



SITE PLAN LEGEND

- 1 - Entrance
- 2 - Parking
- 3 - Administration and Classroom Building
- 4 - High Bay / Practical Applications
- 5 - Pump House
- 6 - Drafting Pit
- 7 - Detention Pond and Water Rescue
- 8 - Open Space for Prop Training
- 9 - Confined Space, Trench, and Roof Training
- 10 - Vehicle Extrication
- 11 - Burn Building - Class A
- 12 - Drill Tower - Class B
- 13 - Tactical Village / Street Grid
- 14 - Gun Range
- 15 - USAR Building
- 16 - Railroad and Over the Road
- 17 - Skills Pad
- 18 - ARFF
- 19 - Driving Track
- 20 - Wildfire Training

Site Master Plan

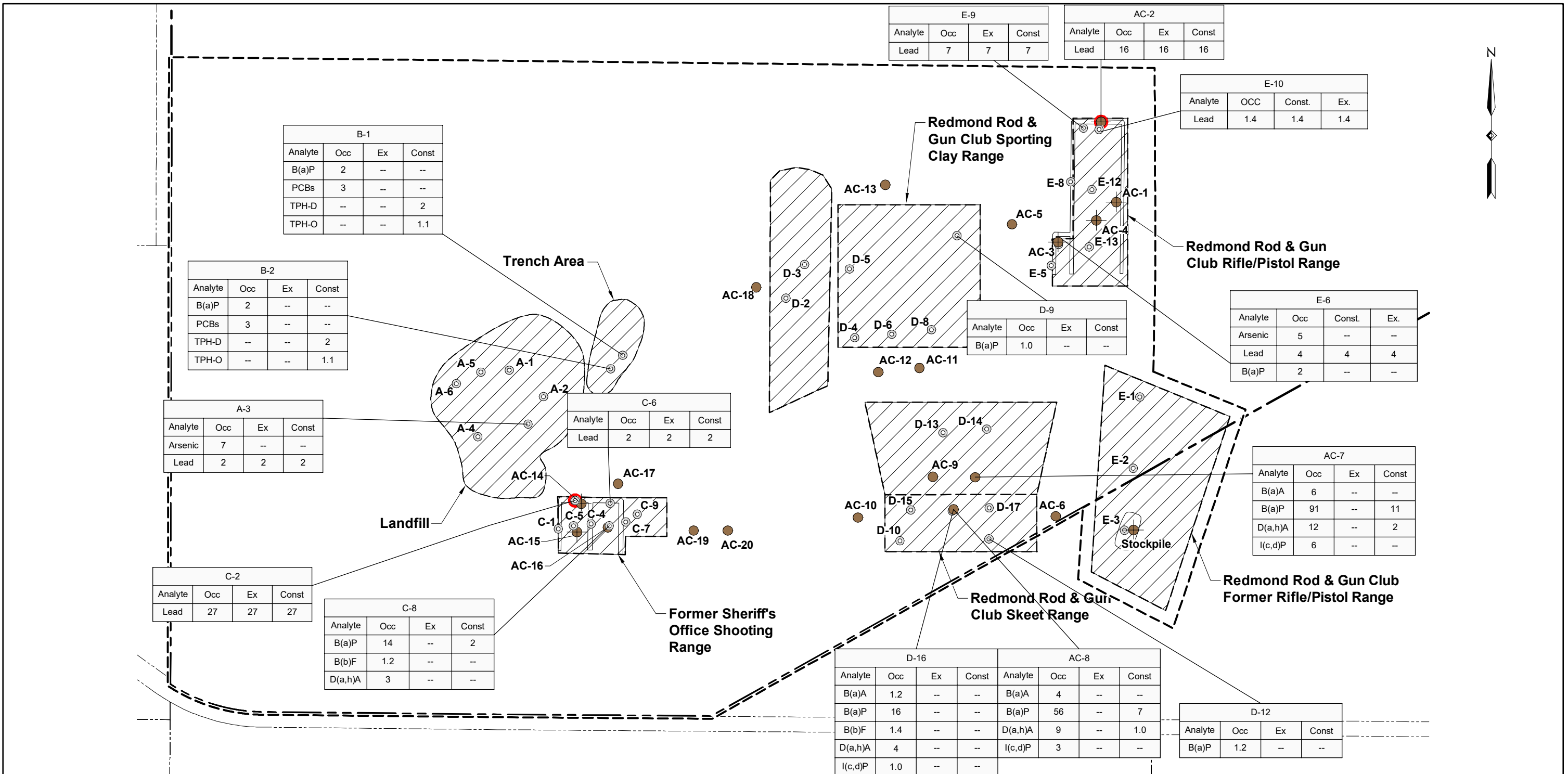
Central Oregon Public Safety Training Center

2021-06-08

3003.430.00



Figure 3 - Site Master Plan



Source:
1) Tax Lots from Deschutes County.

Legend:

- MW-9 Sample Location (Targeted Brownfield Assessment, 2009)
- AC-5 Soil Sample Location (Data Gap Assessment, 2014)
- AC-1 Leachability Evaluation Soil Sample Location (Data Gap Assessment, 2014)

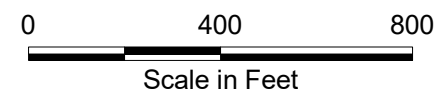
Analyte	Occ	Const	Ex
Lead	6	--	--
B(a)P	1	--	--

--- Taxlot Boundary
- - - Site Boundary
 Site Feature

Exceedance Ratio (ER)

-- = Does Not Exceed this Screening Level
 PCBs = Polychlorinated Biphenyls
 TPH-D = Total Petroleum Hydrocarbons - Diesel-Range
 TPH-O = Total Petroleum Hydrocarbons - Oil-Range
 B(a)A = Benzo(a)anthracene
 B(a)P = Benzo(a)pyrene
 B(b)F = Benzo(a)fluoranthene
 D(a,h)A = Dibenzo(a,h)anthracene
 I(c,d)P = Indeno(1,2,3-c,d)pyrene
 Occ = Occupational Risk-Based Concentration
 Ex = Excavation Worker - Risk-Based Concentration
 Const = Construction Worker - Risk-Based Concentration
 ER = Calculated as Concentration + RBC

Exceeds DEQ Hot Spot Level For Human Health Risk (Hot Spot Level Equals an Exceedance Factor of 100 for Carcinogens and 10 for Non-Carcinogens)

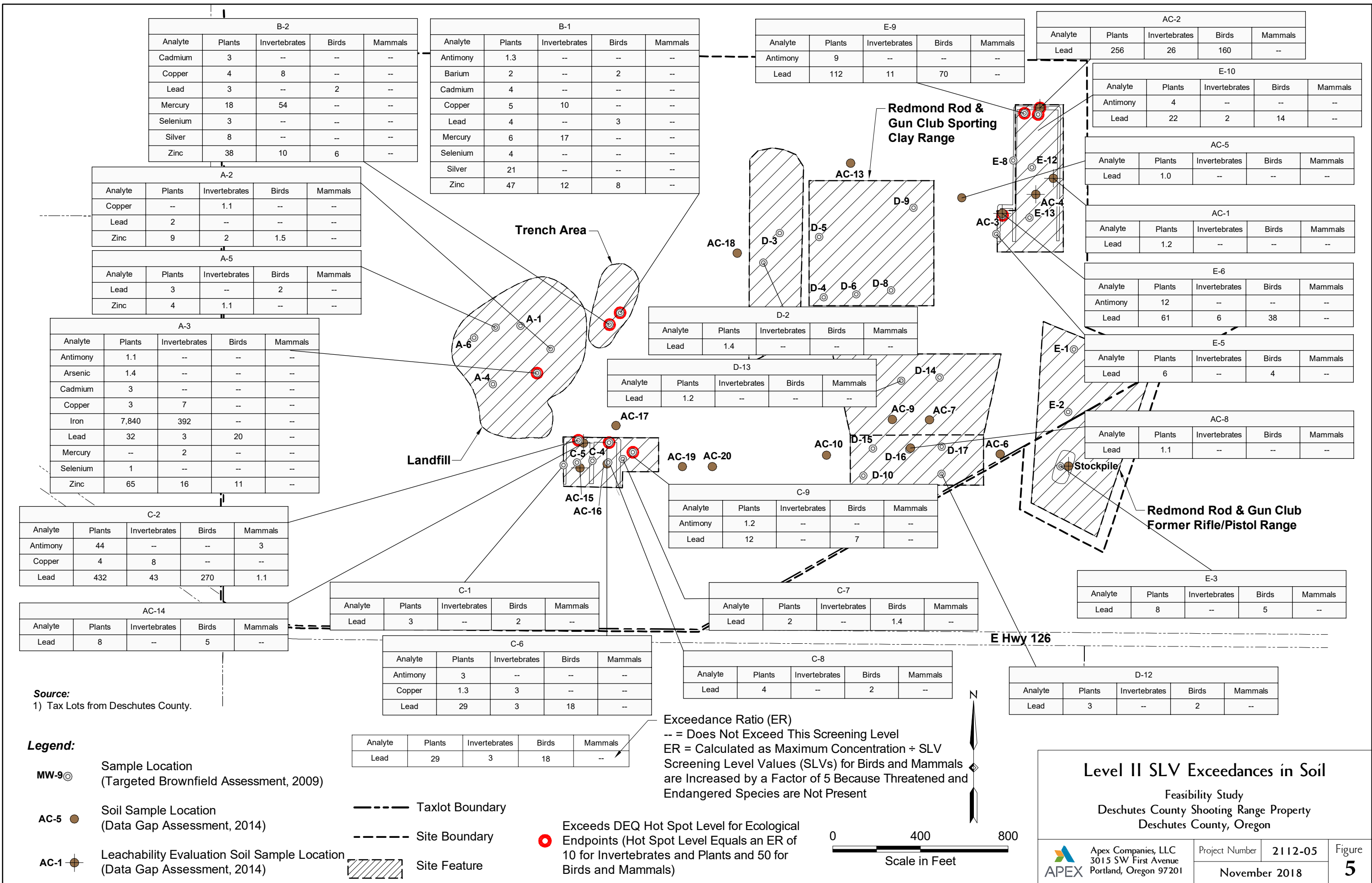


Human Health RBC Exceedances in Soil

Feasibility Study
Deschutes County Shooting Range Property
Deschutes County, Oregon

Apex Companies, LLC
3015 SW First Avenue
Portland, Oregon 97201

Project Number	2112-05	Figure	4
November 2018			



B-2				
Analyte	Plants	Invertebrates	Birds	Mammals
Cadmium	3	--	--	--
Copper	4	8	--	--
Lead	3	--	2	--
Mercury	18	54	--	--
Selenium	3	--	--	--
Silver	8	--	--	--
Zinc	38	10	6	--

B-1				
Analyte	Plants	Invertebrates	Birds	Mammals
Antimony	1.3	--	--	--
Barium	2	--	2	--
Cadmium	4	--	--	--
Copper	5	10	--	--
Lead	4	--	3	--
Mercury	6	17	--	--
Selenium	4	--	--	--
Silver	21	--	--	--
Zinc	47	12	8	--

E-9				
Analyte	Plants	Invertebrates	Birds	Mammals
Antimony	9	--	--	--
Lead	112	11	70	--

AC-2				
Analyte	Plants	Invertebrates	Birds	Mammals
Lead	256	26	160	--

E-10				
Analyte	Plants	Invertebrates	Birds	Mammals
Antimony	4	--	--	--
Lead	22	2	14	--

A-2				
Analyte	Plants	Invertebrates	Birds	Mammals
Copper	--	1.1	--	--
Lead	2	--	--	--
Zinc	9	2	1.5	--

A-5				
Analyte	Plants	Invertebrates	Birds	Mammals
Lead	3	--	2	--
Zinc	4	1.1	--	--

A-3				
Analyte	Plants	Invertebrates	Birds	Mammals
Antimony	1.1	--	--	--
Arsenic	1.4	--	--	--
Cadmium	3	--	--	--
Copper	3	7	--	--
Iron	7,840	392	--	--
Lead	32	3	20	--
Mercury	--	2	--	--
Selenium	1	--	--	--
Zinc	65	16	11	--

C-2				
Analyte	Plants	Invertebrates	Birds	Mammals
Antimony	44	--	--	3
Copper	4	8	--	--
Lead	432	43	270	1.1

AC-14				
Analyte	Plants	Invertebrates	Birds	Mammals
Lead	8	--	5	--

C-1				
Analyte	Plants	Invertebrates	Birds	Mammals
Lead	3	--	2	--

C-6				
Analyte	Plants	Invertebrates	Birds	Mammals
Antimony	3	--	--	--
Copper	1.3	3	--	--
Lead	29	3	18	--

D-2				
Analyte	Plants	Invertebrates	Birds	Mammals
Lead	1.4	--	--	--

D-13				
Analyte	Plants	Invertebrates	Birds	Mammals
Lead	1.2	--	--	--

C-9				
Analyte	Plants	Invertebrates	Birds	Mammals
Antimony	1.2	--	--	--
Lead	12	--	7	--

C-7				
Analyte	Plants	Invertebrates	Birds	Mammals
Lead	2	--	1.4	--

C-8				
Analyte	Plants	Invertebrates	Birds	Mammals
Lead	4	--	2	--

E-6				
Analyte	Plants	Invertebrates	Birds	Mammals
Antimony	12	--	--	--
Lead	61	6	38	--

E-5				
Analyte	Plants	Invertebrates	Birds	Mammals
Lead	6	--	4	--

AC-8				
Analyte	Plants	Invertebrates	Birds	Mammals
Lead	1.1	--	--	--

E-3				
Analyte	Plants	Invertebrates	Birds	Mammals
Lead	8	--	5	--

D-12				
Analyte	Plants	Invertebrates	Birds	Mammals
Lead	3	--	2	--

Source:
1) Tax Lots from Deschutes County.

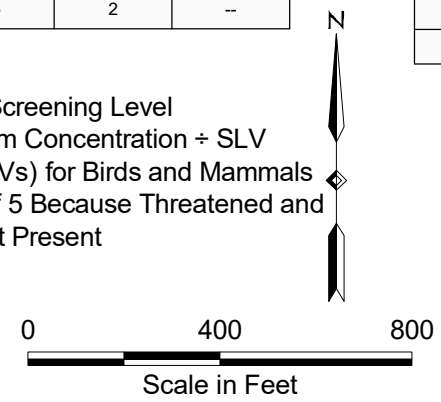
Legend:

- MW-9 ⊙ Sample Location (Targeted Brownfield Assessment, 2009)
- AC-5 ● Soil Sample Location (Data Gap Assessment, 2014)
- AC-1 ⊕ Leachability Evaluation Soil Sample Location (Data Gap Assessment, 2014)

- Taxlot Boundary
- Site Boundary
- ▨ Site Feature

Exceeds DEQ Hot Spot Level for Ecological Endpoints (Hot Spot Level Equals an ER of 10 for Invertebrates and Plants and 50 for Birds and Mammals)

Exceedance Ratio (ER)
 -- = Does Not Exceed This Screening Level
 ER = Calculated as Maximum Concentration ÷ SLV
 Screening Level Values (SLVs) for Birds and Mammals are Increased by a Factor of 5 Because Threatened and Endangered Species are Not Present



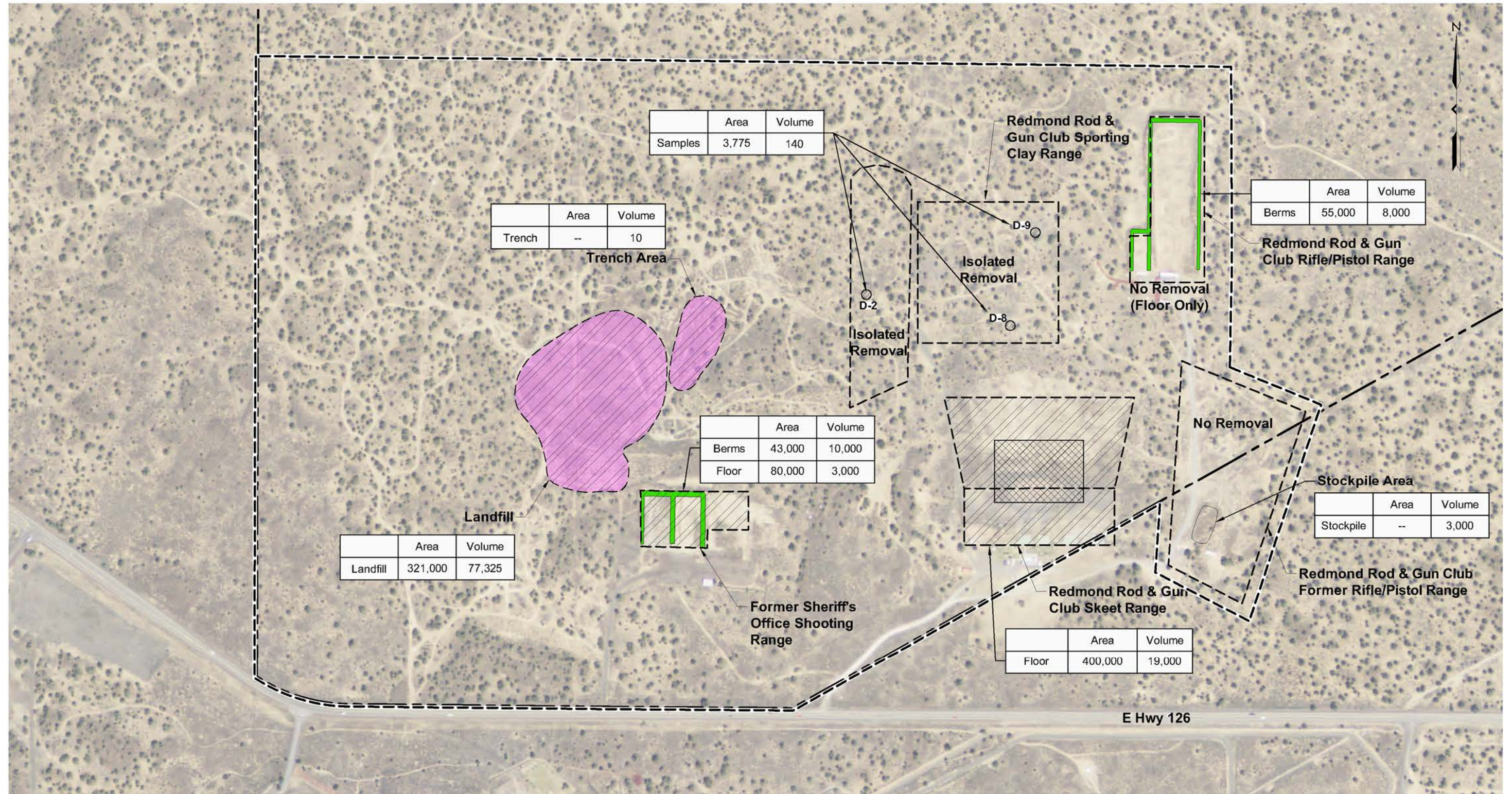
Level II SLV Exceedances in Soil

Feasibility Study
 Deschutes County Shooting Range Property
 Deschutes County, Oregon

APEX
 Apex Companies, LLC
 3015 SW First Avenue
 Portland, Oregon 97201

Project Number 2112-05
 November 2018

Figure 5

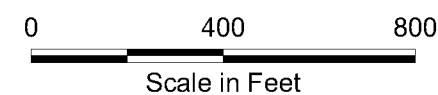


Legend:

- Site Feature
- Taxlot Boundary
- Site Boundary
- Solid Waste Disposal and Trench Removal Area
- Berm Removal Areas
- Range Floor Removal Area (1 ft Depth)
- Range Floor Removal Area (2 ft Depth)

	Area	Volume
Floor		

Area in Square Feet
Volume in Cubic Yards



Sources:
 1) Tax Lots from Deschutes County.
 2) Aerial from Nationalmap.gov. Aerial dated 6-10-2012.

Removal Areas and Volumes

Feasibility Study
 Deschutes County Shooting Range Property
 Deschutes County, Oregon

APEX
 Apex Companies, LLC
 3015 SW First Avenue
 Portland, Oregon 97201

Project Number	2112-05
November 2018	