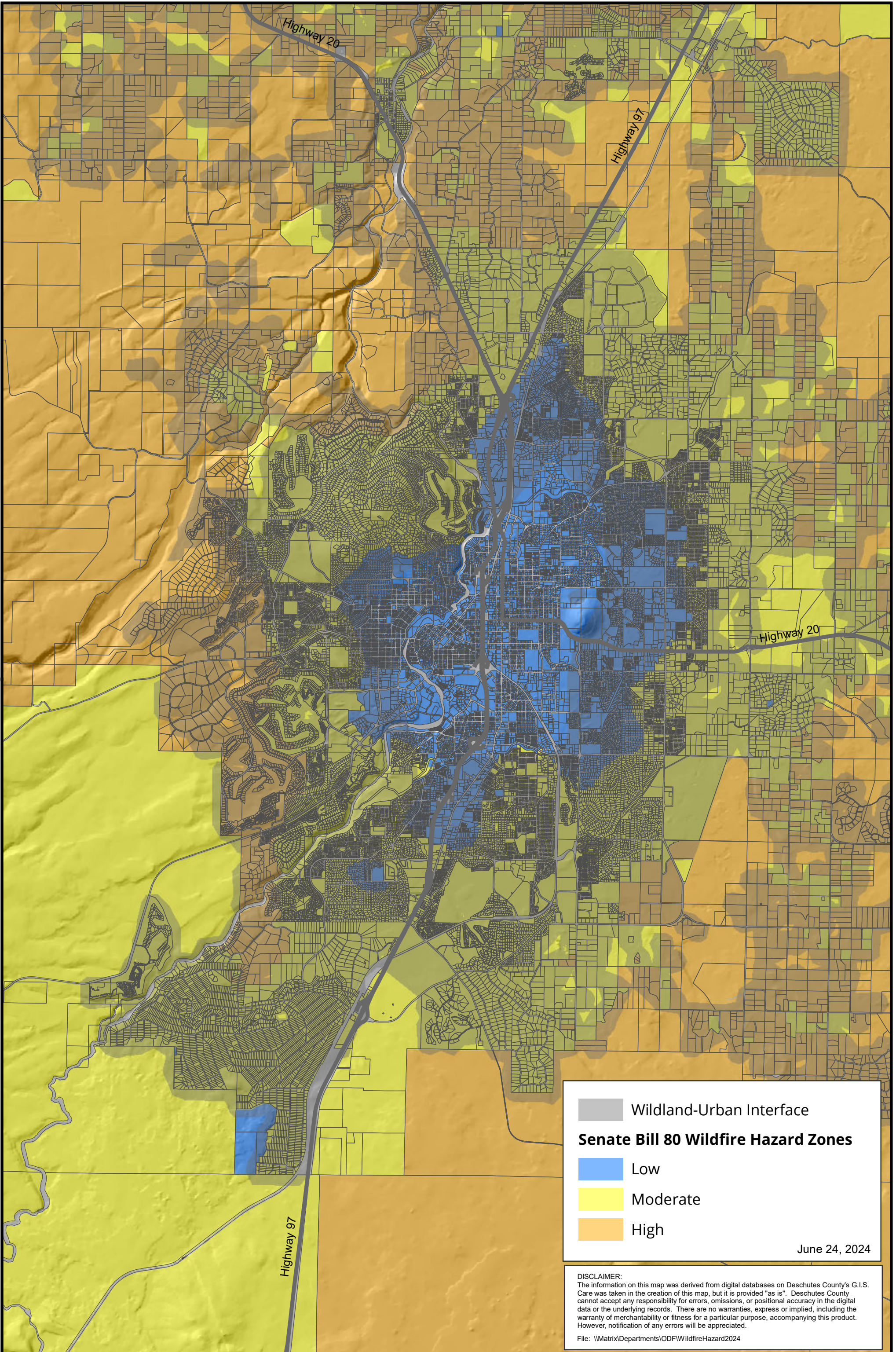




1" = 1 Mi.

Bend Area - Draft Senate Bill 80 Wildfire Hazard



Wildland-Urban Interface
Senate Bill 80 Wildfire Hazard Zones
 Low
 Moderate
 High

June 24, 2024

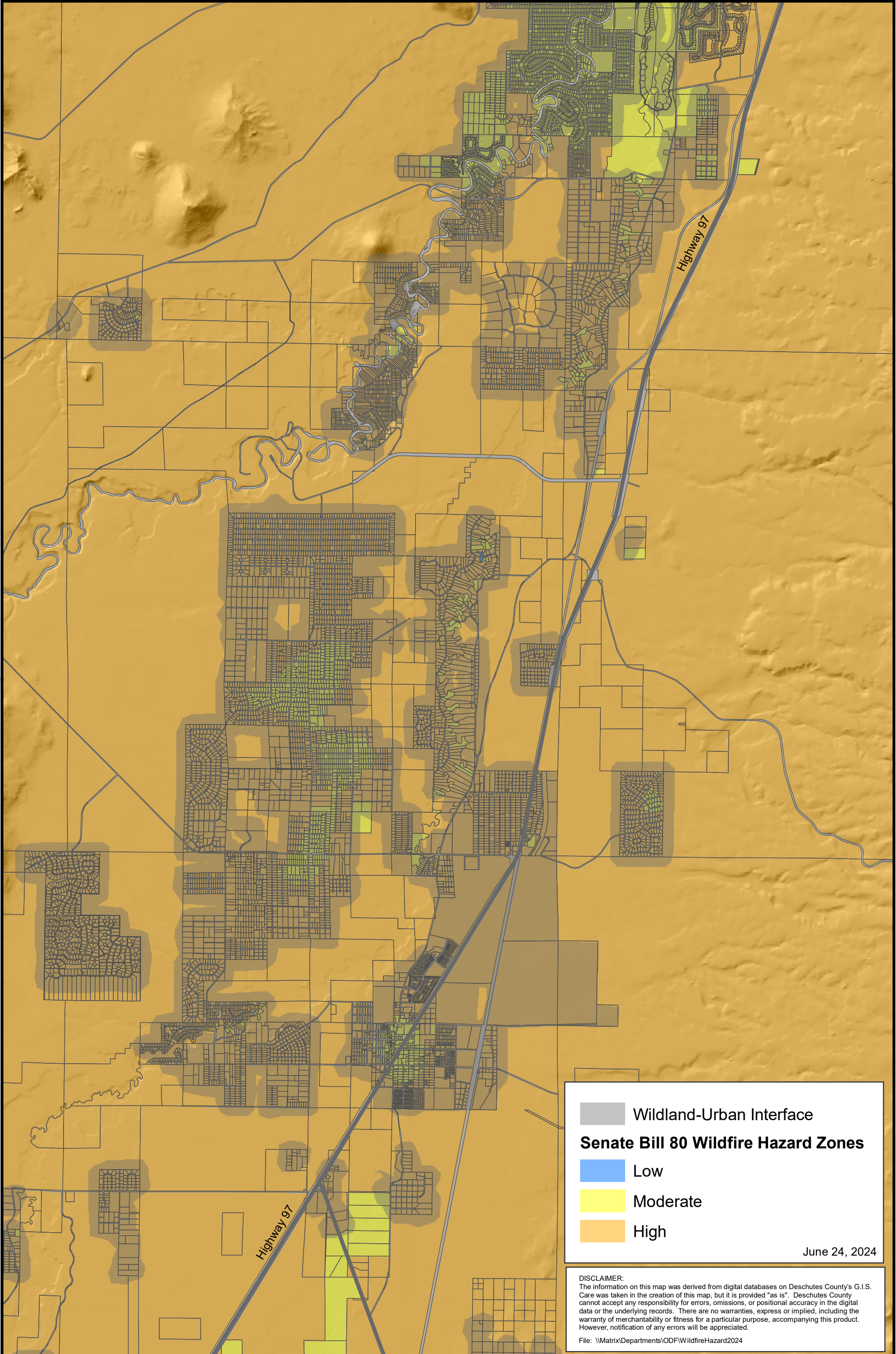
DISCLAIMER:
 The information on this map was derived from digital databases on Deschutes County's G.I.S. Care was taken in the creation of this map, but it is provided "as is". Deschutes County cannot accept any responsibility for errors, omissions, or positional accuracy in the digital data or the underlying records. There are no warranties, express or implied, including the warranty of merchantability or fitness for a particular purpose, accompanying this product. However, notification of any errors will be appreciated.

File: \\Matrix\Departments\ODFWildfireHazard2024



1" = 1 Mi.

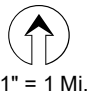
La Pine Area - Draft Senate Bill 80 Wildfire Hazard



June 24, 2024

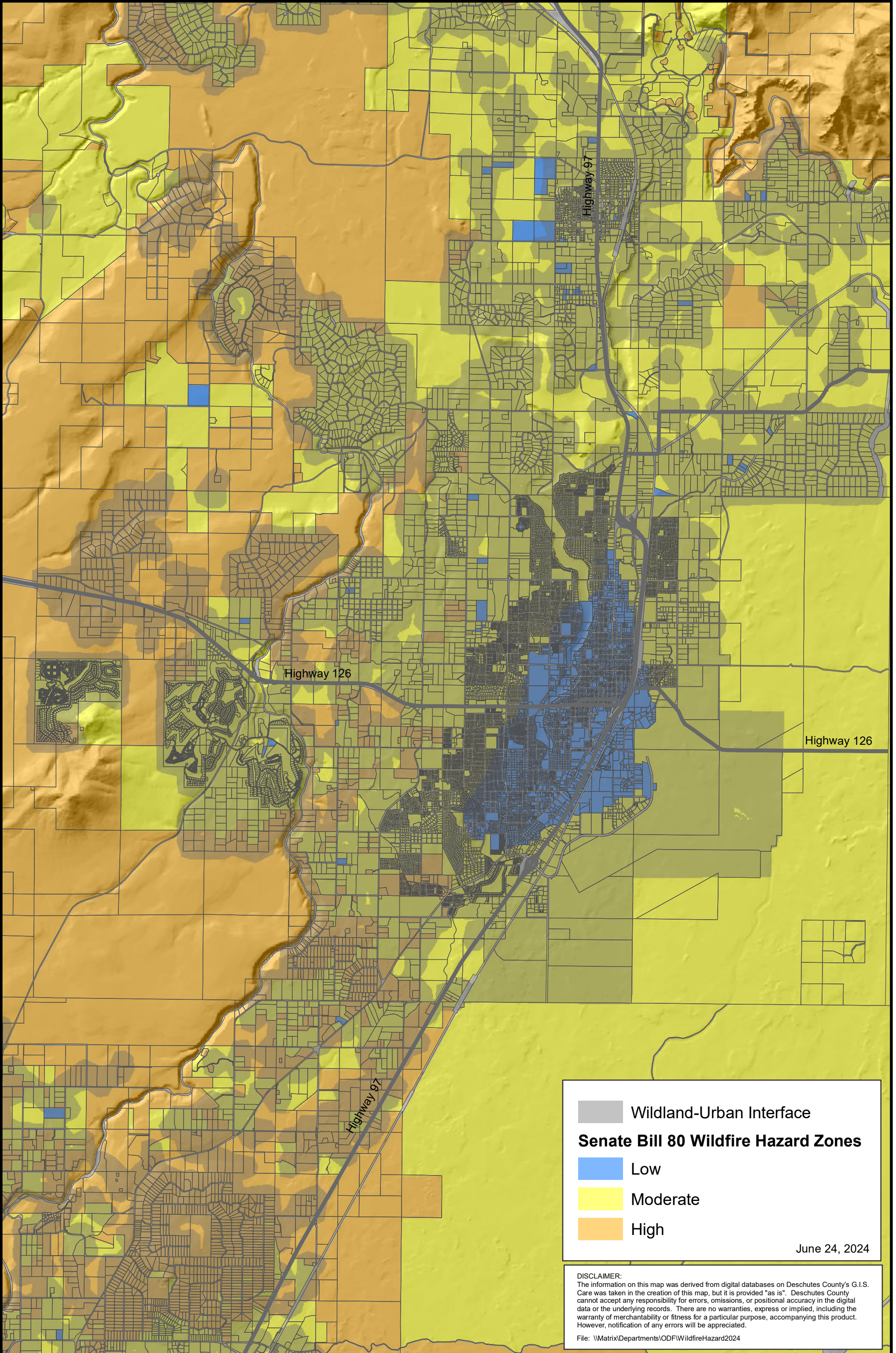
DISCLAIMER:
 The information on this map was derived from digital databases on Deschutes County's G.I.S. Care was taken in the creation of this map, but it is provided "as is". Deschutes County cannot accept any responsibility for errors, omissions, or positional accuracy in the digital data or the underlying records. There are no warranties, express or implied, including the warranty of merchantability or fitness for a particular purpose, accompanying this product. However, notification of any errors will be appreciated.

File: \\Matrix\Departments\ODFWildfireHazard2024



1" = 1 Mi.

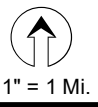
Redmond Area - Draft Senate Bill 80 Wildfire Hazard



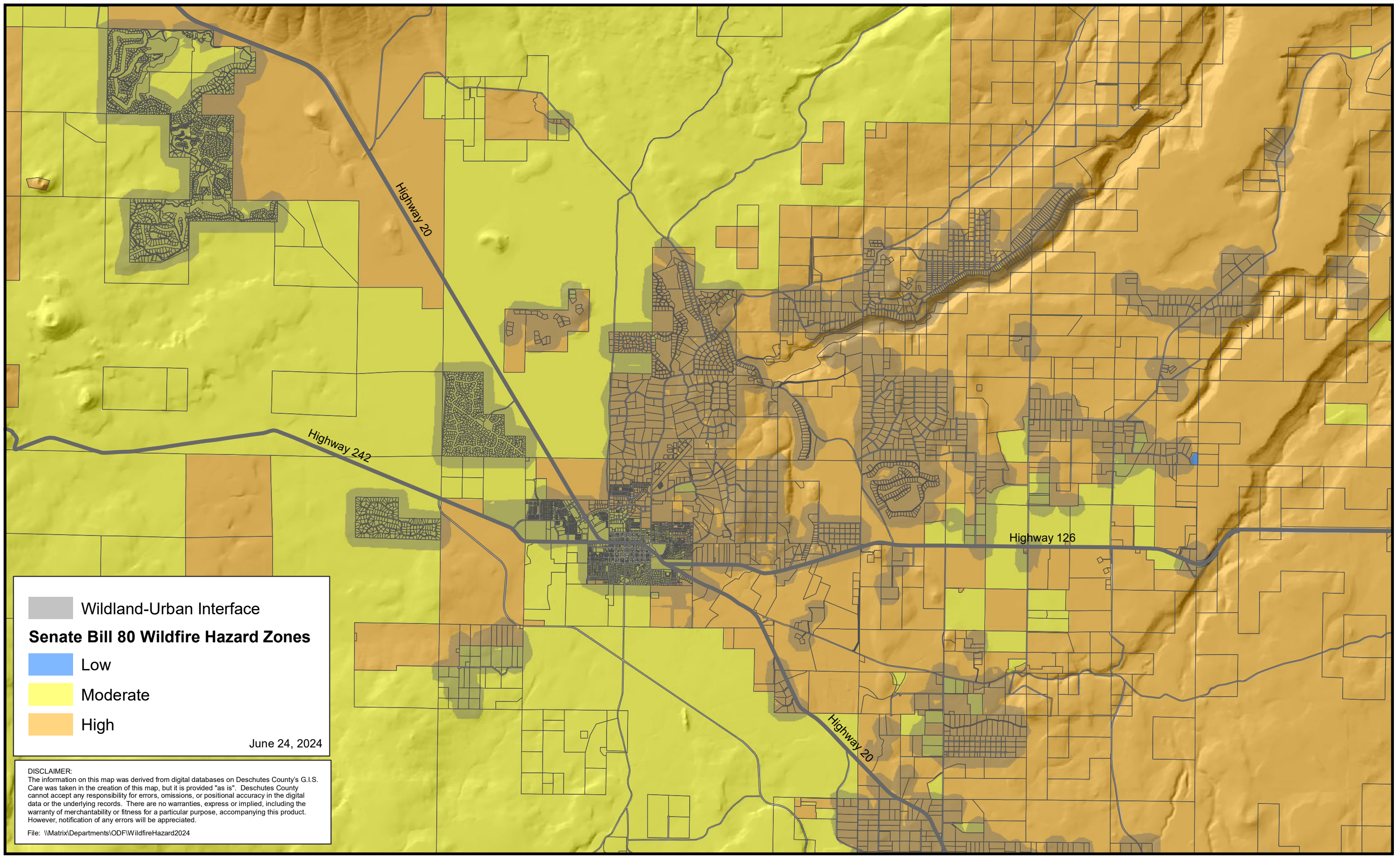
June 24, 2024


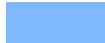


DISCLAIMER:
 The information on this map was derived from digital databases on Deschutes County's G.I.S. Care was taken in the creation of this map, but it is provided "as is". Deschutes County cannot accept any responsibility for errors, omissions, or positional accuracy in the digital data or the underlying records. There are no warranties, express or implied, including the warranty of merchantability or fitness for a particular purpose, accompanying this product. However, notification of any errors will be appreciated.

File: \\Matrix\Departments\ODFWildfireHazard2024



Sisters Area - Draft Senate Bill 80 Wildfire Hazard

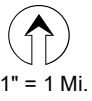


 Wildland-Urban Interface
Senate Bill 80 Wildfire Hazard Zones
 Low
 Moderate
 High

June 24, 2024

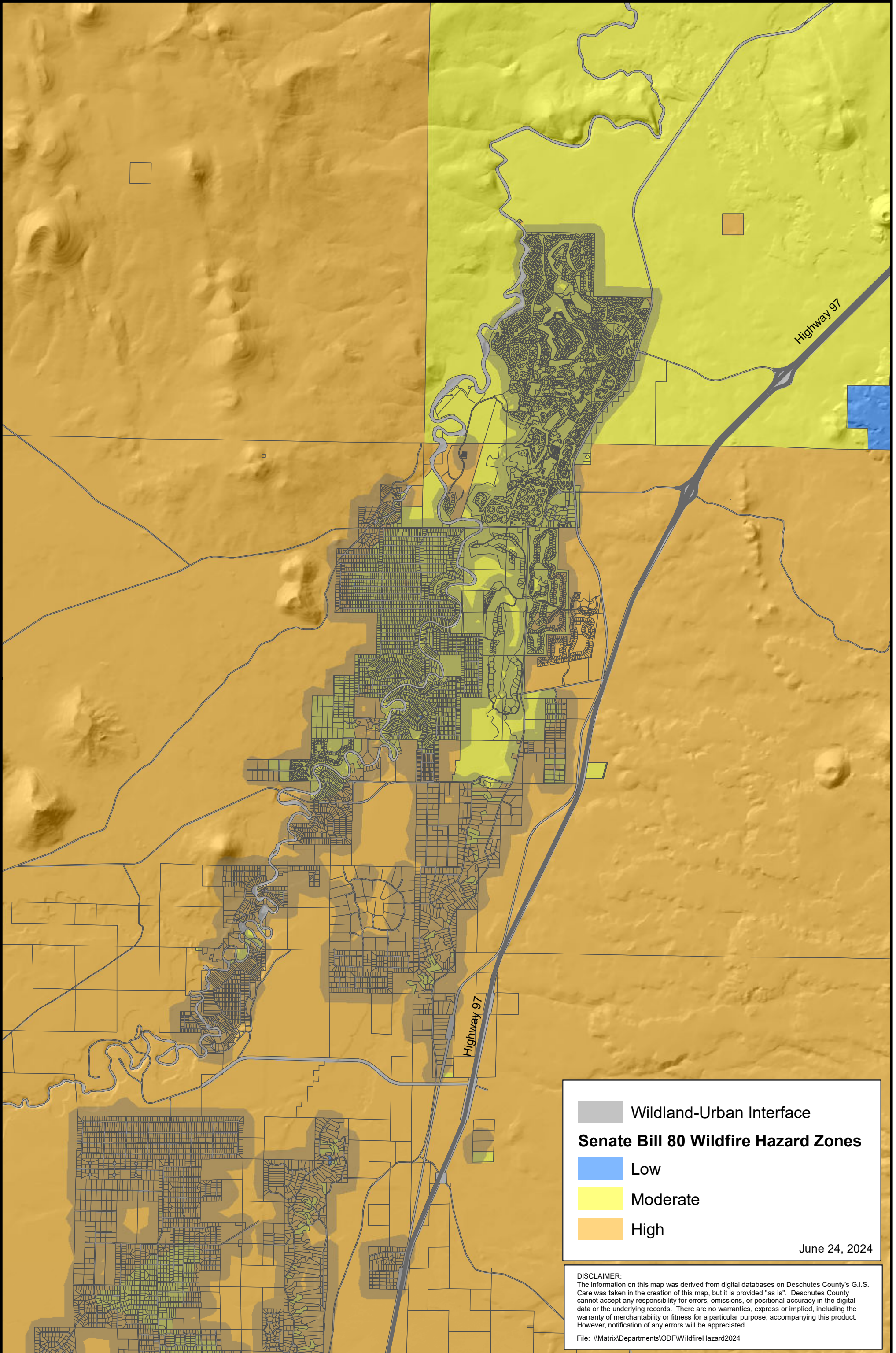
DISCLAIMER:
 The information on this map was derived from digital databases on Deschutes County's G.I.S. Care was taken in the creation of this map, but it is provided "as is". Deschutes County cannot accept any responsibility for errors, omissions, or positional accuracy in the digital data or the underlying records. There are no warranties, express or implied, including the warranty of merchantability or fitness for a particular purpose, accompanying this product. However, notification of any errors will be appreciated.

File: \\Matrix\Departments\ODFWildfireHazard2024



1" = 1 Mi.

Sunriver Area - Draft Senate Bill 80 Wildfire Hazard



June 24, 2024

DISCLAIMER:
 The information on this map was derived from digital databases on Deschutes County's G.I.S. Care was taken in the creation of this map, but it is provided "as is". Deschutes County cannot accept any responsibility for errors, omissions, or positional accuracy in the digital data or the underlying records. There are no warranties, express or implied, including the warranty of merchantability or fitness for a particular purpose, accompanying this product. However, notification of any errors will be appreciated.

File: \\Matrix\Departments\ODFWildfireHazard2024