

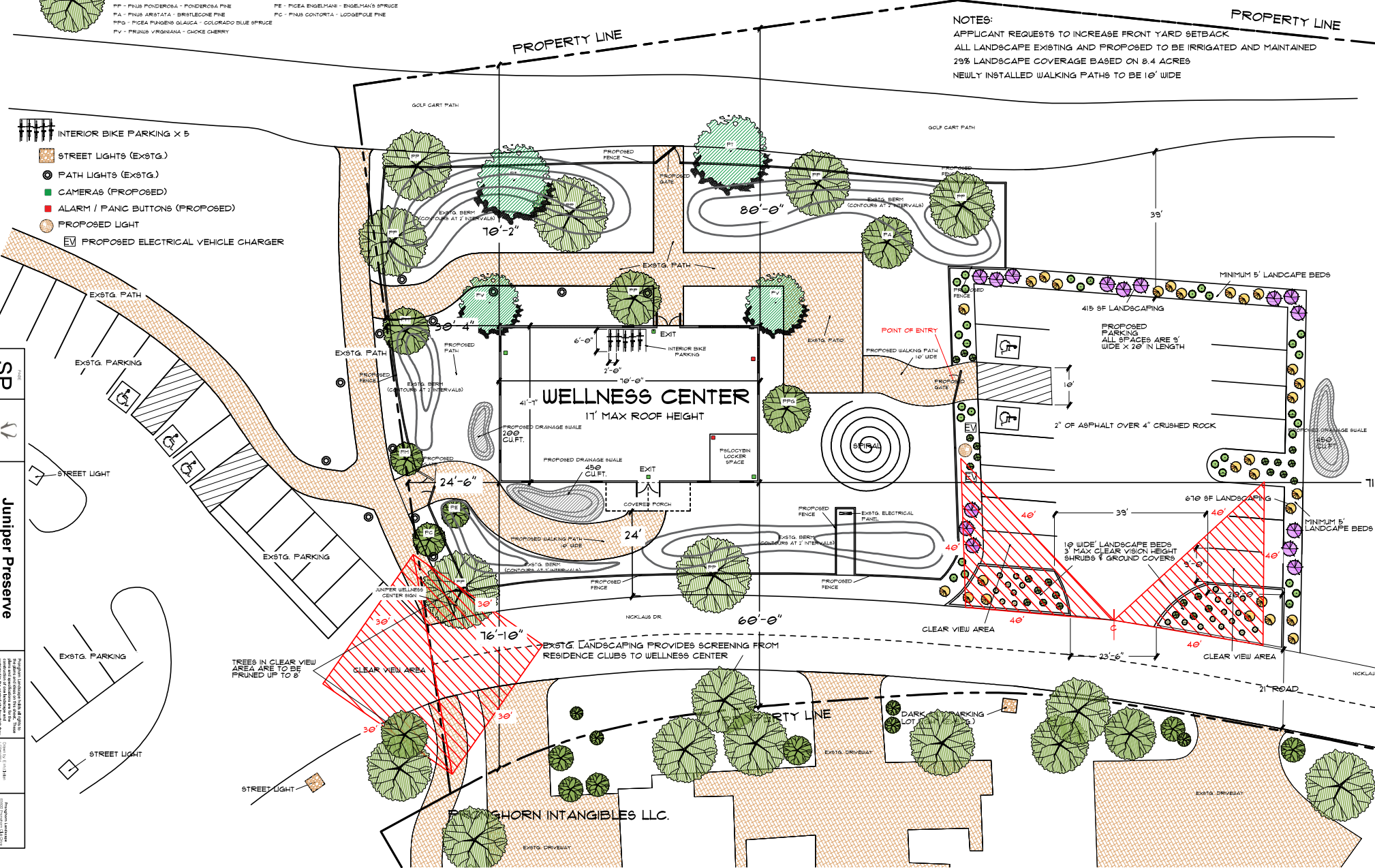
PLANT IDENTIFICATION KEY

- PT - POPYLUS TREMULOIDES - QUAKING ASPEN
- PP - PINUS PONDEROSA - PONDEROSA PINE
- PA - PINUS ARISTATA - BRISTLECONE PINE
- MPG - PICEA MUNGINS GLAUCA - COLORADO BLUE SPRUCE
- PV - PRUNUS VIRGINIANA - CHOCHE CHERRY
- PH - PINUS HAZO - HAZO PINE
- FE - PICEA ENGELMANNI - ENGELMANN'S SPRUCE
- PC - PINUS CONTORTA - LODGEPOLE PINE

PRONGHORN GOLF LLC.

NOTES:
 APPLICANT REQUESTS TO INCREASE FRONT YARD SETBACK
 ALL LANDSCAPE EXISTING AND PROPOSED TO BE IRRIGATED AND MAINTAINED
 29% LANDSCAPE COVERAGE BASED ON 8.4 ACRES
 NEWLY INSTALLED WALKING PATHS TO BE 10' WIDE

- INTERIOR BIKE PARKING X 5
- STREET LIGHTS (EXSTG.)
- PATH LIGHTS (EXSTG.)
- CAMERAS (PROPOSED)
- ALARM / PANIC BUTTONS (PROPOSED)
- PROPOSED LIGHT
- PROPOSED ELECTRICAL VEHICLE CHARGER



SP
 PRONGHORN
 LANDSCAPE

Juniper Preserve
 Wellness Center

PRONGHORN INTANGIBLES LLC.