

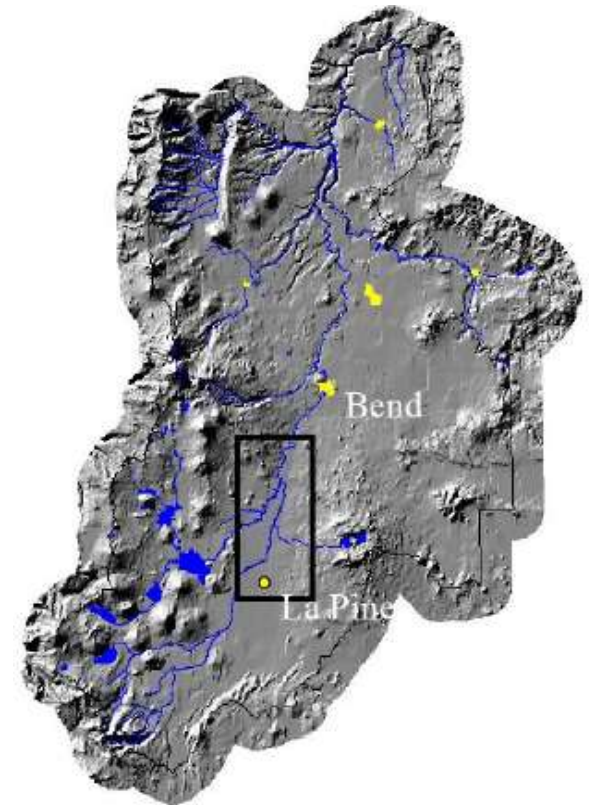
Southern Deschutes County Groundwater Protection Program Annual Report



February 3, 2025

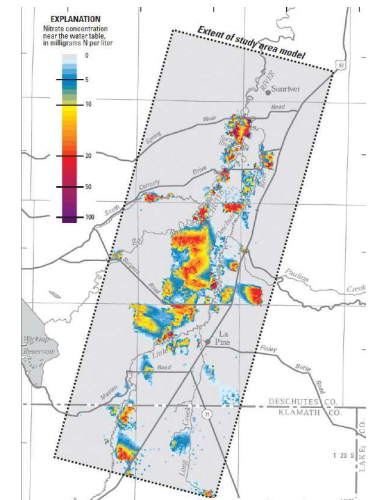
Introduction

- La Pine subbasin serves as the primary drinking water source for thousands of residents south of Sunriver
- Groundwater investigations by USGS and DEQ indicate this sole source aquifer is vulnerable to nitrate loading from onsite wastewater systems
- Annual report provides an update on the status, progress, and challenges related to protecting the groundwater in this subbasin
- CDD will update the report annually to identify changes in environmental conditions, development patterns, emerging opportunities, and/or the outcomes of ongoing initiatives



Background

- **Geology, hydrology, and human development intersect to create unique opportunities and challenges in the region**
- **Soils are highly porous and permeable with no impervious layer that protects the aquifer from pollution sources**
- **Over 11,000 lots of one-half to one-acre in size were platted in the 1960s and 1970s, prior to Oregon's land use planning laws**
- **Most homes rely on onsite wastewater systems and domestic wells**
- **USGS models demonstrate that Deschutes County must require higher treatment standards for existing and future septic systems to protect the region's groundwater**



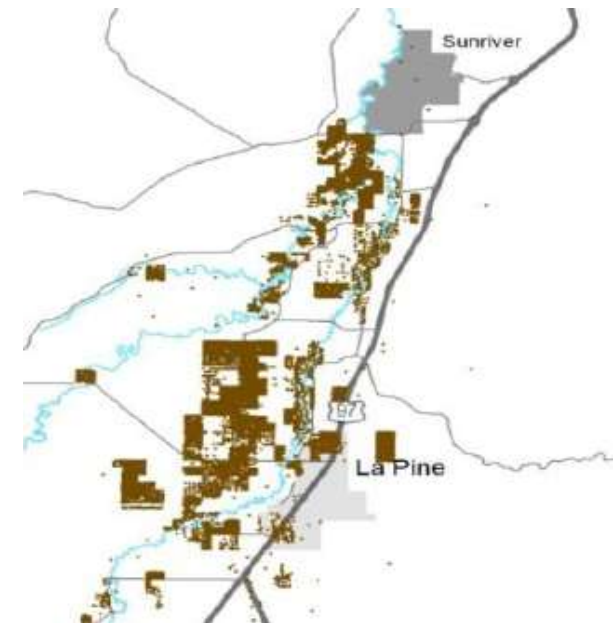
Financial Commitments

- Regional Problem Solving Grant (1996 - 1998)
- BLM Acquisition / Newberry Neighborhood (1998 - 2000)
- EPA National Demonstration Project (1999 - 2003)
- Transferable Development and Pollution Reduction Credits (2002 - 2019)
- La Pine Special Sewer District Loan (2003 - 2022)
- Groundwater Protection Federal Earmark (2005 - 2009)
- EPA Near-stream Environment Project (2005 - 2007)
- High Groundwater Project (2008 - 2009)
- Sunriver Sewer Feasibility Study (2008 - 2010)
- Non-Conforming Loan Program with NeighborImpact (2010 - **ongoing**)
- Alternative Treatment Technologies Rebates (2010 - **ongoing**)
- South County Local Wetland Inventory (2011)
- Goal 11 Exception (2015 - 2016)

Represents over \$9 million invested in groundwater protection

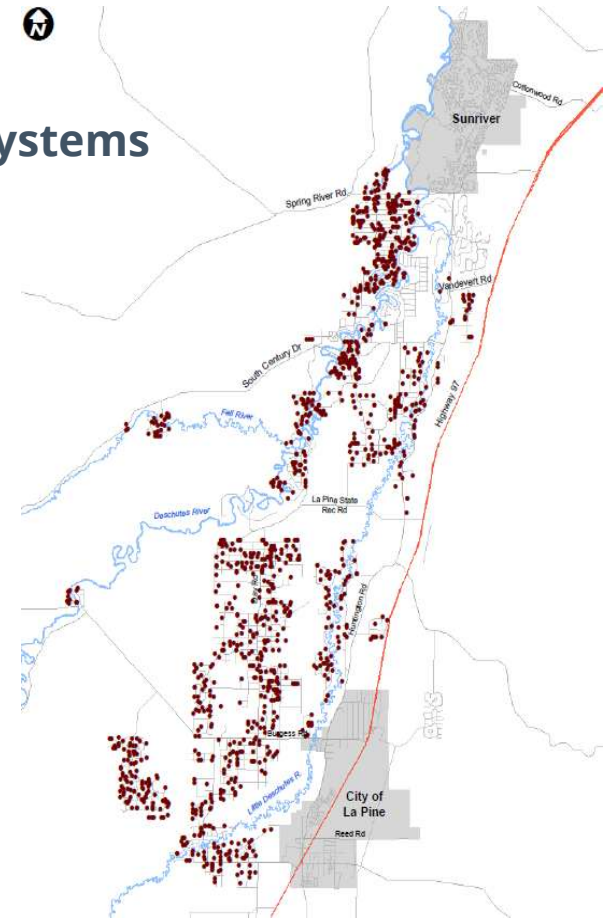
Onsite Wastewater Systems

- There are 10,338 lots in the region:
 - 6,914 are developed
 - 3,424 are vacant
- Of the 6,914 developed lots:
 - **5,698** rely on conventional onsite systems
 - 1,216 developed lots utilize Alternative Treatment Systems (ATTs)



Installed ATT Systems Map

- 1,216 developed lots utilize Alternative Treatment Systems (ATTs)



Emerging Opportunities

- **Grant opportunities that fund domestic well and septic system improvements**
 - **Newberry Neighborhood land sales**
 - **Convening a Financial Advisory Committee**
-

Questions?

