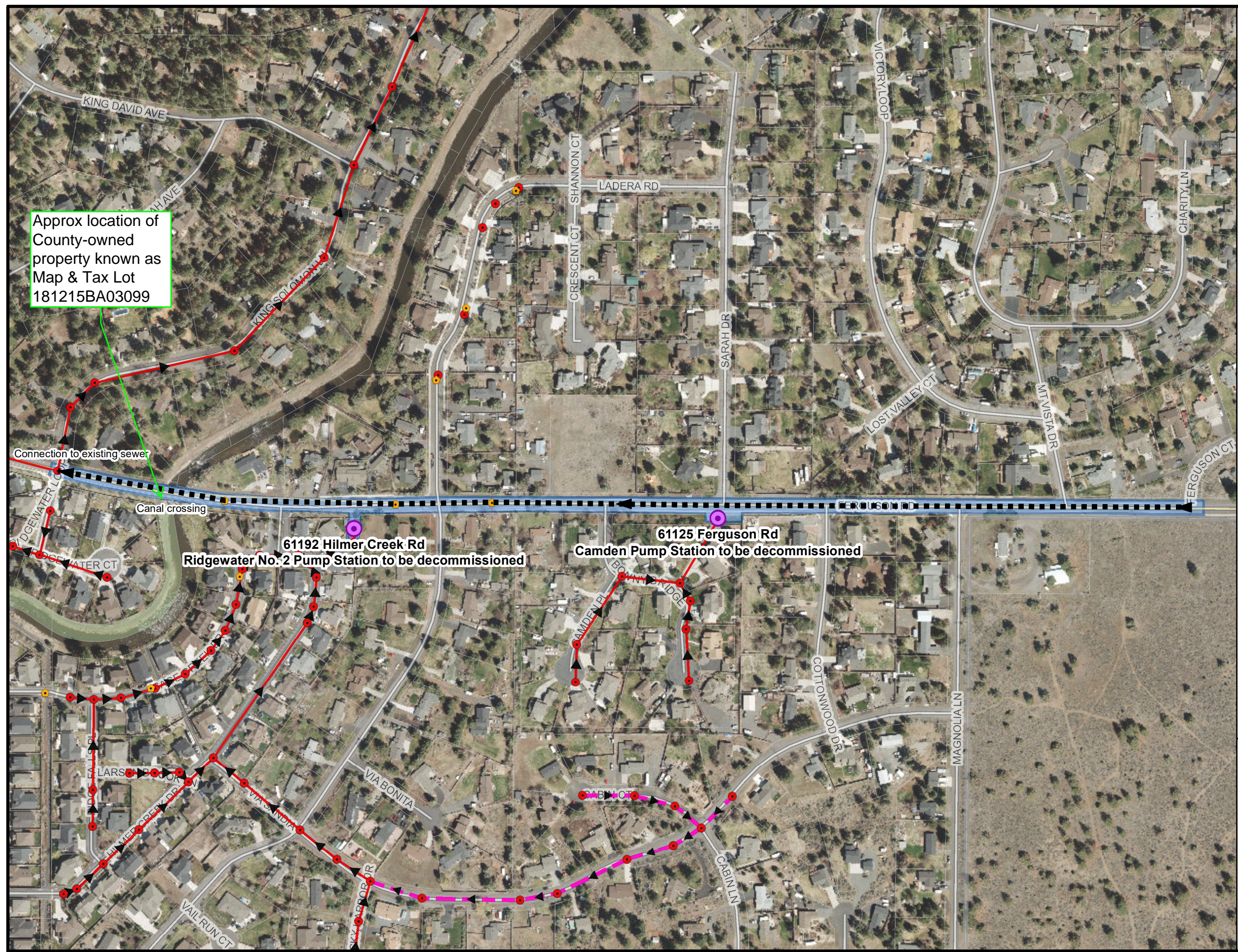
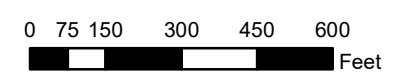


# PUMP STATION DECOMMISSIONING PHASE 4



Approx location of County-owned property known as Map & Tax Lot 181215BA03099

- Work Zone
- Pump Station Decomissions
- Proposed Sewer
- Active Gravity Main
- GravityManhole
- AccessPort
- CleanOutManhole
- PressureManhole



Map prepared by S. Layne, City of Bend  
 Print Date: Oct 04, 2021  
 Sources: City of Bend, Deschutes County



CITY OF BEND

This map is for reference purposes only. Care was taken in the creation of this map, but it is provided "AS IS." Please contact the City of Bend to verify map information or to report any errors.