

Deschutes County Facilities

Deschutes County

Downtown Campus Parking Review



November 30, 2022



Purpose of Parking Study



Assess current parking demands

How well is the campus parking serving staff and visitors?

Consider future campus needs

Assess needs associated with expanded courthouse

Identify area specific constraints and opportunities



Information Gathering



Step 1: Literature Review & Staff Surveys

Review prior campus studies and conduct outreach to County staff to understand current trends and needs



Step 2: Parking Inventories

Understand how the current County parking system is configured and what parking supply is available

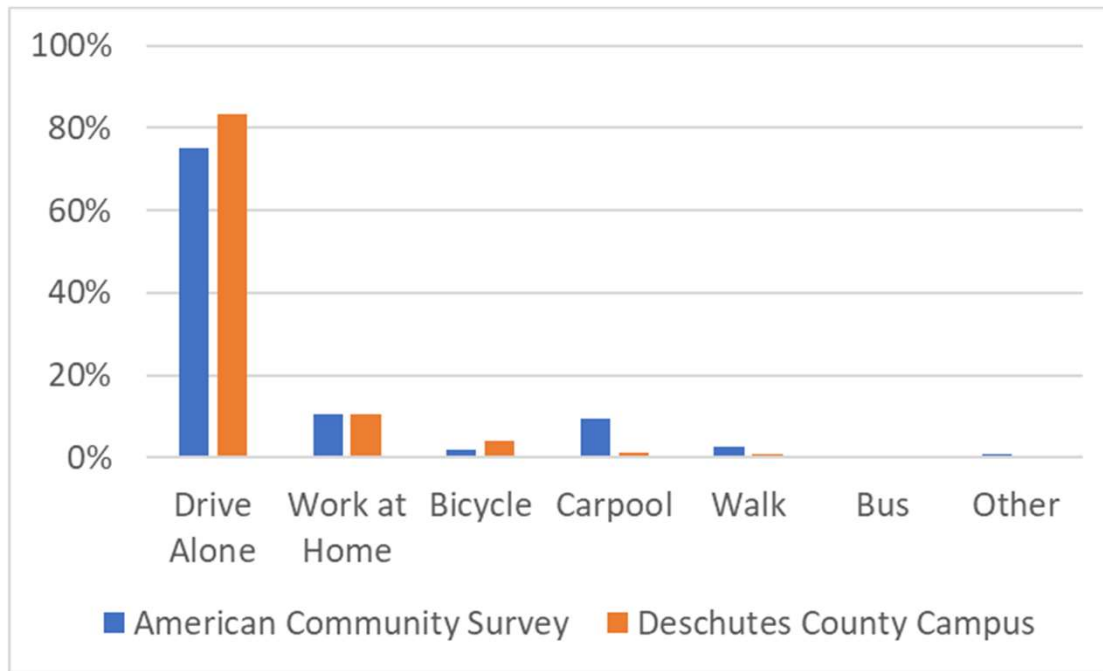


Step 3: Drone Surveys

Obtain drone surveys of the campus throughout a typical midweek day to assess current parking demands



Staff Parking Surveys



Assess current parking demands
345 Total Staff Responses

Assess current parking demands
How well is the campus parking serving staff and visitors?

Consider future campus needs
Identify area specific constraints and opportunities

Assess needs associated with expanded courthouse

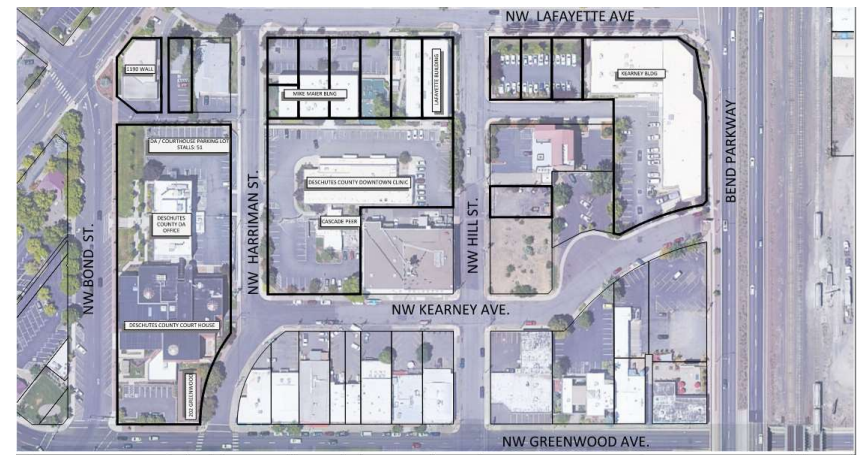


Deschutes County Boundary

NORTH OF LAFAYETTE



SOUTH OF LAFAYETTE



Parking Summary

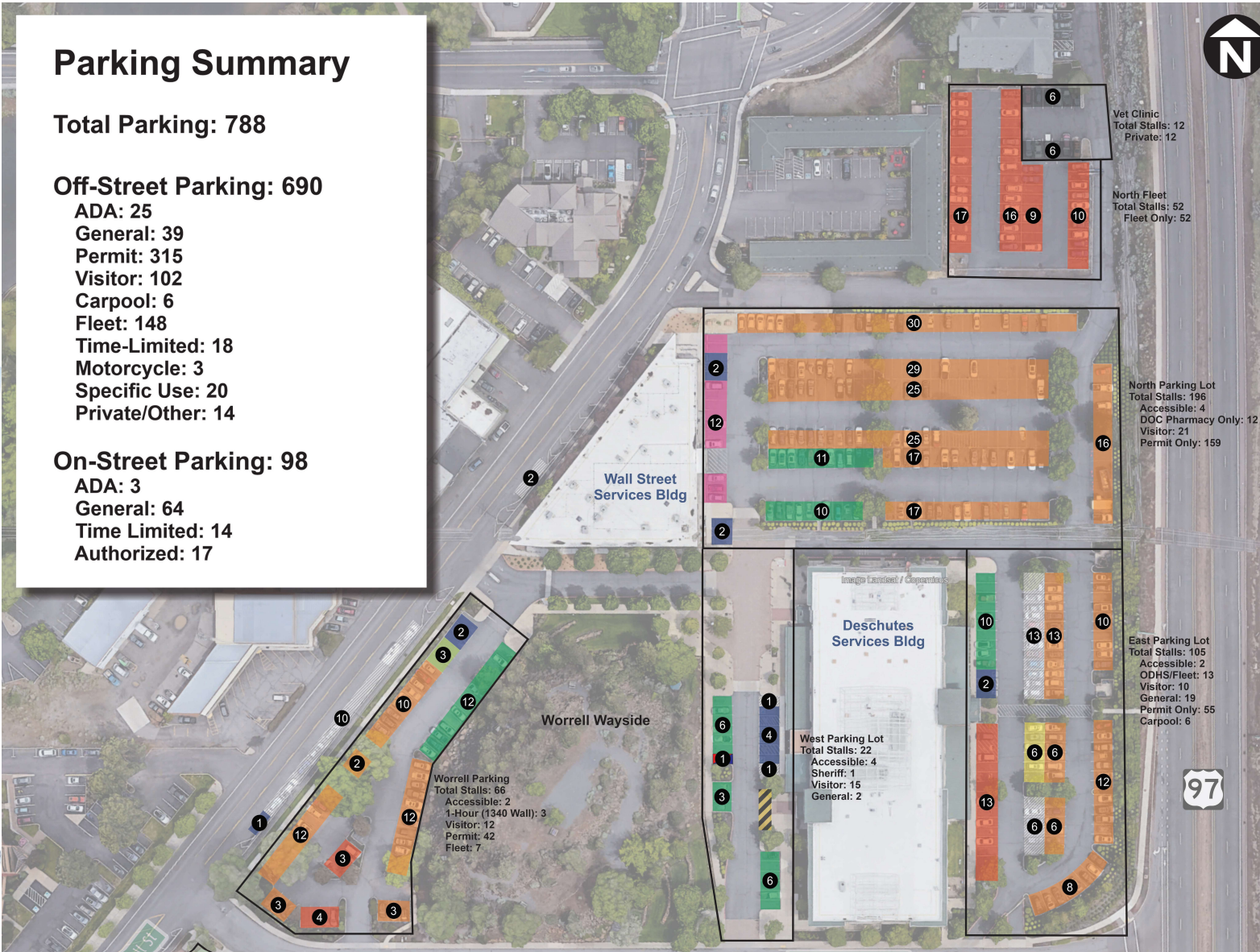
Total Parking: 788

Off-Street Parking: 690

ADA: 25
General: 39
Permit: 315
Visitor: 102
Carpool: 6
Fleet: 148
Time-Limited: 18
Motorcycle: 3
Specific Use: 20
Private/Other: 14

On-Street Parking: 98

ADA: 3
General: 64
Time Limited: 14
Authorized: 17



Vet Clinic
Total Stalls: 12
Private: 12

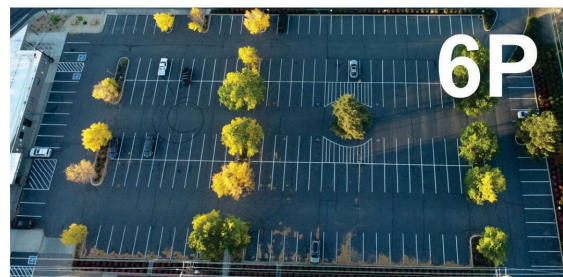
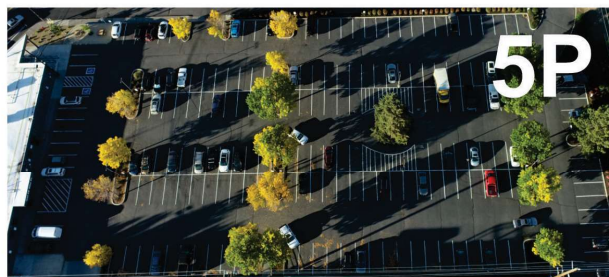
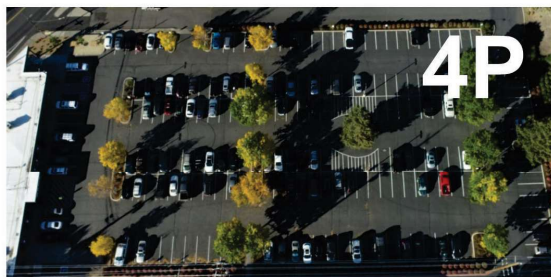
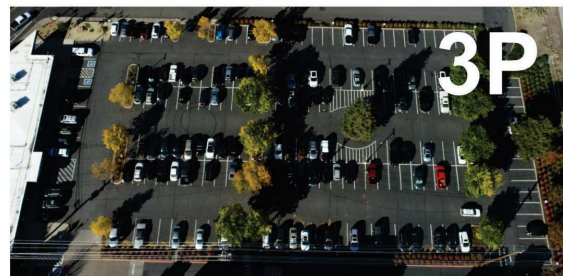
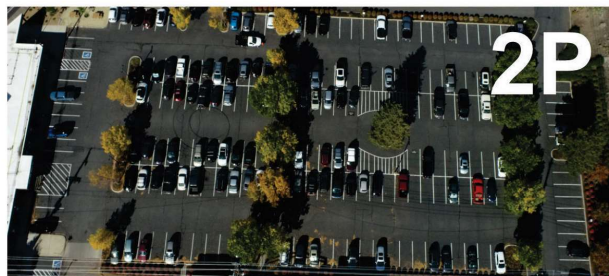
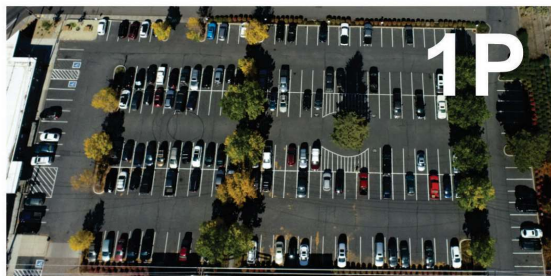
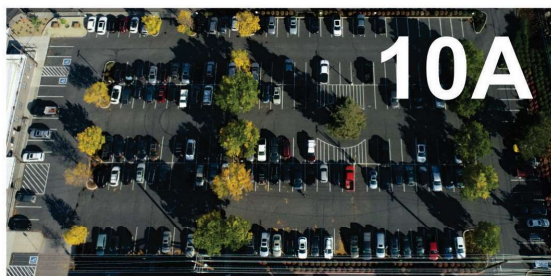
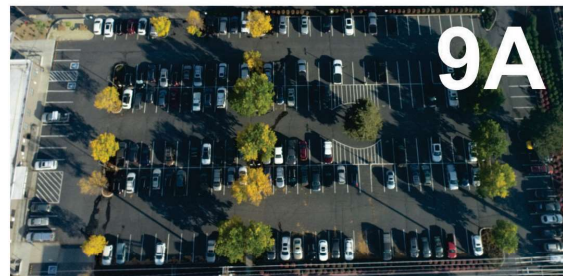
North Fleet
Total Stalls: 52
Fleet Only: 52

North Parking Lot
Total Stalls: 196
Accessible: 4
DOC Pharmacy Only: 12
Visitor: 21
Permit Only: 159

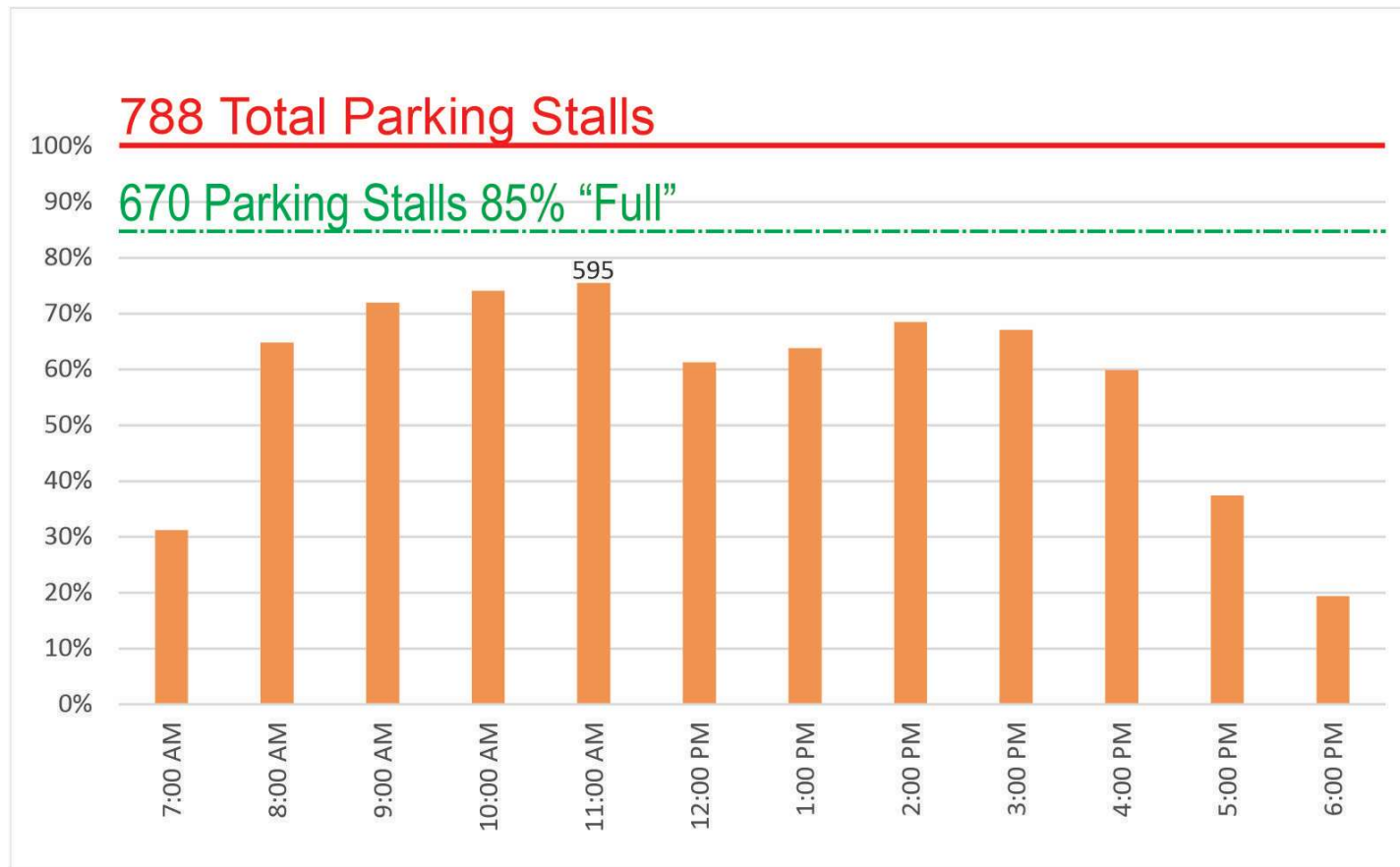
East Parking Lot
Total Stalls: 105
Accessible: 2
ODHS/Fleet: 13
Visitor: 10
General: 19
Permit Only: 55
Carpool: 6

West Parking Lot
Total Stalls: 22
Accessible: 4
Sheriff: 1
Visitor: 15
General: 2

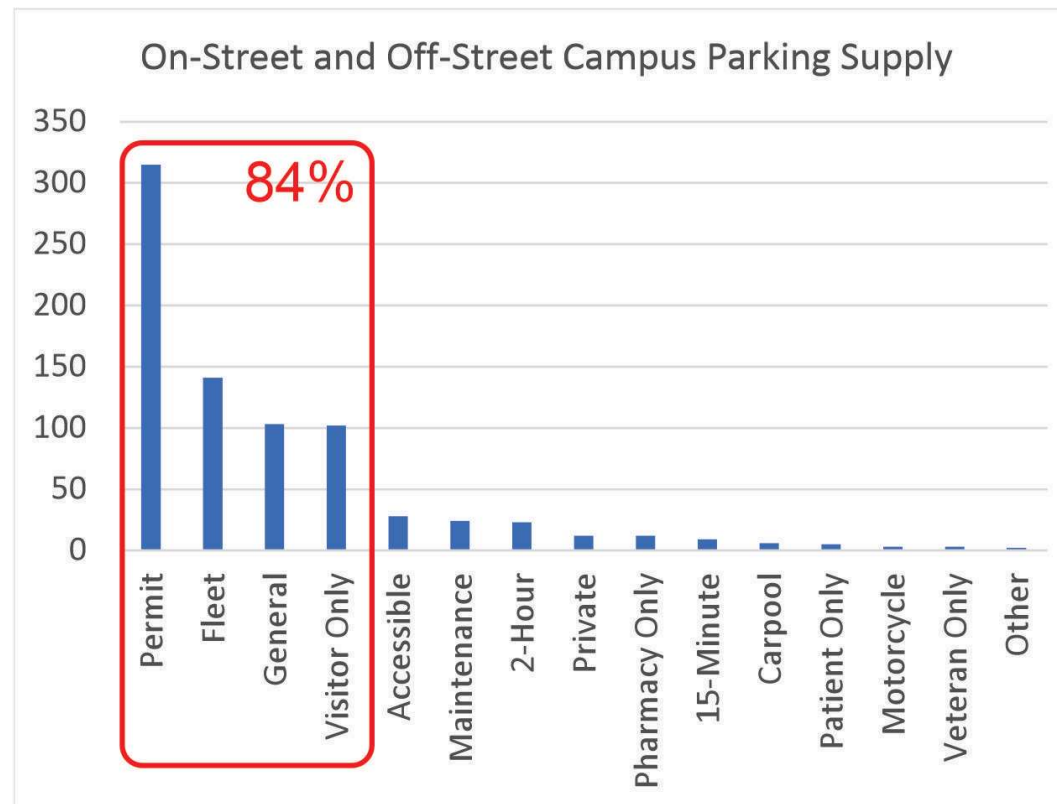
Worrell Parking
Total Stalls: 66
Accessible: 2
1-Hour (1340 Wall): 3
Visitor: 12
Permit: 42
Fleet: 7



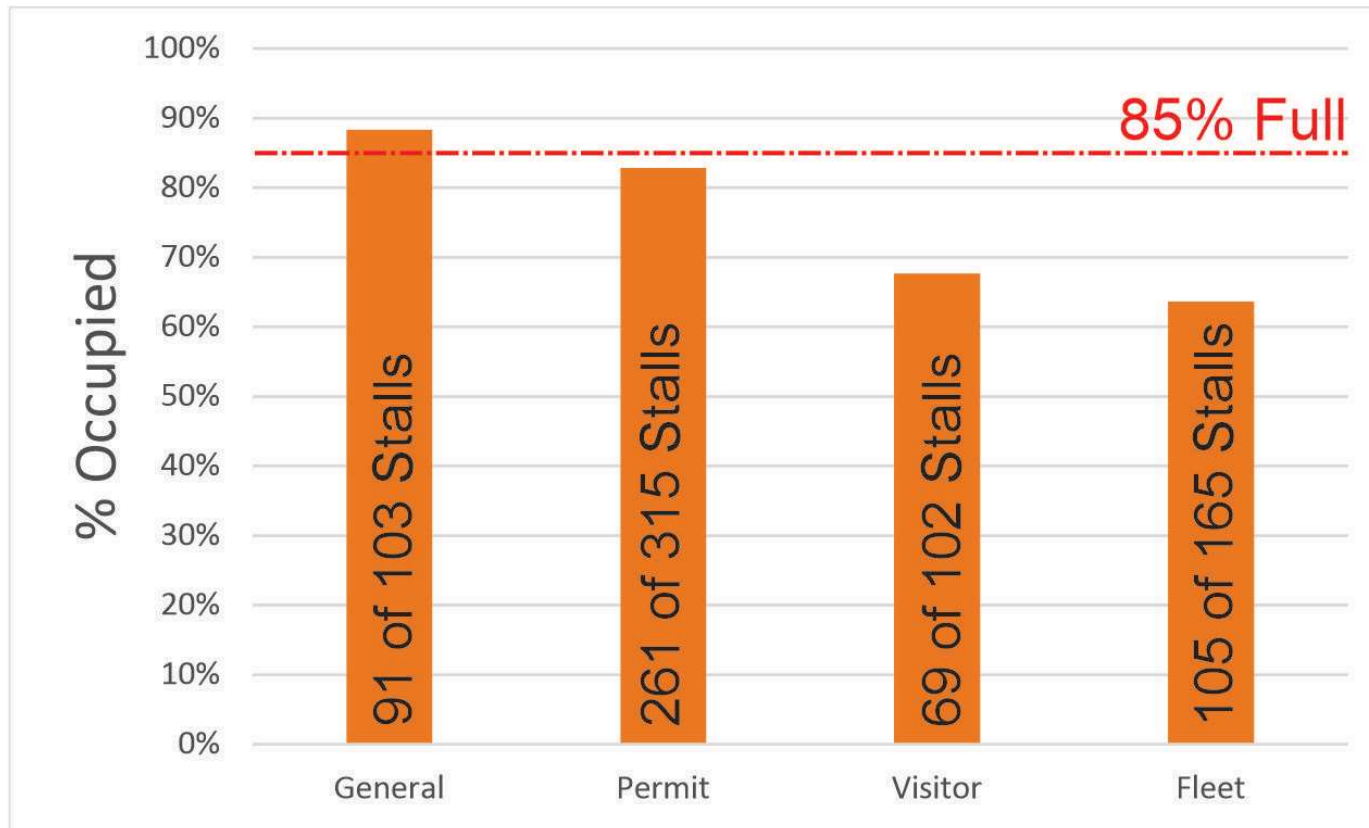
Campuswide Parking Demand



Campus Parking Supply



Campus Parking Demand (Peak Hour)



Preliminary Findings

- **Current campus parking supply with better internal efficiency measures can support planned courthouse expansion**
 - **No significant modifications to Worrell Park needed at this time**
 - **Parking allocations should be adjusted to reflect campus access priorities (Visitor, Staff, Fleet)**
- **Opportunities within the campus to improve campus access efficiency**



Recommended Next Steps

- **Conduct campus signage review to ensure messaging is clear and intuitive**
- **Ensure accessible routes and wayfinding are provided for staff and visitors**
- **Parking management/enforcement to ensure parking is prioritized for campus users**
- **Assess future growth needs and parking allocation priorities between visitor, staff, and fleet**
- **Explore Transportation Demand Management options and strategies (multimodal, remote, etc.)**



Questions?

