

# Mt. View Community Village

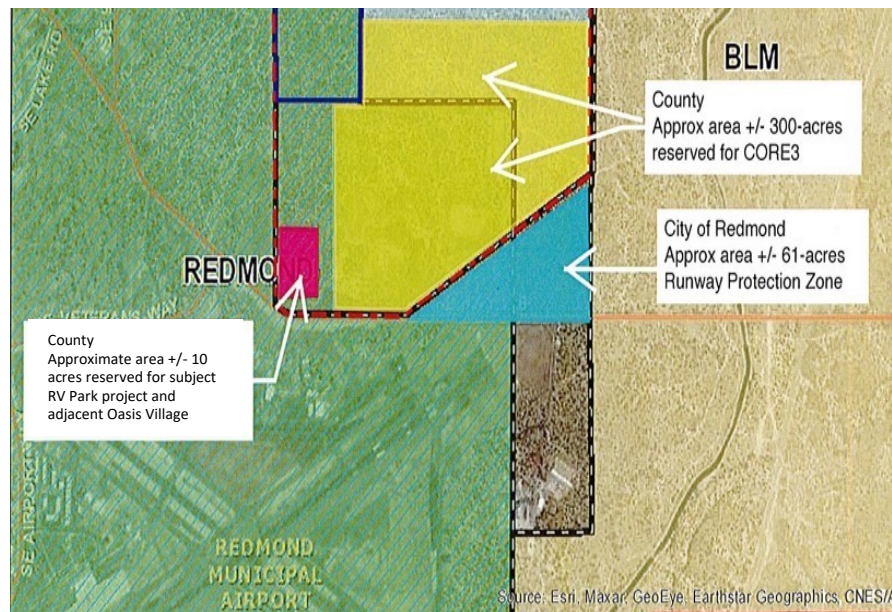
Master Planned Permanent Supportive Housing Village in Deschutes County



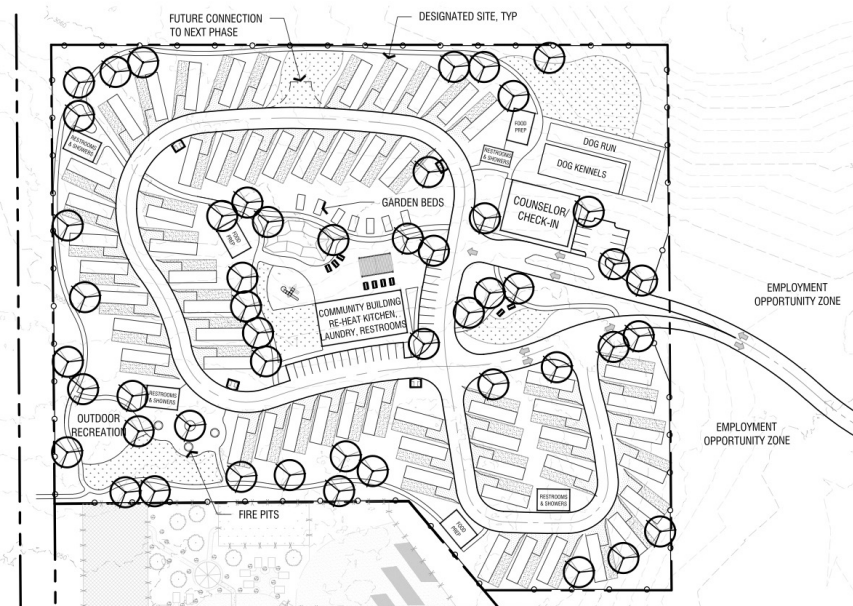
MOUNTAIN VIEW  
COMMUNITY  
DEVELOPMENT

## PROJECT SUMMARY

Mt. View Community Development, with support from Deschutes County and the City of Redmond, propose a 60-unit permanent supportive housing village in Redmond, Oregon. The development offers below-market rents for those making less than 30% AMI, with on-site staff providing case management services. The community features opportunity for public-private partnership, recreational facilities, workforce training opportunities, and community gathering spaces. Site development and landscape is currently in design with Ten Over Studio, with an anticipated construction start date of Fall 2025.



Subject property (pink) and neighboring sites



Conceptual site plan by Ten Over Studio



Photo of permanent housing at Community First! Village in Austin, Texas

- **Property:** 8.77 acres (adjacent to 3.23ac Oasis Village site)
- **Zoning:** M1 within the UGB
- **Land Owner:** Deschutes County - adjacent 45 acres also available with County approval upon proof of concept.
- 60 site permanent supportive housing development with below market rents serving up to 30% AMI
- On-site case management
- Target demographic includes recently unhoused, working poor, those on fixed incomes, and those in need of a step from nearby Oasis Village or Safe Parking

For additional information please contact Rick Russell at [rick@mvmfredmond.org](mailto:rick@mvmfredmond.org)